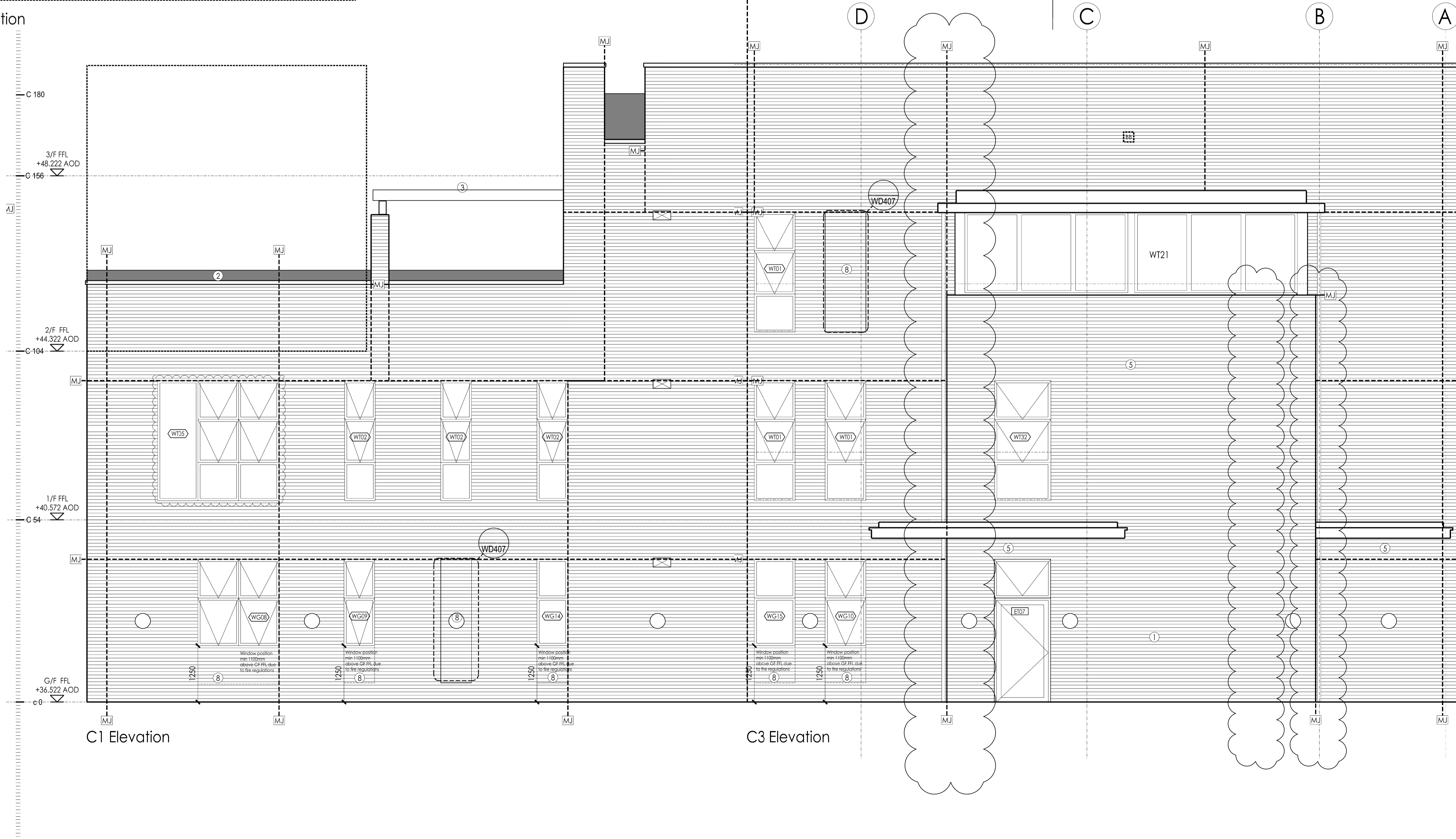


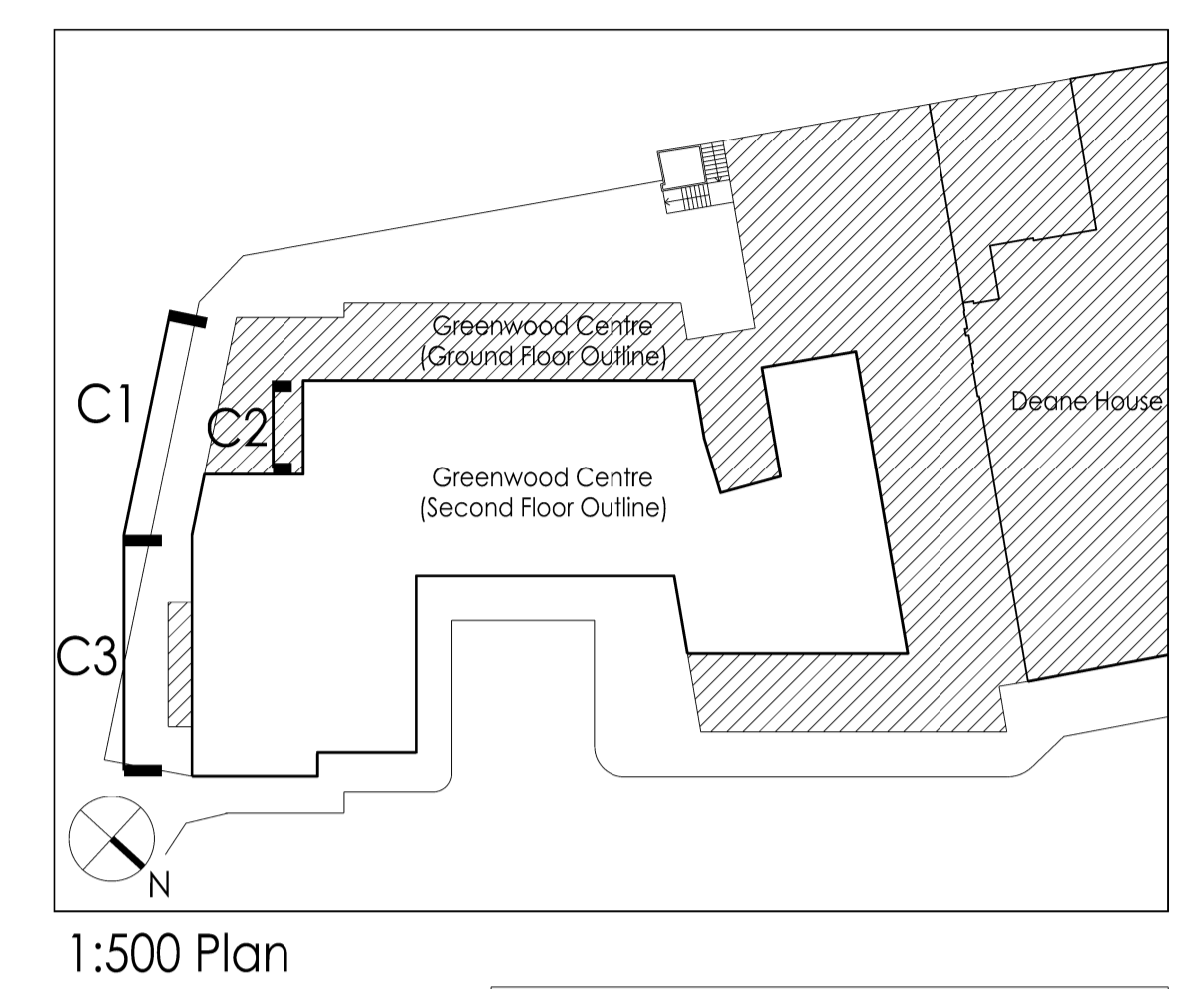
C2 Elevation



C1 Elevation

C3 Elevation

NOTES
 MOVEMENT JOINTS SHOWN FOR CO-ORDINATION PURPOSE ONLY. ALL MOVEMENT JOINTS TO S.E. DETAIL DESIGN & SPECIFICATION
 M+E EXTRACT POSITIONS TBC BY M+E ENGINEER



1:500 Plan

GENERAL NOTES
 DO NOT SCALE FROM THIS DRAWING.
 DIMENSIONS ARE GIVEN TO STRUCTURE UNLESS INDICATED OTHERWISE.
 DIMENSIONS TO BE CHECKED ON SITE PRIOR TO COMMENCEMENT OF WORK.
 DRAWINGS TO BE READ IN CONJUNCTION WITH ALL OTHER ARCHITECTURAL DRAWINGS, CONDITIONS AND SPECIALIST DRAWINGS, CONSTRUCTION NOTES, SPECIFICATIONS AND EMPLOYER'S REQUIREMENTS WHERE APPLICABLE.
 ANY DISCREPANCY MUST BE BROUGHT TO THE ATTENTION OF PKCO, IF IN DOUBT, ASK.
 ANY AMENDMENT TO THIS DRAWING MUST BE CARRIED OUT BY PKCO.
 THIS DRAWING REMAINS UNDER THE COPYRIGHT OF PKCO ARCHITECTS LIMITED. PLEASE OBTAIN PERMISSION BEFORE COPYING.
 THESE DETAILS OF CONSTRUCTION REPRESENT THE INTENTED CONSTRUCTION. THE ELEMENTS OF FRAME ANALYSIS, DESIGN, DETAIL AND SPECIFICATION.
 ALL STRUCTURAL ELEMENTS ARE SHOWN INDICATED FOR ALL ELEMENTS OF STRUCTURE REFER TO STRUCTURAL DRAWINGS AND SPECIFICATIONS FOR MORE DETAILED DESIGN AND SPECIFICATION.
 ALL MECHANICAL AND ELECTRICAL ELEMENTS ARE SHOWN INDICATED FOR ALL MECHANICAL AND ELECTRICAL ELEMENTS REFER TO MECHANICAL AND ELECTRICAL DRAWINGS FOR MORE DETAILED DESIGN AND SPECIFICATION.
 ALL MECHANICAL AND ELECTRICAL ELEMENTS ARE SHOWN INDICATED FOR ALL MECHANICAL AND ELECTRICAL ELEMENTS REFER TO MECHANICAL AND ELECTRICAL DRAWINGS FOR MORE DETAILED DESIGN AND SPECIFICATION.

KEY

MATERIALS

1. Brick
2. Terrace Glazing
3. Timber Pergola
4. Roof Light
5. Metal Trimmed Roof
6. Canopy
7. Metal Fins
8. Recessed Brickwork
9. To Landscape Architects details

ET 01 Door Ref.
 WT 01 Window Ref.
 MJ Movement joints
 Detail REF.
 Extract/intake/Ventilation
 SB Sparrow Box: 1SP Schwegler Sparrow Terrace
 BB Bat Box: Istock Enclosed Bat Box 'C' 215 x 290 mm Large Cream

For windows pattern type drawing refer to:
 1213_WD530

For curtain wall schedule refer to:
 1213_WD533

For Materials and finishes refer to:
 1213_WD 125, 126 + 127

DATE	REV	DESCRIPTION	BY	CHECKED
10.11.2017	H	External Lighting positions indicated.	PH	PH
02.08.2017	G	Movement joints amended based for Construction	RS	PH
24.05.2017	F	Pergola amended as indicated.	JF	PH
12.05.2017	E	Cladding to floor 3 updated to incorporate column to floor 3. Bat box required for BREEM update. Movement joints amended to floor 3 case.	JF	PH
24.03.2017	D	Movement joint positions amended as indicated.	JF	PH
10.03.2017	C	ET 01 door tag shown as outward opening. WT 11 window tag shown. WT 04 opening revised. Movement joints updated. Window & door heights adjusted. Notes updated. Pergola amended to suit plan.	JF	PH
13.01.2017	B	As an engineering design amendment: Levels shown both datum. Window header details amended, omitting brick on edge. Window header detail amended, omitting brick on edge. Quantity of materials updated. Window openings updated.	JF	RS
19.05.2016	A	Window types amended. Legend numbering added to drawing.	JF	PH
01.04.2016	/	First issue for comment	JF	PH

5 - 8 HARDWICK STREET
 LONDON EC1R 4RG
 TEL: 020 - 7372 - 8918
 www.pcco.co.uk

ARCHITECTS INTERIOR DESIGNERS
 MASTER PLANNERS URBAN DESIGNERS

CLIENT	Kier Group
PROJECT	Greenwood Centre
DRAWING TITLE	Elevation C1, C2 & C3
STATUS	CONSTRUCTION
SCALE	1:50@A1
DATE	2016.03
DRAWING NO.	1213_WD_215
DRAWN BY	JF
CHECKED BY	PH
REVISION	H