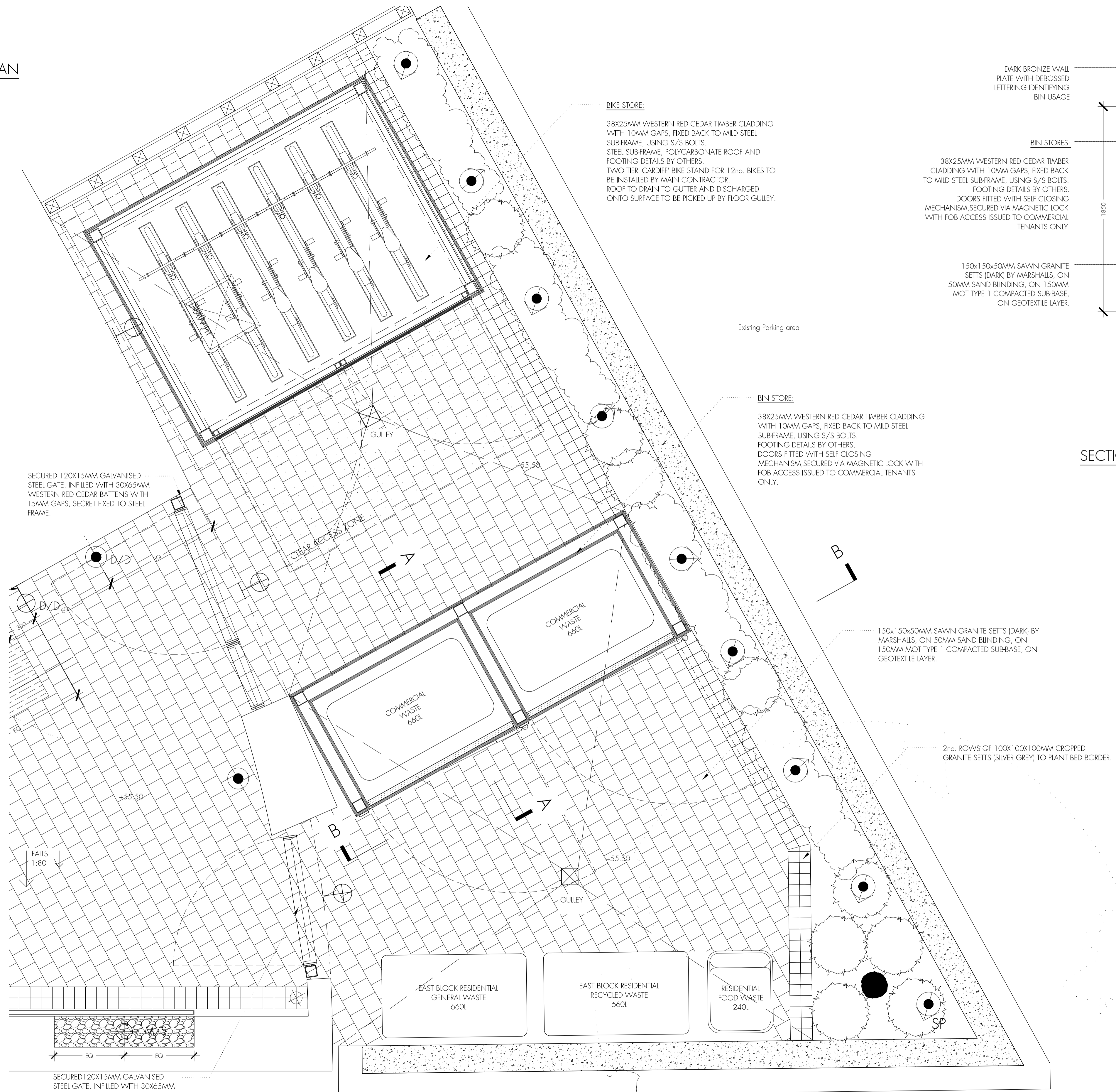


PLAN



**BIKE STORE:**  
38X25MM WESTERN RED CEDAR TIMBER CLADDING WITH 10MM GAPS, FIXED BACK TO MILD STEEL SUB-FRAME, USING S/S BOLTS. STEEL SUB-FRAME, POLYCARBONATE ROOF AND FOOTING DETAILS BY OTHERS. TWO TIER 'CARDIFF' BIKE STAND FOR 12no. BIKES TO BE INSTALLED BY MAIN CONTRACTOR. ROOF TO DRAIN TO GUTTER AND DISCHARGED ONTO SURFACE TO BE PICKED UP BY FLOOR GUILLEY.

SECURED 120X15MM GALVANISED STEEL GATE. INFILLED WITH 30X65MM WESTERN RED CEDAR BATTENS WITH 15MM GAPS, SECRET FIXED TO STEEL FRAME.

Existing Parking area

**BIN STORE:**  
38X25MM WESTERN RED CEDAR TIMBER CLADDING WITH 10MM GAPS, FIXED BACK TO MILD STEEL SUB-FRAME, USING S/S BOLTS. FOOTING DETAILS BY OTHERS. DOORS FITTED WITH SELF CLOSING MECHANISM, SECURED VIA MAGNETIC LOCK WITH FOB ACCESS ISSUED TO COMMERCIAL TENANTS ONLY.

150x150x50MM SAWN GRANITE SETTS (DARK) BY MARSHALLS, ON 50MM SAND BUNDING, ON 150MM MOT TYPE 1 COMPACTED SUB-BASE, ON GEOTEXTILE LAYER.

2no. ROWS OF 100X100X100MM CROPPED GRANITE SETTS (SILVER GREY) TO PLANT BED BORDER.

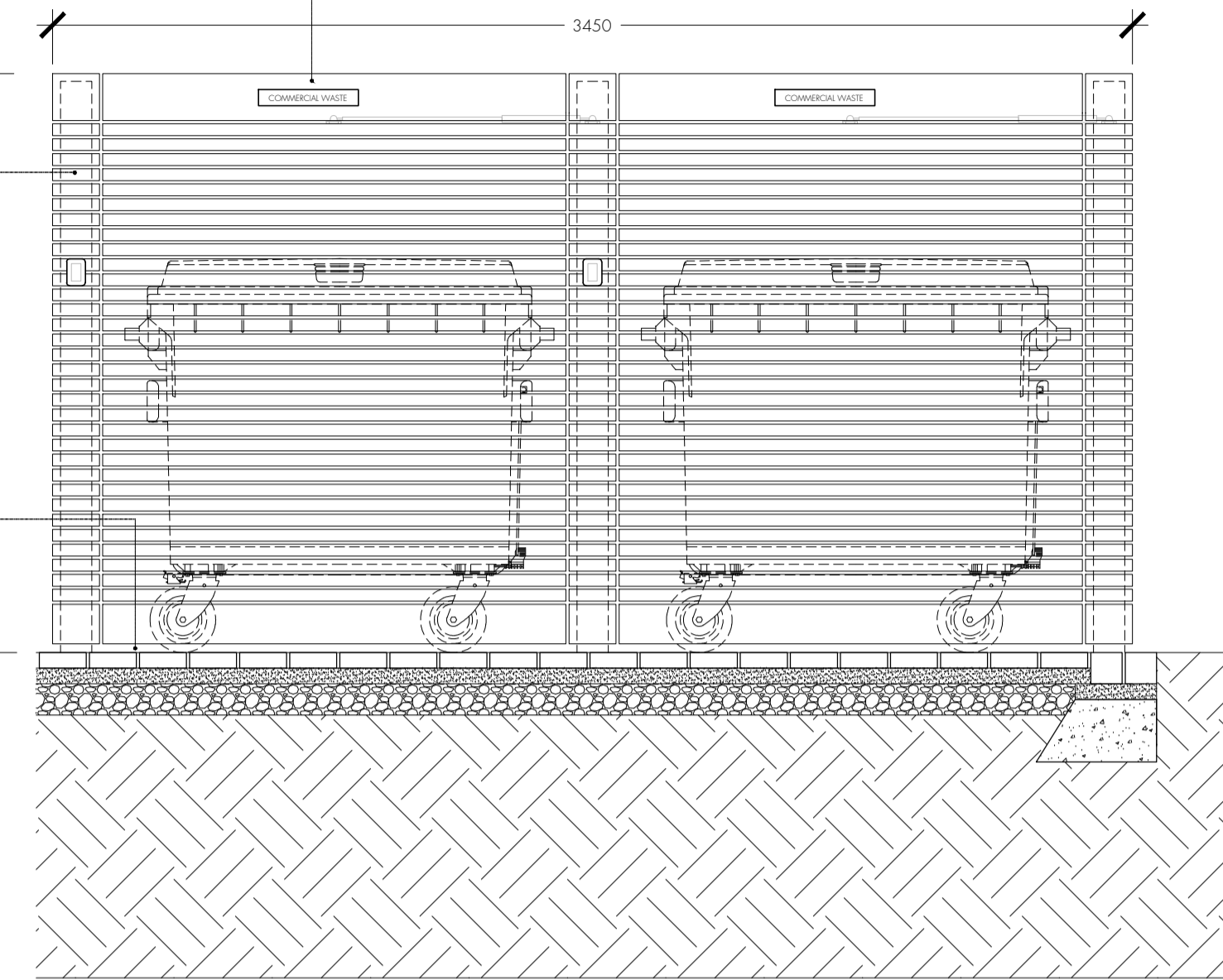
SECURED 120X15MM GALVANISED STEEL GATE. INFILLED WITH 30X65MM WESTERN RED CEDAR BATTENS WITH 15MM GAPS, SECRET FIXED TO STEEL FRAME.

DARK BRONZE WALL PLATE WITH DEBOSSED LETTERING IDENTIFYING BIN USAGE

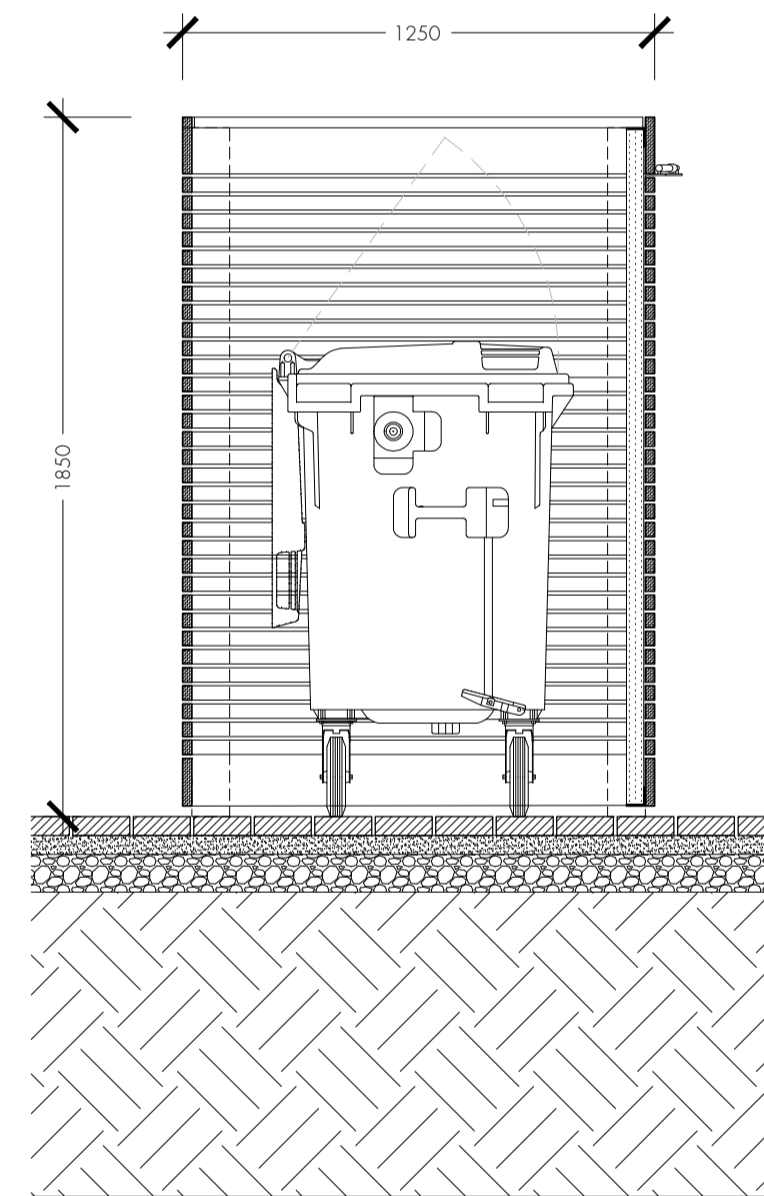
**BIN STORES:**

38X25MM WESTERN RED CEDAR TIMBER CLADDING WITH 10MM GAPS, FIXED BACK TO MILD STEEL SUB-FRAME, USING S/S BOLTS. FOOTING DETAILS BY OTHERS. DOORS FITTED WITH SELF CLOSING MECHANISM, SECURED VIA MAGNETIC LOCK WITH FOB ACCESS ISSUED TO COMMERCIAL TENANTS ONLY.

150x150x50MM SAWN GRANITE SETTS (DARK) BY MARSHALLS, ON 50MM SAND BUNDING, ON 150MM MOT TYPE 1 COMPACTED SUB-BASE, ON GEOTEXTILE LAYER.



SECTION BB



SECTION AA

tasou  
associates

architects + structural engineers

4 Amwell Street, London. EC1R 1UQ T:020 7713 7070 F:020 7713 7071 E:tasou@tasou.co.uk

project	Swains Lane, London, N6 6QX		
dwg title	East Building Bin Store		
job no.	1658	dwg no.	EW-114
date	October 2018	scale @ A1	1:20