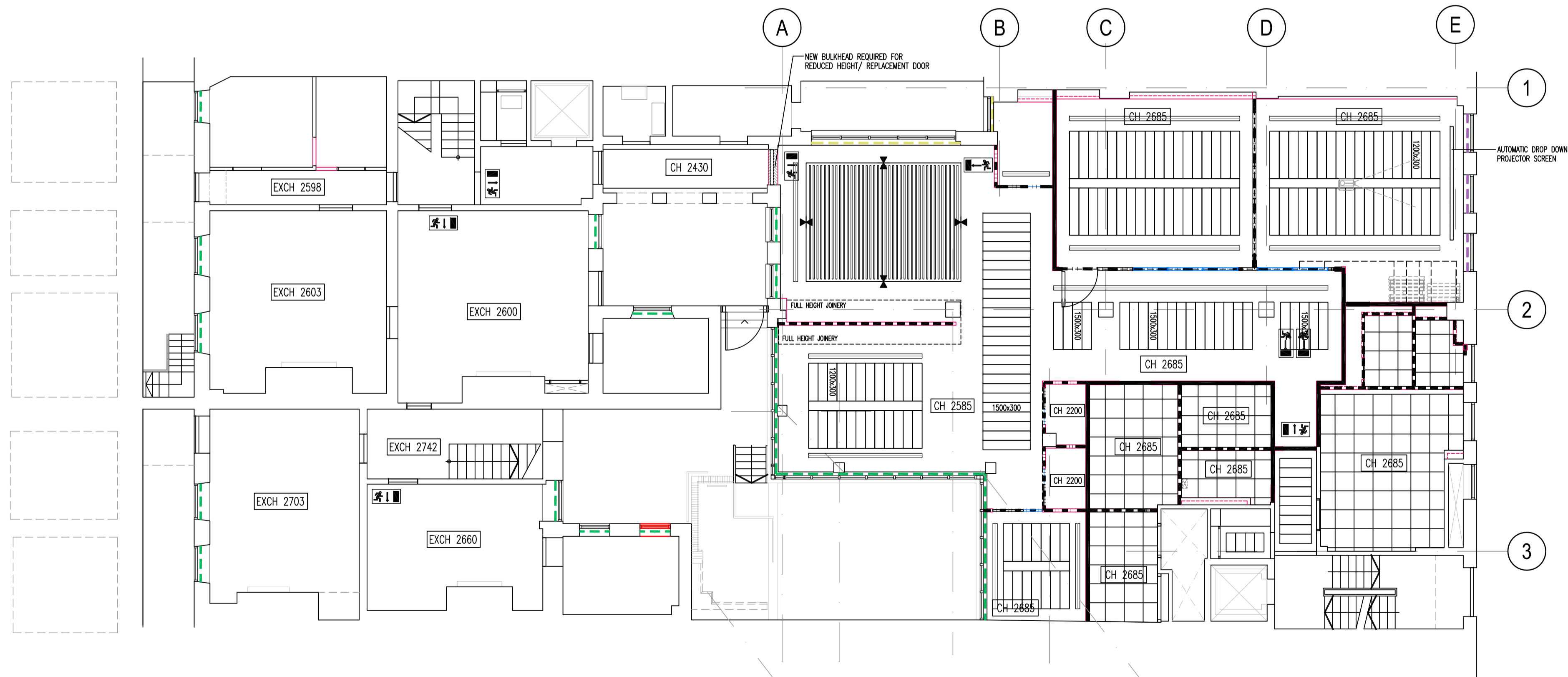
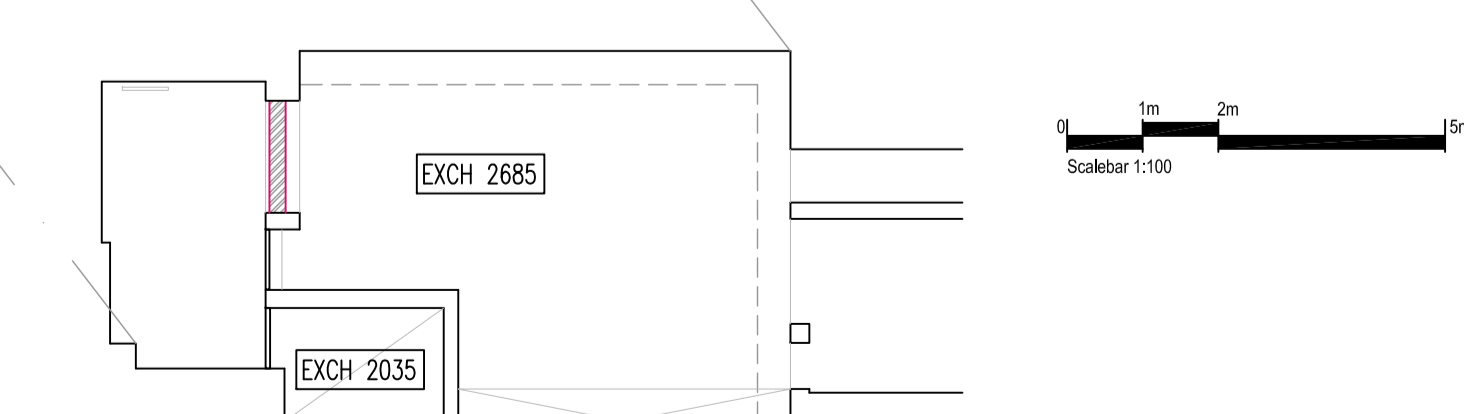


A Ground floor plan
Scale 1:100



B Lower ground floor plan
Scale 1:100



C Basement plant room
Scale 1:100

CEILING PLAN LEGEND

CH 2700 DENOTES LEVEL OF NEW FINISHED CEILING/BULKHEAD MEASURED FROM FINISHED FLOOR LEVEL.

SAS SYSTEM 330 ACCESSIBLE METAL PAN CEILING WITH LINEAR PLANK TILES AND EXPOSED FLUSH GRID WITH 150mm WIDE C-PROFILE SUSPENSION. 30mm DEEP TILE WITH 800g/m² ACOUSTIC BAY CLASS 4 ABSORPTION. TILE SIZE: 1500mm/1200mm & 900mm MODULES IN 300mm WIDTHS. COLOUR RAL 9016 GLOSS FINISH 20%. PERFORATION S1003 (1.0mm HOLE 3% OPENESS).

INDICATES EXTENT OF NEW PLASTERBOARD CEILINGS/ DROPPED BULKHEADS ETC. REFER TO PLAN FOR HEIGHTS ABOVE FFL. ALLOW FOR MOISTURE RESISTANT BOARDS IN WET AREAS.

SAS SYSTEM 130 SUSPENDED ACCESSIBLE CEILING SYSTEM 600x600mm TILE WITH SEALED 16mm ACOUSTIC PAD TO 80G/M² CLASS 4 ABSORPTION. PERFORATION STANDARD 1522 1.5mm HOLES 22% OPENESS, 3.6mm SQUARE FITCH AND 10mm FLAM BORDER. COLOUR RAL 9016. GRID: SAS ALUSID Q SYSTEM REF: Q15/16.

SAS SYSTEM 740 ACCESSIBLE LINEAR SLATED CEILING SYSTEM REF: SAS SYSTEM 740 PROFILE SIZE 100x40mm @150mm CENTRES. FINISHED IN A LIGHT TAMBER EFFECT FINISH. PERFORATION TBC. INSTALL 'WOODSTOMP' 50% SA BLACK SOUND ABSORBENT ACOUSTIC FOAM TO THE UNDERSIDE OF THE SOFFIT ABOVE OPEN AREAS OF CEILING. ALL CEILING VOID SERVICES AND SOFFIT IN THIS AREA TO BE SPRAYED/ BLOCKED OUT.

CEILING VOID ACOUSTIC BARRIER

CEILING VOID FIRE BARRIER

DENOTES SLAB TO SLAB PARTITIONS

PARTITIONS STOP +200mm ABOVE CEILING LEVEL

NOTE: PRIOR TO INSTALLATION OF ANY NEW CEILING VOID CAVITY BARRIERS, CONTRACTOR TO CHECK AND CONFIRM LOCATIONS OF ALL EXISTING CEILING VOID CAVITY BARRIERS

DENOTES CHANGE IN CEILING LEVEL

CEILING SERVICES & LIGHTING

FOR ALL LIGHTING/ GRILLE SPECIFICATIONS REFER TO MEP-PRO BUILDING SERVICES CONSULTANTS DRAWINGS AND SPECIFICATIONS FOR DETAILS.

DENOTES COORDINATED LINEAR GRILLE LOCATION

FIRE EXIT SIGNAGE

FIRE EXIT SIGN AHEAD (SINGLE SIDED)

FIRE EXIT SIGN LEFT/RIGHT (SINGLE/DOUBLE SIDED WHERE APPLICABLE)

ALL NEW FIRE EXIT SIGNAGE TO COMPLY WITH BS5499 PARTS 4 & 5. ALL EMERGENCY SIGNAGE TO BE RECESSED LED ILLUMINATED ACRYLIC FIRE EXIT SIGNS. ALL EMERGENCY SIGNAGE SUBJECT TO LOCAL AUTHORITY APPROVAL.

BLINDS

CONTACT: IAN TAYLOR AT ILE SOLUTIONS TEL: 07803 452714 FOR ALL PERIMETER WINDOW TREATMENTS WWW.ILESOLUTIONS.COM

TYPE 1 - MANUALLY OPERATED DRAPER JOI ROLLER BLIND SECURED IN BLIND SECURED IN BLIND BOX DETAIL (120x120mm) ABOVE WINDOW LOCATIONS. FABRIC: TRANSPARENT SHADECLOTH. COLOUR: TBA WITH CLIENT

TYPE 2 - MOTOR OPERATED SINGLE SHADE DRAPER ROLLER SCREEN SYSTEM SECURED IN BLIND BOX DETAIL (120x120mm) ABOVE WINDOW LOCATIONS. FABRIC: TRANSPARENT SHADECLOTH. COLOUR: TBA WITH CLIENT

TYPE 3 - ROMAN BLIND MANUALLY OPERATED TO SUIT WINDOW BAY SIZES. FABRIC: VESCOM LURAN - COLOUR TBA WITH CLIENT ALLOW FOR LINING

LC Issued for Tender. 11.10.18
Rev. | Drawn | Description | Date



Client Chambers 7BR

Project 7 Bedford Row,
London WC1R 4BS

Drawing Proposed Lower Ground & Ground Floor
Reflected Ceiling Plans

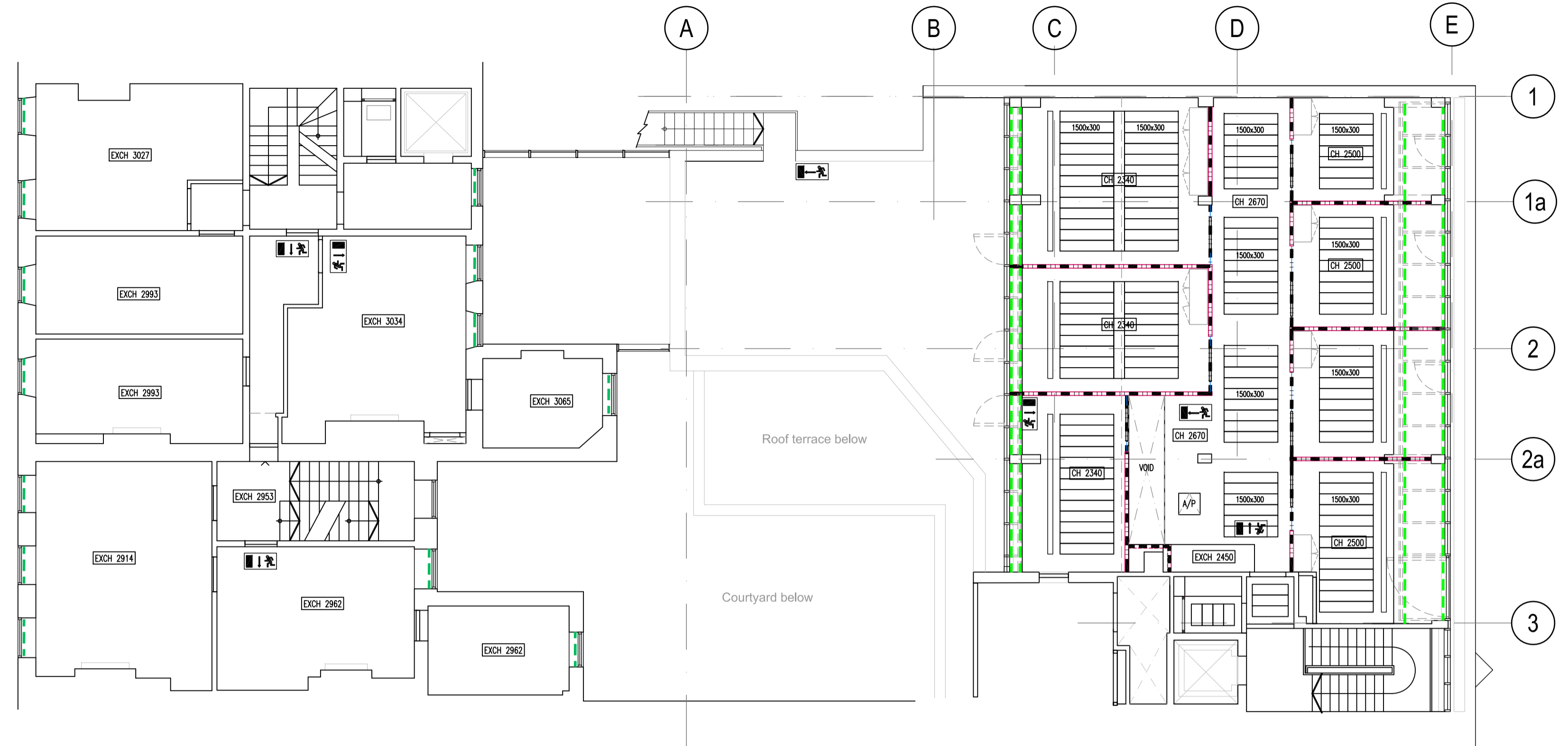
Drawing Status TENDER

Scale 1:100@A1 Cad file -2332 GALG-0G

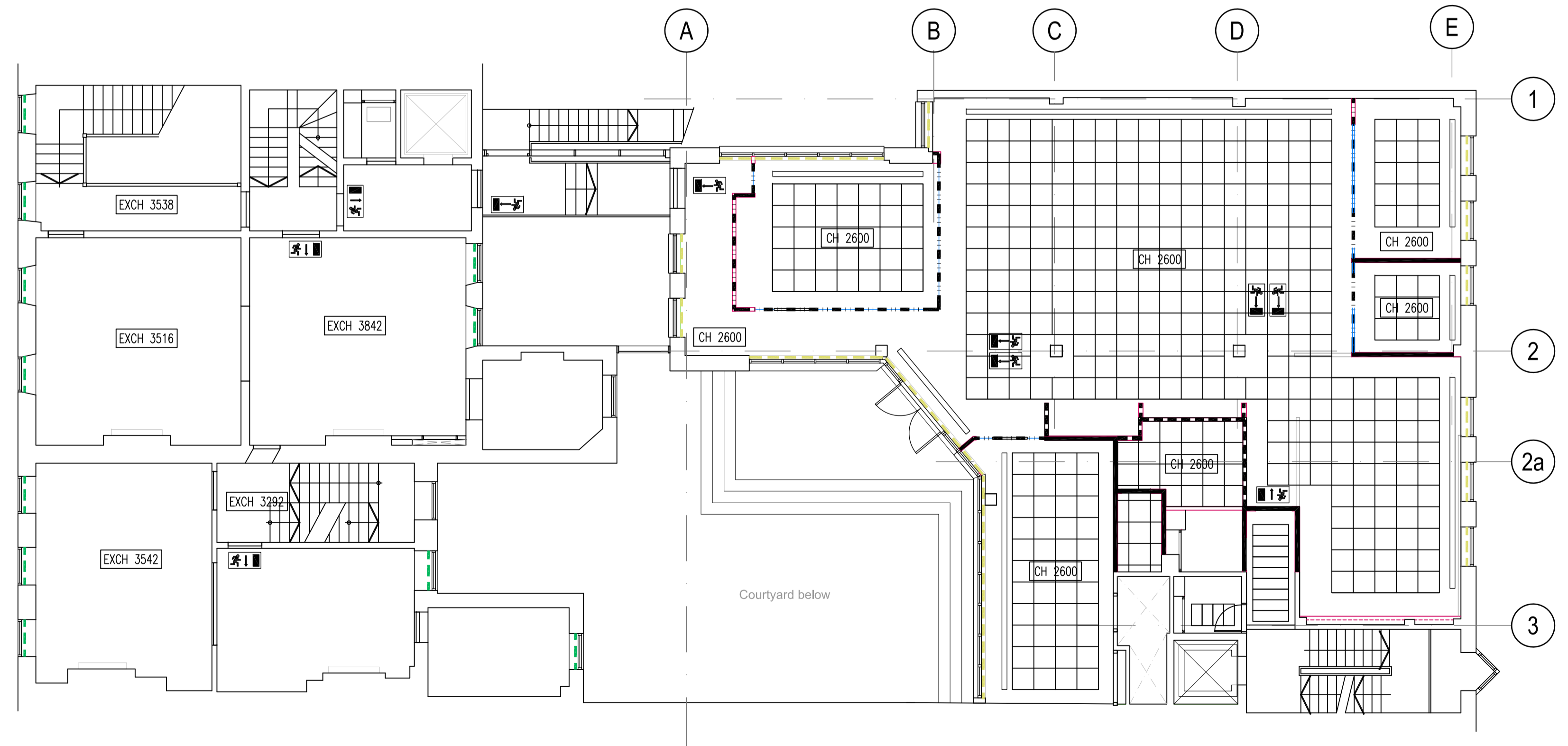
Drawn by LC Project no. 172332

Checked by JM Drawing no. RCPLG-0G

Date SEPT 2018 Revision -



B Second floor plan
Scale 1:100



A First floor plan
Scale 1:100

CEILING PLAN LEGEND

CH 2700 DENOTES LEVEL OF NEW FINISHED CEILING/BULKHEAD MEASURED FROM FINISHED FLOOR LEVEL.

SAS SYSTEM 330 ACCESSIBLE METAL PAN CEILING WITH LINEAR PLANK TILES AND EXPOSED FLUSH GRID WITH 150mm WIDE C-PROFILE SUSPENSION. 30mm DEEP TILE WITH 80kg/m² ACOUSTIC INLAY CLASS 4 ABSORPTION. TILE SIZE: 1500mm/1200mm & 900mm MODULES IN 300mm WIDTHS. COLOUR RAL 9016 GLOSS FINISH 20%. PERFORATION S1003 (1.0mm HOLE 3% OPENESS).

SAS SYSTEM 130 SUSPENDED ACCESSIBLE CEILING SYSTEM 600x600mm TILE WITH SEALED 16mm ACOUSTIC PAD TO 80kg/m² CLASS 4 ABSORPTION. PERFORATION: STANDARD 1522 1.5mm HOLES 22% OPENESS, 3.6mm SQUARE FITCH AND 10mm FLAM BORDER. COLOUR RAL 9016. GRID: SAS ALUSRID Q SYSTEM REF: Q15/16.

SAS SYSTEM 740 ACCESSIBLE LINEAR SLATED CEILING SYSTEM REF: SAS SYSTEM 740 PROFILE SIZE 100x40mm @150mm CENTRES. FINISHED IN A LIGHT TAMBER EFFECT FINISH. PERFORATION TBC. INSTALL 'COSSITOP' CH 5A BLACK SLATED ABSORBER W/ ACOUSTIC FOAM TO THE UNDERSIDE OF THE SOFFIT ABOVE OPEN AREAS OF CEILING. ALL CEILING VOID SERVICES AND SOFFIT IN THIS AREA TO BE SPRAYED/ BLOCKED OUT.

INDICATES EXTENT OF NEW PLASTERBOARD CEILINGS/ DROPPED BULKHEADS ETC. REFER TO PLAN FOR HEIGHTS ABOVE FFL. ALLOW FOR MOISTURE RESISTANT BOARDS IN WET AREAS.

CEILING VOID ACOUSTIC BARRIER

CEILING VOID FIRE BARRIER

DENOTES SLAB TO SLAB PARTITIONS

PARTITIONS STOP +200mm ABOVE CEILING LEVEL

NOTE: PRIOR TO INSTALLATION OF ANY NEW CEILING VOID CAVITY BARRIERS, CONTRACTOR TO CHECK AND CONFIRM LOCATIONS OF ALL EXISTING CEILING VOID CAVITY BARRIERS

DENOTES CHANGE IN CEILING LEVEL

CEILING SERVICES & LIGHTING

FOR ALL LIGHTING/ GRILLE SPECIFICATIONS REFER TO MEP-PRO BUILDING SERVICES CONSULTANTS DRAWINGS AND SPECIFICATIONS FOR DETAILS.

DENOTES COORDINATED LINEAR GRILLE LOCATION

FIRE EXIT SIGNAGE

FIRE EXIT SIGN AHEAD (SINGLE SIDED)

FIRE EXIT SIGN LEFT/RIGHT (SINGLE/DOUBLE SIDED WHERE APPLICABLE)

ALL NEW FIRE EXIT SIGNAGE TO COMPLY WITH BS5499 PARTS 4 & 5. ALL EMERGENCY SIGNAGE TO BE RECESSED LED ILLUMINATED ACRYLIC FIRE EXIT SIGNS. ALL EMERGENCY SIGNAGE SUBJECT TO LOCAL AUTHORITY APPROVAL.

BLINDS

CONTACT: IAN TAYLOR AT ILE SOLUTIONS TEL: 07803 452714 FOR ALL PERIMETER WINDOW TREATMENTS WWW.ILESOLUTIONS.COM

TYPE 1 - MANUALLY OPERATED DRAPER JO ROLLER BLIND SECURED IN BLIND BOX DETAIL (120x120mm) ABOVE WINDOW LOCATIONS. FABRIC: TRANSPARENT SHADE/CLOTH. COLOUR: TBA WITH CLIENT. FABRIC OPENESS: TBA WITH CLIENT.

TYPE 2 - MOTOR OPERATED SINGLE SHADE DRAPER ROLLER SCREEN SYSTEM SECURED IN BLIND BOX DETAIL (120x120mm) ABOVE WINDOW LOCATIONS. FABRIC: TRANSPARENT SHADE/CLOTH. COLOUR: TBA WITH CLIENT. FABRIC OPENESS: TBA WITH CLIENT.

TYPE 3 - ROMAN BLIND MANUALLY OPERATED TO SUIT WINDOW BAY SIZES. FABRIC: WESCOM URAN - COLOUR TBA WITH CLIENT. ALLOW FOR LINING.

TYPE 4 - SKYLIGHT SHADING SYSTEM BY SILENT GLISS REF: 2190 CRANK OPERATED WINTERGARDEN SYSTEM TO SUIT WINDOW MULLION WIDTHS. FABRIC: WESCOM URAN - COLOUR TBA WITH CLIENT. ALLOW FOR LINING.

LC	Issued for Tender.	11.10.18
Rev.	Drawn / Description	Date



Client: Chambers 7BR

Project: 7 Bedford Row, London WC1R 4BS

Drawing: Proposed First Floor & Second Floor Reflected Ceiling Plans

Drawing Status	TENDER	
Scale	1:100@A1	Cad file -2332 GA01-02
Drawn by	LC	Project no. 172332
Checked by	JM	Drawing no. RCP01-02
Date	SEPT 2018	Revision -