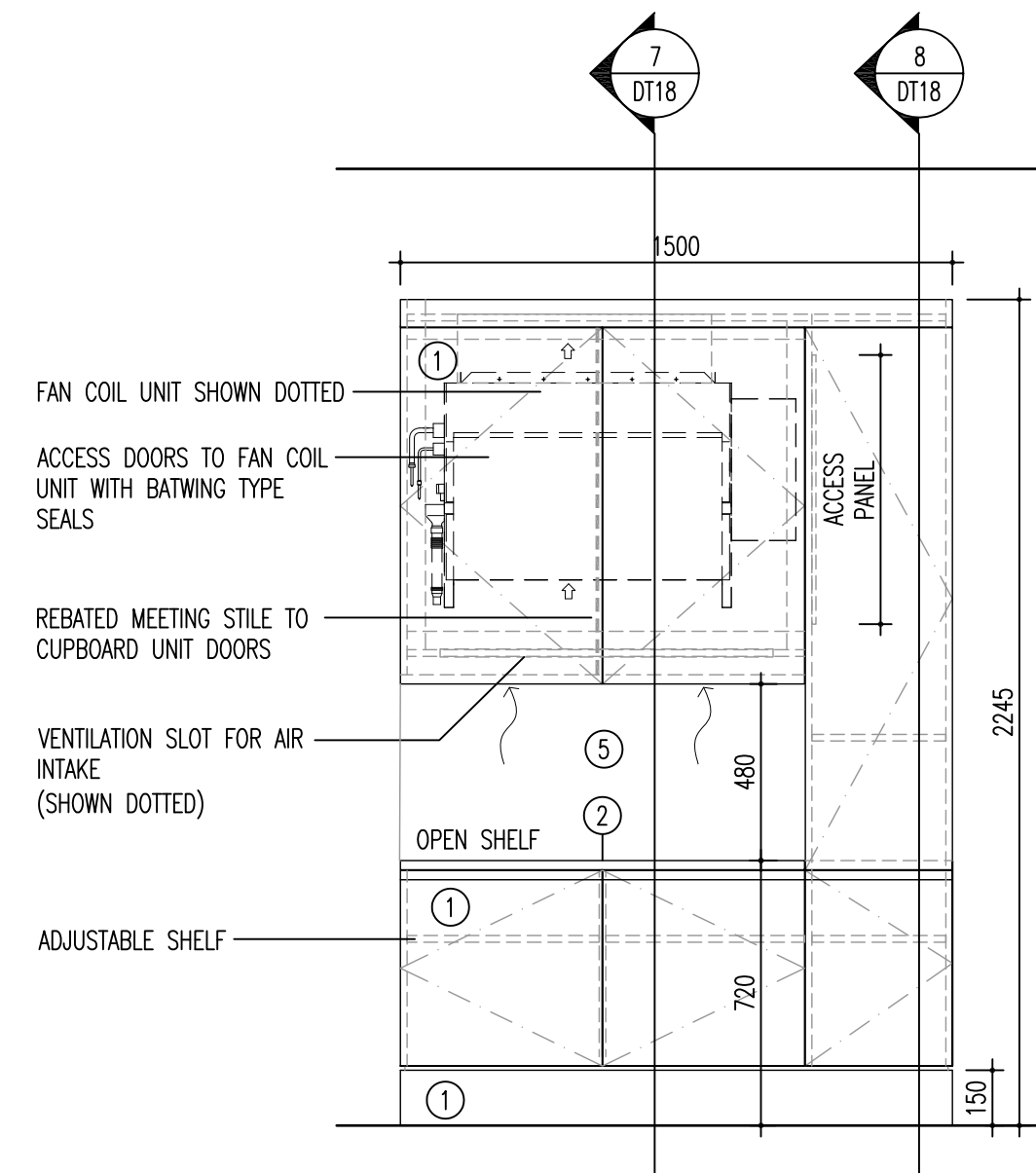


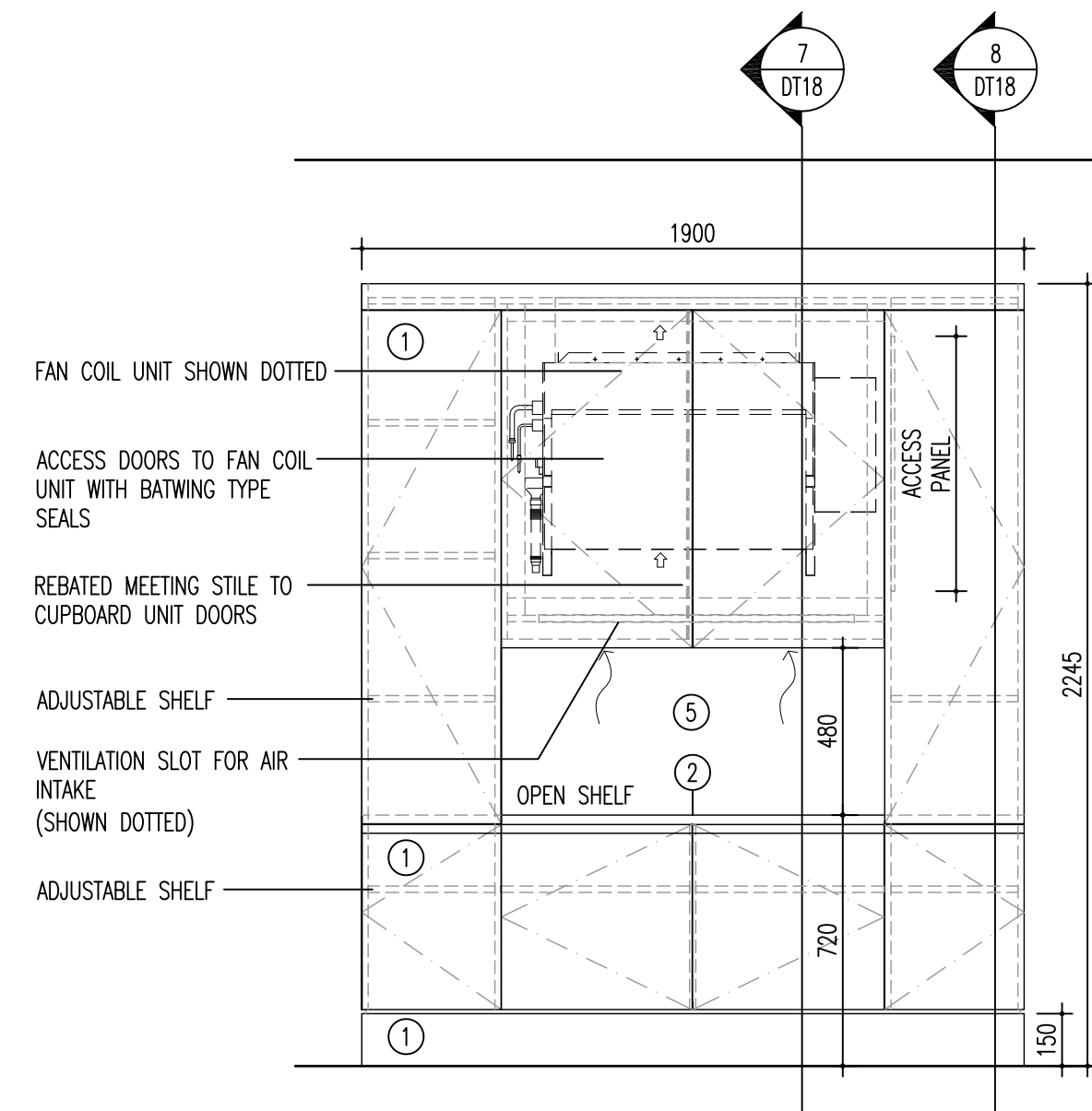
**1 Type A - Front Elevation**  
Scale 1:20

**2 Side Elevation**  
Scale 1:20



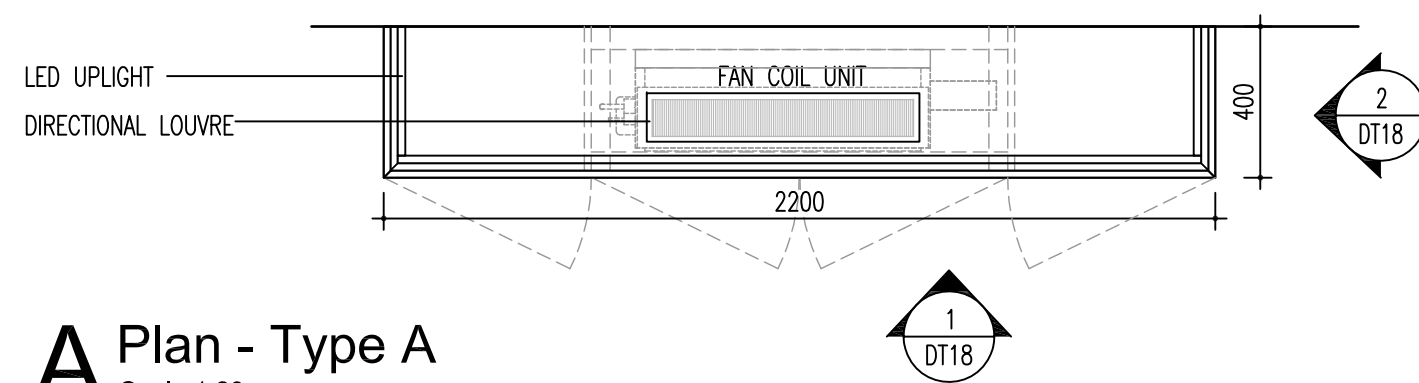
**3 Type B - Front Elevation**  
Scale 1:20  
UNIT HANDING TO VARY TO SUIT SITE CONDITIONS

**4 Side Elevation**  
Scale 1:20

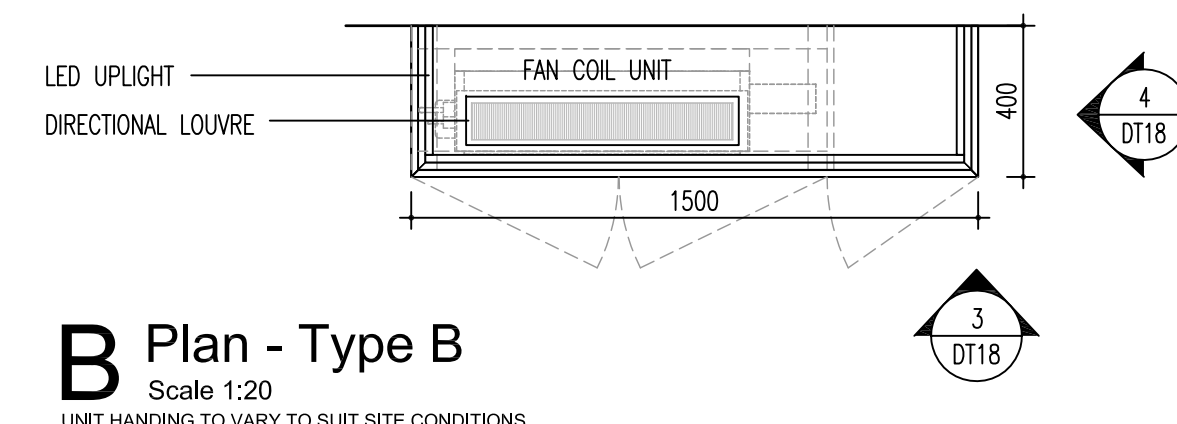


**5 Type C - Front Elevation**  
Scale 1:20

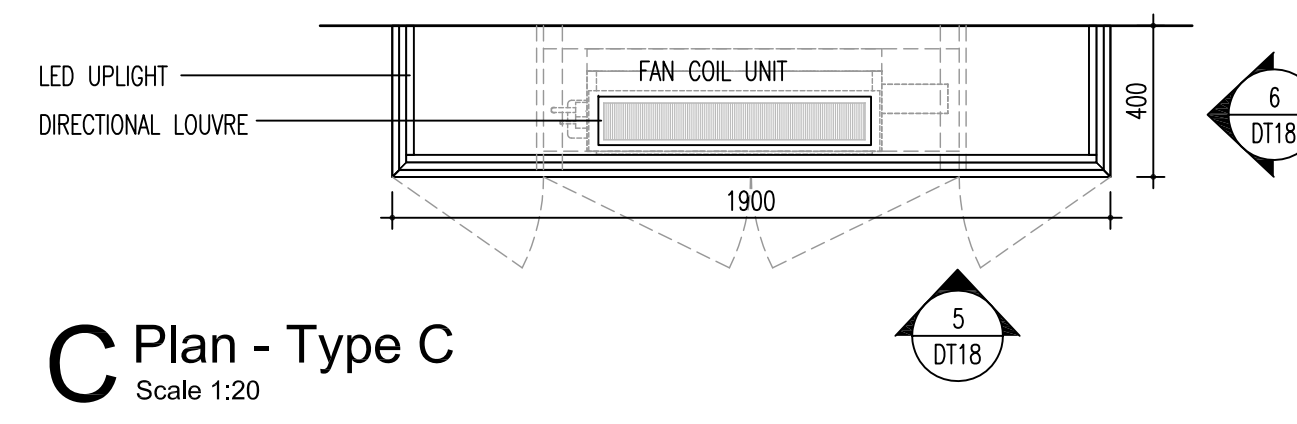
**6 Side Elevation**  
Scale 1:20



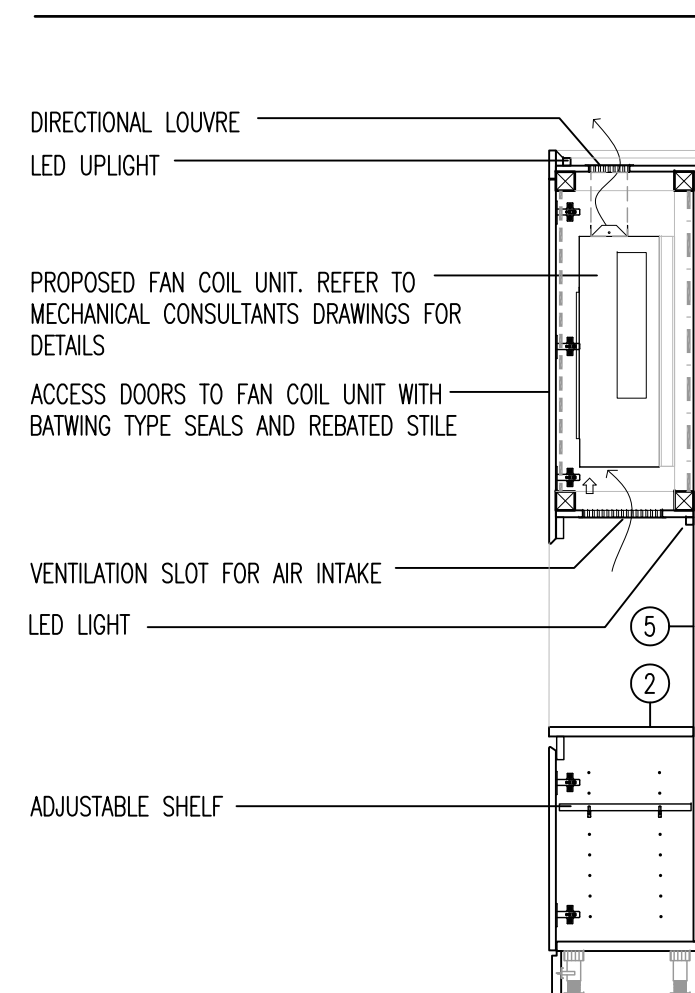
**A Plan - Type A**  
Scale 1:20



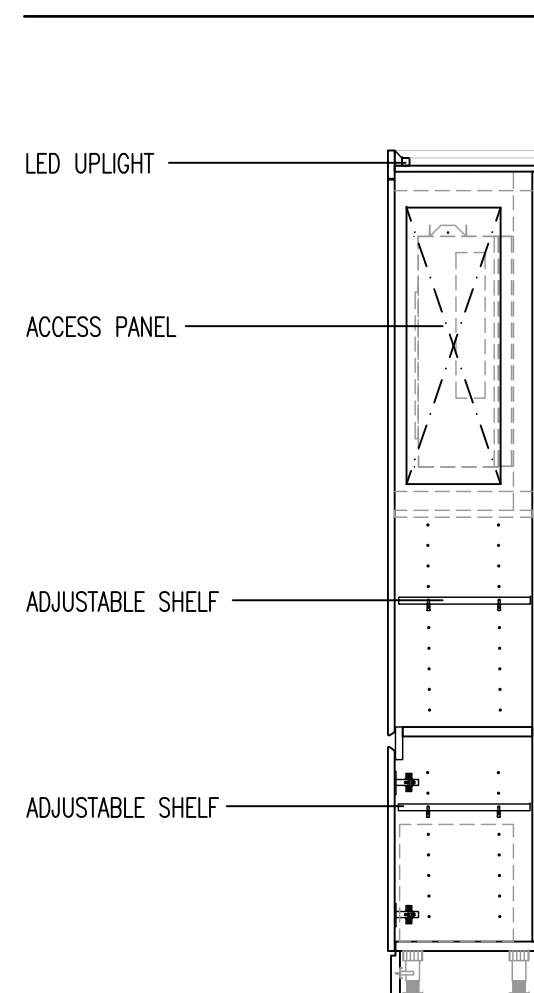
**B Plan - Type B**  
Scale 1:20  
UNIT HANDING TO VARY TO SUIT SITE CONDITIONS



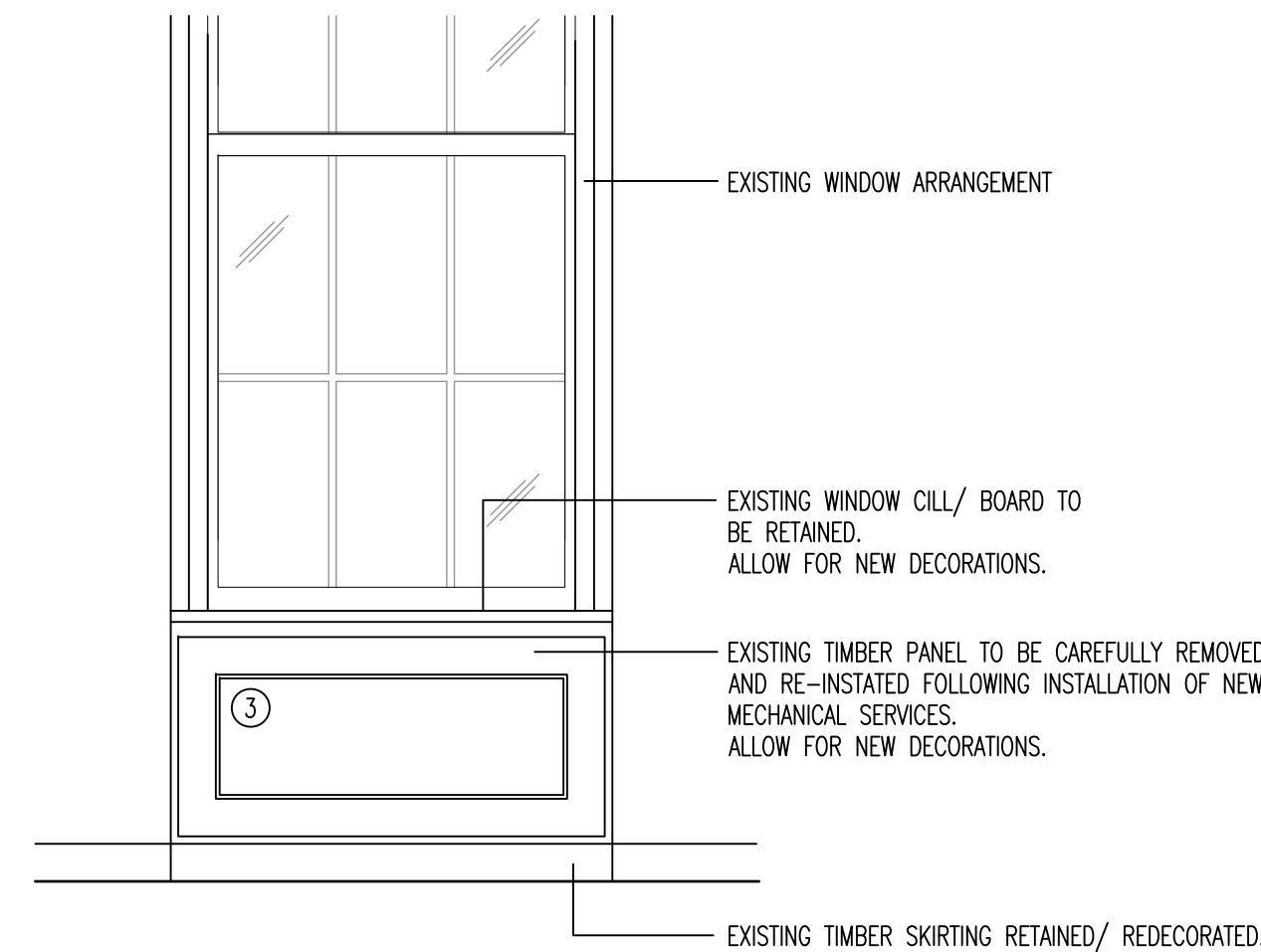
**C Plan - Type C**  
Scale 1:20



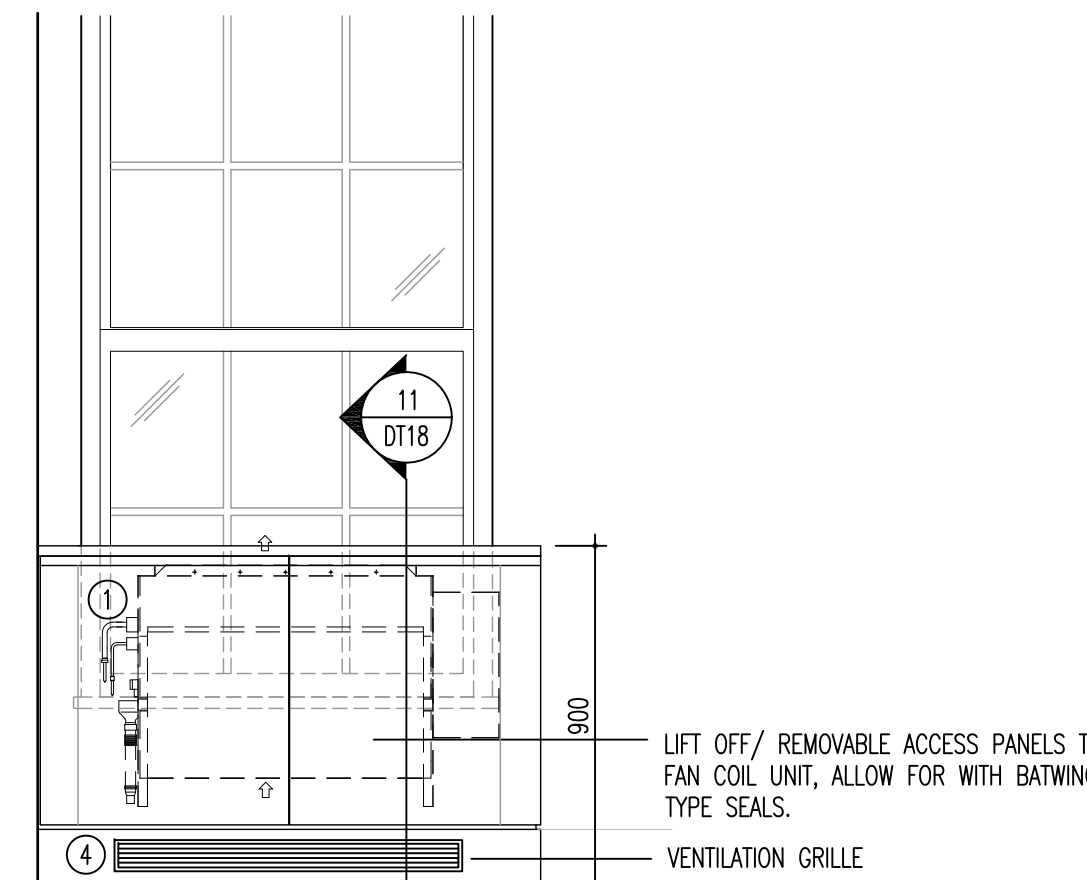
**7 Typical Section**  
Scale 1:20



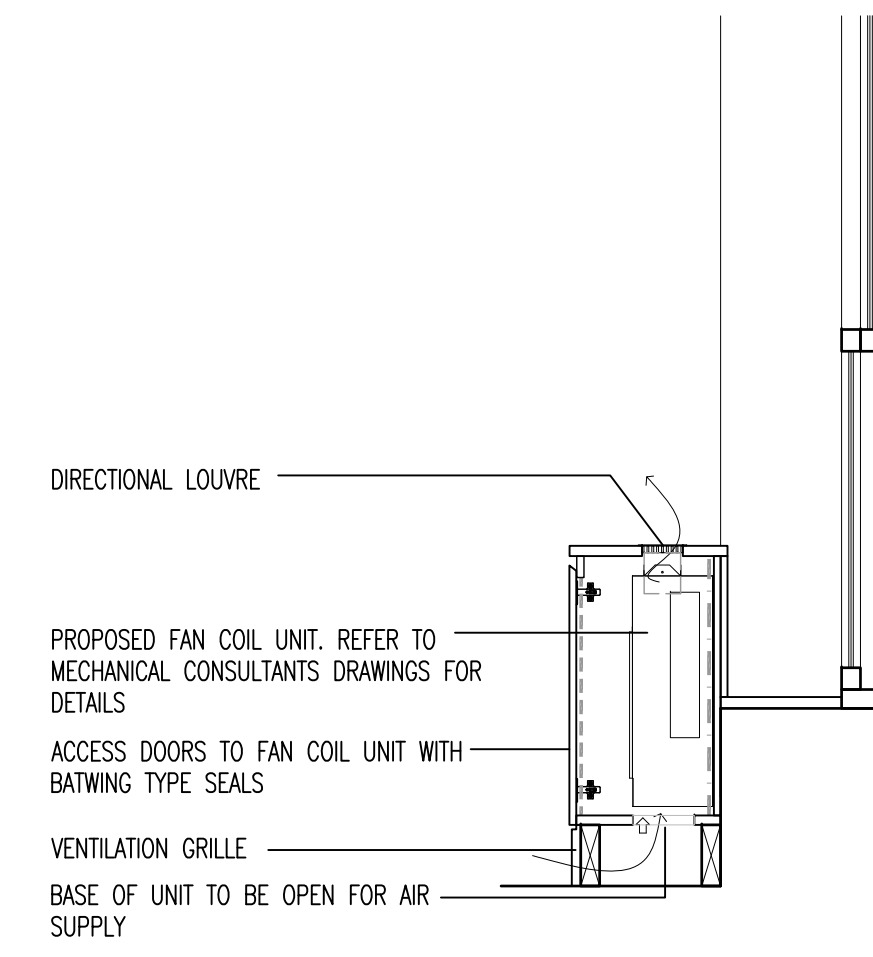
**8 Typical Section**  
Scale 1:20



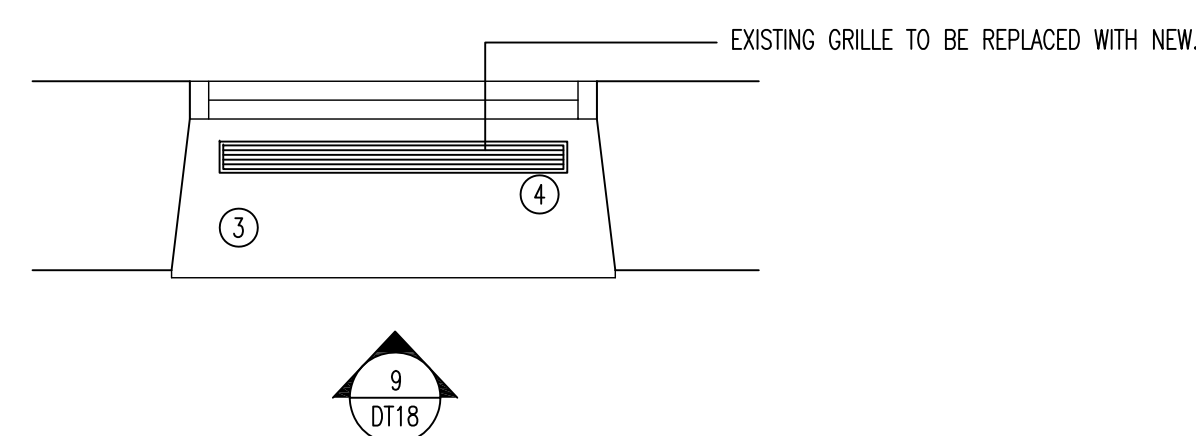
**9 Type D - Elevation**  
Scale 1:20



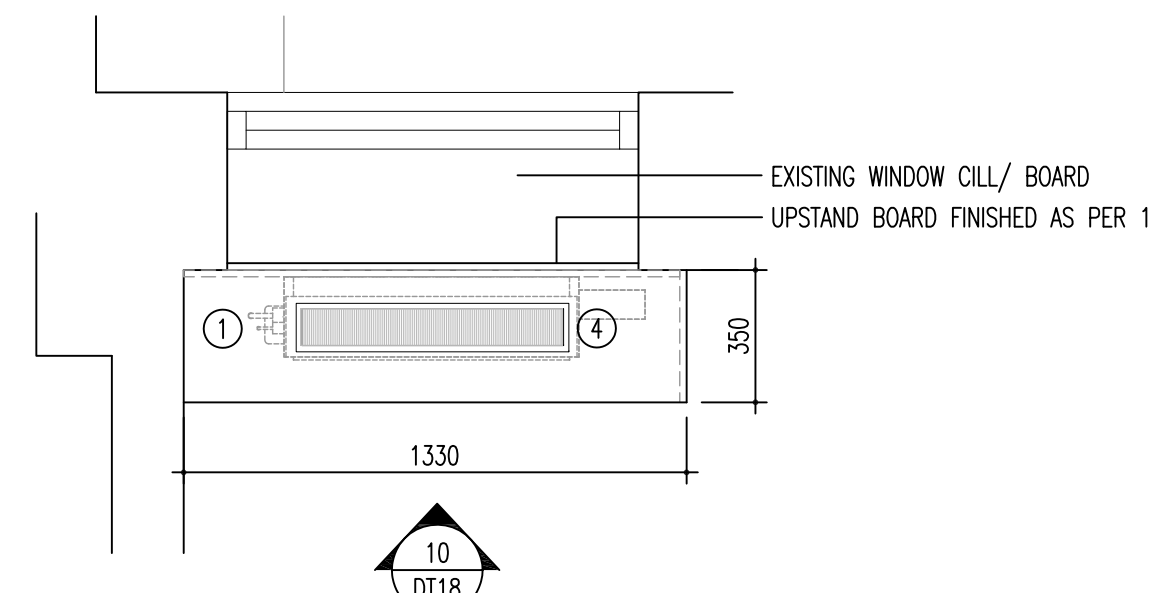
**10 Type E - Elevation**  
Scale 1:20



**11 Section**  
Scale 1:20



**D Plan - Type D**  
Scale 1:20



**E Plan - Type E**  
Scale 1:20

#### GENERAL NOTES:

- THIS DRAWING IS TO BE READ IN CONJUNCTION WITH GENERAL ARRANGEMENT PANS SHOWING LOCATIONS OF FAN COIL UNIT LOCATIONS AND TYPE.
- JOINERY SUB-CONTRACTOR TO COORDINATE JOINERY UNITS SIZE AND ACCESS REQUIREMENTS WITH FINAL FAN COIL UNIT SPECIFICATION

#### SPECIFICATION:

- TIMBER VENEER FINISH STRAIGHT GRAIN LAID VERTICALLY. REFER TO APPROVED HARDWOOD VENEER CONTROL SAMPLE.
- SHELF TO MATCH DOORS.
- EXISTING HARDWOOD PANELS PAINTED TO MATCH EXISTING.
- GRILLE - DARK BRONZE ANODISED FINISH.
- BACK PANEL - MATT BLACK LAMINATE POLYREF REF: TBC.

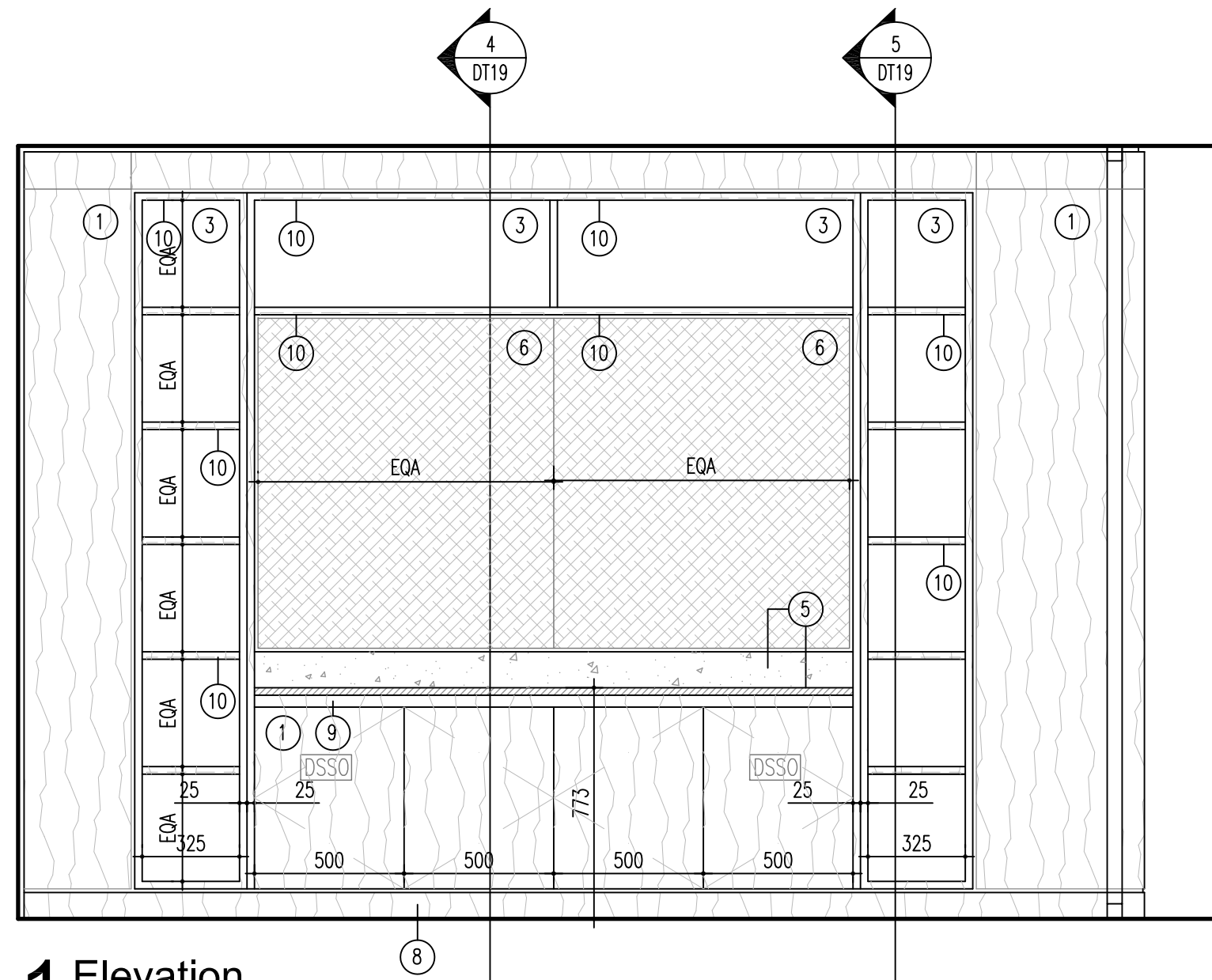
- ACUSTIC FOAM LINING TO SIDES AND REAR OF FAN COIL UNIT ENCLOSURE
- OPTIONAL ACUSTIC FOAM LINING TO REAR OF DOOR - SUBJECT TO EQUUS PARTNERSHIP ACUSTIC REPORT/ FINDINGS FOLLOWING FAN COIL UNIT SPECIFICATION

LC	Issued for Tender.	11.10.18
Rev	Drawn	Description
Date		

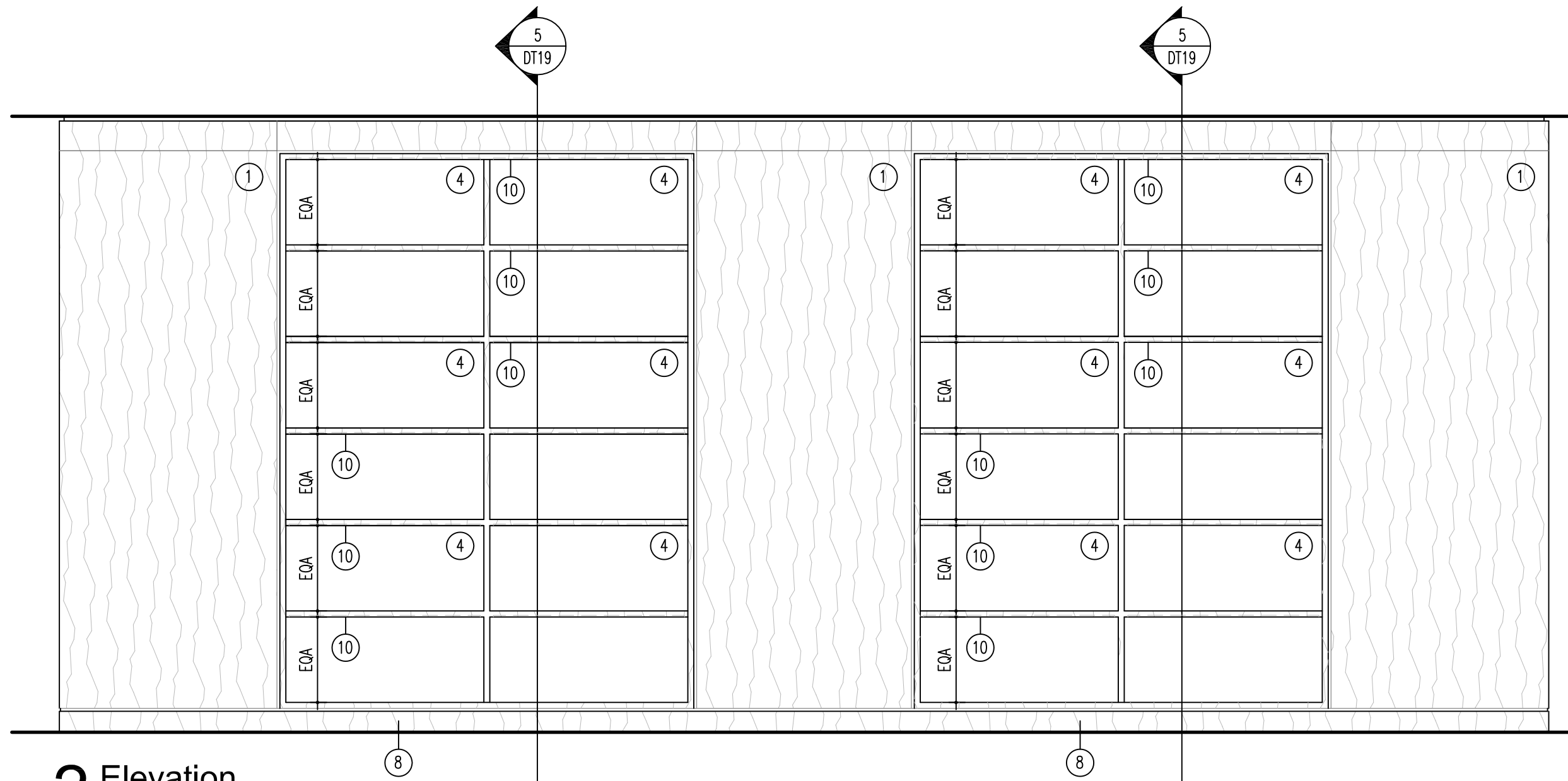
**Mansfield Monk**

Client	Chambers 7BR		
Project	7 Bedford Row London WC1R 4BS		
Drawing	Typical A/C Enclosing Joinery Unit Plan, Elevation & Section details (Bedford Row Building only)		
Drawing Status	TENDER		
Scale	1:10@A1	Cad file	-2332 DT18
Drawn by	AW	Project no.	172332
Checked by	LC	Drawing no.	DT18
Date	Sept 2018	Revision	

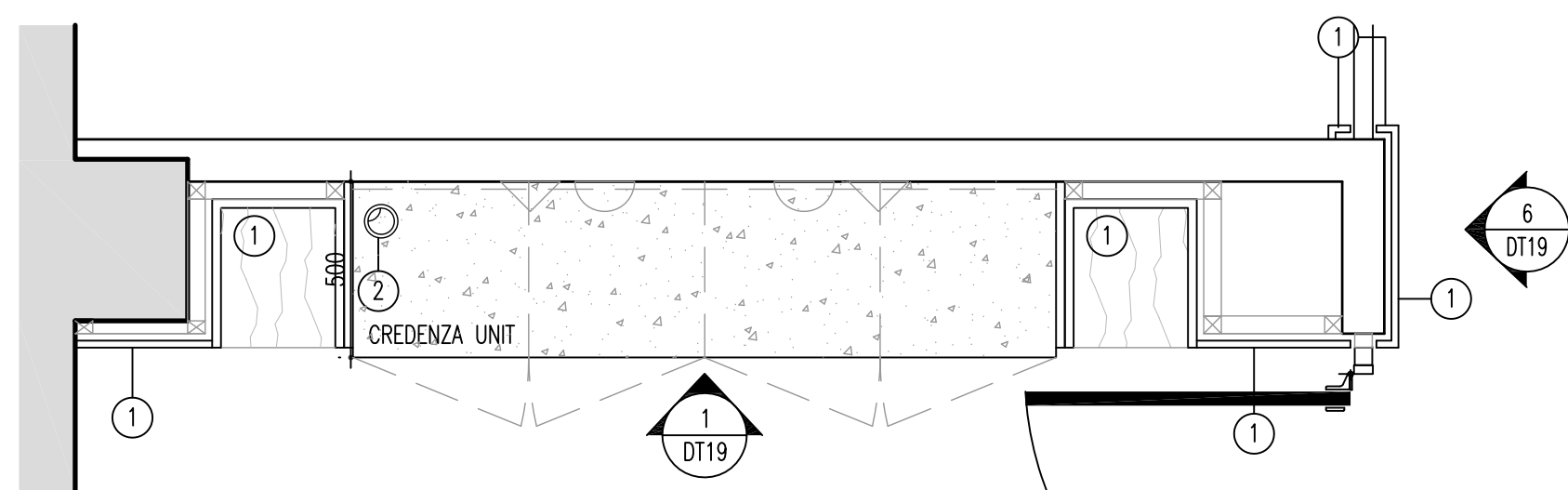




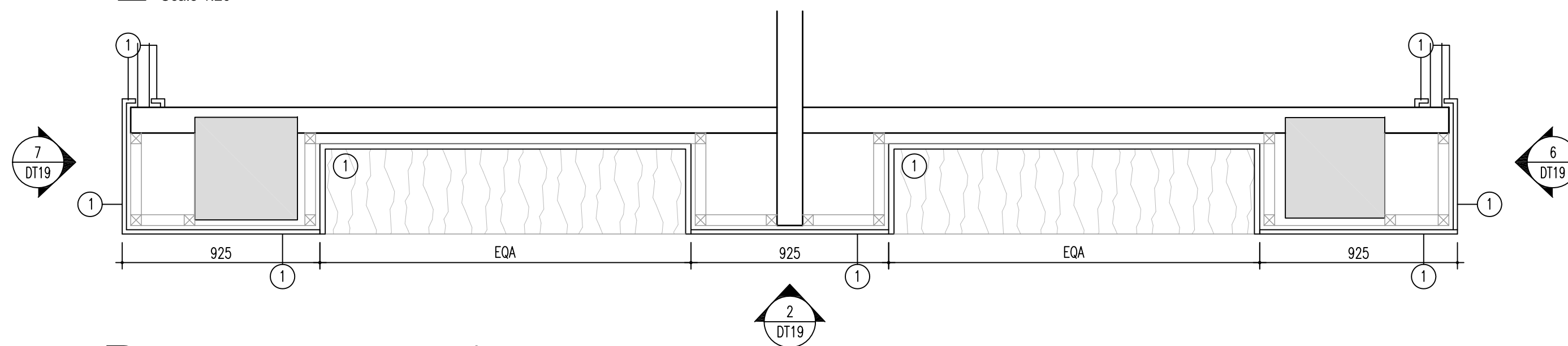
**1 Elevation**  
Scale 1:20



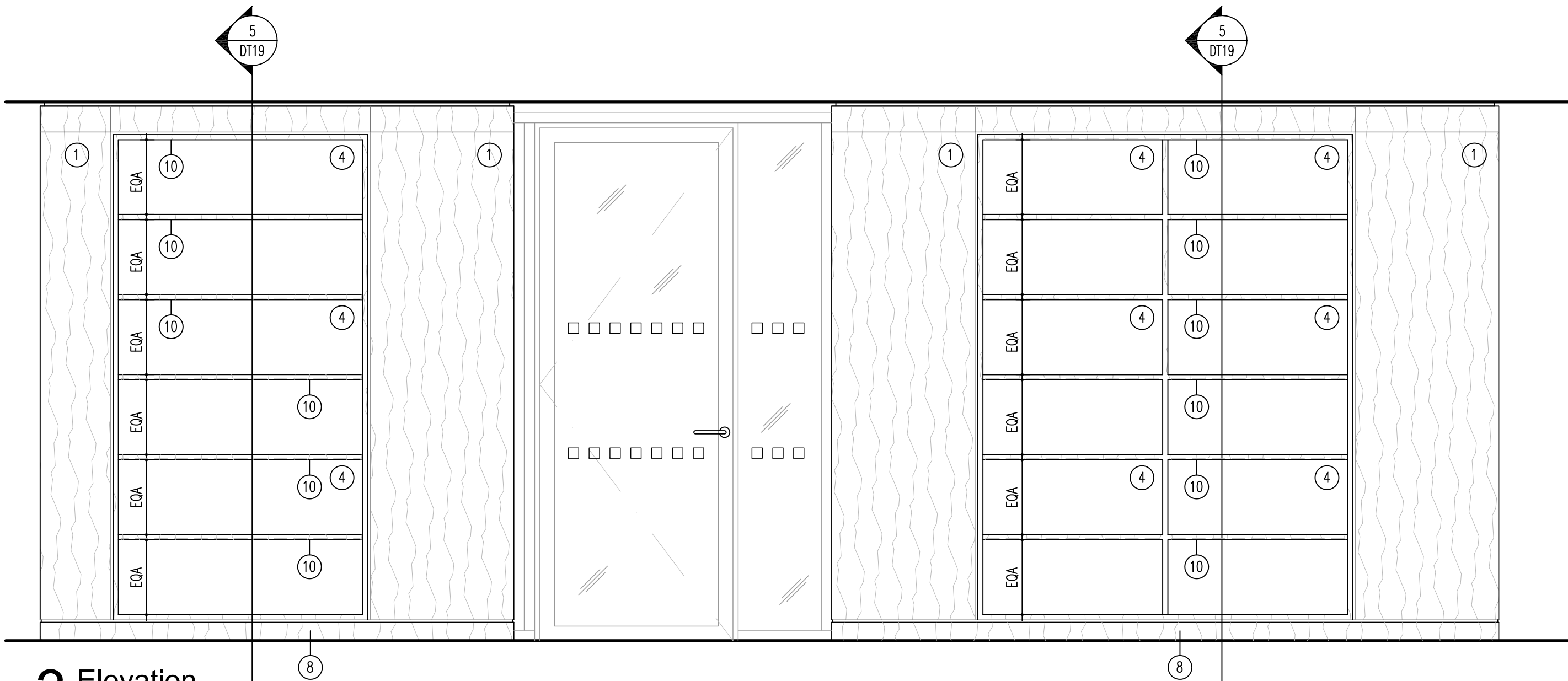
**2 Elevation**  
Scale 1:20



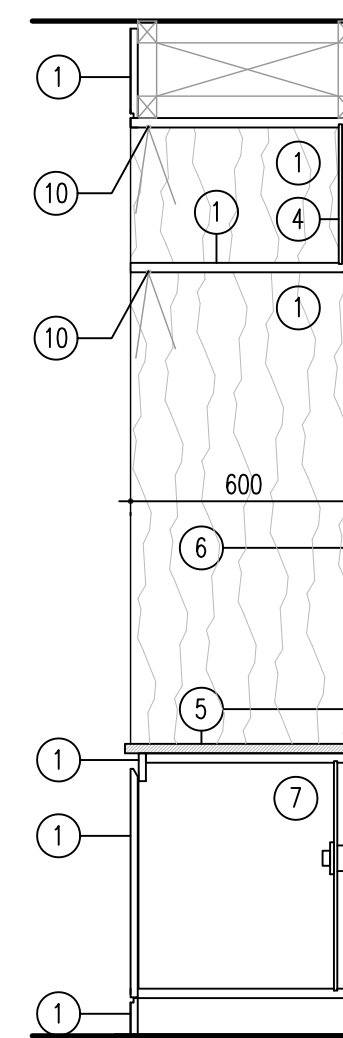
**A Meeting room credenza/ joinery unit**  
Scale 1:20



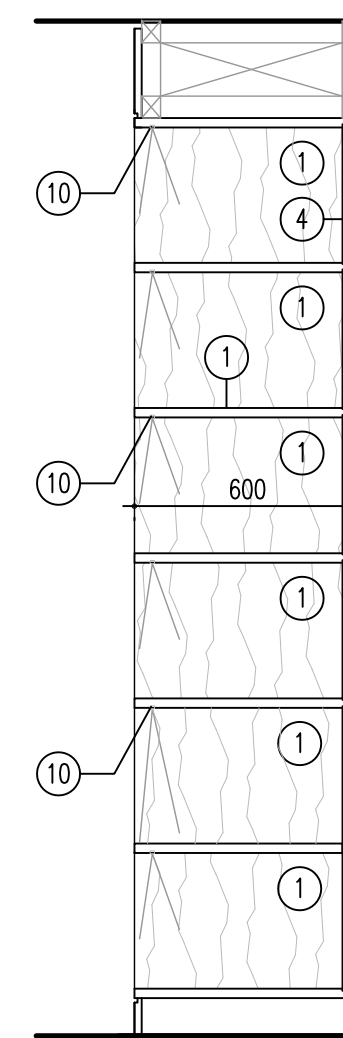
**B Meeting room credenza/ joinery unit**  
Scale 1:20



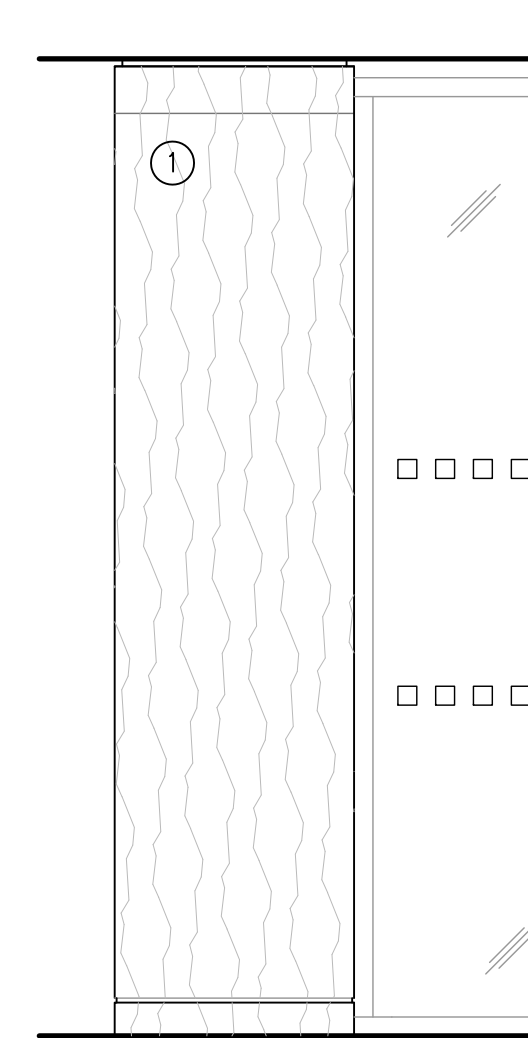
**3 Elevation**  
Scale 1:20



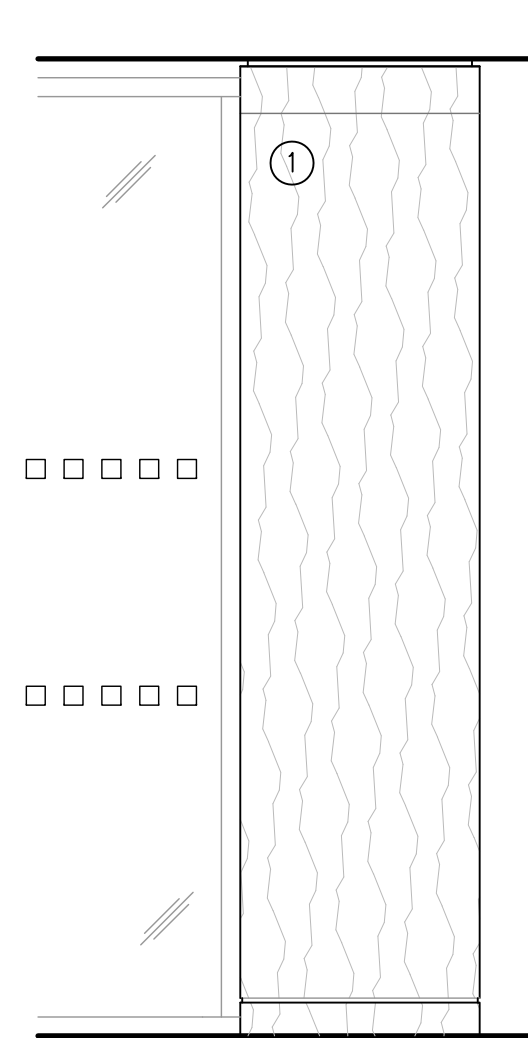
**4 Section**  
Scale 1:20



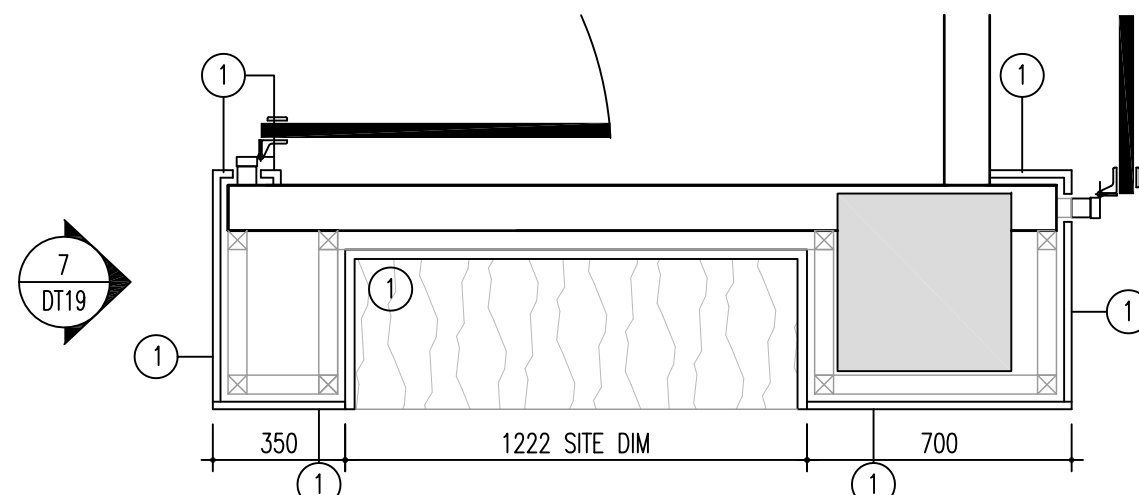
**5 Section**  
Scale 1:20



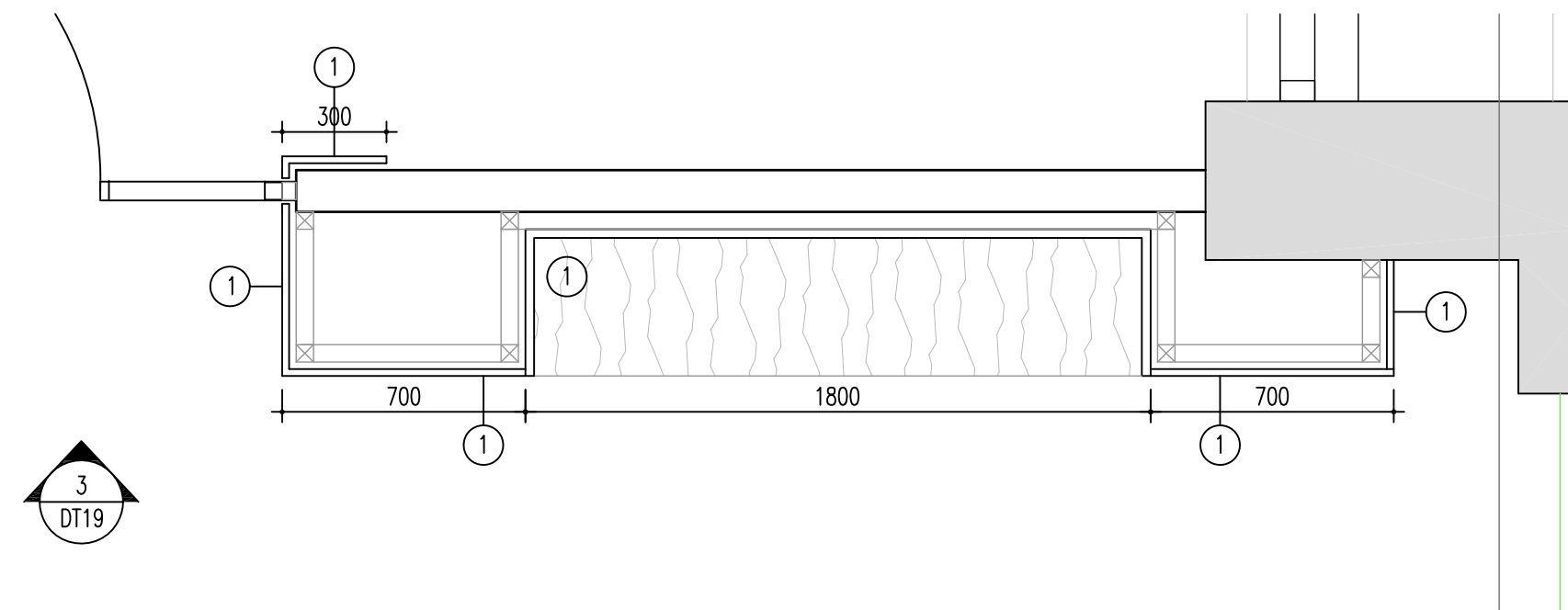
**6 Elevation**  
Scale 1:20



**7 Elevation**  
Scale 1:20



**C Meeting room credenza/ joinery unit**  
Scale 1:20



**3 DT19**

## SPECIFICATION:

- HARDWOOD TIMBER VENEER FINISH STRAIGHT GRAIN LAID VERTICALLY  
REFER TO APPROVED HARDWOOD VENEER CONTROL SAMPLE.  
DOORS MOUNTED ON SPRING BLUM HINGES WITH 'SMOOTH PISTON'-  
DOOR BUFFERS TO THE STORAGE DOORS.

NOTE: SCRIBE PANELS TO MATCH PLINTH & TOP RAIL FINISH.

TIMBER FINISH TO MATCH PROPOSED IMAGES IN LOOK AND FEEL DOCUMENT

- GROMMET FOR POWER & DATA TO PRINTER. REF: 80mmØ GROMMET  
FINISH: POLISHED CHROME. REFER TO SPEC SHEET 02
- LAMINATE FACED BACK PANEL - REF: POLYREY COLOUR TBC
- LAMINATE FACED BACK PANEL - REF: POLYREY COLOUR TBC
- 20mm THICK DOMUS CHROMASTONE DTS MN 601  
POLISHED TOP & UPSTAND/ EXPOSED EDGES
- WALL MOUNTED FABRIC WRAPPED KVADRAT SOFT CELLS PANEL  
FABRIC REF: CANVAS 2 COLOUR 124
- CARCASS INTERNALS TO BE LAMINATE FACED IN A BLACK MATT FINISH  
POLYREY: COLOUR NO05 NOIR
- SKIRTING/ PLINTH FINISHED TO MATCH DOOR FINISH  
VERTICAL GRAIN DIRECTION TO MATCH DOORS
- TOP RAIL FINISHED AS PER DOOR FINISH  
VERTICAL GRAIN DIRECTION TO MATCH DOORS
- LED LIGHTING WITH DIFFUSER CONCEALED UNDER  
EACH & EVERY SHELVING UNIT

REFER TO MEPRO LTD MECHANICAL & ELECTRICAL ENGINEERS DRAWINGS FOR  
POWER & DATA REQUIREMENTS

ALL POWER/ DATA INDICATED ON ELEVATIONS IS INDICATIVE ONLY

JOINERY SUB-CONTRACTOR TO PROVIDE RODS FOR SIGN APPROVAL  
PRIOR TO MANUFACTURER/ CONSTRUCTION.

DATA SOCKET

TWIN 13AMP SSO

LC Issued for Tender. 11.10.18  
Rev. Drawn Description Date

**Mansfield Monk**

Client **Chambers 7BR**

Project **7 Bedford Row  
London WC1R 4BS**

Drawing **Ground Floor  
Shelving units elevations & section details**

Drawing Status **TENDER**

Scale **1:20@A1** Cad file **-2332 DT19**

Drawn by **PDW** Project no. **172332**

Checked by **LC** Drawing no. **DT19**

Date **Sept 2018** Revision **-**

Library House High Street Ingatestone Essex CM4 9EU T 01277 351981 W www.mansfieldmonk.co.uk

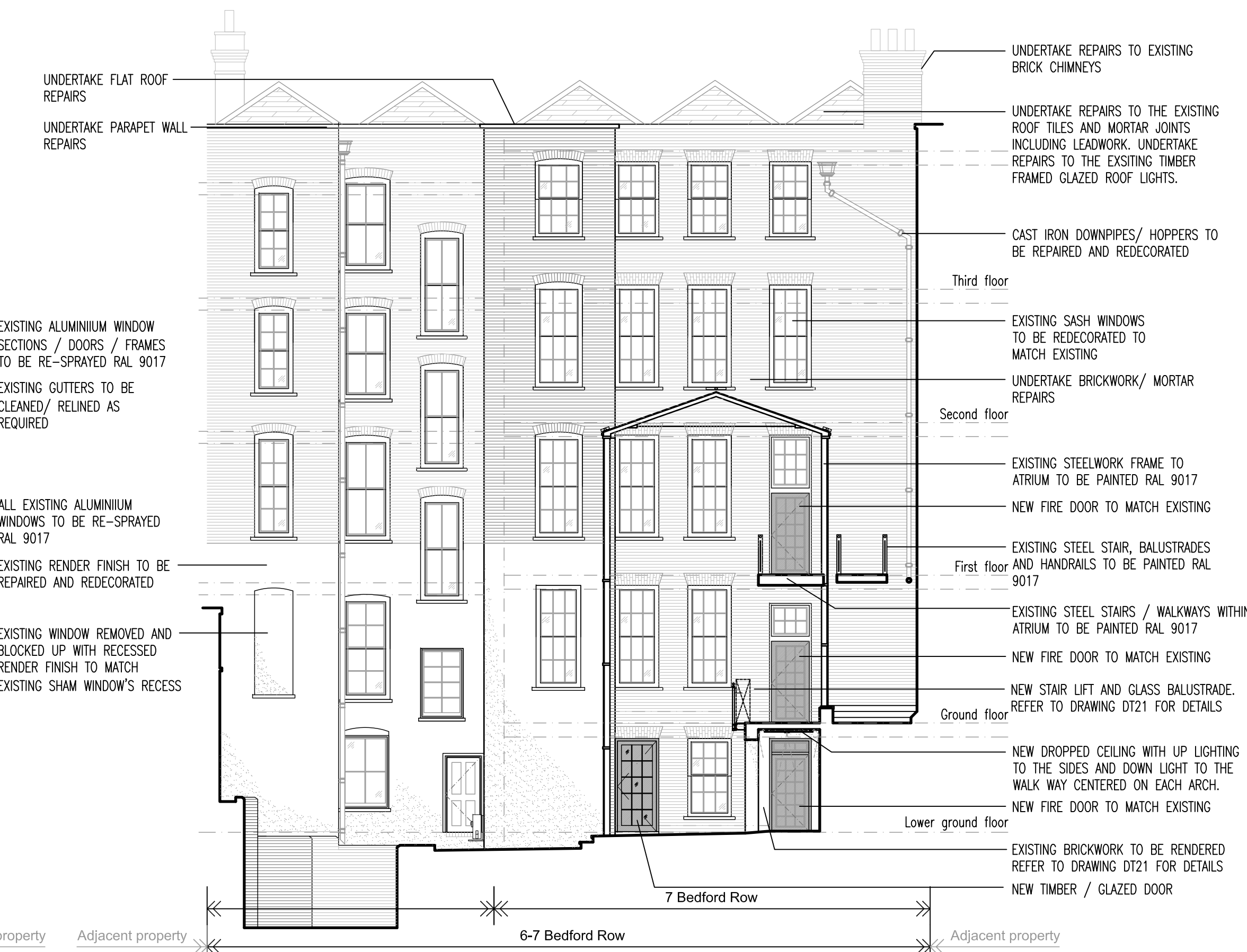




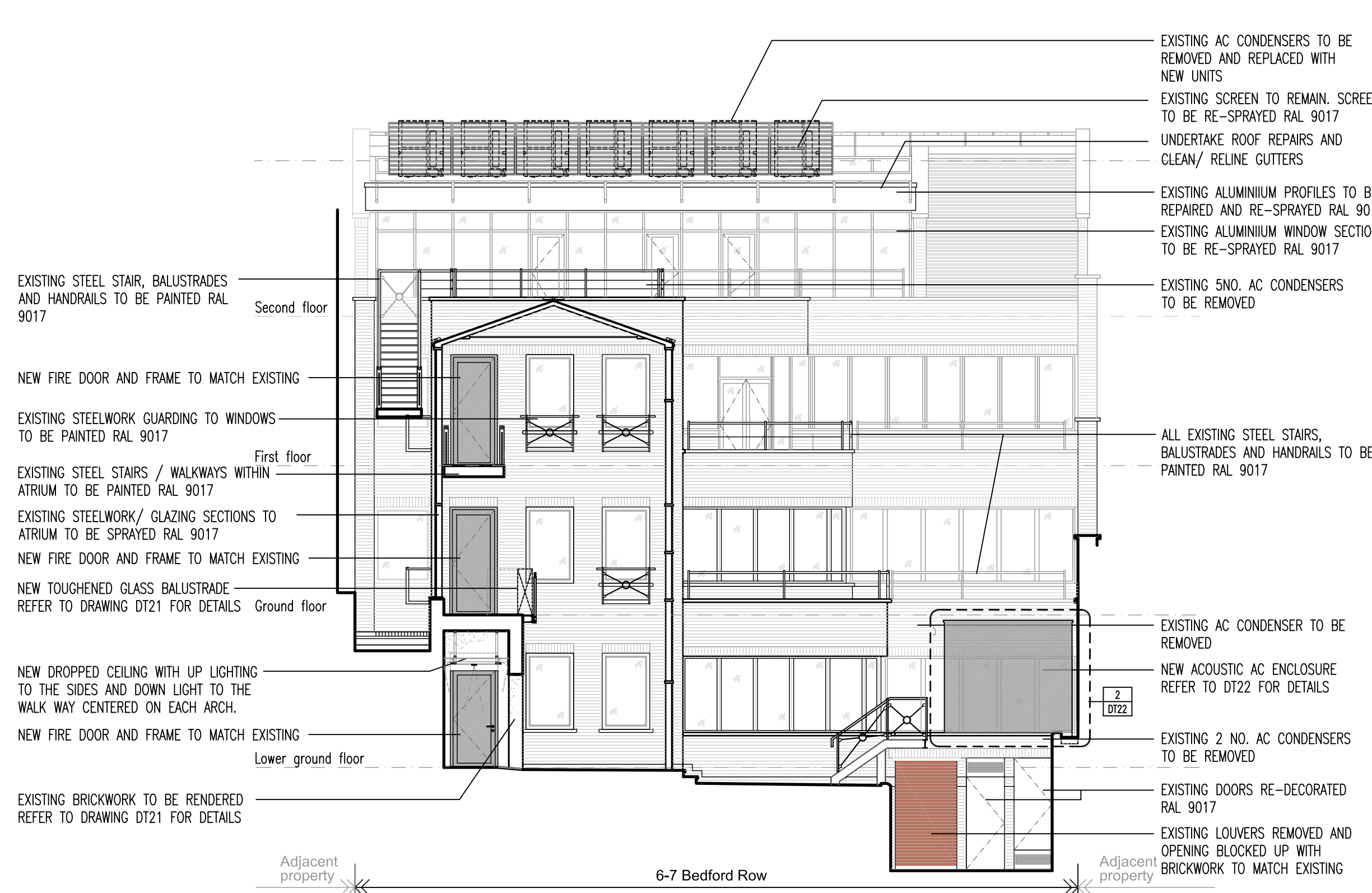
**1 Bedford Row - Elevation**  
Scale 1:100



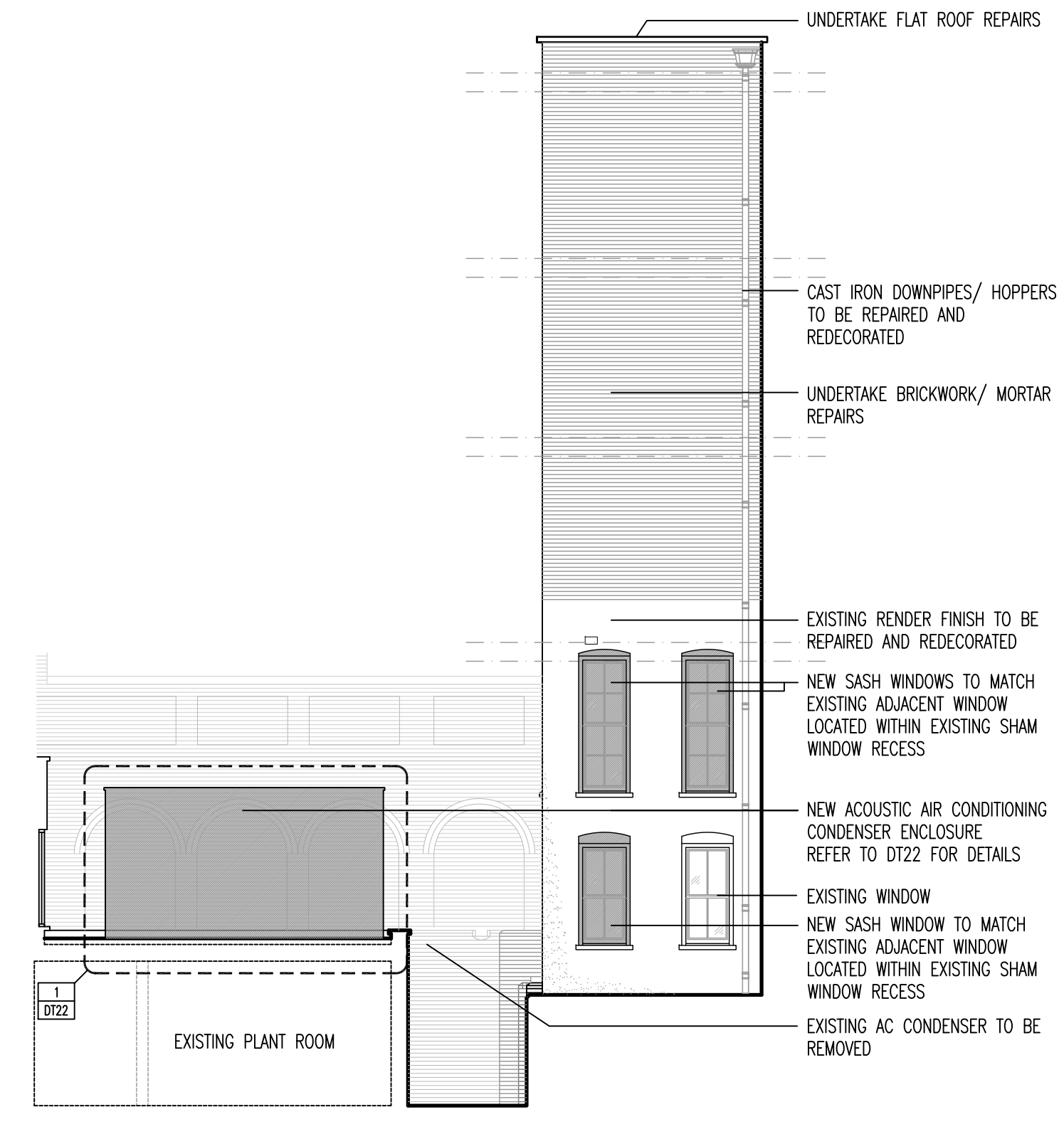
**2 Jockey Fields - Elevation**  
Scale 1:100



**3 Internal courtyard - Elevation**  
Scale 1:100



**4 Coutyard - Elevation**  
Scale 1:100



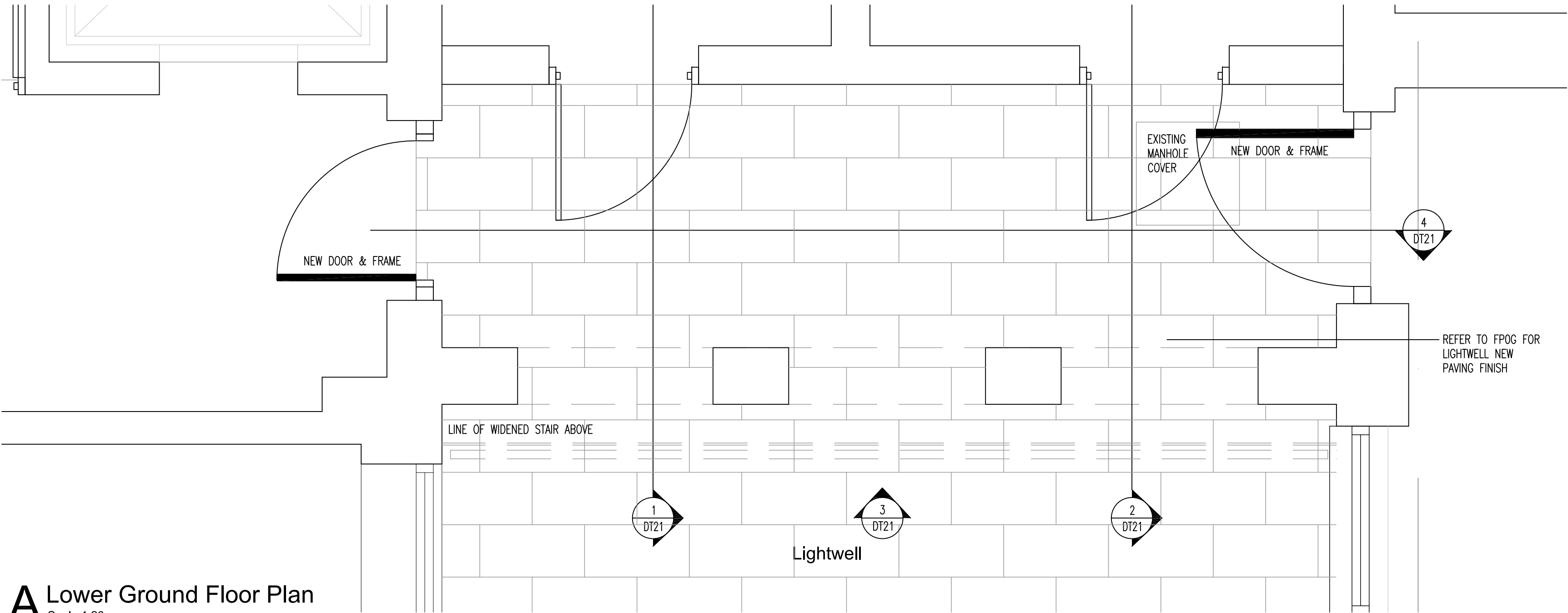
**5 Inner courtyard - Elevation**  
Scale 1:100

LC	Issued for Tender	11.10.18
Rev.	Drawn	Description
		Date

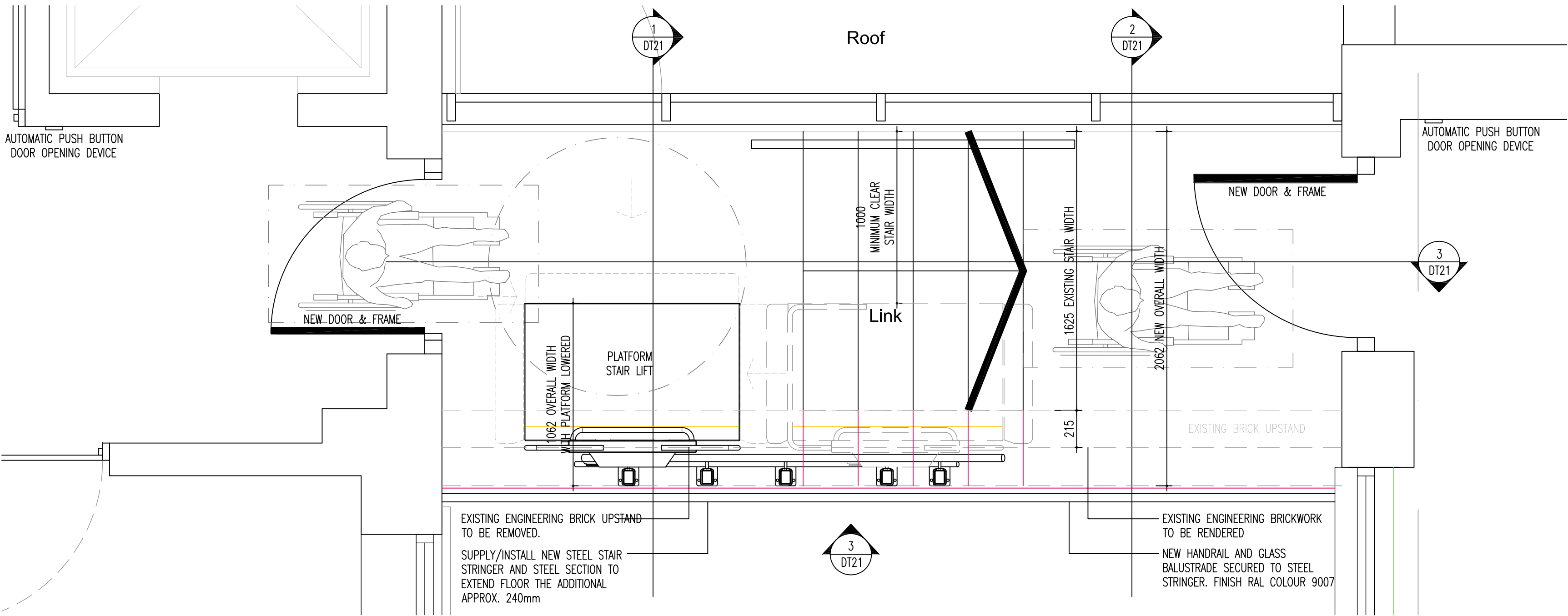


Client	Chambers 7BR		
Project	7 Bedford Row, London WC1R 4BS		
Drawing	Proposed External Building Elevations		
Drawing Status	PRELIMINARY		
Scale	1:20/50@A1	Cad file	-2332 DT20
Drawn by	AW	Project no.	172332
Checked by	LC	Drawing no.	DT20
Date	OCT 2018	Revision	

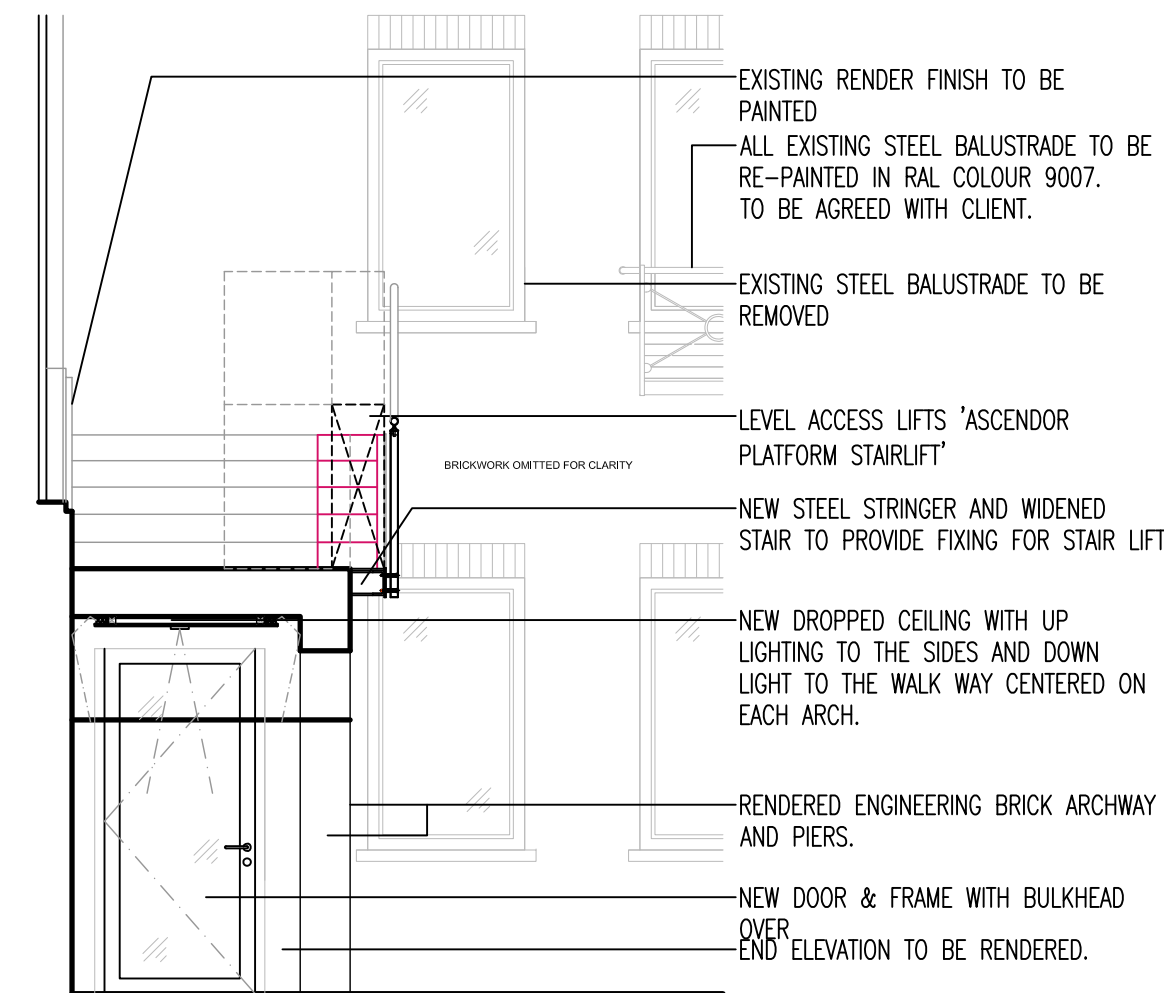




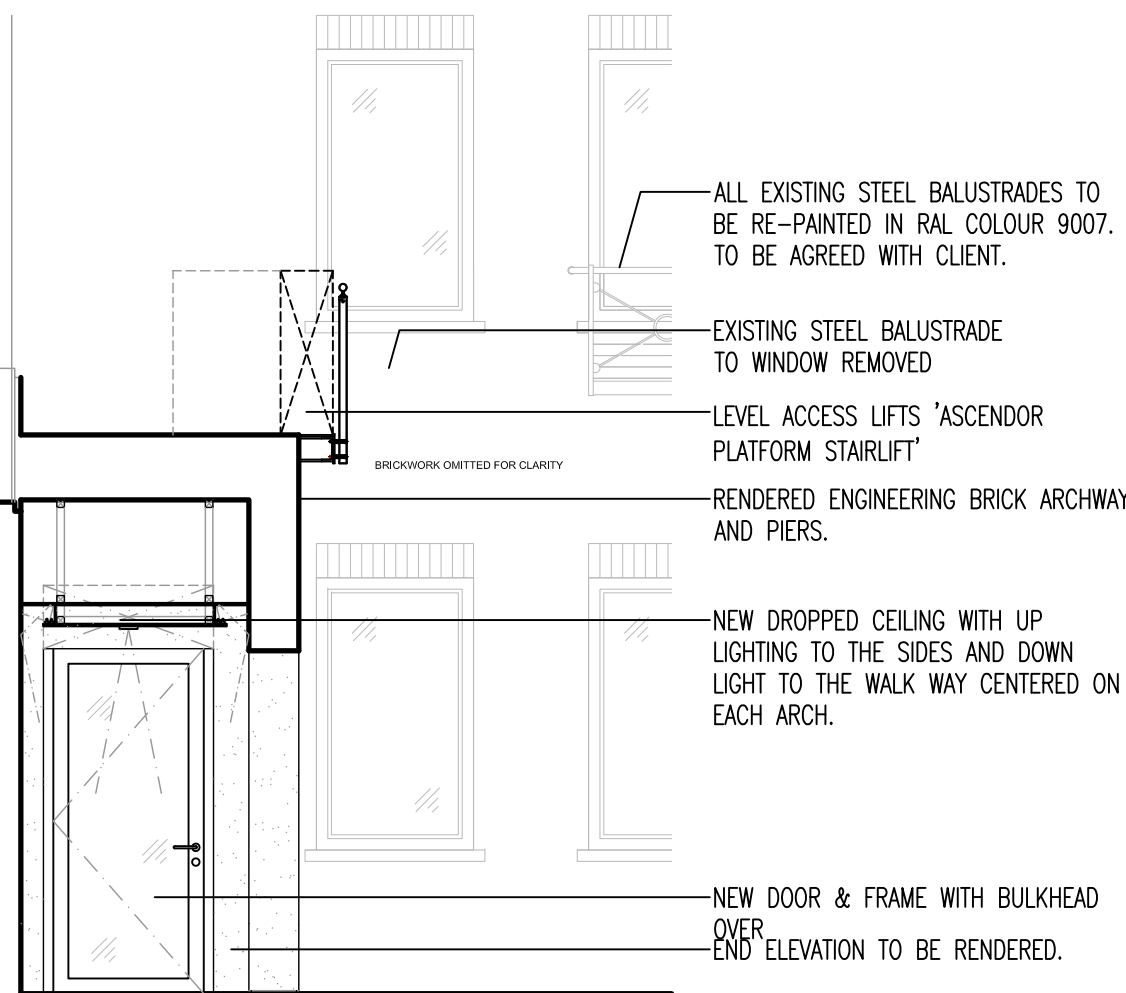
**A Lower Ground Floor Plan**  
Scale 1:20



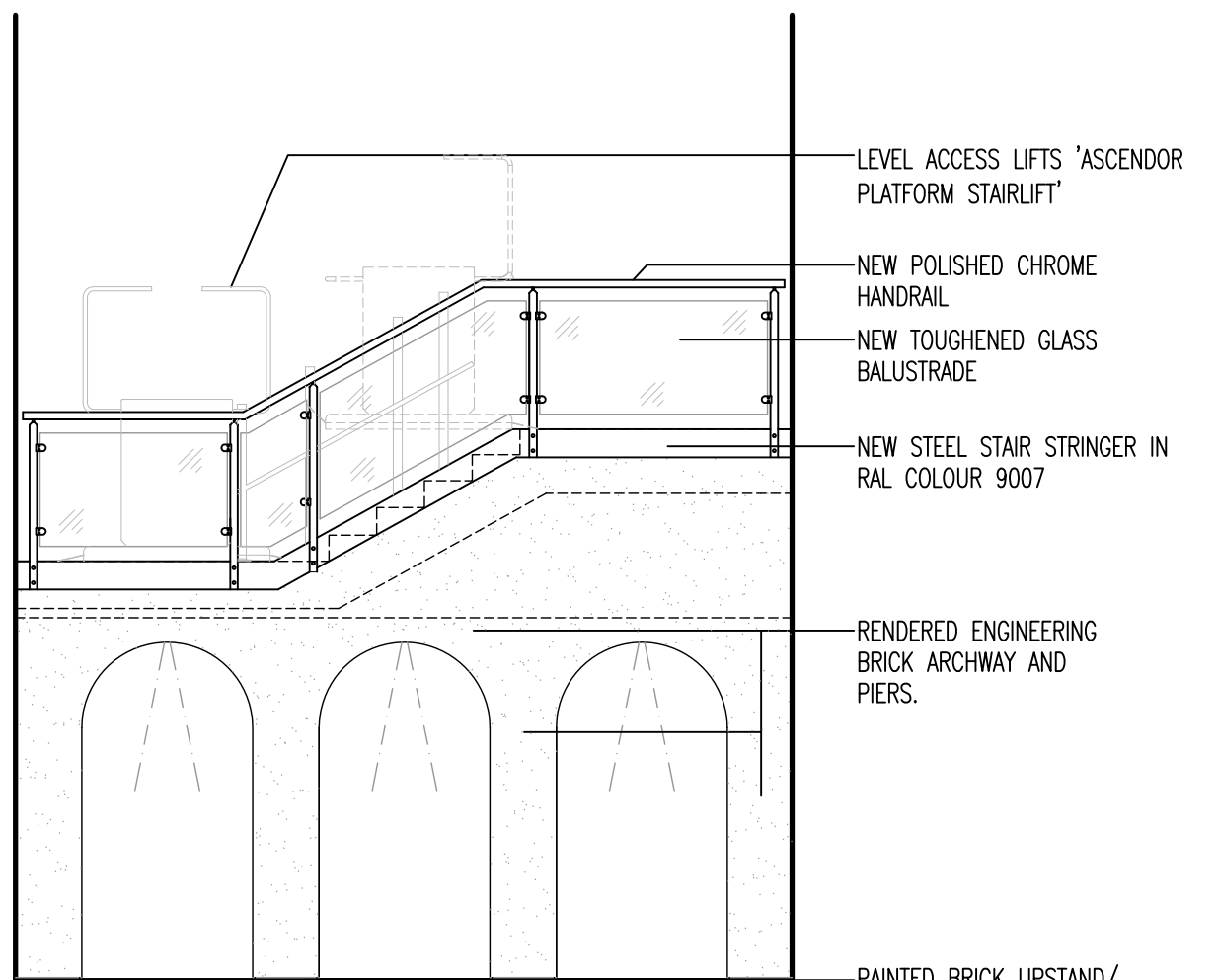
**B Ground Floor - Lightwell stair plan**  
Scale 1:20



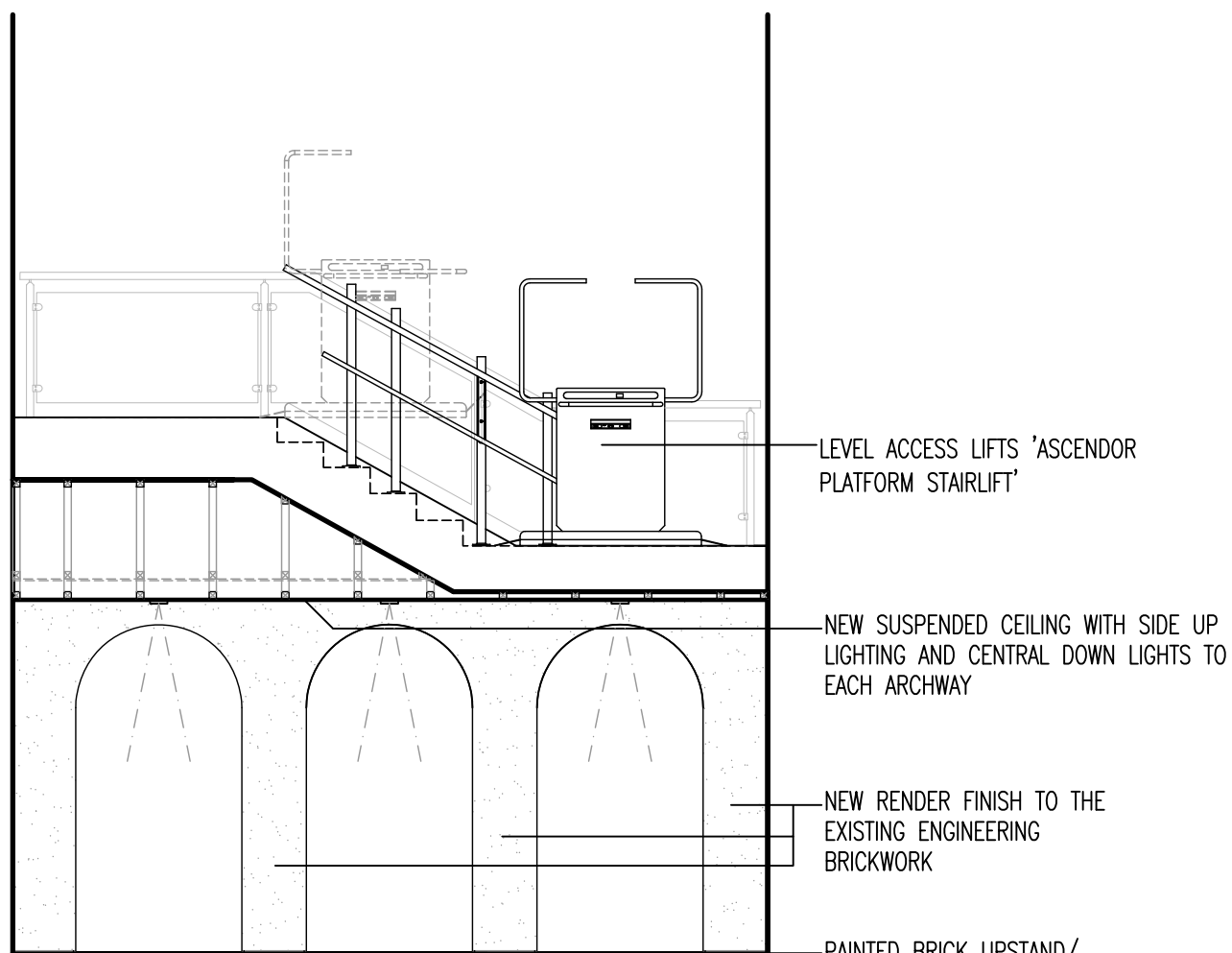
**1 Section 1**  
Scale 1:50



**2 Section 2**  
Scale 1:50



**3 Elevation**  
Scale 1:50



**4 Section 3**  
Scale 1:50

#### SPECIFICATION:

PROVIDE LINK BETWEEN STAIR LIFT AND AUTOMATIC POWER ASSISTED DOORS WITH PUSH TO OPEN BUTTONS TO EACH DOOR AT EITHER END OF LIGHTWELL.

PROVIDE LINK BETWEEN STAIR LIFT AND FIRE ALARM SYSTEM SO THAT THE STAIR LIFT FAILS SAFE/ CLOSED POSITION IN THE EVENT OF AN EMERGENCY. (BATTERY BACK UP).

PROVIDE LINK BETWEEN POWER ASSISTED DOORS/ PUSH BUTTON TO OPEN DEVICES SO THAT THE DOORS FAIL SAFE/ CLOSED IN THE EVENT OF AN EMERGENCY.

STAIR LIFT OPERATION/ MECHANISM TO OPERATE AS FOLLOWS:

APPROACH FROM GROUND FLOOR BEDFORD ROAD.

1. PUSH BUTTON DEVICE OPENS DOORS AND SENDS SIGNAL TO LOWER STAIR LIFT PLATFORM.
2. USER ENTERS ONTO PLATFORM LIFT AND USES CONTROLS TO OPERATE THE LIFTING DEVICE.
3. UPON ARRIVING AT THE TOP OF THE STAIR LIFT, THE DOOR AUTOMATICALLY OPENS.

THUS ALLOWING EASY ACCESS ON/ OFF THE STAIR LIFT WITH DOORS AUTOMATICALLY OPEN/ CLOSE TO ASSIST USER AND NOT IMPEACHING WHEELCHAIR MOVEMENT SPACE.

APPROACH FROM GROUND FLOOR JOCKEY FIELDS ROAD.

1. PUSH BUTTON DEVICE SENDS SIGNAL TO CALL THE STAIR LIFT TO THE TOP OF THE STAIR AND THEN THE DOOR AUTOMATICALLY OPENS.
2. USER ENTERS ONTO PLATFORM LIFT AND USES CONTROLS TO OPERATE THE LIFTING DEVICE.
3. UPON ARRIVING AT THE BOTTOM OF THE STAIR LIFT, THE DOOR AUTOMATICALLY OPENS.

THUS ALLOWING EASY ACCESS ON/ OFF THE STAIR LIFT WITH DOORS AUTOMATICALLY OPEN/ CLOSE TO ASSIST USER AND NOT IMPEACHING WHEELCHAIR MOVEMENT SPACE.

IN THE EVENT OF AN EMERGENCY:

THE LIGHTWELL STAIR IS A FIRE ESCAPE ROUTE AND THEREFORE REQUIRES 1.2m MINIMUM CLEAR WIDTH TO ESCAPE. THEREFORE, THE STAIR LIFT SHOULD FAIL SAFE (CLOSED) IN THE EVENT OF AN EMERGENCY. I.E. THE STAIR LIFT SHOULD GO BACK TO ITS STARTING POSITION AND THE PLATFORM SHOULD CLOSE.

AUTOMATIC POWER ASSISTED OPENING DOORS SHOULD BE ABLE TO OPEN/ CLOSE AS NORMAL DOORS.

A	LC	Issued for Tender.	11.10.18
-	LC	Preliminary Issue.	04.10.18

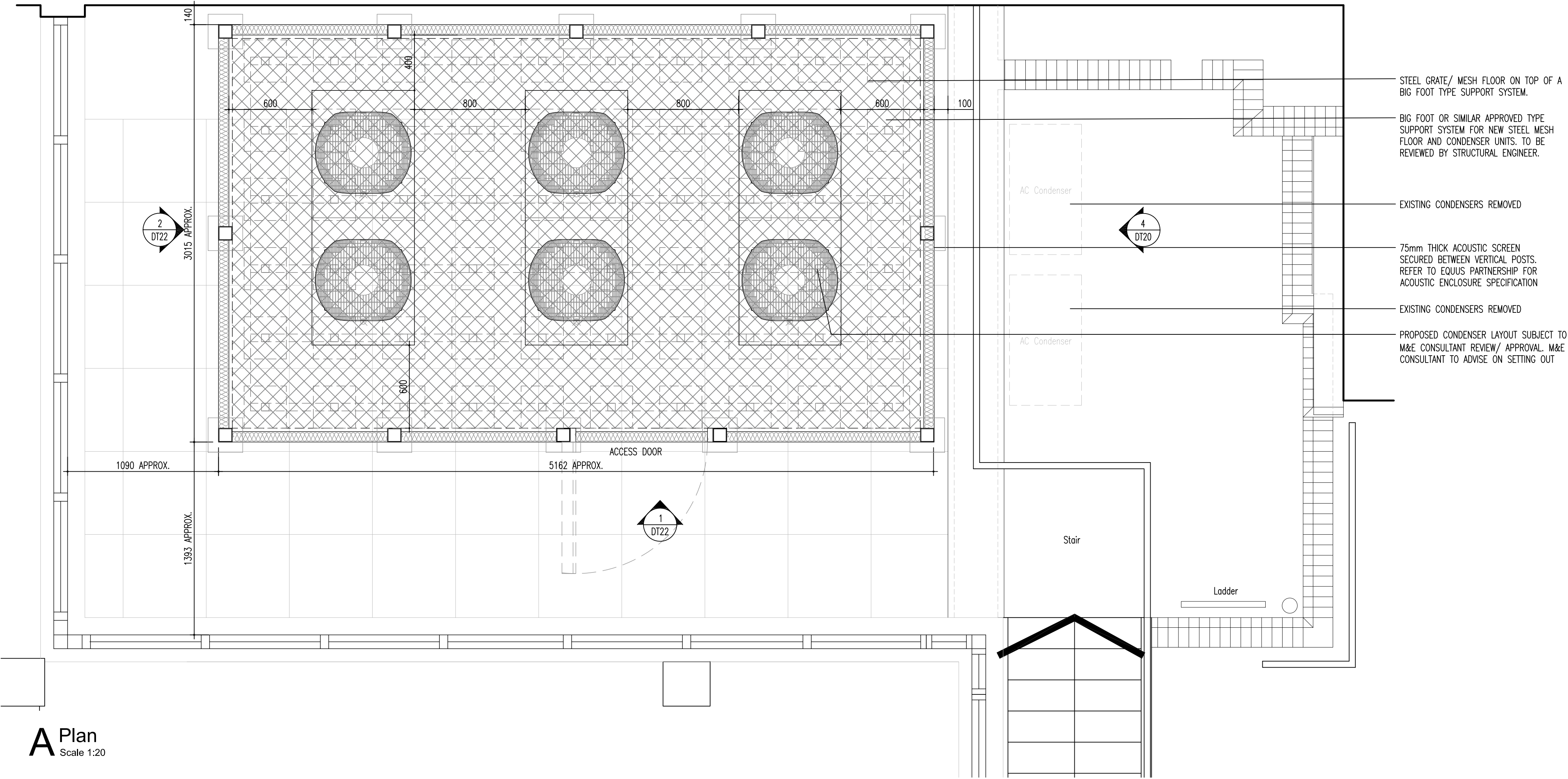
Rev.	Drawn	Description	Date
------	-------	-------------	------



Client	Chambers 7BR
Project	7 Bedford Row, London WC1R 4BS
Drawing	Proposed Stair Lift Ground Floor - Lightwell

Drawing Status	TENDER		
Scale	1:20/50@A1	Cad file	-2332 DT21
Drawn by	LC	Project no.	172332
Checked by	JM	Drawing no.	DT21
Date	SEPT 2018	Revision	A





**A Plan**

Scale 1:20

STEEL GRATE/ MESH FLOOR ON TOP OF A BIG FOOT TYPE SUPPORT SYSTEM.

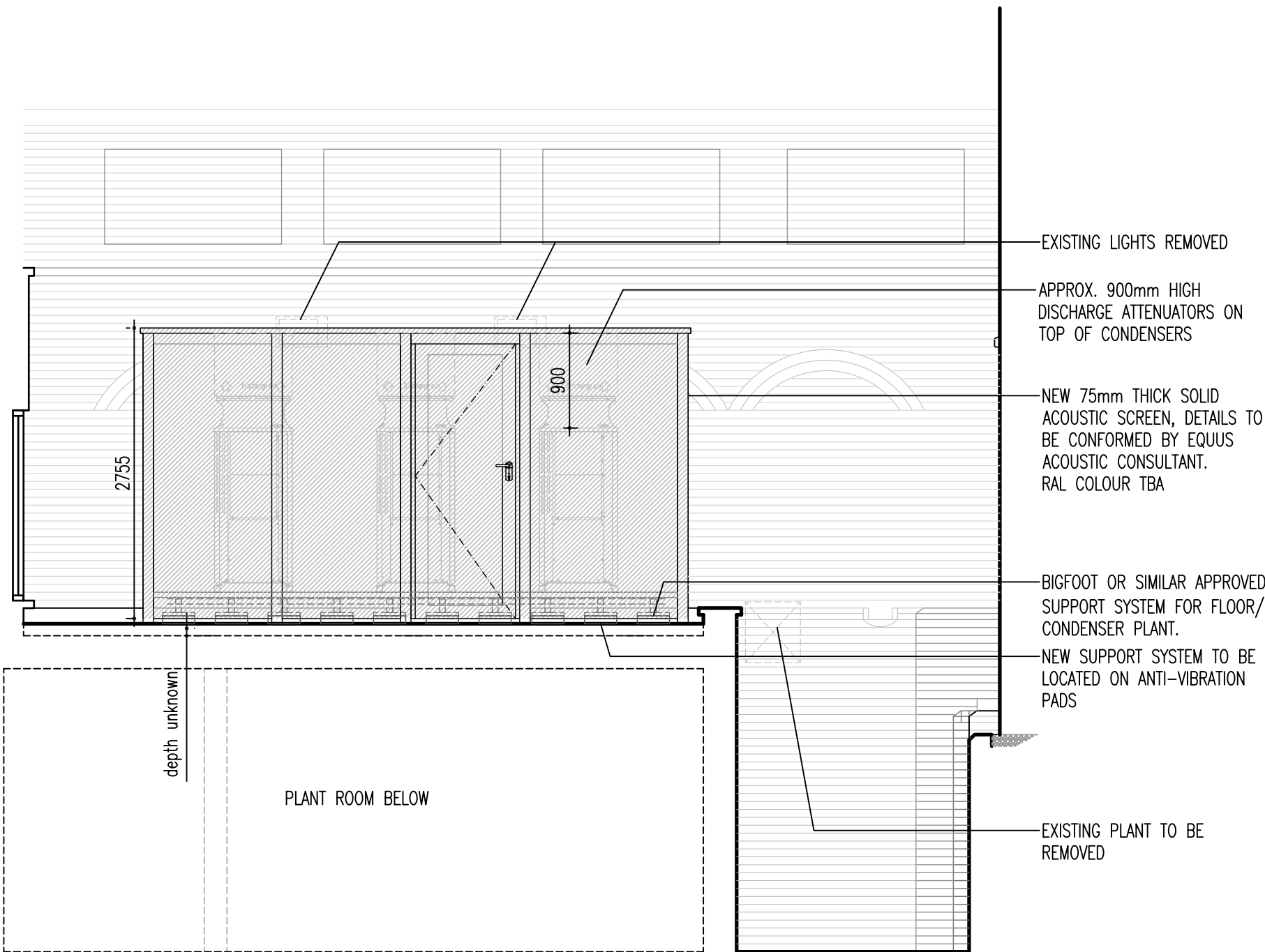
BIG FOOT OR SIMILAR APPROVED TYPE SUPPORT SYSTEM FOR NEW STEEL MESH FLOOR AND CONDENSER UNITS. TO BE REVIEWED BY STRUCTURAL ENGINEER.

EXISTING CONDENSERS REMOVED

75mm THICK ACOUSTIC SCREEN SECURED BETWEEN VERTICAL POSTS. REFER TO EQUUS PARTNERSHIP FOR ACOUSTIC ENCLOSURE SPECIFICATION

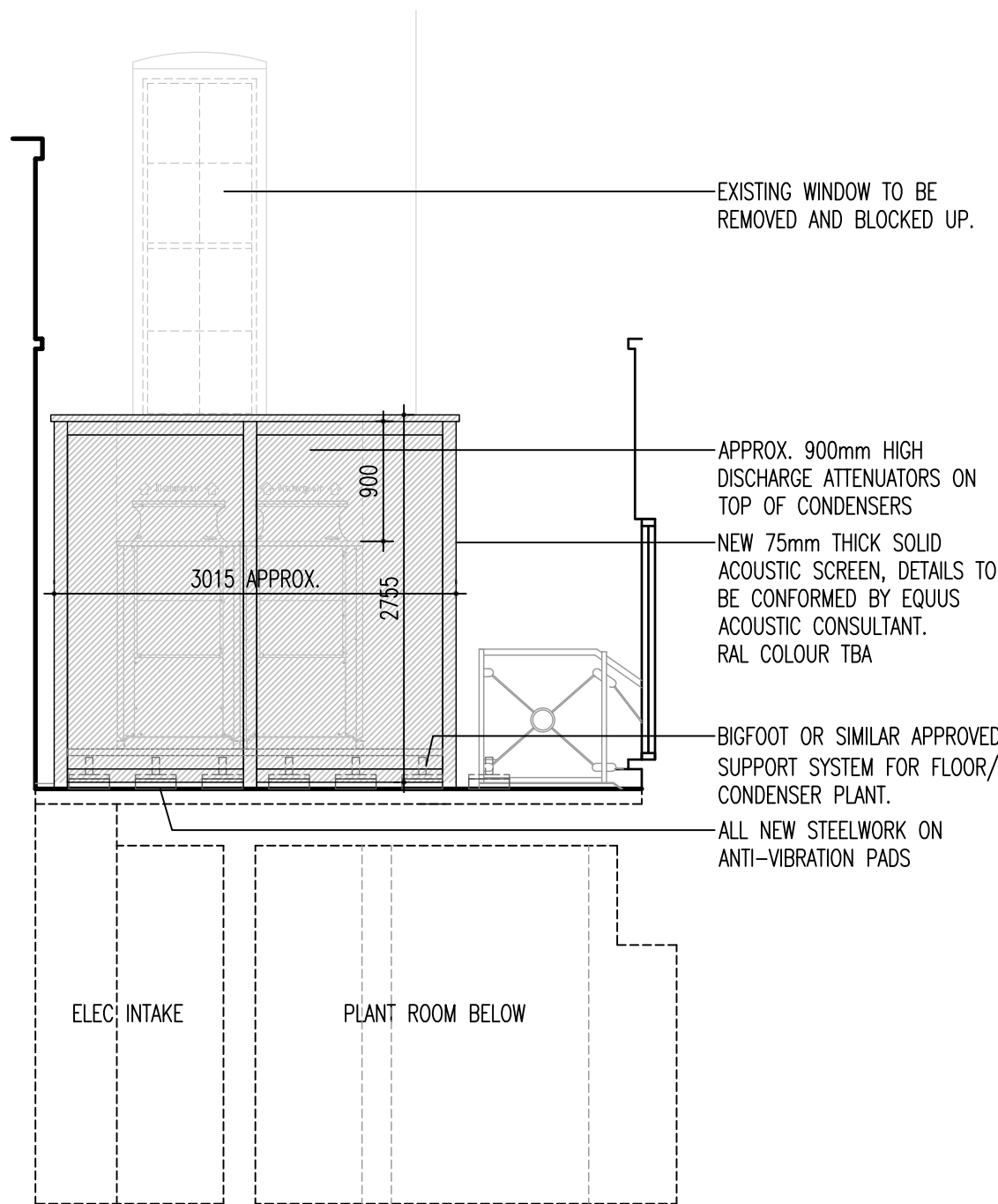
EXISTING CONDENSERS REMOVED

PROPOSED CONDENSER LAYOUT SUBJECT TO M&E CONSULTANT REVIEW/ APPROVAL. M&E CONSULTANT TO ADVISE ON SETTING OUT



**1 Proposed Elevation**

Scale 1:50



**2 Proposed Section/ Elevation**

Scale 1:50

B	LC	Drawing revised following confirmation of acoustic plant data. Issued for information and comment.	08.10.18
A	LC	Drawing revised following coordination meeting with acoustic consultant.	01.10.18
-	LC	Preliminary issue.	24.09.18

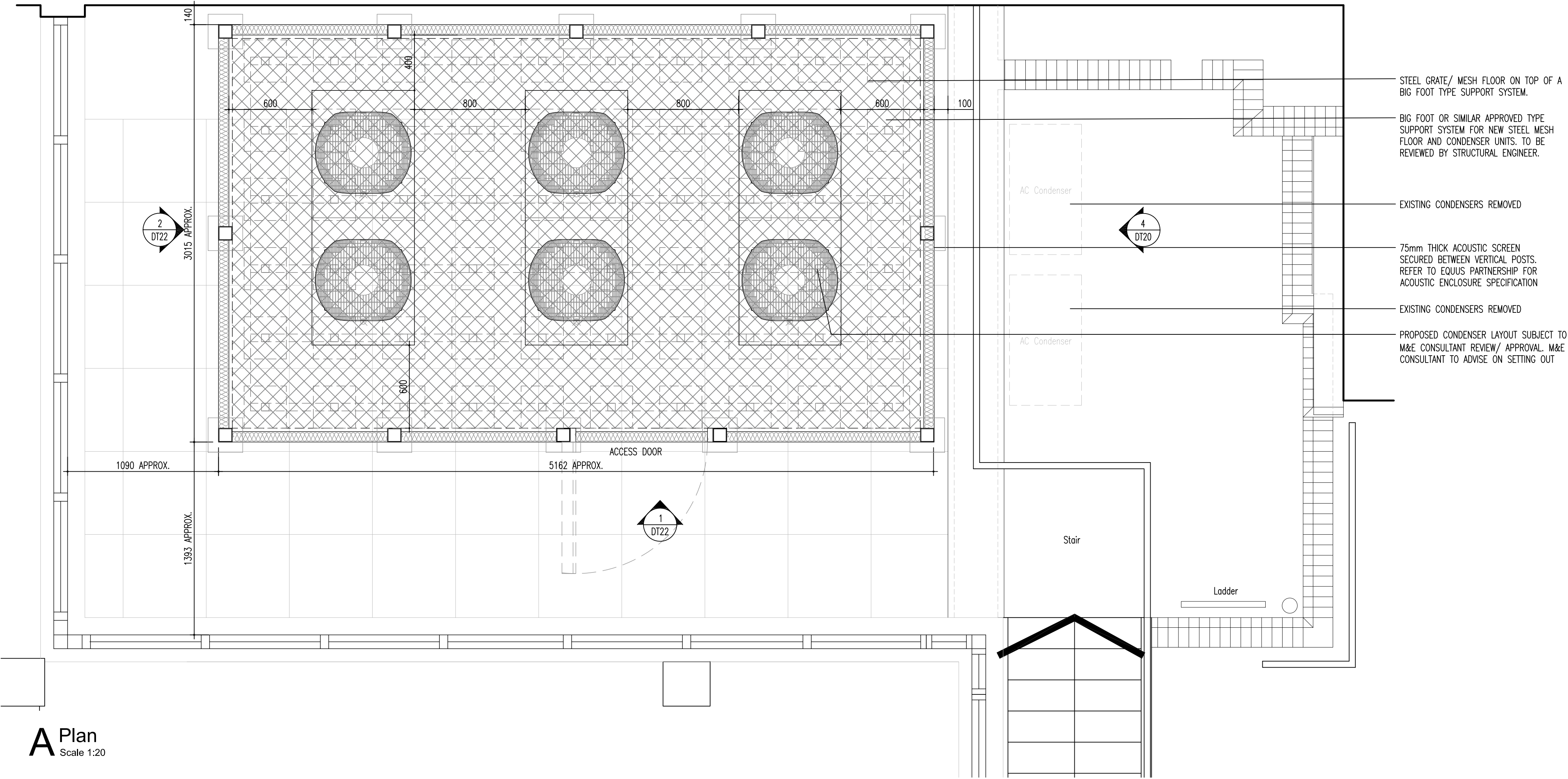
Rev | Drawn | Description | Date



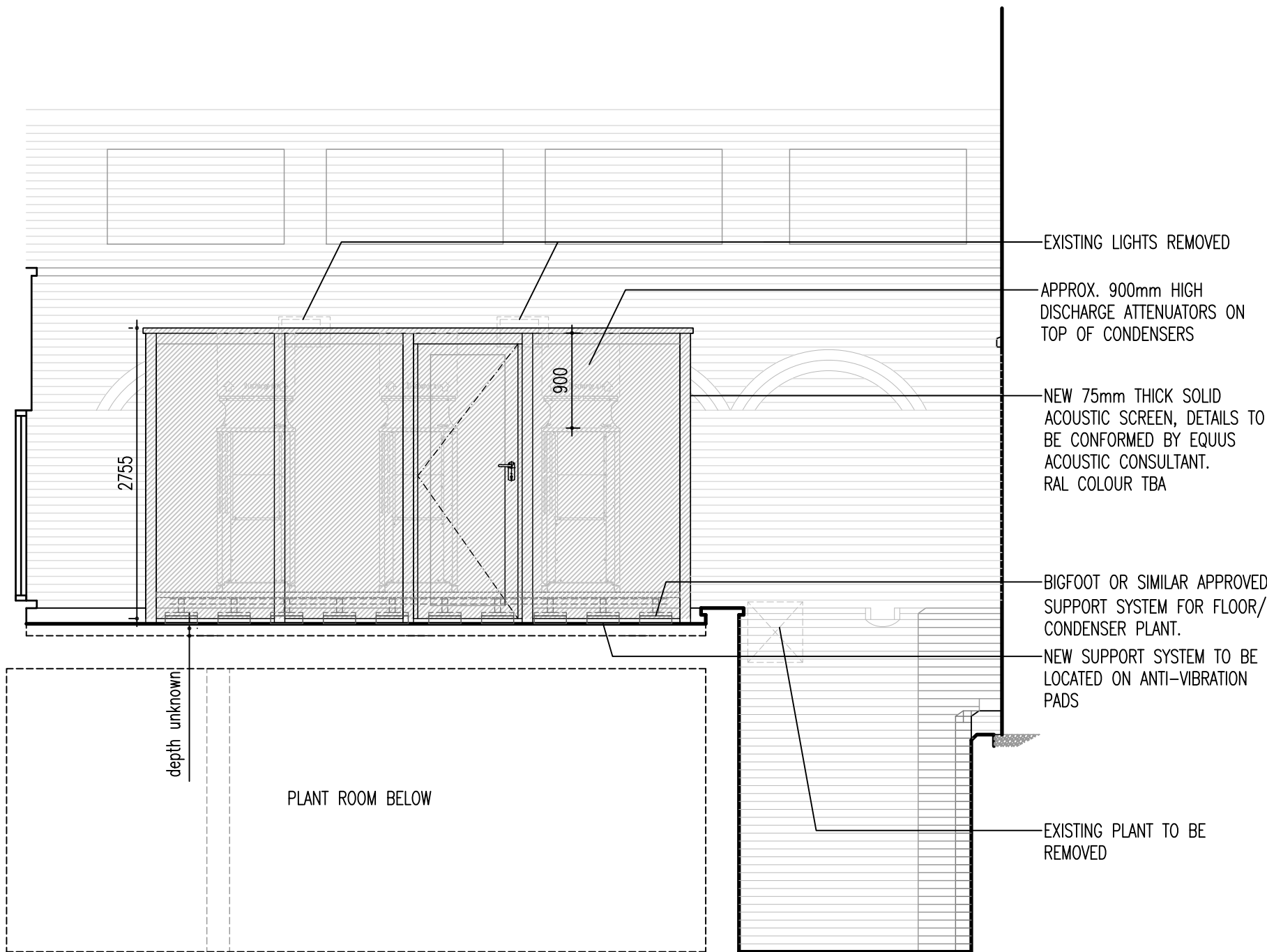
Client	Chambers 7BR
Project	7 Bedford Row, London WC1R 4BS
Drawing	Proposed A/C Plant Enclosure Plan & Elevations

Drawing Status	PRELIMINARY		
Scale	1:20/50@A1	Cad file	-2332 DT22
Drawn by	LC	Project no.	172332
Checked by	JM	Drawing no.	DT22
Date	SEPT 2018	Revision	B

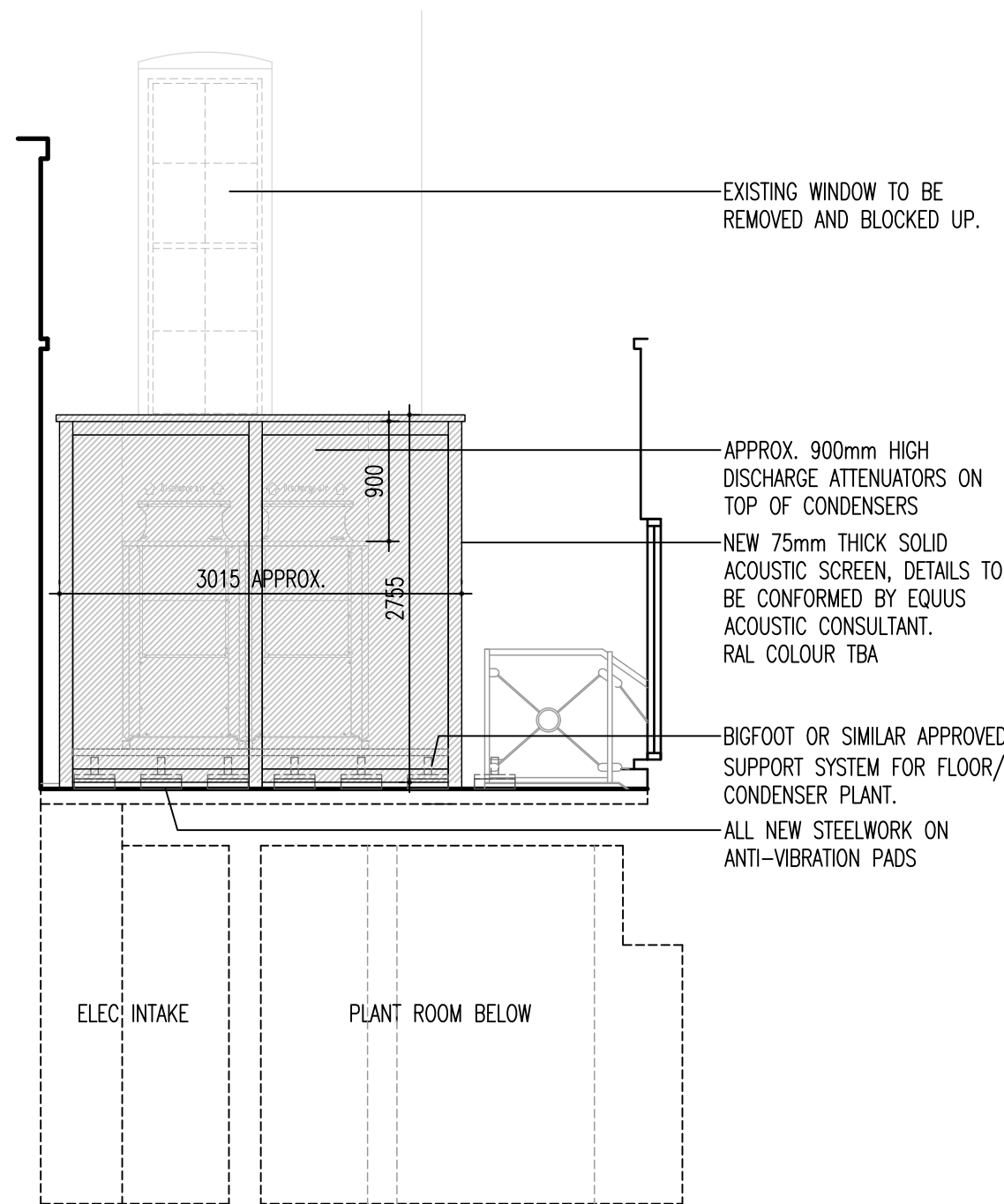




**A Plan**  
Scale 1:20



**1 Proposed Elevation**  
Scale 1:50



**2 Proposed Section/ Elevation**  
Scale 1:50

C	LC	Issued for Tender.	11.10.18
B	LC	Drawing revised following confirmation of acoustic/ plant data.	08.10.18
A	LC	Drawing revised following confirmation of acoustic/ plant data.	01.10.18
-	LC	Issued for information and comment.	
-	LC	Drawing revised following coordination meeting with acoustic consultant.	24.09.18
-	LC	Preliminary issue.	



Client	Chambers 7BR
Project	7 Bedford Row, London WC1R 4BS
Drawing	Proposed A/C Plant Enclosure Plan & Elevations

Drawing Status	PRELIMINARY		
Scale	1:20/50@A1	Cad file	-2332 DT22
Drawn by	LC	Project no.	172332
Checked by	JM	Drawing no.	DT22
Date	SEPT 2018	Revision	C