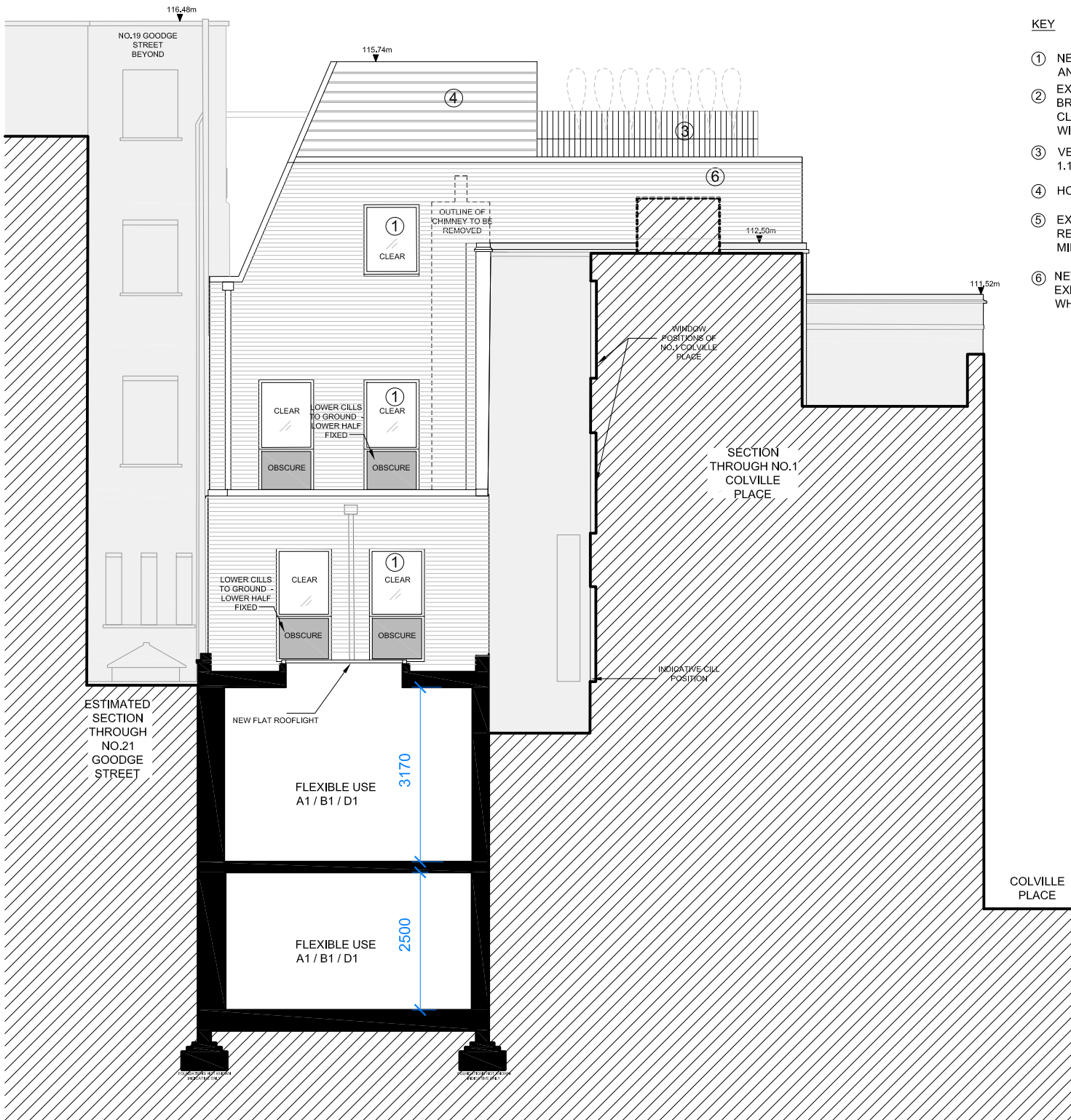


ELEVATION 2 - COLVILLE PLACE



ELEVATION 3 - REAR OF BUILDING

KEY

- ① NEW DOUBLE-GLAZED WINDOWS WITH DARK ANODIZED METAL FRAMES
- ② EXISTING RENDER REMOVED TO REVEAL BRICKWORK UNDERNEATH. BRICKWORK TO BE CLEANED, REPAIRED, RE-POINTED AND TREATED WITH DILUTED WHITE MINERAL PAINT
- ③ VERTICAL METAL RAILINGS AT 100MM CENTRES, 1.1M HIGH FROM FFL
- ④ HORIZONTAL ZINC CLADDING
- ⑤ EXISTING BRICK RETAINED, CLEANED, REPAIRED, RE-POINTED AND TREATED WITH DILUTED WHITE MINERAL PAINT
- ⑥ NEW YELLOW LONDON STOCK TO MATCH EXISTING POINTED AND TREATED WITH DILUTED WHITE MINERAL PAINT.



REVISIONS		REVISIONS		KEY PLAN		SCALE BAR (METRES)		stagg architects		3rd FLOOR, 44-46 NEW INN YARD, LONDON EC2A 3EY ben@staggarchitects.co.uk www.staggarchitects.co.uk		DRAWING TITLE PROPOSED ELEVATIONS 2 AND 3									
C	11.08.16	BALUSTRADE AMENDED TO SHOW VERTICAL RAILING	M	12.07.17	MINOR MATERIAL AMENDMENT APPLICATION	1:100@A3 / 1:50@A1		NOTES AND CLARIFICATIONS PLEASE READ DRAWING IN ACCORDANCE WITH CROSS-REFERENCED SPECIFICATION / SCOPE OF WORKS. ©STAGG ARCHITECTS LIMITED, NO IMPLIED LICENCE EXISTS. THIS DRAWING SHOULD NOT BE USED TO CALCULATE AREAS FOR THE PURPOSES OF VALUATION. SUBJECT TO PLANNING PERMISSION, BUILDING REGULATIONS, STATUTORY UNDERTAKER SEARCHES AND DESIGN DEVELOPMENT. DO NOT SCALE DRAWINGS, DIMENSIONS GOVERN. ALL DIMENSIONS TO BE VERIFIED ON SITE BY CONTRACTOR BEFORE PROCEEDING. ARCHITECT SHALL BE NOTIFIED IN WRITING OF ANY DISCREPANCIES.		CLIENT 27 - 29 WHITFIELD PROPERTY LTD		PROJECT 27 - 29 WHITFIELD STREET LONDON W1T 2SE		DATE 27.02.17		DRAWN MN		A1 SCALE 1:50		A3 SCALE 1:100	
D	31.08.16	SLOPED ROOF DETAIL ADDED	N	14.02.18	RENDER REMOVED THROUGHOUT AND ROOFTOP EXTENSION AMENDED TO BRICKWORK.	0 1 2 3 4 5								STATUS PLANNING		DRAWING NO 51517-P-61		REV P			
E	21.09.16	DRAFT PLANNING	O	13.03.18	SHADOW GAP ADDED TO BRICKWORK.																
F	01.11.16	PLANNING	P	09.10.18	JULIETTE BALCONY ON THIRD FLOOR CHANGED TO INTERNAL RAILING																
G	16.12.16	PLANTERS ADDED TO ENABLE SCREENING. DESIGN OF REAR RAILINGS AMENDED.																			
H	21.12.16	SECTION ADJUSTED TO CUT THROUGH 1 COLVILLE PL.																			
I	27.01.17	PERIMETER RAILING TO 1ST AND 2ND FLOOR REMOVED																			
J	03.03.17	PLANT SET BACK FURTHER 200mm & REDUCED IN HEIGHT BY 100mm																			
K	08.03.17	PLANT LOWERED 500mm & ACCESS STAIR AMENDED, PARTS OF REAR WINDOWS OBSCURE GLASS,																			
L	20.03.17	JULIETTE BALCONIES REMOVED FROM REAR WINDOWS PLANT MATERIAL AMENDED TO ZINC.																			