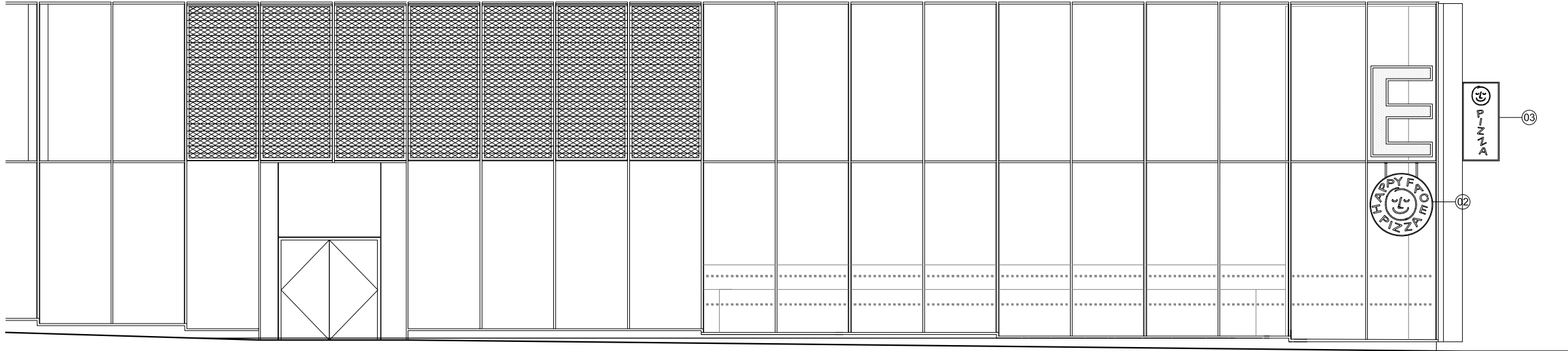
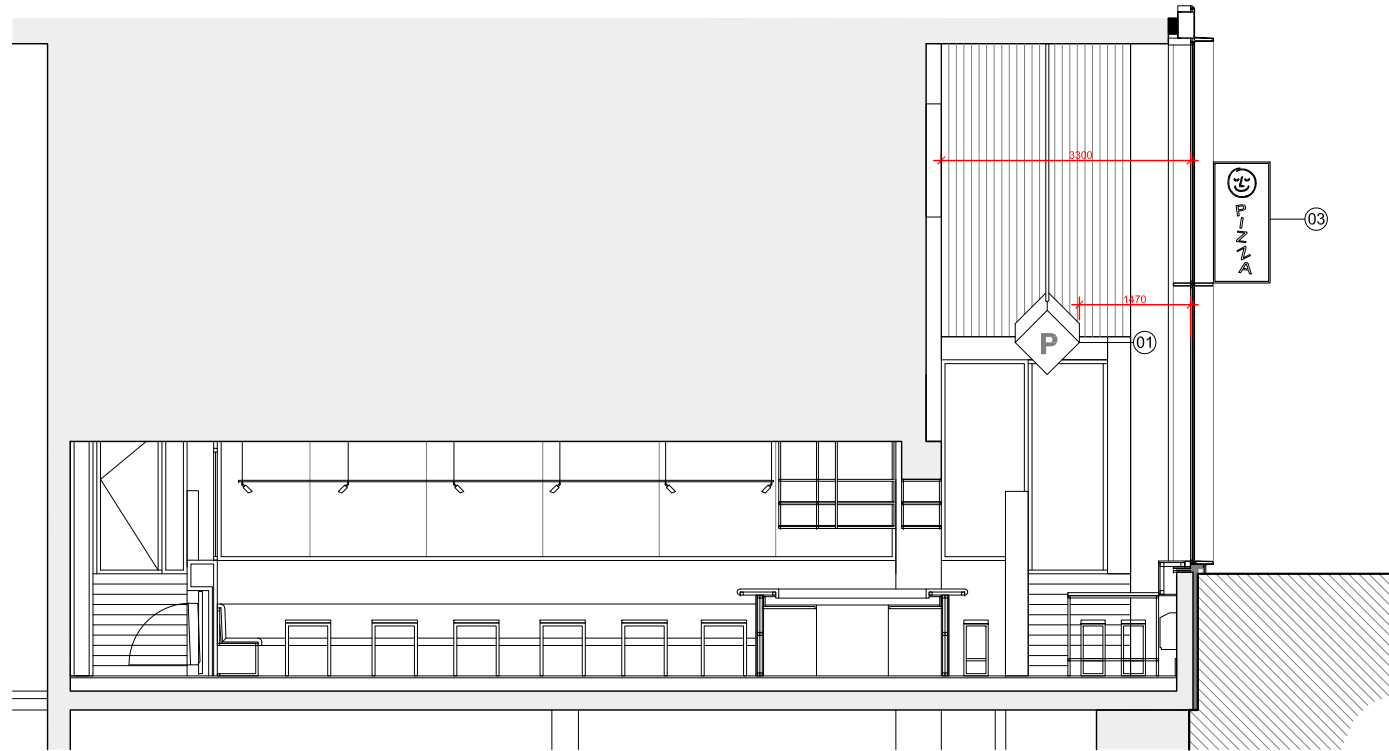


01 Happy Face Signage External West Elevation
 A5505 Scale 1:50 @ A1/ 1:100 @ A3



02 Happy Face Signage Internal Section B
 A5505 Scale 1:50 @ A1/ 1:100 @ A3



LEGEND

- | | | |
|--|--|--|
| 1. Perspex lampshade with LED neon element | 7. Steel Tubing Fixed to Existing Soffit | 14. Planting pots with high level planting / screening |
| 2. LED Neon and Lightbox Sign | 8. Neon Tubing | 15. Free standing menu / signage board |
| 3. Backlit LED Blade Sign | 9. Power Source | |
| 4. PPC steel frame- Colour TBC | 10. Perspex frame | |
| 5. Perspex sheet | 11. Existing Wall | |
| 6. LED panel lighting | 12. Existing Curtain | |
| | 13. Internal blade sign | |

SUBJECT TO SPECIALIST FABRICATOR DESIGN

notes

DMFK Architects Ltd take no responsibility for dimensions obtained by scaling from this drawing. If no dimension is shown the recipient must ascertain the dimension specifically from the architect or by site measurement and may not rely on the drawing. Supply of the drawing in digital form is solely for convenience and no reliance may be placed on any data in digital form. All data must be checked against hard copy. This drawing is issued for design intent only and should not be used for construction unless stated.

copyright
 This drawing is the property of dMFK Architects Ltd. No disclosure or copy of it may be made without the written permission of dMFK Architects Ltd.



DE METZ FORBES KNIGHT ARCHITECTS

the old library 119 chalmley gardens london nw6 1aa t 020 7435 1144 f 020 7435 0884 mail info@dmfk.co.uk

project Happy Face drawing title

client - scale at A1 1:50 project no. 2118

scale at A3 1:100 drawing no. A5505

drawn TPLS date MAR 18

revision

revision

B

PROPOSED DRAWINGS

OVERALL SIGNAGE ELEVATIONS

drawn TPLS date MAR 18

revision

revision

B

date rev revisions

date	rev	revisions
09.05.18	A	Logo diameter reduced and centered on space
18.10.18	B	Dimensions added