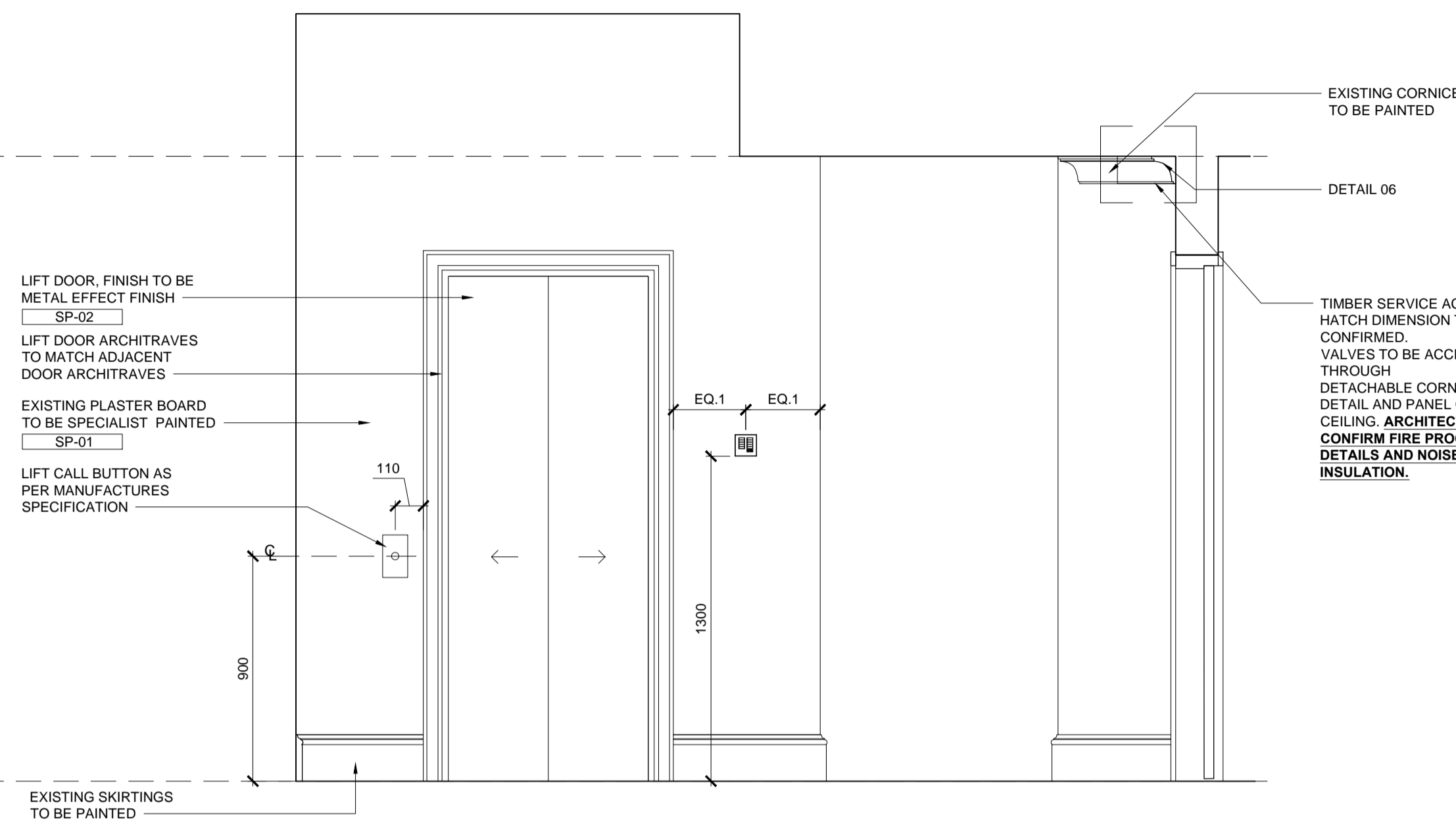
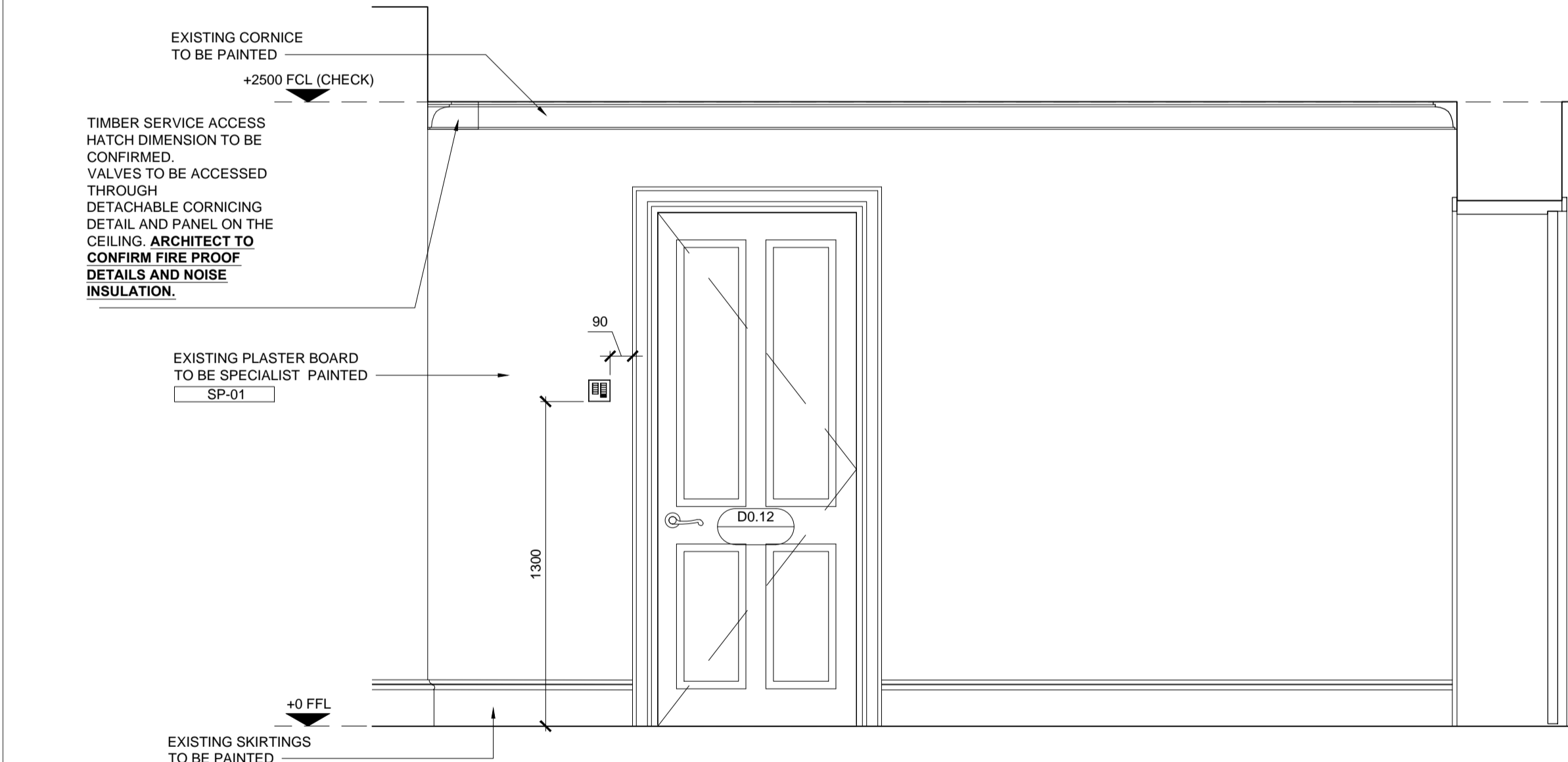


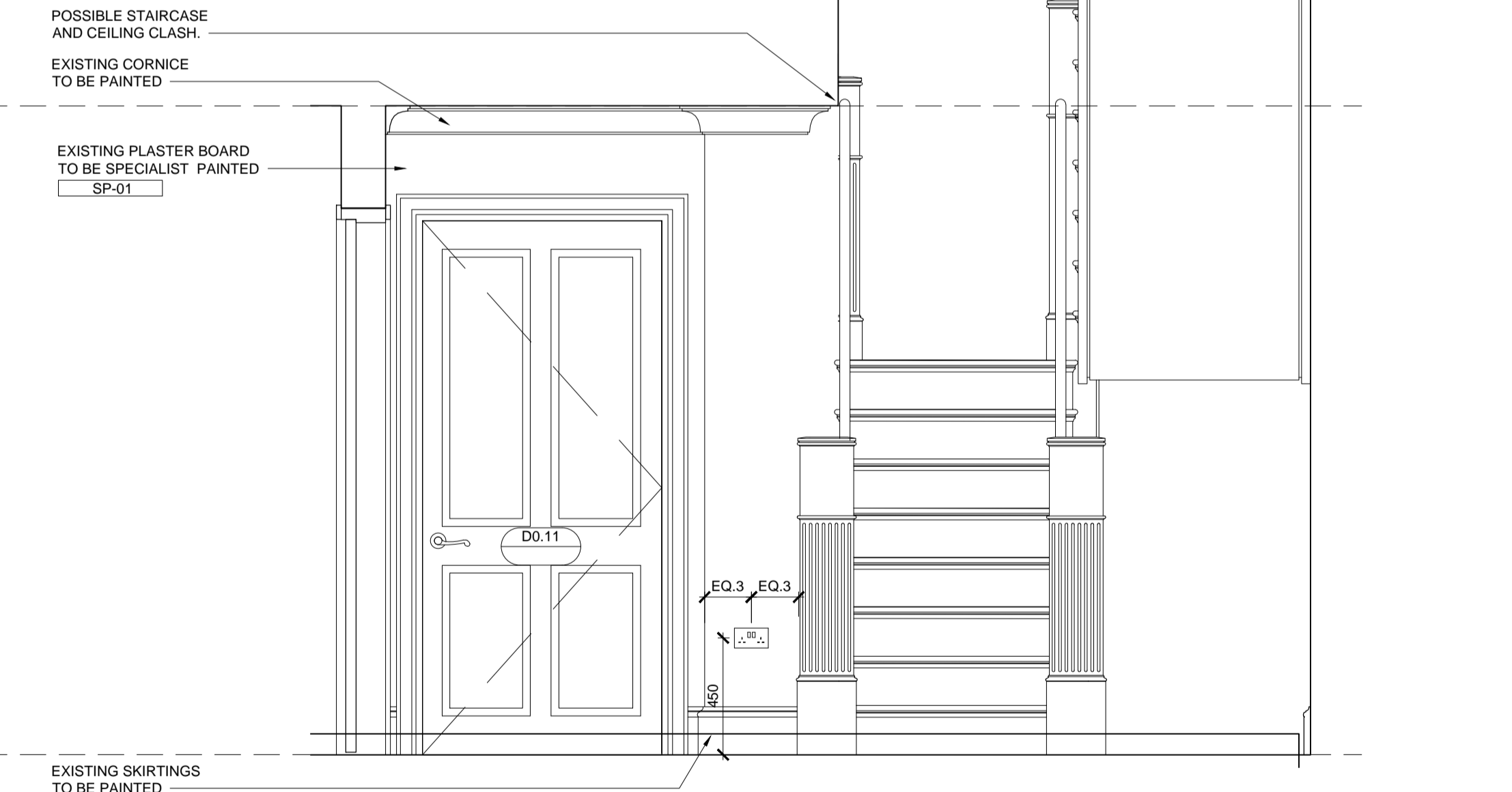
01 Elevation A  
Scale: 1:20



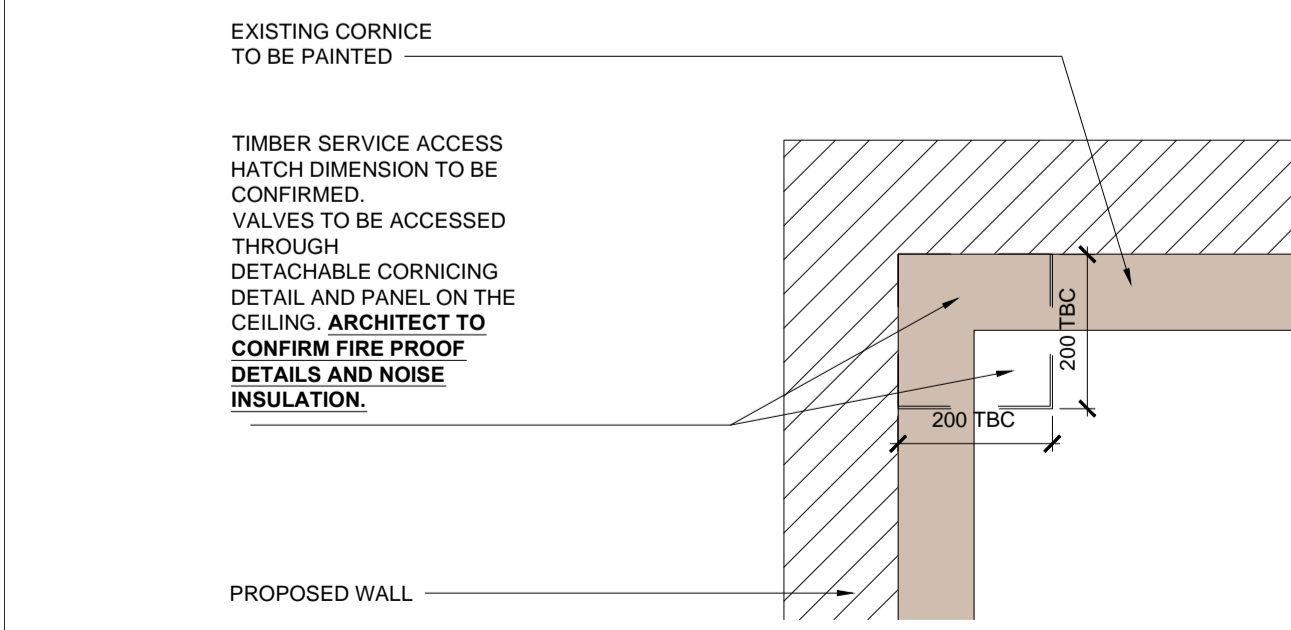
02 Elevation B  
Scale: 1:20



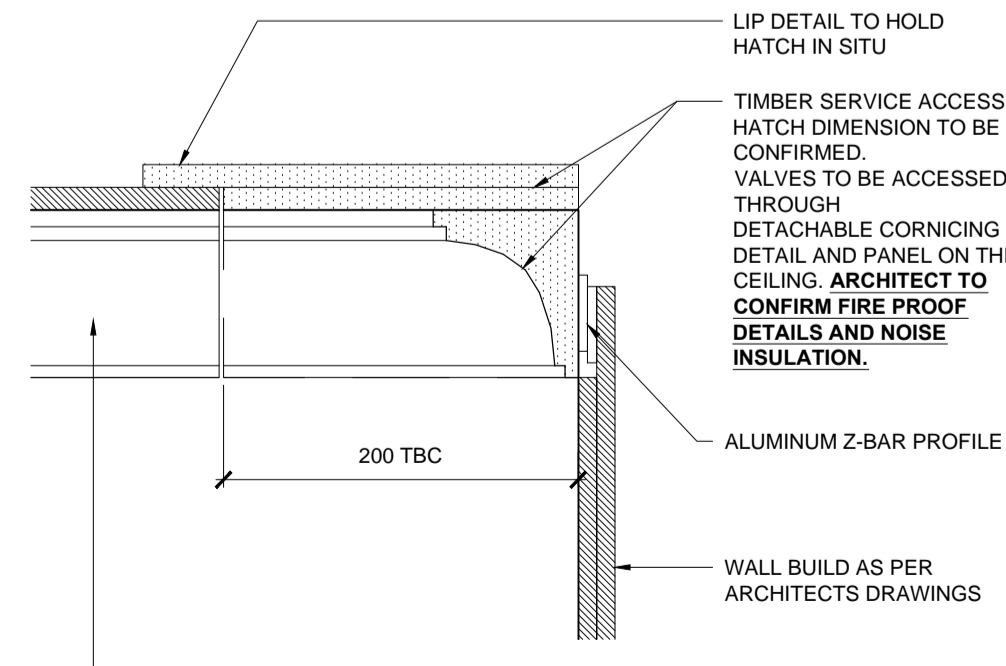
03 Elevation C  
Scale: 1:20



04 Elevation D  
Scale: 1:20



05 Access hatch ceiling detail  
Scale: 1:10



06 Access hatch section detail  
Scale: 1:5

Notes

1. THE DRAWING SHOWS DESIGN INTENT ONLY. ALL DIMENSIONS TO BE CHECKED ON SITE PRIOR TO CONSTRUCTION OR PRODUCTION. ANY DISCREPANCIES TO BE NOTIFIED TO THE DESIGN TEAM FOR APPROVAL.
2. ALL CONTRACTOR DESIGN DETAILS ARE TO BE SUBMITTED BY THE CONTRACTOR AS SHOP DRAWINGS THAT REFLECT ON ONSITE CONDITIONS. TO THE DESIGNER FOR APPROVAL AND COMMENT PRIOR TO MANUFACTURE.
3. DO NOT SCALE FROM THE DRAWING FOR ANY PURPOSE. ALL DIMENSIONS TO BE CHECKED ON SITE FOR RELIANCE.
4. ALL DISCREPANCIES AND OMISSIONS ON SITE MUST BE REPORTED TO DESIGNER FOR THEIR COMMENTS/APPROVAL PRIOR TO COMMENCING WORK.
5. ALL STRUCTURAL, ELECTRICAL, MECHANICAL, LIGHTING, HVAC AND PUBLIC HEALTH ISSUES TO BE REFERRED TO ENGINEER'S INFORMATION PRIOR TO COMMENCEMENT OF WORKS.
6. THE DESIGNS ARE SUBJECT TO APPROVAL BY STATUTORY AUTHORITIES AND ANY NECESSARY ALTERATIONS SHOULD BE MADE IF REQUIRED TO COMPLY WITH STATUTORY REQUIREMENTS.
7. ALL DESIGN CONCEPTS AND DRAWINGS ARE THE PROPERTY OF 1508 LONDON AND ARE COVERED BY COPYRIGHT. NO REPRODUCTIONS, ADAPTATIONS AND/OR COPIES MAY BE MADE WITHOUT WRITTEN PERMISSION BY 1508 LONDON.

Revisions

Rev.	Date	Comment
/	08.06.18	STAGE 4 PRELIMINARY ISSUE
A	22.06.18	ACCESS PANEL DETAIL UPDATED
B	02.08.18	STAGE 4 ISSUE
C	28.09.18	RWD ISSUE - DOOR AND STAIR POST MODIFICATION
D	05.10.18	RWD ISSUE - DOOR AND STAIR POST MODIFICATION
E	09.10.18	RWD ISSUE - DOOR AND STAIR POST MODIFICATION

Key Plan

Project: RUSSELL  
 Status: INFORMATION - FOR TENDER USE ONLY  
 Drawing Name: 100 - GROUND FLOOR  
 GROUND FLOOR MEWS HALL ELEVATIONS  
 Date Issued: 02.08.18 Scale: 1:20@A1  
 Drawn by: DM Amended by: CM Checked by: TP  
 Proj No. Dwg No. Rev. 16028\_AS\_0\_51\_01\_E



- NOTES:
- REFER TO 16028\_SCH\_002 FOR FINISHES SCHEDULE
  - REFER TO 16028\_SCH\_003 FOR SANITARY WARE SCHEDULE
  - REFER TO 16028\_SCH\_007 FOR IRONMONGERY SCHEDULE
  - REFER TO 16028\_SCH\_006 FOR JOINERY SCHEDULE

- NOTES:
- APPROXIMATED OVERALL DIMENSIONS INDICATED ON PLAN ARE INDICATIVE AND SITE MEASUREMENTS MUST BE UNDERTAKEN PRIOR TO CONSTRUCTION AND INSTALLATION.
  - M&E LAYOUT SUBJECT TO CO-ORDINATION UPON RECEIPT OF HOARE LEA'S UPDATED DRAWINGS