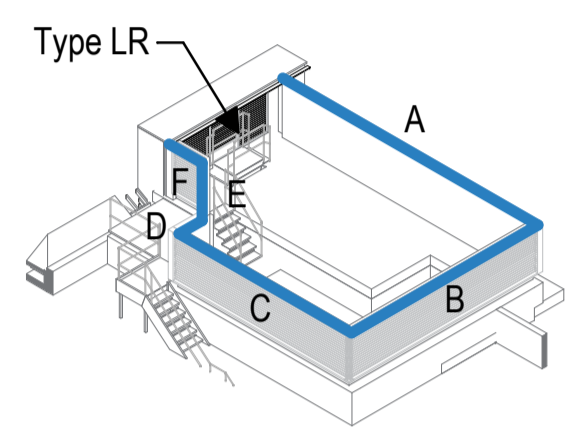
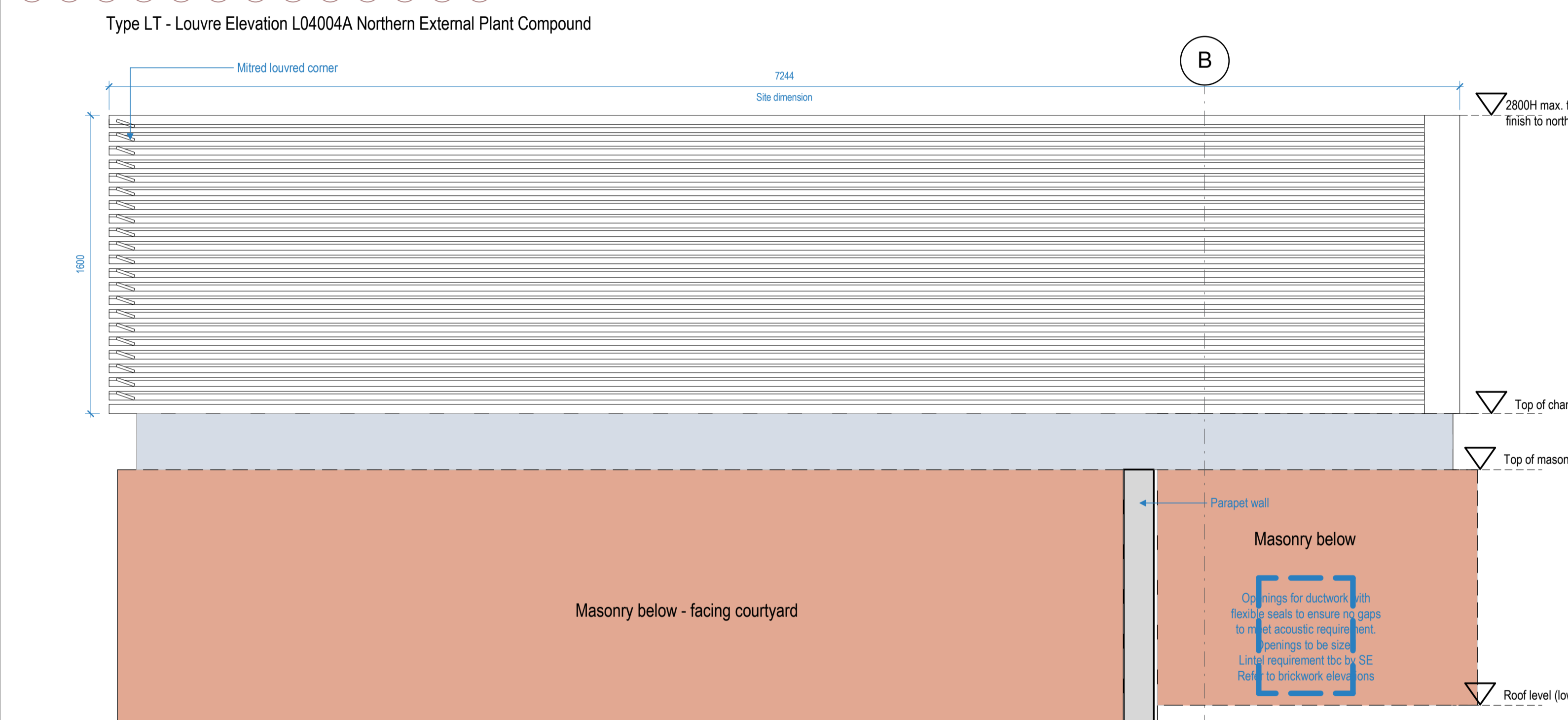


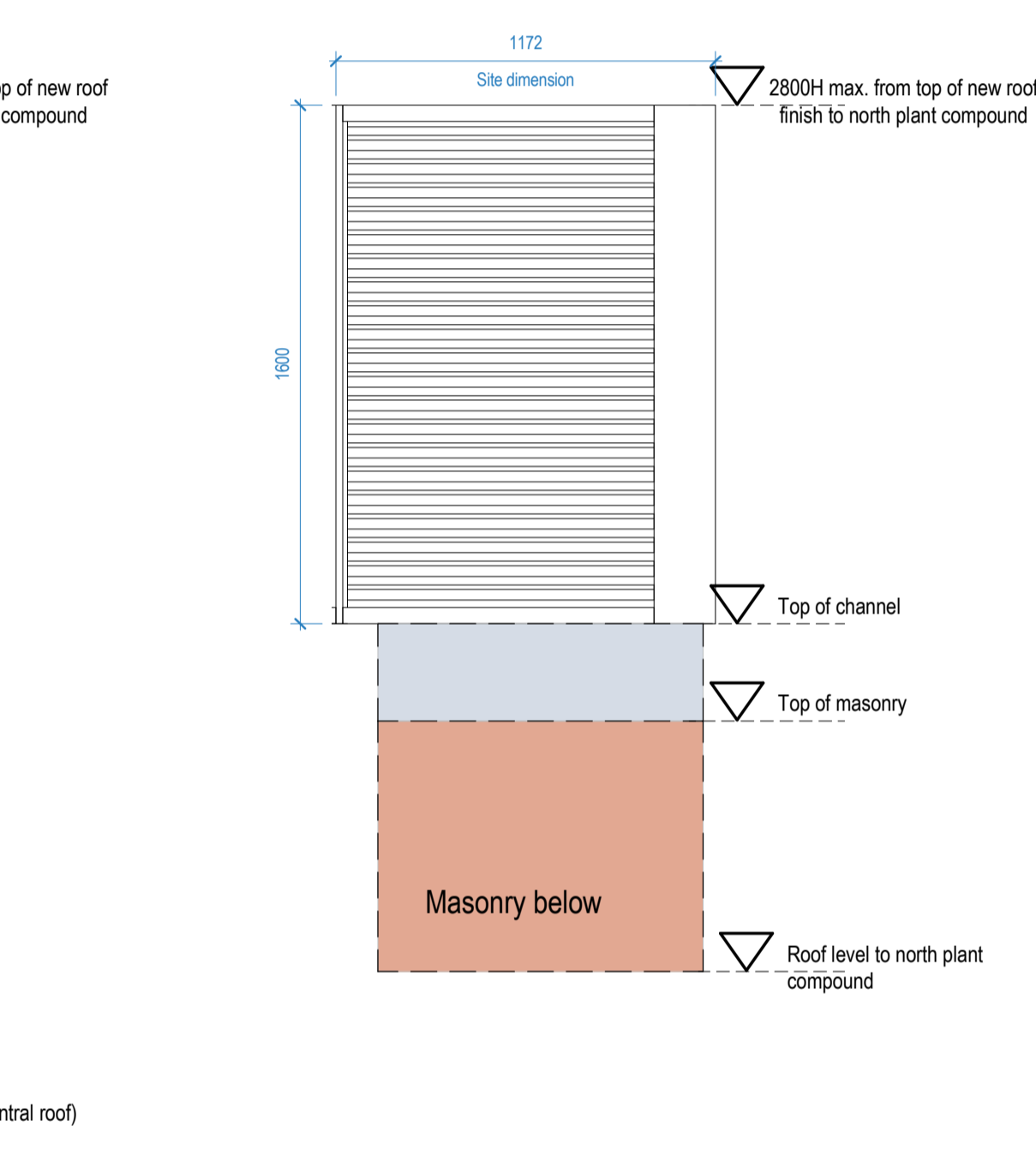
- Notes:**
- 1 For structural openings, see door schedule 1615-ST-Q1-ZZ-SHA-8301-8303
  - 2 Final Measurements to be taken by manufacturer on site prior to manufacture.
  - 3 Door handles to be 1050mm AFFL unless otherwise stated.
  - 4 Door closers to be concealed.
  - 5 Ironmongery - Refer to schedule for all types
  - 6 Refer to 5370-5372 for Typical Louvre Screen Details.
  - 7 Specification Reference 25-55-45/170
  - 8 Please note that a generic louvre system has been drawn to be read in conjunction with Alps proposals
  - 9 Openings for ductwork/service routes to be co-ordinated with MEP engineers prior to manufacturing
  - 10 For fire escape gate to Gage Street, refer to drawing 5654
  - 11 Maximum heights have been noted which have been granted from Camden. This also screens the plant within the compound to meet the acoustic requirements. Any discrepancy should be identified and highlighted to the architect.



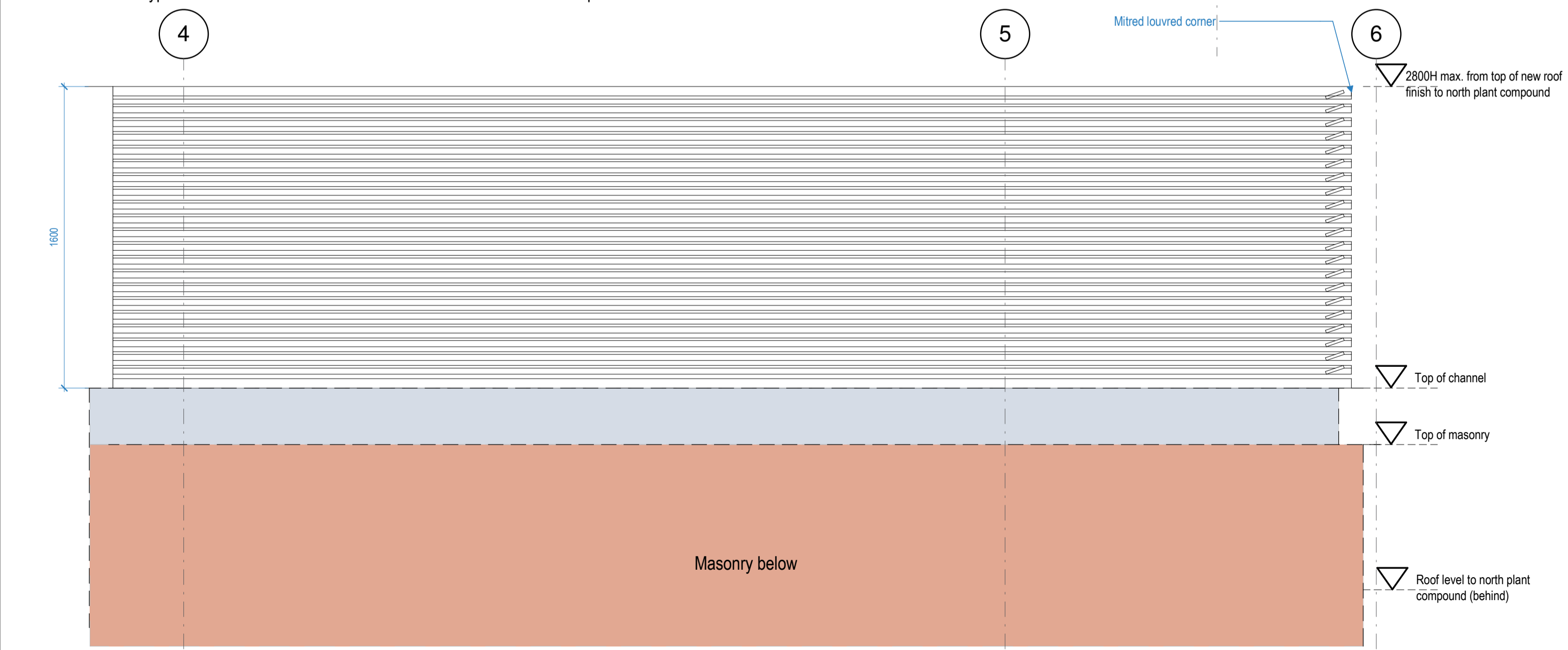
**Northern External Plant Compound**  
Type LT - L04004A, B, C, D, E, F



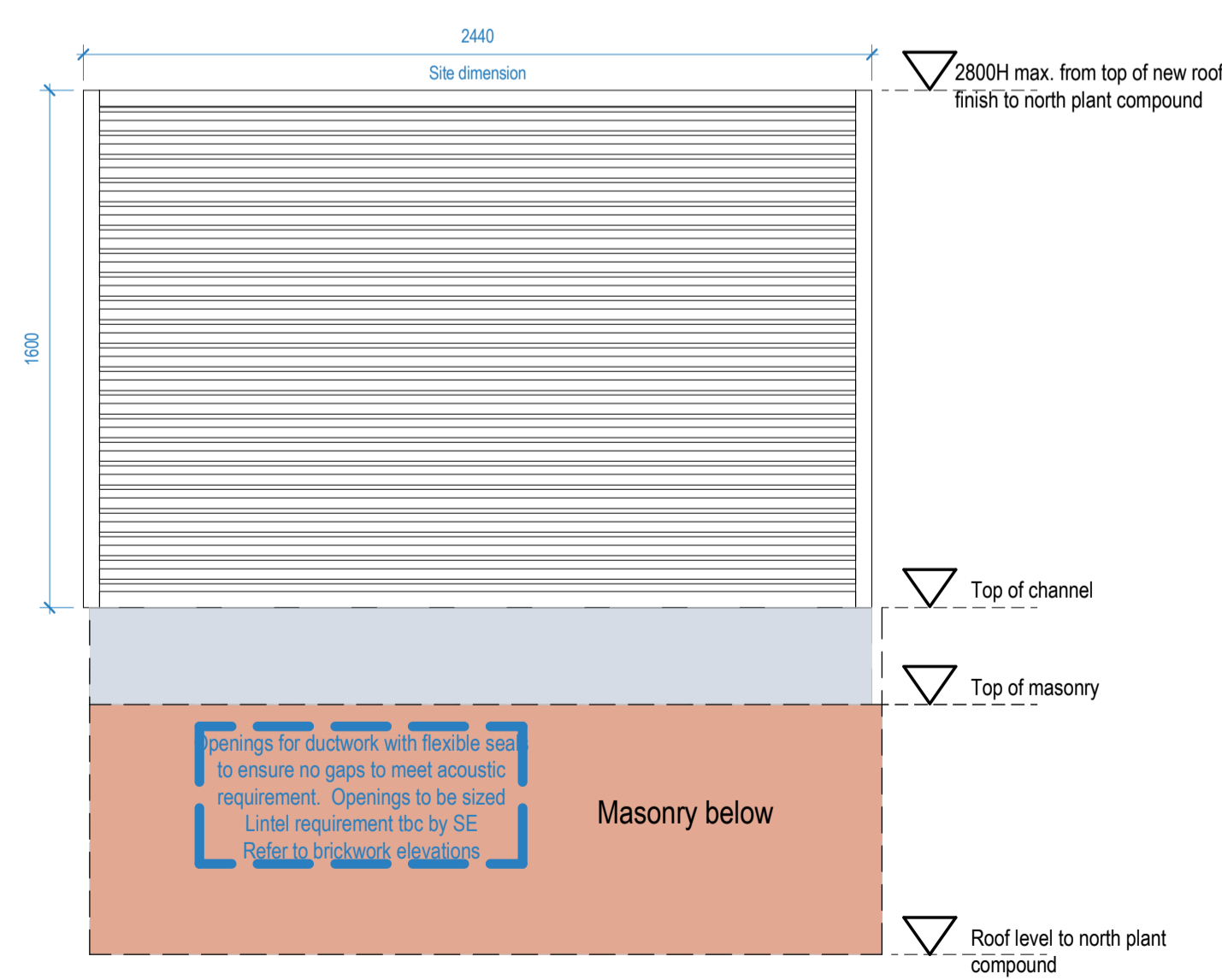
Type LT - Louvre Elevation L04004B Northern External Plant Compound



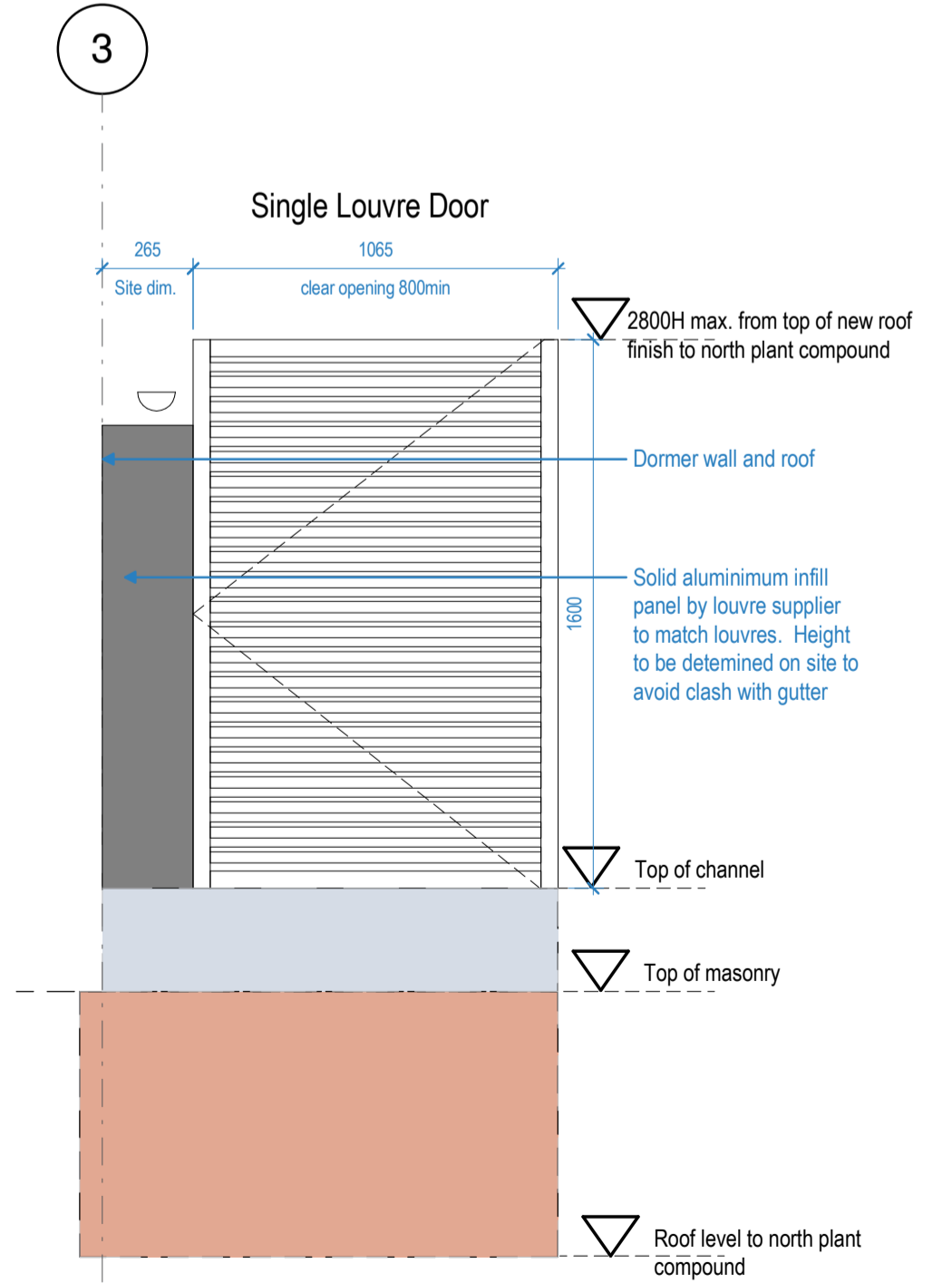
Type LT - Louvre Elevation L04004D Northern External Plant Compound



Type LT Louvre Elevation L04004C Northern External Plant Compound



Type LT - Louvre Elevation L04004E Northern External Plant Compound



Type LT - Louvre Elevation L04004F Northern External Plant Compound

|     |          |  |     |
|-----|----------|--|-----|
| C2  | 16.10.18 | Discharge of Planning Condition/ MJF     | LM  |
| C1  | 19.09.18 | First Construction Issue - Louvres - MJF | LM  |
| A12 | 25.06.18 | REVISED STAGE 4 ISSUE / LM / MJF         | LM  |
| A7  | 07.02.18 | STAGE 4 SUBMISSION/ LM                   | AML |
| P1  | 27.11.17 | Draft Stage 4 Issue / JB                 | LM  |
| A5  | 11.08.17 | STAGE 3 SUBMISSION / LM                  | AML |

| Rev | Date | Details/ Amended by | Sign |
|-----|------|---------------------|------|
|-----|------|---------------------|------|

**sonnemanntoon architects**

Quality House  
6-9 Quality Court  
Chancery Lane  
London WC2A 1HP  
United Kingdom

tel: +44 (0)20 7580 8881  
email: info@st-arch.co.uk  
web: www.st-arch.co.uk

© This drawing is copyright

Do not scale this drawing. Architect to be informed of all discrepancies in dimensions. Contractor to check all dimensions on site.

Project title  
**ITALIAN HOSPITAL**

Drawing title  
**DETAILS: DOORS + LOUVRES**  
Louvre Elevations

| Scale    | Status  | Revision |
|----------|---------|----------|
| 1:20 @A1 | CONSTR. | C2       |

Drawing number  
**1615-ST-Q1-ZZ-DR-A-5307**

