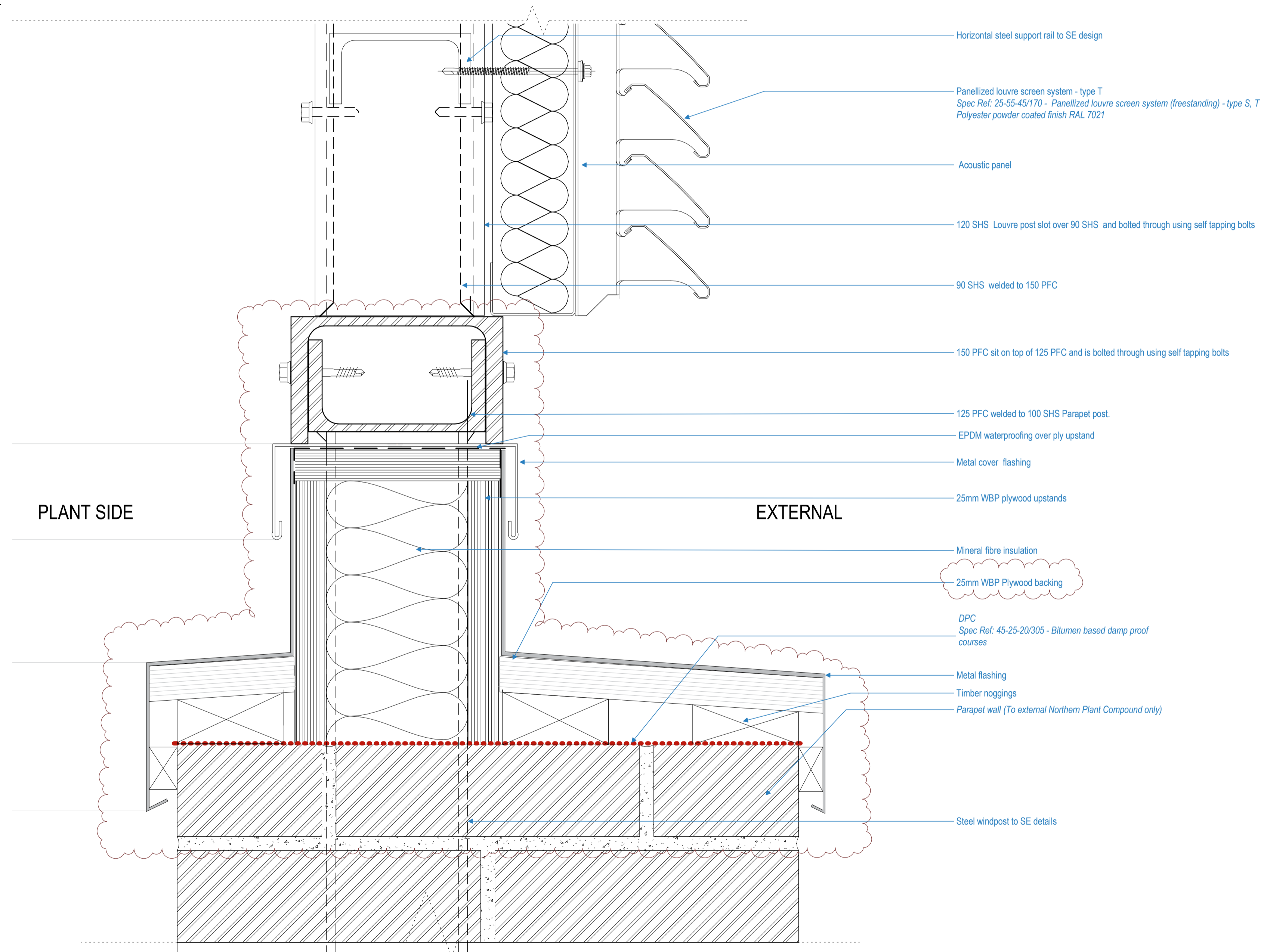
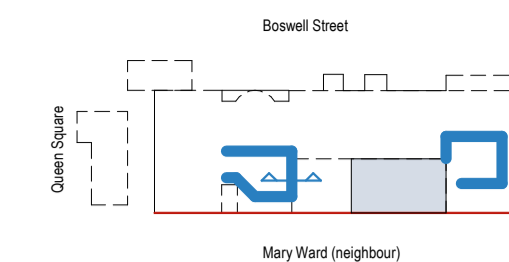


2  
5370  
Typical Louvred Screens - Head Detail  
1:2



1  
5370  
Detail - North compound louvre parapet  
1:2

Key Plan



Key

- Existing party wall
- Proposed courtyard extension

Notes:

- 1 Final Measurements to be taken by manufacturer on site prior to manufacture.
- 2 Ironmongery - Refer to schedule for all types Refer to 5370-5372 for Typical Louvre Screen Details.
- 3 Specification Reference 25-55-45/170
- 4 Upstand detail and steel posts to be by SE, not part of louvre package
- 5 Please note that a specific system has been drawn at this stage to be read in conjunction with Alps proposals
- 6 Openings for ductwork/service routes to be co-ordinated with MEP engineers prior to manufacture.

Rev	Date	Details/ Amended by	Sign
C1	19.09.18	First Construction Issue - Louvres -MJF	LM
A12	25.06.18	REVISED STAGE 4 ISSUE / LM / MJF	LM
A7	07.02.18	STAGE 4 SUBMISSION/ LM	AML
P1	27.11.17	Draft Stage 4 Issue / JB	LM

Rev	Date	Details/ Amended by	Sign
-----	------	---------------------	------

**sonnemanntoon**  
architects

Quality House  
6-9 Quality Court  
Chancery Lane  
London WC2A 1HP  
United Kingdom  
Tel: +44 (0)20 7580 8881  
email: info@st-arch.co.uk  
web: www.st-arch.co.uk  
© This drawing is copyright

Do not scale this drawing. Architect to be informed of all discrepancies in dimensions. Contractor to check all dimensions on site.

Project title  
ITALIAN HOSPITAL  
Drawing title  
DETAILS: DOORS + LOUVRES  
External Louvred Screens

Scale Status Revision  
1:2 @A1 CONSTR. C1

Drawing number  
1615-ST-Q1-04-DR-A-5370

