

① No. 18 Wedderburn Road as viewed looking South East from Wedderburn Road



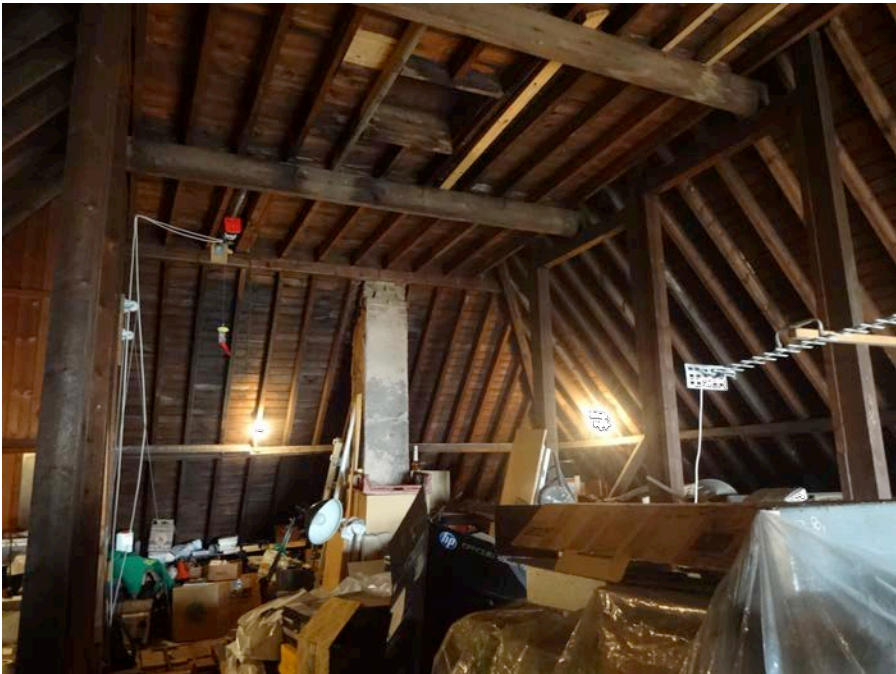
② No. 18 Wedderburn Road rear elevation as viewed from the garden



③ No. 16 Wedderburn Road as viewed from the rear garden of 18 Wedderburn Road.



④ No. 20 Wedderburn Road as viewed from the rear garden of 18 Wedderburn Road



⑤ Internal rear view of No.18 Wedderburn Road loft



⑥ Existing birds eye rear view of Wedderburn Road properties 10-24 (evens). Demonstrates existing alterations to neighbouring properties of the same style

EXISTING SITE PHOTOS

PLANNING

			<div>PROJECT</div> <div>18 WEDDERBURN ROAD LONDON, NW3 5QG</div>					<div>DRAWING TITLE</div> <div>EXISTING SITE PHOTOS</div>	
			<div>CLIENT</div> <div>ADAM ANDREWS</div>					<div><div>gpad</div><div>architecture & interior design</div></div> <div><div>T: 020 7549 2133</div><div>E: info@gpadlondonltd.com</div><div>W: www.gpadlondonltd.com</div></div> <div><div>2nd Floor</div><div>130 Old Street</div><div>London EC1V 9BD</div></div>	
			<div>SCALE</div> <div>N/A</div>		<div>DATE</div> <div>17/10/18</div>	<div>DWG BY</div> <div>SF</div>	<div>REV.</div>		
- -	17/10/18	First Issue for Planning	<div>CHKD.</div> <div>JW</div>	<div>DWG NO.</div> <div>610-PL-012</div>	- -				
<div>This drawing is the copyright of gpad london ltd. Not to be reproduced, retained or disclosed to any unauthorised person either wholly or in part without written permission. Do not scale of this drawing. All indicated dimensions to be checked and verified on site by the contractor before commencement of any fabrication drawings or work whatsoever on site. Report any discrepancies to the Architect immediately. Drawings to be read in conjunction with relevant drawings and specification.</div> <div>© gpad london ltd.</div>									