

80 Charlotte Street, London

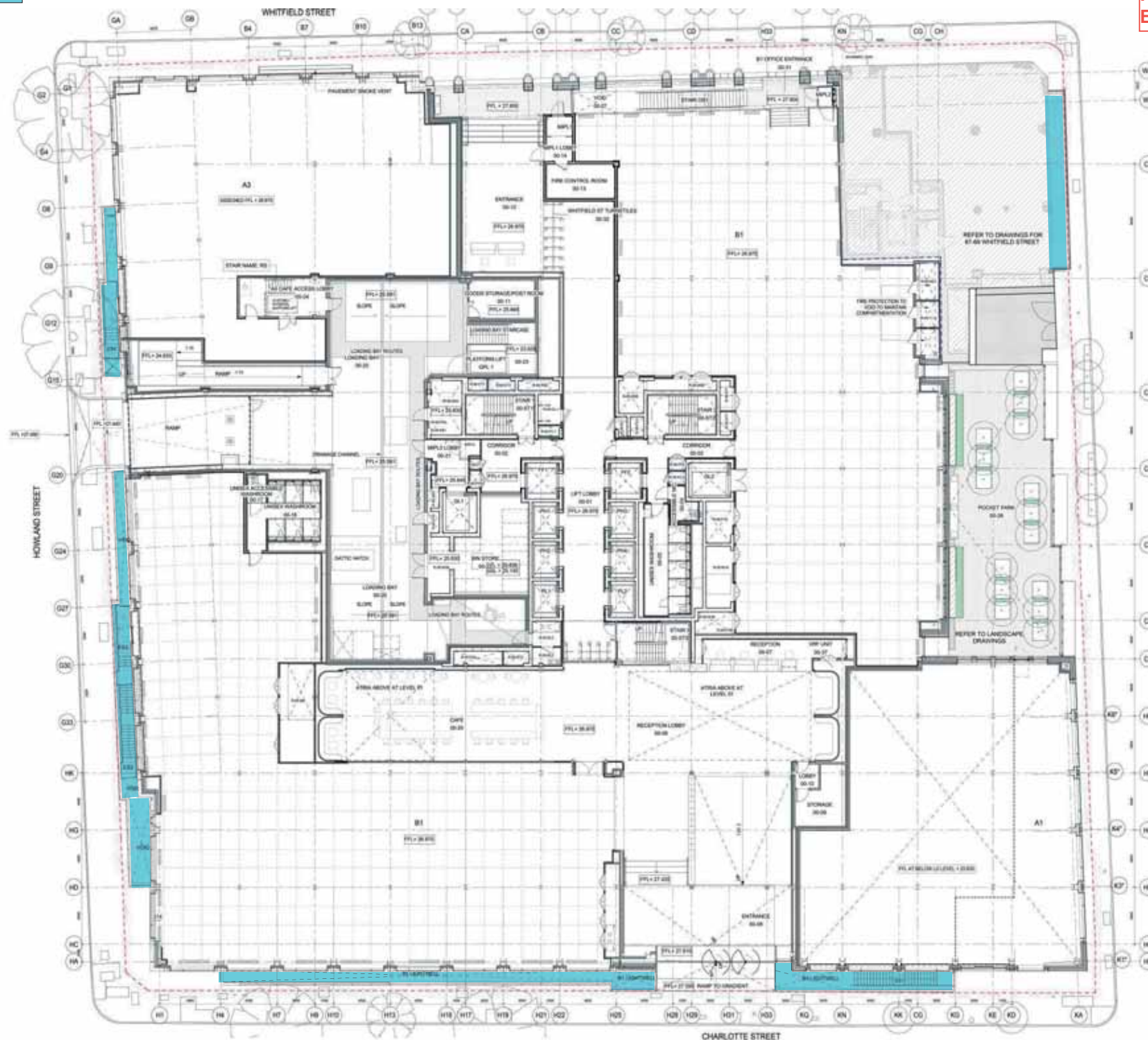
Planning Condition 11d

Condition 11d: Position , Size and Means of
Enclosing All Consented Lightwells

May 2018

Consented Lightwells

Condition 11d Position, Size and Means of Enclosing All Consented Lightwells



- NOTES
1. TO BE USED IN CONJUNCTION WITH FOLLOWING DRAWINGS AND DOCUMENTS
 2. A-11 SERIES FOR 1:50 PLANS
 3. A-12 SERIES FOR ELEVATIONS
 4. A-13 SERIES FOR SECTIONS
 5. A-14 SERIES FOR FINISH ELEVATIONS
 6. A-15 SERIES FOR FINISH SECTIONS
 7. A-16 SERIES FOR FINISH SECTIONS
 8. A-17 SERIES FOR FINISH SECTIONS
 9. A-18 SERIES FOR FINISH SECTIONS
 10. A-19 SERIES FOR FINISH SECTIONS
 11. A-20 SERIES FOR FINISH SECTIONS
 12. A-21 SERIES FOR FINISH SECTIONS
 13. A-22 SERIES FOR FINISH SECTIONS
 14. A-23 SERIES FOR FINISH SECTIONS
 15. A-24 SERIES FOR FINISH SECTIONS
 16. A-25 SERIES FOR FINISH SECTIONS
 17. A-26 SERIES FOR FINISH SECTIONS
 18. A-27 SERIES FOR FINISH SECTIONS
 19. A-28 SERIES FOR FINISH SECTIONS
 20. A-29 SERIES FOR FINISH SECTIONS
 21. A-30 SERIES FOR FINISH SECTIONS
 22. A-31 SERIES FOR FINISH SECTIONS
 23. A-32 SERIES FOR FINISH SECTIONS
 24. A-33 SERIES FOR FINISH SECTIONS
 25. A-34 SERIES FOR FINISH SECTIONS
 26. A-35 SERIES FOR FINISH SECTIONS
 27. A-36 SERIES FOR FINISH SECTIONS
 28. A-37 SERIES FOR FINISH SECTIONS
 29. A-38 SERIES FOR FINISH SECTIONS
 30. A-39 SERIES FOR FINISH SECTIONS
 31. A-40 SERIES FOR FINISH SECTIONS
 32. A-41 SERIES FOR FINISH SECTIONS
 33. A-42 SERIES FOR FINISH SECTIONS
 34. A-43 SERIES FOR FINISH SECTIONS
 35. A-44 SERIES FOR FINISH SECTIONS
 36. A-45 SERIES FOR FINISH SECTIONS
 37. A-46 SERIES FOR FINISH SECTIONS
 38. A-47 SERIES FOR FINISH SECTIONS
 39. A-48 SERIES FOR FINISH SECTIONS
 40. A-49 SERIES FOR FINISH SECTIONS
 41. A-50 SERIES FOR FINISH SECTIONS
 42. A-51 SERIES FOR FINISH SECTIONS
 43. A-52 SERIES FOR FINISH SECTIONS
 44. A-53 SERIES FOR FINISH SECTIONS
 45. A-54 SERIES FOR FINISH SECTIONS
 46. A-55 SERIES FOR FINISH SECTIONS
 47. A-56 SERIES FOR FINISH SECTIONS
 48. A-57 SERIES FOR FINISH SECTIONS
 49. A-58 SERIES FOR FINISH SECTIONS
 50. A-59 SERIES FOR FINISH SECTIONS
 51. A-60 SERIES FOR FINISH SECTIONS
 52. A-61 SERIES FOR FINISH SECTIONS
 53. A-62 SERIES FOR FINISH SECTIONS
 54. A-63 SERIES FOR FINISH SECTIONS
 55. A-64 SERIES FOR FINISH SECTIONS
 56. A-65 SERIES FOR FINISH SECTIONS
 57. A-66 SERIES FOR FINISH SECTIONS
 58. A-67 SERIES FOR FINISH SECTIONS
 59. A-68 SERIES FOR FINISH SECTIONS
 60. A-69 SERIES FOR FINISH SECTIONS
 61. A-70 SERIES FOR FINISH SECTIONS
 62. A-71 SERIES FOR FINISH SECTIONS
 63. A-72 SERIES FOR FINISH SECTIONS
 64. A-73 SERIES FOR FINISH SECTIONS
 65. A-74 SERIES FOR FINISH SECTIONS
 66. A-75 SERIES FOR FINISH SECTIONS
 67. A-76 SERIES FOR FINISH SECTIONS
 68. A-77 SERIES FOR FINISH SECTIONS
 69. A-78 SERIES FOR FINISH SECTIONS
 70. A-79 SERIES FOR FINISH SECTIONS
 71. A-80 SERIES FOR FINISH SECTIONS
 72. A-81 SERIES FOR FINISH SECTIONS
 73. A-82 SERIES FOR FINISH SECTIONS
 74. A-83 SERIES FOR FINISH SECTIONS
 75. A-84 SERIES FOR FINISH SECTIONS
 76. A-85 SERIES FOR FINISH SECTIONS
 77. A-86 SERIES FOR FINISH SECTIONS
 78. A-87 SERIES FOR FINISH SECTIONS
 79. A-88 SERIES FOR FINISH SECTIONS
 80. A-89 SERIES FOR FINISH SECTIONS
 81. A-90 SERIES FOR FINISH SECTIONS
 82. A-91 SERIES FOR FINISH SECTIONS
 83. A-92 SERIES FOR FINISH SECTIONS
 84. A-93 SERIES FOR FINISH SECTIONS
 85. A-94 SERIES FOR FINISH SECTIONS
 86. A-95 SERIES FOR FINISH SECTIONS
 87. A-96 SERIES FOR FINISH SECTIONS
 88. A-97 SERIES FOR FINISH SECTIONS
 89. A-98 SERIES FOR FINISH SECTIONS
 90. A-99 SERIES FOR FINISH SECTIONS
 91. A-100 SERIES FOR FINISH SECTIONS

1:500 SCALE

1:500 SCALE

1:500 SCALE

1:500 SCALE

1:500 SCALE

1:500 SCALE

1:500 SCALE

1:500 SCALE

1:500 SCALE

1:500 SCALE

1:500 SCALE

1:500 SCALE

1:500 SCALE

1:500 SCALE

1:500 SCALE

1:500 SCALE

1:500 SCALE

1:500 SCALE

1:500 SCALE

1:500 SCALE

1:500 SCALE

1:500 SCALE

1:500 SCALE

1:500 SCALE

1:500 SCALE

1:500 SCALE

1:500 SCALE

1:500 SCALE

1:500 SCALE

1:500 SCALE

1:500 SCALE

1:500 SCALE

1:500 SCALE

1:500 SCALE

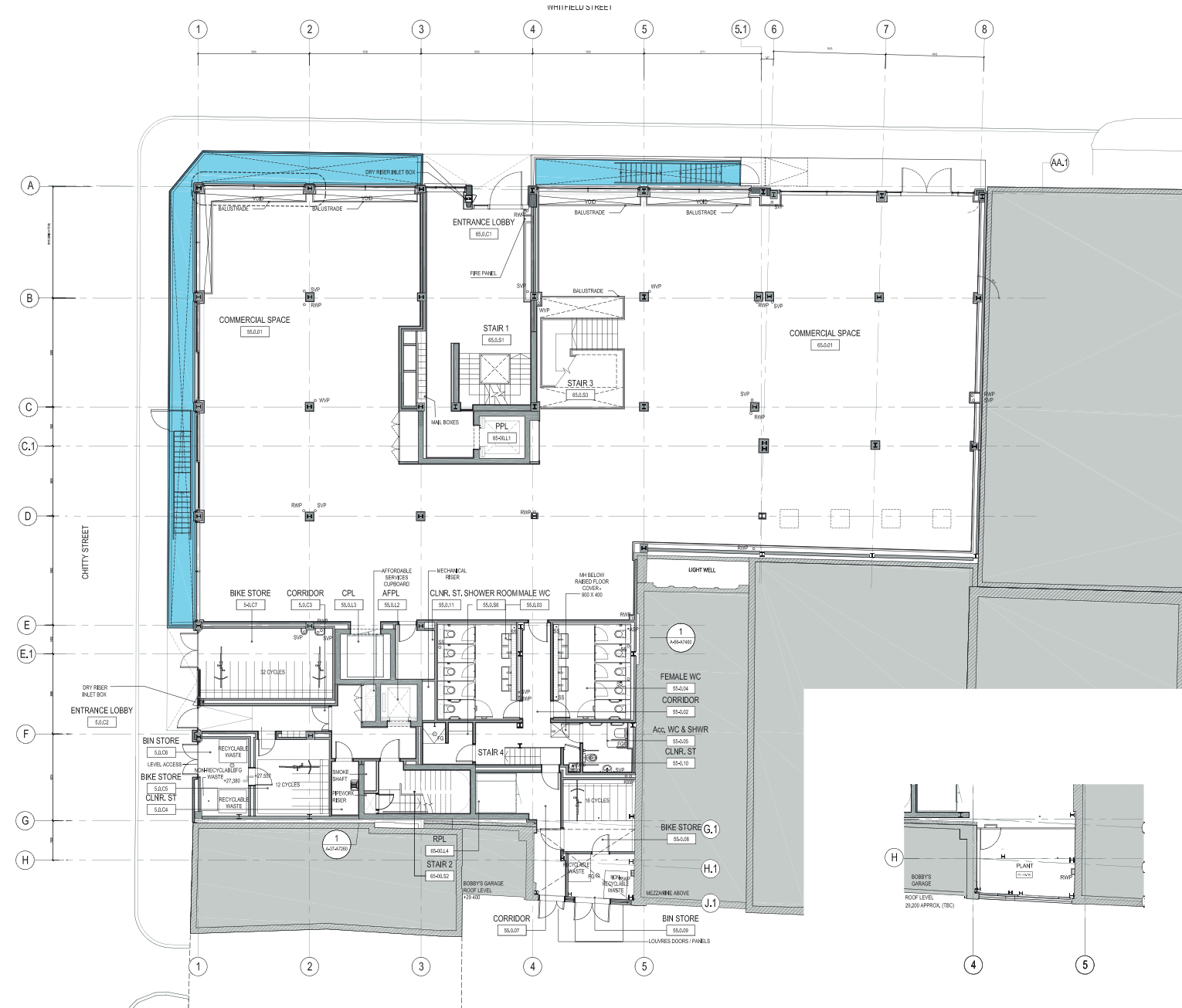
1:500 SCALE

1:500 SCALE

1:500 SCALE

1:500 SCALE

ALL DIMENSIONS ARE IN MILLIMETERS UNLESS NOTED OTHERWISE. SUB CONTRACTOR TO REVEAL DETAILS



01 LEVEL 00 PLAN
SCALE: 1 : 100

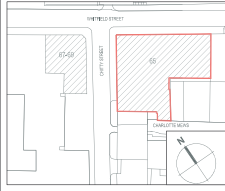
02 MEZZANINE (PLANT)
SCALE: 1 : 100



PROPOSED

01 DRAWING ISSUE FOR CONDITION 11d
REV. DATE: 17/04/2023
LOCATION: PLAN

AS ISSUED BY: CHECKED BY:



Amey Fender Katsalidis

Amey Fender Katsalidis
17-19 Whitfield Street
London, EC2M 4HH

COLOR: **DERWENT LONDON MULTIPLEX**

PROJECT: **65 & 67-69 WHITFIELD STREET**

DRAWING: **65WS - Level 00 - GA Plan**

PROJECT NO.	44043	DRAWN	DM	CHECKED	SI
STATUS	FOR PLANNING	SCALE	1 : 100	REVISION	00
DRAWING NO.	A-07-P5500				

80 Charlotte Street

Existing Railing

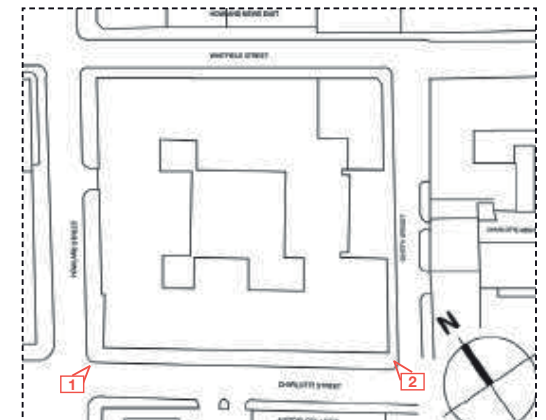
Condition 11d
Position, Size and Means of
Enclosing All Consented Lightwells



1



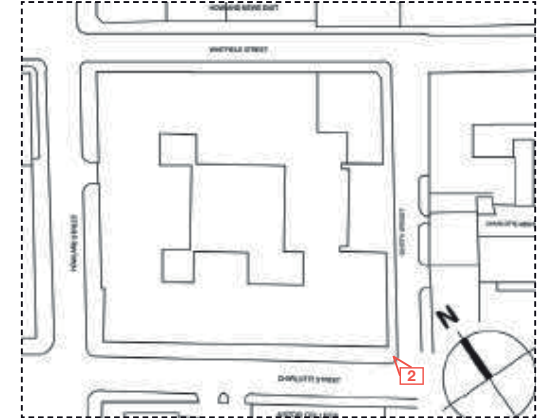
2



80 Charlotte Street

New Railing

Condition 11d
Position, Size and Means of
Enclosing All Consented Lightwells



2

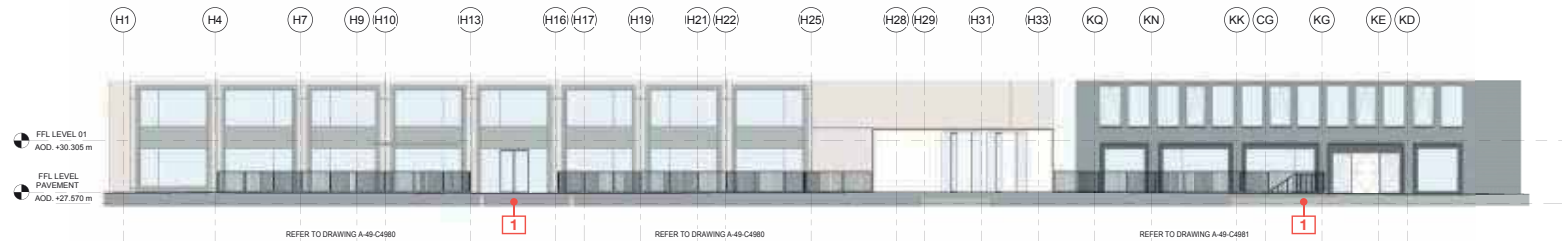


Condition 11d Position, Size and Means of Enclosing All Consented Lightwells

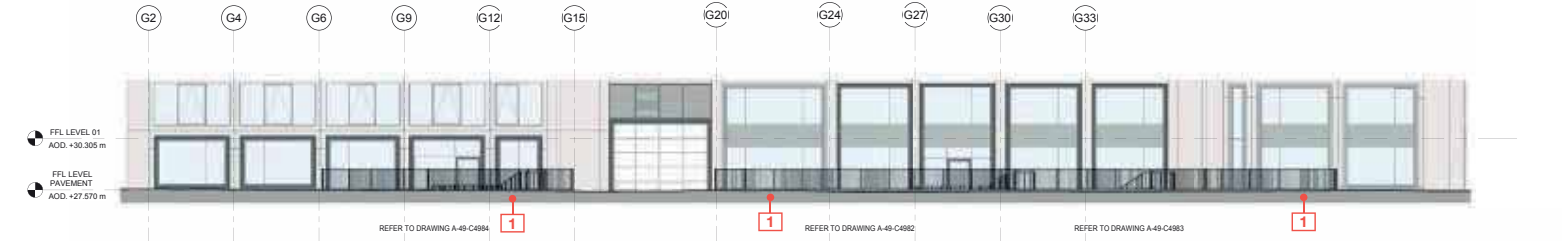
UNLESS OTHERWISE SPECIFIED, ALL DIMENSIONS SHALL TAKE PRECEDENCE TO SCALED DIMENSIONS.

LIGHTWELL METAL RAILING FINISHES NOTES

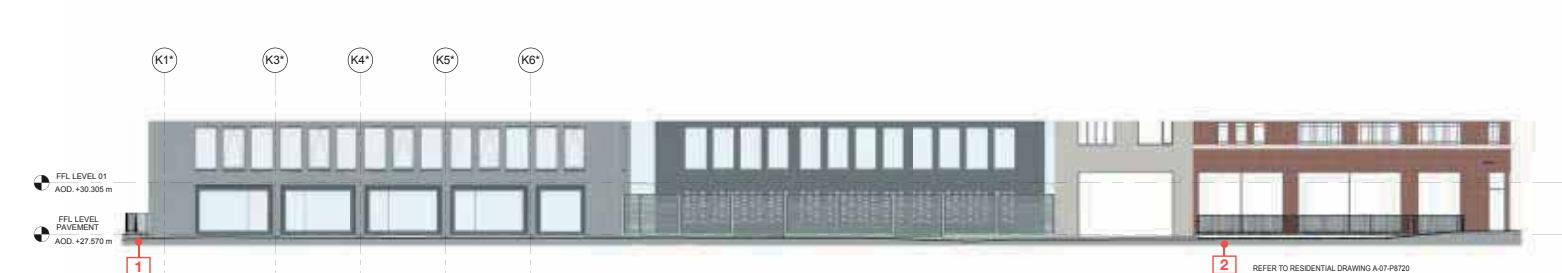
1. ALL FRAMING AND BARS TO BE MILD STEEL GALVANIZED AND PAINTED WITH EXTERNAL GRADE CORROSION RESISTANT PAINT. RAL 7021



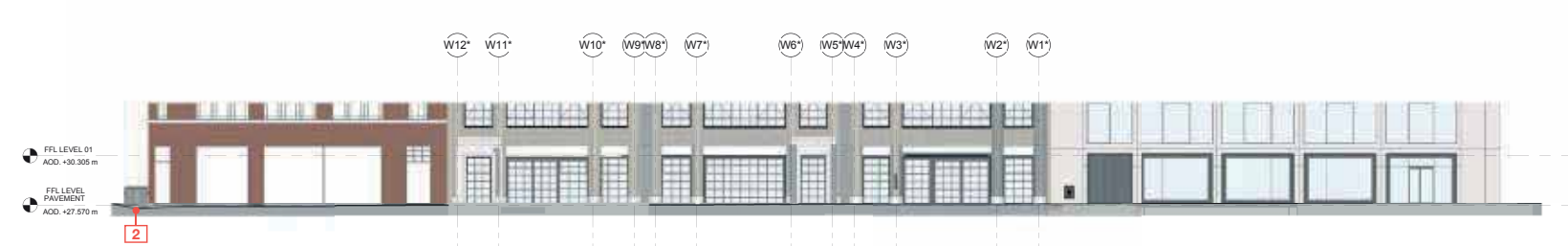
1 CHARLOTTE STREET
SCALE: 1: 100



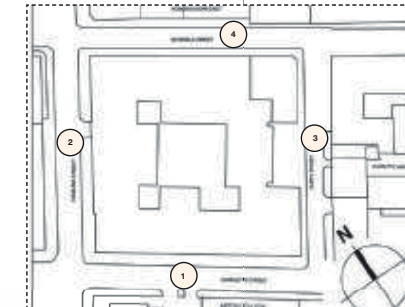
2 HOWLAND STREET
SCALE: 1: 100



3 CHITTY STREET
SCALE: 1: 100



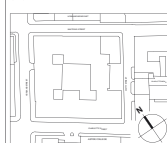
4 WHITFIELD STREET
SCALE: 1: 100



1 New Railing
2 Refurbished Railing

80 CHARLOTTE STREET
REV. DRAWING DESCRIPTION
DRAWN BY CHECK BY

PROPOSED



Amey Fender Katsalidis
T: +44 20 3772 7320
E: info@afkstudios.com
W: afkstudios.com
44-46 Scutcheon Street, London, EC2A 4HH

CLIENT
DEPARTMENT OF TRANSPORTS
MULTIPLEX

PROJECT
80 CHARLOTTE STREET

DRAWING TITLE
LIGHTWELL METAL RAILINGS

PROJECT NO.
44034

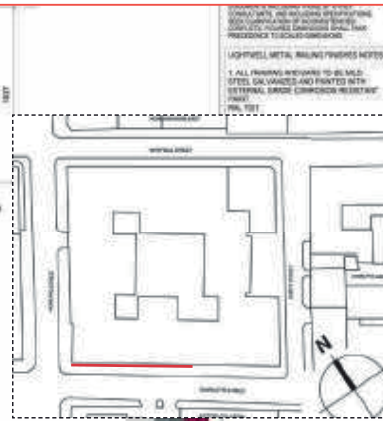
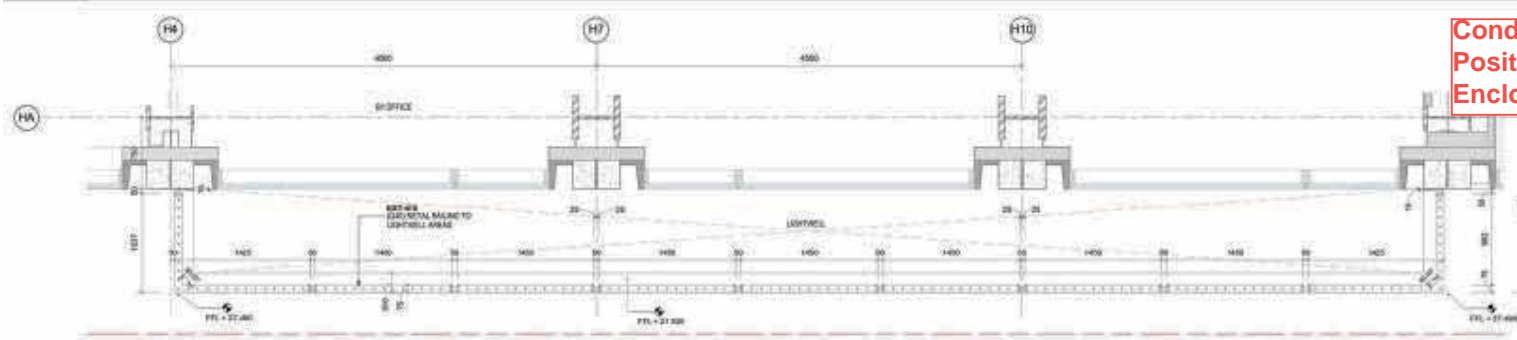
FOR PLANNING
A-07-P4985

SCALE
As Indicated @ A0

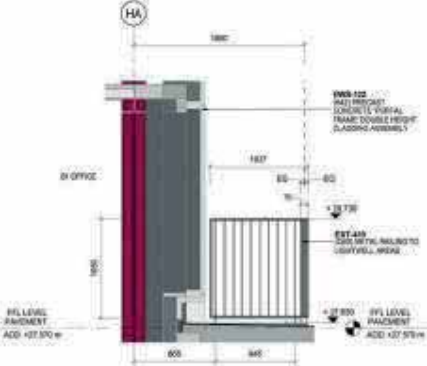
REVISION
00



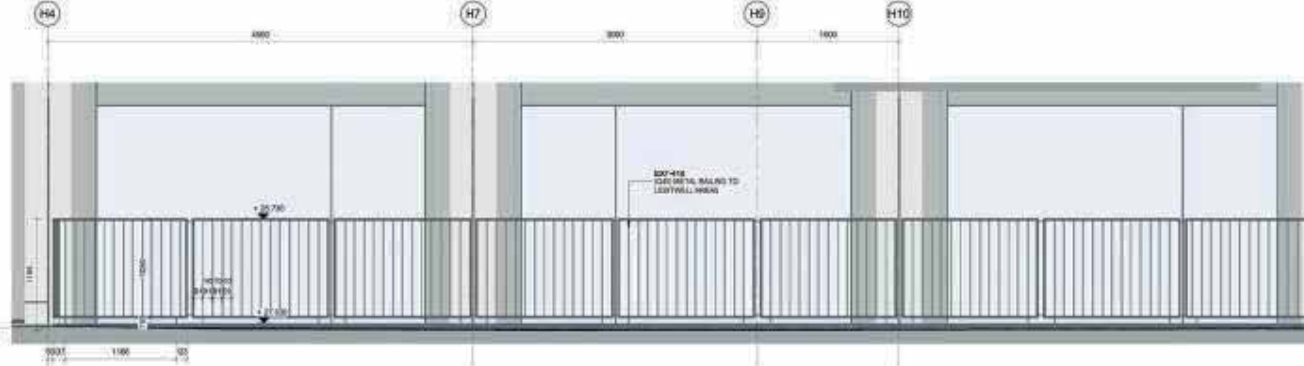
Condition 11d
Position, Size and Means of
Enclosing All Consented Lightwells



GA LEVEL 3 - KEY PLAN CHARLOTTE STREET
 SCALE: 1:20



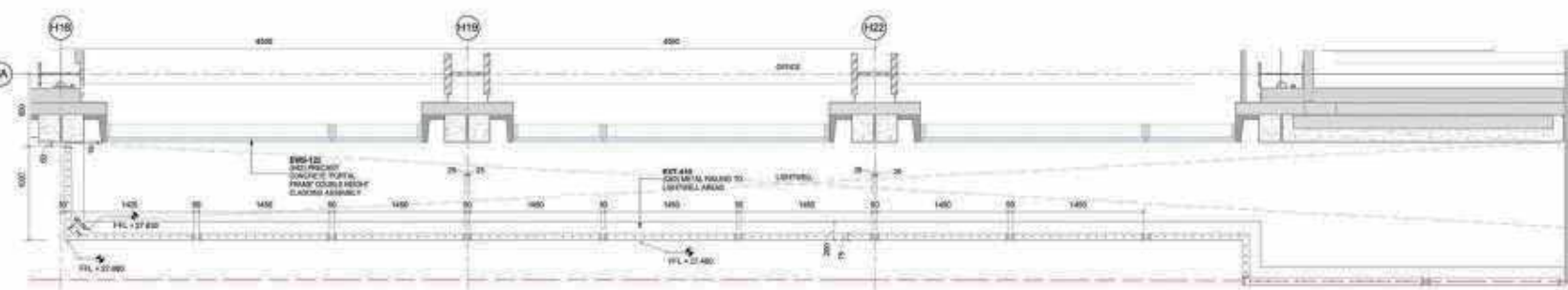
CHARLOTTE STREET - RAILING 01
 SCALE: 1:20



CHARLOTTE STREET - RAILING 02
 SCALE: 1:20



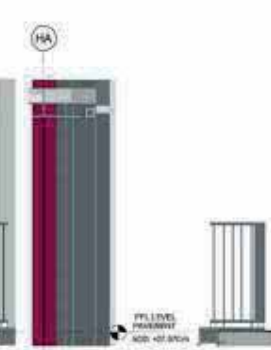
CHARLOTTE STREET - RAILING 03
 SCALE: 1:20



GA LEVEL 4 - KEY PLAN CHARLOTTE STREET 2
 SCALE: 1:20



CHARLOTTE STREET - RAILING 05
 SCALE: 1:20



CHARLOTTE STREET - RAILING 06
 SCALE: 1:20



CHARLOTTE STREET - RAILING 07
 SCALE: 1:20

PROPOSED

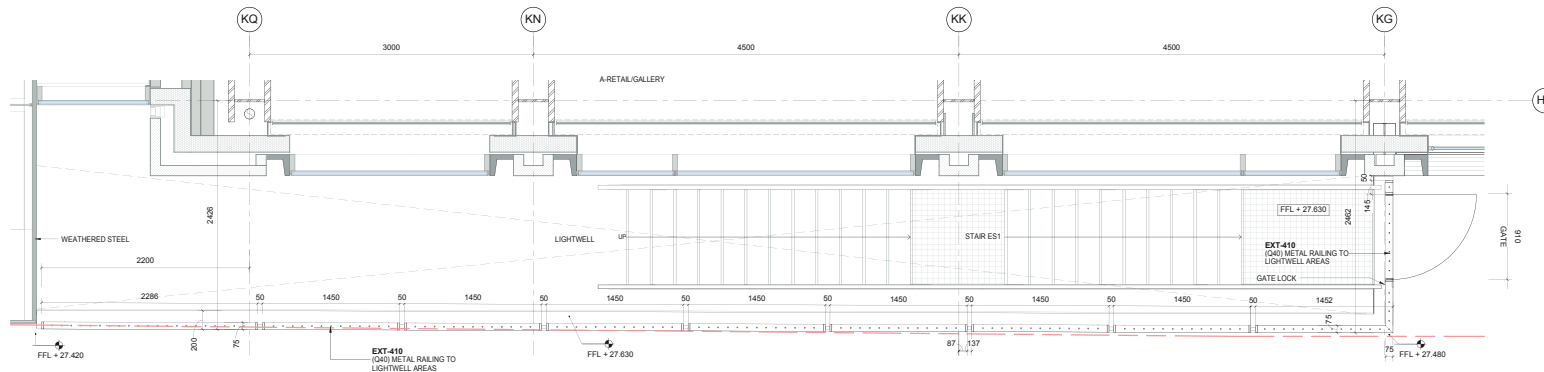


Arney Fender Katsalidis
 Arney Fender Katsalidis
 11-14-20-21-22-23-24-25-26-27-28-29-30-31-32-33-34-35-36-37-38-39-40-41-42-43-44-45-46-47-48-49-50-51-52-53-54-55-56-57-58-59-60-61-62-63-64-65-66-67-68-69-70-71-72-73-74-75-76-77-78-79-80-81-82-83-84-85-86-87-88-89-90-91-92-93-94-95-96-97-98-99-100-101-102-103-104-105-106-107-108-109-110-111-112-113-114-115-116-117-118-119-120-121-122-123-124-125-126-127-128-129-130-131-132-133-134-135-136-137-138-139-140-141-142-143-144-145-146-147-148-149-150-151-152-153-154-155-156-157-158-159-160-161-162-163-164-165-166-167-168-169-170-171-172-173-174-175-176-177-178-179-180-181-182-183-184-185-186-187-188-189-190-191-192-193-194-195-196-197-198-199-200-201-202-203-204-205-206-207-208-209-210-211-212-213-214-215-216-217-218-219-220-221-222-223-224-225-226-227-228-229-230-231-232-233-234-235-236-237-238-239-240-241-242-243-244-245-246-247-248-249-250-251-252-253-254-255-256-257-258-259-260-261-262-263-264-265-266-267-268-269-270-271-272-273-274-275-276-277-278-279-280-281-282-283-284-285-286-287-288-289-290-291-292-293-294-295-296-297-298-299-300-301-302-303-304-305-306-307-308-309-310-311-312-313-314-315-316-317-318-319-320-321-322-323-324-325-326-327-328-329-330-331-332-333-334-335-336-337-338-339-340-341-342-343-344-345-346-347-348-349-350-351-352-353-354-355-356-357-358-359-360-361-362-363-364-365-366-367-368-369-370-371-372-373-374-375-376-377-378-379-380-381-382-383-384-385-386-387-388-389-390-391-392-393-394-395-396-397-398-399-400-401-402-403-404-405-406-407-408-409-410-411-412-413-414-415-416-417-418-419-420-421-422-423-424-425-426-427-428-429-430-431-432-433-434-435-436-437-438-439-440-441-442-443-444-445-446-447-448-449-450-451-452-453-454-455-456-457-458-459-460-461-462-463-464-465-466-467-468-469-470-471-472-473-474-475-476-477-478-479-480-481-482-483-484-485-486-487-488-489-490-491-492-493-494-495-496-497-498-499-500-501-502-503-504-505-506-507-508-509-510-511-512-513-514-515-516-517-518-519-520-521-522-523-524-525-526-527-528-529-530-531-532-533-534-535-536-537-538-539-540-541-542-543-544-545-546-547-548-549-550-551-552-553-554-555-556-557-558-559-560-561-562-563-564-565-566-567-568-569-570-571-572-573-574-575-576-577-578-579-580-581-582-583-584-585-586-587-588-589-590-591-592-593-594-595-596-597-598-599-600-601-602-603-604-605-606-607-608-609-610-611-612-613-614-615-616-617-618-619-620-621-622-623-624-625-626-627-628-629-630-631-632-633-634-635-636-637-638-639-640-641-642-643-644-645-646-647-648-649-650-651-652-653-654-655-656-657-658-659-660-661-662-663-664-665-666-667-668-669-670-671-672-673-674-675-676-677-678-679-680-681-682-683-684-685-686-687-688-689-690-691-692-693-694-695-696-697-698-699-700-701-702-703-704-705-706-707-708-709-710-711-712-713-714-715-716-717-718-719-720-721-722-723-724-725-726-727-728-729-730-731-732-733-734-735-736-737-738-739-740-741-742-743-744-745-746-747-748-749-750-751-752-753-754-755-756-757-758-759-760-761-762-763-764-765-766-767-768-769-770-771-772-773-774-775-776-777-778-779-780-781-782-783-784-785-786-787-788-789-790-791-792-793-794-795-796-797-798-799-800-801-802-803-804-805-806-807-808-809-810-811-812-813-814-815-816-817-818-819-820-821-822-823-824-825-826-827-828-829-830-831-832-833-834-835-836-837-838-839-840-841-842-843-844-845-846-847-848-849-850-851-852-853-854-855-856-857-858-859-860-861-862-863-864-865-866-867-868-869-870-871-872-873-874-875-876-877-878-879-880-881-882-883-884-885-886-887-888-889-890-891-892-893-894-895-896-897-898-899-900-901-902-903-904-905-906-907-908-909-910-911-912-913-914-915-916-917-918-919-920-921-922-923-924-925-926-927-928-929-930-931-932-933-934-935-936-937-938-939-940-941-942-943-944-945-946-947-948-949-950-951-952-953-954-955-956-957-958-959-960-961-962-963-964-965-966-967-968-969-970-971-972-973-974-975-976-977-978-979-980-981-982-983-984-985-986-987-988-989-990-991-992-993-994-995-996-997-998-999-1000-1001-1002-1003-1004-1005-1006-1007-1008-1009-1010-1011-1012-1013-1014-1015-1016-1017-1018-1019-1020-1021-1022-1023-1024-1025-1026-1027-1028-1029-1030-1031-1032-1033-1034-1035-1036-1037-1038-1039-1040-1041-1042-1043-1044-1045-1046-1047-1048-1049-1050-1051-1052-1053-1054-1055-1056-1057-1058-1059-1060-1061-1062-1063-1064-1065-1066-1067-1068-1069-1070-1071-1072-1073-1074-1075-1076-1077-1078-1079-1080-1081-1082-1083-1084-1085-1086-1087-1088-1089-1090-1091-1092-1093-1094-1095-1096-1097-1098-1099-1100-1101-1102-1103-1104-1105-1106-1107-1108-1109-1110-1111-1112-1113-1114-1115-1116-1117-1118-1119-1120-1121-1122-1123-1124-1125-1126-1127-1128-1129-1130-1131-1132-1133-1134-1135-1136-1137-1138-1139-1140-1141-1142-1143-1144-1145-1146-1147-1148-1149-1150-1151-1152-1153-1154-1155-1156-1157-1158-1159-1160-1161-1162-1163-1164-1165-1166-1167-1168-1169-1170-1171-1172-1173-1174-1175-1176-1177-1178-1179-1180-1181-1182-1183-1184-1185-1186-1187-1188-1189-1190-1191-1192-1193-1194-1195-1196-1197-1198-1199-1200-1201-1202-1203-1204-1205-1206-1207-1208-1209-1210-1211-1212-1213-1214-1215-1216-1217-1218-1219-1220-1221-1222-1223-1224-1225-1226-1227-1228-1229-1230-1231-1232-1233-1234-1235-1236-1237-1238-1239-1240-1241-1242-1243-1244-1245-1246-1247-1248-1249-1250-1251-1252-1253-1254-1255-1256-1257-1258-1259-1260-1261-1262-1263-1264-1265-1266-1267-1268-1269-1270-1271-1272-1273-1274-1275-1276-1277-1278-1279-1280-1281-1282-1283-1284-1285-1286-1287-1288-1289-1290-1291-1292-1293-1294-1295-1296-1297-1298-1299-1300-1301-1302-1303-1304-1305-1306-1307-1308-1309-1310-1311-1312-1313-1314-1315-1316-1317-1318-1319-1320-1321-1322-1323-1324-1325-1326-1327-1328-1329-1330-1331-1332-1333-1334-1335-1336-1337-1338-1339-1340-1341-1342-1343-1344-1345-1346-1347-1348-1349-1350-1351-1352-1353-1354-1355-1356-1357-1358-1359-1360-1361-1362-1363-1364-1365-1366-1367-1368-1369-1370-1371-1372-1373-1374-1375-1376-1377-1378-1379-1380-1381-1382-1383-1384-1385-1386-1387-1388-1389-1390-1391-1392-1393-1394-1395-1396-1397-1398-1399-1400-1401-1402-1403-1404-1405-1406-1407-1408-1409-1410-1411-1412-1413-1414-1415-1416-1417-1418-1419-1420-1421-1422-1423-1424-1425-1426-1427-1428-1429-1430-1431-1432-1433-1434-1435-1436-1437-1438-1439-1440-1441-1442-1443-1444-1445-1446-1447-1448-1449-1450-1451-1452-1453-1454-1455-1456-1457-1458-1459-1460-1461-1462-1463-1464-1465-1466-1467-1468-1469-1470-1471-1472-1473-1474-1475-1476-1477-1478-1479-1480-1481-1482-1483-1484-1485-1486-1487-1488-1489-1490-1491-1492-1493-1494-1495-1496-1497-1498-1499-1500-1501-1502-1503-1504-1505-1506-1507-1508-1509-1510-1511-1512-1513-1514-1515-1516-1517-1518-1519-1520-1521-1522-1523-1524-1525-1526-1527-1528-1529-1530-1531-1532-1533-1534-1535-1536-1537-1538-1539-1540-1541-1542-1543-1544-1545-1546-1547-1548-1549-1550-1551-1552-1553-1554-1555-1556-1557-1558-1559-1560-1561-1562-1563-1564-1565-1566-1567-1568-1569-1570-1571-1572-1573-1574-1575-1576-1577-1578-1579-1580-1581-1582-1583-1584-1585-1586-1587-1588-1589-1590-1591-1592-1593-1594-1595-1596-1597-1598-1599-1600-1601-1602-1603-1604-1605-1606-1607-1608-1609-1610-1611-1612-1613-1614-1615-1616-1617-1618-1619-1620-1621-1622-1623-1624-1625-1626-1627-1628-1629-1630-1631-1632-1633-1634-1635-1636-1637-1638-1639-1640-1641-1642-1643-1644-1645-1646-1647-1648-1649-1650-1651-1652-1653-1654-1655-1656-1657-1658-1659-1660-1661-1662-1663-1664-1665-1666-1667-1668-1669-1670-1671-1672-1673-1674-1675-1676-1677-1678-1679-1680-1681-1682-1683-1684-1685-1686-1687-1688-1689-1690-1691-1692-1693-1694-1695-1696-1697-1698-1699-1700-1701-1702-1703-1704-1705-1706-1707-1708-1709-1710-1711-1712-1713-1714-1715-1716-1717-1718-1719-1720-1721-1722-1723-1724-1725-1726-1727-1728-1729-1730-1731-1732-1733-1734-1735-1736-1737-1738-1739-1740-1741-1742-1743-1744-1745-1746-1747-1748-1749-1750-1751-1752-1753-1754-1755-1756-1757-1758-1759-1760-1761-1762-1763-1764-1765-1766-1767-1768-1769-1770-1771-1772-1773-1774-1775-1776-1777-1778-1779-1780-1781-1782-1783-1784-1785-1786-1787-1788-1789-1790-1791-1792-1793-1794-1795-1796-1797-1798-1799-1800-1801-1802-1803-1804-1805-1806-1807-1808-1809-1810-1811-1812-1813-1814-1815-1816-1817-1818-1819-1820-1821-1822-1823-1824-1825-1826-1827-1828-1829-1830-1831-1832-1833-1834-1835-1836-1837-1838-1839-1840-1841-1842-1843-1844-1845-1846-1847-1848-1849-1850-1851-1852-1853-1854-1855-1856-1857-1858-1859-1860-1861-1862-1863-1864-1865-1866-1867-1868-1869-1870-1871-1872-1873-1874-1875-1876-1877-1878-1879-1880-1881-1882-1883-1884-1885-1886-1887-1888-1889-1890-1891-1892-1893-1894-1895-1896-1897-1898-1899-1900-1901-1902-1903-1904-1905-1906-1907-1908-1909-1910-1911-1912-1913-1914-1915-1916-1917-1918-1919-1920-1921-1922-1923-1924-1925-1926-1927-1928-1929-1930-1931-1932-1933-1934-1935-1936-1937-1938-1939-1940-1941-1942-1943-1944-1945-1946-1947-1948-1949-1950-1951-1952-1953-1954-1955-1956-1957-1958-1959-1960-1961-1962-1963-1964-1965-1966-1967-1968-1969-1970-1971-1972-1973-1974-1975-1976-1977-1978-1979-1980-1981-1982-1983-1984-1985-1986-1987-1988-1989-1990-1991-1992-1993-1994-1995-1996-1997-1998-1999-2000-2001-2002-2003-2004-2005-2006-2007-2008-2009-2010-2011-2012-2013-2014-2015-2016-2017-2018-2019-2020-2021-2022-2023-2024-2025-2026-2027-2028-2029-2030-2031-2032-2033-2034-2035-2036-2037-2038-2039-2040-2041-2042-2043-2044-2045-2046-2047-2048-2049-2050-2051-2052-2053-2054-2055-2056-2057-2058-2059-2060-2061-2062-2063-2064-2065-2066-2067-2068-2069-2070-2071-2072-2073-2074-2075-2076-2077-2078-2079-2080-2081-2082-2083-2084-2085-2086-2087-2088-2089-2090-2091-2092-2093-2094-2095-2096-2097-2098-2099-2100-2101-2102-2103-2104-2105-2106-2107-2108-2109-2110-2111-2112-2113-2114-2115-2116-2117-2118-2119-2120-2121-2122-2123-2124-2125-2126-2127-2128-2129-2130-2131-2132-2133-2134-2135-2136-2137-2138-2139-2140-2141-2142-2143-2144-2145-2146-2147-2148-2149-2150-2151-2152-2153-2154-2155-2156-2157-2158-2159-2160-2161-2162-2163-2164-2165-2166-2167-2168-2169-2170-2171-2172-2173-2174-2175-2176-2177-2178-2179-2180-2181-2182-2183-2184-2185-2186-2187-2188-2189-2190-2191-2192-2193-2194-2195-2196-2197-2198-2199-2200-2201-2202-2203-2204-2205-2206-2207-2208-2209-2210-2211-2212-2213-2214-2215-2216-2217-2218-2219-2220-2221-2222-2223-2224-2225-2226-2227-2228-2229-2230-2231-2232-2233-2234-2235-2236-2237-2238-2239-2240-2241-2242-2243-2244-2245-2246-2247-2248-2249-2250-2251-2252-2253-2254-2255-2256-2257-2258-2259-2260-2261-2262-2263-2264-2265-2266-2267-2268-2269-2270-2271-2272-2273-2274-2275-2276-2277-2278-2279-2280-2281-2282-2283-2284-2285-2286-2287-2288-2289-2290-2291-2292-2293-2294-2295-2296-2297-2298-2299-

Condition 11d Position, Size and Means of Enclosing All Consented Lightwells

DOCUMENTS PRECEDENT TO THESE
CONSULTANTS' AND INCLUDING SPECIFICATIONS
BEING CLARIFICATION OF INCONSISTENCIES
COMPOSITE FIGURED DIMENSIONS SHALL TAKE
PRECEDENCE TO SCALED DIMENSIONS.

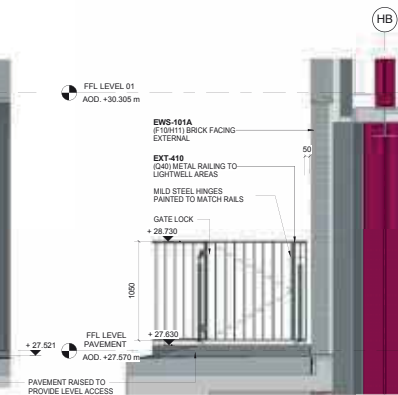
LIGHTWELL METAL RAILING FINISHES NOTES
1. ALL FRAMING AND BARS TO BE MILD
STEEL GALVANIZED AND PAINTED WITH
EXTERNAL GRADE CORROSION RESISTANT
PAINT.
RAL 7021



1 GA_LEVEL 0 - KEY PLAN_CHARLOTTE STREET 03
SCALE: 1: 20



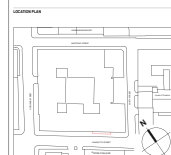
2 CHARLOTTE STREET - RAILING 08
SCALE: 1: 20



3 CHARLOTTE STREET - RAILING 09
SCALE: 1: 20

10. 2024/05/10 PLANNING CONDITION 11d
REV. QUANTITY DESCRIPTION
REVISIONS & COMMENTS

PROPOSED



Amey Fender Katsalidis
Amey Fender Katsalidis
T / +44 20 3772 7320
E / info@afkstudios.com
W / afkstudios.com
44-46 Scutcheon Street, London, EC2A 4HH

CLIENT
DEVELOPMENT LONDON MULTIPLEX

PROJECT
80 CHARLOTTE STREET

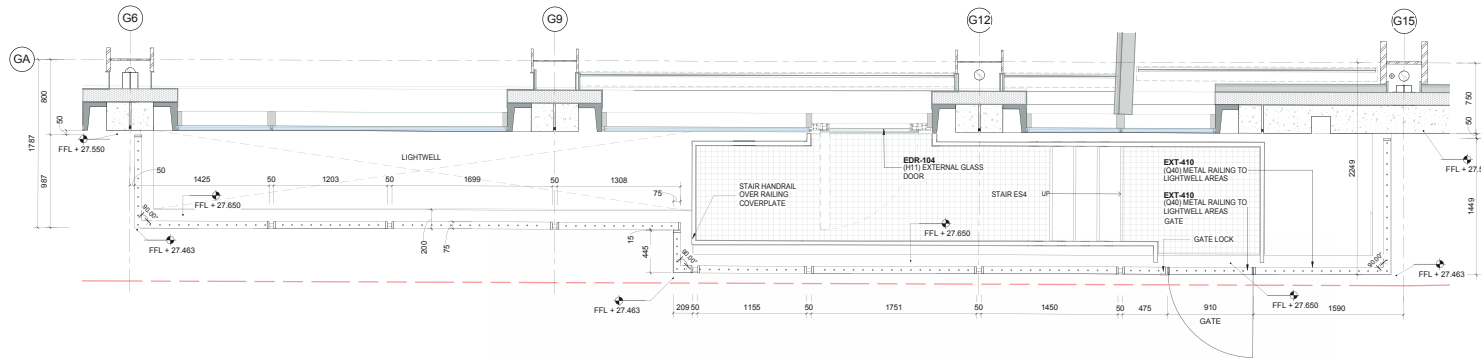
DRAWING TITLE
LIGHTWELL METAL RAILINGS PLANS
AND ELEVATIONS CHARLOTTE STREET

PROJECT NO.
44034
DATE
FOR PLANNING
1: 20/04/2024
DRAWN BY
A-07-P4981
CHECKED BY
00

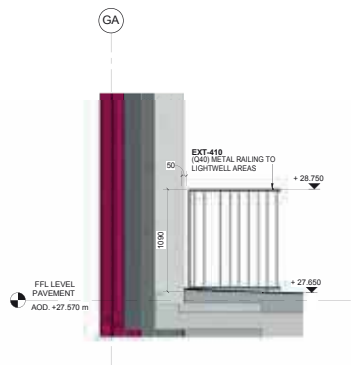
Condition 11d Position, Size and Means of Enclosing All Consented Lightwells

DOCUMENT PREPARED BY THE ARCHITECT FOR THE CLIENT'S USE ONLY. IT IS THE CLIENT'S RESPONSIBILITY TO ENSURE THAT THE INFORMATION PROVIDED IS ACCURATE AND COMPLETE. THE ARCHITECT ACCEPTS NO LIABILITY FOR ANY CONSEQUENCES ARISING FROM THE USE OF THIS DOCUMENT.

LIGHTWELL METAL RAILING FINISHES NOTES
1. ALL FRAMING AND BARS TO BE MILD STEEL GALVANIZED AND PAINTED WITH EXTERNAL GRADE CORROSION RESISTANT PAINT. RAL 7021



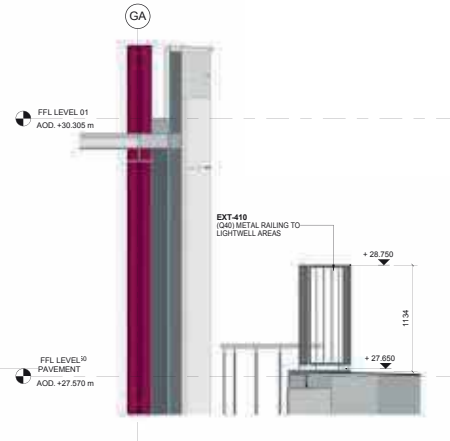
GA LEVEL 0 - KEY PLAN_HOWLAND ST - CAFE
SCALE: 1:20



HOWLAND STREET - RAILING 01
SCALE: 1:20



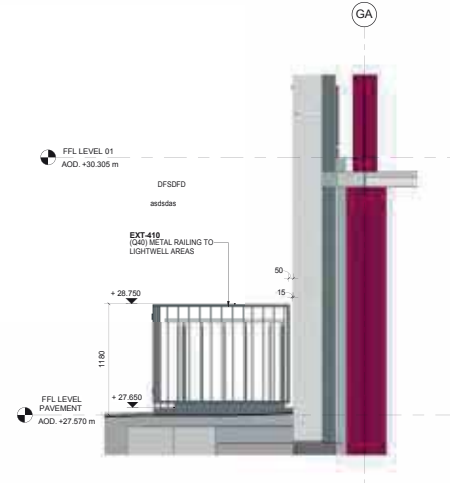
HOWLAND STREET - RAILING 02
SCALE: 1:20



HOWLAND STREET - RAILING 03
SCALE: 1:20



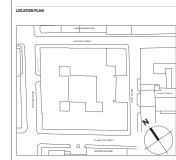
HOWLAND STREET - RAILING 04
SCALE: 1:20



HOWLAND STREET - RAILING 05
SCALE: 1:20

RE: 20240118 PLANNING CONSULTATION 11d
REV: 000001 DESCRIPTION
DESIGNER: A. KATSAIDIS
GT: PY
DRAWN BY: CHECK BY

PROPOSED



Amey Fender Katsalidis
Amey Fender Katsalidis
T / +44 20 3772 7520
E / info@afkstudio.com
W / afkstudio.com
44-46 Scruton Street, London, EC2A 4HH
CLIENT:
DEPARTMENT OF TRANSPORTS MULTIPLEX

PROJECT
80 CHARLOTTE STREET

DRAWING TITLE
LIGHTWELL METAL RAILINGS PLANS
AND ELEVATIONS HOWLAND STREET

PROJECT NO:
44034
DATE:
FOR PLANNING
1:20@A0
DRAWN BY:
A-07-P4984
REVIEWED:
00

THESE TERMS AND CONDITIONS OF PURCHASE
ARE A PART OF THE ORDER. BY ORDERING
YOU AGREE TO THESE TERMS AND CONDITIONS.
THESE TERMS AND CONDITIONS SHALL TAKE
PRECEDENCE TO ANY DISCREPANCIES.

[illegible]

The technical drawing illustrates a gate assembly. At the top left, a circular component labeled 'GA' is shown. Below it, a vertical section of the gate is depicted. To the right, a horizontal section of the gate is shown, featuring a grid-like pattern. This section is labeled 'EST-60' and 'STEEL MESH BARRIER'. A curved arrow indicates the gate's movement. On the far left, there is a small icon representing a leveling mechanism, labeled 'PRL LEVELING' and '600 - 975 mm'.

1 HOWLAND STREET - RAILING 00
SCALE 1" = 20'

PROPOSED

Arney
Fender
Katsalidis

Spring Science Publishing
T +44 (0) 1773 732200
E info@springer.com
W springer.com
Small business buyers: contact books@springer.com

DERWENT LONDON MULTIPLEX

90 CHARLOTTE STREET

LIGHTWELL METAL RAILINGS, PLANS
AND ELEVATIONS HOMLAND STIR

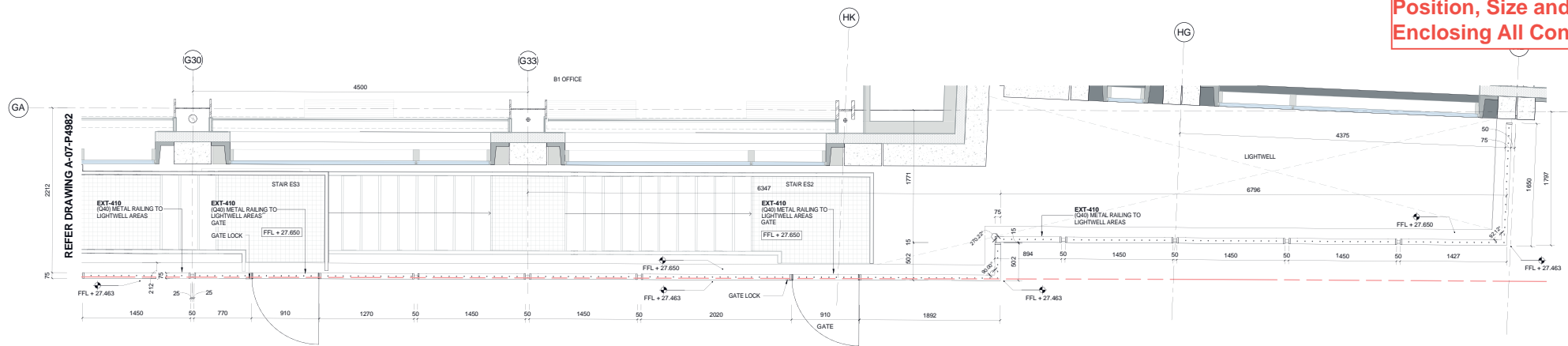
04/03/2014

FD-36 (Rev. 5-22-64)	4-22-64
FILED IN	66-1000
A-07-P4852	00

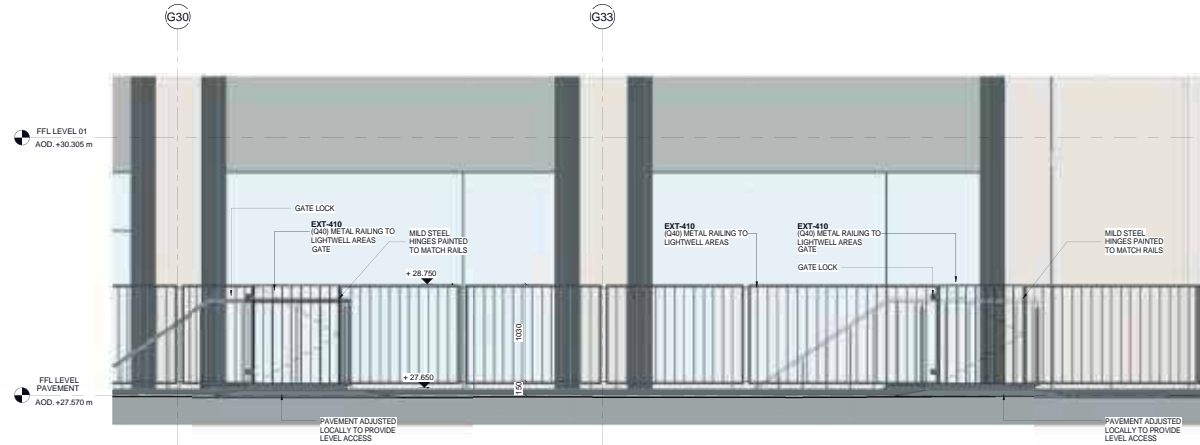
Condition 11d Position, Size and Means of Enclosing All Consented Lightwells

CHECK AND VERIFY ALL DIMENSIONS PRIOR TO COMMENCEMENT OF WORK. THIS DRAWING SHALL BE READ IN CONJUNCTION WITH ALL OTHER CONTRACT DOCUMENTS INCLUDING THOSE BY OTHER CONSULTANTS AND INCLUDING SPECIFICATIONS. SEEK CLARIFICATION OF INCONSISTENCIES. COMPLETES FINISHED DIMENSIONS SHALL TAKE PRECEDENCE TO SCALED DIMENSIONS.

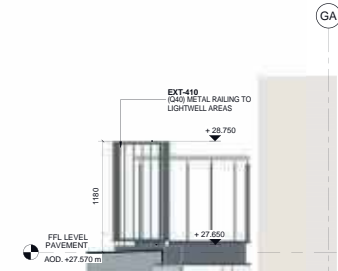
LIGHTWELL METAL RAILING FINISHES NOTES
1. ALL FRAMING AND BARS TO BE MILD STEEL GALVANIZED AND PAINTED WITH EXTERNAL GRADE CORROSION RESISTANT PAINT.
RAIL 7021



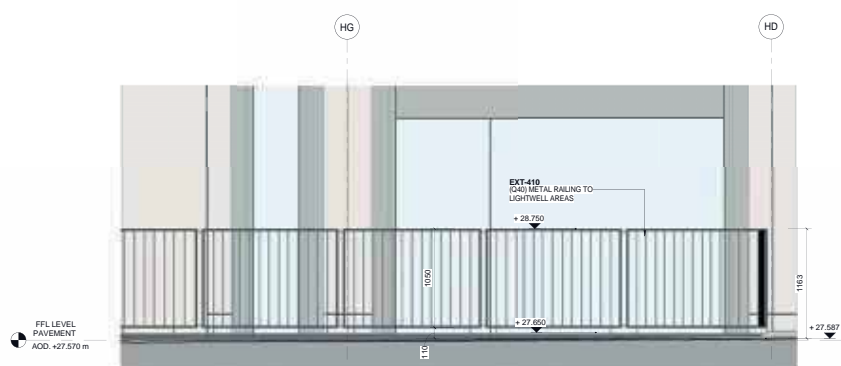
1 GA LEVEL 0 - KEY PLAN, HOWLAND STREET - OFFICE 2
SCALE: 1:20



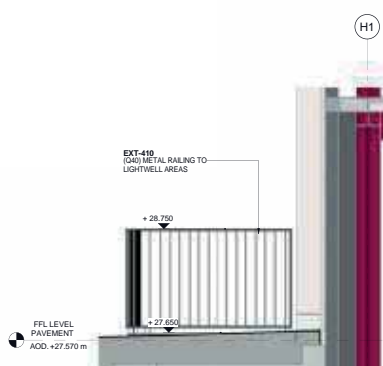
2 HOWLAND STREET - RAILING 09
SCALE: 1:20



3 HOWLAND ST - RAILING 010
SCALE: 1:20



4 HOWLAND ST - RAILING 011
SCALE: 1:20



5 HOWLAND ST - RAILING 012
SCALE: 1:20



80 CHARLOTTE STREET PLANNING LOCATION 116
REV DESCRIPTION
REVISIONS & COMMENTS



Amey Fender Katsalidis
Amey Fender Katsalidis
T / +44 20 3772 7500
E / info@afkstudios.com
W / afkstudios.com
44-46 Scruton Street, London, EC2A 4HH

CLIENT:
DEPARTMENT OF MULTIPLEX

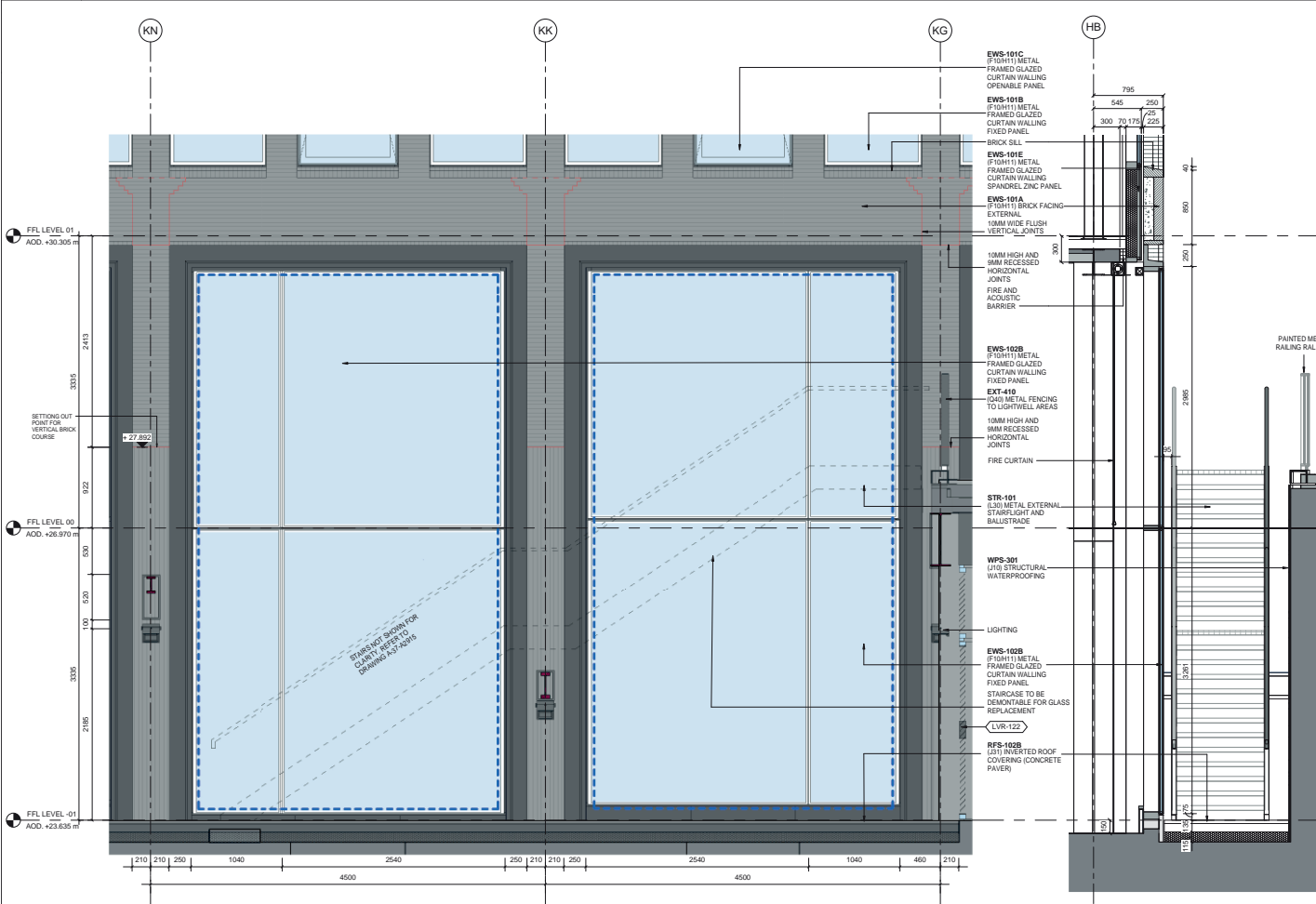
PROJECT
80 CHARLOTTE STREET

DRAWING TITLE
LIGHTWELL METAL RAILINGS PLANS
AND ELEVATIONS HOWLAND STREET

PROJECT NO:
44034
DATE:
FOR PLANNING 1:2008 AD
DRAWING NO:
A-07-P4983
REVISION:
00

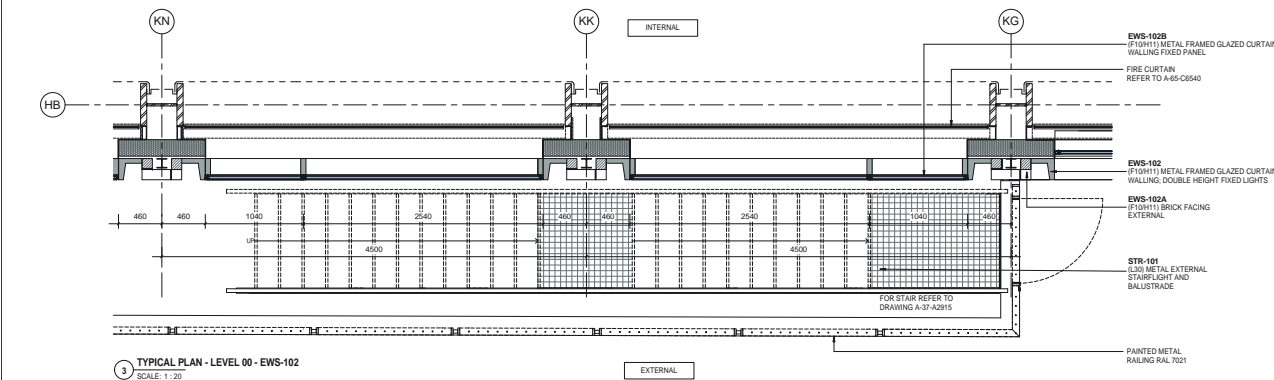
Condition 11d Position, Size and Means of Enclosing All Consented Lightwells

CONSULTANTS AND INCLUDING SPECIFICATIONS.
BEEN CLARIFICATION OF INCONSISTENCIES
CONFLICTS, THE DRAWING SHALL TAKE
PRECEDENCE TO SCALED DIMENSIONS.

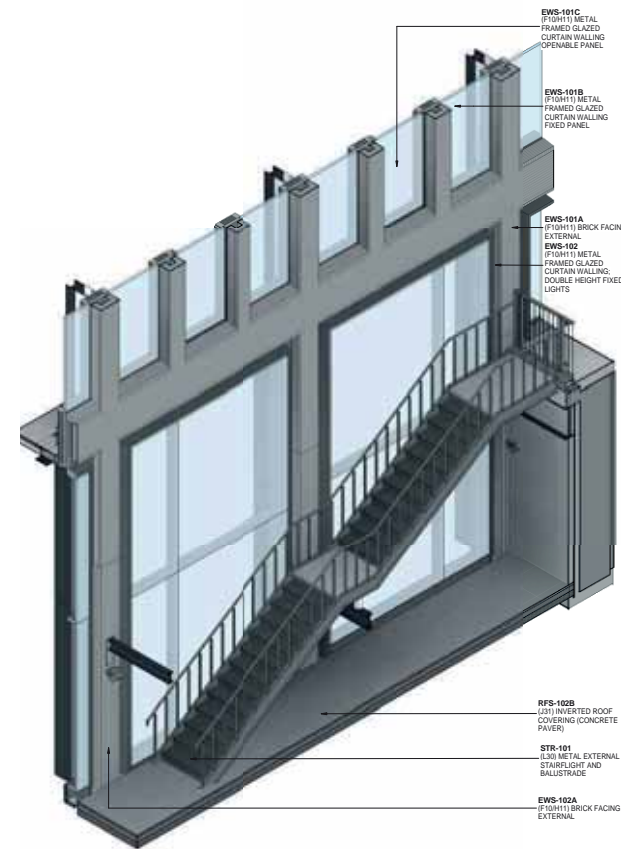


1 TYPICAL ELEVATION - EWS-102
SCALE: 1 : 20

2 TYPICAL SECTION - EWS 102
SCALE: 1 : 20

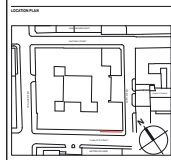


3 TYPICAL PLAN - LEVEL 00 - EWS-102
SCALE: 1 : 20



4 3D VIEW EWS - 102
SCALE: NTS

© 2023/24 DRAWING CONDITION 11d
REV COMPANY DESCRIPTION
ISSUED BY COMPANY



Amey Fender Katsalidis
Amey Fender Katsalidis
T / +44 20 3772 7320
E / info@afkstudios.com
W / afkstudios.com
44-46 Scruton Street, London, EC2A 4HH

CLIENT:
DERWENT LONDON MULTIPLEX

PROJECT
80 CHARLOTTE STREET

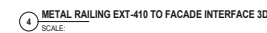
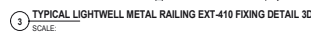
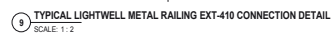
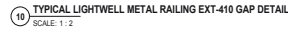
DRAWING TITLE
EWS-102
Typical Bay

PROJECT NO.
44034
DATE
FOR PLANNING
1:20/24
DRAWING NO.
A-07-P3229
00

DOCUMENTS INCLUDING THOSE BY OTHER CONSULTANTS, AND INCLUDING SPECIFICATIONS, SEEK CLARIFICATION OF INCONSISTENCIES/ CONFLICTS. FIGURED DIMENSIONS SHALL TAKE PRECEDENCE TO SCALED DIMENSIONS.

LIGHTWELL METAL RAILING FINISHES NOTES

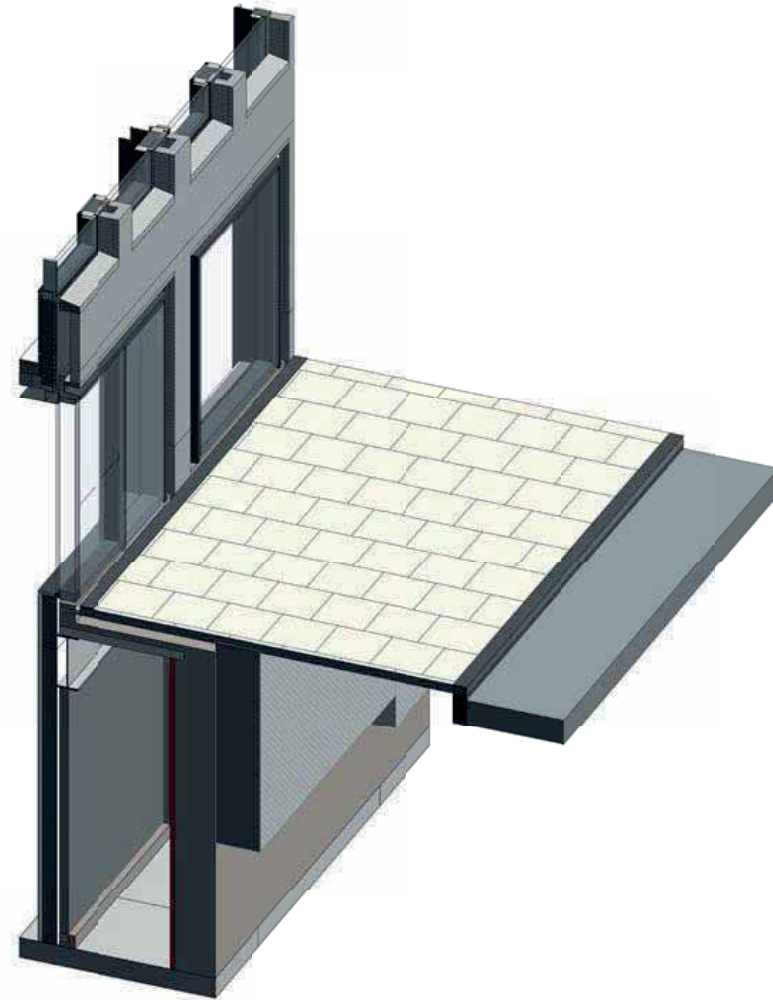
1. ALL FRAMING AND BARS TO BE MILD STEEL GALVANIZED AND PAINTED WITH EXTERNAL GRADE CORROSION RESISTANT PAINT.
RAL 7021



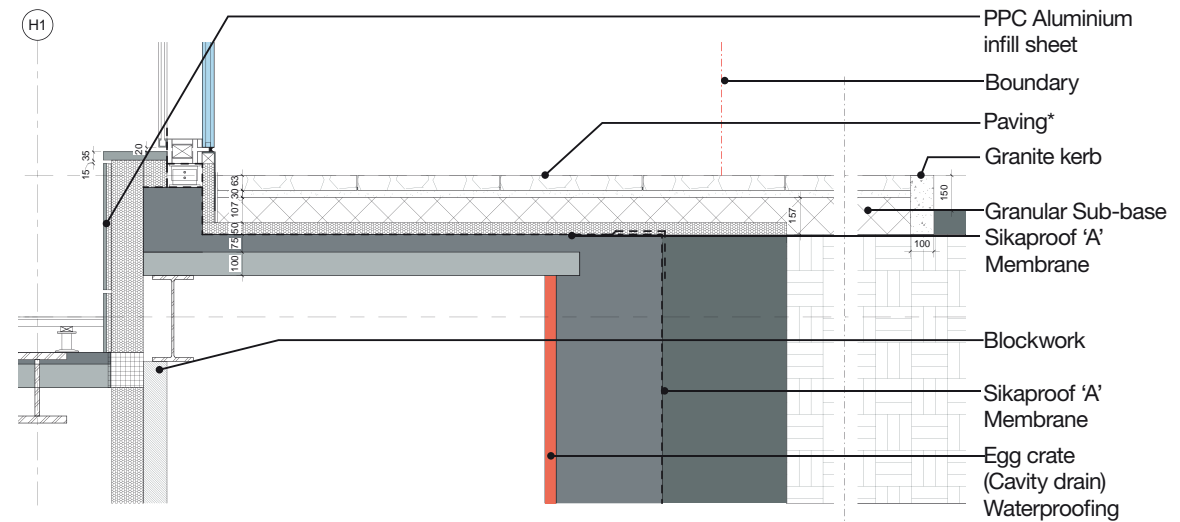
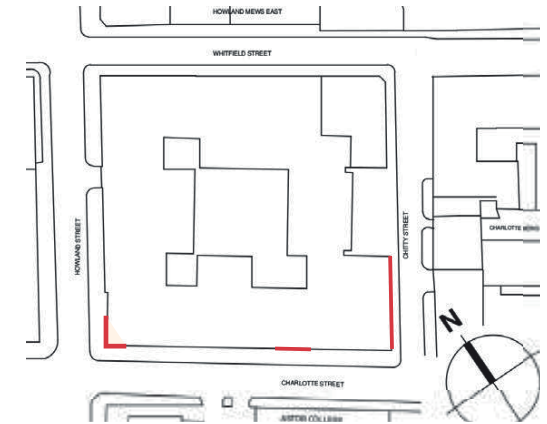
80 Charlotte Street

Paved Over Lightwell

Condition 11d
Position, Size and Means of
Enclosing All Consented Lightwells



Axo - Building to footpath



*Concrete paving slabs laid with 150mm staggered bond

Detail Section - Building to footpath

65, 67/69 Whitfield Street, London

Existing Railings

Condition 11d
Position, Size and Means of
Enclosing All Consented Lightwells



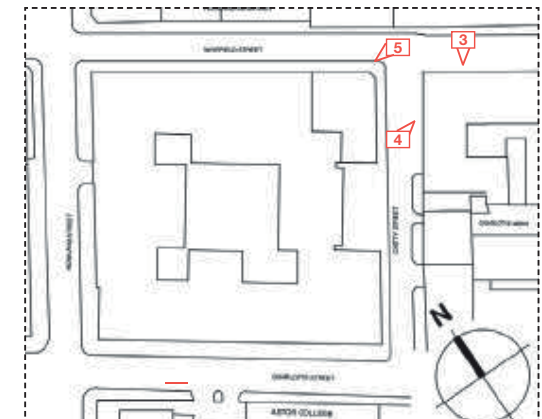
3



4



5



65 Whitfield Street, London

Proposed Refurbished Railings

Condition 11d
Position, Size and Means of
Enclosing All Consented Lightwells

Lightwell Metal Railing Finishes

All framing and bars to be mild steel
galvanised and painted with external grade
corrosion resistant paint
RAI 7021



65 Whitfield Street

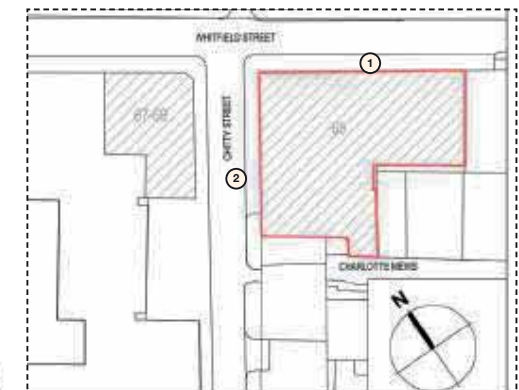
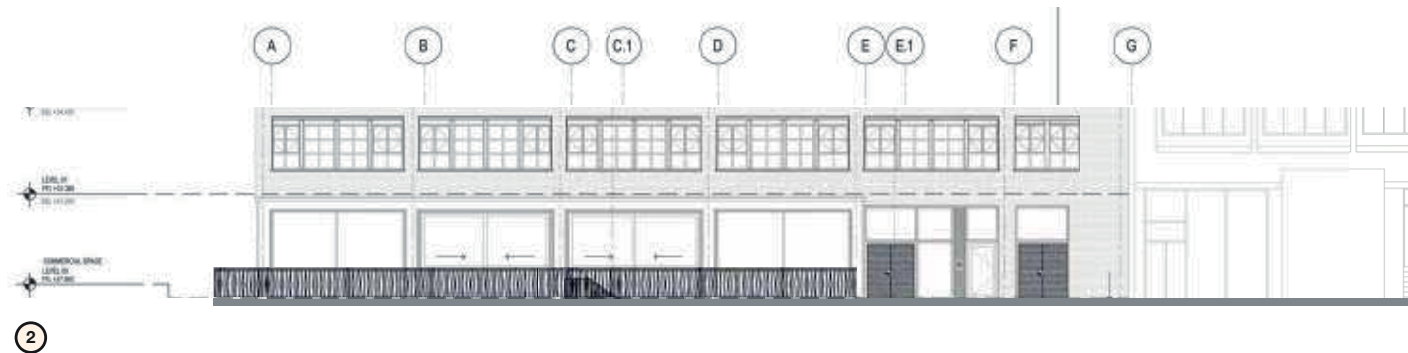
Existing Railings Refurbished



Enlarged Elevation

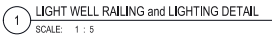
Existing Railings Refurbished

Condition 11d
Position, Size and Means of
Enclosing All Consented Lightwells



FOR
STR

MISSIONS



DRAWING NO.	REVISION
A-07-P8720	00