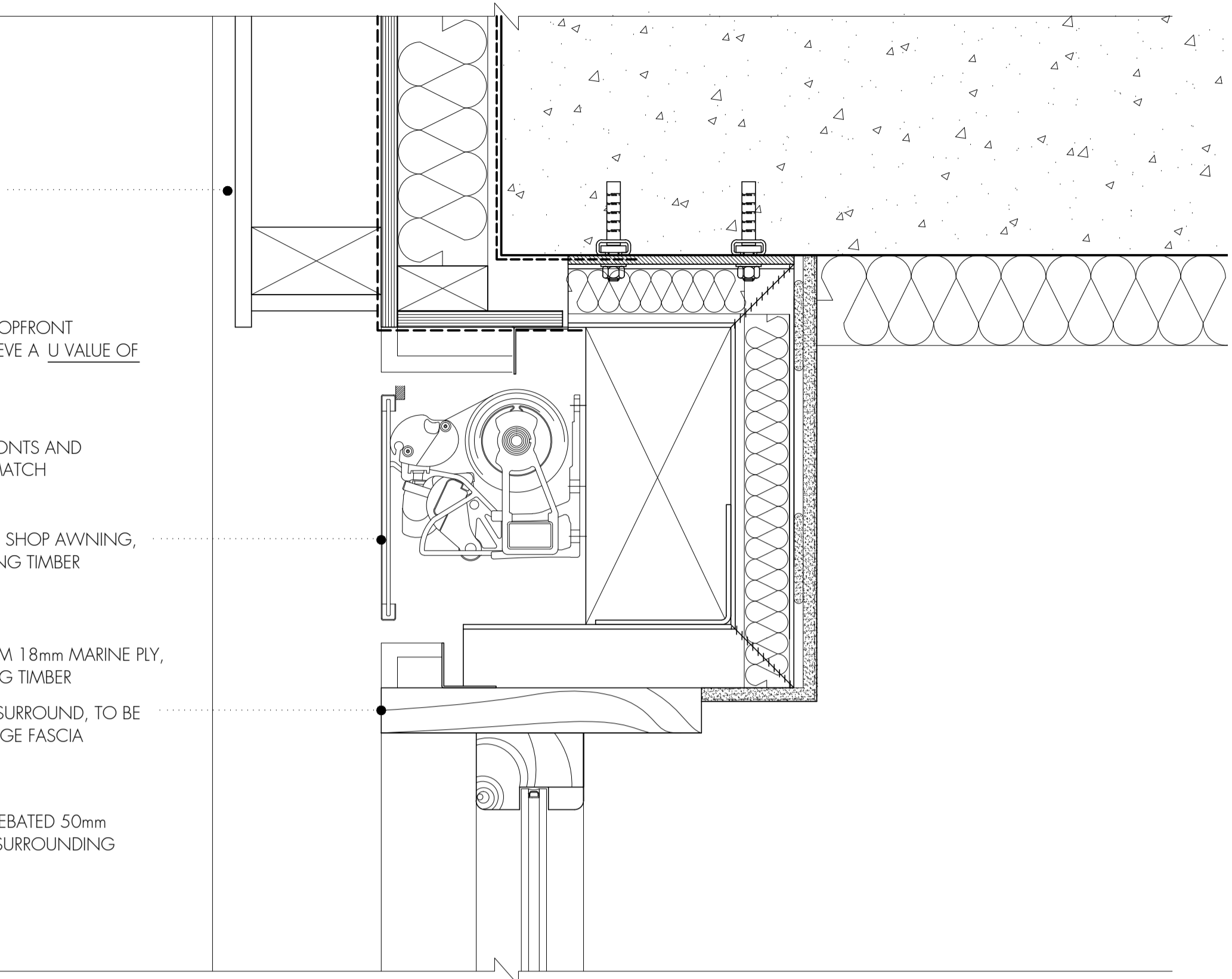


TYPICAL SHOPFRONT DETAIL - PLAN
Scale 1:5

- PAINTED MARINE PLY SIGNAGE FASCIA FIXED BACK TO R.C. SLAB EDGE
- DOUBLE GLAZED SAFETY GLASS SHOPFRONT WINDOW. ALL GLAZING TO ACHIEVE A U VALUE OF 1.4W/M2
- HARDWOOD JOINERY TO SHOPFRONTS AND ENTRANCE DOORS, PAINTED TO MATCH SURROUNDING TIMBER
- 2mm ALUMINIUM FASCIA PLATE TO SHOP AWNING, PAINTED TO MATCH SURROUNDING TIMBER
- SHOPFRONTS CONSTRUCTED FROM 18mm MARINE PLY, PAINTED TO MATCH SURROUNDING TIMBER
- PAINTED TIMBER SHOP WINDOW SURROUND, TO BE PAINTED SAME COLOUR AS SIGNAGE FASCIA
- 'PILASTERS' CONSTRUCTED FROM REBATED 50mm MARINE PLY, PAINTED TO MATCH SURROUNDING TIMBER



- DOUBLE GLAZED SAFETY GLASS SHOP FRONT WINDOWS. ALL GLAZING TO ACHIEVE A U VALUE OF 1.4W/M2
- TIMBER SILL DRIP DETAIL TO BASE OF GLAZING, PAINTED TO MATCH
- STALL RISER CONSTRUCTED FROM ENGINEERING BRICKWORK
- MARINE PLY STALL RISER AND SKIRTING BOARDS, PAINTED TO MATCH SURROUNDING TIMBER
- LEVEL ACCESS TO COMMERCIAL UNITS
- TANKING MEMBRANE
- DPC
- DPM LAPPED WITH DPC

SECTION AA DETAILS
Scale 1:5

Do not scale off this drawing.

All indicated dimensions to be checked and verified on site by the Main Contractor before commencement of any fabrication drawings or work whatsoever on site.

Report all discrepancies to the Architect immediately.
This drawing is to be read in conjunction with all the related Architect's and Structural Engineer's drawings, details and all relevant information.

NOTES

1. MARINE PLY TO BE USED FOR SIGNAGE FASCIA, 'PILASTERS', STALL RISERS AND SKIRTING BOARDS
2. HARDWOOD JOINERY TO SHOPFRONT WINDOWS, ENTRANCE DOORS AND LOUVRES
3. ALL TIMBER TO A COMMERCIAL UNIT PAINTED IN SAME COLOUR
4. ALUMINIUM AWNING FASCIA PLATE TO BE PAINTED TO MATCH SURROUNDING TIMBER
5. SIGNAGE LOCATION SHOWN INDICATIVELY, TENANTS TO SUBMIT FURTHER PLANNING APPLICATION
6. STREET NUMBER LOCATED AT THE BOTTOM LEFT CORNER OF SIGNAGE FASCIA BOARD

rev.	rev. date	rev. description



4 Amwell Street, London, EC1R 1UG T: 020 7713 7070 F: 020 7713 7071 E: tasou@tasou.co.uk		
project		
Swain's Lane London N6 6QX		
drwg title		
Proposed Shop Front Elevation and Details		
date	drwg no.	rev.
Sept 2018	SF-002	
scale @ A1	job no.	
1:5	1658	