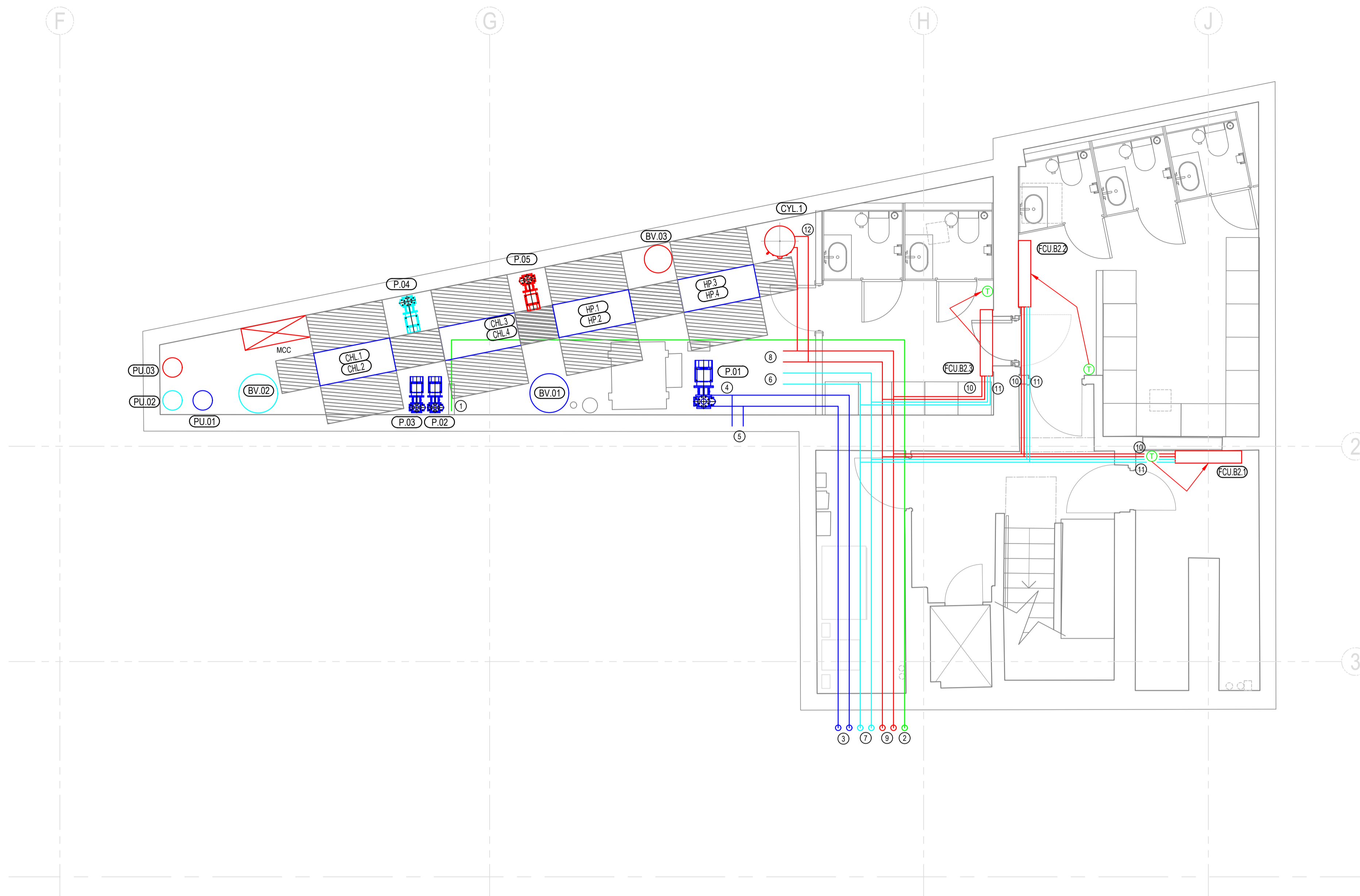


Do Not Scale.  
All Figured Dimensions To Be Checked On Site Prior To Construction.  
All Copyright Reserved.



**GENERAL NOTES:**

1. ALL SERVICES/ROUTES THROUGHOUT BUILDING TO BE FULLY CO-ORDINATED ON SITE.
2. DRAWING TO BE READ IN CONJUNCTION WITH MECHANICAL INSTALLATION SPECIFICATION AND ALL OTHER RELEVANT DRAWINGS.

**LEGEND:**

- ① 500G GAS CONNECTS TO EXISTING LANDLORD SUPPLY C/W IV
- ② 500G GAS RISE TO ABOVE
- ③ 1000G CONDENSE F&R FROM ABOVE DROPS TO LOW LEVEL
- ④ 2NO 1000 CONDENSE F&R JOINS TOGETHER
- ⑤ 1000G CONDENSE F&R CONNECTS TO EXISTING LANDLORD SUPPLY
- ⑥ 800 CHW F&R FROM PLANTROOM
- ⑦ 800 CHW F&R RISE TO ABOVE
- ⑧ 800 LTHW F&R FROM PLANTROOM
- ⑨ 800 LTHW F&R RISE TO ABOVE
- ⑩ 220 LTHW F&R TO FCU
- ⑪ 220 CHW F&R TO FCU
- ⑫ 320 LTHW F&R TO CYLINDER

**PLANT SCHEDULE: BASEMENT - 2**

HP.1, HP.2, HP.3, HP.4  
WATER COOLED HEAT PUMP FOR PRODUCTION OF LTHW AT 65/55 °C  
CARRIER - 91WQ-04SA Water to Water Scroll Heat Machine  
SIZE 1044 X 600 X 901  
HEATING CAPACITY 61.7 KW EACH  
POWER SUPPLY 3Ph, 17.08 kW EACH

4No UNITS MOUNTED AS 2No DOUBLE STACK UNITS

CHL.1, CHL.2, CHL.3, CHL.4  
WATER COOLED CHILLER FOR PRODUCTION OF CHW @ 6/12 °C  
CARRIER - 30WQ-04SA Water to Water Scroll Chiller  
SIZE 1044 X 600 X 901  
COOLING CAPACITY 40.4KW EACH  
POWER SUPPLY 3Ph, 11.97kW EACH

4No UNITS MOUNTED AS 2No DOUBLE STACK UNITS

BV.01 - CONDENSE WATER BUFFER VESSEL

BV.02 - CHW BUFFER VESSEL, CAPACITY 500L

BV.03 - LTHW BUFFER VESSEL, CAPACITY 500L

PU.01 - CONDENSE WATER PRESSURISATION UNIT AND EXPANSION VESSEL

PU.02 - CHW PRESSURISATION UNIT AND EXPANSION VESSEL CAPACITY 50L

PU.03 - LTHW PRESSURISATION UNIT AND EXPANSION VESSEL CAPACITY 50L

P.1 - CONDENSE WATER PRIMARY CIRCUIT PUMP

TWIN HEAD, RUN AND STANDBY, DUTY 8.6 l/s @ 300kPa

P.2 - CONDENSE WATER SECONDARY CIRCUIT PUMP SERVING CHILLERS

TWIN HEAD, RUN AND STANDBY, DUTY 10.04 l/s @ 150kPa

P.3 - CONDENSE WATER SECONDARY CIRCUIT PUMP SERVING HEAT PUMPS

TWIN HEAD, RUN AND STANDBY, DUTY 7.16 l/s @ 150kPa

P.4 - CHW PUMP

TWIN HEAD, RUN AND STANDBY, DUTY 6.44 l/s @ 150kPa

P.5 - LTHW PUMP

TWIN HEAD, RUN AND STANDBY, DUTY 6.00 l/s @ 150kPa

FCU.B2.1, FCU.B2.2, FCU.B2.3 - QUARTZ CWM 55, WALL MOUNTED, C/W HARD WIRED

CONTROLLER

SIZE: 1200x223x350h

WEIGHT: 27 kg

ELECTRICAL SUPPLY: 1Ph SPUR

|     |              |    |            |
|-----|--------------|----|------------|
| A   | TENDER ISSUE | HN | 28/09/2018 |
| REV | DETAILS      | BY | APP DATE   |

CLIENT: **STREAT MARKETS LTD**

PROJECT: **CENTRE POINT, LINK BUILD. W1**

DRAWING TITLE: **BASEMENT LEVEL -2  
HEATING, COOLING & GAS**

|                          |              |                     |
|--------------------------|--------------|---------------------|
| DRAWN BY: <b>H.NISIC</b> | APPROVED BY: | DATE: <b>SEP'18</b> |
|--------------------------|--------------|---------------------|

|                           |                          |                    |
|---------------------------|--------------------------|--------------------|
| PROJECT No.: <b>L2171</b> | DRAWING No.: <b>M016</b> | SCALE: <b>1:50</b> |
|---------------------------|--------------------------|--------------------|



**LEHDNING SERVICES DESIGN LTD**  
Unit 10, 10 Redlands Crescent, Laine, Co. Antrim, N Ireland, BT40 1FF. Tel: +44(0) 2838 271 123.  
Global House, Ashley Avenue, Epsom, London, KT18 5AD. Tel: +44(0) 1372 253 207.  
Web: www.lehdning.co.uk Email: info@lehdning.co.uk