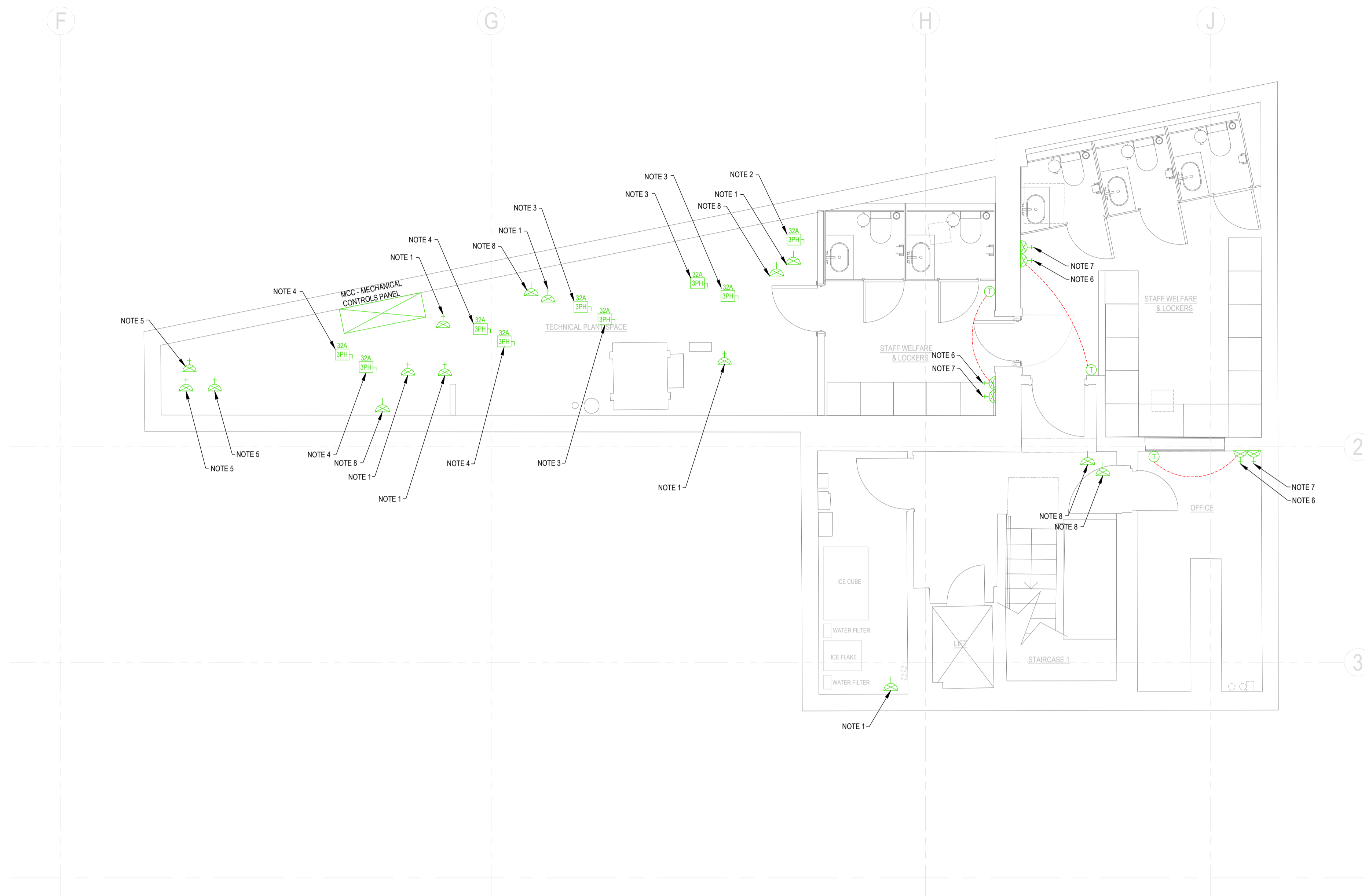


Do Not Scale.
All Figured Dimensions To Be Checked On Site Prior To Construction.
All Copyright Reserved.



GENERAL NOTES

DRAWING TO BE READ IN CONJUNCTION WITH THE INSTALLATION SPECIFICATION AND ALL OTHER RELEVANT DRAWINGS.

ALL WIRING AND ELECTRICAL WORKS TO BE INSTALLED IN ACCORDANCE WITH BS7671 THE IET WIRING REGULATIONS 18th EDITION & LATEST AMENDMENTS.

ALL CABLING AND CONTAINMENT TO BE LSOH TO BS EN 50267-2-1, BASED MARKED AND BS EN 50525-3-11 COMPLIANT.

ALL EARTHING AND BONDING SHALL BE PROVIDED IN ACCORDANCE WITH BS7671 THE IET WIRING REGULATIONS 18th EDITION & LATEST AMENDMENTS.

ALL WIREWAYS TO BE CONCEALED WITHIN THE BUILDING FABRIC. ALSO ALL EQUIPMENT AND ACCESSORIES TO BE RECESSED IN WALLS IN A FLUSH INSTALLATION. UNDER NO CIRCUMSTANCES WILL SURFACE WIRING BE ACCEPTED.

CONTROLS THAT NEED CLOSE VISION ARE LOCATED BETWEEN 1200mm AND 1400mm AFFL SO THAT READINGS MAY BE TAKEN BY A PERSON SITTING OR STANDING (WITH THERMOSTATS AT THE TOP OF THE RANGE).

THE OPERATION OF SWITCHES, OUTLETS AND CONTROLS DOES NOT REQUIRE THE SIMULTANEOUS USE OF BOTH HANDS, EXCEPT WHERE THIS MODE OF OPERATION IS NECESSARY FOR SAFETY REASONS.

SWITCHED SOCKET OUTLETS INDICATE WHETHER THEY ARE 'ON'.

MAINS AND CIRCUIT ISOLATOR SWITCHES CLEARLY INDICATE THAT THEY ARE 'ON' OR 'OFF'.

EQUIPMENT ON COLUMNS TO BE FULLY FIRE PROTECTED BY BUILDER.

ALL SERVICES/ROUTES THROUGHOUT BUILDING TO BE FULLY CO-ORDINATED ON SITE PRIOR TO INSTALLATION.

SPECIFIC NOTES

1. POWER SUPPLY FOR PUMP.
2. POWER SUPPLY FOR IMMERSION HEATER.
3. POWER SUPPLY FOR HEAT PUMP.
4. POWER SUPPLY FOR CHILLER.
5. POWER SUPPLY FOR PRESSURISATION UNIT.
6. SPUR UNIT FOR WALL MOUNTED AC UNIT.
7. POWER SUPPLY FOR CONDENSATE PUMP.
8. POWER SUPPLY FOR SOLENOID VALVE.

LEGEND

- DOUBLE SWITCHED SOCKET OUTLET
- SWITCHED FUSED SPUR UNIT
- UNSWITCHED FUSED SPUR UNIT
- COMMANDO TYPE SOCKET OUTLET
- ISOLATOR UNIT - RATING AND PHASE AS INDICATED
- ELECTRICAL DISTRIBUTION BOARD / PANEL
- THERMOSTAT CONTROLLER
- AC CONTROLLER
- OVERDOOR HEATER CONTROLLER

A	TENDER ISSUE	MK	01/10/2018
REV	DETAILS	BY	APP DATE

CLIENT: **STREET MARKETS LTD**

PROJECT: **CENTRE POINT, LINK BLDG, W1**
DRAWING TITLE: **BASEMENT LEVEL -2**
MECHANICAL SERVICES WIRING

DRAWN BY: M.KNOTT	APPROVED BY:	DATE: SEP'18
PROJECT No.: L2171	DRAWING No.: E016	SCALE: 1:50



LEHDING SERVICES DESIGN LTD
Unit 10, 10 Redlands Crescent, Larne, Co. Antrim, N.Ireland. BT40 1FF. Tel: +44(0) 2828 277 123.
Global House, Ashley Avenue, Epsom, London. KT18 5AD. Tel: +44(0) 1372 253 207.
Web: www.lehding.co.uk Email: info@lehding.co.uk