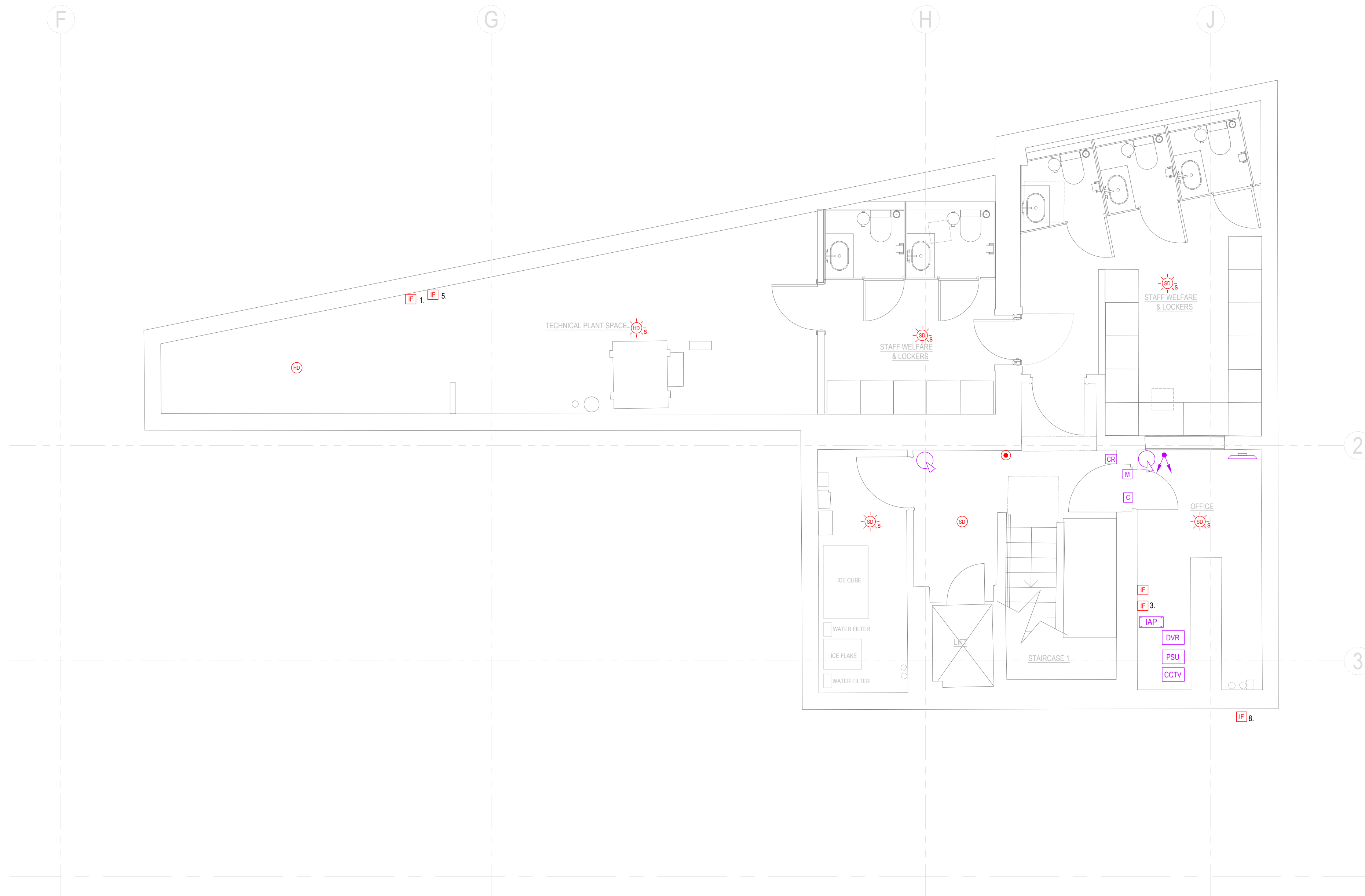


Do Not Scale.  
All Figured Dimensions To Be Checked On Site Prior To Construction.  
All Copyright Reserved.



**GENERAL NOTES**

DRAWING TO BE READ IN CONJUNCTION WITH THE INSTALLATION SPECIFICATION AND ALL OTHER RELEVANT DRAWINGS.

FIRE ALARM SYSTEM TO COMPLY WITH BS5839 PART 1:2017

ALL WIREWAYS TO BE CONCEALED WITHIN THE BUILDING FABRIC, EXCEPT IN RISERS, CEILING VOIDS AND FLOOR VOIDS.

ALL EQUIPMENT AND ACCESSORIES TO BE RECESSED IN WALLS IN A FLUSH INSTALLATION, UNDER NO CIRCUMSTANCES WILL SURFACE WIRING BE ACCEPTED.

ALL FIRE ALARM CABLES SHALL BE PH120 ENHANCED GRADE CABLE; FIRE RETARDANT, SELF EXTINGUISHING.

WIRING SYSTEMS TO BE SUPPORTED BY FIRE-RESISTANT FIXINGS AND FASTENINGS.

CABLE TO BE CLIPPED TO SOFFIT UNLESS OTHERWISE INDICATED.

AT EACH DETECTOR, CABLE TO BE ADEQUATELY SUPPORTED BETWEEN SOFFIT AND CEILING LEVEL, CABLE TO TERMINATE INTO A BESA BOX AT CEILING LEVEL.

FOR WALL MOUNTED DEVICES CABLE TO TERMINATE ABOVE CEILING INTO 20mm GALVANISED CONDUIT RECESSED INTO BUILDING FABRIC.

INTRUDER ALARM SYSTEM TO BE INSTALLED TO THE STANDARDS REQUIRED BY THE NATIONAL SECURITY INSPECTORATE (NSI) TO NACOSS GOLD STANDARD.

THE SYSTEM SHALL BE INSTALLED TO COMPLY WITH ACPO 2000, BS EN 50131 & BS 8243.

CONTRACTOR TO FIT DATA PROTECTION ACT COMPLIANT CCTV COVERAGE SIGN AT FRONT ENTRANCE.

DEVICES ON COLUMNS TO BE FULLY FIRE PROTECTED BY BUILDER

ALL SERVICES/ROUTES THROUGHOUT BUILDING TO BE FULLY CO-ORDINATED ON SITE PRIOR TO INSTALLATION.

**NOTE:**  
FIRE ALARM TO BE INTERFACED WITH, BUT NOT LIMITED TO THE FOLLOWING:

- MECHANICAL PLANT
- ANSUL FIRE SUPPRESSION SYSTEMS
- MUSIC / PLAYER / AUDIO VISUAL SYSTEMS. AUDIO TO 0%
- LIGHTING TO 100%
- GAS SUPPLY SHUTDOWN
- DB KITCHEN - COOKING CONTACTOR OPERATED SHUTDOWN
- WHERE APPLICABLE: HOLD OPEN DOORS FAIL CLOSED. AUTOMATIC DOORS TO EXTERNAL FIRE EXIT TO POWER OPEN
- SPRINKLER SYSTEM
- LANDLORD FIRE ALARM SYSTEM

**NOTE:**  
FINITE LOCATION OF EQUIPMENT TO BE COORDINATED.

**LEGEND:**

- BREAKGLASS MANUAL CALL POINT
- GAS EMERGENCY SHUTOFF BUTTON - COLOURED YELLOW. (ALSO NOTED ON MECHANICAL SERVICES WIRING DRAWINGS)
- SMOKE DETECTOR
- COMBINED SMOKE DETECTOR / SOUNDER
- COMBINED SMOKE DETECTOR / SOUNDER / STROBE
- HEAT DETECTOR
- COMBINED HEAT DETECTOR / SOUNDER
- COMBINED HEAT DETECTOR / SOUNDER / STROBE
- SOUNDER / STROBE - WALL MOUNTED
- VOID MOUNTED DETECTOR
- INTERFACE UNIT
- FIRE ALARM PANEL - \*FINITE LOCATION TO BE DETERMINED ON SITE AND IN COORDINATION WITH FIRE OFFICER.
- CARBON MONOXIDE DETECTOR - INTERFACED WITH GAS SHUT OFF AND VENTILATION SYSTEMS.

**INTRUDER SYSTEM**

- DOOR CONTACT
- PIR SENSOR
- INTRUDER ALARM PANEL
- KEYPAD
- GLASS BREAK DETECTOR
- PANIC ALARM BUTTON
- EMERGENCY BREAK GLASS
- EGRESS BUTTON
- SOUNDER

**ACCESS**

- ACCESS CONTROL ENTRY UNIT - CARD / FOB READER / KEYPAD.
- MAGLOCK / ELECTRIC STRIKE LOCK
- MAGNETIC DOOR HOLD
- INTERCOM SYSTEM

**CCTV - LOCATIONS INDICATIVE: EQUIPMENT TO BE POSITIONED ON SITE BY SPECIALIST INSTALLER FOR OPTIMUM COVERAGE.**

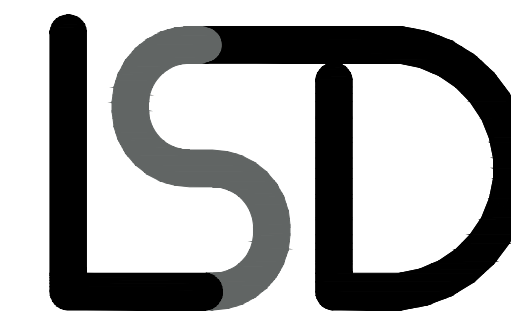
- CCTV CAMERA - INTERIOR
- CCTV CAMERA - EXTERIOR IP66 RATED
- DIGITAL RECORDER
- POWER SUPPLY
- MONITOR
- CCTV HEADEND - LOCATED WITHIN COMMS CABINET

A	TENDER ISSUE	MK	01/10/2018
REV	DETAILS	BY	APP DATE

CLIENT: **STREET MARKETS LTD**

PROJECT: **CENTRE POINT, LINK BLDG, W1**  
DRAWING TITLE: **BASEMENT LEVEL -2**  
**FIRE ALARM & SECURITY**

DRAWN BY: <b>M.KNOTT</b>	APPROVED BY:	DATE: <b>SEP'18</b>
PROJECT No.: <b>L2171</b>	DRAWING No.: <b>E012</b>	SCALE: <b>1:50</b>



**LEHNDING SERVICES DESIGN LTD**  
Unit 10, 10 Redlands Crescent, Larne, Co. Antrim, N.Ireland. BT40 1FF. Tel: +44(0) 2828 277 123.  
Global House, Ashley Avenue, Epsom, London. KT18 5AD. Tel: +44(0) 1372 253 207.  
Web: www.lehding.co.uk Email: info@lehding.co.uk