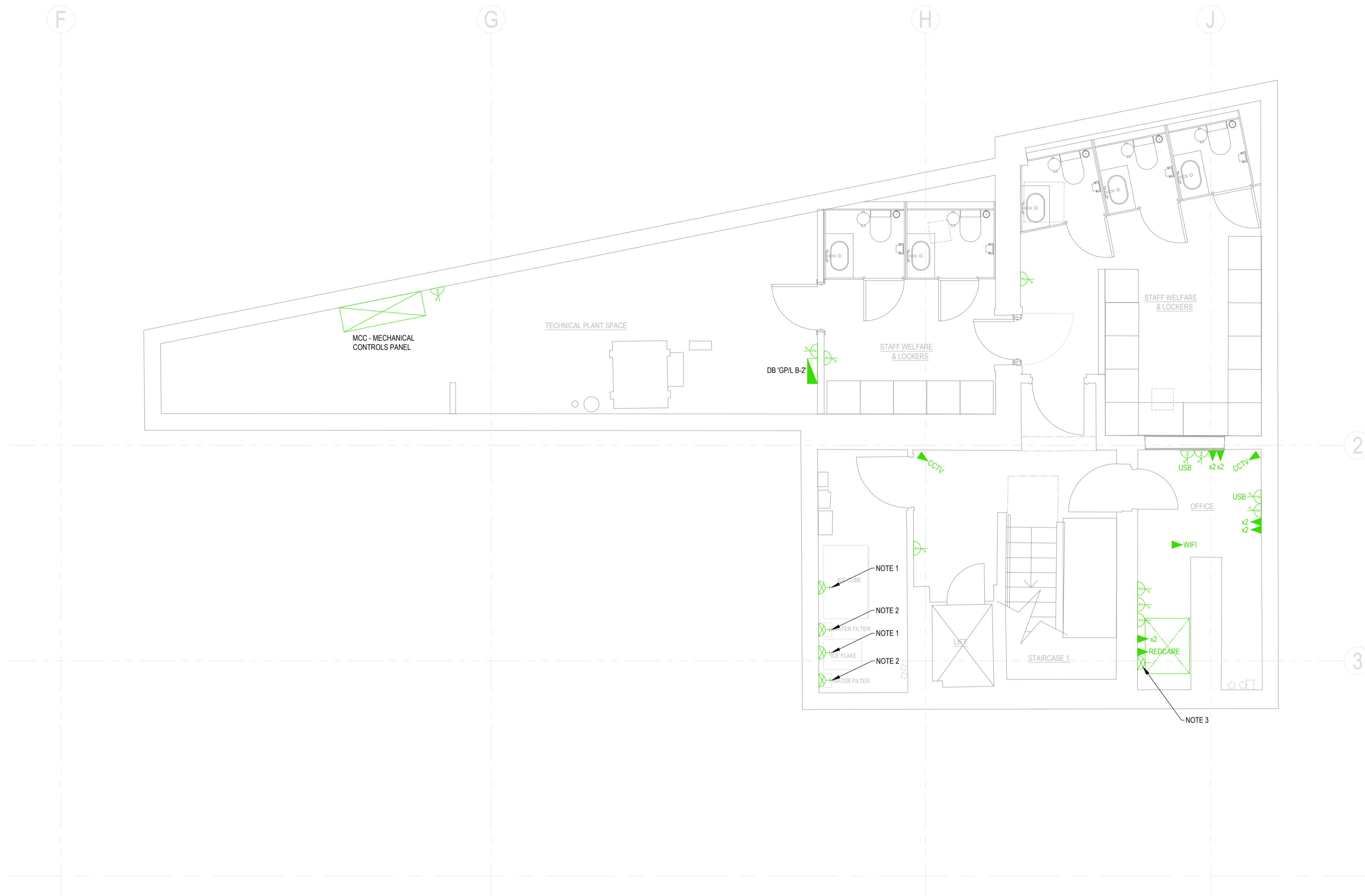


Do Not Scale.
All Figured Dimensions To Be Checked On Site Prior To Construction.
All Copyright Reserved.



GENERAL NOTES

DRAWING TO BE READ IN CONJUNCTION WITH THE INSTALLATION SPECIFICATION AND ALL OTHER RELEVANT DRAWINGS.

ALL WIRING AND ELECTRICAL WORKS TO BE INSTALLED IN ACCORDANCE WITH BS7671 THE IET WIRING REGULATIONS 18th EDITION & LATEST AMENDMENTS.

THIS ELECTRICAL DESIGN IS BASED ON THE ASSUMPTION THAT THIS INSTALLATION WILL BE MANAGED BY A "SKILLED PERSON" AND USED BY "INSTRUCTED PERSONS" AS DESCRIBED IN BS7671 THE IET WIRING REGULATIONS 18th EDITION. THE INSTALLATION SHOULD BE MANAGED IN A SAFE SYSTEM OF WORKING AS LAID DOWN IN THE ELECTRICITY AT WORK ACT 1989 WITH GUIDANCE FROM BS EN 50110-1 2013 OPERATION OF ELECTRICAL INSTALLATION.

ALL CABLING AND CONTAINMENT TO BE LSZH TO BS EN 50267-2-1, BASEC MARKED AND BS EN 50525-3-11 COMPLIANT.

ALL CABLING TO BE ADEQUATELY SUPPORTED AGAINST PREMATURE COLLAPSE IN THE EVENT OF FIRE.

ALL EARTHING AND BONDING SHALL BE PROVIDED IN ACCORDANCE WITH BS7671 THE IET WIRING REGULATIONS 18th EDITION & LATEST AMENDMENTS.

ALL WIREWAYS TO BE CONCEALED WITHIN THE BUILDING FABRIC. ALSO ALL EQUIPMENT AND ACCESSORIES TO BE RECESSED IN WALLS ie. A FLUSH INSTALLATION. UNDER NO CIRCUMSTANCES WILL SURFACE WIRING BE ACCEPTED.

WALL MOUNTED SOCKET OUTLETS, TELEPHONE POINTS AND TV SOCKETS ARE LOCATED BETWEEN 400mm AND 1000mm AFFL. WITH A PREFERENCE FOR THE LOWER END OF THE RANGE.

SWITCHES FOR PERMANENTLY WIRED APPLIANCES ARE LOCATED BETWEEN 400mm AND 1200mm AFFL. UNLESS NEEDED AT A HIGHER LEVEL FOR PARTICULAR APPLIANCES.

ALL SWITCHES AND CONTROLS THAT REQUIRE PRECISE HAND MOVEMENTS ARE LOCATED BETWEEN 750mm AND 1200mm AFFL.

SIMPLE PUSH BUTTON CONTROLS THAT REQUIRE LIMITED DEXTERITY ARE NOT MORE THAN 1200mm AFFL.

PULLCORDS FOR EMERGENCY ALARM SYSTEMS ARE COLOURED RED. LOCATED AS CLOSE TO A WALL AS POSSIBLE, AND HAVE TWO RED 50mm DIAMETER BANGLES. ONE SET AT 100mm AND THE OTHER SET BETWEEN 800mm AND 1000mm AFFL.

CONTROLS THAT NEED CLOSE VISION ARE LOCATED BETWEEN 1200mm AND 1400mm AFFL SO THAT READINGS MAY BE TAKEN BY A PERSON SITTING OR STANDING (WITH THERMOSTATS AT THE TOP OF THE RANGE).

SOCKET OUTLETS ARE LOCATED CONSISTENTLY IN RELATION TO DOORWAYS AND ROOM CORNERS BUT IN ANY CASE NO NEARER THAN 350mm FROM ROOM CORNERS.

LIGHT SWITCHES FOR USE BY THE GENERAL PUBLIC HAVE LARGE PUSH PADS AND ALIGN HORIZONTALLY WITH DOOR HANDLES WITHIN THE RANGE 900mm TO 1100mm FOR EASE OF LOCATION WHEN ENTERING A ROOM.

WHERE SWITCHES DESCRIBED ABOVE CANNOT BE PROVIDED, LIGHTING PULLCORDS ARE SET BETWEEN 900mm AND 1100mm AFFL AND FITTED WITH A 50mm DIAMETER BANGLE VISUALLY CONTRASTING WITH ITS BACKGROUND AND DISTINGUISHABLE VISUALLY FROM ANY EMERGENCY ASSISTANCE PULLCORD.

THE OPERATION OF SWITCHES, OUTLETS AND CONTROLS DOES NOT REQUIRE THE SIMULTANEOUS USE OF BOTH HANDS, EXCEPT WHERE THIS MODE OF OPERATION IS NECESSARY FOR SAFETY REASONS.

SWITCHED SOCKET OUTLETS INDICATE WHETHER THEY ARE 'ON'.

MAINS AND CIRCUIT ISOLATOR SWITCHES CLEARLY INDICATE THAT THEY ARE 'ON' OR 'OFF'.

FRONT PLATES CONTRAST VISIBLY WITH THEIR BACKGROUNDS.

WHERE THE COMMUNICATIONS CABLE CONTAINMENT SYSTEM REQUIRED TO PASS OVER ANY POWER CABLES etc. THEY SHALL CROSS AT 90° AND SHALL BE SEPARATED BY AN EARTH BONDED METALLIC BRIDGE.

THERE MUST BE A MINIMUM OF 100mm SEGREGATION BETWEEN COMMUNICATIONS CONTAINMENT SYSTEMS AND POWER CABLES CONTAINMENT SYSTEMS.

EQUIPMENT ON COLUMNS TO BE FULLY FIRE PROTECTED BY BUILDER.

ALL SERVICES/ROUTES THROUGHOUT BUILDING TO BE FULLY CO-ORDINATED ON SITE PRIOR TO INSTALLATION.

NOTE: FINAL LOCATION AND MOUNTING ARRANGEMENT OF ALL KITCHEN AND BAR ITEMS TO BE IN COORDINATION WITH HALLMARK INSTALLATION. WHERE REQUIRED COMMANDO OR FLEX OUTLETS TO BE PROVIDED TO SUIT EQUIPMENT. DRAWING TO BE READ IN CONJUNCTION WITH HALLMARK DRAWINGS AND SCHEDULES.

SPECIFIC NOTES

- FUSED SPUR UNIT FOR ICE MACHINE.
- POWER SUPPLY FOR WATER FILTER - REQUIREMENTS TO BE CONFIRMED.
- POWER SUPPLY AND REDCARE LINE FOR INTRUDER ALARM PANEL.

- LEGEND**
- DOUBLE SWITCHED SOCKET OUTLET
 - DOUBLE SWITCHED SOCKET OUTLET WITH DOUBLE USB PORTS
 - SWITCHED FUSED SPUR UNIT
 - UNSWITCHED FUSED SPUR UNIT
 - COMMANDO TYPE SOCKET OUTLET
 - ISOLATOR UNIT - RATING AND PHASE AS INDICATED
 - PULLCORD SWITCH
 - RESET BUTTON
 - REMOTE ILLUMINATED INDICATOR
 - DDA REFUGE CALL OUTSTATION. SYSTEM TO BS 5839-9.
 - CAT6 OUTLET - x2 DENOTES DOUBLE ETC
 - CAT6 OUTLET FOR IP CCTV - TO BE COORDINATED WITH INSTALLER.
 - CAT6 OUTLET FOR WIFI POINT - COVER TO BE OPTIMISED ON SITE.
 - DISTRIBUTION BOARD
 - LOCAL MCB BOARD MOUNTED LOCAL TO KITCHEN. C/W EMERGENCY SHUTOFF FOR COOKING EQUIPMENT.

- HAND DRYER - XELERATOR ECO UNLESS OTHERWISE SPECIFIED BY ARCHITECT AND / OR CLIENT.
- 42U COMMS CABINET - C/W CAT 6 PATCH PANELS TO SUIT THE NUMBER OF FIELD POINTS +40% SPARE CAPACITY, POWER MODULES AND FAN TRAY ETC.
- 3 COMPARTMENT RECESSED FLOOR BOX C/W DSSO / CAT6 / 5A OUTLETS AS INDICATED. TO INCLUDE BLANK PLATES WHERE RELEVANT. COVER TO MATCH FLOORING, FINISH TO ARCHITECT.
- RECESSED FLOOR GROMMET FOR SA LIGHTING OUTLET. COVER TO MATCH FLOORING, FINISH TO ARCHITECT.

A	TENDER ISSUE	MK	01/10/2018
REV	DETAILS	BY	APP DATE

CLIENT: **STREET MARKETS LTD**

PROJECT: **CENTRE POINT, LINK BLDG, W1**
DRAWING TITLE: **BASEMENT LEVEL -2 POWER & DATA INSTALLATION**

DRAWN BY: M.KNOTT	APPROVED BY:	DATE: SEP'18
PROJECT No.: L2171	DRAWING No.: E004	SCALE: 1:50



LEHNDING SERVICES DESIGN LTD
Unit 10, 10 Redlands Crescent, Lame, Co. Antrim, N.Ireland. BT40 1FF. Tel: +44(0) 2828 277 123.
Global House, Ashley Avenue, Epsom, London. KT18 5AD. Tel: +44(0) 1372 253 207.
Web: www.lehding.co.uk Email: info@lehding.co.uk