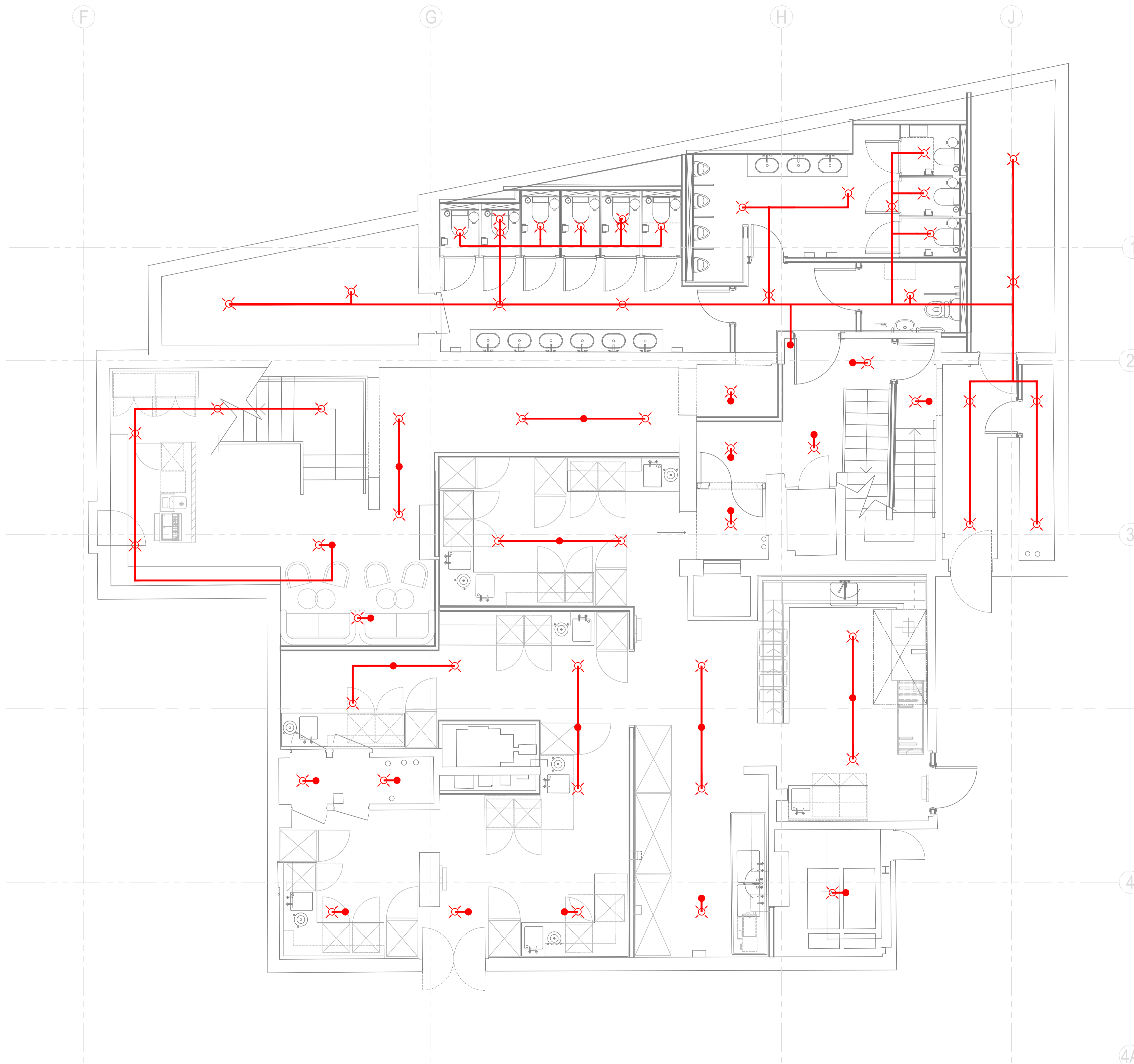


Do Not Scale.
All Figured Dimensions To Be Checked On Site Prior To Construction.
All Copyright Reserved.



- GENERAL NOTES:
1. ALL SERVICES/ROUTES THROUGHOUT BUILDING TO BE FULLY CO-ORDINATED ON SITE.
 2. DRAWING TO BE READ IN CONJUNCTION WITH THE INSTALLATION SPECIFICATION AND ALL OTHER RELEVANT DRAWINGS.
 3. EXCEPT WHERE DETAILED OTHERWISE, PRIMARY PROTECTION ONLY SHOWN.
 4. THIS DRAWING INDICATES THE APPROXIMATE POSITION OF THE SPRINKLER HEADS. POSITIONS OF HEADS TO BE AGREED ON SITE AND IN LINE WITH CO-ORDINATION DRAWING.
 5. THE EXACT NUMBER OF SPRINKLER HEADS SHOWN SHOULD BE TAKEN AS A GUIDE ONLY. THE CONTRACTOR SHALL DESIGN THE SYSTEM IN LINE WITH THE LPC REGULATIONS FOR DOMESTIC SPRINKLERS.
 6. FOR DETAILS OF PIPEWORK, HEADS ETC. SEE SPECIFICATION.
 7. PIPEWORK SHOWN FOR GUIDANCE ONLY. COMPLETE PIPEWORK INSTALLATION TO BE PROVIDED BY THE CONTRACTOR.
 8. CONTRACTOR TO LIAISE CLOSELY WITH THE MECHANICAL & ELECTRICAL CONTRACTORS FOR COORDINATION OF CEILING VOIDS, PRIOR TO INSTALLATION OF ANY SERVICES.
 9. ALL SPRINKLER PIPEWORK TO BE ADEQUATELY SUPPORTED.

- LEGEND:
- SPRINKLER HEAD
 - HIGH TEMPERATURE SPRINKLER HEAD
 - PRIMARY SPRINKLER DROPS TO SECONDARY SPRINKLER

NB: FIXING DETAIL AS PER STRUCTURAL ENGINEERS DETAIL

E	TENDER ISSUE	HN	28/09/2018
D	PRELIMINARY	HN	07/05/2018
C	PRELIMINARY	HN	04/05/2018
B	PRELIMINARY	HN	30/07/2018
A	PRELIMINARY	CW	27/07/2018
REV	DETAILS	BY	APP DATE

CLIENT: **STREET MARKETS LTD**

PROJECT: **CENTRE POINT, LINK BUILD. W1**

DRAWING TITLE: **BASEMENT LEVEL -1
SECONDARY SPRINKLER PROTECTION**

DRAWN BY: C.WEBER	APPROVED BY:	DATE: JUL'18
PROJECT No.: L2171	DRAWING No.: S005	SCALE: 1:50



LEHNDING SERVICES DESIGN LTD
Unit 10, 10 Redlands Crescent, Laine, Co. Antrim, N Ireland. BT40 1FF. Tel: +44(0) 2838 277 123.
Global House, Ashley Avenue, Epsom, London. KT18 5AD. Tel: +44(0) 1372 253 207.
Web: www.lehding.co.uk Email: info@lehding.co.uk