

01 SECTION



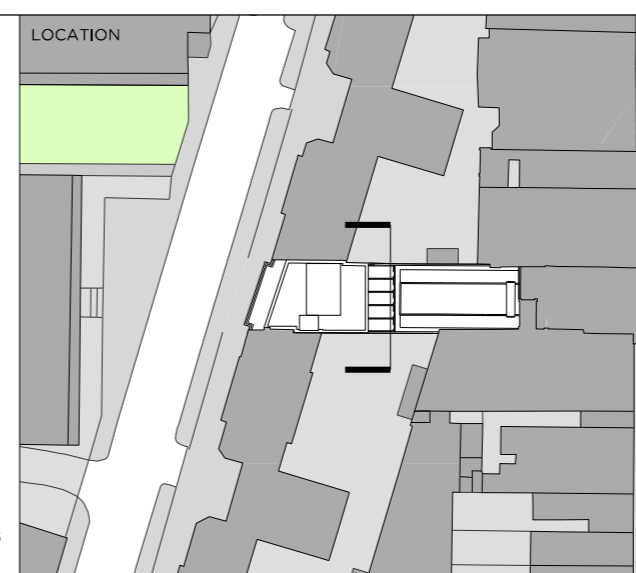
DRAWING NOTES

- | | |
|--|--|
| 01. Red terracotta type brick to approximate neighbouring buildings | 07. 'Ht and mix' brickwork with internal opening vent |
| 02. Stock brick to approximate neighbouring buildings | 08. Anodised metal plant enclosure |
| 03. White anodised aluminium frames | 09. Opening casement window in white anodised aluminium frames |
| 04. Anodised profiled metal cladding | 10. Metal balustrade |
| 05. Anodised profiled metal cladding, perforated with opening casement window behind | 11. Metal work railings with low brick wall behind |
| 06. Soldier coursing detail | 12. Pavement lights |
| | 13. Concrete cill |

REVISION	DATE	NOTE
P01	17.08.18	DRAFT PLANNING
P02	14.09.18	PLANNING

CLIENT	Moorgarth Living
PLANNING CONSULTANT	DIP9
STRUCTURAL ENGINEER	Mason Navarro Pledge
CIVIL ENGINEER	Elements
MEP ENGINEER	Elements
TRANSPORT CONSULTANT	Canevaro Associates
WASTE CONSULTANT	Canevaro Associates
FIRE CONSULTANT	Elements
COST CONSULTANT	Rider Levett Bucknall
PROJECT MANAGER	Rider Levett Bucknall
ECOLOGIST	Greengage
DAYLIGHT CONSULTANT	Deva Patman Redler
ACCESS CONSULTANT	-
ACOUSTIC CONSULTANT	AAD
APPROVED INSPECTOR	Bureau Veritas

- GENERAL NOTES
- Do not scale from this drawing.
 - All dimensions to be checked on site by the contractor and such dimensions to be his responsibility.
 - Report all drawing errors, omissions and discrepancies to the architect.
 - This document may be issued in an uncontrolled CAD format to enable others to use it as background information to make alterations and/or additions. In that instance the file will be accompanied by a PDF version, it is for those making such alterations and additions to ensure that they make use of current background information, Gibson Thornley Architects accepts no liability for any such alterations or additions to the background information or arising out of changes to background information which occur prior to alterations or additions being made.



GIBSON THORNLEY

Gibson Thornley Architects Limited
 No. 4 The Hangar
 Perseverance Works
 25-27 Hackney Road
 London E2 7NX
 www.gibsonsthornley.com
 info@gibsonsthornley.com
 +44 (0)20 7729 7064

CHURCHWAY
 DRAWING TITLE
 PROPOSED CROSS SECTION

PROJECT	ZONE	TYPE	CLASSIFICATION	DRAWING NO	REVISION
17009	-	AL	[00]	311	P02