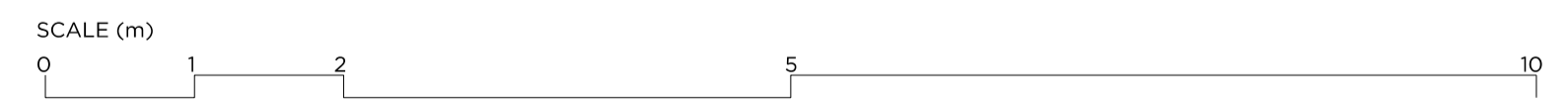


01 ELEVATION



**DRAWING NOTES**

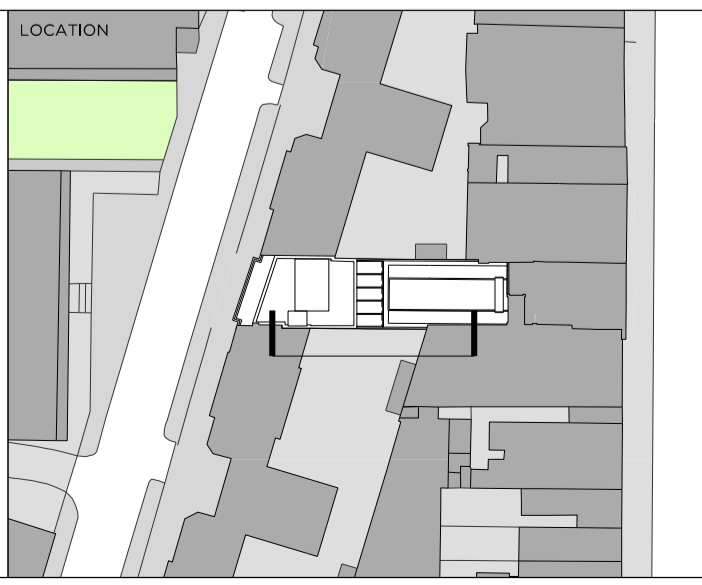
- 01. Red terracotta type brick to approximate neighbouring buildings
- 02. Stock brick to approximate neighbouring buildings
- 03. White anodised aluminium frames
- 04. Anodised profiled metal cladding
- 05. Anodised profiled metal cladding, perforated with opening casement window behind
- 06. Soldier coursing detail
- 07. H&M brickwork with internal opening vent
- 08. Anodised metal plant enclosure
- 09. Opening casement window in white anodised aluminium frames
- 10. Metal balustrade
- 11. Metal work railings with low brick wall behind
- 12. Pavement lights
- 13. Concrete cill

REVISION	DATE	NOTE
P01	17.08.18	DRAFT PLANNING
P02	14.09.18	PLANNING

TEAM	
<b>CLIENT</b>	Moorgarth Living
<b>PLANNING CONSULTANT</b>	DPS
<b>STRUCTURAL ENGINEER</b>	Mason Navarro Pledge
<b>CIVIL ENGINEER</b>	Mason Navarro Pledge
<b>MEP ENGINEER</b>	Elementa
<b>TRANSPORT CONSULTANT</b>	Canevaro Associates
<b>WASTE CONSULTANT</b>	Canevaro Associates
<b>FIRE CONSULTANT</b>	Elementa
<b>COST CONSULTANT</b>	Risler Lovett Bucinell
<b>PROJECT MANAGER</b>	Risler Lovett Bucinell
<b>ECOLOGIST</b>	Greengage
<b>DAYLIGHT CONSULTANT</b>	Delva Patman Redler
<b>ACCESS CONSULTANT</b>	AAD
<b>ACOUSTIC CONSULTANT</b>	Bureau Veritas
<b>APPROVED INSPECTOR</b>	Bureau Veritas

**GENERAL NOTES**

- Do not scale from this drawing.
- All dimensions to be checked on site by the contractor and such dimensions to be his responsibility.
- Report all drawing errors, omissions and discrepancies to the architect.
- This document may be issued in an uncontrolled CAD format to enable others to use it as background information to make alterations and/or additions. In that instance the file will be accompanied by a PDF version. It is for those making such alterations and additions to ensure that they make use of current background information. Gibson Thornley Architects accepts no liability for any such alterations or additions to the background information or arising out of changes to background information which occur prior to alterations or additions being made.



**GIBSON THORNLEY**

Gibson Thornley Architects Limited  
 No. 4 The Hangar  
 Perseverance Works  
 25-27 Hackney Road  
 London E2 7NX  
 www.gibsonsthornley.com  
 info@gibsonsthornley.com  
 +44 (0)20 7729 7064

**CHURCHWAY**  
 PROPOSED SOUTH ELEVATION

DRAWN BY	CHECKED	SCALE	STATUS		
HO	BG	1:50@A1 1:100@A3	PLANNING		
PROJECT	ZONE	TYPE	CLASSIFICATION	DRAWING NO	REVISION
17009	-	AL	-	211	P02