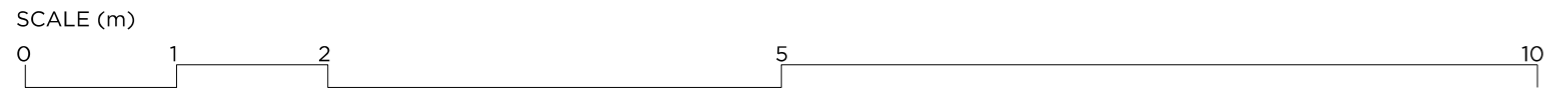




01 ELEVATION



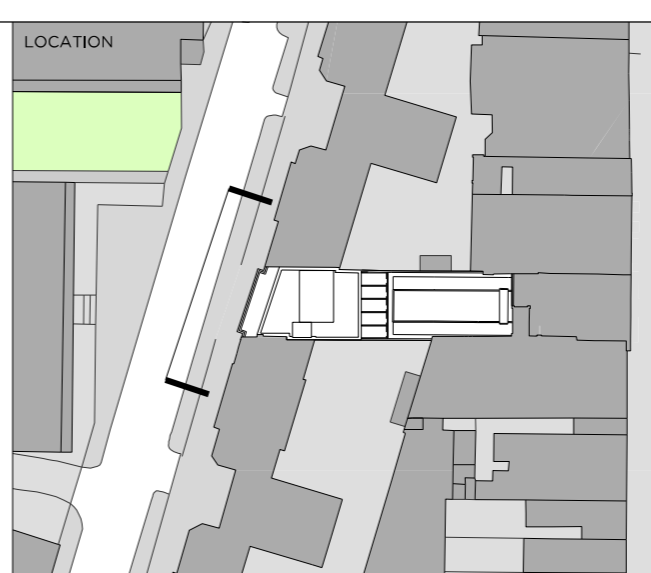
| DRAWING NOTES  |  |
|--|--|
| 01. Red terracotta type brick to approximate neighbouring buildings                  | 07. 'Ht and mix' brickwork with internal opening vent          |
| 02. Stock brick to approximate neighbouring buildings                                | 08. Anodised metal plant enclosure                             |
| 03. White anodised aluminium frames  | 09. Opening casement window in white anodised aluminium frames |
| 04. Anodised profiled metal cladding   | 10. Metal balustrade   |
| 05. Anodised profiled metal cladding, perforated with opening casement window behind | 11. Metal work railings with low brick wall behind             |
| 06. Soldier coursing detail  | 12. Pavement lights  |
|  | 13. Concrete cill  |

| REVISION | DATE     | NOTE           |
|----------|----------|----------------|
| P01      | 17.08.18 | DRAFT PLANNING |
| P02      | 14.09.18 | PLANNING       |

| TEAM                 |                       |
|----------------------|-----------------------|
| CLIENT               | Moorgarth Living      |
| PLANNING CONSULTANT  | DIP9                  |
| STRUCTURAL ENGINEER  | Mason Navarro Pledge  |
| CIVIL ENGINEER       | Mason Navarro Pledge  |
| MEP ENGINEER         | Elements              |
| TRANSPORT CONSULTANT | Canevaro Associates   |
| WASTE CONSULTANT     | Canevaro Associates   |
| FIRE CONSULTANT      | Elements              |
| COST CONSULTANT      | Rider Levett Bucknall |
| PROJECT MANAGER      | Rider Levett Bucknall |
| ECOLOGIST            | Greengage             |
| DAYLIGHT CONSULTANT  | Deva Patman Redler    |
| ACCESS CONSULTANT    | -                     |
| ACOUSTIC CONSULTANT  | AAD                   |
| APPROVED INSPECTOR   | Bureau Veritas        |

**GENERAL NOTES**

- Do not scale from this drawing.
- All dimensions to be checked on site by the contractor and such dimensions to be his responsibility.
- Report all drawing errors, omissions and discrepancies to the architect.
- This document may be issued in an uncontrolled CAD format to enable others to use it as background information to make alterations and/or additions. In that instance the file will be accompanied by a PDF version, it is for those making such alterations and additions to ensure that they make use of current background information. Gibson Thornley Architects accepts no liability for any such alterations or additions to the background information or arising out of changes to background information which occur prior to alterations or additions being made.



**GIBSON THORNLEY**  
 Gibson Thornley Architects Limited  
 No. 4 The Hangar  
 Perseverance Works  
 25-27 Hackney Road  
 London E2 7NX  
 www.gibsonsthornley.com  
 info@gibsonsthornley.com  
 +44 (0)20 7729 7064

**CHURCHWAY**  
 DRAWING TITLE  
**PROPOSED WEST ELEVATION**

| DRAWN BY | CHECKED | SCALE               | STATUS   |
|----------|---------|---------------------|----------|
| HO       | BG      | 1:50@A1<br>1:100@A3 | PLANNING |

| PROJECT | ZONE | TYPE | CLASSIFICATION | DRAWING NO | REVISION |
|---------|------|------|----------------|------------|----------|
| 17009   | -    | AL   | [00]           | 210        | P02      |