



01 ELEVATION



DRAWING NOTES

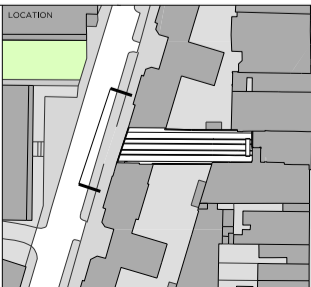
- Proposed Demolition

REVISION	DATE	NOTE
P01	17.06.18	DRAFT PLANNING
P02	14.09.18	PLANNING

TEAM	
CLIENT	Moorgarth Living
PLANNING CONSULTANT	GIP
STRUCTURAL ENGINEER	Mason Navarro-Pledge
CIVIL ENGINEER	Mason Navarro-Pledge
MEP ENGINEER	Elementa
TRANSPORT CONSULTANT	Canevaro Associates
WASTE CONSULTANT	Elementa
FIRE CONSULTANT	Rider Levett Bucknall
COST CONSULTANT	Rider Levett Bucknall
PROJECT MANAGER	Greenstage
ECOLOGIST	Delva Patman Redler
DAYLIGHT CONSULTANT	-
ACCESS CONSULTANT	AAD
ACOUSTIC CONSULTANT	Bureau Veritas
APPROVED INSPECTOR	

GENERAL NOTES

- Do not scale from this drawing.
- All dimensions to be checked on site by the contractor and such dimensions to be his responsibility.
- Report all drawing errors, omissions and discrepancies to the architect.
- This document may be issued in an uncontrolled CAD format to enable others to use it as background information to make alterations and/or additions. In that instance the file will be accompanied by a PDF version. It is for those making such alterations and additions to ensure that they make use of current background information. Gibson Thornley Architects accepts no liability for any such alterations or additions to the background information or arising out of changes to background information which occur prior to alterations or additions being made.

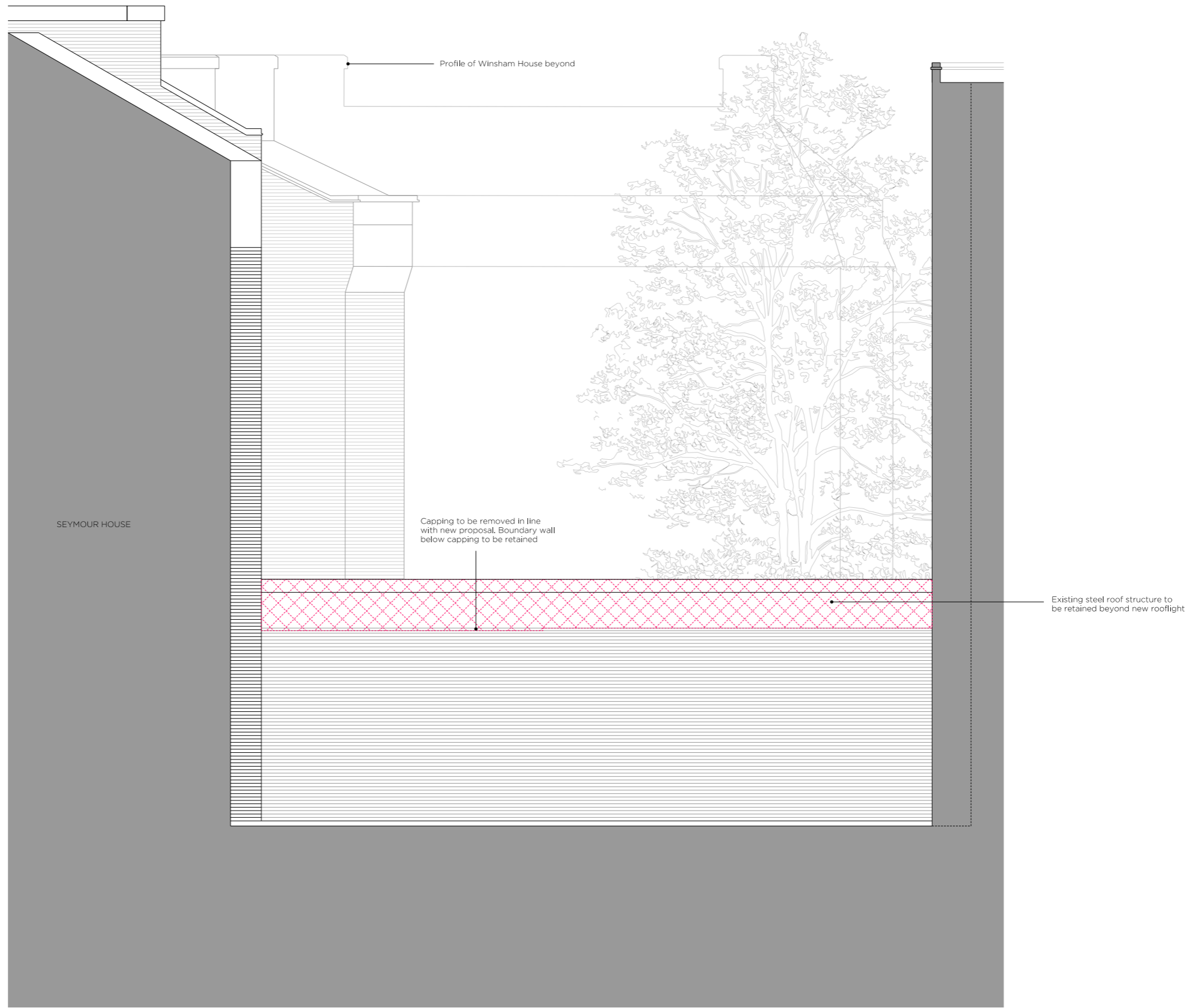


GIBSON THORNLEY
 Gibson Thornley Architects Limited
 No. 4 The Hangar
 Perseverance Works
 25-27 Hackney Road
 London E2 7HX
 www.gibsonsthornley.com
 info@gibsonsthornley.com
 +44 (0)20 7729 7064

JOB TITLE
 CHURCHWAY
 DRAWING TITLE
 EXISTING WEST ELEVATION

DRAWN BY	CHECKED	SCALE	STATUS
HO	BG	1:50@A1 1:100@A3	PLANNING

PROJECT	ZONE	TYPE	CLASSIFICATION	DRAWING NO	REVISION
17009	-	AL	[00]	200	P02



01 ELEVATION



DRAWING NOTES

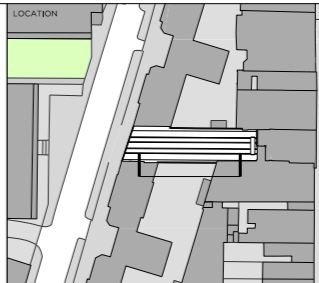
- Proposed Demolition

REVISION	DATE	NOTE
P01	17.08.18	DRAFT PLANNING
P02	14.09.18	PLANNING

TEAM	
CLIENT	Moorgarth Living
PLANNING CONSULTANT	DPM
STRUCTURAL ENGINEER	Mason Navarro Pledge
CIVIL ENGINEER	Mason Navarro Pledge
MEP ENGINEER	Elementa
TRANSPORT CONSULTANT	Canepari Associates
WASTE CONSULTANT	Canepari Associates
FIRE CONSULTANT	Elementa
COST CONSULTANT	Ryder Levett Bucknall
PROJECT MANAGER	Ryder Levett Bucknall
ECOLOGIST	Greengage
DAYLIGHT CONSULTANT	Deva Patman Redier
ACCESS CONSULTANT	-
ACOUSTIC CONSULTANT	AAD
APPROVED INSPECTOR	Bureau Vertus

GENERAL NOTES

1. Do not scale from this drawing.
2. All dimensions to be checked on site by the contractor and such dimensions to be his responsibility.
3. Report all drawing errors, omissions and discrepancies to the architect.
4. This document may be issued in an uncontrolled CAD format to enable others to use it as background information to make alterations and/or additions. In that instance the file will be accompanied by a PDF version. It is for those making such alterations and additions to ensure that they make use of current background information. Gibson Thornley Architects accepts no liability for any such alterations or additions to the background information or arising out of changes to background information which occur prior to alterations of additions being made.

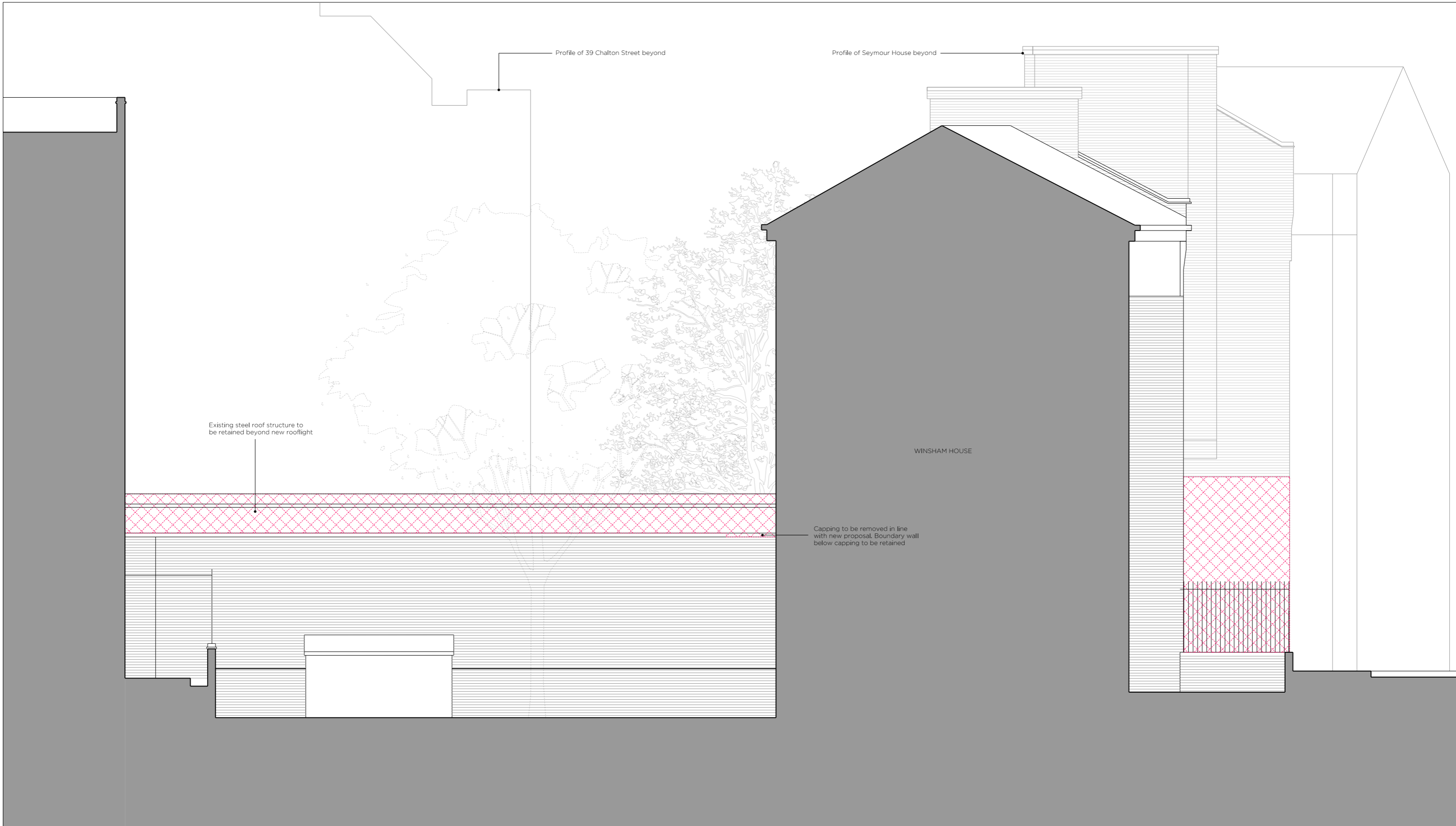


GIBSON THORNLEY
 Gibson Thornley Architects Limited
 No. 4 The Hangar
 Perseverance Works
 25-27 Hackney Road
 London E2 7NX
 www.gibsonsthornley.com
 info@gibsonsthornley.com
 +44 (0)20 7729 7064

JOB TITLE
CHURCHWAY
 DRAWING TITLE
EXISTING SOUTH ELEVATION

DRAWN BY	CHECKED	SCALE	STATUS
HO	BG	1:50@A1 1:100@A3	PLANNING

PROJECT	ZONE	TYPE	CLASSIFICATION	DRAWING NO	REVISION
17009	-	AL	-	201	P02



Existing steel roof structure to be retained beyond new rooflight

Profile of 39 Chalton Street beyond

Profile of Seymour House beyond

WINSHAM HOUSE

Capping to be removed in line with new proposal. Boundary wall below capping to be retained

01 ELEVATION

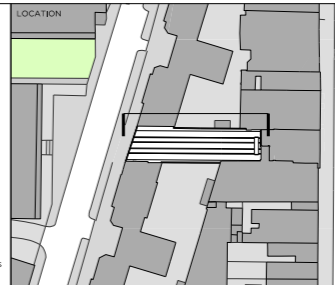


DRAWING NOTES
- Proposed Demolition

REVISION	DATE	NOTE
P01	17.08.18	DRAFT PLANNING
P02	14.09.18	PLANNING

TEAM	
CLIENT	Moorgarth Llp Ptg
PLANNING CONSULTANT	Dmp
STRUCTURAL ENGINEER	Mason Navarro Fledge
CIVIL ENGINEER	Mason Navarro Fledge
MEP ENGINEER	Elementa
TRANSPORT CONSULTANT	Carpenter Associates
WASTE CONSULTANT	Carpenter Associates
FIRE CONSULTANT	Elementa
COST CONSULTANT	Ryder Levett Bucknall
PROJECT MANAGER	Ryder Levett Bucknall
ECOLOGIST	Greengage
DAYLIGHT CONSULTANT	Deva Pisman Rieder
ACCESS CONSULTANT	-
ACOUSTIC CONSULTANT	AAD
APPROVED INSPECTOR	Bureau Veritas

GENERAL NOTES
1. Do not scale from this drawing.
2. All dimensions to be checked on site by the contractor and such dimensions to be his responsibility.
3. Report all drawing errors, omissions and discrepancies to the architect.
4. This document may be issued in an uncontrolled CAD format to enable others to use it as background information to make alterations and/or additions. In that instance the file will be accompanied by a PDF version. It is for those making such alterations and additions to ensure that they make use of current background information. Gibson Thornley Architects accepts no liability for any such alterations or additions to the background information or arising out of changes to background information which occur prior to alterations of additions being made.



GIBSON THORNLEY
Gibson Thornley Architects Limited
No. 4 The Hangar
Perseverance Works
25-27 Hackney Road
London E2 7NX
www.gibsonsthornley.com
info@gibsonsthornley.com
+44 (0)20 7729 7064

JOB TITLE
CHURCHWAY
DRAWING TITLE
EXISTING NORTH ELEVATION

DRAWN BY	CHECKED	SCALE	STATUS
HO	BG	1:50@A1 1:100@A3	PLANNING

PROJECT	ZONE	TYPE	CLASSIFICATION	DRAWING NO	REVISION
17009	-	AL	-	202	P02



01 ELEVATION



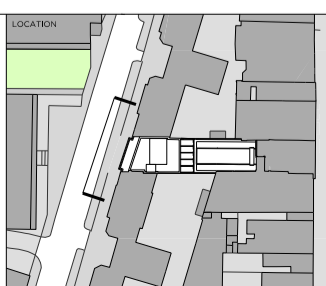
DRAWING NOTES	
01. Red terracotta type brick to approximate neighbouring buildings	07. 750 and 1000 brickwork with internal ceiling vent
02. Stock brick to approximate neighbouring buildings	08. Anodised metal plant enclosure
03. White anodised aluminium frames	09. Opening casement window in white anodised aluminium frames
04. Anodised profiled metal cladding	10. Metal balustrade
05. Anodised profiled metal cladding, perforated with opening casement window behind	11. Metal work railings with low brick wall
06. Solid brick coursing detail	12. Pavement lights
	13. Concrete

REVISION	DATE	NOTE
P01	17.06.18	DRAFT PLANNING
P02	14.09.18	PLANNING

TEAM	
CLIENT	Moorgarth Living GIP
PLANNING CONSULTANT	Mason Navarro-Pledge
CIVIL ENGINEER	Elementa
MEP ENGINEER	Elementa
TRANSPORT CONSULTANT	Caneparo Associates
WASTE CONSULTANT	Elementa
FIRE CONSULTANT	Rider Levett Bucknall
COST CONSULTANT	Rider Levett Bucknall
PROJECT MANAGER	Greengate
ECOLOGIST	Delva Patman Redler
DAYLIGHT CONSULTANT	-
ACCESS CONSULTANT	AAD
ACOUSTIC CONSULTANT	Bureau Veritas
APPROVED INSPECTOR	Bureau Veritas

GENERAL NOTES

- Do not scale from this drawing.
- All dimensions to be checked on site by the contractor and such dimensions to be his responsibility.
- Report all drawing errors, omissions and discrepancies to the architect.
- This document may be issued in an uncontrolled CAD format to enable others to use it as background information to make alterations and/or additions. In that instance the file will be accompanied by a PDF version. It is for those making such alterations and additions to ensure that they make use of current background information. Gibson Thornley Architects accepts no liability for any such alterations or additions to the background information or arising out of changes to background information which occur prior to alterations or additions being made.

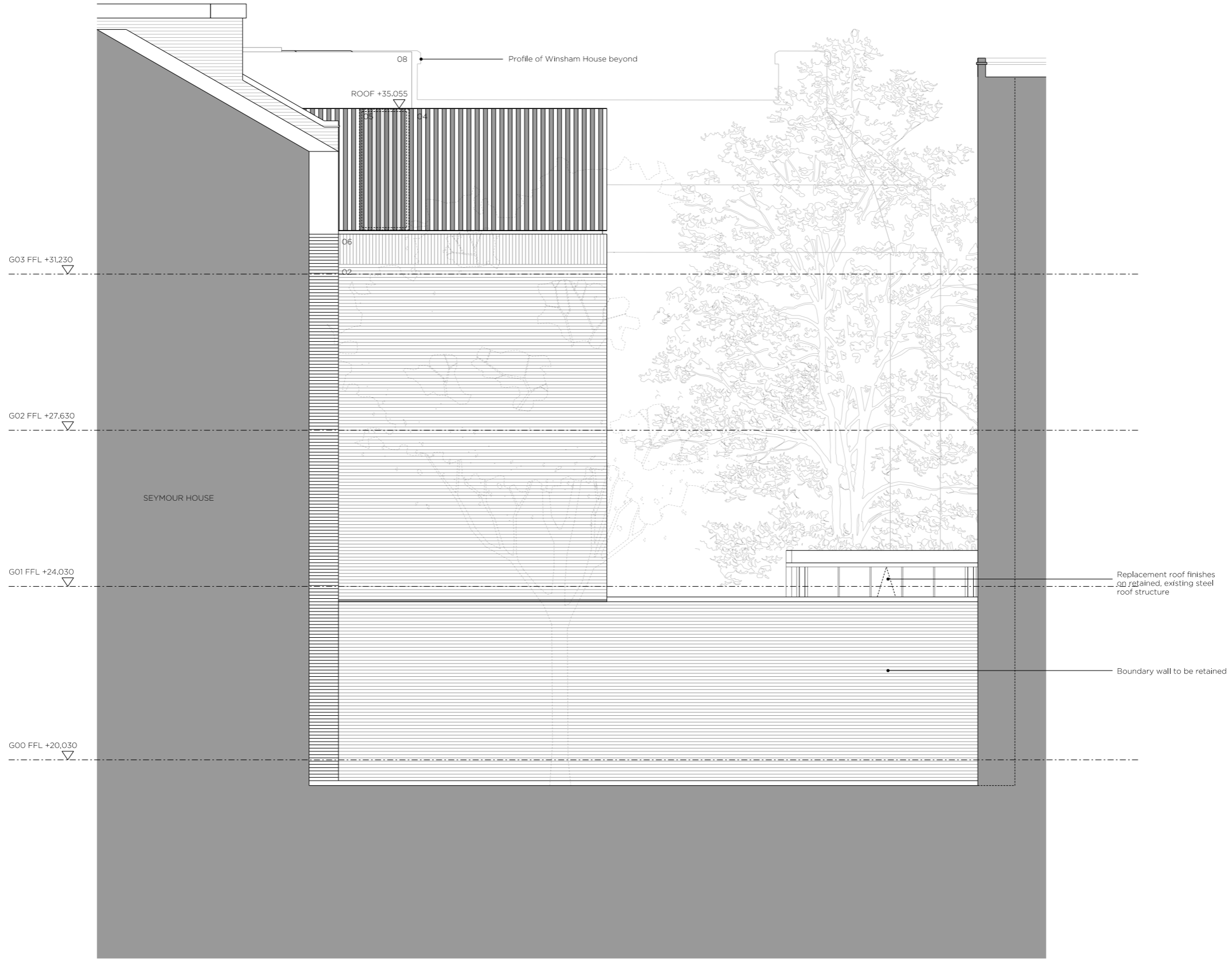


GIBSON THORNLEY
 Gibson Thornley Architects Limited
 No. 4 The Hangar
 Perseverance Works
 25-27 Hackney Road
 London E2 7HX
 www.gibsonsthornley.com
 info@gibsonsthornley.com
 +44 (0)20 7729 7064

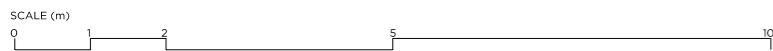
JOB TITLE
 CHURCHWAY
 DRAWING TITLE
 PROPOSED WEST ELEVATION

DRAWN BY	CHECKED	SCALE	STATUS
HO	BG	1:50@A1 1:100@A3	PLANNING

PROJECT	ZONE	TYPE	CLASSIFICATION	DRAWING NO	REVISION
17009	-	AL	[00]	210	P02



01 ELEVATION



DRAWING NOTES

- 01. Red terracotta type brick to approximate neighbouring buildings
- 02. Stock brick to approximate neighbouring buildings
- 03. White anodised aluminium frames
- 04. Anodised profiled metal cladding
- 05. Anodised profiled metal cladding perforated with opening casement window behind
- 06. Solid kerf cladding detail
- 07. 1/2" and 1/4" brickwork with internal opening vent
- 08. Anodised metal plant enclosure
- 09. Opening casement window in white anodised aluminium frames
- 10. Metal balustrade
- 11. Metal work railings with low brick wall
- 12. Pavement lights
- 13. Concrete

REVISION DATE NOTE

REVISION	DATE	NOTE
P01	17.08.18	DRAFT PLANNING
P02	14.09.18	PLANNING

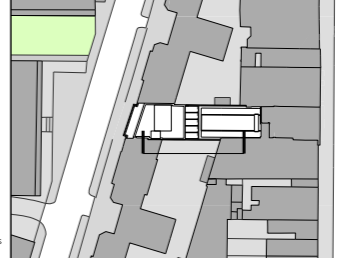
TEAM

CLIENT	Moorgarth Living Group
PLANNING CONSULTANT	Ding Mason Navarro Fledge Elamanta
STRUCTURAL ENGINEER	Mason Navarro Fledge Elamanta
CIVIL ENGINEER	Mason Navarro Fledge Elamanta
MEP ENGINEER	Chaparro Associates
TRANSPORT CONSULTANT	Chaparro Associates
WASTE CONSULTANT	Chaparro Associates
FIRE CONSULTANT	Elamanta
COST CONSULTANT	Ryder Levett Bucknall Greenpage
PROJECT MANAGER	Ryder Levett Bucknall Greenpage
ECOLOGIST	DeVos Parnham Reider
DAYLIGHT CONSULTANT	-
ACCESS CONSULTANT	AAD
ACOUSTIC CONSULTANT	AAD
APPROVED INSPECTOR	Bureau Veritas

GENERAL NOTES

1. Do not scale from this drawing.
2. All dimensions to be checked on site by the contractor and such dimensions to be his responsibility.
3. Report all drawing errors, omissions and discrepancies to the architect.
4. This document may be issued in an uncontrolled CAD format to enable others to use it as background information to make alterations and/or additions. In that instance the file will be accompanied by a PDF version. It is for those making such alterations and additions to ensure that they make use of current background information. Gibson Thornley Architects accepts no liability for any such alterations or additions to the background information or arising out of changes to background information which occur prior to alterations of additions being made.

LOCATION

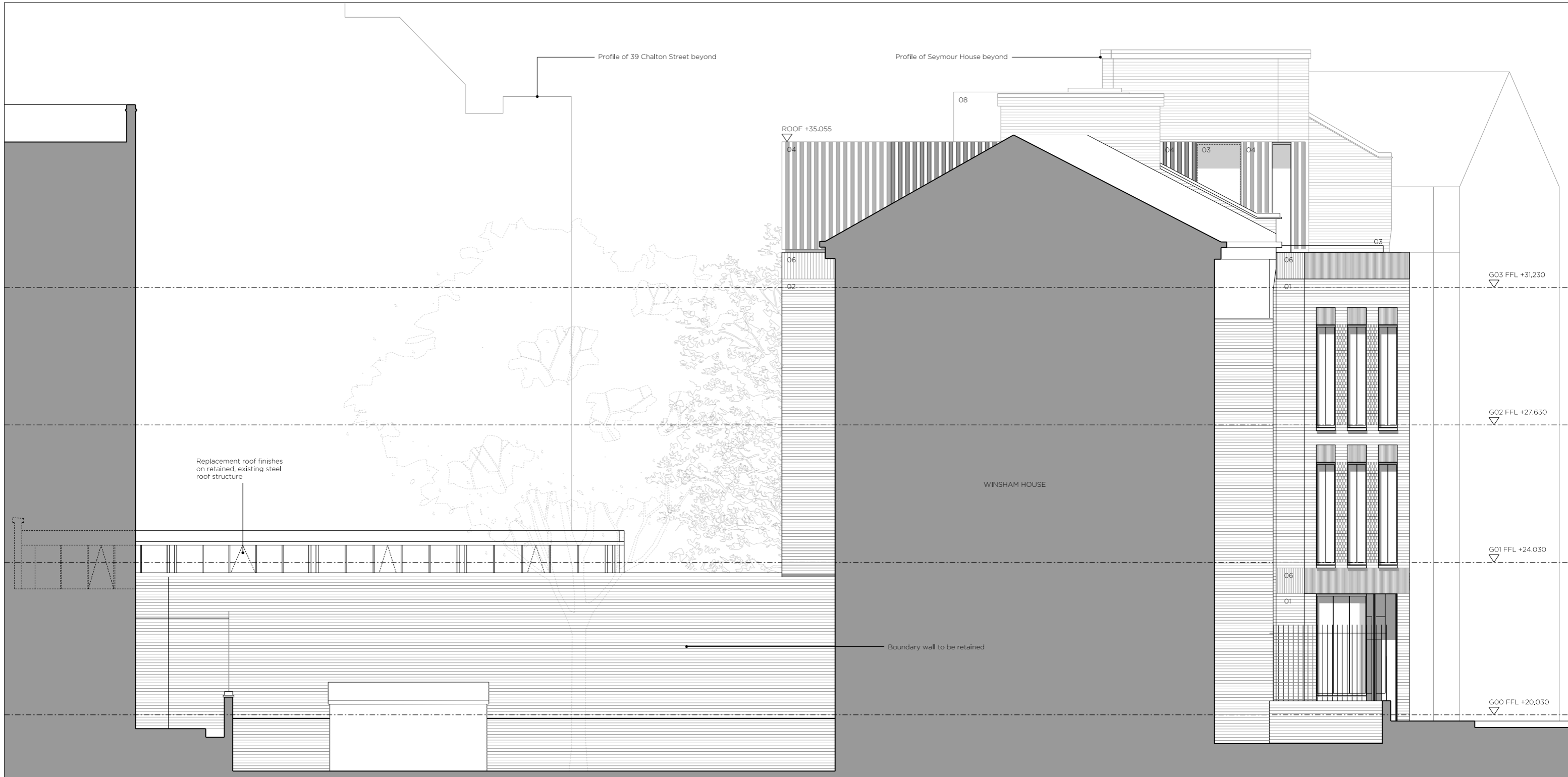


GIBSON THORNLEY

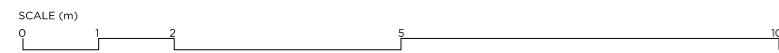
Gibson Thornley Architects Limited
 No. 4 The Hangar
 Perseverance Works
 25-27 Hackney Road
 London E2 7NX
 www.gibsonsthornley.com
 info@gibsonsthornley.com
 +44 (0)20 7729 7064

CHURCHWAY
 PROPOSED SOUTH ELEVATION

DRAWN BY	CHECKED	SCALE	STATUS
HO	BG	1:50 @ A1 1:100 @ A3	PLANNING
PROJECT	ZONE	TYPE	CLASSIFICATION
17009	-	AL	-
DRAWING NO	REVISION		
211	P02		



01 ELEVATION



DRAWING NOTES

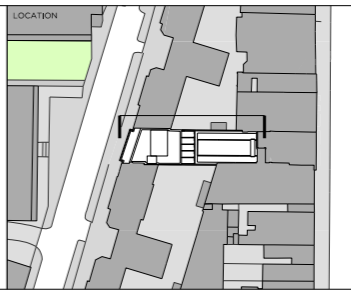
- 01. Red terracotta type brick to approximate neighbouring buildings
- 02. Stock brick to approximate neighbouring buildings
- 03. White anodised aluminium frames
- 04. Anodised profiled metal cladding
- 05. Anodised profiled metal cladding, perforated with opening casement window behind
- 06. Sillier coursing detail
- 07. 40 and 60mm brickwork with internal opening vent
- 08. Anodised metal plant enclosure
- 09. Opening casement window in white anodised aluminium frames
- 10. Metal balustrade
- 11. Metal work railings with low brick wall behind
- 12. Pavement lights
- 13. Concrete

REVISION	DATE	NOTE
P01	17.08.18	DRAFT PLANNING
P02	14.09.18	PLANNING

TEAM	
CLIENT	Moorgarth Living
PLANNING CONSULTANT	DP9
STRUCTURAL ENGINEER	Mason Navarro Pledge
CIVIL ENGINEER	Mason Navarro Pledge
MEP ENGINEER	Elementa
TRANSPORT CONSULTANT	Canepari Associates
WASTE CONSULTANT	Canepari Associates
FIRE CONSULTANT	Elementa
COST CONSULTANT	Ryder Levett Bucknall
PROJECT MANAGER	Ryder Levett Bucknall
ECOLOGIST	Greengage
DAYLIGHT CONSULTANT	Deva Patman Redler
ACCESS CONSULTANT	AAD
ACOUSTIC CONSULTANT	AAD
APPROVED INSPECTOR	Bureau Veritas

GENERAL NOTES

- Do not scale from this drawing.
- All dimensions to be checked on site by the contractor and such dimensions to be his responsibility.
- Report all drawing errors, omissions and discrepancies to the architect.
- This document may be issued in an uncontrolled CAD format to enable others to use it as background information to make alterations and/or additions. In that instance the file will be accompanied by a PDF version. It is for those making such alterations and additions to ensure that they make use of current background information. Gibson Thornley Architects accepts no liability for any such alterations or additions to the background information or arising out of changes to background information which occur prior to alterations of additions being made.

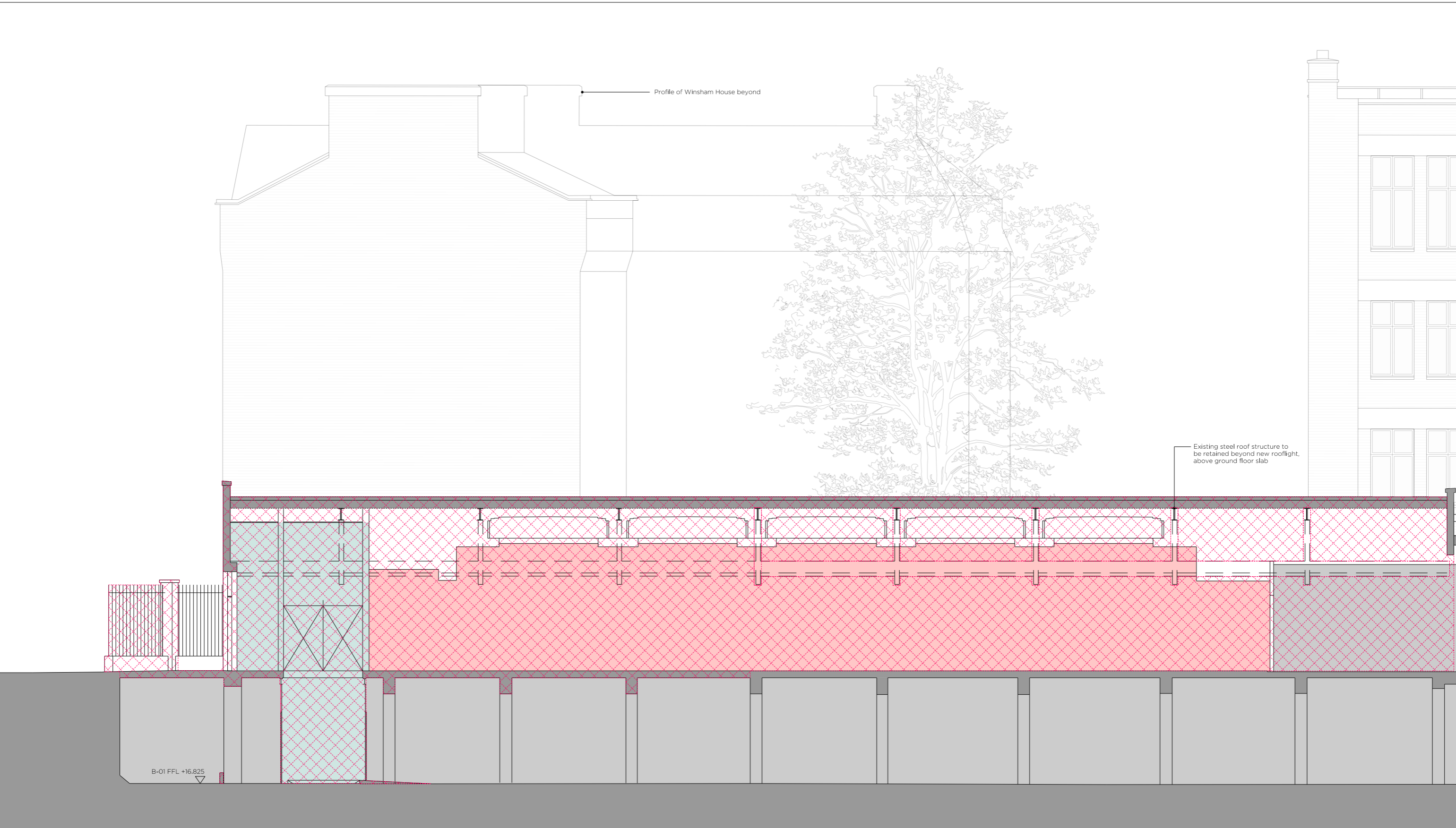


GIBSON THORNLEY
 Gibson Thornley Architects Limited
 No. 4 The Hangar
 Perseverance Works
 25-27 Hackney Road
 London E2 7NX
 www.gibsonsthornley.com
 info@gibsonsthornley.com
 +44 (0)20 7729 7064

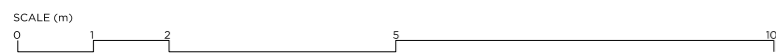
CHURCHWAY
 DRAWING TITLE
PROPOSED NORTH ELEVATION

DRAWN BY	CHECKED	SCALE	STATUS
HO	BG	1:50@A1 1:100@A3	PLANNING

PROJECT	ZONE	TYPE	CLASSIFICATION	DRAWING NO	REVISION
17009	-	AL	-	212	P02



01 SECTION

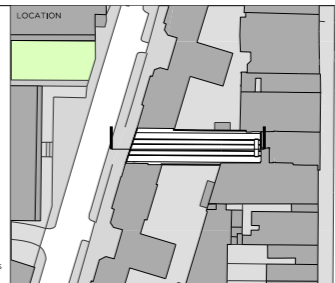


DRAWING NOTES
 - Proposed Demolition

REVISION	DATE	NOTE
P01	17.08.18	DRAFT PLANNING
P02	14.09.18	PLANNING

TEAM	NAME
CLIENT	Moorgarth Living Group
PLANNING CONSULTANT	Ding
STRUCTURAL ENGINEER	Mason Navarro Fledge
CIVIL ENGINEER	Mason Navarro Fledge
MEP ENGINEER	Elementa
TRANSPORT CONSULTANT	Caneparo Associates
WASTE CONSULTANT	Caneparo Associates
FIRE CONSULTANT	Elementa
COST CONSULTANT	Ryder Levett Bucknall
PROJECT MANAGER	Ryder Levett Bucknall
ECOLOGIST	Greengage
DAYLIGHT CONSULTANT	De'vo Patman Rieder
ACCESS CONSULTANT	-
ACOUSTIC CONSULTANT	AAD
APPROVED INSPECTOR	Bureau Veritas

GENERAL NOTES
 1. Do not scale from this drawing.
 2. All dimensions to be checked on site by the contractor and such dimensions to be his responsibility.
 3. Report all drawing errors, omissions and discrepancies to the architect.
 4. This document may be issued in an uncontrolled CAD format to enable others to use it as background information to make alterations and/or additions. In that instance the file will be accompanied by a PDF version. It is for those making such alterations and additions to ensure that they make use of current background information. Gibson Thornley Architects accepts no liability for any such alterations or additions to the background information or arising out of changes to background information which occur prior to alterations of additions being made.

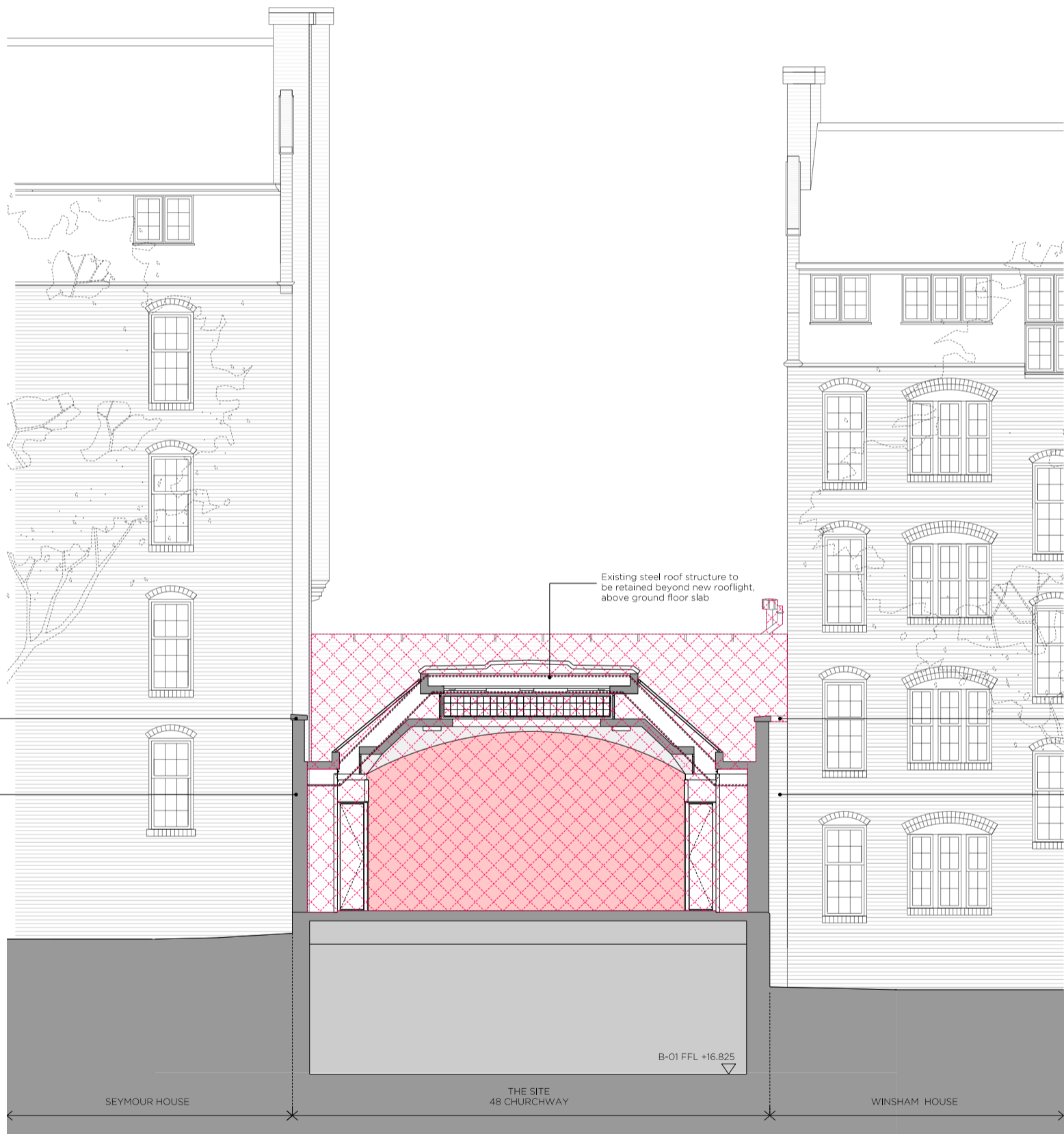


GIBSON THORNLEY
 Gibson Thornley Architects Limited
 No. 4 The Hangar
 Perseverance Works
 25-27 Hackney Road
 London E2 7NX
 www.gibsonsthornley.com
 info@gibsonsthornley.com
 +44 (0)20 7729 7064

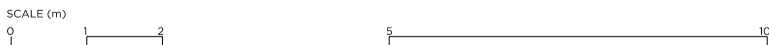
CHURCHWAY
 EXISTING LONGITUDINAL SECTION

DRAWN BY	CHECKED	SCALE	STATUS
HO	BG	1:50 @ A1 1:100 @ A3	PLANNING

PROJECT	ZONE	TYPE	CLASSIFICATION	DRAWING NO	REVISION
17009	-	AL	-	300	P02



01 SECTION

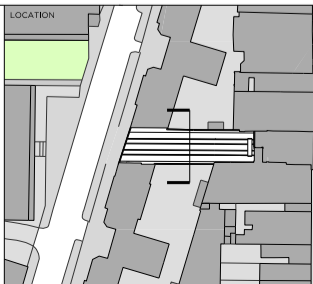


DRAWING NOTES
 - Proposed Demolition

REVISION	DATE	NOTE
P01	17.06.18	DRAFT PLANNING
P02	14.09.18	PLANNING

TEAM	
CLIENT	Moorgarth Living
PLANNING CONSULTANT	GIP
STRUCTURAL ENGINEER	Mason Navarro-Pledge
CIVIL ENGINEER	Mason Navarro-Pledge
MEP ENGINEER	Elemento
TRANSPORT CONSULTANT	Caneparo Associates
WASTE CONSULTANT	Caneparo Associates
FIRE CONSULTANT	Elemento
COST CONSULTANT	Rider Levett Bucknall
PROJECT MANAGER	Rider Levett Bucknall
ECOLOGIST	Greengage
DAYLIGHT CONSULTANT	Delva Patman Redler
ACCESS CONSULTANT	-
ACOUSTIC CONSULTANT	AAD
APPROVED INSPECTOR	Bureau Veritas

GENERAL NOTES
 1. Do not scale from this drawing.
 2. All dimensions to be checked on site by the contractor and such dimensions to be his responsibility.
 3. Report all drawing errors, omissions and discrepancies to the architect.
 4. This document may be issued in an uncontrolled CAD format to enable others to use it as background information to make alterations and/or additions. In that instance the file will be accompanied by a PDF version. It is for those making such alterations and additions to ensure that they make use of current background information. Gibson Thornley Architects accepts no liability for any such alterations or additions to the background information or arising out of changes to background information which occur prior to alterations or additions being made.

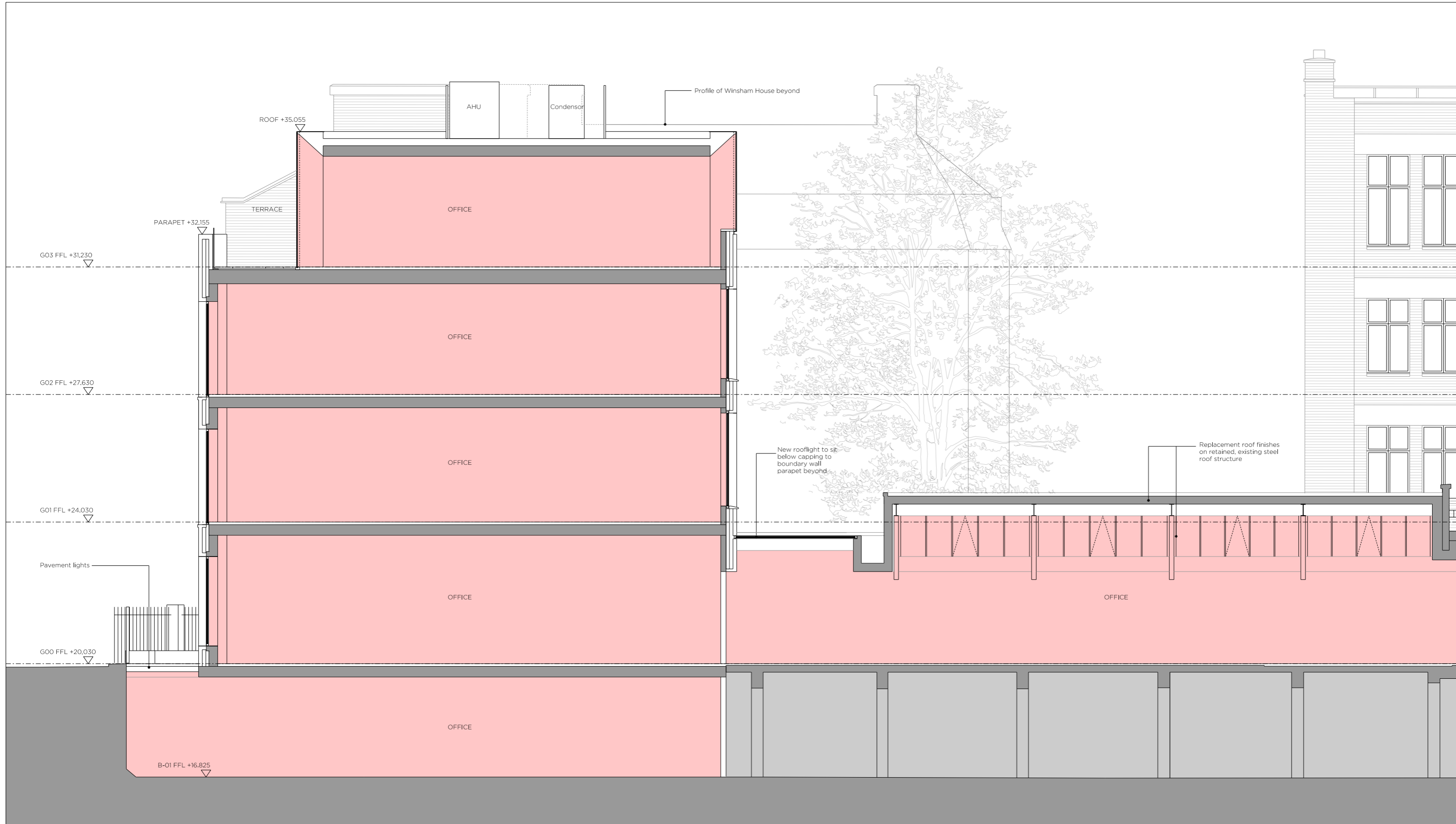


GIBSON THORNLEY
 Gibson Thornley Architects Limited
 No. 4 The Hangar
 Perseverance Works
 25-27 Hackney Road
 London E2 7HX
 www.gibsonsthornley.com
 info@gibsonsthornley.com
 +44 (0)20 7729 7064

JOB TITLE
CHURCHWAY
 DRAWING TITLE
EXISTING CROSS SECTION

DRAWN BY	CHECKED	SCALE	STATUS
HO	BG	1:50@A1 1:100@A3	PLANNING

PROJECT	ZONE	TYPE	CLASSIFICATION	DRAWING NO	REVISION
17009	-	AL	[00]	301	P02



01 SECTION
SCALE (m)
0 1 2 5 10

DRAWING NOTES

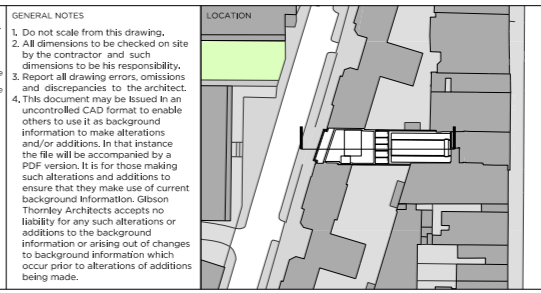
REVISION	DATE	NOTE
P01	17.08.18	DRAFT PLANNING
P02	14.09.18	PLANNING

TEAM

CLIENT	Moorgarth Living Group
PLANNING CONSULTANT	Ding
STRUCTURAL ENGINEER	Mason Navarro Fledge
CIVIL ENGINEER	Mason Navarro Fledge
MEP ENGINEER	Elementa
TRANSPORT CONSULTANT	Carpenter Associates
WASTE CONSULTANT	Carpenter Associates
FIRE CONSULTANT	Elementa
COST CONSULTANT	Ryder Levitt Bucknall
PROJECT MANAGER	Ryder Levitt Bucknall
ECOLOGIST	Greengage
DAYLIGHT CONSULTANT	DeVos Parnham Rieder
ACCESS CONSULTANT	-
ACOUSTIC CONSULTANT	AAD
APPROVED INSPECTOR	Bureau Veritas

GENERAL NOTES

- Do not scale from this drawing.
- All dimensions to be checked on site by the contractor and such dimensions to be his responsibility.
- Report all drawing errors, omissions and discrepancies to the architect.
- This document may be issued in an uncontrolled CAD format to enable others to use it as background information to make alterations and/or additions. In that instance the file will be accompanied by a PDF version. It is for those making such alterations and additions to ensure that they make use of current background information. Gibson Thornley Architects accepts no liability for any such alterations or additions to the background information or arising out of changes to background information which occur prior to alterations of additions being made.

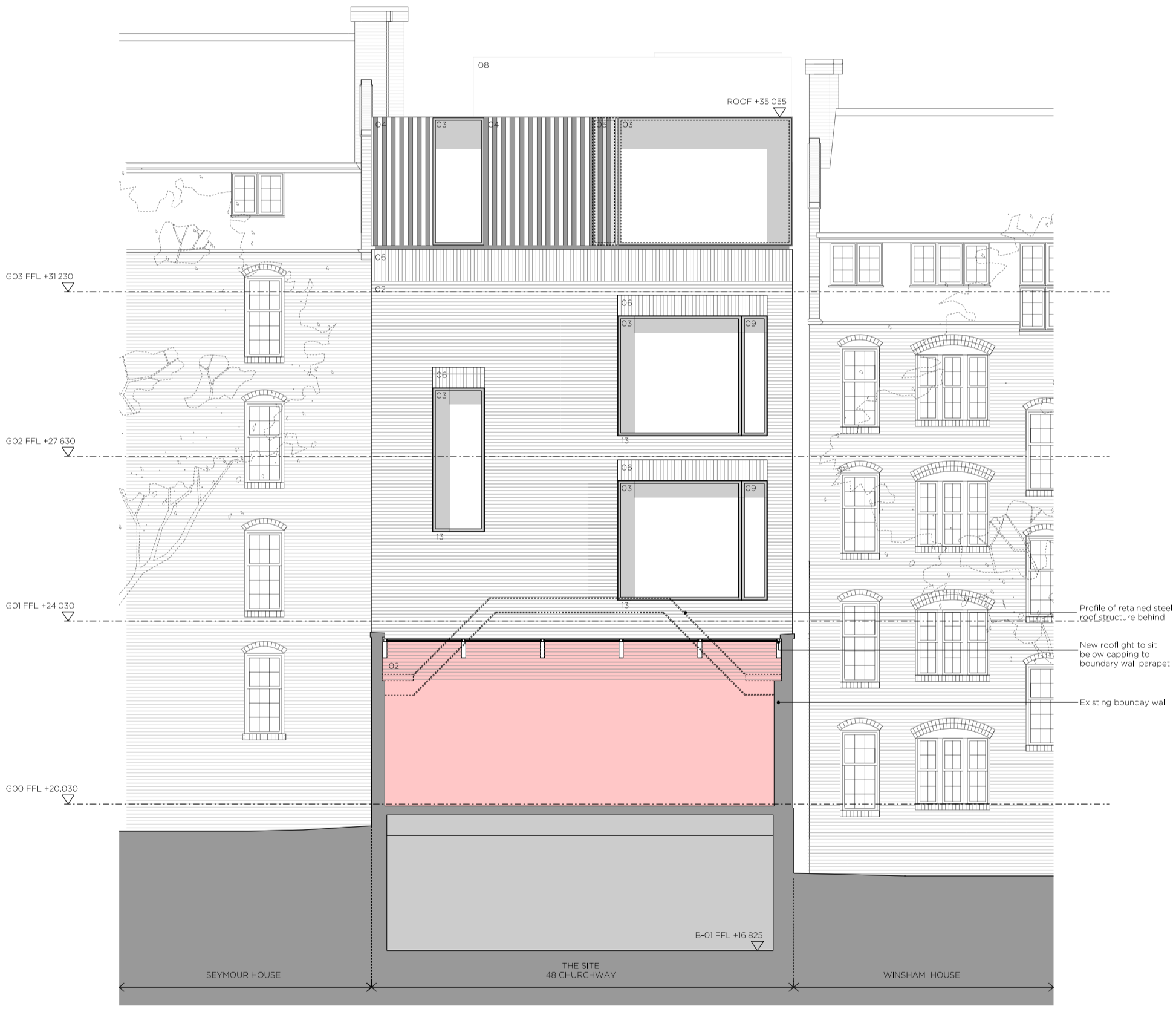


GIBSON THORNLEY
Gibson Thornley Architects Limited
No. 4 The Hangar
Perseverance Works
25-27 Hackney Road
London E2 7NX
www.gibsonsthornley.com
info@gibsonsthornley.com
+44 (0)20 7729 7064

JOB TITLE
CHURCHWAY
PROPOSED LONGITUDINAL SECTION

DRAWN BY	CHECKED	SCALE	STATUS
HO	BG	1:50 @ A1 1:100 @ A3	PLANNING

PROJECT	ZONE	TYPE	CLASSIFICATION	DRAWING NO	REVISION
17009	-	AL	-	310	P02



01 SECTION



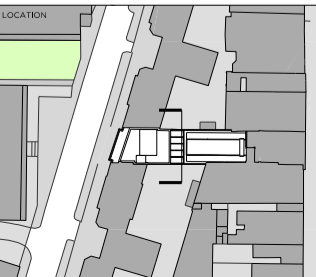
DRAWING NOTES	
01. Red terracotta type brick to approximate neighbouring buildings	07. 750 and 1000 brickwork with internal ceiling vent
02. Stock brick to approximate neighbouring buildings	08. Anodised metal plant enclosure
03. White anodised aluminium frames	09. Opening casement window in white anodised aluminium frames
04. Anodised profiled metal cladding	10. Metal balustrade
05. Anodised profiled metal cladding perforated with opening casement window behind	11. Metal work railings with low brick wall
06. Solidier coursing detail	12. Pavement lights
	13. Concrete

REVISION	DATE	NOTE
P01	17.06.18	DRAFT PLANNING
P02	14.09.18	PLANNING

TEAM	
CLIENT	Moorgarth Living
PLANNING CONSULTANT	GIP
STRUCTURAL ENGINEER	Mason Navarro-Pedra
CIVIL ENGINEER	Elemento
MEP ENGINEER	Elemento
TRANSPORT CONSULTANT	Caneparo Associates
WASTE CONSULTANT	Elemento
FIRE CONSULTANT	Rider Levett Bucknall
COST CONSULTANT	Rider Levett Bucknall
PROJECT MANAGER	Greengate
ECOLOGIST	Delva Patman Redler
DAYLIGHT CONSULTANT	-
ACCESS CONSULTANT	AAD
ACOUSTIC CONSULTANT	Bureau Veritas
APPROVED INSPECTOR	Bureau Veritas

GENERAL NOTES

- Do not scale from this drawing.
- All dimensions to be checked on site by the contractor and such dimensions to be his responsibility.
- Report all drawing errors, omissions and discrepancies to the architect.
- This document may be issued in an uncontrolled CAD format to enable others to use it as background information to make alterations and/or additions. In that instance the file will be accompanied by a PDF version. It is for those making such alterations and additions to ensure that they make use of current background information. Gibson Thornley Architects accepts no liability for any such alterations or additions to the background information or arising out of changes to background information which occur prior to alterations or additions being made.



GIBSON THORNLEY
 Gibson Thornley Architects Limited
 No. 4 The Hangar
 Perseverance Works
 25-27 Hackney Road
 London E2 7HX
 www.gibsonsthornley.com
 info@gibsonsthornley.com
 +44 (0)20 7729 7064

JOB TITLE
 CHURCHWAY
 DRAWING TITLE
 PROPOSED CROSS SECTION

DRAWN BY	CHECKED	SCALE	STATUS
HO	BG	1:50@A1 1:100@A3	PLANNING

PROJECT	ZONE	TYPE	CLASSIFICATION	DRAWING NO	REVISION
17009	-	AL	[00]	311	P02

Gibson Thornley Architects Limited

www.gibsonthornley.com
info@gibsonthornley.com

No.4 The Hangar
Perseverance Works
25-27 Hackney Road
London E2 7NX

+44 (0)20 7729 7064