



SITE LOCATION PLAN



SCALE (M)  
0 10 20 30

DRAWING NOTES

- - - - - Application Site
- - - - - 41 and 43 Churchway owned by Applicant

REVISION DATE NOTE

| NO | DATE     | DESCRIPTION    |
|----|----------|----------------|
| 01 | 17/09/20 | 01/01 PLANNING |
| 02 |          | 02/02 PLANNING |

TEAM

|                      |                      |
|----------------------|----------------------|
| CLIENT               | Program Group        |
| PLANNING CONSULTANT  | CGO                  |
| STRUCTURAL ENGINEER  | Mason Nevins Design  |
| CIVIL ENGINEER       | Mason Nevins Design  |
| MEP ENGINEER         | Elementa             |
| TRANSPORT CONSULTANT | Carropo Associates   |
| WASTE CONSULTANT     | Carropo Associates   |
| FIRE CONSULTANT      | Elementa             |
| COST CONSULTANT      | Water Level Building |
| PROJECT MANAGER      | Water Level Building |
| ECOLOGIST            | Greenpace            |
| DAYLIGHT CONSULTANT  | Dale Paterson Royle  |
| ACCESS CONSULTANT    | -                    |
| AGENCY CONSULTANT    | ADD                  |
| APPROVED INSPECTOR   | Bureau Veritas       |

GENERAL NOTES

1. Do not scale from this drawing.
2. All dimensions to be checked on site by the contractor and such dimensions to be his responsibility.
3. Report all drawing errors, omissions and discrepancies to the architect.
4. This document may be issued in an uncontrolled CAD format to enable others to use it as background information to make alterations and/or additions. In that instance the file will be accompanied by a PDF version. It is for those making such alterations and additions to ensure that they make use of current background information. Gibson Thornley Architects accepts no liability for any such alterations or additions to the background information or adding out of changes to background information which occur prior to alterations of additions being made.

LOCATION



**GIBSON THORNLEY**  
Gibson Thornley Architects Limited

No. 4 The Hangar www.gibsonthornley.com  
 Pennington Works info@gibsonthornley.com  
 25-27 Hackney Road 444 (0)20 7729 7064  
 London E2 7HX

PROJECT: CHURCHWAY  
 DRAWING TITLE: SITE LOCATION PLAN

DESIGNED BY: BG  
 DRAWN BY: HO  
 CHECKED BY: BG  
 DATE: 1:1250@A4  
 SCALE: PLANNING

PROJECT: 17009  
 ZONE: -  
 TYPE: AL  
 CLASSIFICATION: [00]  
 DRAWING NO: 001  
 REVISION: P01



EXISTING SITE PLAN



PROPOSED SITE PLAN



SCALE (m)



DRAWING NOTES

| REVISION | DATE     | NOTE           |
|----------|----------|----------------|
| P01      | 17.08.18 | DRAFT PLANNING |
| P02      | 18.09.18 | PLANNING       |

| TEAM                 |                       |
|----------------------|-----------------------|
| CLIENT               | Moorgarth Living      |
| PLANNING CONSULTANT  | DPM                   |
| STRUCTURAL ENGINEER  | Mason Navarro Fledge  |
| CIVIL ENGINEER       | Mason Navarro Fledge  |
| MED ENGINEER         | Elementa              |
| TRANSPORT CONSULTANT | Canepari Associates   |
| WASTE CONSULTANT     | Canepari Associates   |
| FIRE CONSULTANT      | Elementa              |
| COST CONSULTANT      | Ryder Lovett Bucknall |
| PROJECT MANAGER      | Ryder Lovett Bucknall |
| ECOLOGIST            | Greengage             |
| DAYLIGHT CONSULTANT  | Deva Patman Redder    |
| ACCESS CONSULTANT    | AAD                   |
| ACOUSTIC CONSULTANT  | AAD                   |
| APPROVED INSPECTOR   | Bureau Veritas        |

GENERAL NOTES  
 1. Do not scale from this drawing.  
 2. All dimensions to be checked on site by the contractor and such dimensions to be his responsibility.  
 3. Report all drawing errors, omissions and discrepancies to the architect.  
 4. This document may be issued in an uncontrolled CAD format to enable others to use it as background information to make alterations and/or additions. In that instance the file will be accompanied by a PDF version. It is for those making such alterations and additions to ensure that they make use of current background information. Gibson Thornley Architects accepts no liability for any such alterations or additions to the background information or arising out of changes to background information which occur prior to alterations of additions being made.

| LOCATION |
|----------|
|          |

**GIBSON THORNLEY**  
 Gibson Thornley Architects Limited  
 No. 4 The Hangar  
 Perseverance Works  
 25-27 Hackney Road  
 London E2 7NX  
 www.gibsonsthornley.com  
 info@gibsonsthornley.com  
 +44 (0)20 7729 7064

JOB TITLE  
**CHURCHWAY**  
 DRAWING TITLE  
**EXISTING AND PROPOSED SITE PLANS**

| DRAWN BY | CHECKED | SCALE                 | STATUS   |
|----------|---------|-----------------------|----------|
| HO       | BG      | 1:500@A1<br>1:1000@A3 | PLANNING |

| PROJECT | ZONE | TYPE | CLASSIFICATION | DRAWING NO | REVISION |
|---------|------|------|----------------|------------|----------|
| 17009   | -    | AL   | [00]           | 002        | P02      |



DRAWING NOTES

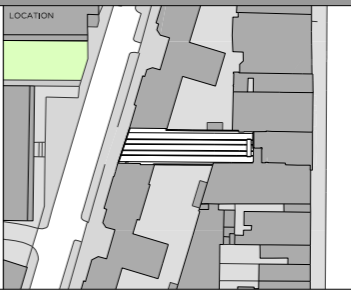
- Proposed Demolition

| REVISION | DATE     | NOTE           |
|----------|----------|----------------|
| P01      | 17.08.18 | DRAFT PLANNING |
| P02      | 14.09.18 | PLANNING       |

| TEAM                 |                       |
|----------------------|-----------------------|
| CLIENT               | Moorpark Living       |
| PLANNING CONSULTANT  | GP9                   |
| STRUCTURAL ENGINEER  | Mason Navarro Pledge  |
| CIVIL ENGINEER       | Mason Navarro Pledge  |
| MEP ENGINEER         | Elementa              |
| TRANSPORT CONSULTANT | Conspiro Associates   |
| WASTE CONSULTANT     | Conspiro Associates   |
| FIRE CONSULTANT      | Elementa              |
| COST CONSULTANT      | Riser Lovett Bucknall |
| PROJECT MANAGER      | Riser Lovett Bucknall |
| ECOLOGIST            | Greengage             |
| DAYLIGHT CONSULTANT  | Delva Patman Redler   |
| ACCESS CONSULTANT    | AAD                   |
| ACOUSTIC CONSULTANT  | AAD                   |
| APPROVED INSPECTOR   | Bureau Veritas        |

GENERAL NOTES

- Do not scale from this drawing.
- All dimensions to be checked on site by the contractor and such dimensions to be his responsibility.
- Report all drawing errors, omissions and discrepancies to the architect.
- This document may be issued in an uncontrolled CAD format to enable others to use it as background information to make alterations and/or additions. In that instance the file will be accompanied by a PDF version. It is for those making such alterations and additions to ensure that they make use of current background information. Gibson Thornley Architects accepts no liability for any such alterations or additions to the background information or arising out of changes to background information which occur prior to alterations or additions being made.

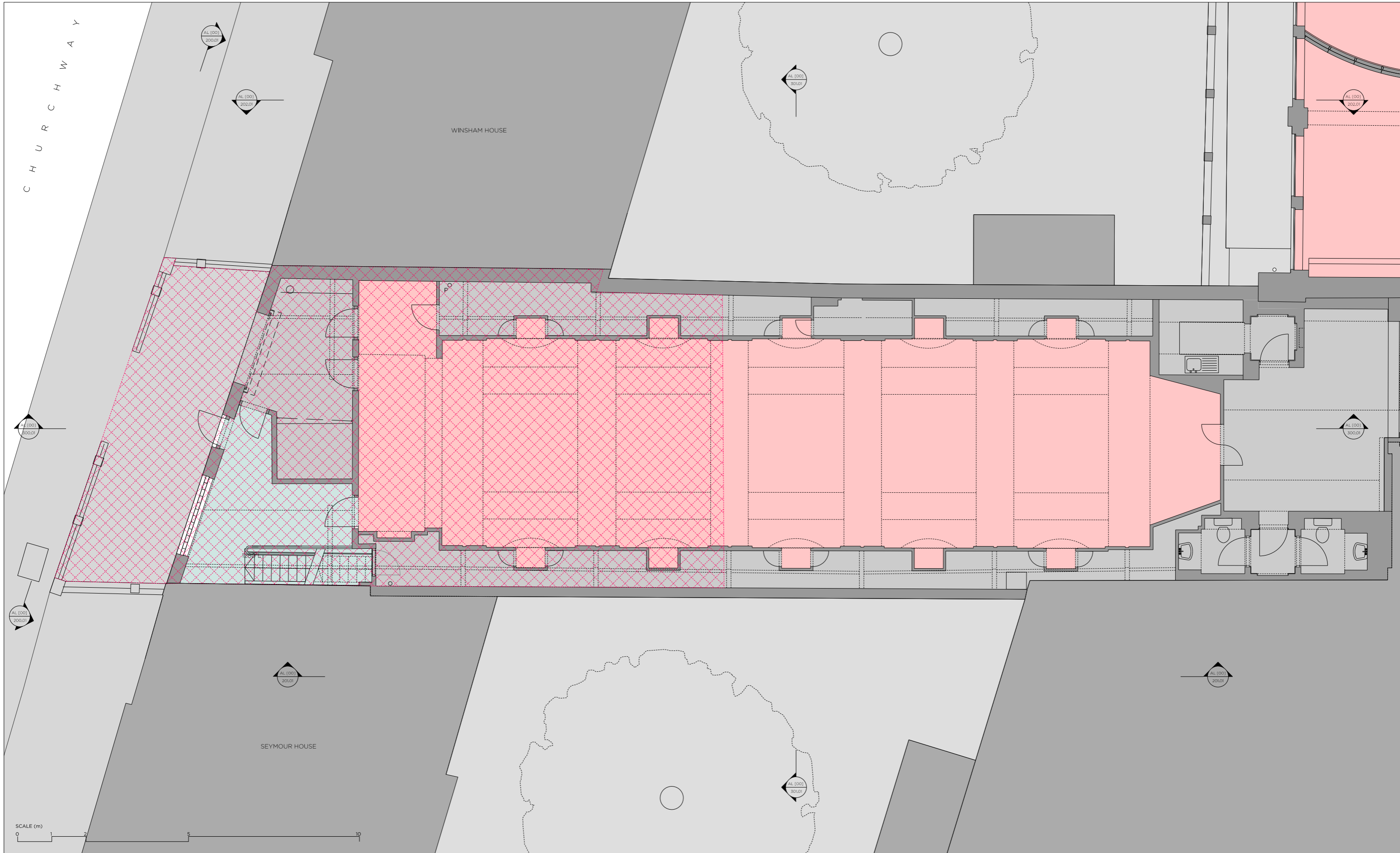


**GIBSON THORNLEY**  
 Gibson Thornley Architects Limited  
 No. 4 The Hangar  
 Perseverance Works  
 25-27 Hackney Road  
 London E2 7NK  
 www.gibsonsthornley.com  
 info@gibsonsthornley.com  
 +44 (0)20 7729 7064

JOB TITLE  
**CHURCHWAY**  
 DRAWING TITLE  
**EXISTING BASEMENT FLOOR PLAN**

|          |         |                     |          |
|----------|---------|---------------------|----------|
| DRAWN BY | CHECKED | SCALE               | STATUS   |
| HO       | BG      | 1:50@A1<br>1:100@A3 | PLANNING |

|         |      |      |                |            |          |
|---------|------|------|----------------|------------|----------|
| PROJECT | ZONE | TYPE | CLASSIFICATION | DRAWING NO | REVISION |
| 17009   | -    | AL   | [00]           | 100        | P02      |



**DRAWING NOTES**  
 - Proposed Demolition

**REVISION**

| REVISION | DATE     | NOTE           |
|----------|----------|----------------|
| P01      | 17.08.18 | DRAFT PLANNING |
| P02      | 18.09.18 | PLANNING       |

**TEAM**

|                             |                       |
|-----------------------------|-----------------------|
| <b>CLIENT</b>               | Moorgarth Living      |
| <b>PLANNING CONSULTANT</b>  | DPM                   |
| <b>STRUCTURAL ENGINEER</b>  | Mason Navarro Hedge   |
| <b>CIVIL ENGINEER</b>       | Mason Navarro Hedge   |
| <b>MED ENGINEER</b>         | Elementa              |
| <b>TRANSPORT CONSULTANT</b> | Canepari Associates   |
| <b>WASTE CONSULTANT</b>     | Canepari Associates   |
| <b>FIRE CONSULTANT</b>      | Elementa              |
| <b>COST CONSULTANT</b>      | Ryder Levett Bucknall |
| <b>PROJECT MANAGER</b>      | Ryder Levett Bucknall |
| <b>ECOLOGIST</b>            | Greengage             |
| <b>DAYLIGHT CONSULTANT</b>  | Deva Patman Redler    |
| <b>ACCESS CONSULTANT</b>    | -                     |
| <b>ACOUSTIC CONSULTANT</b>  | AAD                   |
| <b>APPROVED INSPECTOR</b>   | Bureau Vertus         |

**GENERAL NOTES**

- Do not scale from this drawing.
- All dimensions to be checked on site by the contractor and such dimensions to be his responsibility.
- Report all drawing errors, omissions and discrepancies to the architect.
- This document may be issued in an uncontrolled CAD format to enable others to use it as background information to make alterations and/or additions. In that instance the file will be accompanied by a PDF version. It is for those making such alterations and additions to ensure that they make use of current background information. Gibson Thornley Architects accepts no liability for any such alterations or additions to the background information or arising out of changes to background information which occur prior to alterations or additions being made.

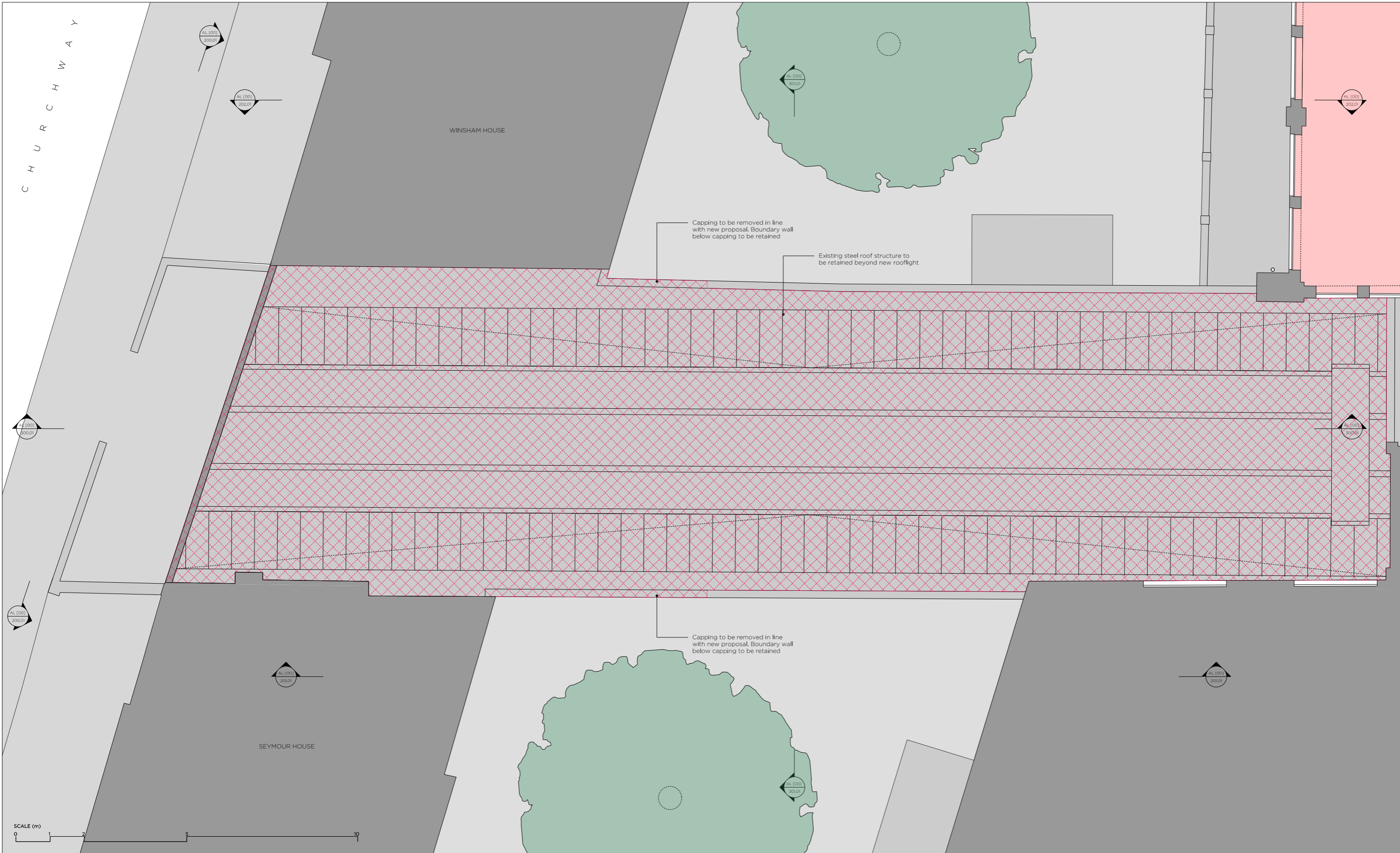
**LOCATION**

**GIBSON THORNLEY**  
 Gibson Thornley Architects Limited  
 No. 4 The Hangar  
 Perseverance Works  
 25-27 Hackney Road  
 London E2 7NX  
 www.gibsonsthornley.com  
 info@gibsonsthornley.com  
 +44 (0)20 7729 7064

**JOB TITLE**  
**CHURCHWAY**  
 EXISTING GROUND FLOOR PLAN

| DRAWN BY | CHECKED | SCALE               | STATUS   |
|----------|---------|---------------------|----------|
| HO       | BG      | 1:50@A1<br>1:100@A3 | PLANNING |

| PROJECT | ZONE | TYPE | CLASSIFICATION | DRAWING NO | REVISION |
|---------|------|------|----------------|------------|----------|
| 17009   | -    | AL   | [00]           | 101        | P02      |



DRAWING NOTES

- Proposed Demolition



| REVISION | DATE     | NOTE           |
|----------|----------|----------------|
| P01      | 17.08.18 | DRAFT PLANNING |
| P02      | 14.05.18 | PLANNING       |

| TEAM                 |                        |
|----------------------|------------------------|
| CLIENT               | Moorgarth Living       |
| PLANNING CONSULTANT  | DPW                    |
| STRUCTURAL ENGINEER  | Mason Navarro Pledge   |
| CIVIL ENGINEER       | Mason Navarro Pledge   |
| MEP ENGINEER         | Elementa               |
| TRANSPORT CONSULTANT | Canisporo Associates   |
| WASTE CONSULTANT     | Canisporo Associates   |
| FIRE CONSULTANT      | Elementa               |
| COST CONSULTANT      | Risler Lovett Bucknall |
| PROJECT MANAGER      | Risler Lovett Bucknall |
| ECOLOGIST            | Greengage              |
| DAYLIGHT CONSULTANT  | Delva Patman Redler    |
| ACCESS CONSULTANT    | AAD                    |
| ACOUSTIC CONSULTANT  | AAD                    |
| APPROVED INSPECTOR   | Bureau Veritas         |

GENERAL NOTES

- Do not scale from this drawing.
- All dimensions to be checked on site by the contractor and such dimensions to be his responsibility.
- Report all drawing errors, omissions and discrepancies to the architect.
- This document may be issued in an uncontrolled CAD format to enable others to use it as background information to make alterations and/or additions. In that instance the file will be accompanied by a PDF version. It is for those making such alterations and additions to ensure that they make use of current background information. Gibson Thornley Architects accepts no liability for any such alterations or additions to the background information or arising out of changes to background information which occur prior to alterations or additions being made.

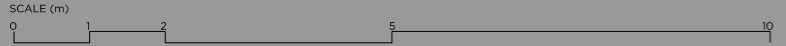
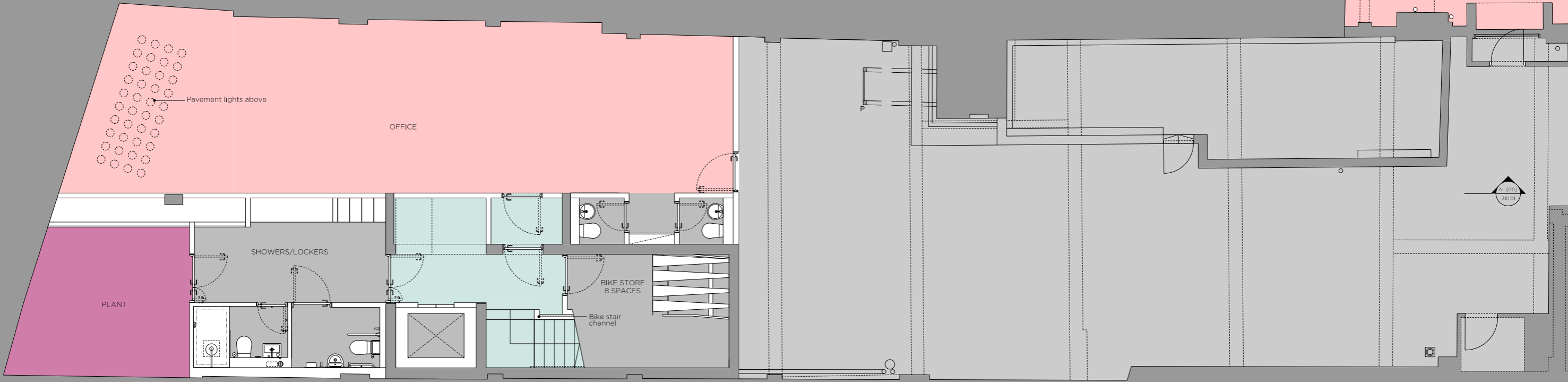


**GIBSON THORNLEY**  
 Gibson Thornley Architects Limited  
 No. 4 The Hangar  
 Perseverance Works  
 25-27 Hackney Road  
 London E2 7NX  
 www.gibsonsthornley.com  
 info@gibsonsthornley.com  
 +44 (0)20 7729 7064

JOB TITLE  
**CHURCHWAY**  
 DRAWING TITLE  
**EXISTING ROOF PLAN**

| DRAWN BY | CHECKED | SCALE               | STATUS   |
|----------|---------|---------------------|----------|
| HO       | BG      | 1:50@A1<br>1:100@A3 | PLANNING |

| PROJECT | ZONE | TYPE | CLASSIFICATION | DRAWING NO | REVISION |
|---------|------|------|----------------|------------|----------|
| 17009   | -    | AL   | [00]           | 102        | P02      |



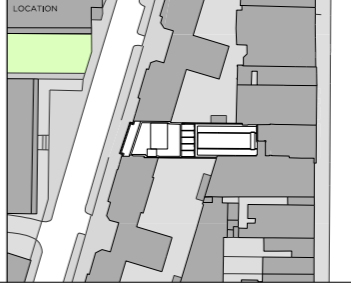
DRAWING NOTES

| REVISION | DATE     | NOTE           |
|----------|----------|----------------|
| P01      | 17.08.18 | DRAFT PLANNING |
| P02      | 14.09.18 | PLANNING       |

| TEAM                 | MEMBER                |
|----------------------|-----------------------|
| CLIENT               | Moorgarth Living      |
| PLANNING CONSULTANT  | DPM                   |
| STRUCTURAL ENGINEER  | Mason Navarro Fledge  |
| CIVIL ENGINEER       | Mason Navarro Fledge  |
| MEP ENGINEER         | Elementa              |
| TRANSPORT CONSULTANT | Canepari Associates   |
| WASTE CONSULTANT     | Canepari Associates   |
| FIRE CONSULTANT      | Elementa              |
| COST CONSULTANT      | Ryder Levett Bucknall |
| PROJECT MANAGER      | Ryder Levett Bucknall |
| ECOLOGIST            | Greengage             |
| DAYLIGHT CONSULTANT  | Deva Patman Redler    |
| ACCESS CONSULTANT    | -                     |
| ACOUSTIC CONSULTANT  | AAD                   |
| APPROVED INSPECTOR   | Bureau Veritas        |

**GENERAL NOTES**

- Do not scale from this drawing.
- All dimensions to be checked on site by the contractor and such dimensions to be his responsibility.
- Report all drawing errors, omissions and discrepancies to the architect.
- This document may be issued in an uncontrolled CAD format to enable others to use it as background information to make alterations and/or additions. In that instance the file will be accompanied by a PDF version. It is for those making such alterations and additions to ensure that they make use of current background information. Gibson Thornley Architects accepts no liability for any such alterations or additions to the background information or arising out of changes to background information which occur prior to alterations of additions being made.

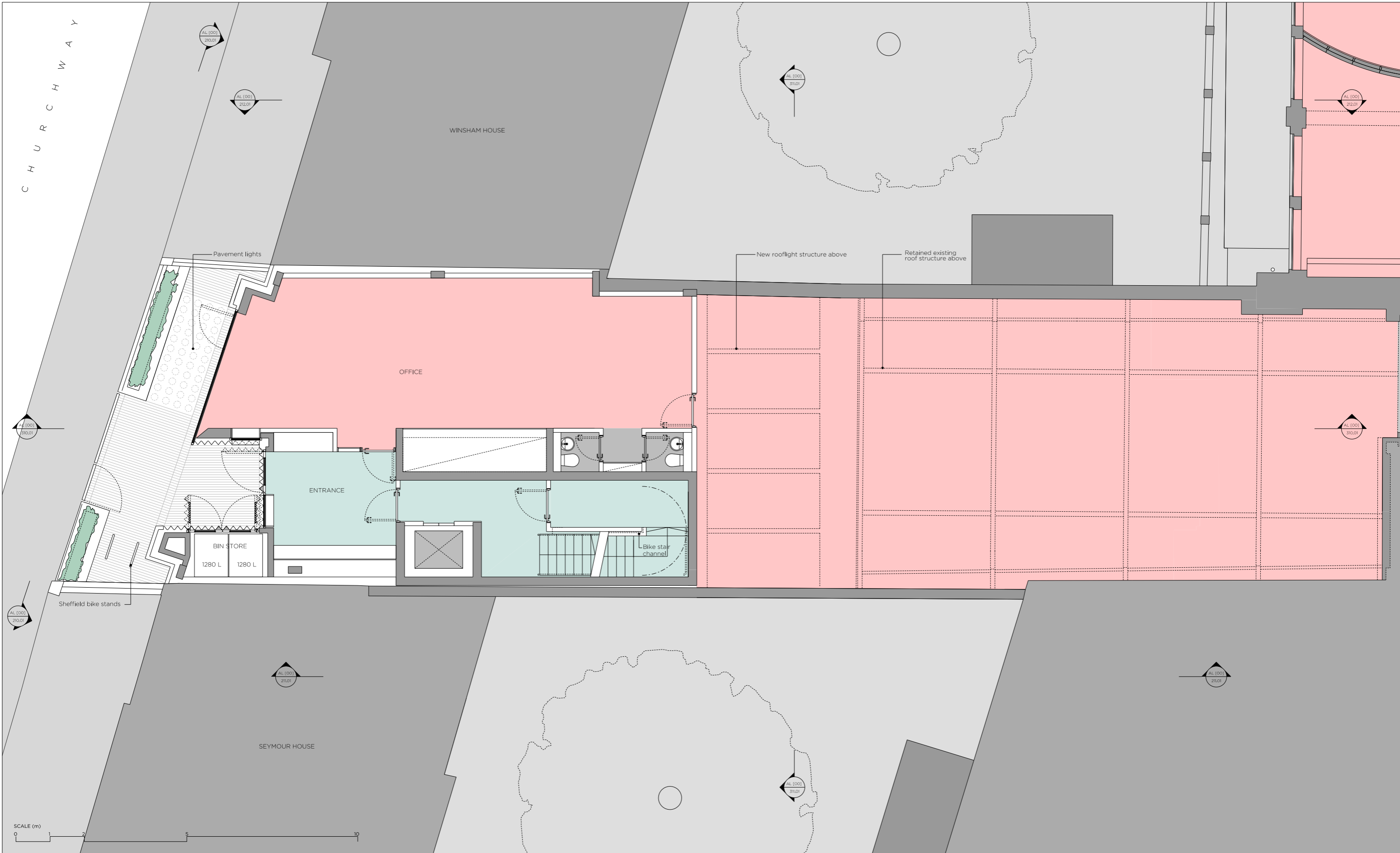


**GIBSON THORNLEY**  
 Gibson Thornley Architects Limited  
 No. 4 The Hangar  
 Perseverance Works  
 25-27 Hackney Road  
 London E2 7NX  
 www.gibsonsthornley.com  
 info@gibsonsthornley.com  
 +44 (0)20 7729 7064

**JOB TITLE**  
**CHURCHWAY**  
**PROPOSED BASEMENT FLOOR PLAN**

|          |         |                     |          |
|----------|---------|---------------------|----------|
| DRAWN BY | CHECKED | SCALE               | STATUS   |
| HO       | BG      | 1:50@A1<br>1:100@A3 | PLANNING |

|         |      |      |                |            |          |
|---------|------|------|----------------|------------|----------|
| PROJECT | ZONE | TYPE | CLASSIFICATION | DRAWING NO | REVISION |
| 17009   | -    | AL   | [00]           | 110        | P02      |



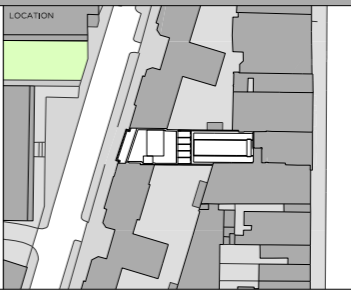
DRAWING NOTES

| REVISION | DATE     | NOTE           |
|----------|----------|----------------|
| P01      | 17.08.18 | DRAFT PLANNING |
| P02      | 14.09.18 | PLANNING       |

| TEAM                 |                       |
|----------------------|-----------------------|
| CLIENT               | Moorgarth Living      |
| PLANNING CONSULTANT  | GP9                   |
| STRUCTURAL ENGINEER  | Mason Navarro Pledge  |
| CIVIL ENGINEER       | Mason Navarro Pledge  |
| MEP ENGINEER         | Elements              |
| TRANSPORT CONSULTANT | Conspiro Associates   |
| WASTE CONSULTANT     | Conspiro Associates   |
| FIRE CONSULTANT      | Elements              |
| COST CONSULTANT      | Risér Lovett Bucknall |
| PROJECT MANAGER      | Risér Lovett Bucknall |
| ECOLOGIST            | Greengage             |
| DAYLIGHT CONSULTANT  | Delva Patman Redler   |
| ACCESS CONSULTANT    | AAD                   |
| ACOUSTIC CONSULTANT  | AAD                   |
| APPROVED INSPECTOR   | Bureau Veritas        |

**GENERAL NOTES**

- Do not scale from this drawing.
- All dimensions to be checked on site by the contractor and such dimensions to be his responsibility.
- Report all drawing errors, omissions and discrepancies to the architect.
- This document may be issued in an uncontrolled CAD format to enable others to use it as background information to make alterations and/or additions. In that instance the file will be accompanied by a PDF version. It is for those making such alterations and additions to ensure that they make use of current background information. Gibson Thornley Architects accepts no liability for any such alterations or additions to the background information or arising out of changes to background information which occur prior to alterations or additions being made.

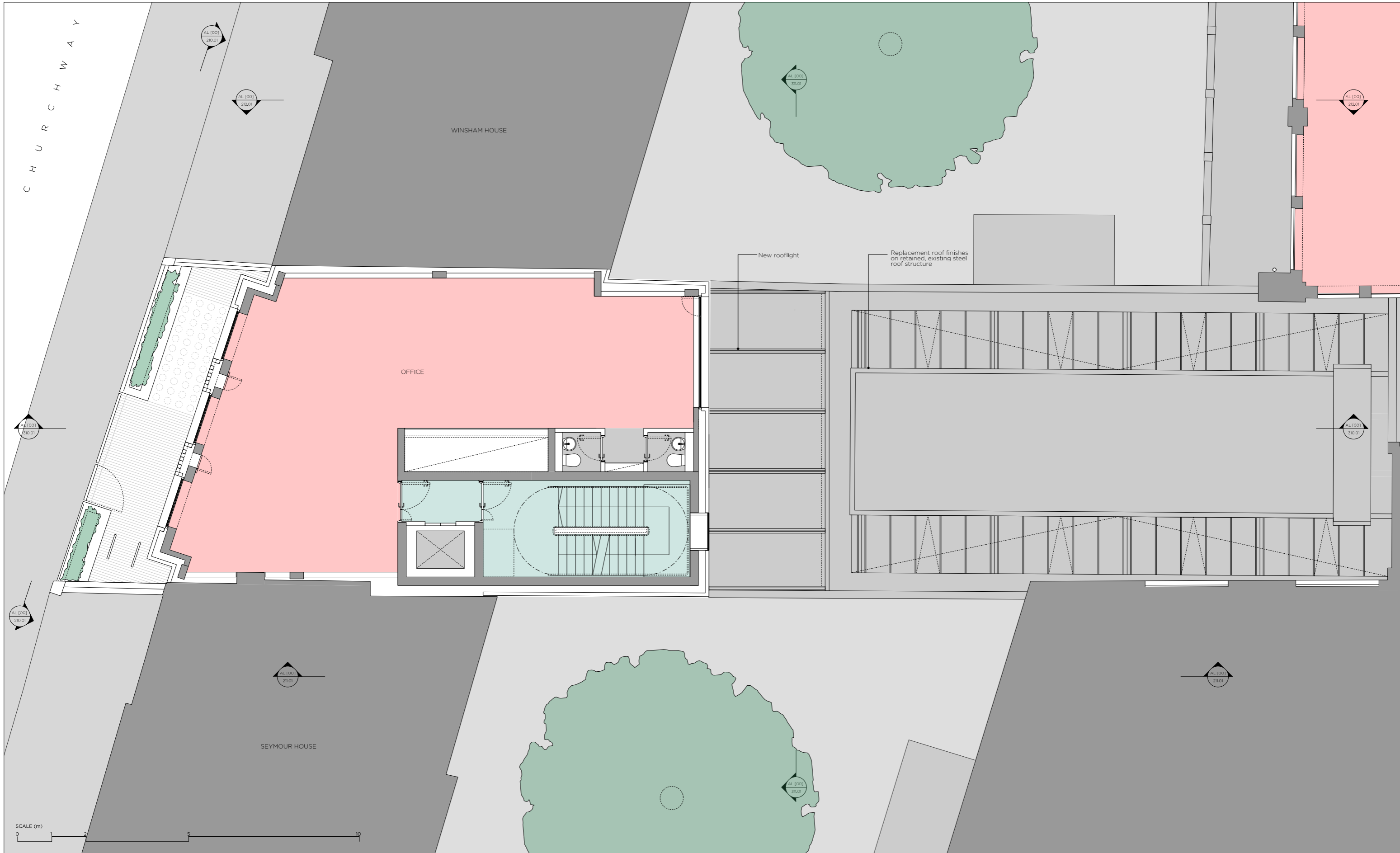


**GIBSON THORNLEY**  
 Gibson Thornley Architects Limited  
 No. 4 The Hangar  
 Perseverance Works  
 25-27 Hackney Road  
 London E2 7NK  
 www.gibsonsthornley.com  
 info@gibsonsthornley.com  
 +44 (0)20 7729 7064

**JOB TITLE**  
 CHURCHWAY  
 PROPOSED GROUND FLOOR PLAN

|          |         |                     |          |
|----------|---------|---------------------|----------|
| DRAWN BY | CHECKED | SCALE               | STATUS   |
| HO       | BG      | 1:50@A1<br>1:100@A3 | PLANNING |

|         |      |      |                |            |          |
|---------|------|------|----------------|------------|----------|
| PROJECT | ZONE | TYPE | CLASSIFICATION | DRAWING NO | REVISION |
| 17009   | -    | AL   | [00]           | 111        | P02      |



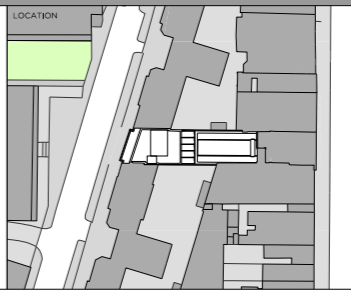
DRAWING NOTES

| REVISION | DATE     | NOTE           |
|----------|----------|----------------|
| P01      | 17.08.18 | DRAFT PLANNING |
| P02      | 14.09.18 | PLANNING       |

| TEAM                 |                       |
|----------------------|-----------------------|
| CLIENT               | Moorgarth Living      |
| PLANNING CONSULTANT  | DPM                   |
| STRUCTURAL ENGINEER  | Mason Navarro Pledge  |
| CIVIL ENGINEER       | Mason Navarro Pledge  |
| MEP ENGINEER         | Elementa              |
| TRANSPORT CONSULTANT | Canepari Associates   |
| WASTE CONSULTANT     | Canepari Associates   |
| FIRE CONSULTANT      | Elementa              |
| COST CONSULTANT      | Ryder Levett Bucknall |
| PROJECT MANAGER      | Ryder Levett Bucknall |
| ECOLOGIST            | Greengage             |
| DAYLIGHT CONSULTANT  | Deva Patman Redler    |
| ACCESS CONSULTANT    | AAD                   |
| ACOUSTIC CONSULTANT  | AAD                   |
| APPROVED INSPECTOR   | Bureau Veritas        |

**GENERAL NOTES**

- Do not scale from this drawing.
- All dimensions to be checked on site by the contractor and such dimensions to be his responsibility.
- Report all drawing errors, omissions and discrepancies to the architect.
- This document may be issued in an uncontrolled CAD format to enable others to use it as background information to make alterations and/or additions. In that instance the file will be accompanied by a PDF version. It is for those making such alterations and additions to ensure that they make use of current background information. Gibson Thornley Architects accepts no liability for any such alterations or additions to the background information or arising out of changes to background information which occur prior to alterations of additions being made.



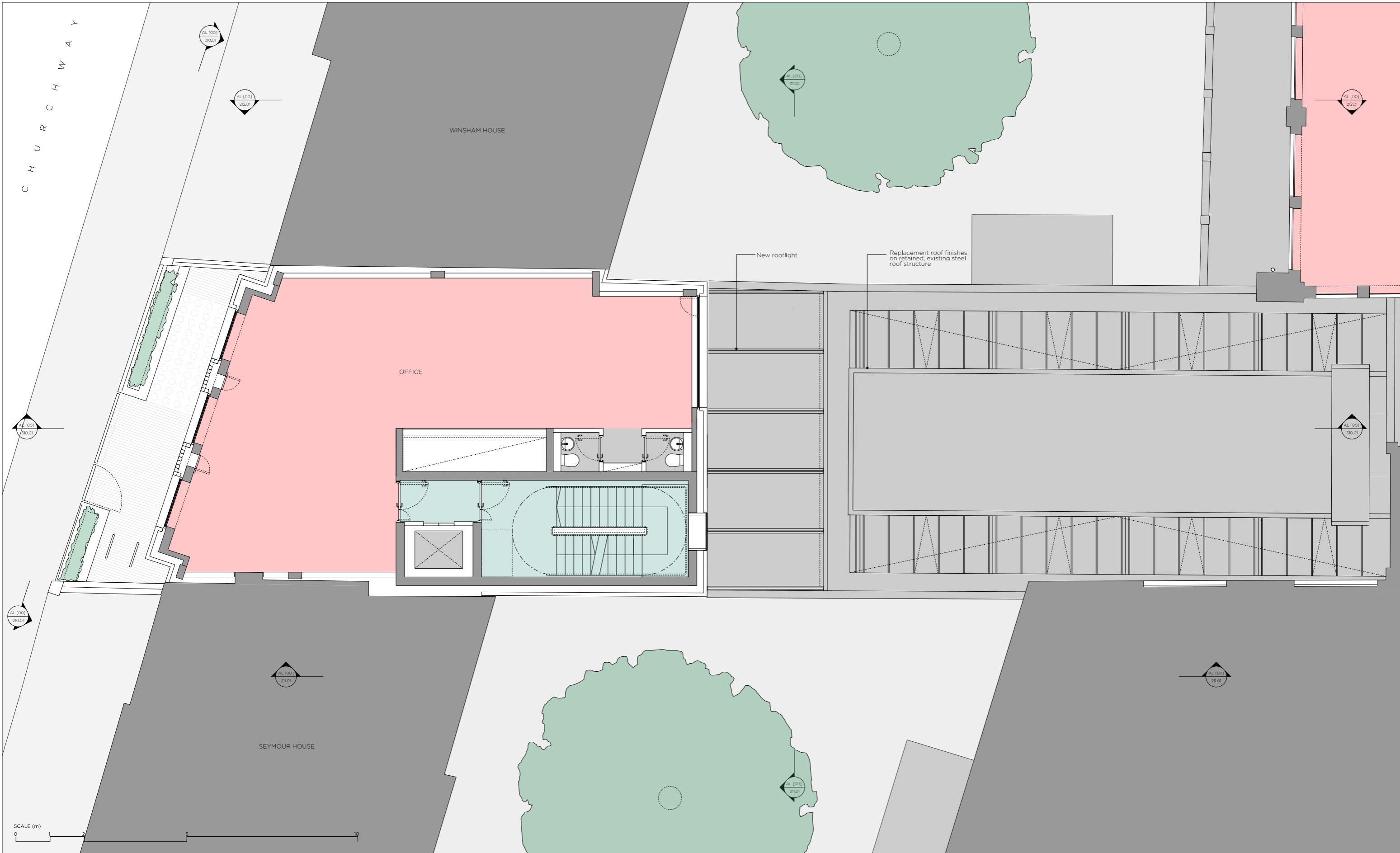
**GIBSON THORNLEY**  
 Gibson Thornley Architects Limited  
 No. 4 The Hangar  
 Perseverance Works  
 25-27 Hackney Road  
 London E2 7NX  
 www.gibsonsthornley.com  
 info@gibsonsthornley.com  
 +44 (0)20 7729 7064

**JOB TITLE**  
**CHURCHWAY**  
**PROPOSED FIRST FLOOR PLAN**

| DRAWN BY | CHECKED | SCALE               | STATUS   |
|----------|---------|---------------------|----------|
| HO       | BG      | 1:50@A1<br>1:100@A3 | PLANNING |

| PROJECT | ZONE | TYPE | CLASSIFICATION | DRAWING NO | REVISION |
|---------|------|------|----------------|------------|----------|
| 17009   | -    | AL   | [00]           | 112        | P02      |





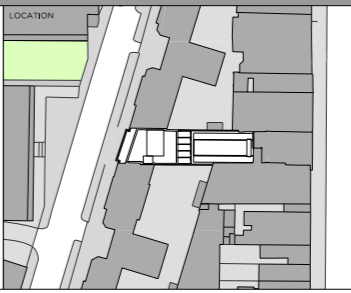
DRAWING NOTES

SCALE (m)  
0 1 2 5 10

| REVISION | DATE     | NOTE           |
|----------|----------|----------------|
| P01      | 17.08.18 | DRAFT PLANNING |
| P02      | 14.09.18 | PLANNING       |

| CLIENT               | Moorgarth Living      |
|----------------------|-----------------------|
| PLANNING CONSULTANT  | GP9                   |
| STRUCTURAL ENGINEER  | Mason Navarro Pledge  |
| CIVIL ENGINEER       | Mason Navarro Pledge  |
| MEP ENGINEER         | Elements              |
| TRANSPORT CONSULTANT | Conspiro Associates   |
| WASTE CONSULTANT     | Conspiro Associates   |
| FIRE CONSULTANT      | Elements              |
| COST CONSULTANT      | Riser Lovett Bucknall |
| PROJECT MANAGER      | Riser Lovett Bucknall |
| ECOLOGIST            | Greengage             |
| DAYLIGHT CONSULTANT  | Delva Patman Redler   |
| ACCESS CONSULTANT    | AAD                   |
| ACOUSTIC CONSULTANT  | AAD                   |
| APPROVED INSPECTOR   | Bureau Veritas        |

GENERAL NOTES  
 1. Do not scale from this drawing.  
 2. All dimensions to be checked on site by the contractor and such dimensions to be his responsibility.  
 3. Report all drawing errors, omissions and discrepancies to the architect.  
 4. This document may be issued in an uncontrolled CAD format to enable others to use it as background information to make alterations and/or additions. In that instance the file will be accompanied by a PDF version. It is for those making such alterations and additions to ensure that they make use of current background information. Gibson Thornley Architects accepts no liability for any such alterations or additions to the background information or arising out of changes to background information which occur prior to alterations or additions being made.

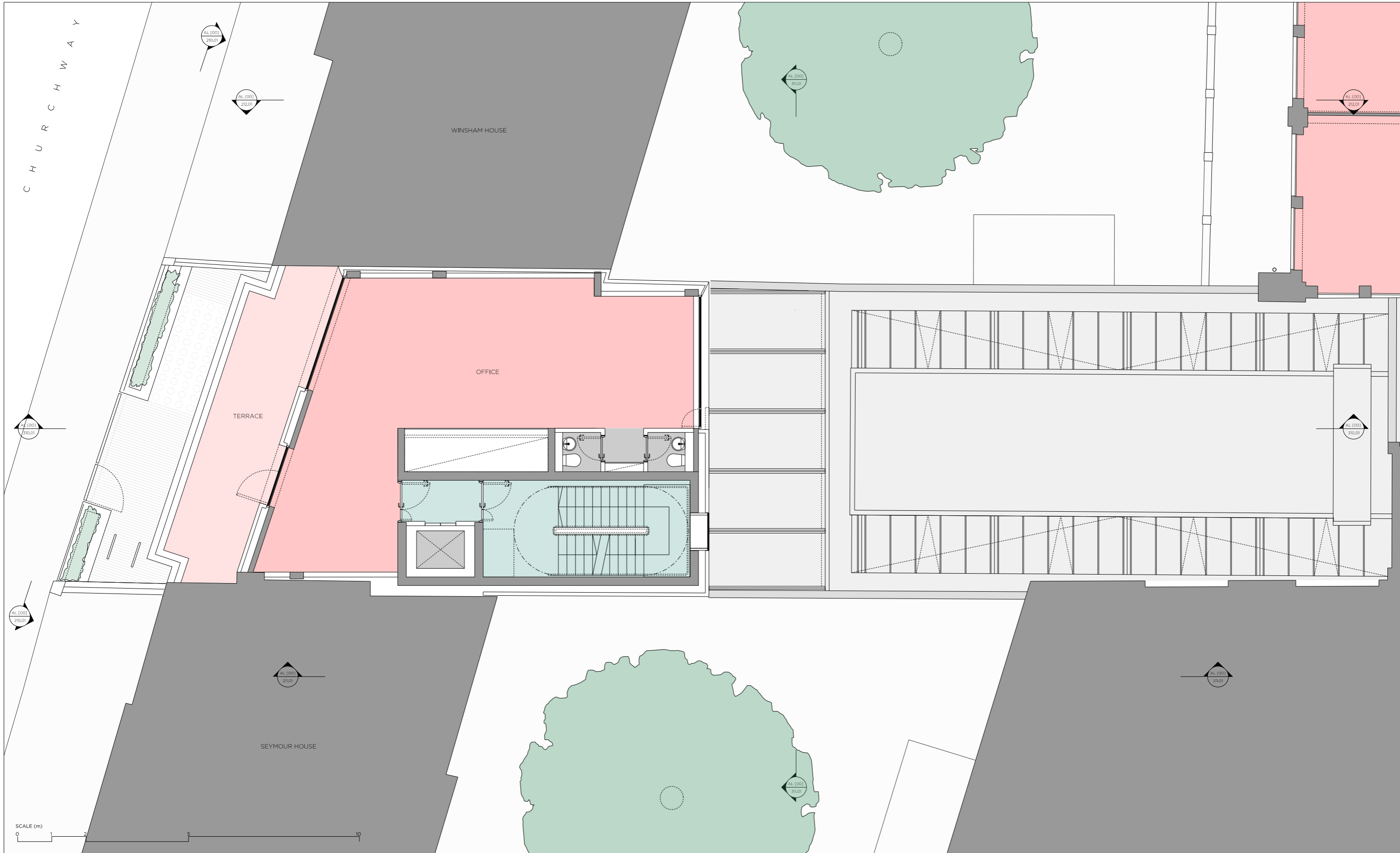


**GIBSON THORNLEY**  
 Gibson Thornley Architects Limited  
 No. 4 The Hangar  
 Perseverance Works  
 25-27 Hackney Road  
 London E2 7NK  
 www.gibsonsthornley.com  
 info@gibsonsthornley.com  
 +44 (0)20 7729 7064

JOB TITLE  
**CHURCHWAY**  
 DRAWING TITLE  
**PROPOSED SECOND FLOOR PLAN**

| DRAWN BY | CHECKED | SCALE               | STATUS   |
|----------|---------|---------------------|----------|
| HO       | BG      | 1:50@A1<br>1:100@A3 | PLANNING |

| PROJECT | ZONE | TYPE | CLASSIFICATION | DRAWING NO | REVISION |
|---------|------|------|----------------|------------|----------|
| 17009   | -    | AL   | [00]           | 113        | P02      |



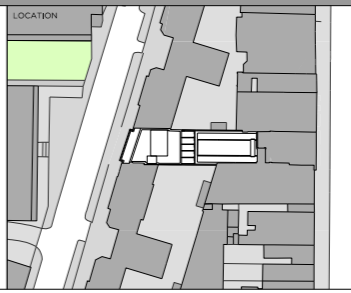
DRAWING NOTES

SCALE (m)  
0 1 2 5 10

| REVISION | DATE     | NOTE           |
|----------|----------|----------------|
| P01      | 17.08.18 | DRAFT PLANNING |
| P02      | 18.09.18 | PLANNING       |

| TEAM                 | MEMBER                |
|----------------------|-----------------------|
| CLIENT               | Moorgarth Living      |
| PLANNING CONSULTANT  | DPM                   |
| STRUCTURAL ENGINEER  | Mason Navarro Fledge  |
| CIVIL ENGINEER       | Mason Navarro Fledge  |
| MED ENGINEER         | Elementa              |
| TRANSPORT CONSULTANT | Canepari Associates   |
| WASTE CONSULTANT     | Canepari Associates   |
| FIRE CONSULTANT      | Elementa              |
| COST CONSULTANT      | Ryder Levett Bucknall |
| PROJECT MANAGER      | Ryder Levett Bucknall |
| ECOLOGIST            | Greengage             |
| DAYLIGHT CONSULTANT  | Deva Patman Redler    |
| ACCESS CONSULTANT    | AAD                   |
| ACOUSTIC CONSULTANT  | AAD                   |
| APPROVED INSPECTOR   | Bureau Vertas         |

GENERAL NOTES  
 1. Do not scale from this drawing.  
 2. All dimensions to be checked on site by the contractor and such dimensions to be his responsibility.  
 3. Report all drawing errors, omissions and discrepancies to the architect.  
 4. This document may be issued in an uncontrolled CAD format to enable others to use it as background information to make alterations and/or additions. In that instance the file will be accompanied by a PDF version. It is for those making such alterations and additions to ensure that they make use of current background information. Gibson Thornley Architects accepts no liability for any such alterations or additions to the background information or arising out of changes to background information which occur prior to alterations of additions being made.

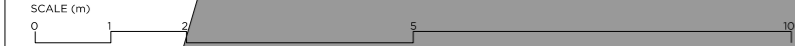


**GIBSON THORNLEY**  
 Gibson Thornley Architects Limited  
 No. 4 The Hangar  
 Perseverance Works  
 25-27 Hackney Road  
 London E2 7NX  
 www.gibsonsthornley.com  
 info@gibsonsthornley.com  
 +44 (0)20 7729 7064

JOB TITLE  
**CHURCHWAY**  
 DRAWING TITLE  
**PROPOSED THIRD FLOOR PLAN**

| DRAWN BY | CHECKED | SCALE               | STATUS   |
|----------|---------|---------------------|----------|
| HO       | BG      | 1:50@A1<br>1:100@A3 | PLANNING |

| PROJECT | ZONE | TYPE | CLASSIFICATION | DRAWING NO | REVISION |
|---------|------|------|----------------|------------|----------|
| 17009   | -    | AL   | [00]           | 114        | P02      |

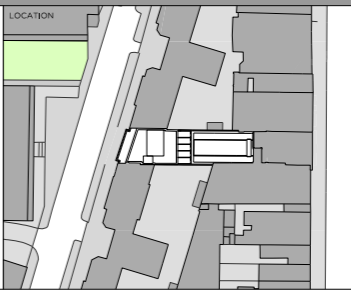


DRAWING NOTES

| REVISION | DATE     | NOTE           |
|----------|----------|----------------|
| P01      | 17.08.18 | DRAFT PLANNING |
| P02      | 14.09.18 | PLANNING       |

| TEAM                 |                       |
|----------------------|-----------------------|
| CLIENT               | Moorgarth Living      |
| PLANNING CONSULTANT  | GP9                   |
| STRUCTURAL ENGINEER  | Mason Navarro Pledge  |
| CIVIL ENGINEER       | Mason Navarro Pledge  |
| MEP ENGINEER         | Elementa              |
| TRANSPORT CONSULTANT | Consporo Associates   |
| WASTE CONSULTANT     | Consporo Associates   |
| FIRE CONSULTANT      | Elementa              |
| COST CONSULTANT      | Riser Lovett Bucknall |
| PROJECT MANAGER      | Riser Lovett Bucknall |
| ECOLOGIST            | Greengage             |
| DAYLIGHT CONSULTANT  | Delva Patman Redler   |
| ACCESS CONSULTANT    | AAD                   |
| APPROVED INSPECTOR   | Bureau Veritas        |

GENERAL NOTES  
 1. Do not scale from this drawing.  
 2. All dimensions to be checked on site by the contractor and such dimensions to be his responsibility.  
 3. Report all drawing errors, omissions and discrepancies to the architect.  
 4. This document may be issued in an uncontrolled CAD format to enable others to use it as background information to make alterations and/or additions. In that instance the file will be accompanied by a PDF version. It is for those making such alterations and additions to ensure that they make use of current background information. Gibson Thornley Architects accepts no liability for any such alterations or additions to the background information or arising out of changes to background information which occur prior to alterations of additions being made.



**GIBSON THORNLEY**  
 Gibson Thornley Architects Limited  
 No. 4 The Hangar  
 Perseverance Works  
 25-27 Hackney Road  
 London E2 7NK  
 www.gibsonsthornley.com  
 info@gibsonsthornley.com  
 +44 (0)20 7729 7064

JOB TITLE  
**CHURCHWAY**  
 DRAWING TITLE  
**PROPOSED ROOF PLAN**

DRAWN BY: **HO** CHECKED: **BG** SCALE: **1:50@A1** STATUS: **PLANNING**  
 CHURCHWAY | DESIGN ACCESS STATEMENT  
**1:100@A3**

| PROJECT | ZONE | TYPE | CLASSIFICATION | DRAWING NO. | REVISION |
|---------|------|------|----------------|-------------|----------|
| 17009   | -    | AL   | [00]           | 115         | P02      |