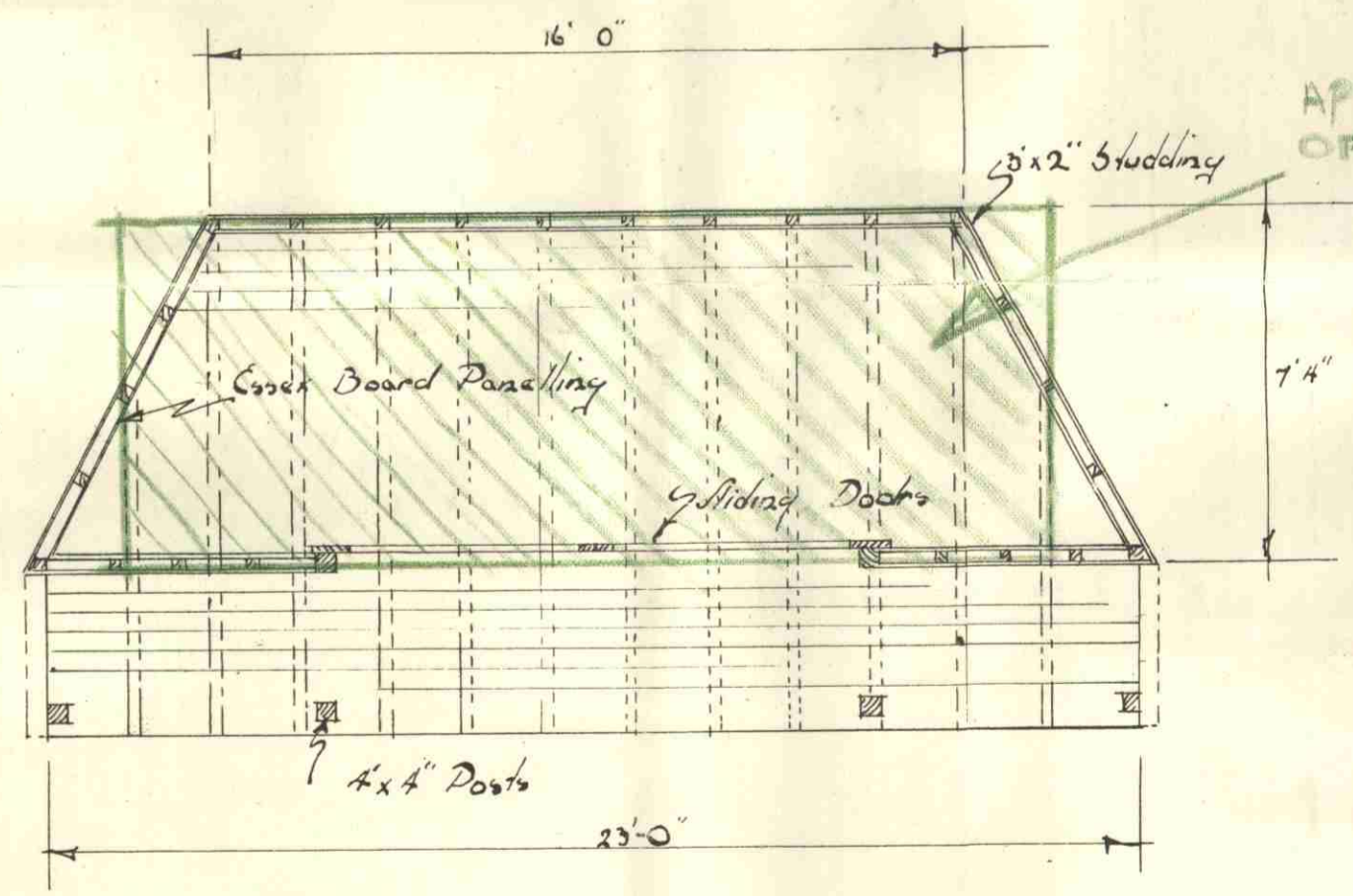
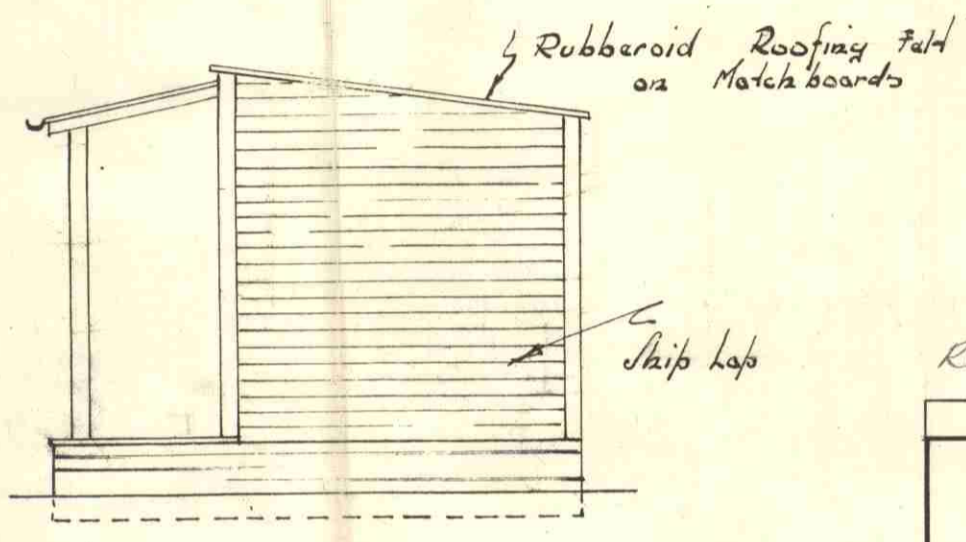
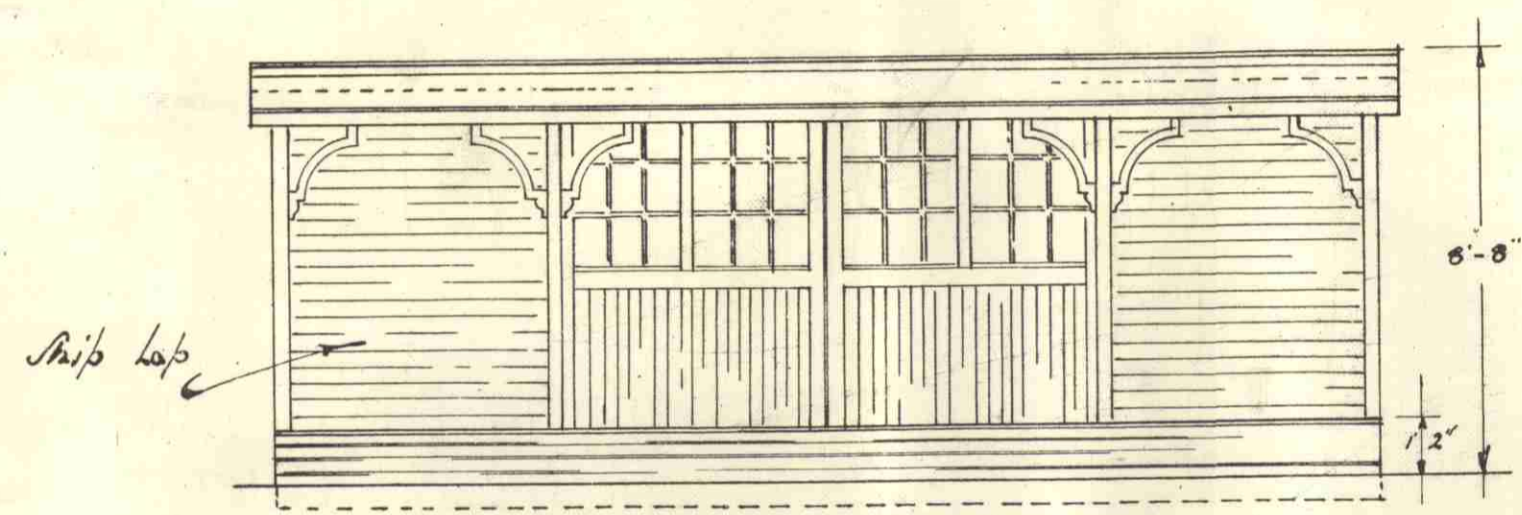


PROPOSED REPLACEMENT OF DILAPIDATED BUILDING AT "THE EDINBURGH CASTLE" D.H.
 MORNINGTON ROAD, REGENTS PARK FOR MESSRS. CHARRINGTON & CO. LTD..

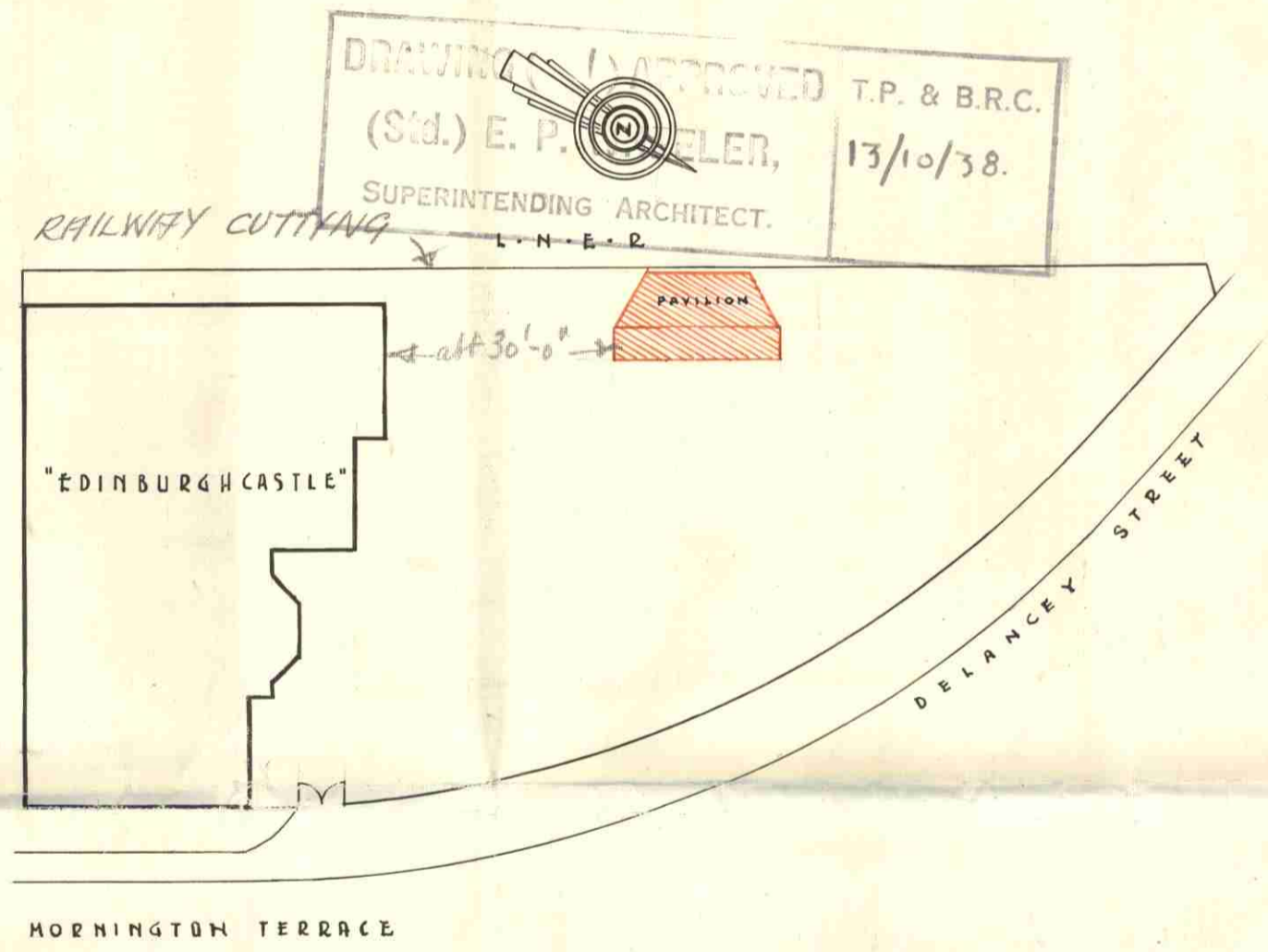
SCALE: ONE INCH EQUALS FOUR FEET.

L.C.C.
 ARCHITECTS DEPT
 20 SEP. 1938 - 136240

PRESENTED TO
 13 OCT 1938
 TOWN PLANNING AND BUILDING
 REGULATION COMMITTEE
 REGD No. 51518



APPROXIMATE SIZE OF EXISTING BUILDING



DRAWING APPROVED T.P. & B.R.C.
 (Std.) E. P. DELER, 13/10/38.
 SUPERINTENDING ARCHITECT.

DWG. NO 1803/E SEPT '38
 J. BURLEY & SONS LTD.
J. Burley

19 6	136 6
7 4	6 6
23 0	69
3	212