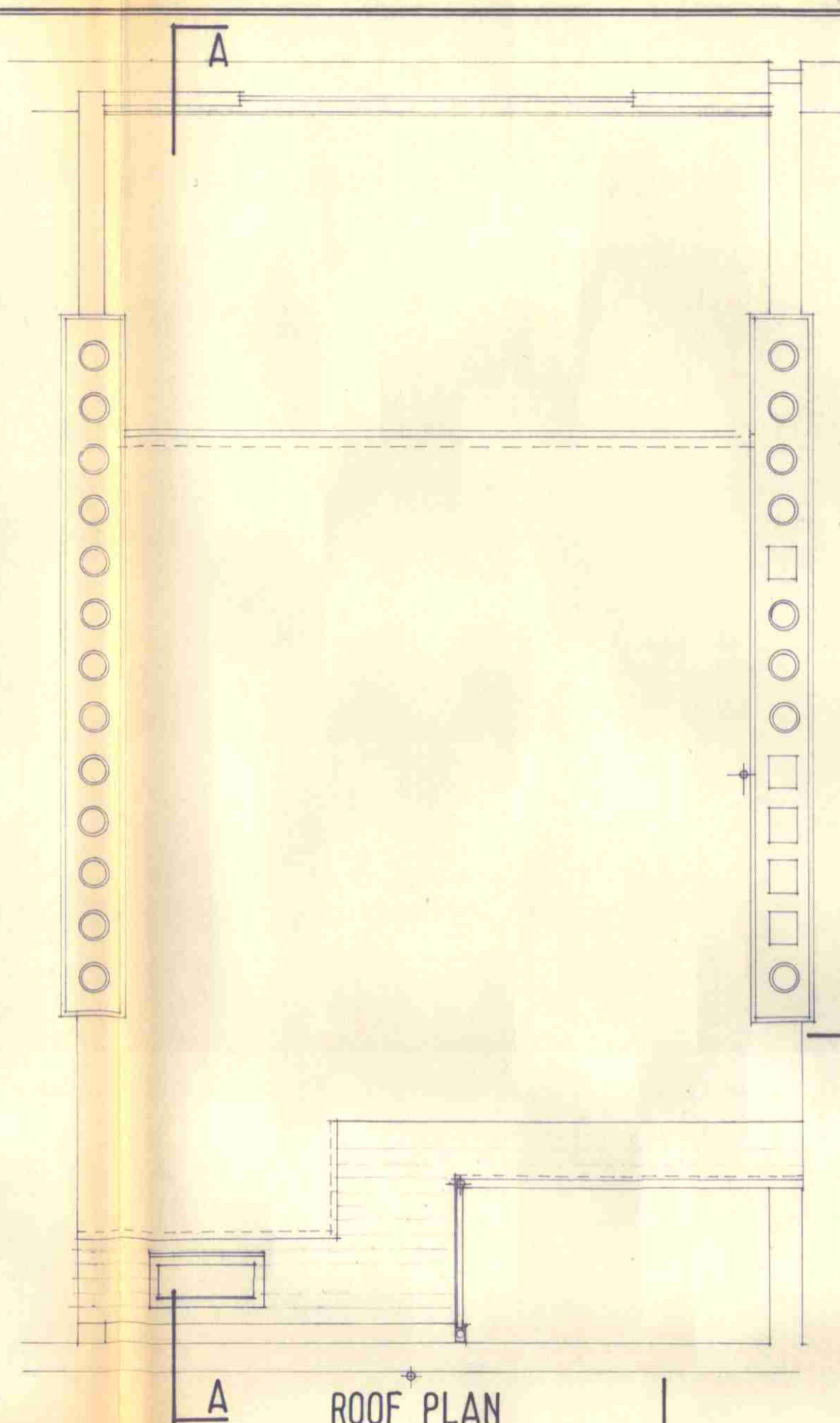
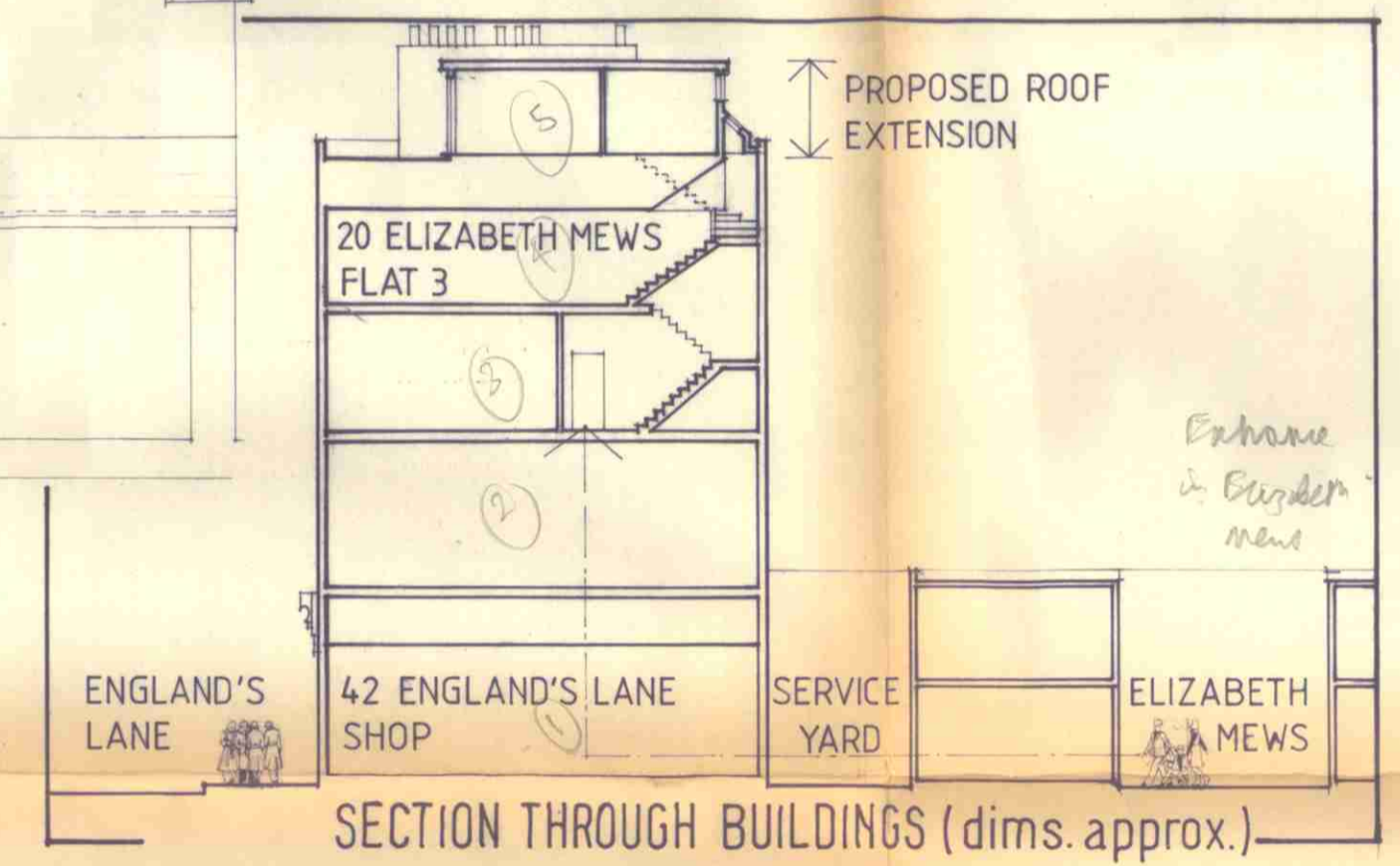


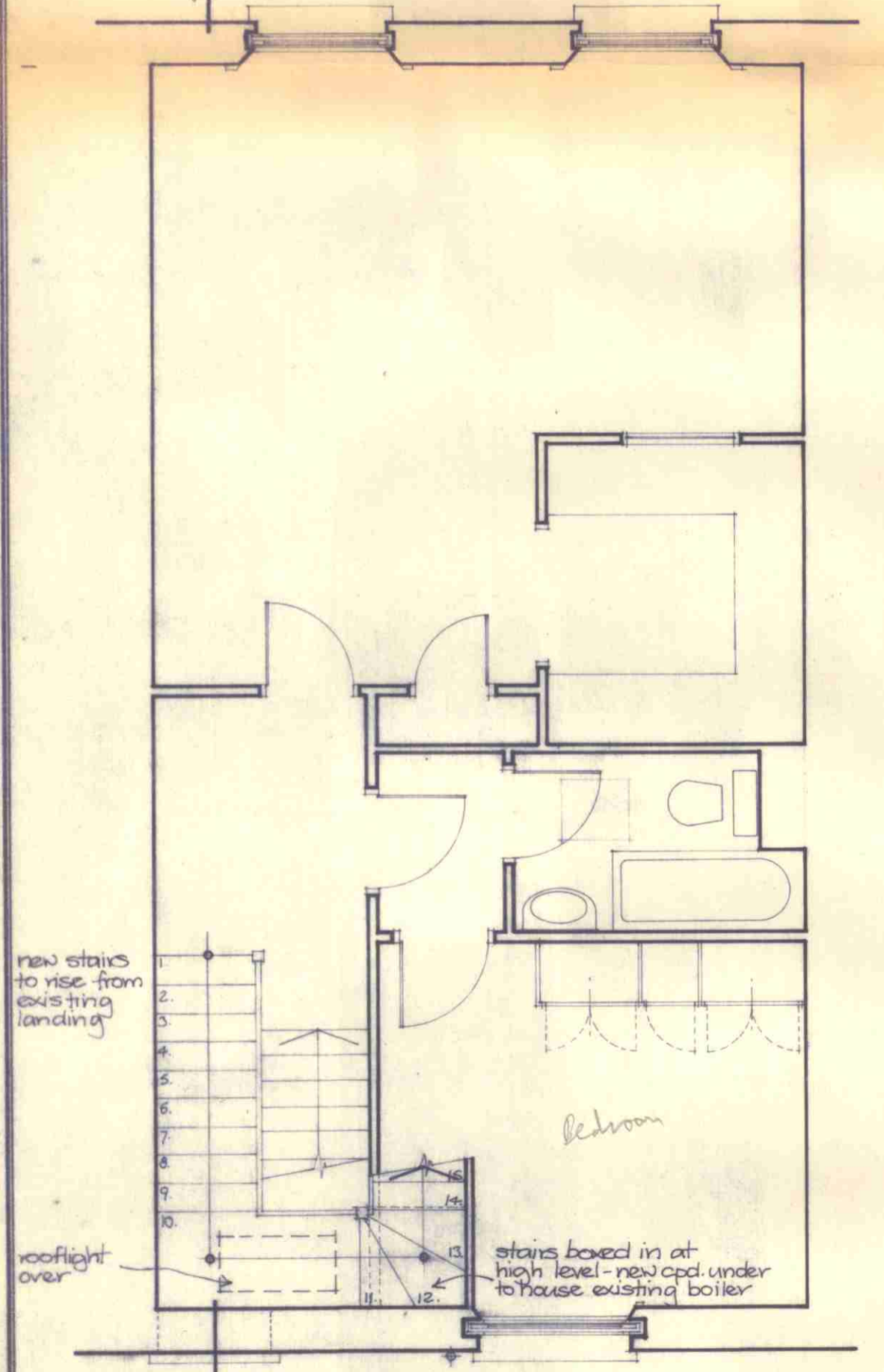
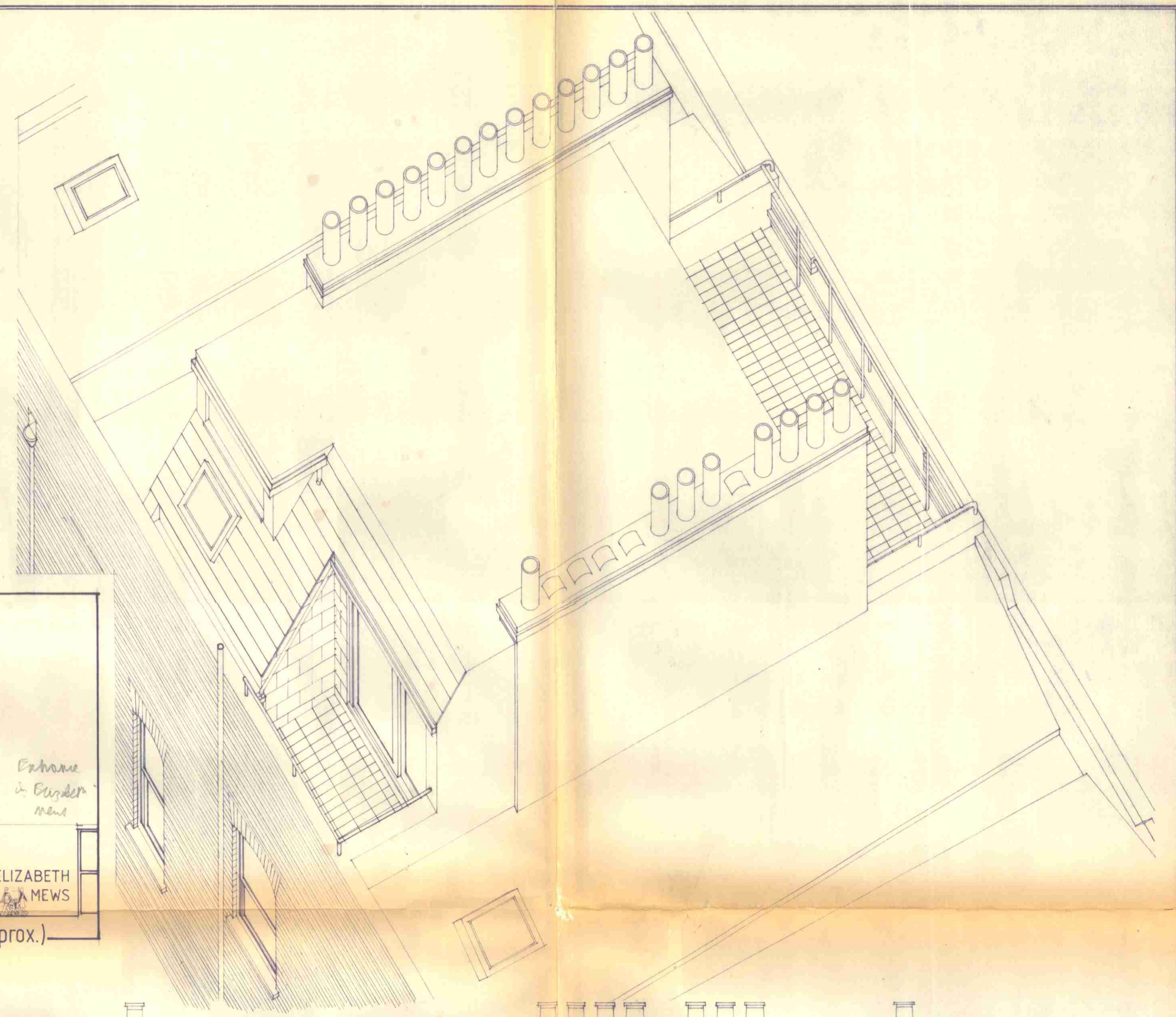
NEW 4TH FLOOR



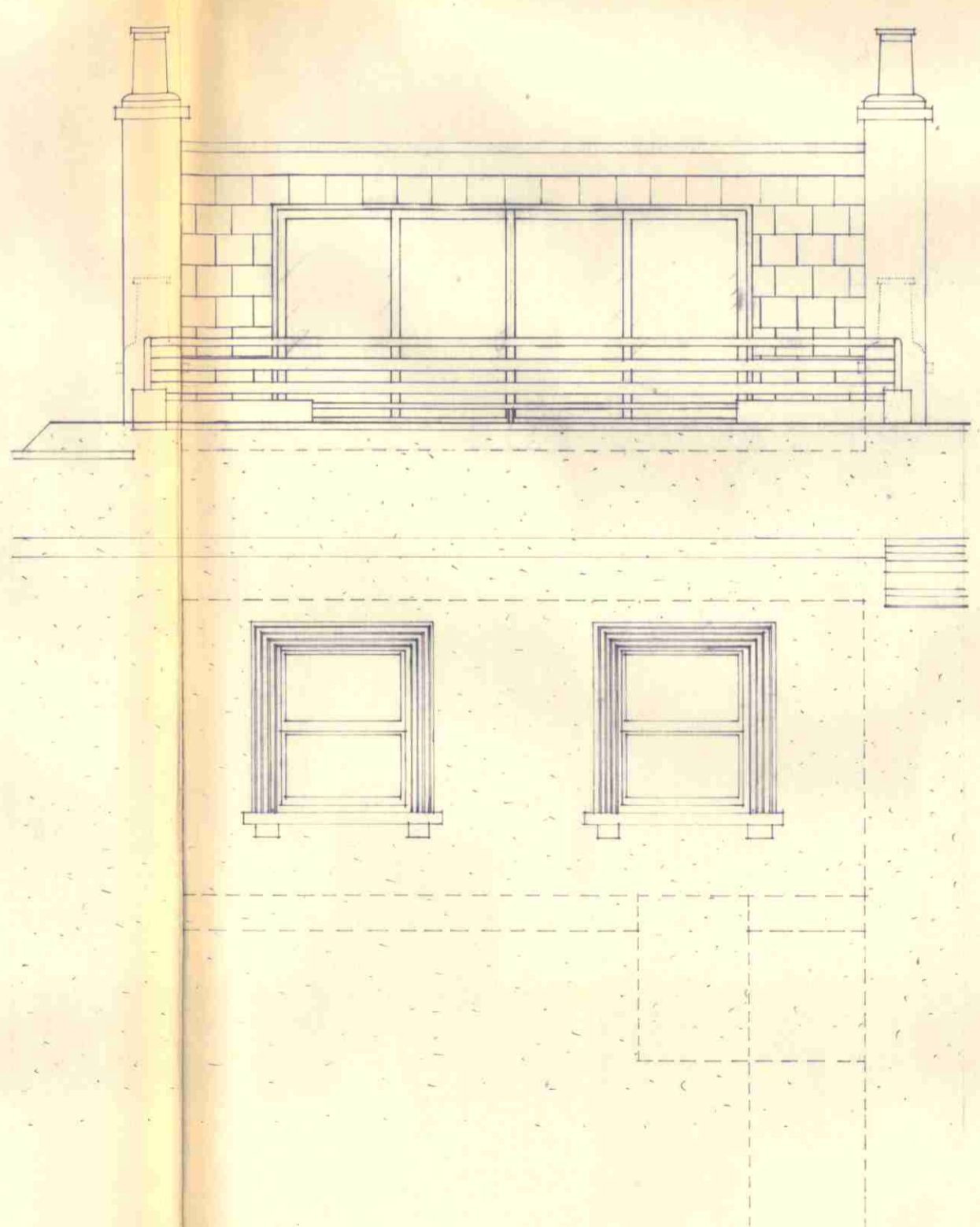
ROOF PLAN



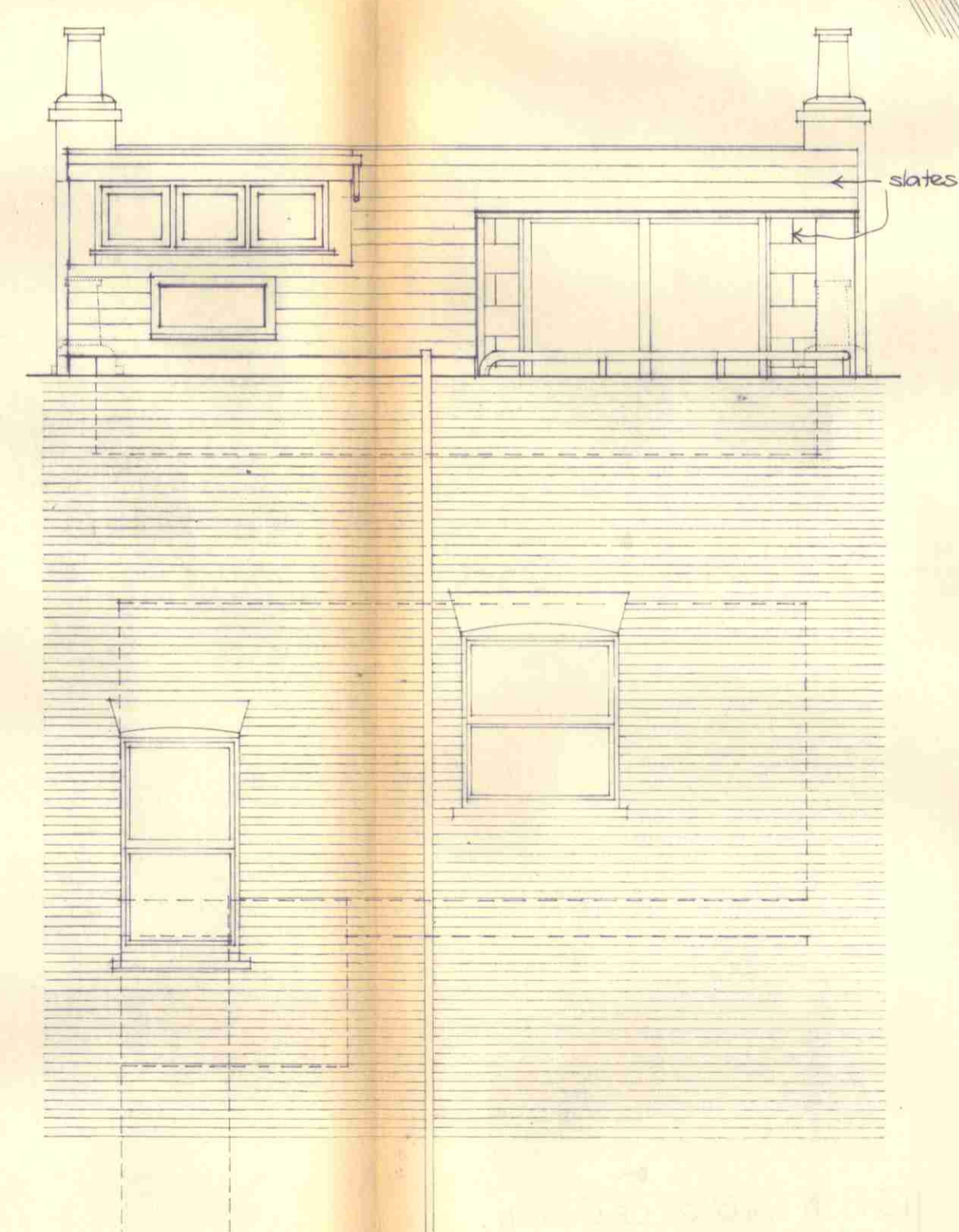
SECTION THROUGH BUILDINGS (dims. approx.)



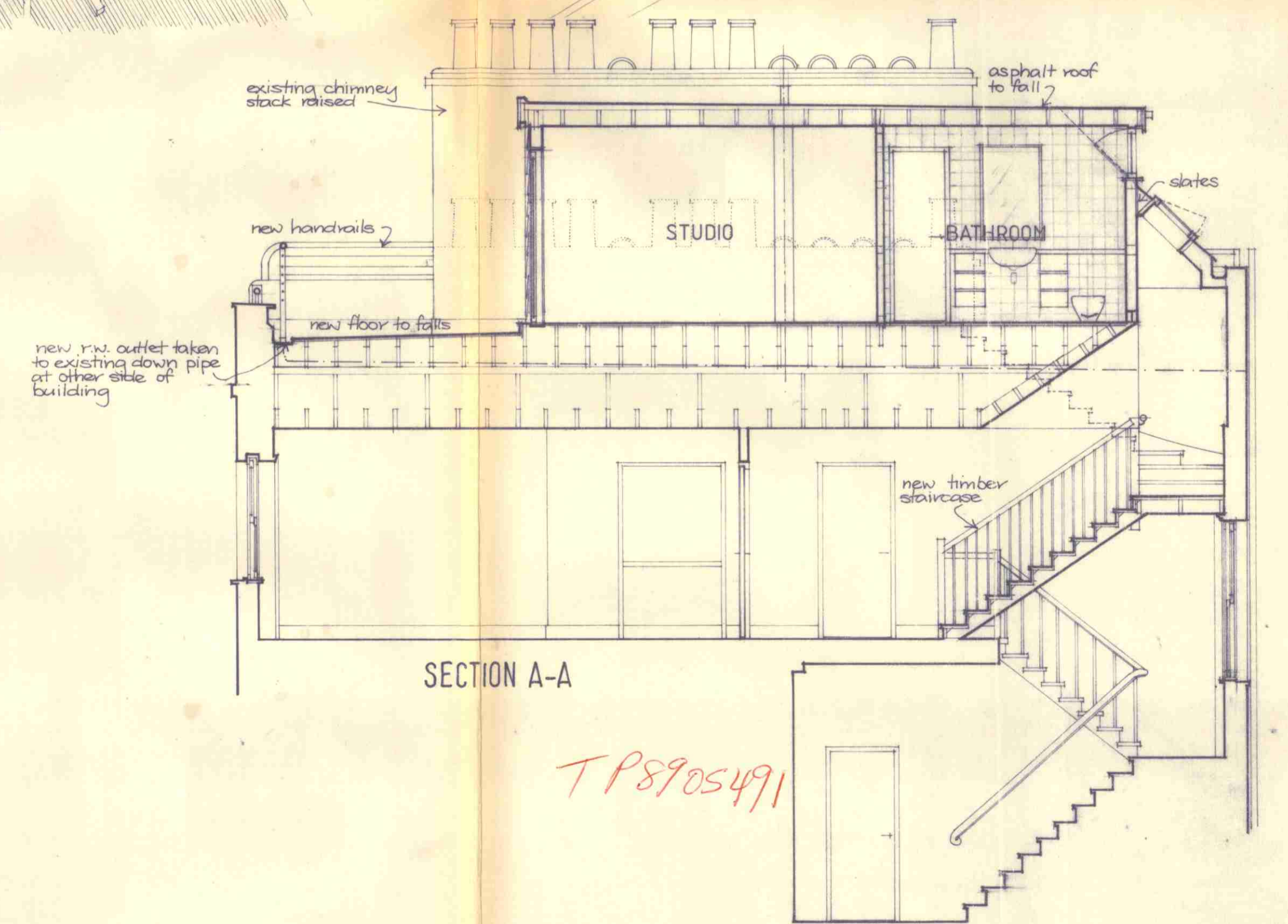
3RD FLOOR



ENGLAND'S LANE ELEVATION



ELIZABETH MEWS ELEVATION



SECTION A-A

TP8905491

DDA
 DINERMAN DAVISON ASSOCIATES
 Chartered Architects
 22 Perrins Walk Hampstead London NW3 6TJ 01-435 0038-9-0

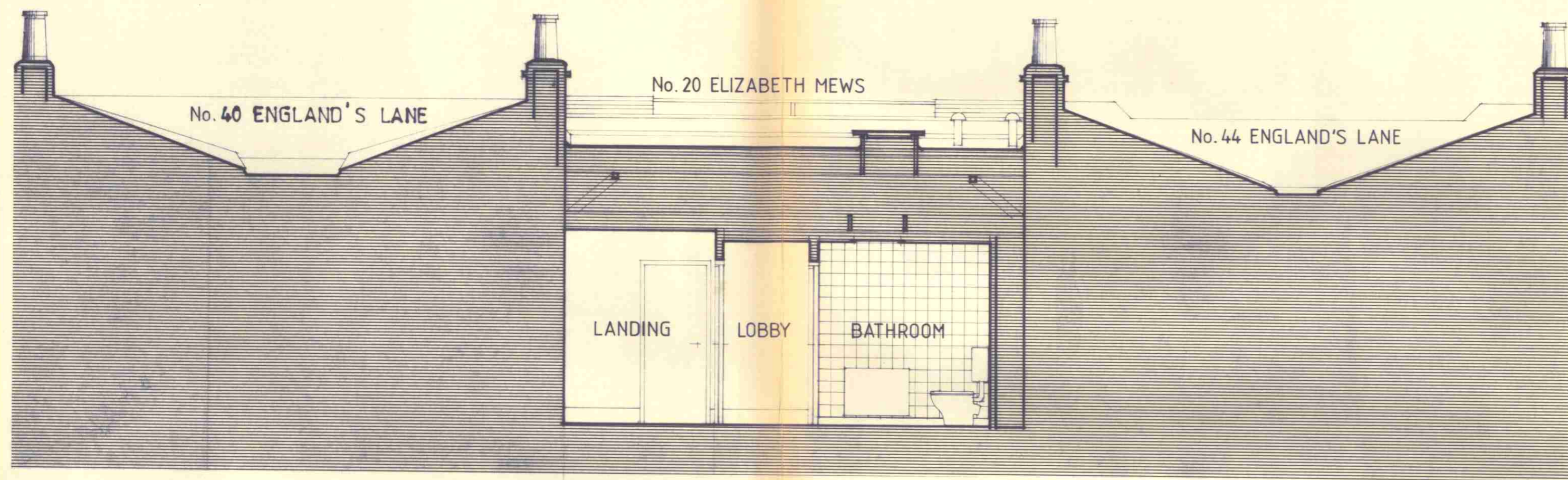
revisions	dates
A windows altered, doors added	18.6.89

revisions	dates

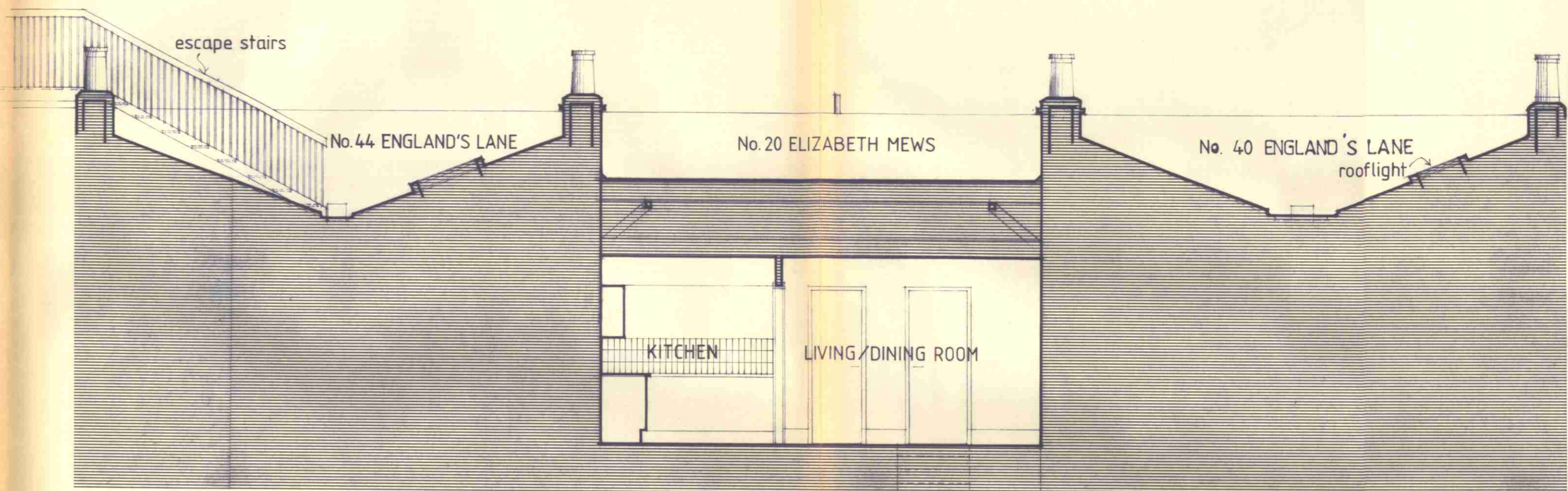
20 ELIZABETH MEWS, N.W.3
 Flat No. 3
 proposed roof extension

drawn by
 vs
 date
 13/6/89

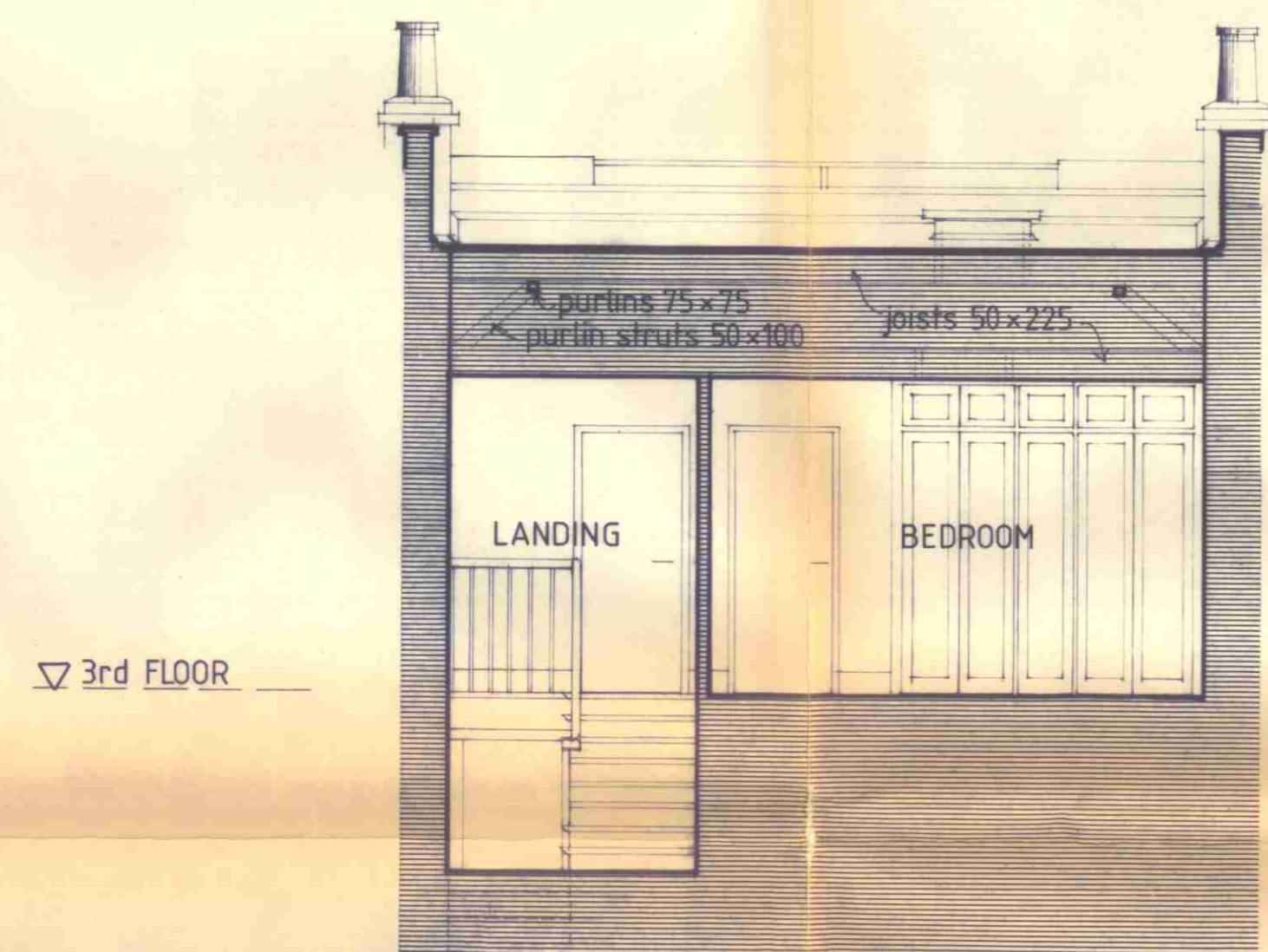
drawing no.
 1012/3 A
 scale
 1:50



SECTION C-C



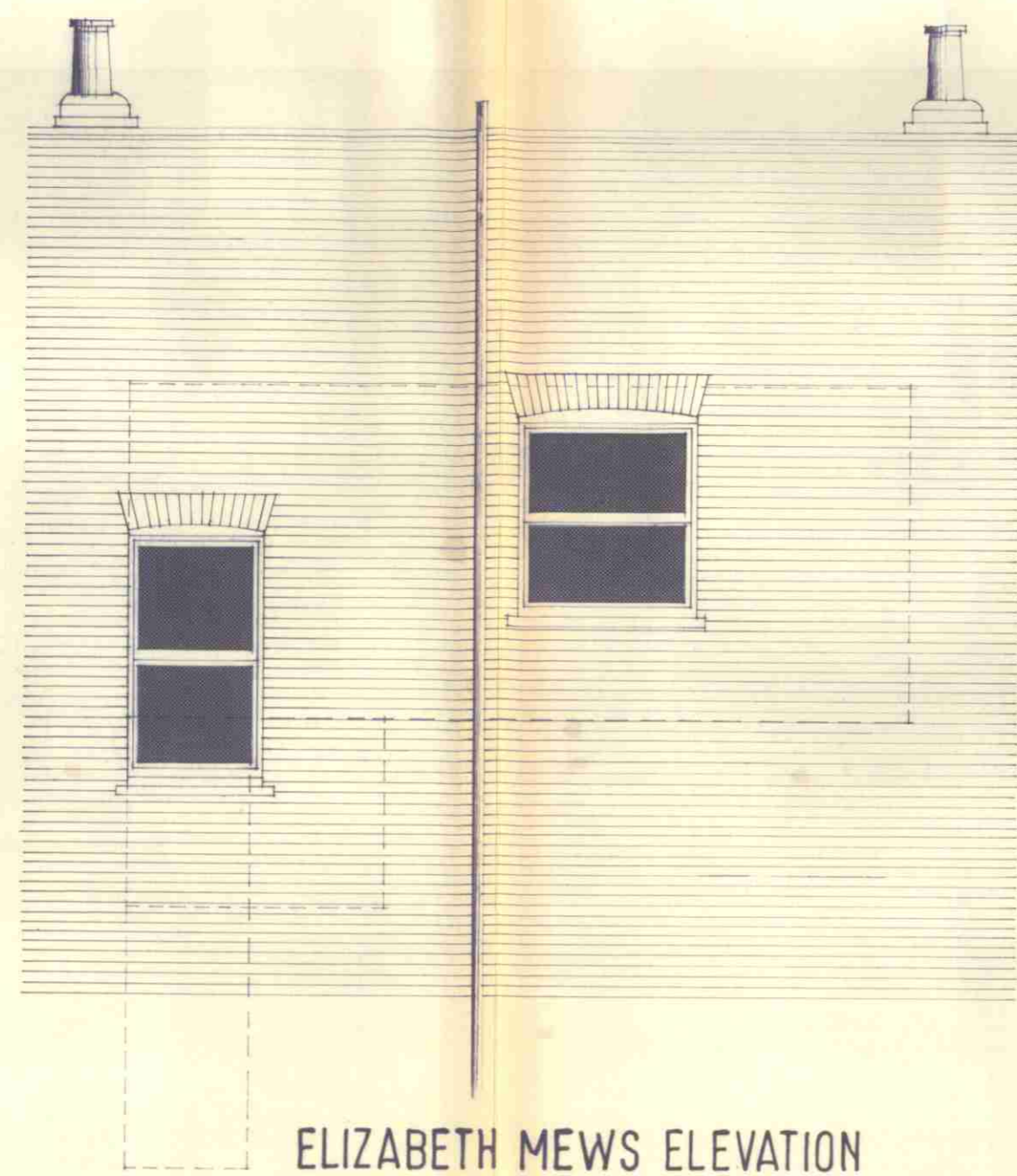
SECTION D-D



▽ 3rd FLOOR

SECTION E-E

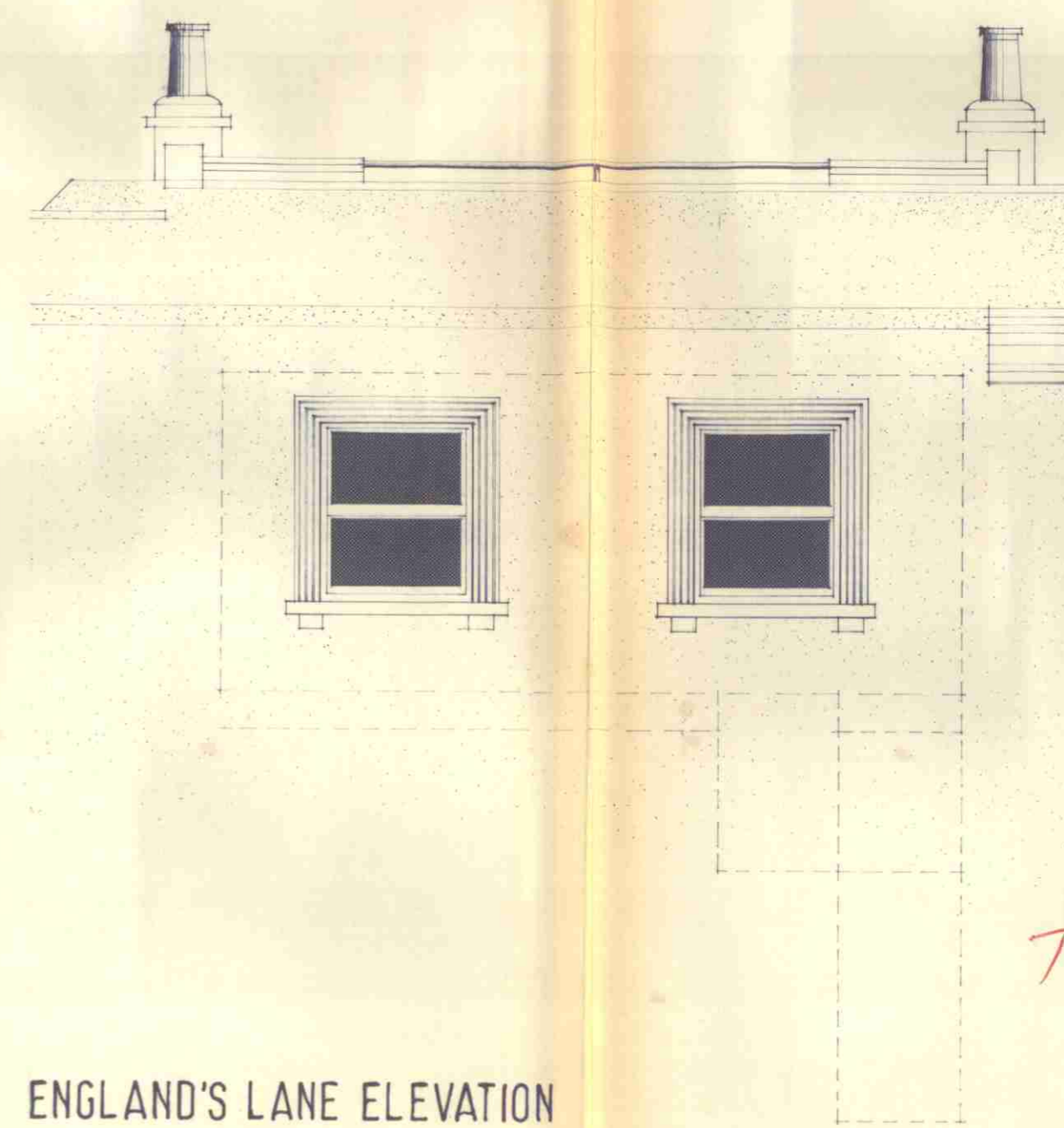
▽ 2nd FLOOR



ELIZABETH MEWS ELEVATION

▽ 3rd FLOOR

▽ 2nd FLOOR



ENGLAND'S LANE ELEVATION

TP8905491

LONDON BOROUGH OF CAMDEN
PLANNING AND TRANSPORT
DEPARTMENT
20 JUN 1989
RECEIVED

DDA

DINERMAN DAVISON ASSOCIATES
Chartered Architects
22 Perrins Walk Hampstead London NW3 6TJ 01-435 0038-9-0

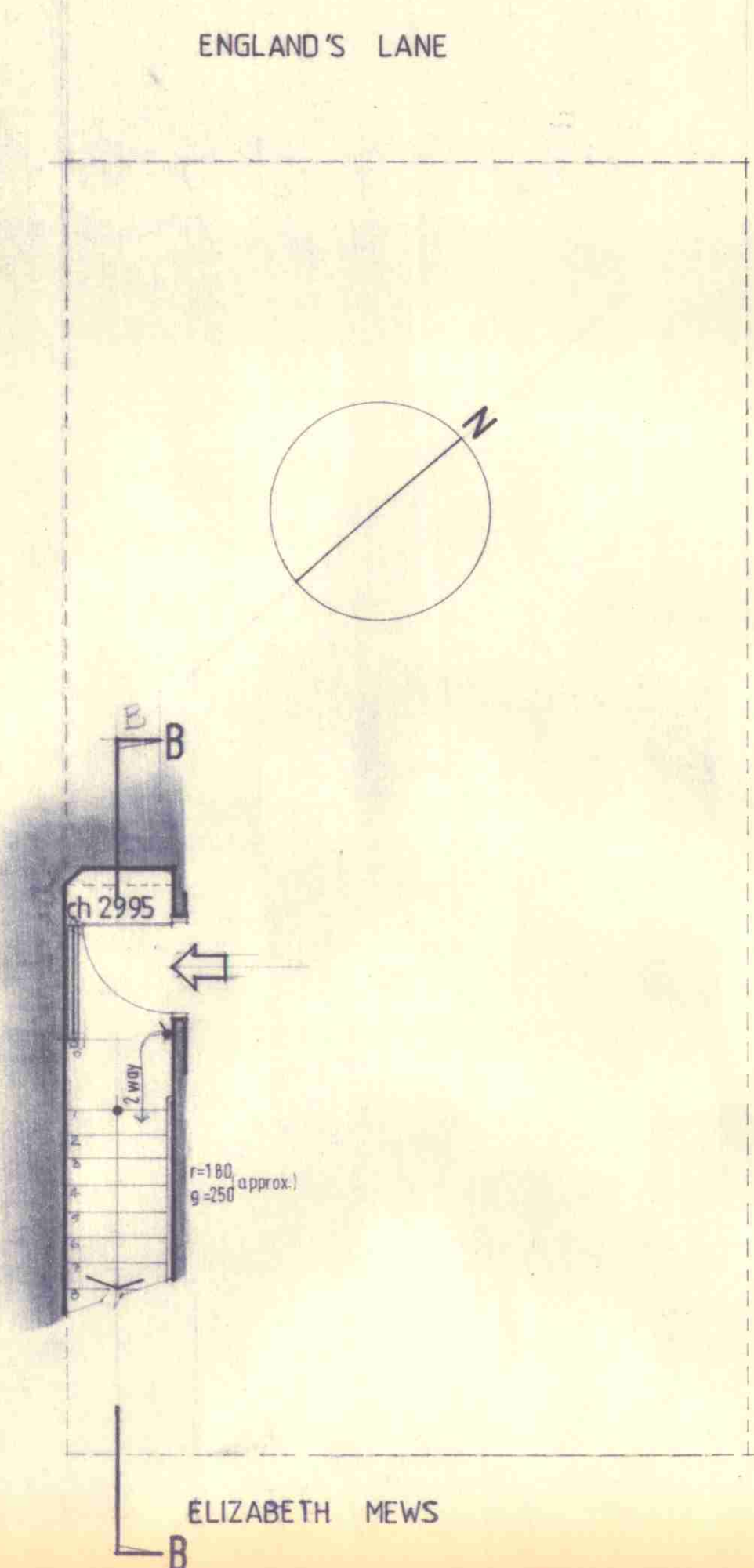
revisions	dates

revisions	dates

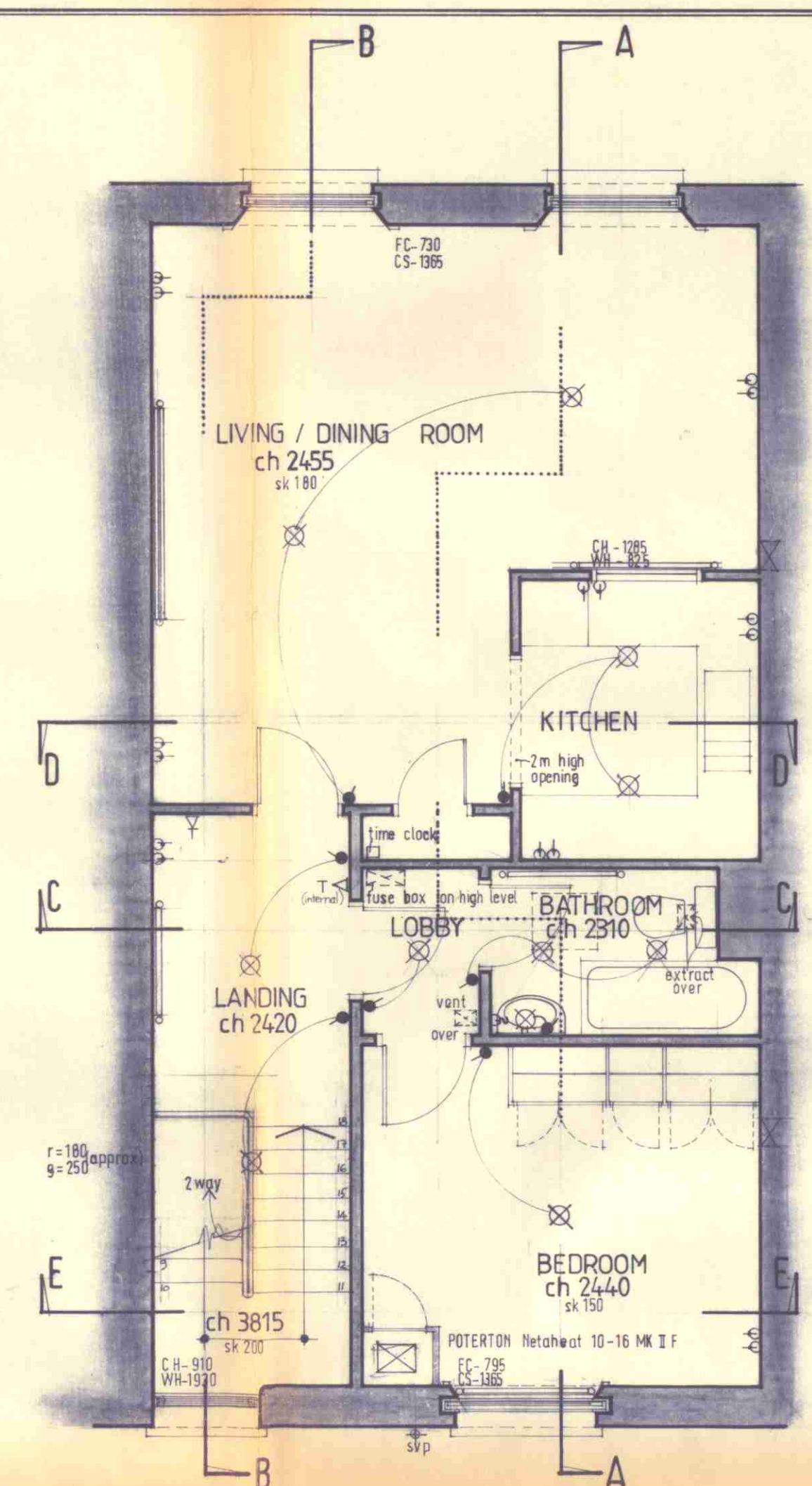
20 ELIZABETH MEWS, N.W.3
Flat No. 3
sections & elevations - survey

drawn by
vs
date
30/5/89

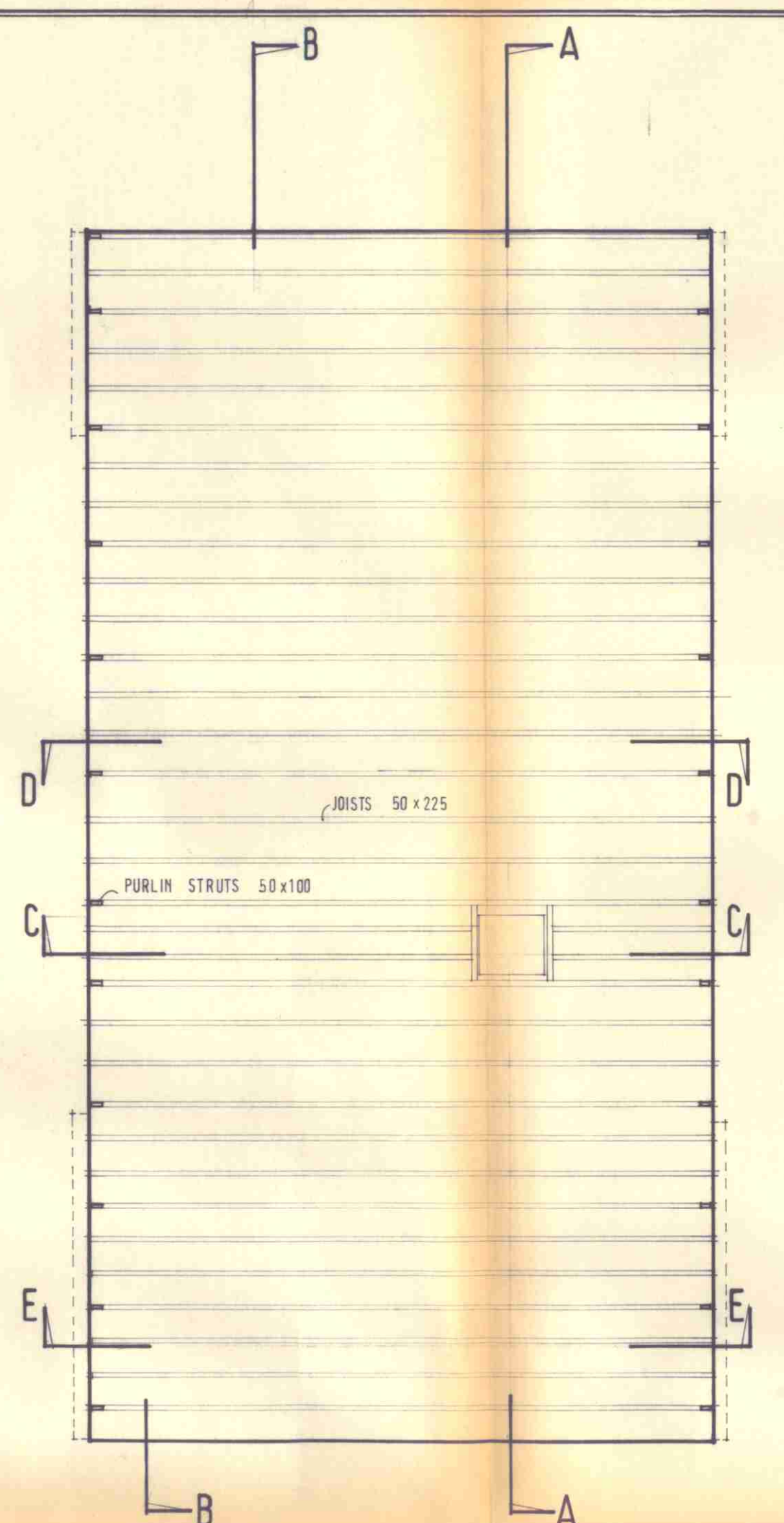
drawing no.
1012/2
scale
1:50



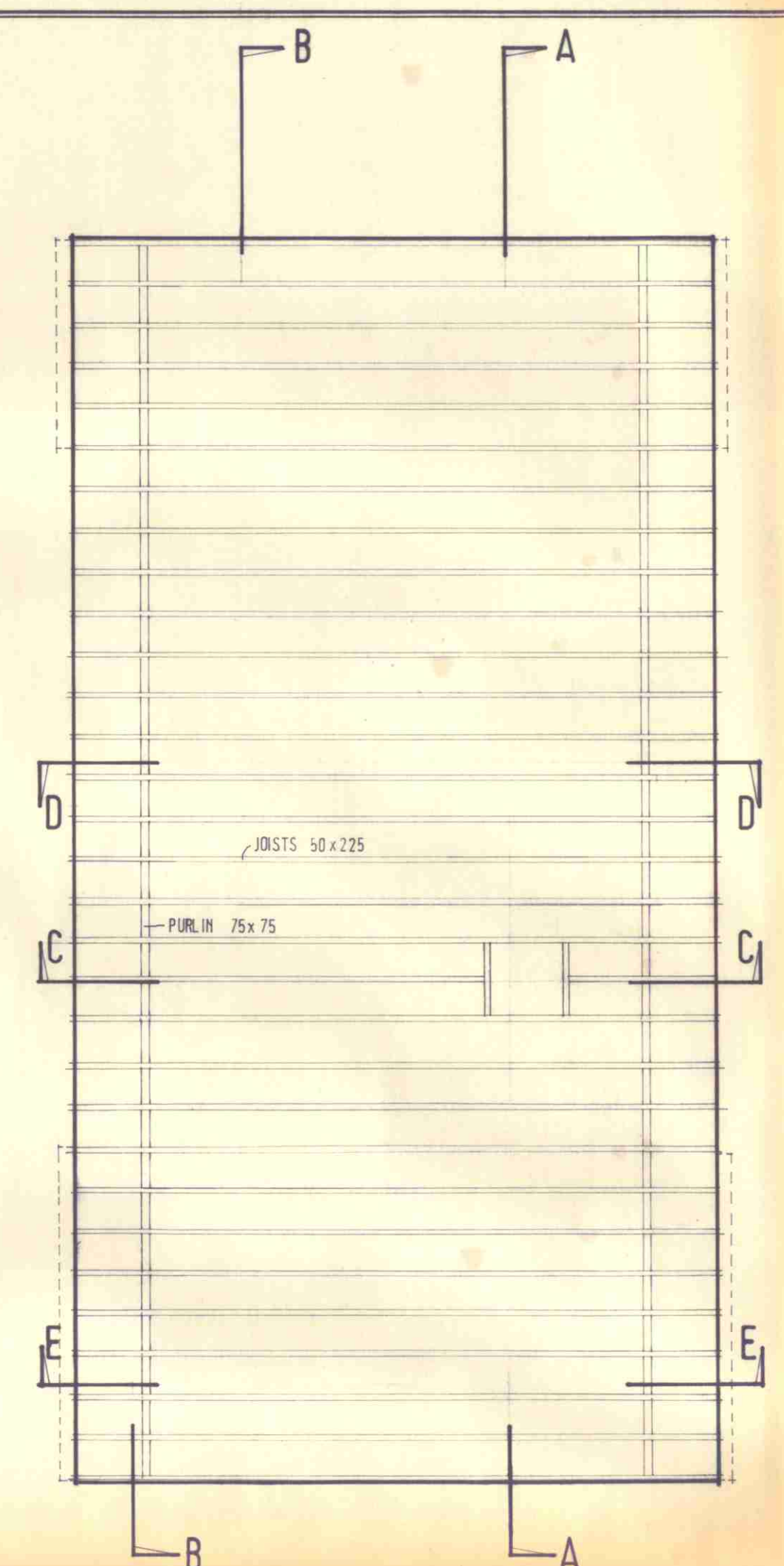
2nd FLOOR



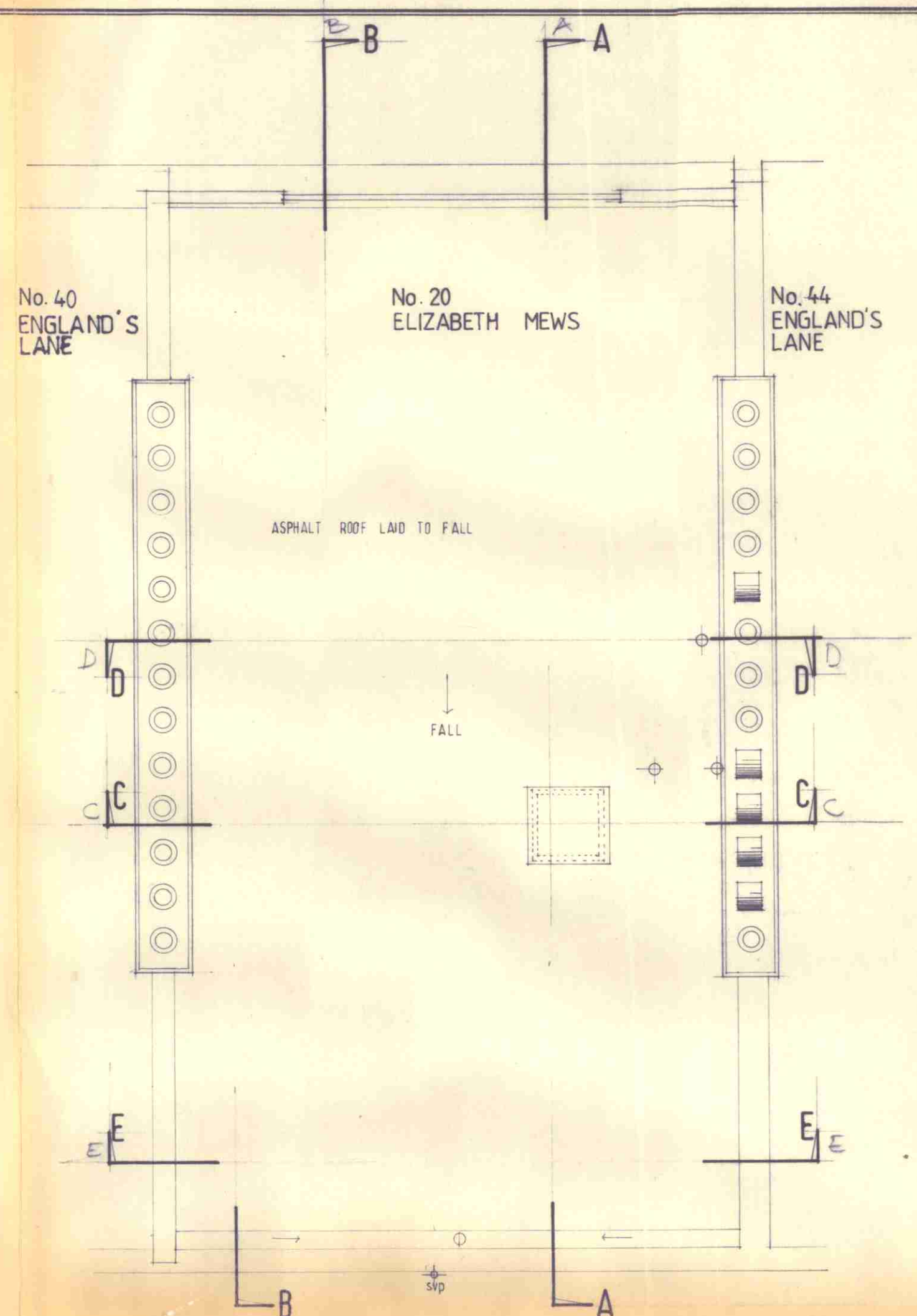
3rd FLOOR



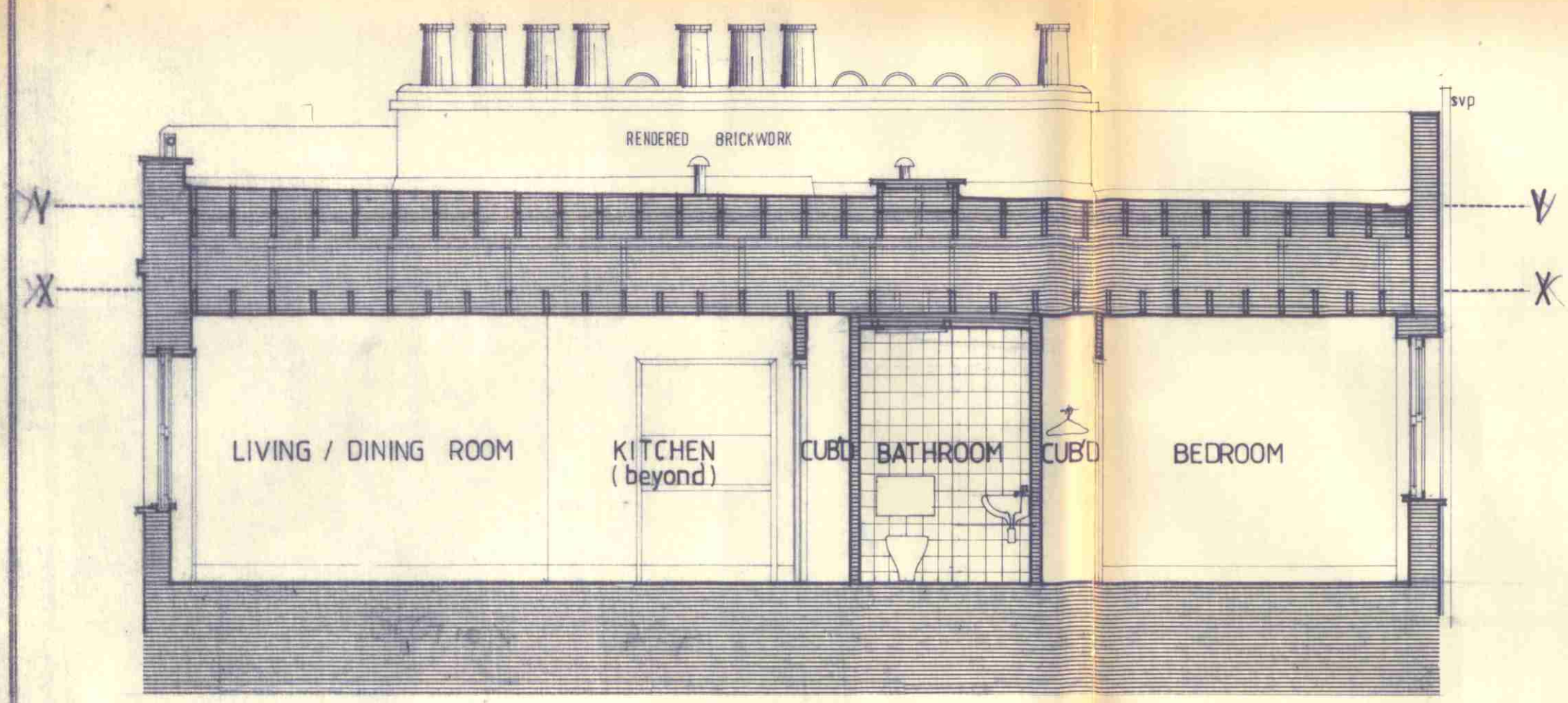
PLAN at X-X



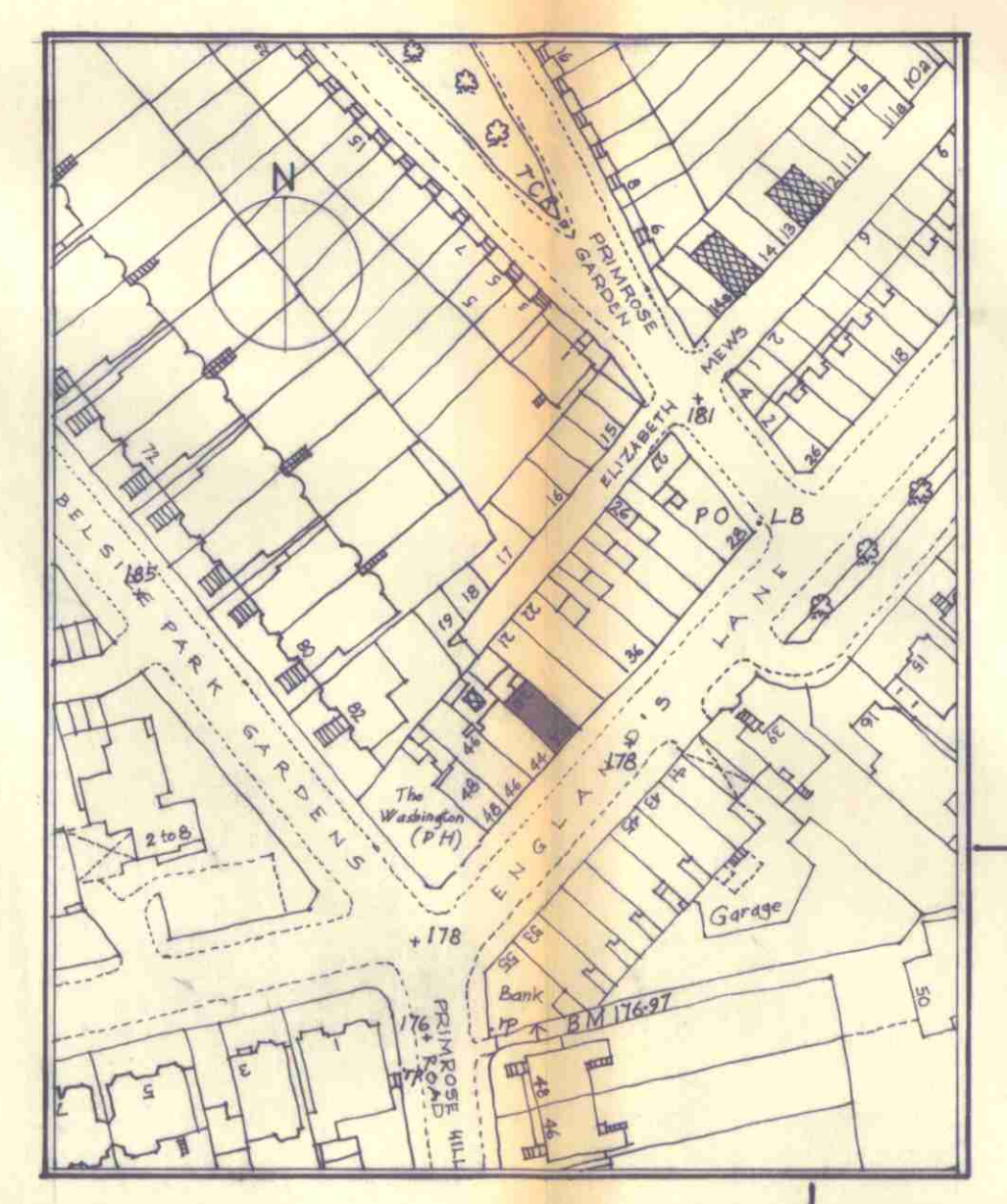
PLAN at Y-Y



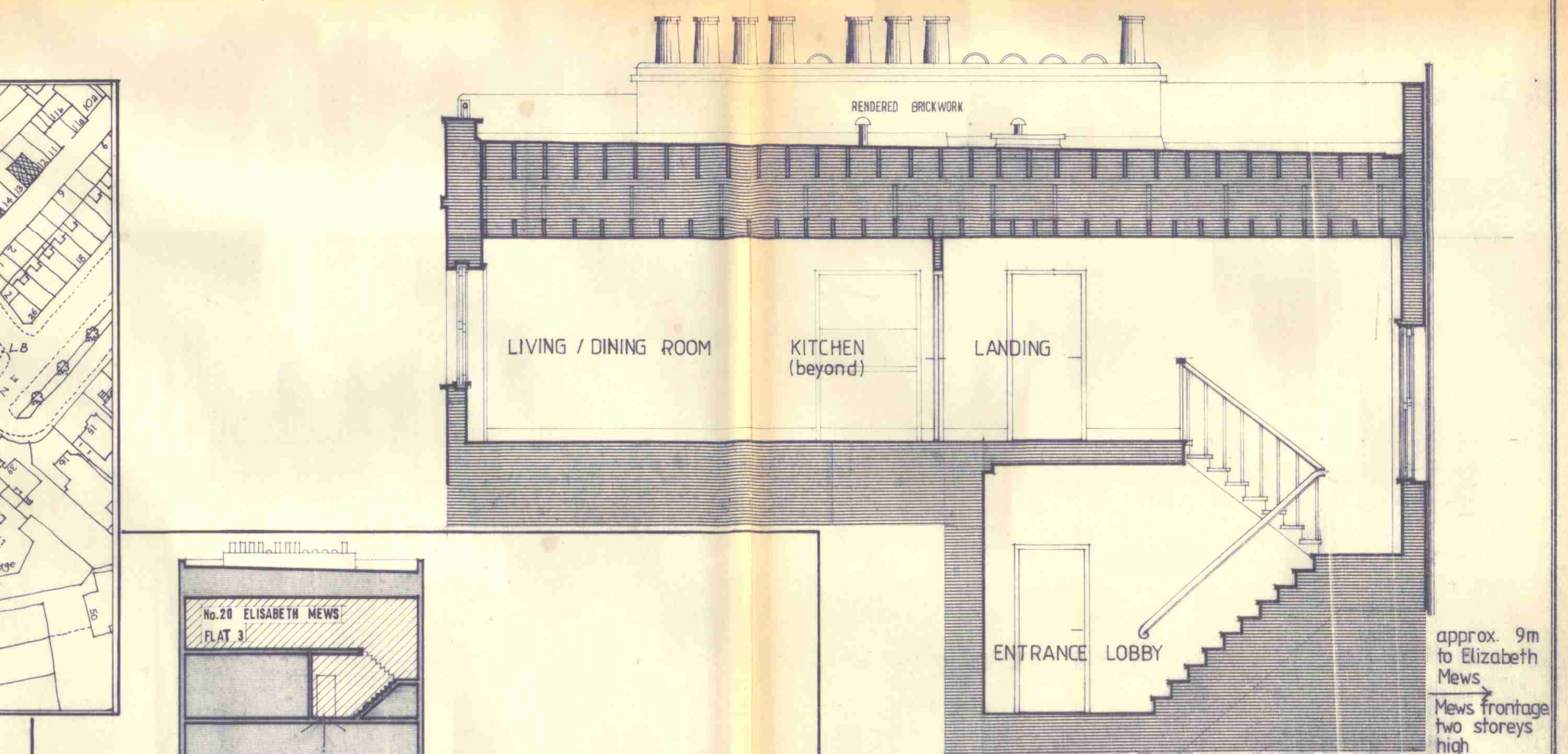
ROOF PLAN



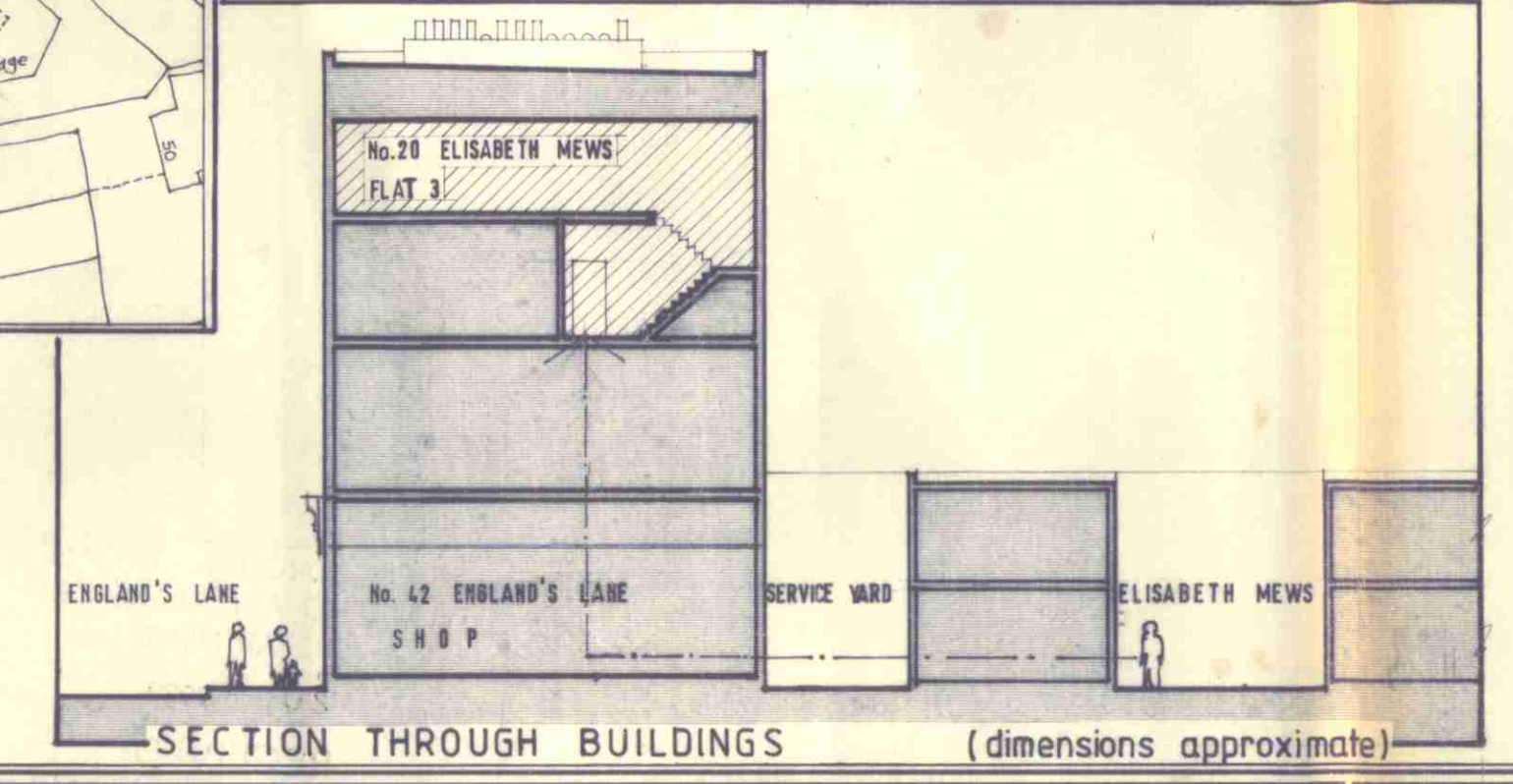
SECTION A-A



LOCATION PLAN 1:1250



SECTION B-B



SECTION THROUGH BUILDINGS (dimensions approximate)

TP890549J

DDA
 DINERMAN DAVISON ASSOCIATES
 Chartered Architects
 22 Perrins Walk Hampstead London NW3 6TJ 01-435 0038-9-0

revisions	dates

revisions	dates

20 ELIZABETH MEWS, N.W. 3.
 flat no. 3
 PLANS & SECTIONS - Survey

drawn by VS
 date 30/5/89

drawing no. 1012/1
 scale 1:50