

Notes:
DESIGN INTENT ONLY
NOT FOR CONSTRUCTION

1. Issued for design intent only. Items of external envelope are to be designed and constructed to specialist subcontractor design details. (windows & window interfaces, curtain walling, external doors, roofing, metsec SFS, vents, stairs, balustrades, damp proofing)

2. It is the responsibility of the Main Contractor to ensure final compliance with the employers requirements.

3. Any structure shown is subject to confirmation and coordination by the Structural Engineer. Do not construct structural items using this drawing.

4. Any mechanical & electrical information shown is subject to confirmation and coordination by the M+E Subcontractor. Do not construct M+E items using this drawing.

5. Any drainage pipe locations, sizes and numbers shown are subject to confirmation by the M+E Subcontractor.

6. Details are subject to Building Control Approval.

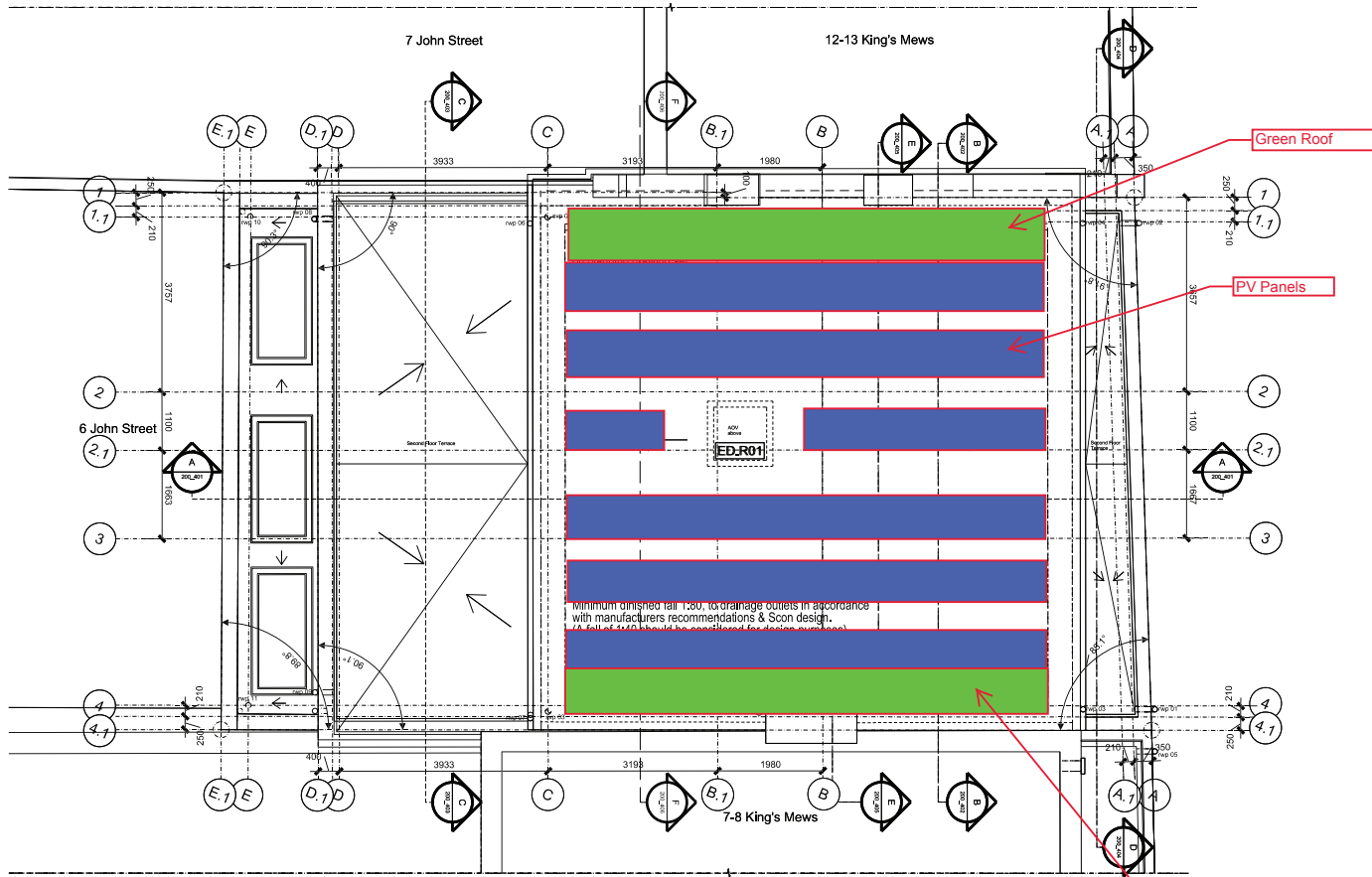
7. Below ground drainage in abeyance - awaiting Civil Engineer design input. Any below ground drainage shown is subject to coordination and confirmation by Civil Engineer.

8. To be in accordance with Secured By Design guidance for new homes.

9. MetSec/Metal structures to be confirmed by Scon & SE.

10. Design in subject to amendments pending awaited Planning Approval.

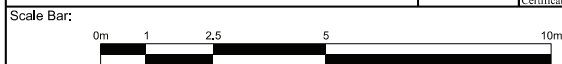
11. All measurements to be checked on site prior to construction.



Green Roof Layout Markup

General Notes:

Do not scale from this drawing. Use marked dimensions. Should any discrepancies be noted, please inform this office. This drawing is copyright of Matthew Allchurch Architects Limited



G	Construction Issue.	18.06.18	KD	JGW
F	Section F-F annotation added.	16.04.18	KD	JGW
E	Area & drainage positions added	07.02.18	KD	JGW
D	Note added for photovoltaics	22.01.18	JGW	VP
C	Section references updated	03.01.18	JGW	VP
B	Grid updated	15.12.17	JGW	VP
A	Issued for comment.	01.12.17	JGW	VP
Rev:	Description:	Date	Drn by:	Ckd by:

Client: Barhos Development Ltd				
Project Name: 10-11 King's Mews				
Drawing Title: General Arrangement: Proposed Roof Plan				
Project No:	Drawing No:	Revision:	Scale:	Date:
JHT02	P_200_205	G	A3@1:100	Dec 2017
Drawn By:	Checked By:	Status:		
KD	JGW	Construction		

the boathouse design studio
27 ferry road teddington tw11 9nn
t: 020 8973 0050
e: info@maa-architects.com
w: www.maa-architects.com