

1 Fourth Floor Plan as Proposed
Scale: 1:50

GENERAL NOTES.

All dimensions to be checked on site prior to commencement of any works, and/or preparation of any shop drawings.

Sizes of and dimensions to any structural elements are indicative only. See structural engineers drawings for actual sizes / dimensions.

Sizes of and dimensions to any service elements are indicative only. See service engineers drawings for actual sizes and dimensions.

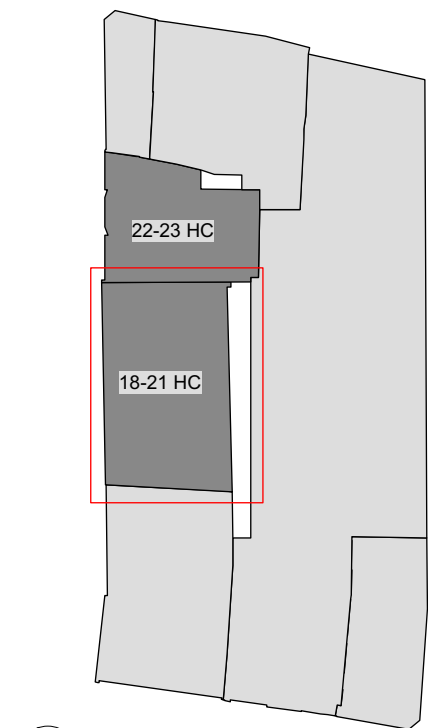
This drawing to be read in conjunction with all other Architect's drawings, specifications and other Consultants' information.

All proprietary systems shown on this drawing are to be installed strictly in accordance with the Manufacturers/Suppliers recommended details.

Any discrepancies between information shown on this drawing and any other contract information or manufacturers/suppliers recommendations is to be brought to the attention of the Architect

DO NOT SCALE FROM THIS DRAWING.

NOTES.



Key Plan

AREA USE KEY:

- Retail
- Office
- Residential
- Ancillary
- Outside of scope

- Planning Submission 21/09/2018

REVISION DATE

Buckley Gray Yeoman
Studio 4.04 The Tea Building 56 Shoreditch High Street
London E1 6JJ T: 020 7033 9913 F: 020 7033 9914

CLIENT
SRG Holborn Limited

PROJECT
18-21 Hand Court

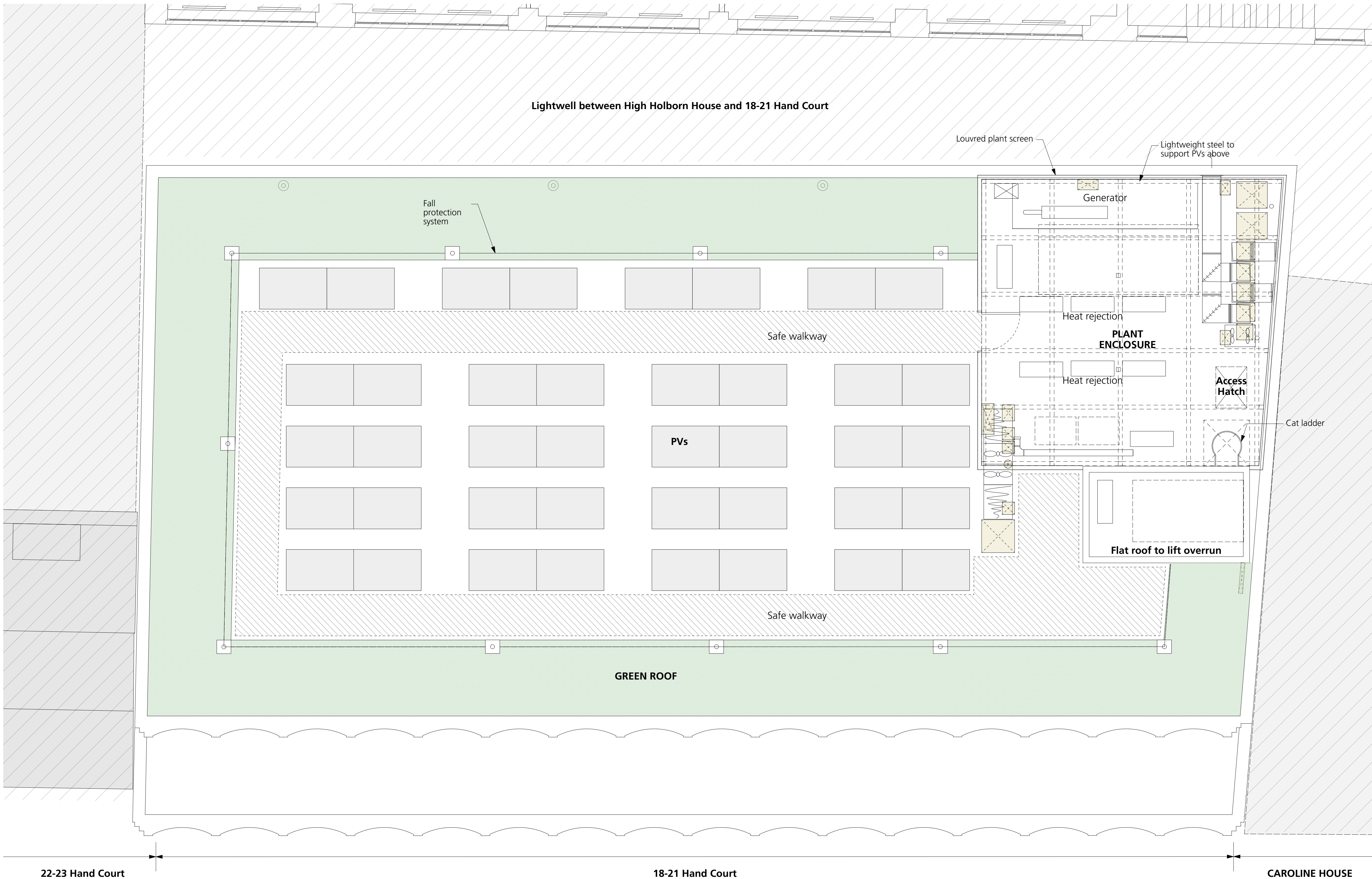
DRAWING
General Arrangements -
Proposed Fourth Floor Plan

SCALE
1:50 @ A1 (1:100 @ A3)

DATE Aug. 2018	DRAWN BY JR
DWG No. 975_1821HC-GA-04	REVISION -

DRAWING STATUS
PLANNING

Information contained on this drawing is the sole copyright of Buckley Gray Yeoman and is not to be reproduced without their permission.



1 Roof Plan as Proposed
Scale: 1:50

GENERAL NOTES.

All dimensions to be checked on site prior to commencement of any works, and/or preparation of any shop drawings.

Sizes of and dimensions to any structural elements are indicative only. See structural engineers drawings for actual sizes / dimensions.

Sizes of and dimensions to any service elements are indicative only. See service engineers drawings for actual sizes and dimensions.

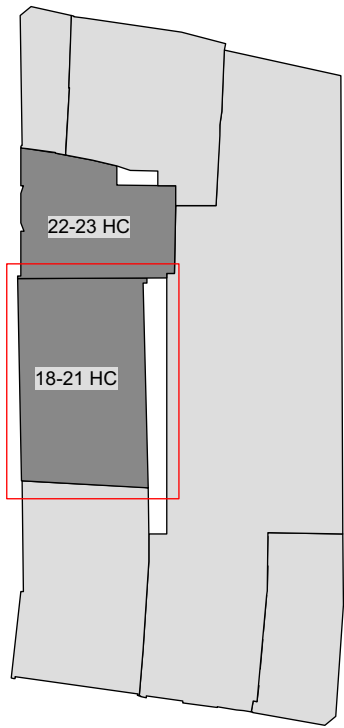
This drawing to be read in conjunction with all other Architect's drawings, specifications and other Consultants' information.

All proprietary systems shown on this drawing are to be installed strictly in accordance with the Manufacturers/Suppliers recommended details.

Any discrepancies between information shown on this drawing and any other contract information or manufacturers/suppliers recommendations is to be brought to the attention of the Architect

DO NOT SCALE FROM THIS DRAWING.

NOTES.



Key Plan

AREA USE KEY:

- Retail
- Office
- Residential
- Ancillary
- Outside of scope

- Planning Submission 21/09/2018

REVISION DATE

Buckley Gray Yeoman

Studio 4.04 The Tea Building 56 Shoreditch High Street
London E1 6JJ T: 020 7033 9913 F: 020 7033 9914

CLIENT

SRG Holborn Limited

PROJECT

18-21 Hand Court

DRAWING

General Arrangements -
Proposed Roof Plan

SCALE

1:50 @ A1 (1:100 @ A3)

DATE

Aug. 2018

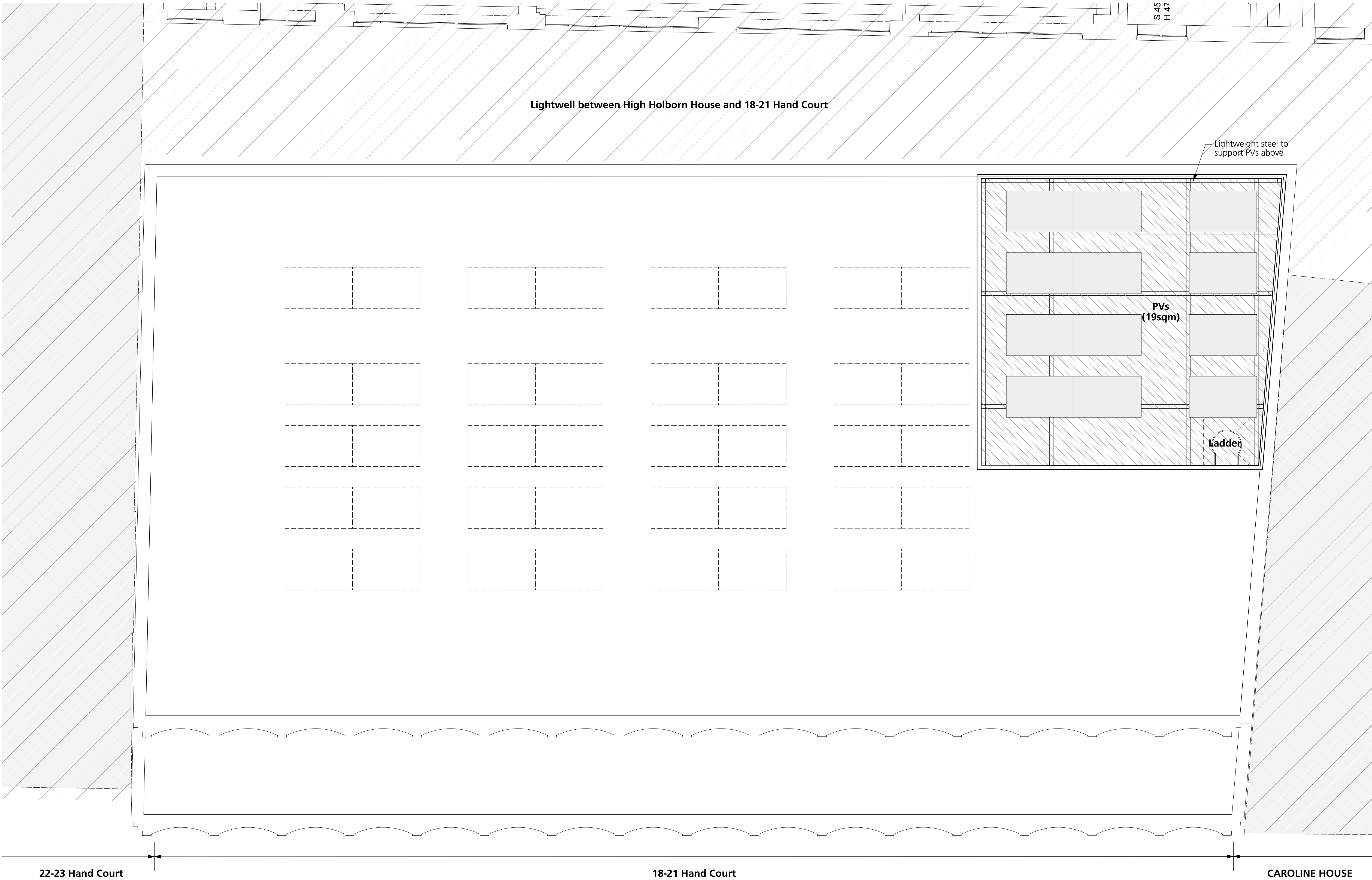
DWG No.

975_1821HC-GA-RF

DRAWING STATUS

PLANNING

Information contained on this drawing is the sole copyright of
Buckley Gray Yeoman and is not to be reproduced without their permission.



1 Roof PV Plan as Proposed
Scale: 1:50

GENERAL NOTES.

All dimensions to be checked on site prior to commencement of any works, and/or preparation of any shop drawings.

Sizes of and dimensions to any structural elements are indicative only. See structural engineers drawings for actual sizes / dimensions.

Sizes of and dimensions to any service elements are indicative only. See service engineers drawings for actual sizes and dimensions.

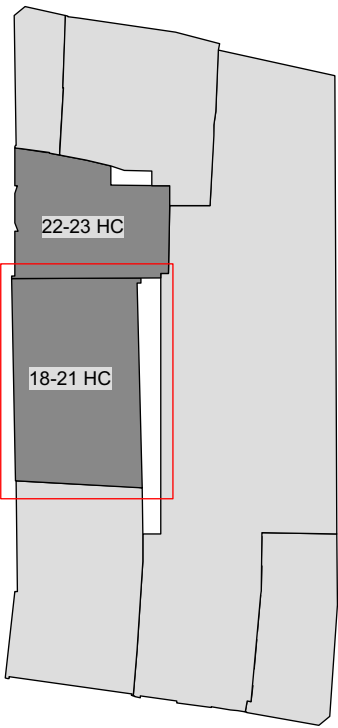
This drawing to be read in conjunction with all other Architect's drawings, specifications and other Consultants' information.

All proprietary systems shown on this drawing are to be installed strictly in accordance with the Manufacturers/Suppliers recommended details.

Any discrepancies between information shown on this drawing and any other contract information or manufacturers/suppliers recommendations is to be brought to the attention of the Architect

DO NOT SCALE FROM THIS DRAWING.

NOTES.



Key Plan

AREA USE KEY:

- Retail
- Office
- Residential
- Ancillary
- Outside of scope

- Planning Submission 21/09/2018

REVISION DATE

Buckley Gray Yeoman
Studio 4.04 The Tea Building 56 Shoreditch High Street
London E1 6JJ T: 020 7033 9913 F: 020 7033 9914

CLIENT
SRG Holborn Limited

PROJECT
18-21 Hand Court

DRAWING
General Arrangements -
Proposed Roof PV Plan

SCALE
1:50 @ A1 (1:100 @ A3)

DATE Aug. 2018	DRAWN BY JR
DWG No. 975_1821HC-GA-RFPV	REVISION -

DRAWING STATUS
PLANNING

Information contained on this drawing is the sole copyright of
Buckley Gray Yeoman and is not to be reproduced without their permission.



1 Proposed Front Elevation at 18-21 Hand Court
Scale: 1:100

GENERAL NOTES.

All dimensions to be checked on site prior to commencement of any works, and/or preparation of any shop drawings.

Sizes of and dimensions to any structural elements are indicative only. See structural engineers drawings for actual sizes / dimensions.

Sizes of and dimensions to any service elements are indicative only. See service engineers drawings for actual sizes and dimensions.

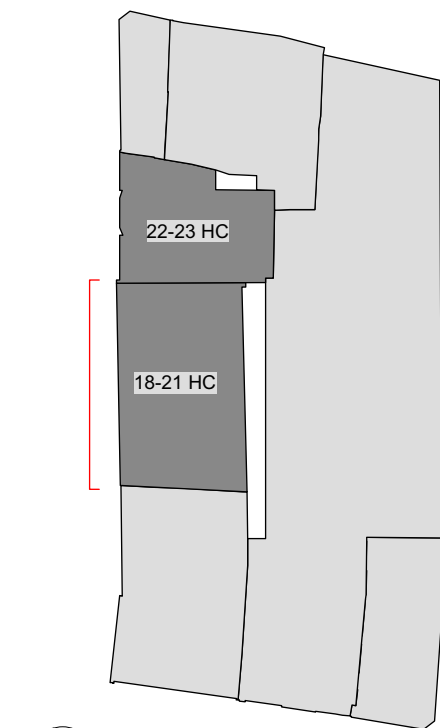
This drawing to be read in conjunction with all other Architect's drawings, specifications and other Consultants' information.

All proprietary systems shown on this drawing are to be installed strictly in accordance with the Manufacturers/Suppliers recommended details.

Any discrepancies between information shown on this drawing and any other contract information or manufacturers/suppliers recommendations is to be brought to the attention of the Architect

DO NOT SCALE FROM THIS DRAWING.

NOTES.



Key Plan

ELEVATION KEY:

1. Red/brown brickwork piers.
2. Curved red/brown brick spandrel panel.
3. Stepped brick reveal.
4. Dark stone plinth/base.
5. Bronze coloured shopfronts & office entrance.
6. Bronze coloured metal screen to substation doors.
7. Bronze coloured balustrade.
8. Glazing.
9. Grey coloured PPC metal acoustic plant screen.
10. Grey coloured metal lift overrun.
11. PVs.
12. Red/brown brickwork.
13. Grey brickwork.
14. Grey coloured mechanical louvers.

- Planning Submission 21/09/2018

REVISION DATE

Buckley Gray Yeoman

Studio 4.04 The Tea Building 56 Shoreditch High Street
London E1 6JJ T: 020 7033 9913 F: 020 7033 9914

CLIENT

SRG Holborn Limited

PROJECT

18-21 Hand Court

DRAWING

Proposed Front Elevation

SCALE

1:100 @ A1

DATE

Aug 2018

DRAWN BY

JR

DWG No.

975_1821HC-GE-01

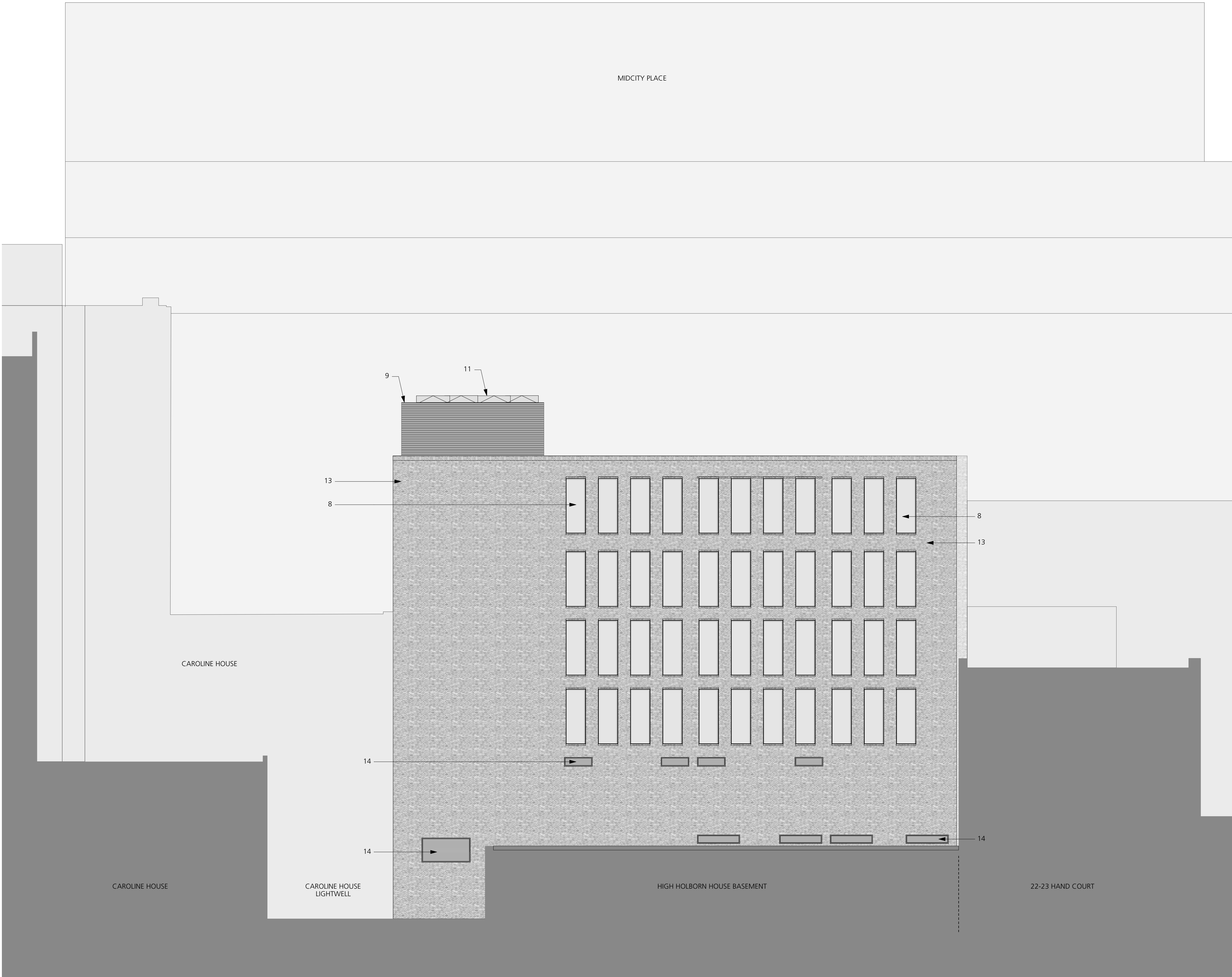
REVISION

-

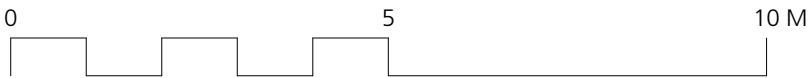
DRAWING STATUS

PLANNING

Information contained on this drawing is the sole copyright of Buckley Gray Yeoman and is not to be reproduced without their permission.



1 Proposed Rear Elevation at 18-21 Hand Court
Scale: 1:100



GENERAL NOTES.

All dimensions to be checked on site prior to commencement of any works, and/or preparation of any shop drawings.

Sizes of and dimensions to any structural elements are indicative only. See structural engineers drawings for actual sizes / dimensions.

Sizes of and dimensions to any service elements are indicative only. See service engineers drawings for actual sizes and dimensions.

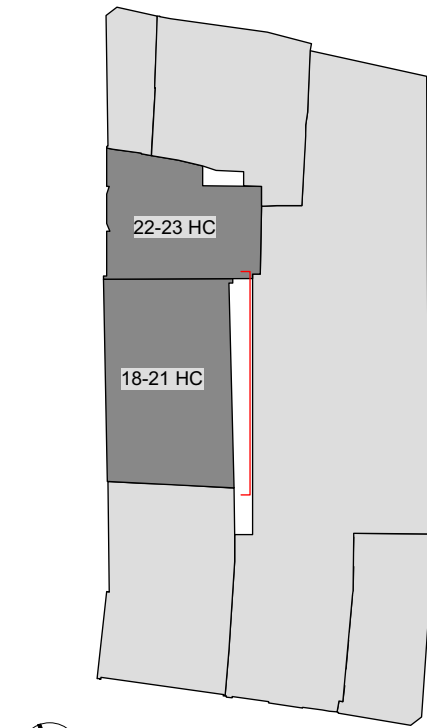
This drawing to be read in conjunction with all other Architect's drawings, specifications and other Consultants' information.

All proprietary systems shown on this drawing are to be installed strictly in accordance with the Manufacturers/Suppliers recommended details.

Any discrepancies between information shown on this drawing and any other contract information or manufacturers/suppliers recommendations is to be brought to the attention of the Architect

DO NOT SCALE FROM THIS DRAWING.

NOTES.



Key Plan

ELEVATION KEY:

1. Red/brown brickwork piers.
2. Curved red/brown brick spandrel panel.
3. Stepped brick reveal.
4. Dark stone plinth/base.
5. Bronze coloured shopfronts & office entrance.
6. Bronze coloured metal screen to substation doors.
7. Bronze coloured balustrade.
8. Glazing.
9. Grey coloured PPC metal acoustic plant screen.
10. Grey coloured metal lift overrun.
11. PVs.
12. Red/brown brickwork.
13. Grey brickwork.
14. Grey coloured mechanical louvers.

- Planning Submission 21/09/2018

REVISION DATE

Buckley Gray Yeoman
Studio 4.04 The Tea Building 56 Shoreditch High Street
London E1 6JJ T: 020 7033 9913 F: 020 7033 9914

CLIENT
SRG Holborn Limited

PROJECT
18-21 Hand Court

DRAWING
Proposed Rear Elevation

SCALE
1:100 @ A1

DATE
Aug 2018

DWG No.
975_1821HC-GE-02

DRAWING STATUS
PLANNING

Information contained on this drawing is the sole copyright of Buckley Gray Yeoman and is not to be reproduced without their permission.



1 Proposed North Elevation at 18-21 Hand Court
Scale: 1:100



GENERAL NOTES.

All dimensions to be checked on site prior to commencement of any works, and/or preparation of any shop drawings.

Sizes of and dimensions to any structural elements are indicative only. See structural engineers drawings for actual sizes / dimensions.

Sizes of and dimensions to any service elements are indicative only. See service engineers drawings for actual sizes and dimensions.

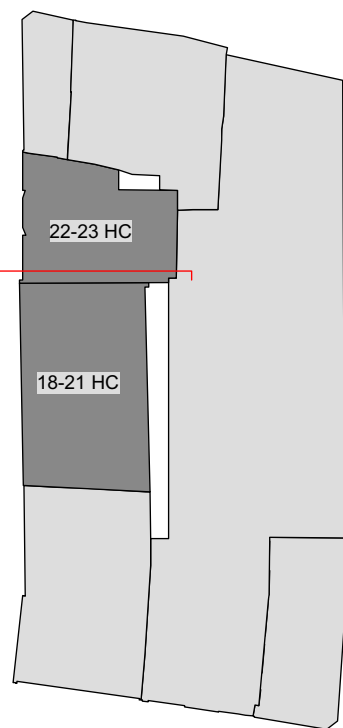
This drawing to be read in conjunction with all other Architect's drawings, specifications and other Consultants' information.

All proprietary systems shown on this drawing are to be installed strictly in accordance with the Manufacturers/Suppliers recommended details.

Any discrepancies between information shown on this drawing and any other contract information or manufacturers/suppliers recommendations is to be brought to the attention of the Architect

DO NOT SCALE FROM THIS DRAWING.

NOTES.



Key Plan

ELEVATION KEY:

1. Red/brown brickwork piers.
2. Curved red/brown brick spandrel panel.
3. Stepped brick reveal.
4. Dark stone plinth/base.
5. Bronze coloured shopfronts & office entrance.
6. Bronze coloured metal screen to substation doors.
7. Bronze coloured balustrade.
8. Glazing.
9. Grey coloured PPC metal acoustic plant screen.
10. Grey coloured metal lift overrun.
11. PVs.
12. Red/brown brickwork.
13. Grey brickwork.
14. Grey coloured mechanical louvres.

- Planning Submission 21/09/2018

REVISION DATE

Buckley Gray Yeoman

Studio 4.04 The Tea Building 56 Shoreditch High Street
London E1 6JJ T: 020 7033 9913 F: 020 7033 9914

CLIENT

SRG Holborn Limited

PROJECT

18-21 Hand Court

DRAWING

Proposed North Elevation

SCALE

1:100 @ A1

DATE

Aug 2018

DWG No.

975_1821HC-GE-03

DRAWING STATUS
PLANNING

DRAWN BY

JR

REVISION

-