

1 Second Floor Plan as Proposed
Scale: 1:50

GENERAL NOTES.

All dimensions to be checked on site prior to commencement of any works, and/or preparation of any shop drawings.

Sizes of and dimensions to any structural elements are indicative only. See structural engineers drawings for actual sizes / dimensions.

Sizes of and dimensions to any service elements are indicative only. See service engineers drawings for actual sizes and dimensions.

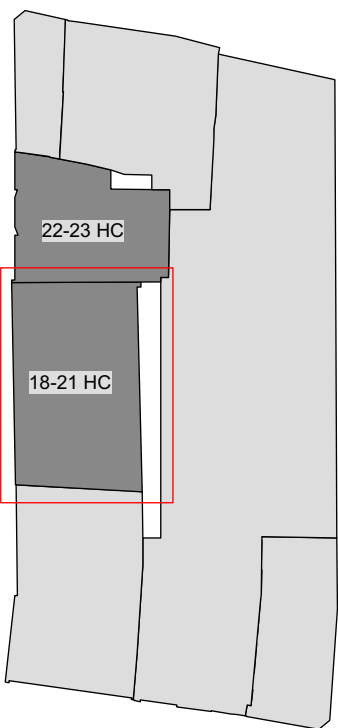
This drawing to be read in conjunction with all other Architect's drawings, specifications and other Consultants' information.

All proprietary systems shown on this drawing are to be installed strictly in accordance with the Manufacturers/Suppliers recommended details.

Any discrepancies between information shown on this drawing and any other contract information or manufacturers/suppliers recommendations is to be brought to the attention of the Architect

DO NOT SCALE FROM THIS DRAWING.

NOTES.



Key Plan

AREA USE KEY:

- Retail
- Office
- Residential
- Ancillary
- Outside of scope

- Planning Submission 21/09/2018

REVISION DATE

Buckley Gray Yeoman

Studio 4.04 The Tea Building 56 Shoreditch High Street
London E1 6JJ T: 020 7033 9913 F: 020 7033 9914

CLIENT

SRG Holborn Limited

PROJECT

18-21 Hand Court

DRAWING

General Arrangements -
Proposed Second Floor Plan

SCALE

1:50 @ A1 (1:100 @ A3)

DATE

Aug. 2018

DWG No.

975_1821HC-GA-02

DRAWING STATUS
PLANNING

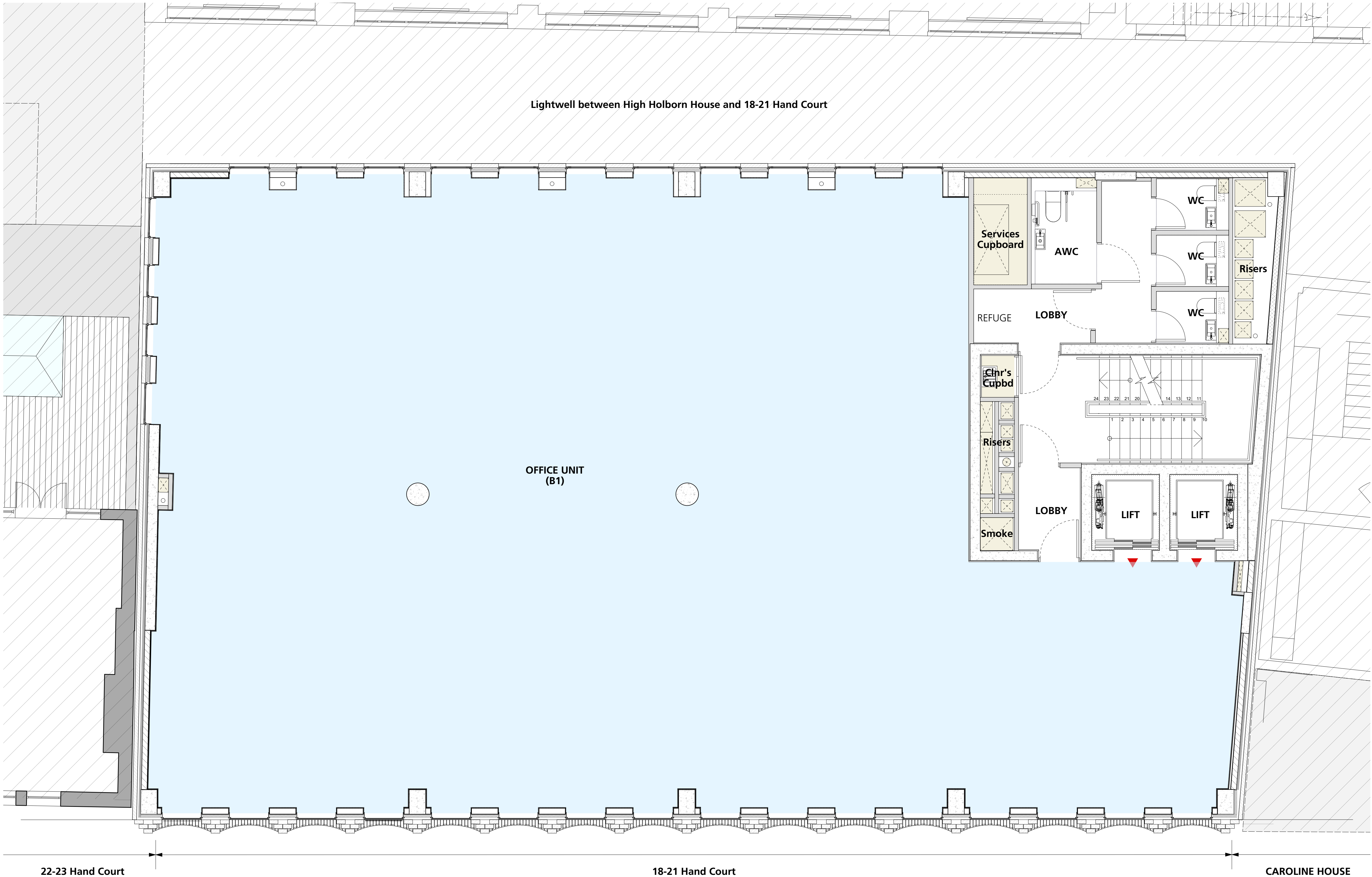
DRAWN BY

JR

REVISION

-

Information contained on this drawing is the sole copyright of
Buckley Gray Yeoman and is not to be reproduced without their permission.



1 Third Floor Plan as Proposed
Scale: 1:50

GENERAL NOTES.

All dimensions to be checked on site prior to commencement of any works, and/or preparation of any shop drawings.

Sizes of and dimensions to any structural elements are indicative only. See structural engineers drawings for actual sizes / dimensions.

Sizes of and dimensions to any service elements are indicative only. See service engineers drawings for actual sizes and dimensions.

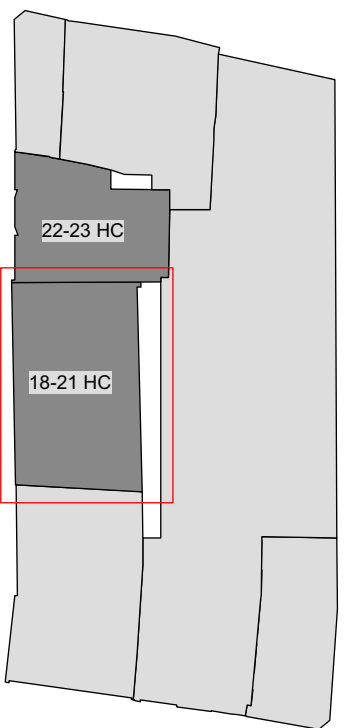
This drawing to be read in conjunction with all other Architect's drawings, specifications and other Consultants' information.

All proprietary systems shown on this drawing are to be installed strictly in accordance with the Manufacturers/Suppliers recommended details.

Any discrepancies between information shown on this drawing and any other contract information or manufacturers/suppliers recommendations is to be brought to the attention of the Architect

DO NOT SCALE FROM THIS DRAWING.

NOTES.



Key Plan

AREA USE KEY:

- Retail
- Office
- Residential
- Ancillary
- Outside of scope

- Planning Submission 21/09/2018

REVISION DATE

Buckley Gray Yeoman

Studio 4.04 The Tea Building 56 Shoreditch High Street
London E1 6JJ T: 020 7033 9913 F: 020 7033 9914

CLIENT

SRG Holborn Limited

PROJECT

18-21 Hand Court

DRAWING

General Arrangements -
Proposed Third Floor Plan

SCALE
1:50 @ A1 (1:100 @ A3)

DATE
Aug. 2018

DWG No.
975_1821HC-GA-03

DRAWING STATUS
PLANNING

DRAWN BY
JR

REVISION
-

Information contained on this drawing is the sole copyright of
Buckley Gray Yeoman and is not to be reproduced without their permission.