

**COMMERCIAL AREA:**

- Unit 1: 448m<sup>2</sup>
- Unit 2: 295m<sup>2</sup>
- Unit 3: 212m<sup>2</sup>
- Total: 955m<sup>2</sup>

**Waste Storage**  
 Recyclable & non-recyclable household & commercial waste storage to BS 5906:2005

No. of Apartments = 66  
 No. of Bedrooms = 134  
 Average No. of Bedrooms = 2.03  
 Total collection per week = 11360L

11 No. 1100L Eurobins = 12100L  
 4 No. 240L Wheelie bins = 960L

Total Commercial Area = 955m<sup>2</sup>

Collection per week = 4775L  
 Collection x2 per week = 2388L

4 No. 1100L Eurobins = 4400L  
 1 No. 240L Wheelie bin = 240L

**Cycle Parking**

114 Long stay secure residential spaces; 2 short stay spaces for visitors.

11 Long stay staff spaces; 2 short stay spaces for visitors

Total = 125x Secure parking spaces  
 4x Visitor parking spaces

**PLANNING**

17/08/18	Client Amendment	F
16/08/18	Client Amendment	E
15/08/18	Client Amendment	D
02/07/18	Client Amendment	C
16/02/18	Increased capacity of bicycle and bin storage	B
21/08/17	General layout revision	A

THIS DRAWING IS NOT TO BE SCALED. ONLY DIMENSIONS ARE TO BE FOLLOWED UNLESS THE DRAWING IS PART OF A PLANNING APPLICATION. CONDITIONS ARE LOGICAL DIMENSIONS BEYOND WORK COMMENSURABLE WITH THE INTENT OF THE DRAWING.  
 THIS DRAWING IS THE SOLE PROPERTY OF CH ARCHITECTS. OUR PARTNERSHIP LIMITED AND WILL NOT BE COPIED OR REPRODUCED IN ANY MANNER WITHOUT THE WRITTEN CONSENT OF CH ARCHITECTS.

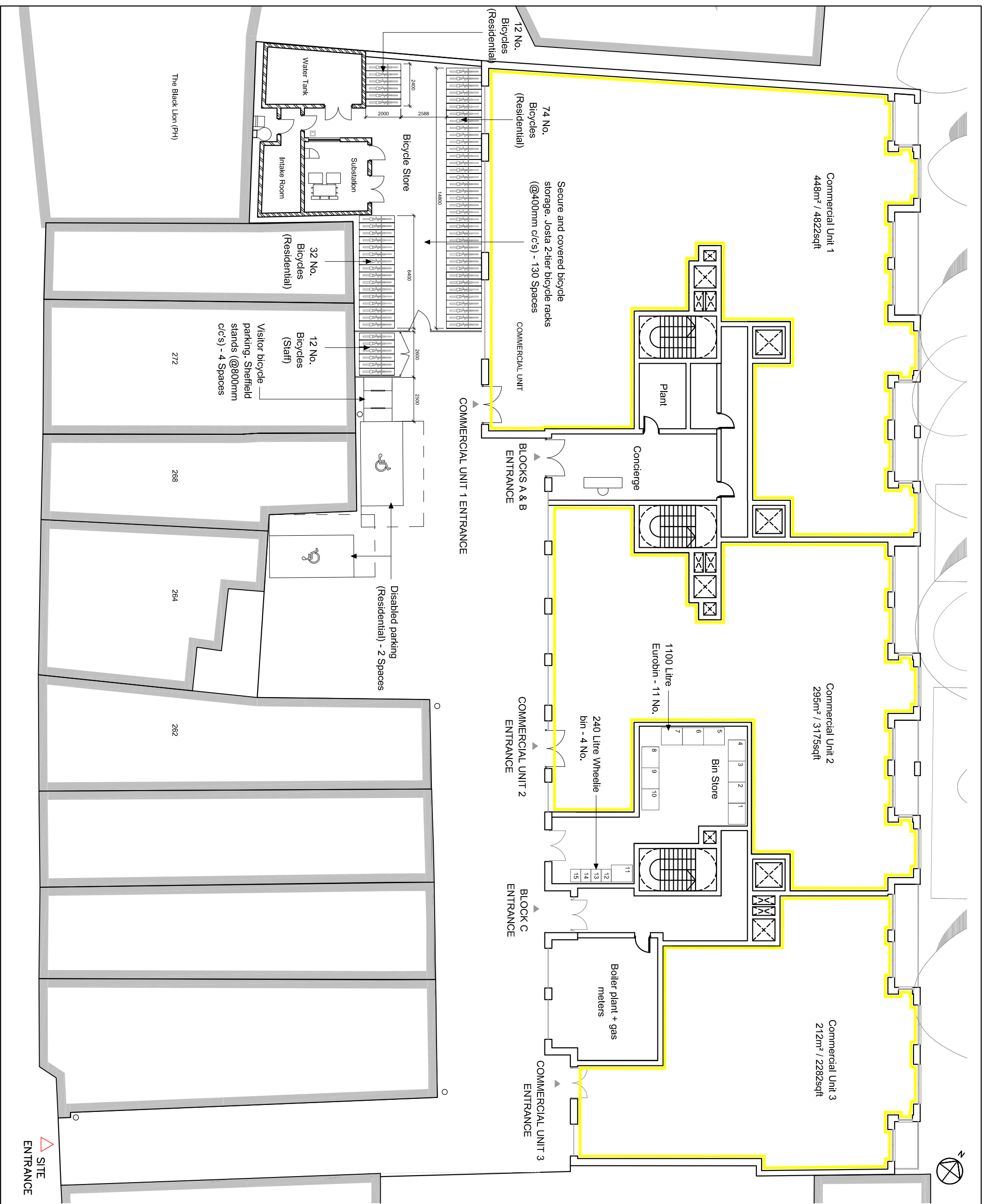
PROJECT  
**254 Kilburn High Road**  
 London NW6 2BS

**Ground Floor Plan**



41-42 FOLEY STREET, LONDON, W1V 7TS  
 T: +44 (0) 207 253 2526 / 440207 631 5405  
 E: mail@ch-architects.com / info@mrpartnership.co.uk  
 www.ch-architects.com / www.mrpartnership.co.uk

DATE:	23/11/2016	SCALE:	1:100@A1	DRAWN:	DT
DWG No.:	3144_050		1:200@A3	REV. No.:	F
FILE:	3144_050_GROUND FLOOR PLAN For Planning.dwg				



△ SITE ENTRANCE