

BARRIE HOUSE

LANDCAPE PROPOSAL

EX

A

EXTERIOR ARCHITECTURE

BARRIE HOUSE

LANDSCAPE PROPOSAL

Date	27/09/2018
Revision	D
Written	ExA
Checked	Shaun Lyons Landscape Architect
Approved	Sam Martin Director
Doc Ref:	ExA_1774_Landscape Proposal

## CONTENTS

### BARRIE HOUSE 2

#### 1 GENERAL

1.0 LANDSCAPE INTRODUCTION	4
----------------------------	---

#### 2 LANDSCAPE MASTERPLAN

2.0 LANDSCAPE MASTERPLAN	4
2.1 PRECEDENT IMAGES	5
2.2 LANDSCAPE GA	6

#### 3 SKETCH VIEWS

3.1 SKETCH VIEW 01	7
3.2 SKETCH VIEW 02	8

#### 4 SITE SECTIONS

4.1 SECTION 01	9
4.2 SECTION 02	9
4.1 SECTION 03	10

#### 5 MATERIALS & FURNITURE COMPENDIUM

5.1 HARD LANDSCAPE MATERIALS	11
------------------------------	----

#### 6 PLANTING PALETTE

6.1 TREE PLANTING	12
6.2 HEDGE PLANTING	12
6.3 CLIMBING & TRAILING SPECIES	12
6.4 AMENITY PLANTING	13

#### 7 LANDSCAPE SUSTAINABILITY

7.1 LANDSCAPE SUSTAINABILITY	15
------------------------------	----

#### 8 LANDSCAPE MANAGEMENT & MAINTENANCE

8.1 LANDSCAPE MANAGEMENT & MAINTENANCE	16
--	----

1.0 LANDSCAPE INTRODUCTION

LANDSCAPE APPROACH

The existing landscaping to Barrie house is unique due to the extensive existing tree planting found across the site. These tree planting offers huge benefits to the site in terms of screening & softening neighbouring properties and for ecology across the site. Retaining the existing trees and this park like aesthetic across the site has been a careful consideration and driver throughout the development of the new landscape proposals.

Key Objectives

- > Creating an enhanced arrival experience
- > Providing new boundary treatments in-keeping with the area
- > Retaining all existing tree planting
- > Enhancing sustainability & ecology across the site
- > To enable the proposed Architectural proposals to sit seamlessly into the landscape & context
- > Enhance the user experience
- > 'Light Touch' approach to landscape to retain existing character

The elevations from Broxwood Way & St Edmunds Terrace will be greatly enhanced with new low brick wall with a 600mm high metal fin railing overtop (to match the architectural proposals). This will help secure the site whilst providing a boundary treatment that is in-keeping with the proposals context. These boundaries will be softened with additional hedge and amenity planting.

The arrival sequence for both vehicular and pedestrian users will be enhanced through careful selection of surface materials and location of key new tree & amenity planting.

Permeable surfaces along with careful plant selection are to be utilised to enhance the sustainability of the site. Introducing increased areas of soft landscaping and will provide a boost to the local flora and fauna.

The design of the landscape has been developed to have minimal impact on the existing residents of Barrie House whilst providing them an enhanced, more enjoyable and usable spaces.

2.0 LANDSCAPE MASTERPLAN



LEGEND

- 1 Parking & arrival zone
- 2 Amenity planting
- 3 Boundary wall & railing
- 4 Resurfacing to existing paths
- 5 Retained tree planting & bulb underplanting
- 6 Buffer & screening planting
- 7 Bin store
- 8 Private terrace
- 9 Seating & points of retreat
- 10 Communal lawn areas

2.1 PRECEDENT IMAGES



RETAIN EXISTING MATURE TREES



PROPOSED MULBERRY TREE



ORNAMENTAL PLANTING



HEDGE & SCREENING PLANTING



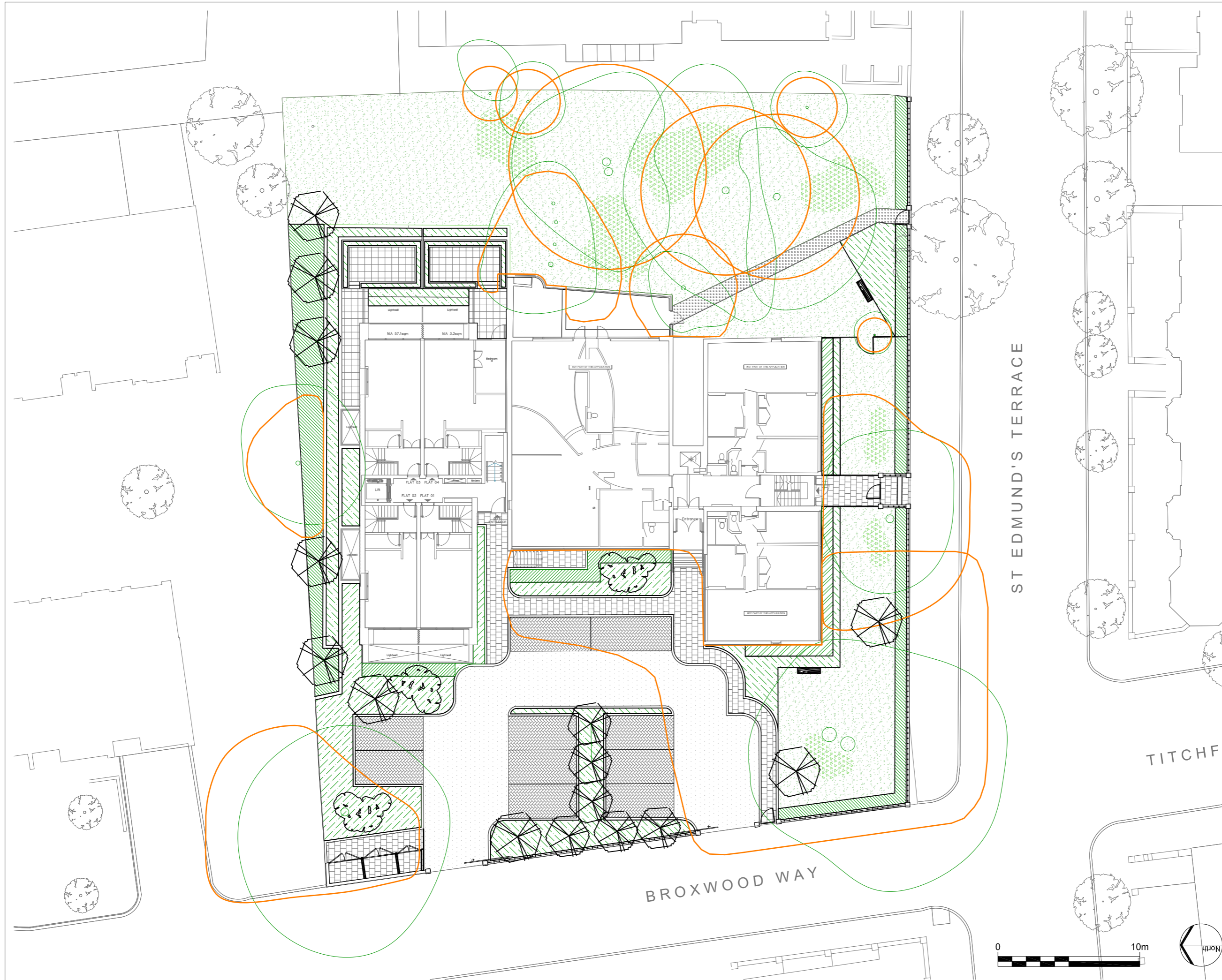
COMMUNAL LAWN + POINTS OF RETREAT



PRIVATE GARDEN TERRACES



Z:\LONDON PROJECTS\2017\1774\_BARRIE HOUSE\01 CAD\00 XREF\1774\_EXA\_LINework.dwg



No dimensions are to be scaled from this drawing. All dimensions are to be checked on site. Area measurements for indicative purposes only.

This drawing is the property of Exterior Architecture Ltd. No part of the drawing may be reproduced in any manner without permission from Exterior Architecture Ltd.

Client

- HARD LANDSCAPE**
- PAVING TYPE 01 - 200/173x173mm PERMEABLE BLOCK PAVING  
COLOUR: CEDAR  
HYDROPAVE TEGULA BY TOBERMORE OR SIMILAR APPROVED
  - PAVING TYPE 02 - RESIN BOUND AGGREGATE (VEHICULAR)  
COLOUR: BUFF
  - PAVING TYPE 03 - RESIN BOUND AGGREGATE (PEDESTRIAN)  
COLOUR: BUFF
  - PAVING TYPE 04 - 600x600x60mm YORKSTONE PAVING
  - PAVING TYPE 05 - 240x120x60mm BLOCK PAVING  
COLOUR: BRACKEN  
HYDROPAVE 240 BY TOBERMORE OR SIMILAR APPROVED
  - BOUNDARY TYPE 01  
BRICK WALL 900x100mm WITH 600mm FLAT TOP RAILING
  - EXISTING RAILING & GATE TO BE RETAINED
  - BENCH SEATING

- SOFT LANDSCAPE**
- EXISTING RETAINED TREES WITH ROOT PROTECTION AREA
  - PROPOSED TREE PLANTING
  - EXISTING HEDGE PLANTING (RETAINED)
  - PROPOSED HEDGE & BUFFER PLANTING
  - PROPOSED AMENITY PLANTING
  - PROPOSED LAWN WITH BULB PLANTING

C	Co-ordination with Thames Water	27.09.2018
B	Updated tree information	27.06.2018
A	Issue for Planning	20.12.2017
Rev	Description	Date

**EXTERIOR ARCHITECTURE**  
 LONDON: Studio 1S, Hewlett House, Havelock Terrace, London, SW8 4AS  
 MANCHESTER: Studio 537, The Royal Exchange, St Anns Square, Manchester, M2 7DH

E-Mail: office@exteriorarchitecture.com  
 Web: www.exteriorarchitecture.com

Project title  
**BARRIE HOUSE**

Drawing title  
**LANDSCAPE GENERAL ARRANGEMENT PLAN**

Issued By	London	T: 020 7978 2101
Scale	1:250 @ A3	Drawn ExA
Status	PLANNING	Checked SL
Date	20.12.2017	Approved SM

Drawing number  
**1774\_001**

Revision  
**C**



3.1 SKETCH VIEW 01  
ARRIVAL SPACE



VIEW FROM BROXWOOD WAY

3.1 SKETCH VIEW 01  
PRIVATE TERRACE



VIEW FROM PRIVATE TERRACES TO ST EDMUNDS TERRACE



4.1 SECTION 01



01 ELEVATION - ST EDMUNDS TERRACE

01'



02  
KEY PLAN



02 ELEVATION - BROXWOOD WAY

02'

4.1 SECTION 03



03 EASTERN SECTION ELEVATION

03'



KEY PLAN

5.1 HARD LANDSCAPE MATERIALS

SURFACE TYPE 01 - PERMEABLE BLOCK PAVING



To entrance paths & primary paths

SURFACE TYPE 02 - RESIN BOUND AGGREGATE



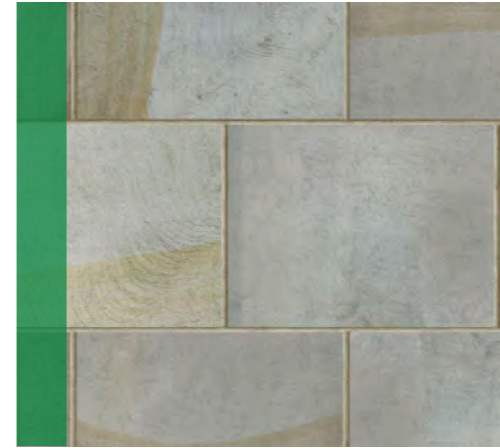
To vehicular arrival space

SURFACE TYPE 03 - RESIN BOUND AGGREGATE



To secondary paths

SURFACE TYPE 04 - YORKSTONE PAVING



To private terraces

SURFACE TYPE 05 - PERMEABLE PARKING BAYS



Permeable parking bays

BENCH SEATING

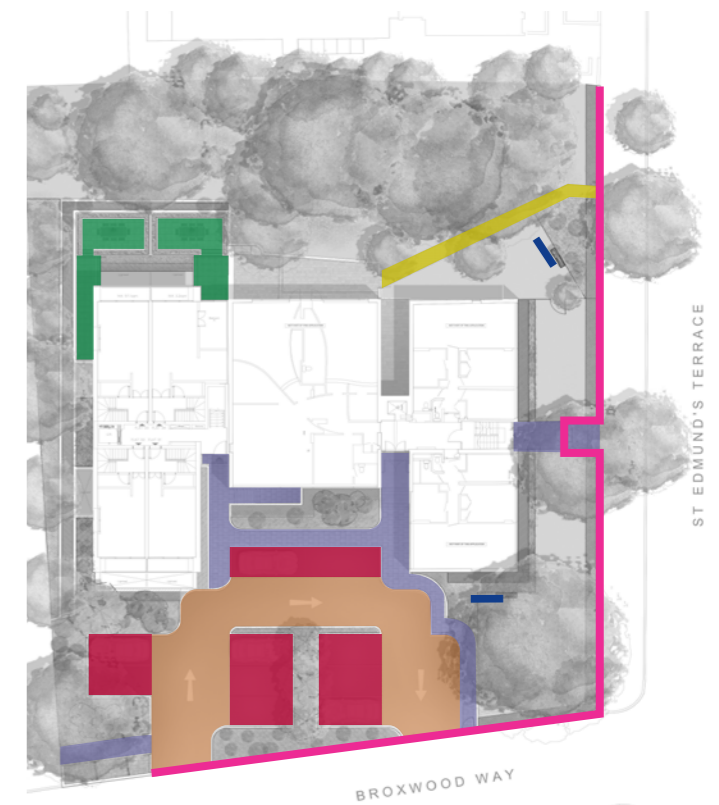


To communal lawn areas

BOUNDARY TYPE 01



Brick wall & flat top railing



6.1 TREE PLANTING

The large stands of existing trees that are to be retained will continue to provide natural screening to the built forms and create the open park like setting to the East of the site. New proposed tree planting is smaller in scale, appropriate for there location and purpose i.e feature tree planting to the entrance and parking areas & smaller multistemmed species in closer proximity to the building. Species have been selected to provide variety and seasonal interest and supplement the existing mature tree stock.



A *Ilex aquifolium* 'JC van Tol'



B *Morus alba* 'Platanifolia'



C *Quercus robur* 'Koster'



D *Quercus ilex*

6.2 HEDGE PLANTING

Primary use of hedging across the site is to assist with screening and privacy for both the existing residents and future occupants. Key screening hedges will be an evergreen/semi evergreen species such as Griselinia & Carpinus. Seasonal colour of Berberis will compliment the colours found in the amenity planting.



*Griselinia littoralis*



E *Carpinus betulus*



*Berberis thunbergii*

6.3 CLIMBING & TRAILING SPECIES

Blank elevations and retaining elements will be able to be softened through the use of climbers and trailing species.



*Trachelospermum jasminoides*



*Hydrangea petiolaris*

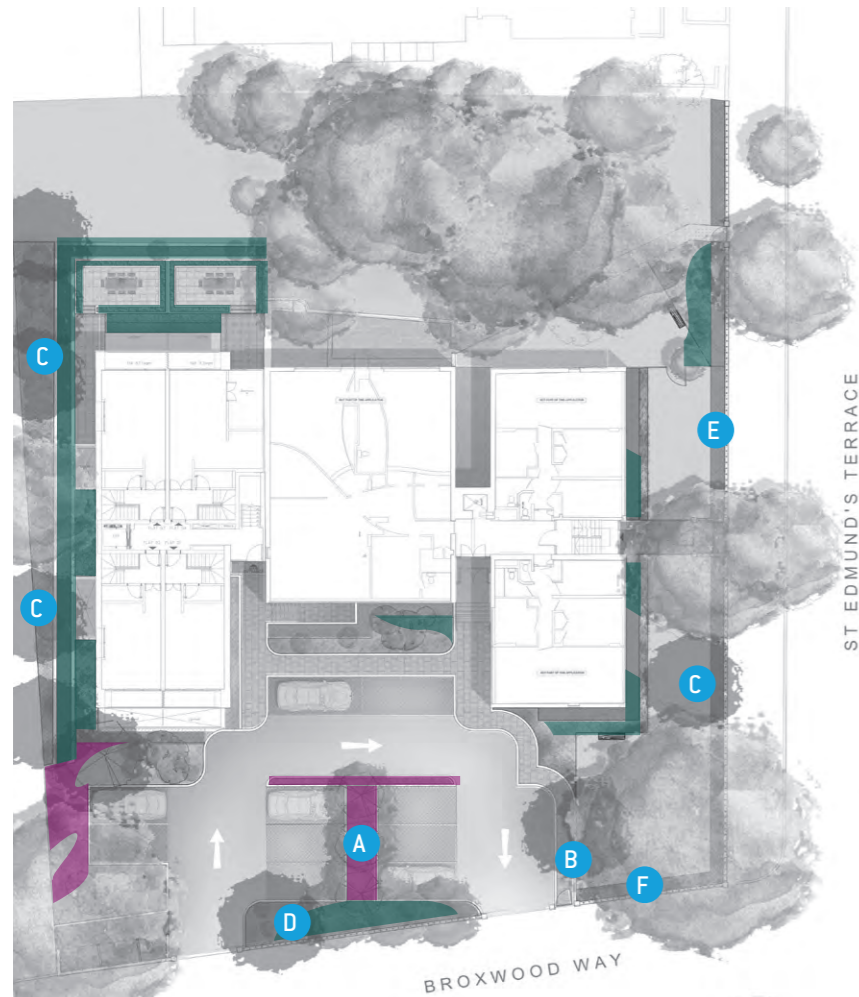
### 6.4 AMENITY PLANTING

Careful selection of plant species will ensure year round interest with plants that will thrive in there designated areas.

Plant species for areas of extended shade such as Hosta spp, Heuchera, Bergenia and a variety of ferns will create dense planting beds of lush green and purple foliage.

Grasses and plant species with seasonal interest have been introduced to the Southern aspects that will receive more sunlight. The movement of the grasses will help soften the built environment whilst the selection of purple flowers will provide a consistent colour theme throughout the planting,

Species have been selected to be hardy and low maintenance to ensure successful establishment.



*Hosta spp*



*Heuchera*



*Bergenia cordifolia*



*Dryopteris filix-mas*



Theme image 01



Theme image 02



*Liriope muscari*



*Cornus sanguinea*



*Agapanthus africanus*



*Stachys byzantina*



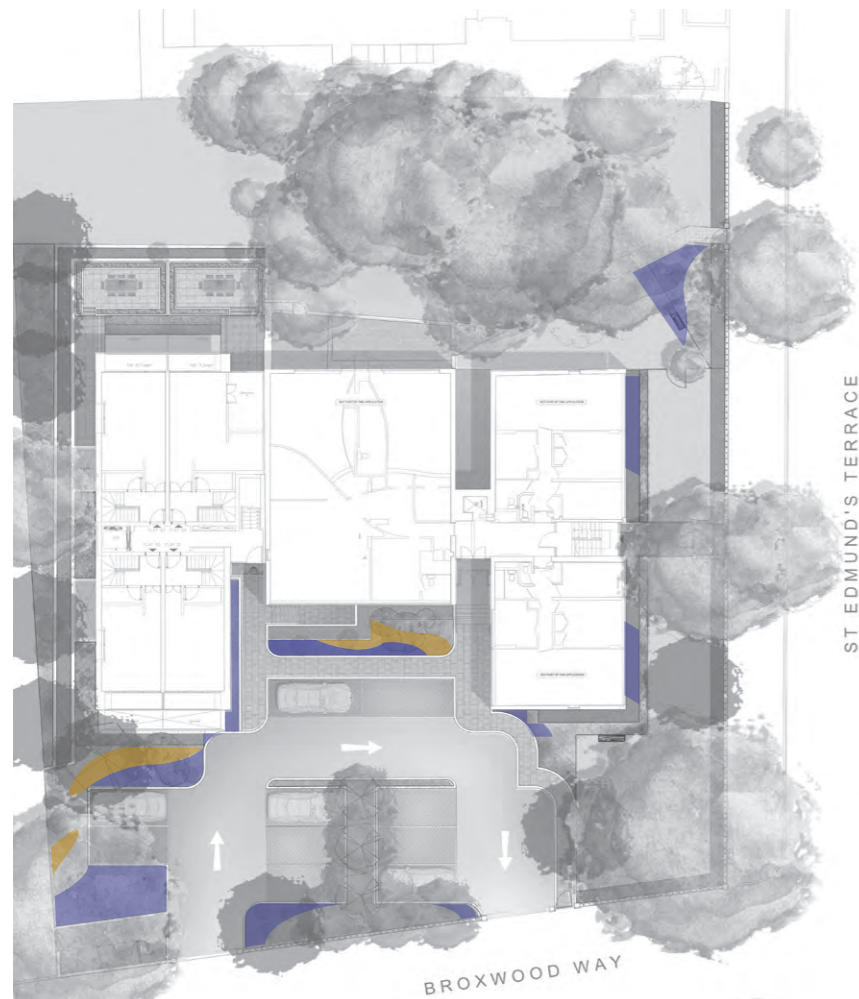
*Lavandula angustifolia*



*Festuca glauca* 'Elijah Blue'



*Salvia nemorosa*



*Allium hollandicum*



*Verbena bonariensis*



*Stipa tenuissima*



*Deschampsia caespitosa*



Theme image 01



Theme image 02