

10/10/18






Barrafina at viaduct level:

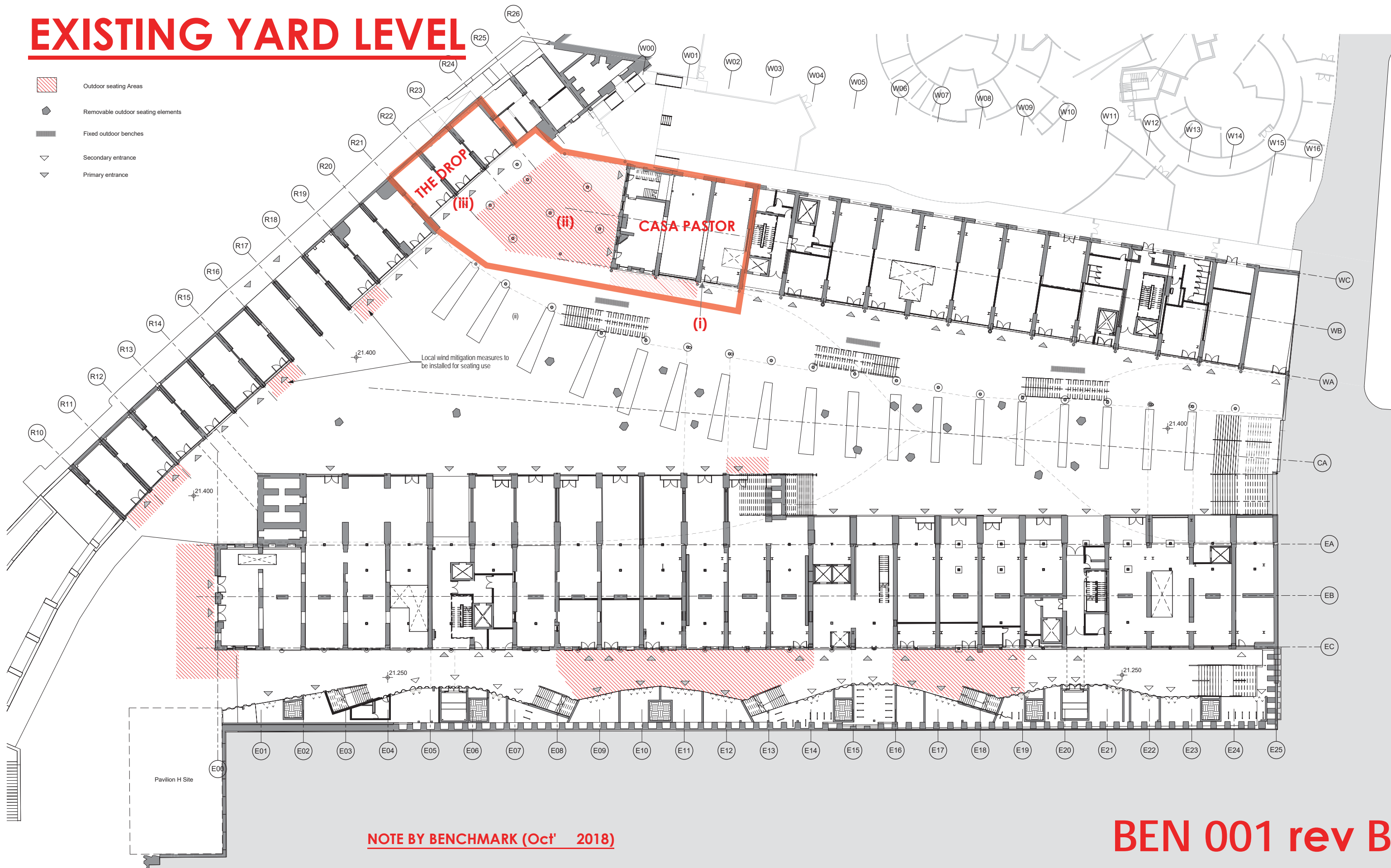
- a) x1 proposed blade sign with the word: "barrafina" and external lighting (dwg BKX 720 rev C);

Casa Pastor at yard level:

- (i) x1 proposed blade sign with the words: "CASA PASTOR" (dwg A2/A213505 01)
- (ii) x2 signs within canopy of external bar with the words: "PLAZA PASTOR" internally lit (dwg 17704 – Bar area signs and ELP 007); and,
- (iii) x1 sign to Bagley Walk. Double sided projecting sign with the words: "HART BROTHERS THE DROP C.D.Y WINE BAR AND RESTAURANT N1C" (dwg ELP013).

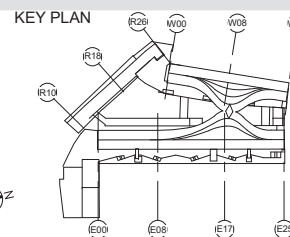
EXISTING YARD LEVEL

-  Outdoor seating Areas
-  Removable outdoor seating elements
-  Fixed outdoor benches
-  Secondary entrance
-  Primary entrance



NOTE BY BENCHMARK (Oct' 2018)

THE PROPOSED SIGNAGE IS INDICATED IN POSITIONS: (i) x1 proposed blade sign with the words: "CASA PASTOR", (ii) x2 signs within canopy of external bar with the words: "PLAZA PASTOR" internally lit; and, (iii) x1 sign to Bagley Walk. Double sided projecting sign with the words: "HART BROTHERS THE DROP C.D.Y WINE BAR AND RESTAURANT N1C" (see other plans for precise details).



Heatherwick studio

Web: <http://www.Heatherwick.com>
 Email: studio@heatherwick.com
 356 - 354 Gray's Inn Road London
 UK +44 (0)20 7833 8800
 fax: +44(0)20 7833 8400

project COAL DROPS YARD

title Outdoor Seating Plan - Yard Level

scale 1 : 250 @ A1
 1 : 500 @ A3
 date 18/09/15

drawn HS
 checked PEZ
 H5 job no. 891

FOR APPROVAL
 drawing no. PL-1073
 rev. -

Casa Pastor at yard level:

(ii)

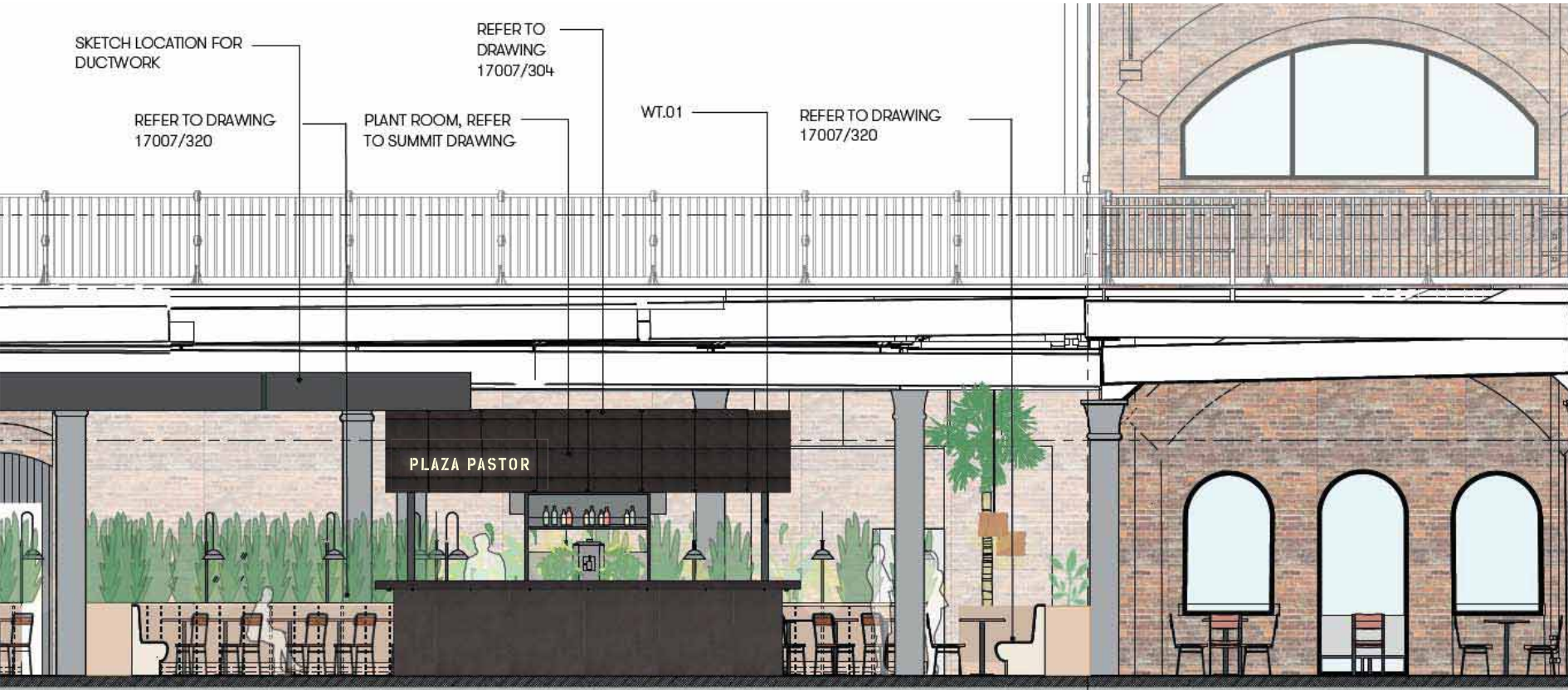
X2 signs within canopy of external bar
with the words: "PLAZA PASTOR"
internally lit (dwg 17704 – Bar area signs
and ELP 007)

17704 - Bar area signs

Router cut text in cladding panels
with 50mm deep tray behind to hold LED's at the bottom.
Light to wash up.



ELP007 CASA PASTOR DEVELOPMENT - BAR AREA





3 Elevation 1
Scale: 1:25

HANGER DETAIL

BLACKENED STEEL
CLADDING