

10/10/18






Barrafina at viaduct level:

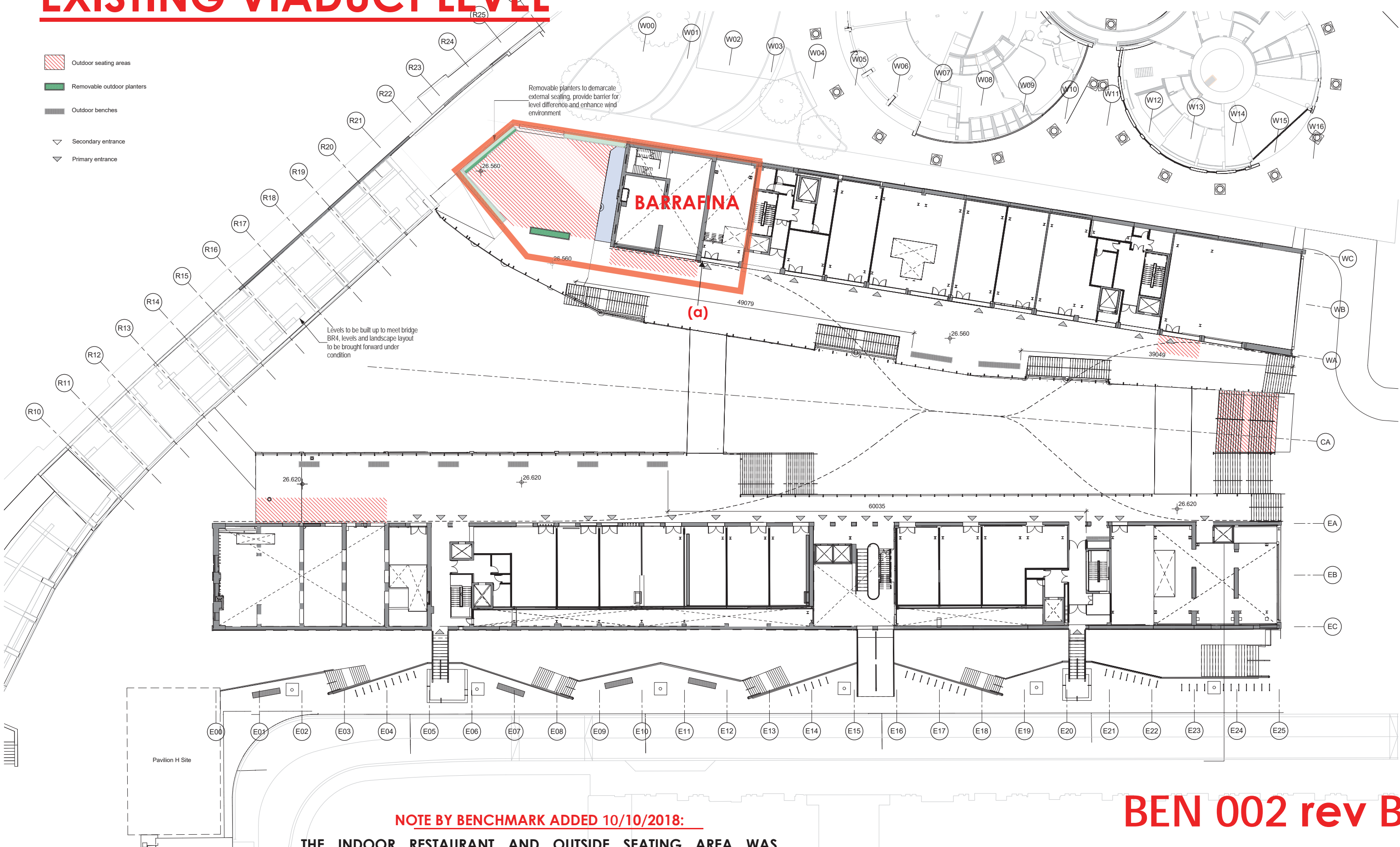
- a) x1 proposed blade sign with the word: "barrafina" and external lighting (dwg BKX 720 rev C);

Casa Pastor at yard level:

- (i) x1 proposed blade sign with the words: "CASA PASTOR" (dwg A2/A213505 01)
- (ii) x2 signs within canopy of external bar with the words: "PLAZA PASTOR" internally lit (dwg 17704 – Bar area signs and ELP 007); and,
- (iii) x1 sign to Bagley Walk. Double sided projecting sign with the words: "HART BROTHERS THE DROP C.D.Y WINE BAR AND RESTAURANT N1C" (dwg ELP013).

EXISTING VIADUCT LEVEL

-  Outdoor seating areas
-  Removable outdoor planters
-  Outdoor benches
-  Secondary entrance
-  Primary entrance



Removable planters to demarcate external seating, provide barrier for level difference and enhance wind environment

Levels to be built up to meet bridge BR4, levels and landscape layout to be brought forward under condition

BARRAFINA

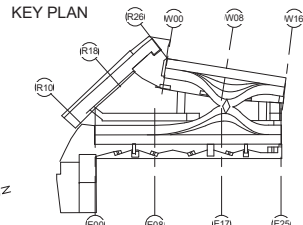
(a)

NOTE BY BENCHMARK ADDED 10/10/2018:

THE INDOOR RESTAURANT AND OUTSIDE SEATING AREA WAS APPROVED BY 2015/6015/P AND THE OUTDOOR RESTAURANT AREA APPROVED 2018/2441/P ON 30/07/18.

THE PROPOSED SIGNAGE IS INDICATED IN POSITIONS (a) x1 proposed blade sign with the word: "barrafina" and approved landlord's external lighting (see other plans for precise details).

BEN 002 rev B



Heatherwick studio

Web: <http://www.Heatherwick.com>
Email: studio@heatherwick.com
356 - 354 Gray's Inn Road London
UK +44 (0)20 7833 8800
fax: +44(0)20 7833 8400

project COAL DROPS YARD

title Outdoor Seating Plan - Viaduct Level

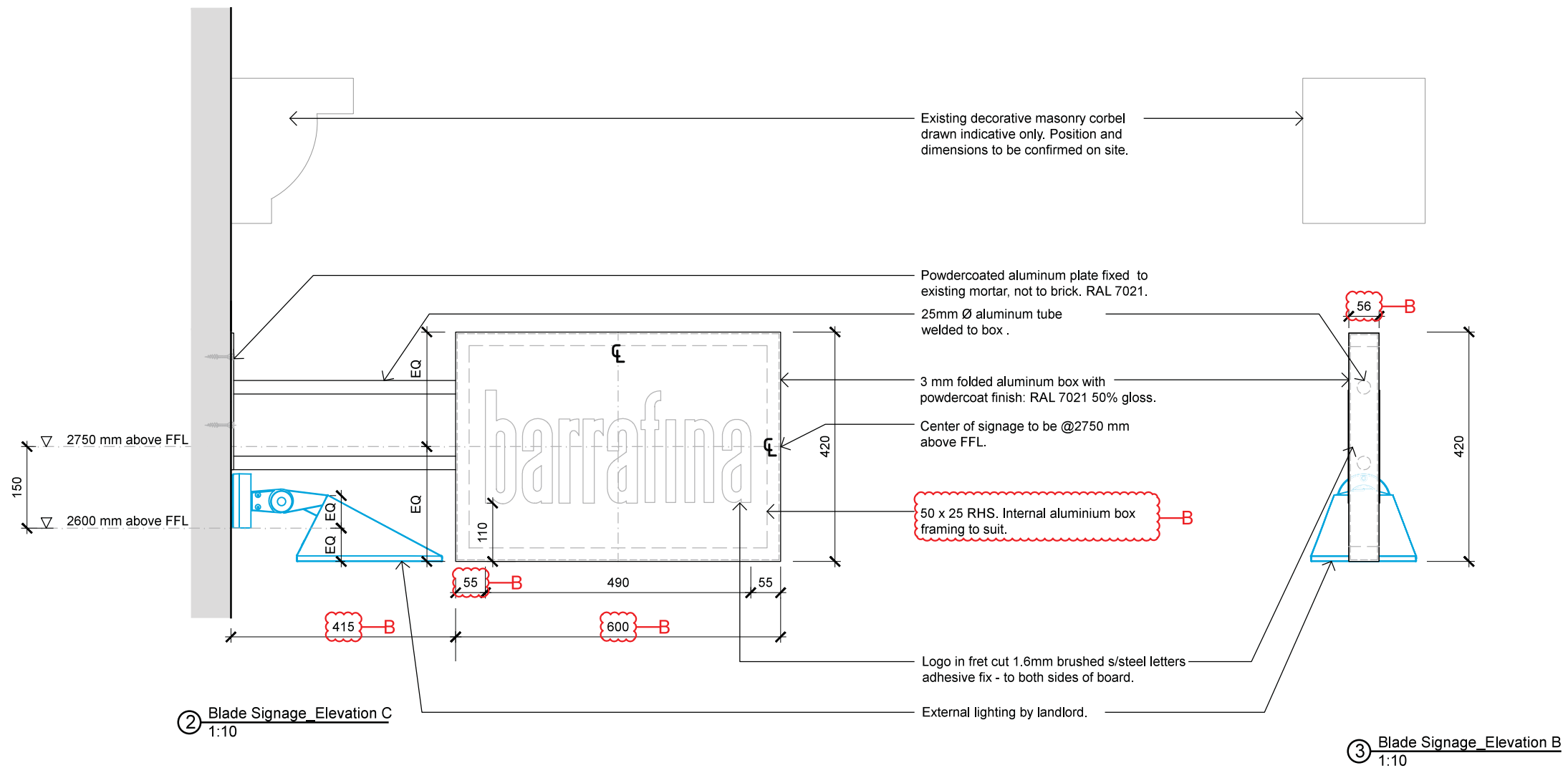
scale 1:250 @ A1
1:500 @ A3
date 18/09/15

drawn HS
checked PEZ
HS job no. 891

FOR APPROVAL
drawing no. PL-1074
rev. -

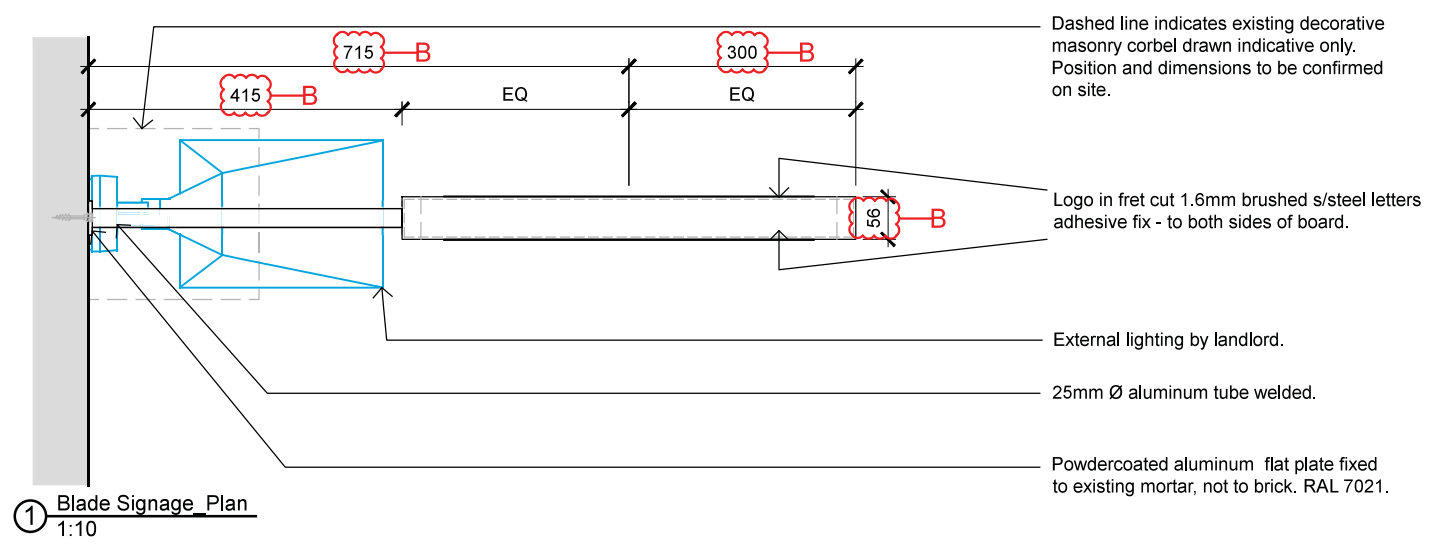
Barrafina at viaduct level: a)

x1 proposed blade sign with the
word: "barrafina" and external
lighting (dwg BKX 720 rev C)



② Blade Signage_Elevation C
1:10

③ Blade Signage_Elevation B
1:10



① Blade Signage_Plan
1:10

NOTE:
Dimension and position
to be agreed with
Landlord previous to
manufacture and
installation.

| Revision | | Date | Issue | Notes |
|------------|--------|------|-------|--------------------|
| 06/04/2018 | Rev. A | | | Construction Issue |
| 17/05/2018 | Rev. B | | | Form B comments |

| Revision | | |
|----------|-------|-------|
| Date | Issue | Notes |
| | | |