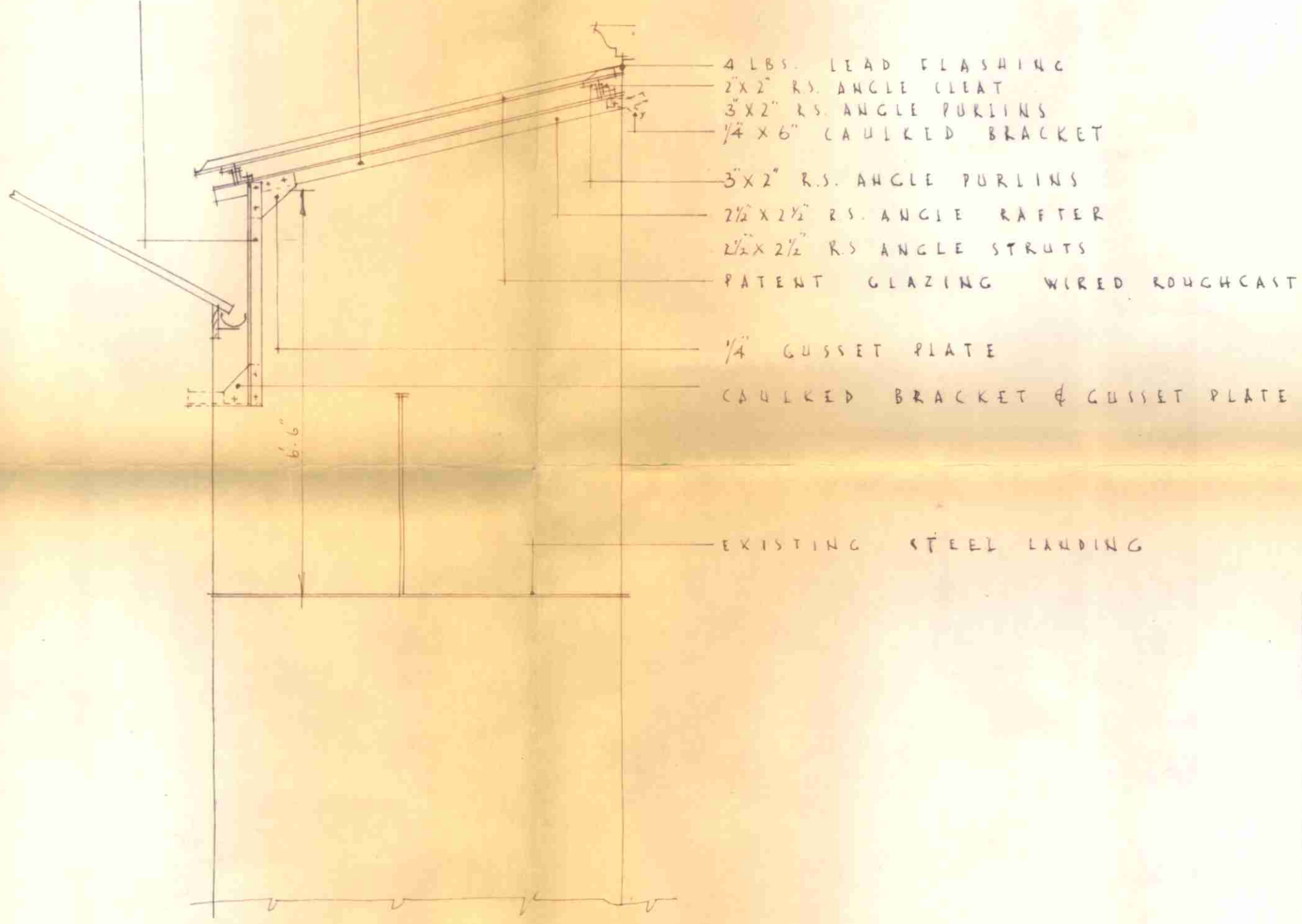


PLAN OF
PATENT GLAZING

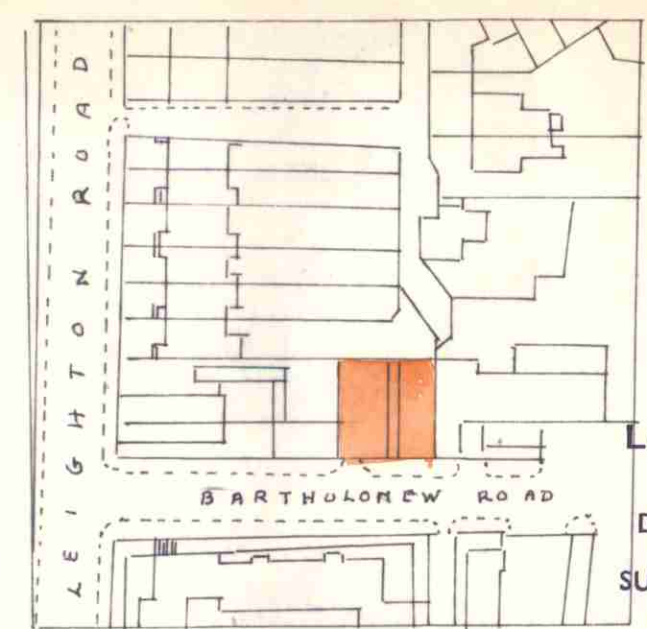
PLAN OF
LANDING

RAFTERS & STRUTS
AT 6'-0" CENTRES



HALF INCH SCALE SECTION A-A

- 4 LBS. LEAD FLASHING
- 2"x2" R.S. ANGLE CLEAT
- 3"x2" R.S. ANGLE PURLINS
- 1/4"x6" CAULKED BRACKET
- 3"x2" R.S. ANGLE PURLINS
- 2 1/2"x2 1/2" R.S. ANGLE RAFTER
- 2 1/2"x2 1/2" R.S. ANGLE STRUTS
- PATENT GLAZING WIRED ROUGHCAST
- 1/4" GUSSET PLATE
- CAULKED BRACKET & GUSSET PLATE
- EXISTING STEEL LANDING



SITE PLAN SCALE 1/1250

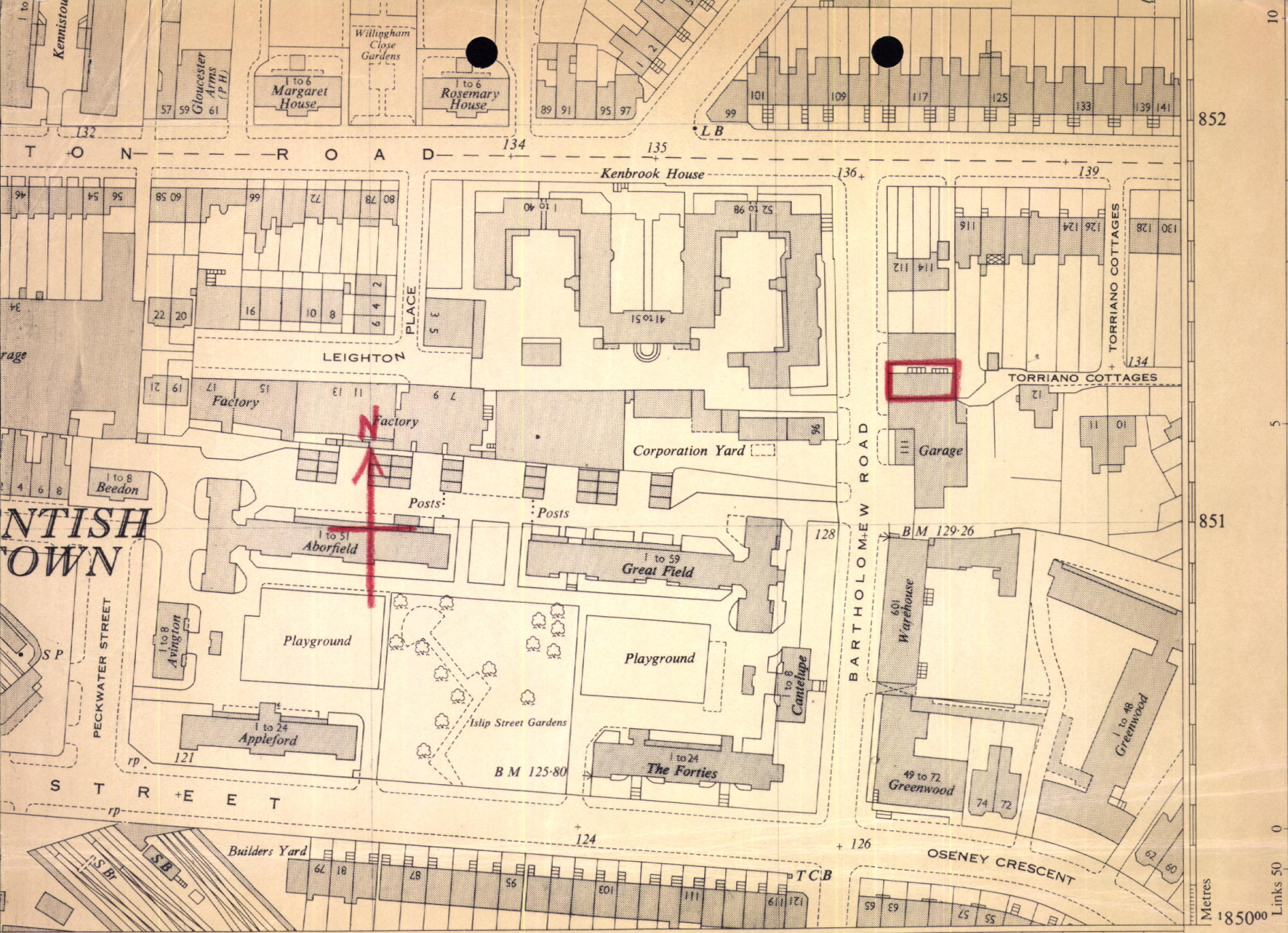
LONDON BOROUGH OF CAMDEN
PRESENTED TO THE PLANNING AND
DEVELOPMENT COMMITTEE APPLICATIONS
SUB-COMMITTEE ON 19 APR 1967

CTP/F12/17/B/3385

DRWC. NO 1. MAR 1967
SCALES: 1/8" & 1/2" TO ONE FOOT

115 BARTHOLOMEW RD. N.W.5
PROPOSED PATENT GLAZED ROOF OVER CENTRE AREA

HARMAN HEALY & CO.
8 RUSSELL CHAMBERS
BURY PLACE W.C.1



ANTISH
TOWN

293

No 3 WARD

294

TQ2984 NW

529500

Metres

185000

Links 50

851

852

10

5

0

Based upon the Ordnance Survey
Map with the sanction of the
Controller of H.M. Stationery Office
Reproduced by the Architect,
London County Council.
Crown Copyright Reserved