

EQUIPMENT SCHEDULE:

- (A) AUTOMATIC FILL SET & EXPANSION VESSEL, BERCO FLEXIFILL STD, 2 NO. 50 LTR WALL MTD VESSELS, & CONNECTING PIPING.
- (B) GAS FIRED ATMOSPHERIC BOILER, HVAL MODEL ATMOGAS 45.
- (C) MAXCHESTER TYPE HI HORIZONTAL CALORIFIER C/W MTDZ4 IMMERSION HEATER.
- (E) FLUE DILUTION FAN: AIDELLE AIRFLOW MODEL G8DF 3.
- (P1) GRINDOS UPSD50-100F PRIMARY, SINGLE PHASE, 11KV, 500VA.
- (P2) GRINDOS UPSD 40-80 F HEATERS, SINGLE PHASE, 11KV, 400VA.
- (P3) GRINDOS UPSD 20-07N SECONDARY, SINGLE PHASE, 11KV, 200VA.

RECORD DRAWING

11/8mm Original size
 Design & Installation
 Air Conditioning
 Electrical
 Heating & Ventilation
 Services & Ventilation

REVNO	REV DESCRIPTION	DATE

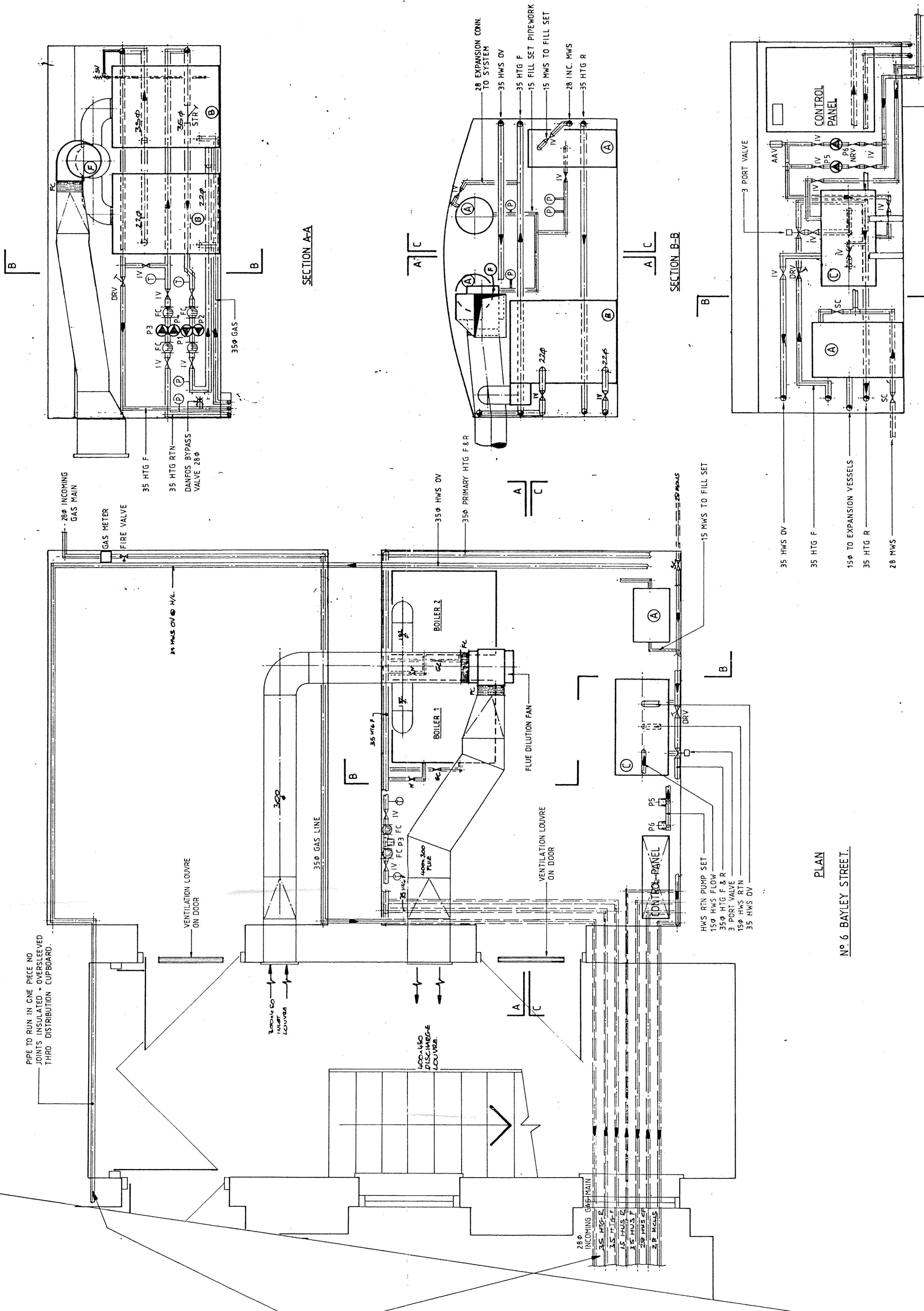
THE BEDFORD ESTATES

PROJECT
 7 BAYLEY STREET
 LONDON
 WC1

TITLE
 BASEMENT PLAN
 BOILER ROOM DETAILS

DRAWING NUMBER	1097/314 RD
REVISION	
DATE	JAN 1994
SCALE	1:20

Built
Environment
Engineering
 LONDON



FOR CONTINUATION REFER TO DRG 1096/209

PLAN
 No 6 BAYLEY STREET.

SECTION C-C

SECTION A-A

SECTION B-B