

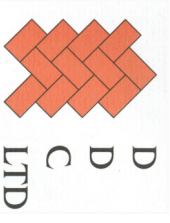
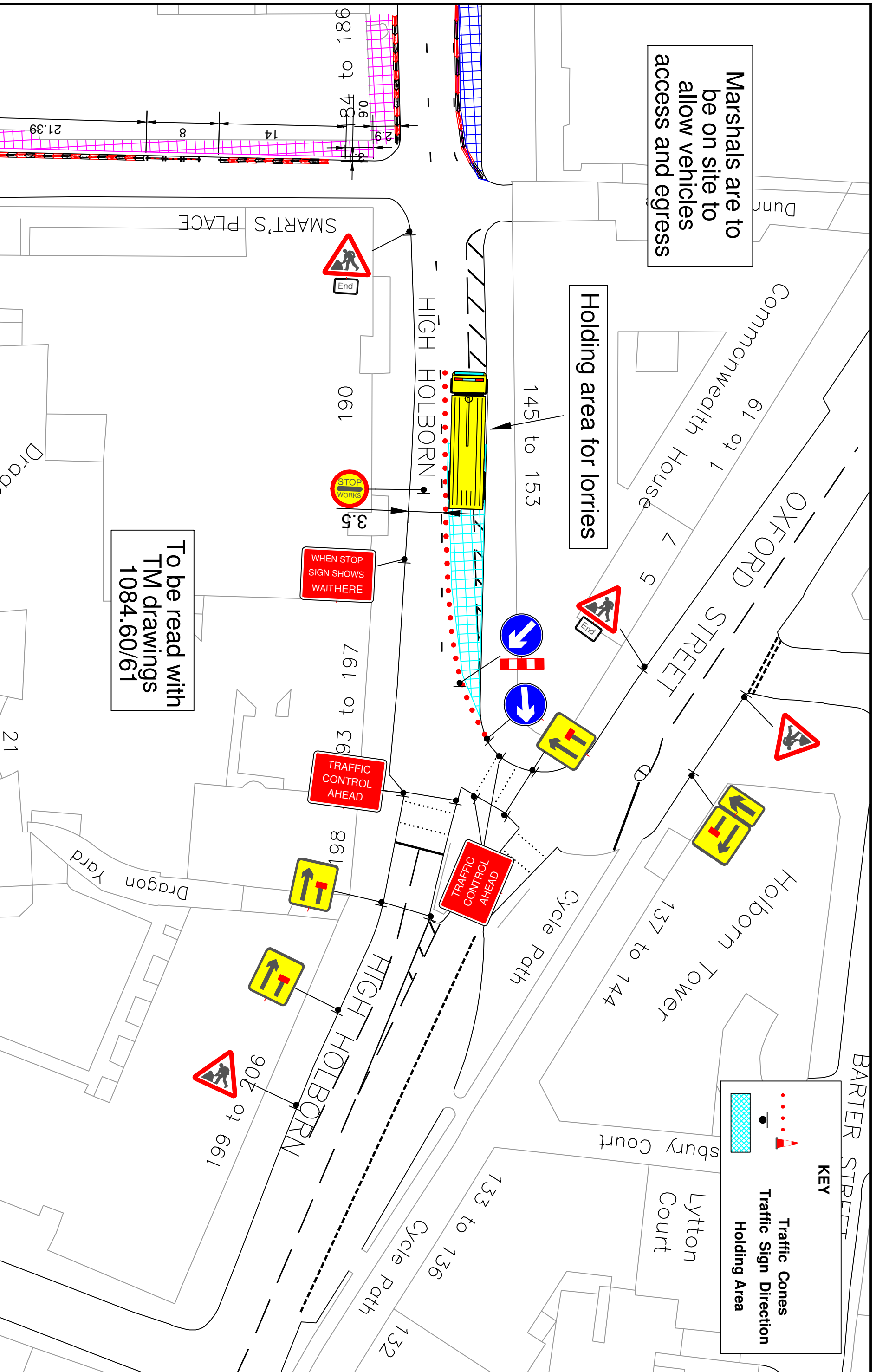
Marshals are to be on site to allow vehicles access and egress

Holding area for lorries

To be read with TM drawings 1084.60/61

KEY

- Traffic Cones
- Traffic Sign Direction
- Holding Area



D D C Limited

182 - 184 HIGH HOLBORN
 JCT SMART'S PLACE
 HOLDING AREA FOR LORRIES
TEL: 0800 6444 654



Keiton Traffic Management

1) TEMPORARY TRAFFIC MANAGEMENT TO BE SET OUT IN ACCORDANCE WITH CHAPTER 8 AND SAFE WORKING PRACTICES.
 2) DUE TO OBSTRUCTIONS, LOCATIONS OF ADVANCE WARNING SIGNS MAY VARY ON SITE.
 3) THIS PLAN IS FOR THE SPECIFIED CLIENT, IT IS NOT TO BE COPIED, ALTERED, REPRODUCED OR REDISTRIBUTED WITHOUT AUTHORIZATION FROM KEITON TRAFFIC MANAGEMENT.
www.ktmdrawings.com

DATE DRAWN	05.10.17	Drawing No.	1084.64
DRAWN BY	KTM KH		
CHECKED BY	KTM AP		
SCALE	N.T.S.		