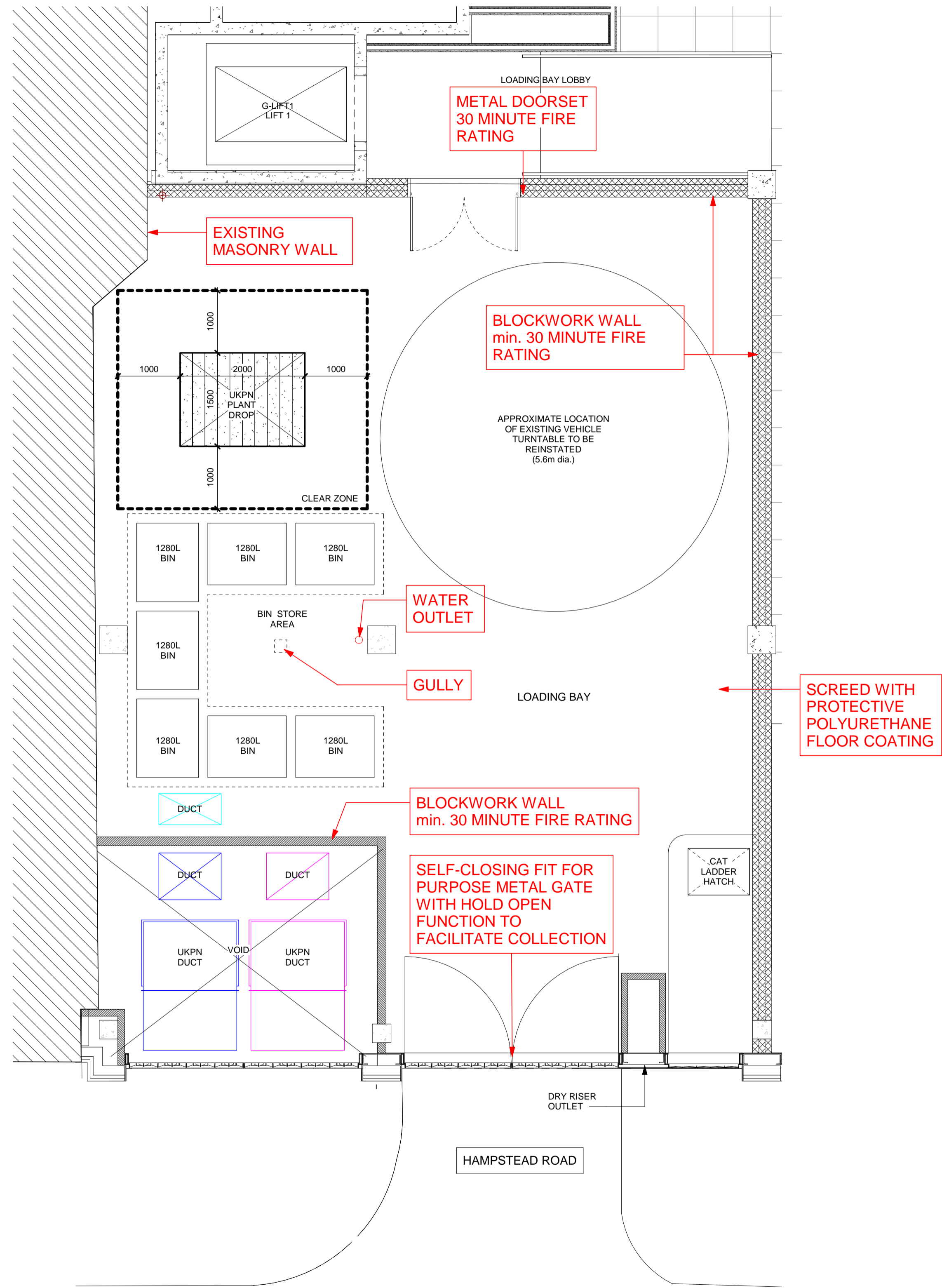


COMMERCIAL BIN STORAGE PROVISION

7 x 1280 litre Bin



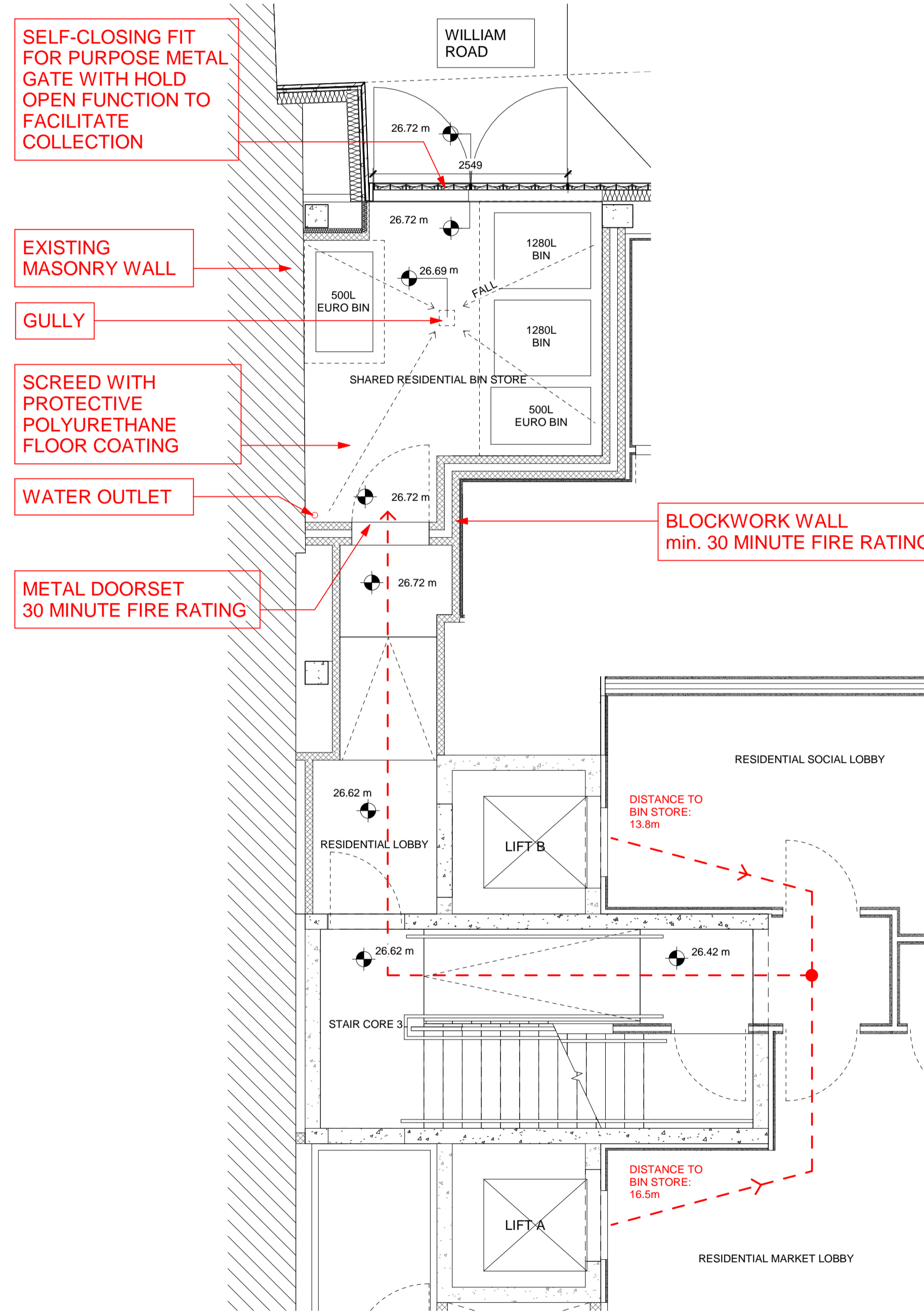
1 Commercial Bin Storage
SCALE 1 : 50

RESIDENTIAL BIN STORAGE PROVISION AS CAMDEN PLANNING GUIDANCE

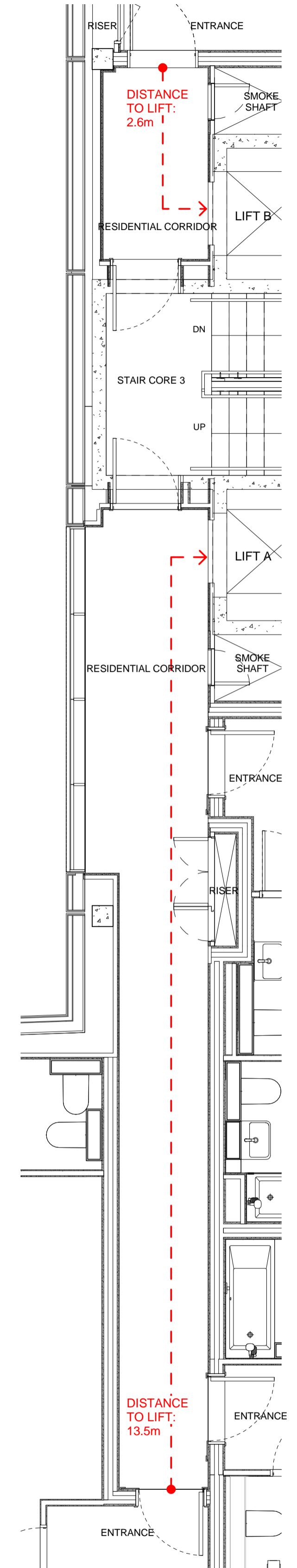
APARTMENT TYPE	QUANTITY	PROJECTED WEEKLY WASTE
1 BEDROOMS	1	100 litres
2 BEDROOMS	9	1530 litres
3 BEDROOMS	7	1680 litres
TOTAL	17	3310 litres

PROPOSED BIN PROVISION

REFUSE BINS	RECYCLING BINS
1 x 1280 litre Bin	1 x 1280 litre Bin
1 x 500 litre Euro Bin	1 x 500 litre Euro Bin



2 Residential Bin Storage
SCALE 1 : 50



3 Level 5 Plan (Worst case)
SCALE 1 : 50

NOTES FOR ALL DRAWINGS:
This drawing is to be read in conjunction with the contract documents and all other consultants' drawings, specifications and schedules, including but not limited to the structural engineer's drawings, specifications and schedules for all structural design, sizes and performance criteria. This drawing shows the design intent only. This is not a fabrication drawing.
Do not scale from this drawing. All dimensions, including setting out dimensions, and all levels shown are to be checked and verified by the contractor on site and are subject to a site survey. Any discrepancies found in this drawing, or between what is shown on the drawings and conditions found after opening up of the existing works, are to be reported to the Architect immediately, and in accordance with the provisions of the building contract. Any modifications, or due to unforeseen conditions related to the existing structure or fabric, shall be agreed in writing with the Architect and issued for approval in accordance with the provisions of the building contract.
Marks Barfield architects has prepared this drawing using information derived from a survey prepared by Lane & Frankham dated 28 March 2017, upon which it is entitled to rely. Marks Barfield Architects accepts no liability for the survey information nor does it warrant that information shown on the drawing related to the existing structure and fabric is either accurate or complete.
© Marks Barfield Architects 2018

Rev	Date	by	Description	Key

Client
Lazari Properties 2 Limited

Greater London House
Hampstead Road
London NW1 7QX
United Kingdom
Tel +44 20 7388 5444
Fax +44 20 7388 6557

Architect
marks barfield architects

50 Bromells Road
London SW4 0BG
United Kingdom
Tel +44 20 7501 0180

Stephenson House, 75 Hampstead Road, London, NW1 2PL				
Drawing Title Commercial & Residential Bin Store				
Job no 601	Scale (@ A1) 1 : 50	Drawing No SK-313	Revision	Status Tender 2
Date 04/09/18	Checked YB			