

PLAY FEATURES

Hammocks



Hammocks



High Swing



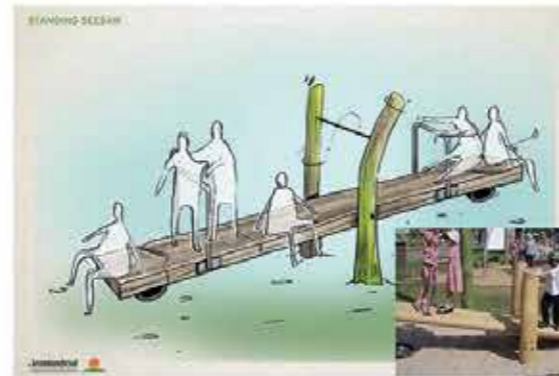
Kobelnest



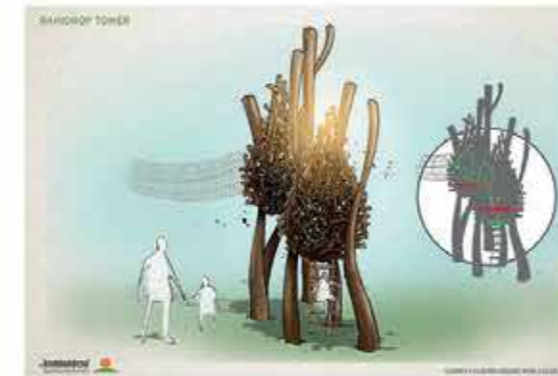
Forest Tower



Ping pong Table



Standing Seesaw



Raindrop Tower



Parcours

The play equipment is made from natural (debarked) timbers.

For reasons of durability Robinia is used for all structural timbers.

Nets and ropes are polypropylene wirecore.
The slide is stainless steel.

The table tennis table is concrete.

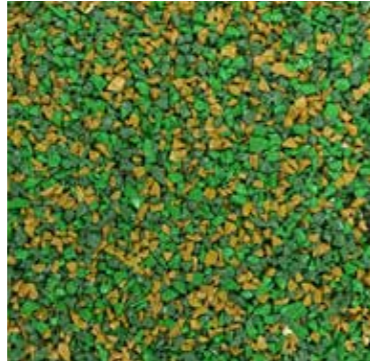
See overleaf for material palette images.

SCALE & APPEARANCE MATERIALS

FLOOR FINISH (REFER TO GA01 FOR SURFACING LEGEND)



Tarmac surface with amber aggregate to match main park path



Impact attenuating wetpour surface



Tigermulch

FENCE



Proposed boundary treatment to match existing: timber post and rail with dog mesh, continuous hedge planting, metal railing self-closing gates

PLAY STRUCTURE



Robinia posts (bark and sap wood removed)



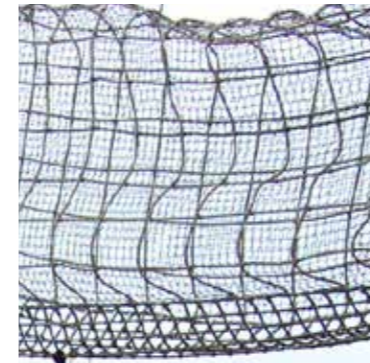
Robinia posts with stainless steel bolts and shoes



Stainless steel bolts



Stainless steel slide



Play net (Wirecore polypropylene net)



Play rope (Polypropylene)



Natural boulders



Robinia cladding



Hardwood bench

SCALE & APPEARANCE PLANTING

HEDGE PLANTING



Blackthorn



Hazelnut



Dog Rose



Hawthorn

To increase play value and provide seasonal interest and learning about nature we propose an 'edible hedge'.

The proposals are for a native 'edible' hedge, which will be maintained approximately at railing height.

The existing hedges are blackberries. These will be retained. As the line of hedging is interrupted we propose interspersing proposed flowering and fruiting species.

Hedging will be planted to embrace the new fencing and create a more natural entrance to the park.

SUDS PLANTING



Ramsons



Marsh marigold



Maiden grass



Iris

SUSTAINABILITY

SUSTAINABLE DRAINAGE

New sustainable drainage will be designed and implemented to prevent ponding as currently occasionally occurring in the sandpit.

MATERIALS AND CONSTRUCTION

The material specification prioritises materials from renewable sources, with low embodied energy, as well as recyclable and recycled materials.

PLANTING AND BIODIVERSITY

New low level structural planting, makes a positive contribution to increasing biodiversity (Policy 7.19, The London Plan). It includes bee and insect friendly flowering plants as well as a range of plants providing low key habitats for other species groups. Good horticultural practices will be followed, including peat-free composts, mulches, and soil conditioners.

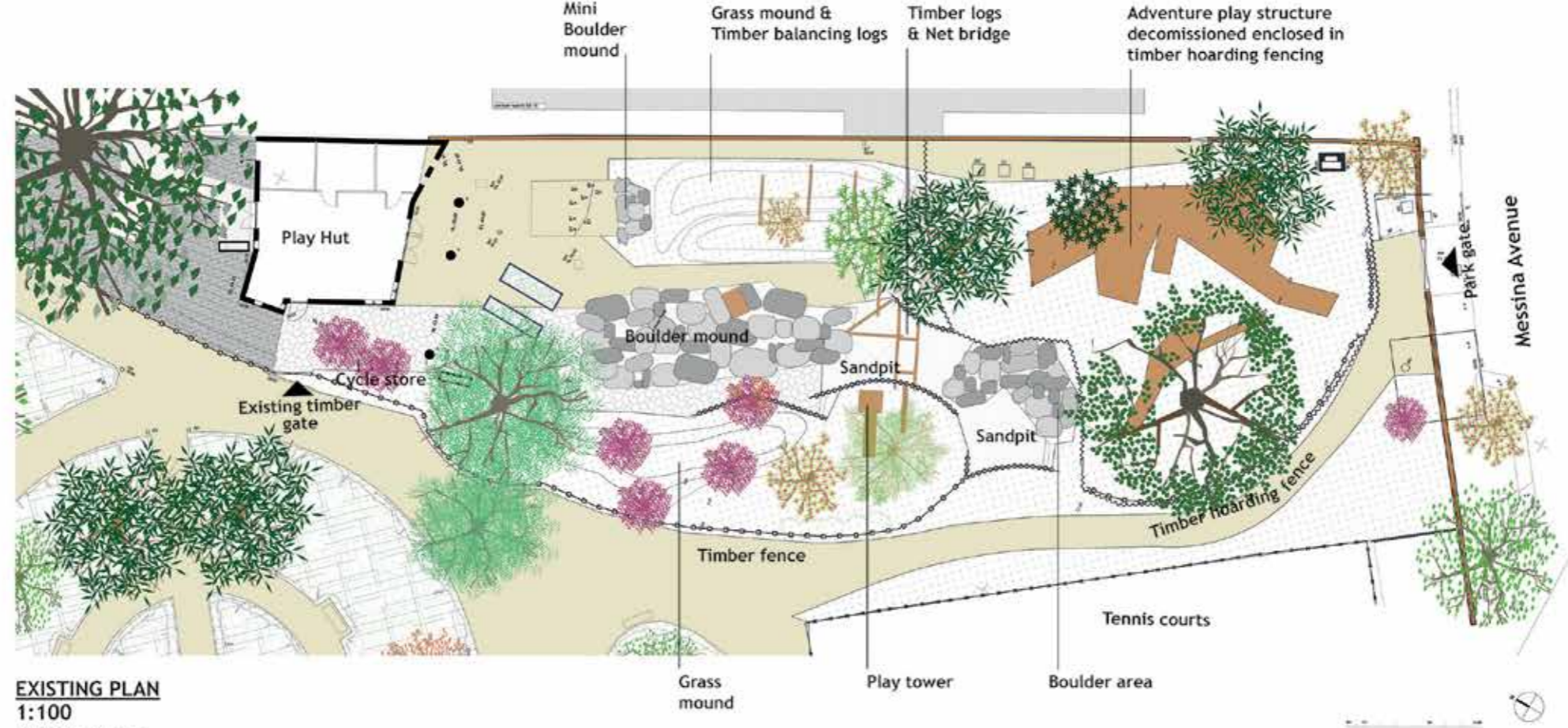
**APPENDIX A -
ENGAGEMENT BOARDS DETAIL DESIGN, 24TH SEPTEMBER 2018**

KILBURN GRANGE PARK PLAY - EXISTING

Engagement
24.09.2018

SURFACING

-  Tarmac
-  Turf
-  Crazy paving
-  Planting



EXISTING PLAN
1:100

PLAY FEATURES



Boulder mound



Timber fence 0.9m high



Timber hoarding fencing 2.5m high



Adventure play structure, decommissioned



Grass mound & Timber balancing logs



Timber logs, Net bridge & Play tower with sand pit



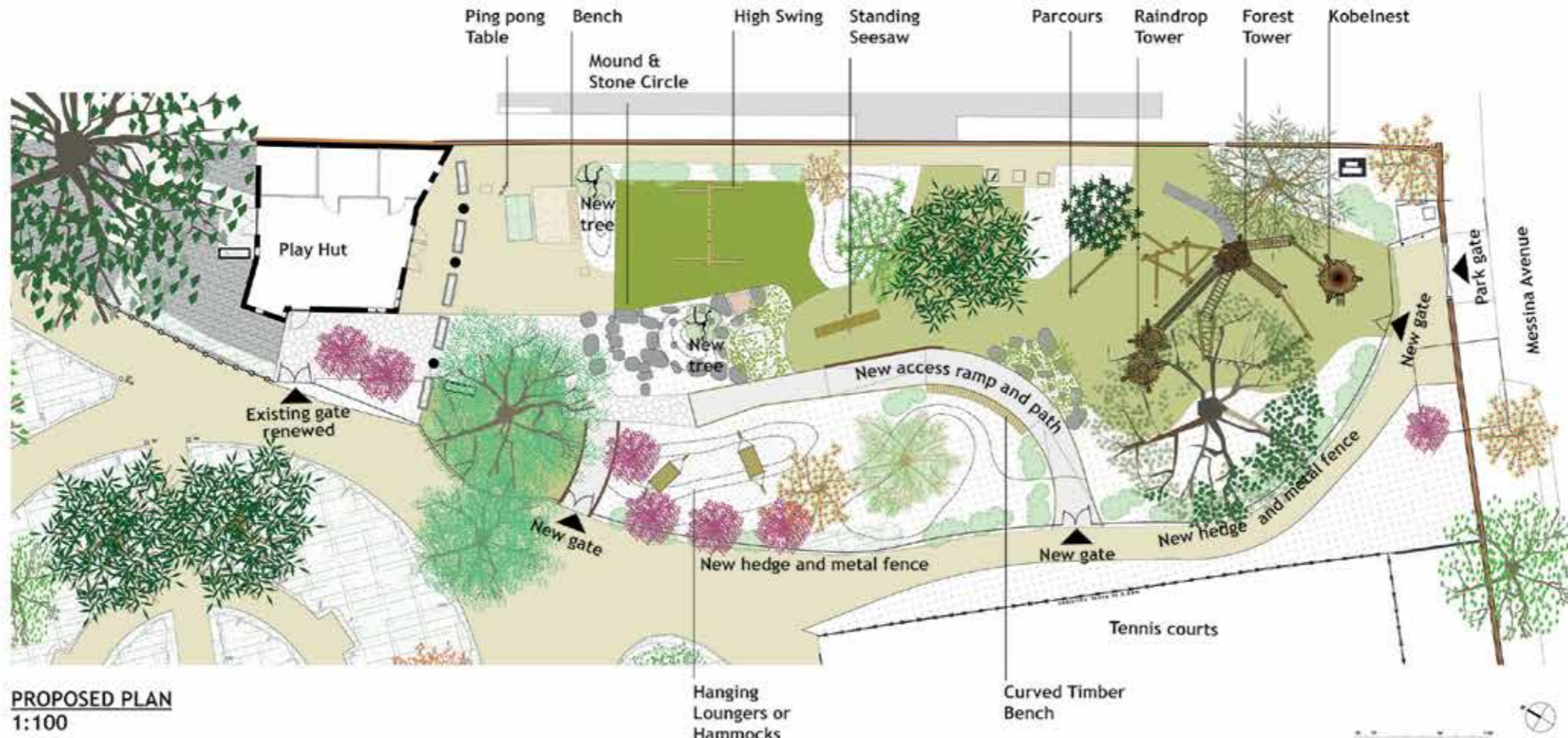
Grass mound



KILBURN GRANGE PARK PLAY - PROPOSED

Engagement
24.09.2018

SURFACING



PROPOSED PLAN
1:100

HEDGE PLANTING



SuDs PLANTING



SITE FURNITURE



LANDSCAPE ELEMENT

PLAY FEATURES



Hammocks



High Swing



Kobelnest



Forest Tower



Ping pong Table



Standing Seesaw



Raindrop Tower



Parcours

erectarchitecture. Camden

**APPENDIX B -
ENGAGEMENT REPORT 2017**