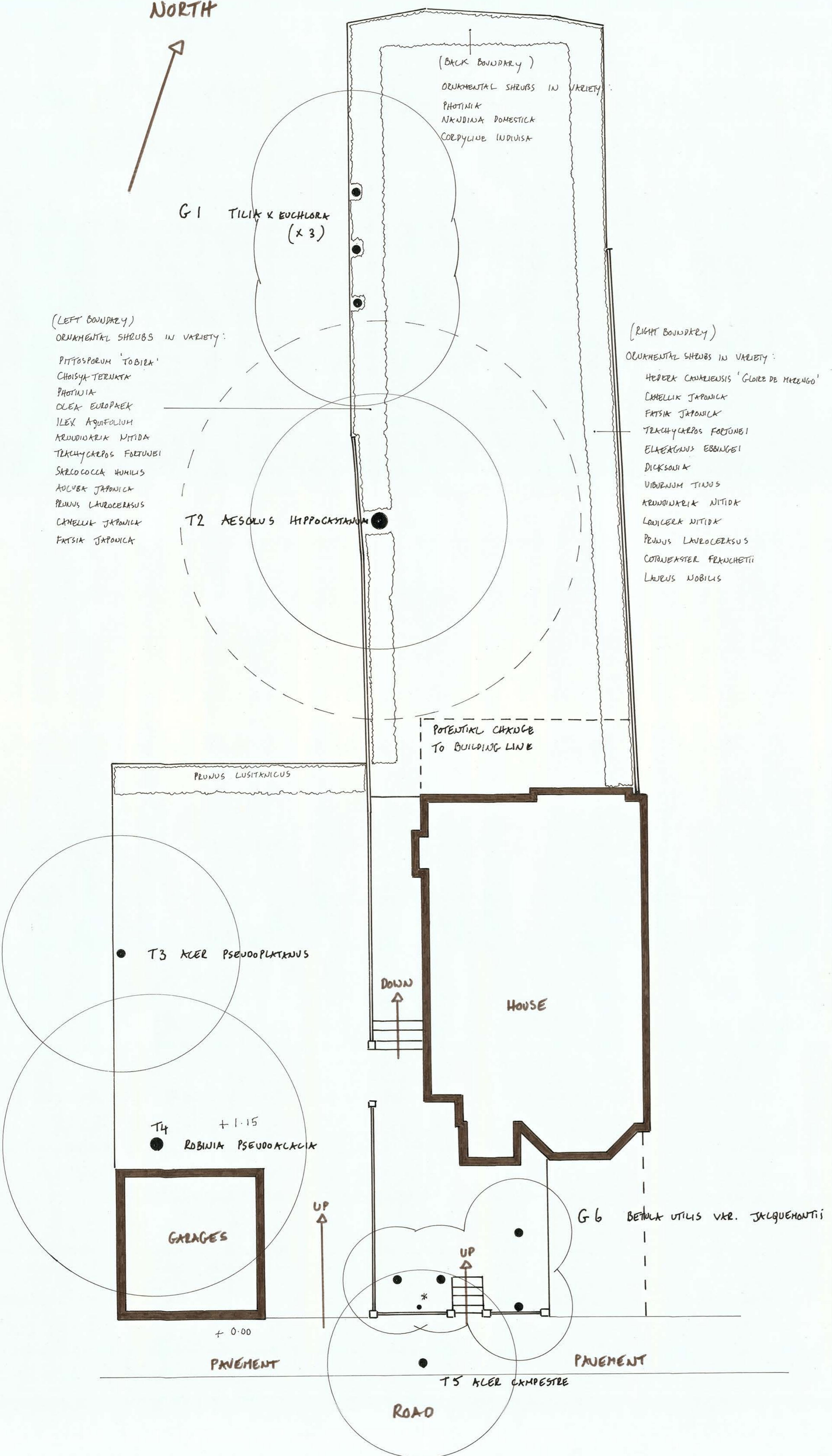


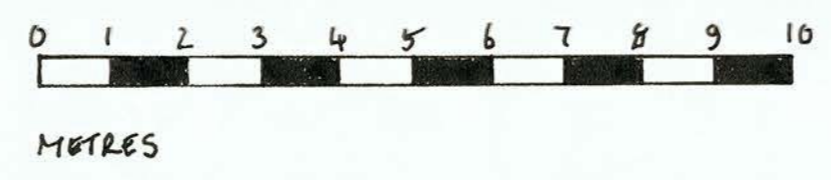
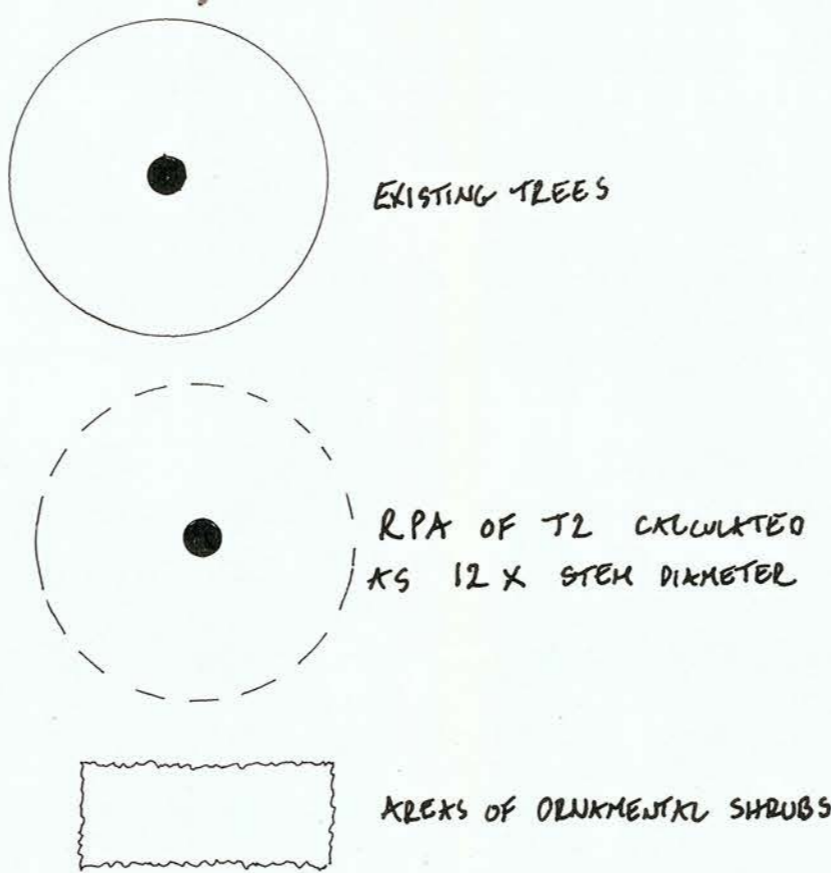
NORTH



TREE SURVEY SCHEDULE

SPECIES	HEIGHT	STEM DIAMETER	CANOPY	LOWEST BRANCH	STRUCTURAL CONDITION	PHYSIOLOGICAL CONDITION	PRELIMINARY MANAGEMENT RECOMMENDATIONS	ESTIMATED REMAINING CONTRIBUTION	AGE CLASS	CATEGORY GRADING
G1 TILIA X EUCHLOA (x 3)	20 M	0.45 AVERAGE	4 4 4 4 4 4 EXH TREE CROWNES HELD	2M	A GROUP OF 3 TREES UPRIGHT, VIGOROUS. ORIGINALLY POLLARDED AT 4M FROM GROUND. RECENTLY REDUCED 3-4 M. EXH TREE 3-STEMMED FROM ORIGINAL COPPING.	GOOD NO ARMHS NO SULKERS	REDUCE HEIGHT TO 16 M WHERE RECENTLY REDUCED	40 YRS +	MIDDLE-AGED	B1
T2 AESCULUS HIPPOCASTANUM	16 M	0.65	5 5 5 5 5 5	2M	ORIGINALLY POLLARDED AT 4M FROM GROUND. 12 STEMMED ABOVE THIS POINT. STEMS CROSSING, 1 DEAD, DEEP CRACK-LIKE SPLITTING ON SOME STEMS. 4 LARGE CAVITIES IN TRUNK WHERE LATERALS HAD BEEN REMOVED (35 KEYS, 45 DEEP) SPONGY INSIDE. SPONGY WOOD BENEATH BARK AT BASE. BLACK WEAVING EVIDENT.	LEFT WIND INFESTATION. TREE COMPLETELY DEFOLIATED ON DAY OF VISIT (25.09.2018). STEM ROT.	THIS TREE APPEARS TO BE SUFFERING TO DISEASE. A TREE SURVEY SHOULD CONFIRM THE PRESENCE OF STEM ROT, CRACKS, AND ASSESS THE SAFETY OF THE TREE AS IT IS A BORDERLINE CASE AS BEING UNSUITABLE FOR RETENTION. IN POOR SHAPE DUE TO UNSYMPATHETIC PAST MANAGEMENT, AND UNLIKELY TO SURVIVE IN THE SHORT TERM.	0-10 YRS	MATURE	U
T3 ACER PSEUDOPLATANUS	12 M	0.34	4.5 4.5 4.5 4.5 4.5 4.5	2.5 M	GOOD. VIGOROUS. WELL DEVELOPED EVEN CANOPY	GOOD	LIFT AND REDUCE LOWER BRANCHES TO FACILITATE PARKING	40 YRS +	MIDDLE-AGED	B1
T4 ROBINIA PSEUDOACACIA	12 M	0.55	6 6 6 6 6 6	1.5 M	POOR. EXTENSIVE DIE-BACK ON ALL BRANCHES ABOVE 3M FROM GROUND. THE TREE IS LEANING. VIGOROUS RE-GROWTH ON LOWER PORTIONS OF TRUNK (BELOW 3M). STAGNY WOOD AT BASE OF TRUNK, BARK CRACKING AWAY. NO EVIDENCE OF HEAVE, BUT ROOT SYSTEM HAS HAD TO ADAPT TO THE CRACKLES AND IS THUS RESTRICTED. THE TREE IS SUCKLING VIGOROUSLY AROUND THE HEAV.	POOR. BARKROT FUNGUS.	THE EXAGGERATED LEAN OF THIS TREE (45° DEGREE) IS A CONCERN AS IT IS GROWING AGAINST THE GARAGES, HAS RESTRICTED KNOCKING THEREFORE ON ONE SIDE, AND SHOULD BE CONSIDERED FOR REMOVAL, OR AT THE LEAST HAVE DEAD WOOD REMOVED TO AVOID FALLING BRANCHES ONTO PUBLIC ACCESS AREA (THE PAVEMENT). DISEASE IS SEVERELY RESTRICTING THIS TREE'S ABILITY TO SURVIVE IN THE SHORT TERM	0-10 YRS	MATURE	U
T5 ACER CAMPESTRE (STREET TREE ON PUBLIC ACCESS ADJACENT BUILDING SITE).	9 M	0.19	3.5 3.5 3.5 3.5 3.5 3.5	2 M	GOOD. VIGOROUS. WELL DEVELOPED EVEN CANOPY	GOOD	THE TREES MAKING UP G6 WILL EVENTUALLY THREATEN THIS TREE. SEE RECOMMENDATION FOR G6	20-40 YRS	YOUNG	B1
G6 BETULA UTILIS VXR. JACQUEMONTII (x 5)	8 M	AVERAGE 0.14	2 2 2 2 2 2 EXH TREE CROWNES HELD	3M	A GROUP OF 5 TREES. GOOD. VIGOROUS. ONE TREE IS STUNTED (MARKED) WITH 0.09 DIA STEM AND SHOULD BE REMOVED. 2 OF THE GROUP ARE TWIN-STEMMED. LOWER BRANCHES HAVE BEEN BRUSHED.	GOOD.	THIN AND REDUCE. WITH THE STING UP OF THE TREES THEY ARE CONGESTED IN THE CROWN AND BARK AT THE BOTTOM. REMOVE STUNTED TREE MARKED * AS IT RESTRICTS T5	20-40 YRS	YOUNG	B1

KEY



SITE VISIT AND METHODOLOGY

THE SITE WAS VISITED ON 25.09.2018. A PLAN OF THE SITE AND HOUSE WAS PROVIDED BY MW ARCHITECTS. TREES WERE ACCURATELY PLOTTED AND NUMBERED, AND NOTES MADE WHICH APPEAR IN THE TREE SURVEY SCHEDULE. DETAILS OF ALL EXISTING TREES WERE NOTED AND GIVEN A CATEGORY GRADING AS OUTLINED IN BS 5837:2012. THE ROOT PROTECTION AREA OF T2 WAS CALCULATED, BEING PLOTTED AS A CIRCLE WITH A RADIUS 12 TIMES THE STEM DIAMETER.

NOTES WERE ALSO MADE OF THE ORNAMENTAL SHRUBS PRESENT IN THE GARDEN AND THEY ARE LISTED ON PLAN.

FOLLOWING THE VISIT AN ARBORICULTURAL IMPACT ASSESSMENT WAS PREPARED AND IS DOCUMENT 613/2, WHICH ALSO INCLUDES AN ARBORICULTURAL METHOD STATEMENT AND DRAFT TREE PROTECTION PLAN

TREE SURVEY AT
 14 PRINCE ARTHUR ROAD NW3
 SCALE 1:100 @ A1
 DWG NO 613/1
 DATE SEPTEMBER 2018

PREPARED FOR DIANA MILNER GARDEN DESIGN
 BY: MICHAEL RUDGE GARDEN CONSULTANT
 BA HONS (DURHAM) POSTGRAD. DIP. LAND USE (DARTFORD)