

Wayleave / Permissions Pack Natwest & RBS

Site: RBS London Holborn, WC1V 6PQ

Overview of Request

This document covers a break down of the BT Delivery of cabling and hardware into a Natwest/RBS Branches that have listed buildings / permissions requirements applying to them.

Summary of Work

BT Engineering Teams and RBS 3rd Party Suppliers will be attending site within the branches and installing new fibre and copper cabling to provide connections to new BT Circuits and Cisco Wireless Access Points (WiFi).

Where possible BT & RBS 3rd Party Suppliers will utilise existing cable management containment within the branch sites to install the new cabling. Diagrams/Plans of planned cable runs for the relevant site are contained within this document along with relevant, supporting photo's.

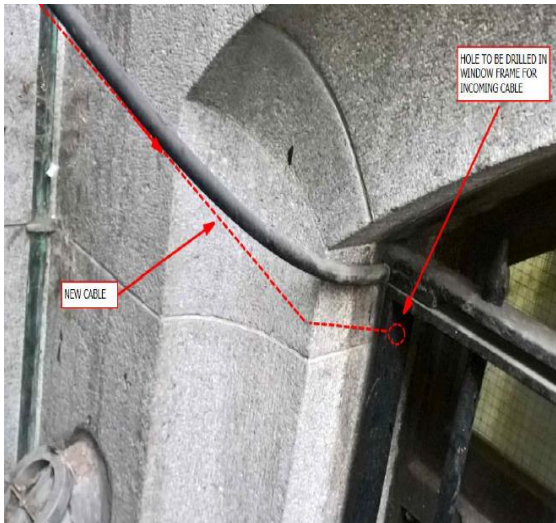
New Cisco Wireless Access Points will be installed within the branch as part of this delivery; these devices provide access to wireless internet access within the site. This document provides diagrams of the new Access Points (referenced as "AP's") locations within the branches and photo's of the proposed installation position

The cable routes described herein with reference to the Wi-Fi access points are assumed and are based on non-intrusive visual inspection of the environment (e.g. no lifting of ceiling \ floor tiles took place in ascertaining the positioning of the access points and the associated cable routes). RBS branches have a managed cable system installed above the ceilings and as such cable routes will predominately be contained within the cable management system.

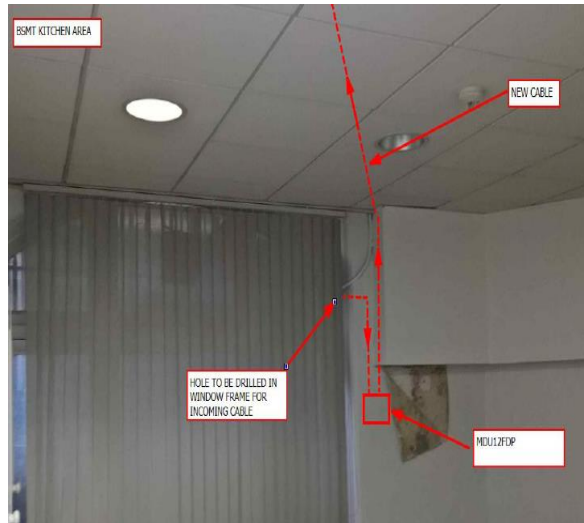
Fibre Summary

- Duct entry is in the basement. From duct entry cable will enter Basement kitchen area, hole need to be drilled in window frame for the incoming cable. Kindly ref pic 1 and pic 2
- There is a requirement to install a gas seal unit as indicated by the drawing in Pic2 which shows it will be installed on the wall. These are attached with screws to the wall and can be removed if required.
- From Gas seal unit cable will move up toward false ceiling . From there cable will move to comms rooms above the false ceiling to comms cabinet. Kindly ref pic 2 to pic 5

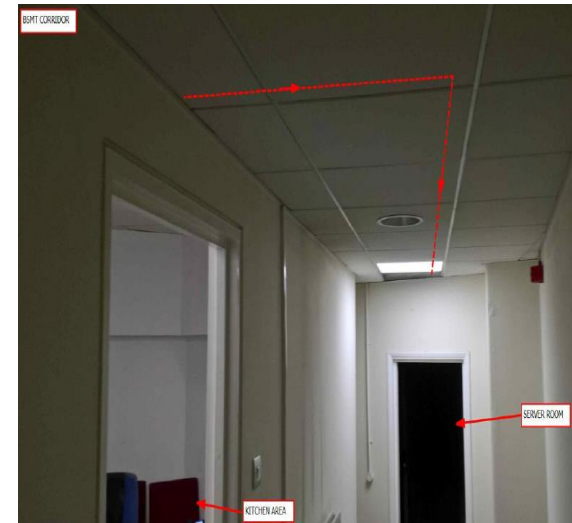
Fibre Pictures



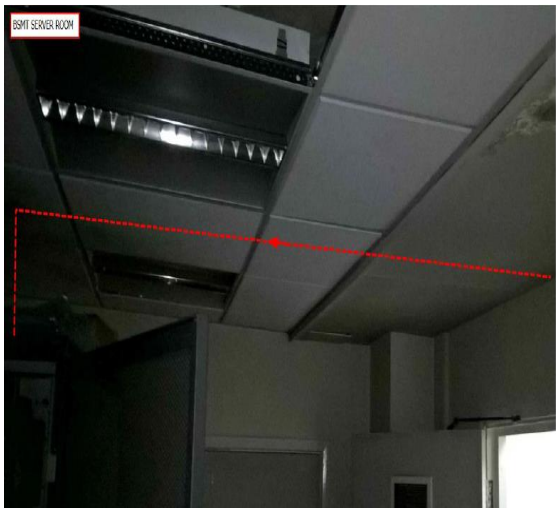
Pic 1



Pic 2



Pic 3



Pic 4



Pic 5