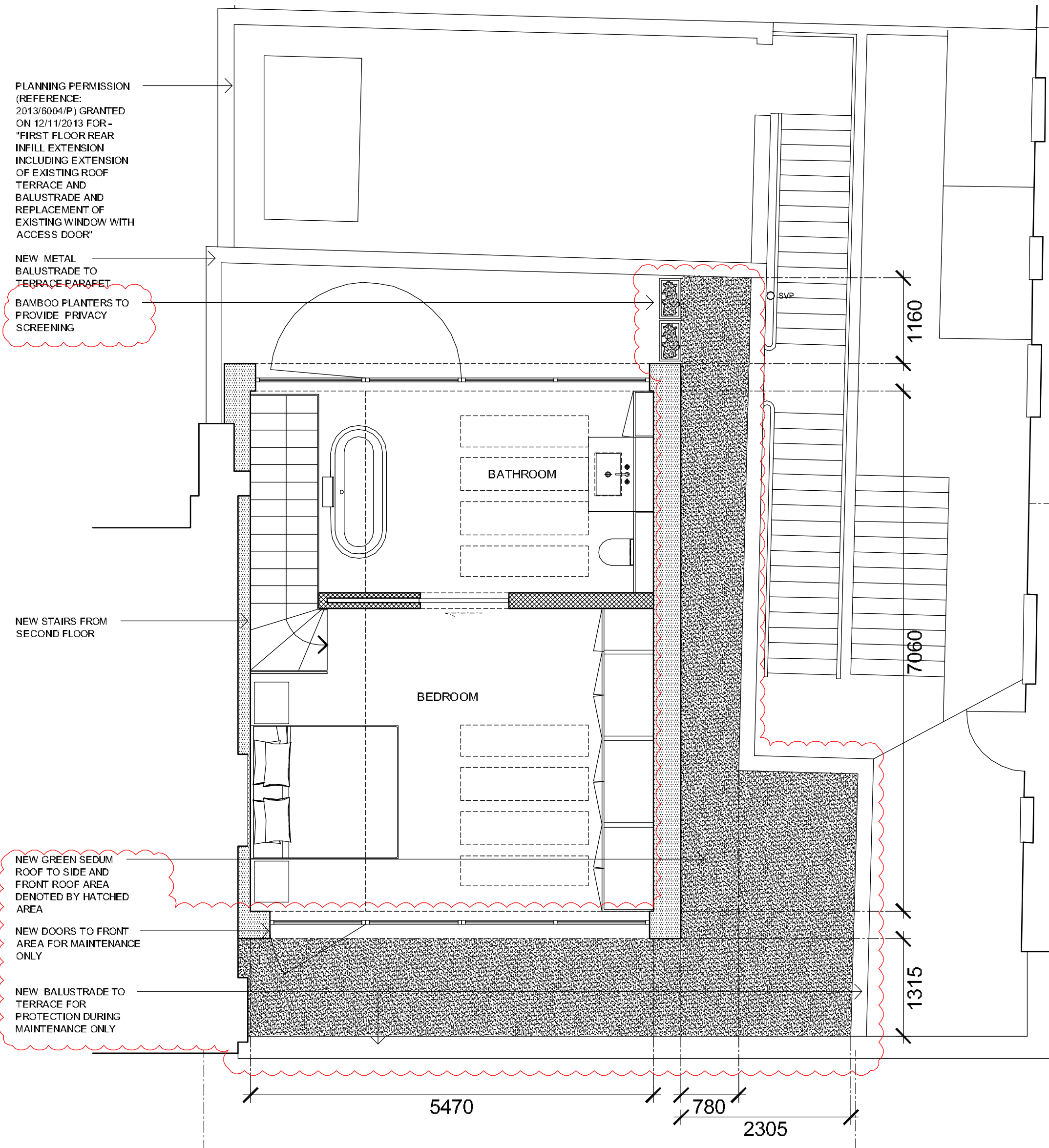
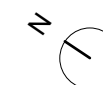
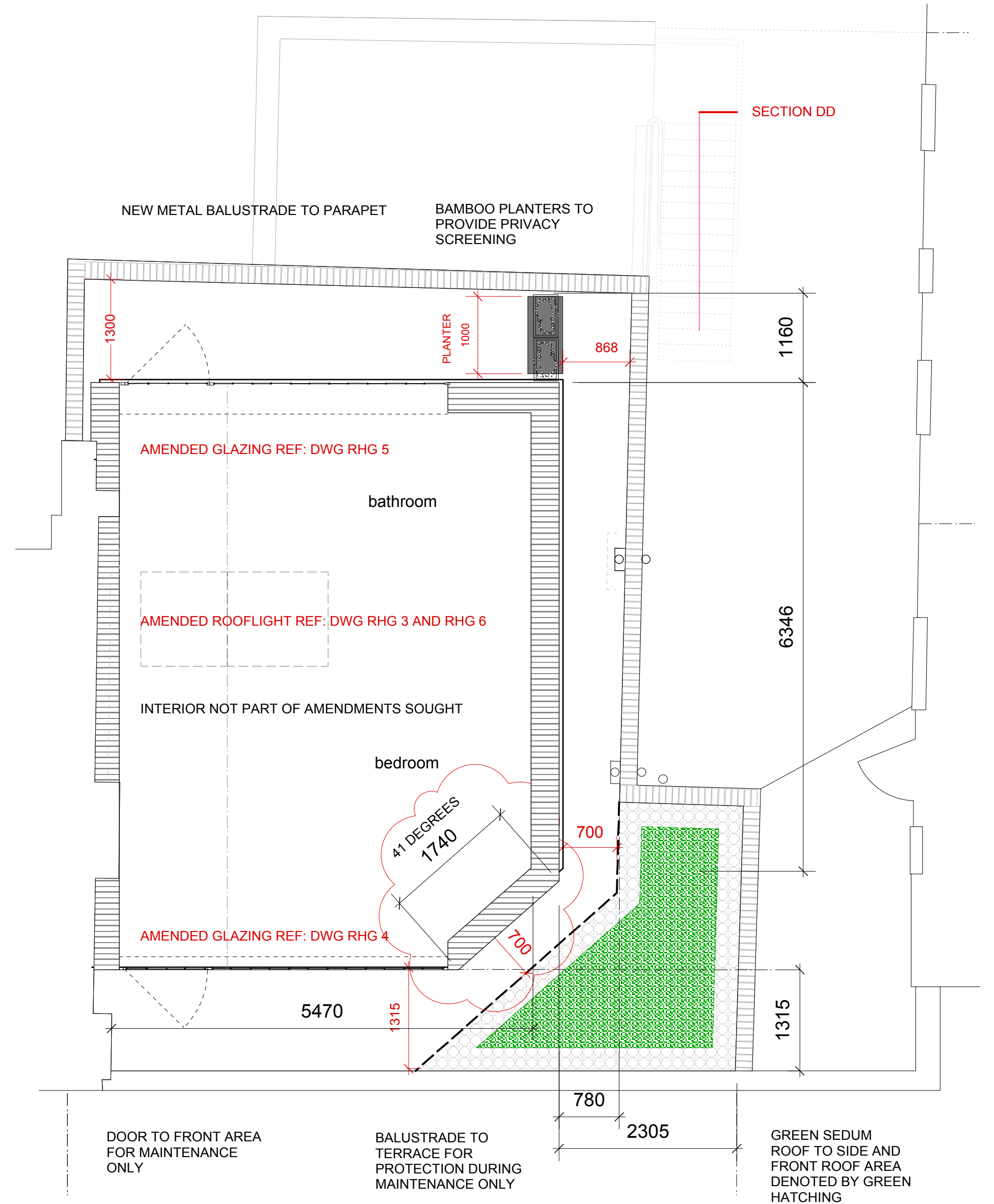
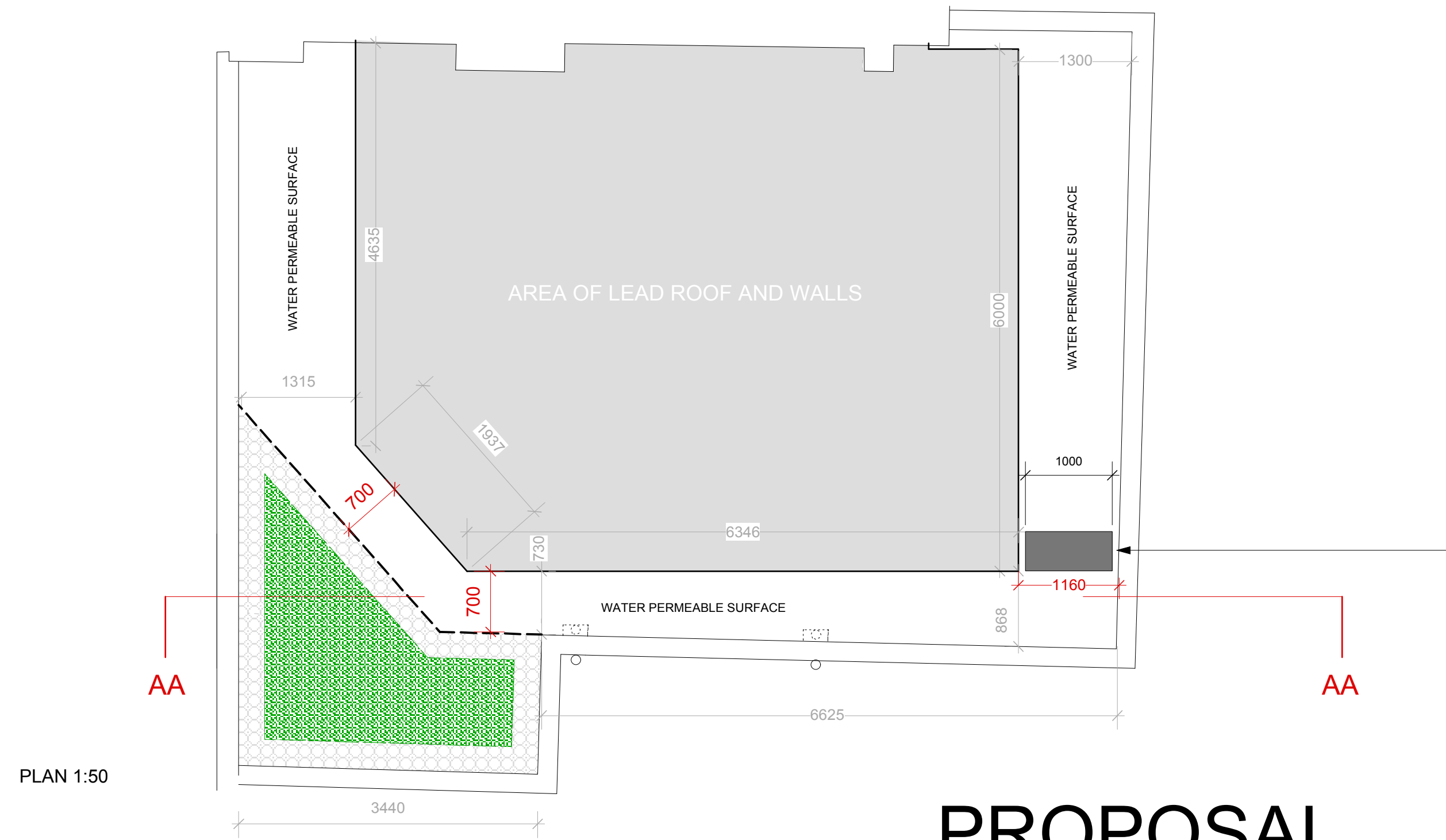


THIRD FLOOR PLAN CURRENT CONSENT DRAWING



THIRD FLOOR PLAN AMENDED PROPOSAL





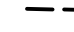




PLAN 1:50

SPECIFICATION

SEDUM ROOF SYSTEM
<https://www.sky-garden.co.uk>

-  Sedum blanket: approx 30mm 8-12 species
-  Sedum substrate: approx 50mm free draining organic medium
-  Drainage layer: HPDE 20mm cuspated board 7lts/sqm water storage
-  85-100mm deep - 300mm wide riverstone border
-  4.7m linear edging: 100mm deep aluminium as per suppliers details

Note minimum 700mm run-off exclusion zone from lead roof to ensure sedum exposure to lead is minimal to ensure viability

PLANTER: 100 X 45 X 45cm BLACK GALVANIZED
<https://www.primrose.co.uk/100cm-zinc-galvanised-k>
(Note: 100cm max width planter with coping and low level ventilation to lead roof)

BAMBOO:
Requiring a container at least 45cm (18in) across and deep in loam based potting compost such as John Innes No 3, planted with controlled release fertiliser pellets and water retaining gel in the compost. Frequent watering during summer, with regular liquid feed, reduce watering and stop feeding in winter. In very cold weather, container wrapped with bubblewrap. Divide the bamboo every couple of years using a saw to cut through the rootball, retaining the younger rhizomes and canes.

Species: ruscus-leaved bamboo such as *Bambusa shibataea* 'Kumasaca' *Shibataea* are low-growing evergreen bamboos, very slowly spread to form clumps of vegetation with slightly sinuous, slender canes and lance-shaped leaves. *S. kumasaca* is a dwarf, compact bamboo, forming dense, leafy clumps with pale green canes to 1.5m in height.

PROPOSAL

SECTION AA 1:20

