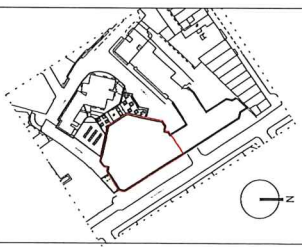


Do not scale. All dimensions to be confirmed on site. Copyright of Orms designs is retained in full and in part to be reproduced without permission.
 Any files



CON PLAN REFERRED TO THIS DRAWING

Name: _____

REV.	DATE	DESCRIPTION	ISSUED FOR
001	15.07.18	Issued for Planning	
002	02.03.18	Issued for Planning	
003	02.03.18	Issued for Planning	
004	02.03.18	Issued for Planning	

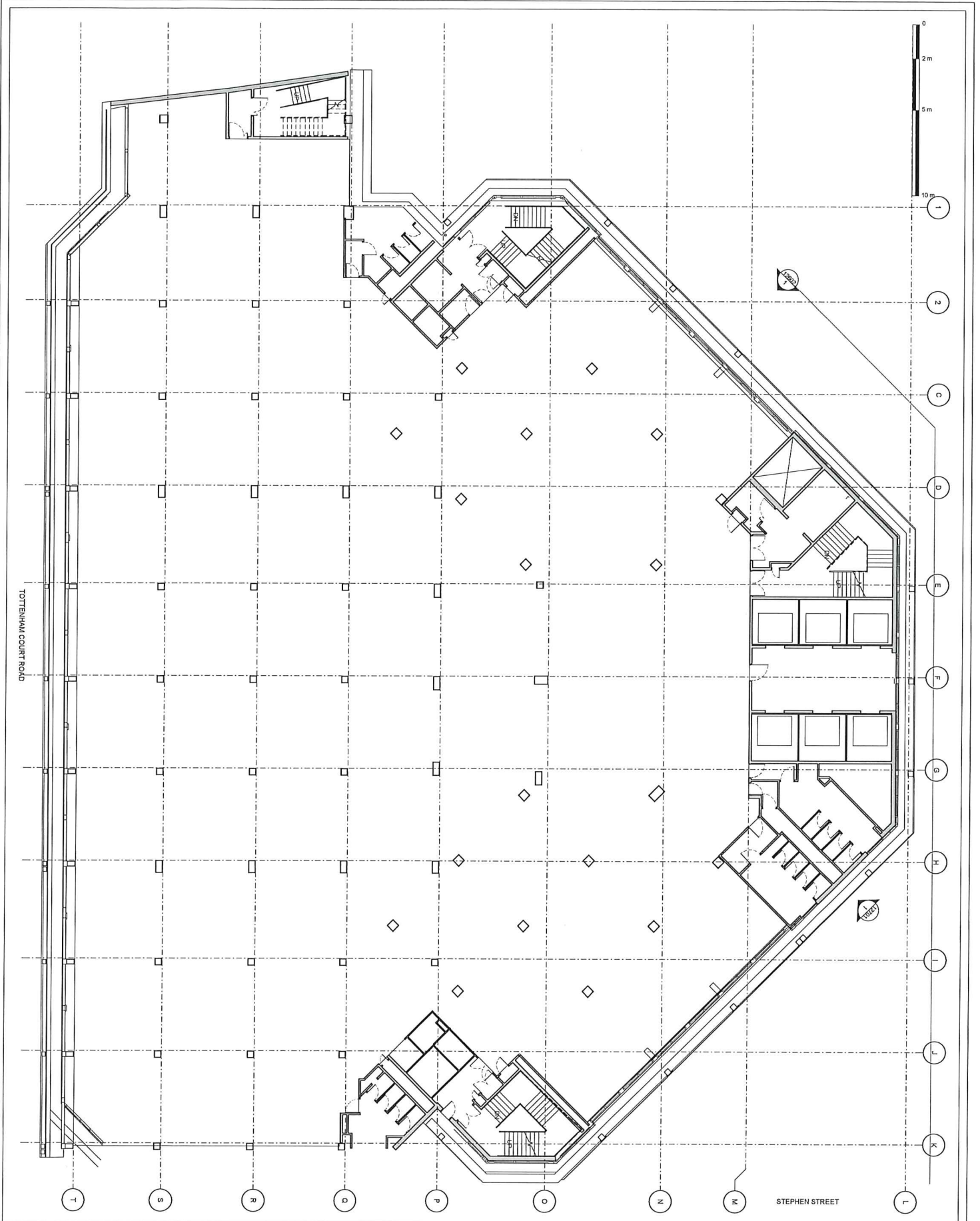
Project: P-PLANNING

Orms

Orms Ltd
 100 Tottenham Court Road
 London W1P 0LJ
 Tel: 020 7462 2000
 Fax: 020 7462 2001
 www.orms.co.uk

Project: Stephen Street Second Floor
 Drawing title: Existing Second Floor Plan
 Drawing type: Planning

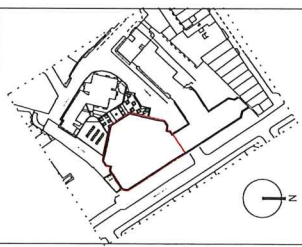
Scale: As indicated
 Drawing number: 2018/0001/002/001
 SSS-ORM-00-02-DR-A-12102
 Project: 2188
 Rev: P02



TOTTENHAM COURT ROAD

STEPHEN STREET

This document is a preliminary design and is not to be used for construction. It is the property of Orms and is not to be reproduced without permission.
 21/18



Orms (incorporated in the UK)

Name: _____

Rev.	Date	Description
P01	31.05.18	Issued for Planning
P02	02.03.18	Issued for Planning

Project: P1-PLANNING

Orms

1, Cherry Hill
 100, High Street
 London, E14 3DF
 020 7333 8333
 www.orms.co.uk

Project: Stephen Steel Second Floor

Drawn: Proposed Second Floor Plan

Checked: Planning

As indicated
 21/18
 Project No: 2018-001-02-DR-A-12202
 Rev: P02