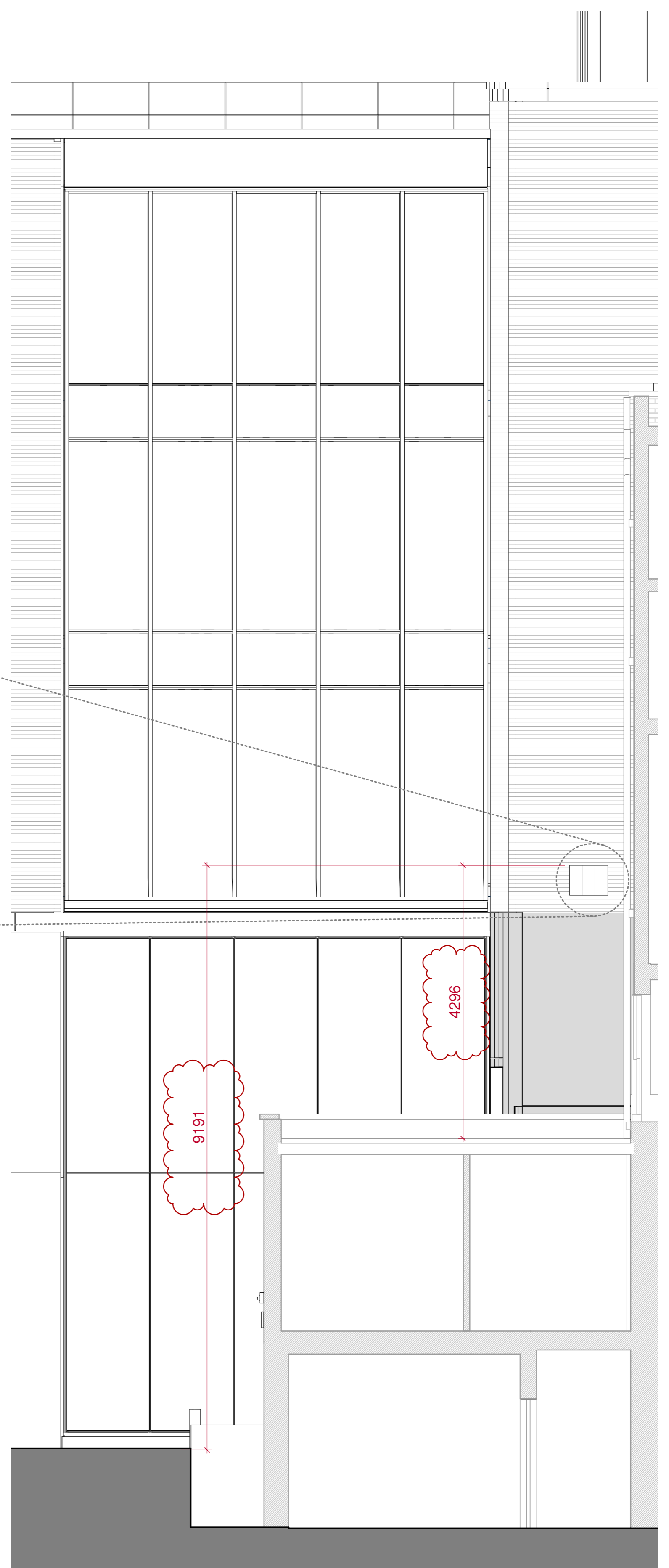
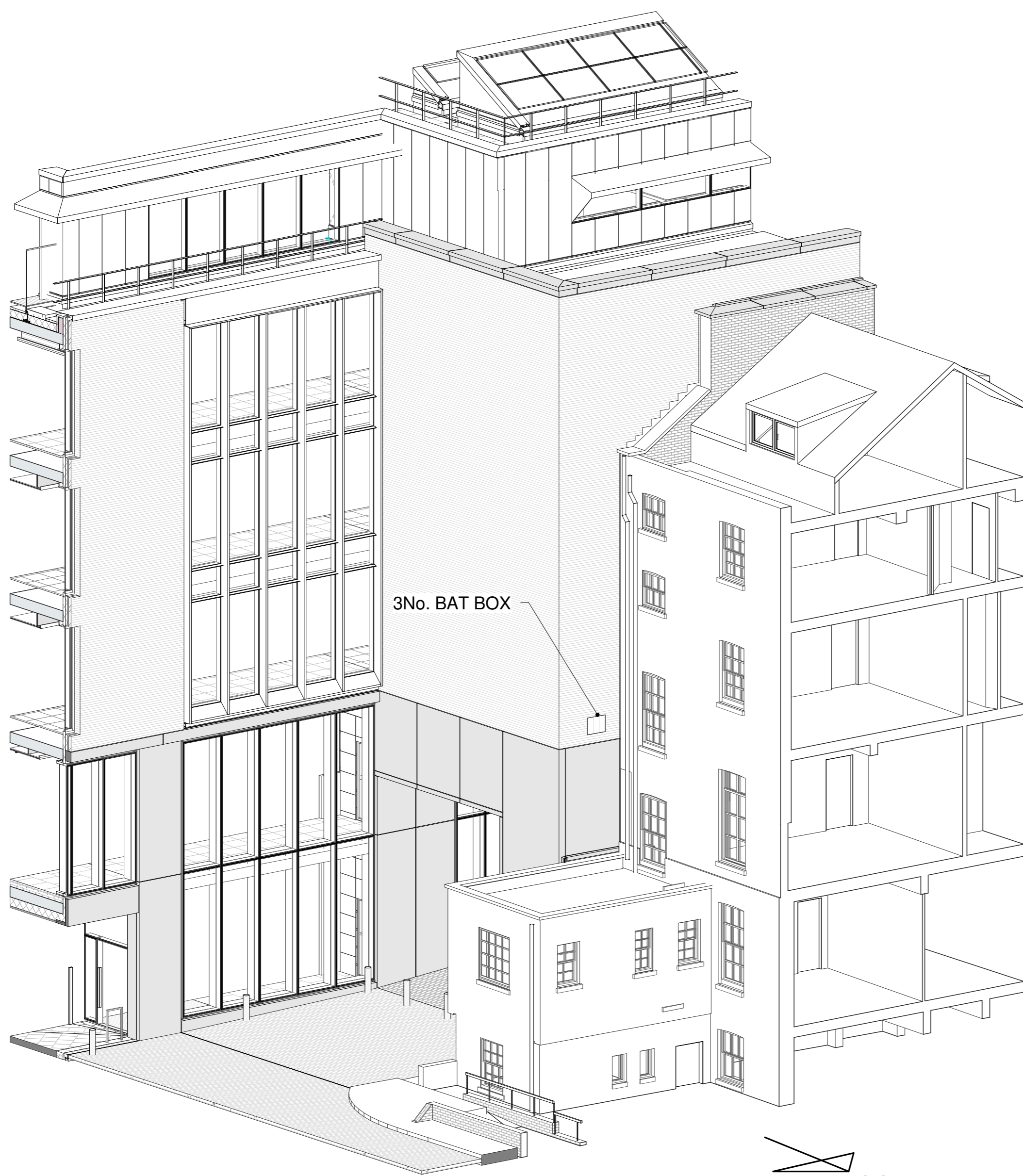


DETAIL LOCATION FOR BAT TUBE.  
NOTE SECTION TAKEN PARALLEL WITH WALL

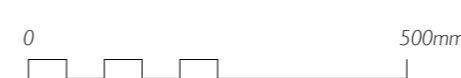


SECTION A-A SHOWING WESTERN SIDE OF SOUTHERN ELEVATION TO No. 26 GABLE  
REFER TO KEY FOR LOCATION  
NOTE SECTION TAKEN PARALLEL WITH WALL



3D VIEW OF SOUTH ELEVATION  
REFER TO KEY FOR LOCATION

Rev.	Date	Description
P01	29/05/18	First Issue
P02	26/07/18	Height from adjacent roof and general ground level indicated



<b>Nicholas Hare Architects</b> 3 Barnsbury Square London N1 1JL telephone +44 (0)20 7619 1670 fax +44 (0)20 7619 1671 e-mail 689ucl@nicholashare.co.uk		project UCL New Student Centre for University College London title Bat Box Locations (689)
status Planning To be read in conjunction with all relevant information - do not scale	scale 1:10	size A1
drawing number 031-51-0100-DRA-PL503-ZZ		rev. P02

