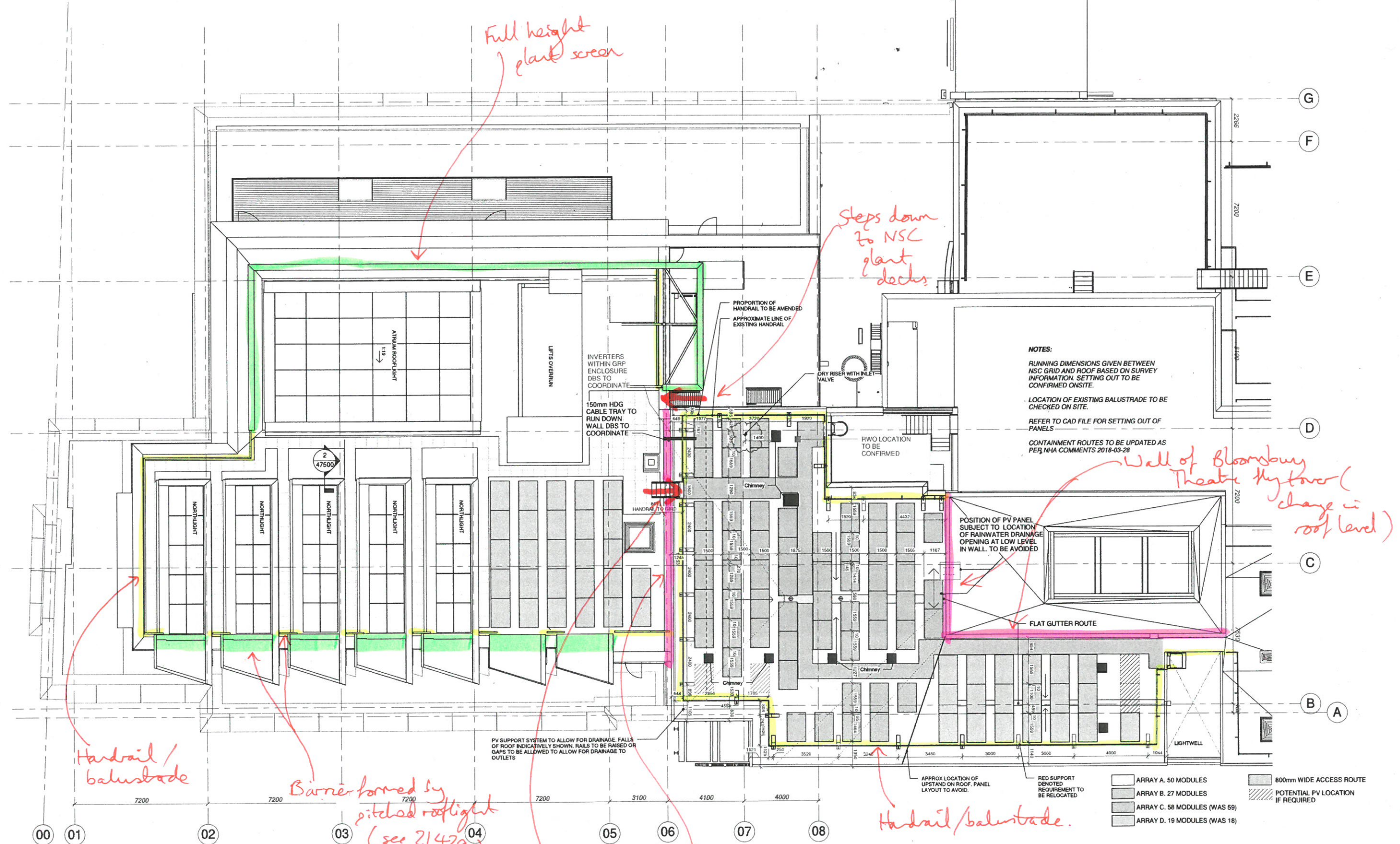


180730 - Edge protection.
UCL New Student Centre.



Handrail/balustrade

Barrier formed by pitched rooflight (see 21429)

Full height plank screen

Steps down to NSC plank decks

Wall of Bloomsbury Theatre Hub tower (change in roof level)

Handrail/balustrade.

Steps up from NSC roof to BT roof

Change in roof level

Rev	Date	Description
P01	12/04/18	First issue
P02	09/05/18	Updated location following dry riser location confirmation

Nicholas Hare Architects 3 Barnsbury Square London N1 1E		project UCL New Student Centre University College London Roof Level PV layout
telephone +44 (0)20 7619 1670 fax +44 (0)20 7619 1671 email nha@nicholshare.co.uk	(689)	sheet Coordination To be read in conjunction with all other information. © NHA 2018
scale 1:100	date A1	drawing number 031-51-0100-DR-A-47601-RF