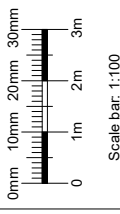
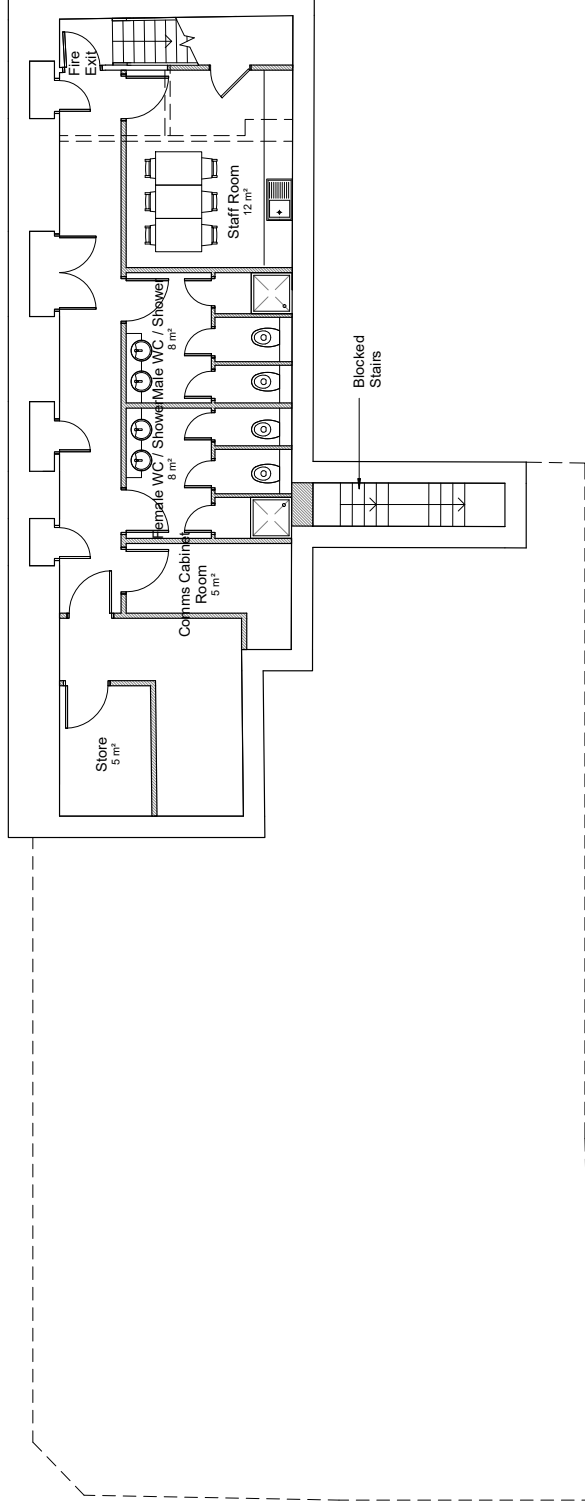


Notes

1. New Aluminium power coated (colour grey) Shop Front
2. New Aluminium power coated (colour grey) windows
3. Aluminium projecting feature (colour grey)
4. Composite Metal Cladding (colour grey)
5. Grey Render
6. Composite Metal Cladding to Fascia (colour Grey)
7. Metal hand rail mechanically fixed to inner side of parapet wall.
8. Lift Overrun
9. A.O.V (Automatic Opening Vent)

General Notes

1. Lift /8 persons / 630kg
Car: 1100x1400
Shaft: 2000x1750
2. All Existing Windows to be replaced with new windows
3. Ground floor layout is only indicative.



No scaled dimensions to be taken from this drawings. All dimensions to be site checked.

Rev	Description	Drawn by	Date

CG ARCHITECTS
221 East Street, Broomfield, Essex, SSG1 5DS
Tel: 020 8446 5100 Fax: 020 8446 5170

Client:
Labtech Investments limited
Ltd

Site:
Camden Lock Hotel
89 Chalk Farm Road
London NW1 8AR

Title:
Basement Plan as Proposed

Scale:	Drawn:	Checked:
As indicated (@ A3)	SH	CG
Date:	September 2018	
DWG No	REV	#
1263/20		