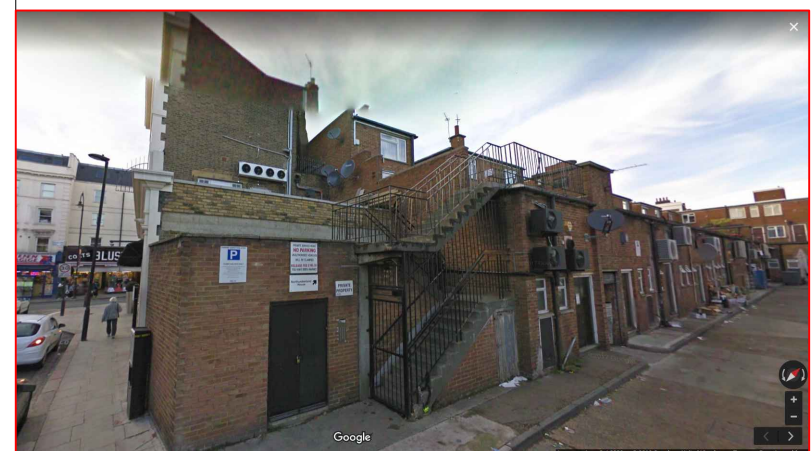
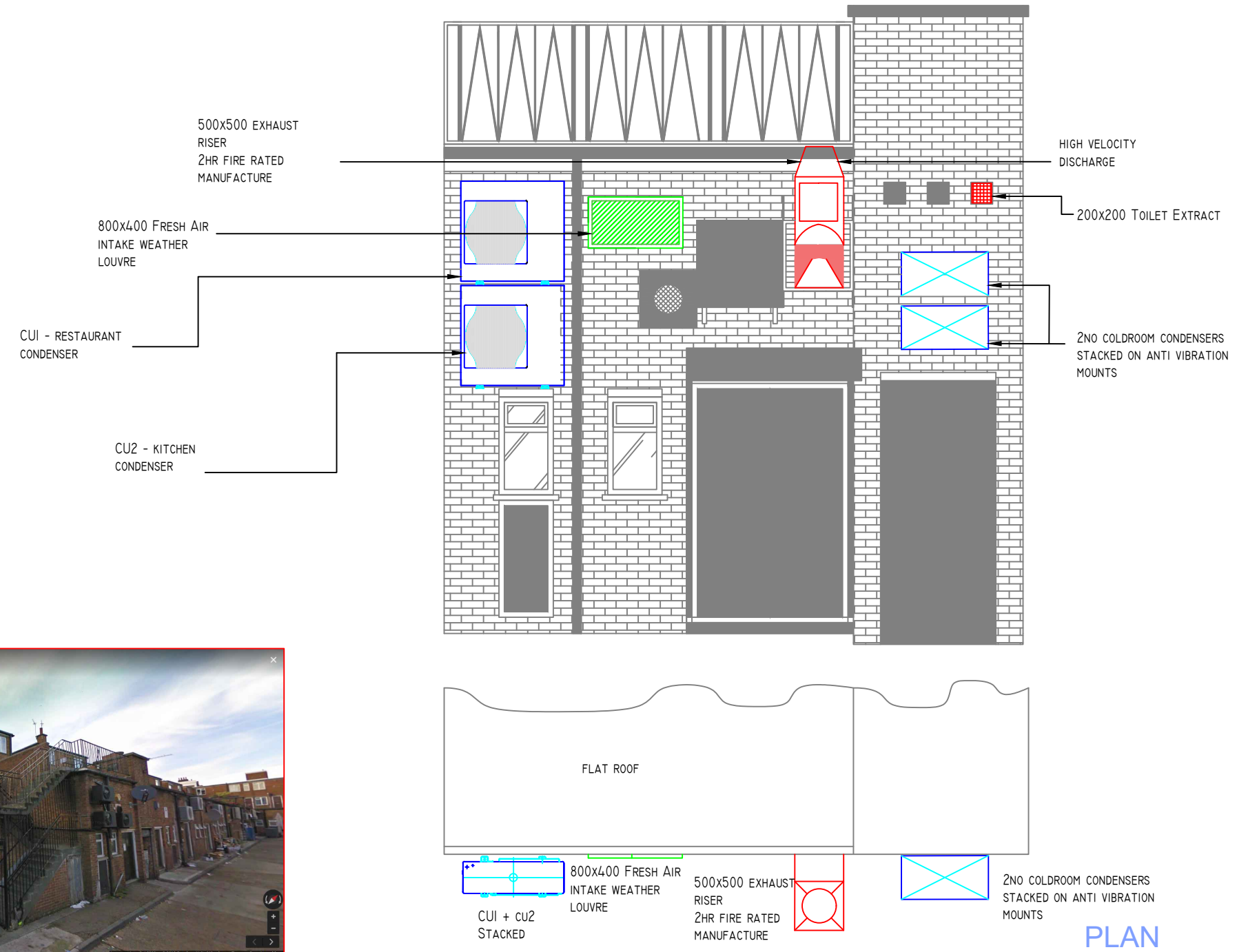


FOR THIS DRAWING WE CLAIM LEGAL PROTECTION REGARDING COPYRIGHTS, COMMERCIAL COMPETITION AND INDUSTRIAL GUARANTEE. THIS DRAWING IS ONLY TO BE USED FOR THE PURPOSE FOR WHICH IT IS SUPPLIED AND WITHOUT OUR CONSENT IT MUST NEITHER BE COPIED OR MADE ACCESSIBLE TO ANY THIRD PARTY.

REVISIONS

ADDED TOILET EXTRACT. ALSO ADDED A FLAT ROOF PLAN



INDICATIVE ELEVATION PLAN

EQUIPMENT LIST

**EF1 - KITCHEN EXTRACT FAN**  
 ELTA COMPACT POWER PLUS MODEL SPP500/4-3  
 ELTA MOUNTING FEET - 2 X 060B-500  
 ELTA FLEXIBLE CONNECTIONS C/W BANDING CLIPS - 2 X 050-0550-MAN  
 ELTA MATCHING FLANGES - 2 X 061B-0500  
 ELTA ANTI-VIBRATION MOUNTS - 4 X 52-52B  
 ELTA INVERTER CONTROLLER  
 SPP500/4-3 500MM LONG 69KG  
 NOISE - 62dBa @3M

**SF1 - KITCHEN SUPPLY FAN**  
 ELTA COMPACT POWER PLUS MODEL SPP450/4-3  
 ELTA MOUNTING FEET - 2 X 060B-450  
 ELTA FLEXIBLE CONNECTIONS C/W BANDING CLIPS - 2 X 050-0550-MAN  
 ELTA MATCHING FLANGES - 2 X 061B-0450  
 ELTA ANTI-VIBRATION MOUNTS - 4 X 52-52B  
 ELTA INVERTER CONTROLLER  
 SPP450/4-3 500MM LONG 48KG  
 NOISE - 58dBa @3M

**UV01 - UV0-1000 PURIFIED AIR ULTRA VIOLET UNIT (2NO STACKED)**  
 DIMS: 476WIDE X 1563DEEP X 350HIGH - 700HIGH TOTAL  
 WEIGHT: 50KG EACH - 100KG TOTAL  
 DUCT CONNECTION: Ø150  
 AIRFLOW: 1500L/S (70% CAPACITY)  
 ELEC SUPPLY: 240V, 1PH, 50HZ, 6AMP

**CUI RESTAURANT**  
 MITSUBISHI PUHZ-IRP7IVKA  
 950MMx330MM+30x943MM  
 67KG  
 16 AMP  
 1PH 4 INTERCONNECTING CORE CABLE  
 48 DBA

**CU2 KITCHEN**  
 MITSUBISHI PUHZ-140YHA  
 950MMx330MM+30x1338MM  
 131KG  
 16 AMP 3PHASE  
 4 CORE CABLE - INTERCONNECTING  
 52 DBA

**CR1- COLD ROOM CONDENSER**  
 ROOM 1 - 882X427X427 78KG 61dBa

**CR2- COLD ROOM CONDENSER**  
 ROOM 2 - 882X427X390 43KG 60dBa

Kentish Town, London

CLIENT: **TAFS FOODS**

DRAWING: **HVAC GA**  
**Proposed Arrangement**  
**'Planning Only'**

SCALE: **1:100@A3** DRAWN: *S.Lewis* DATE: **11/09/2018**

JOB No: **80858** CHECKED: DATE:

DRAWING No: **80858 / M / 001 REVISION B**