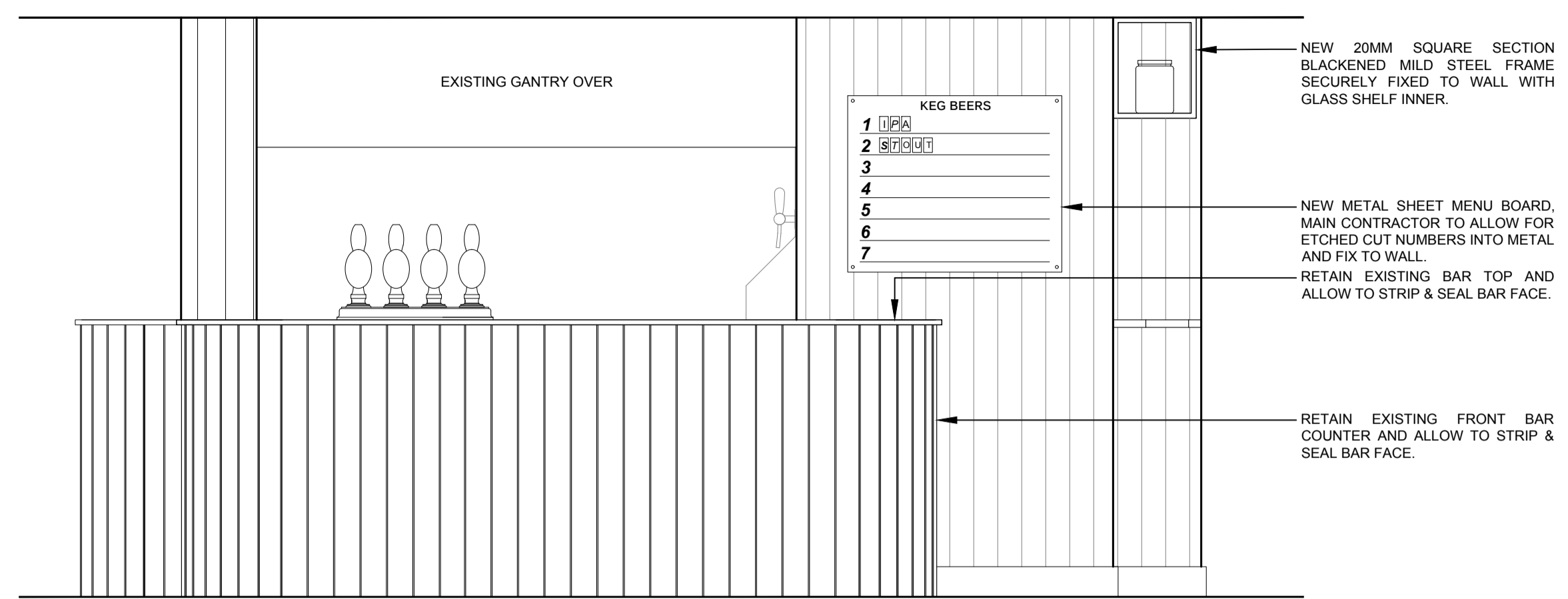
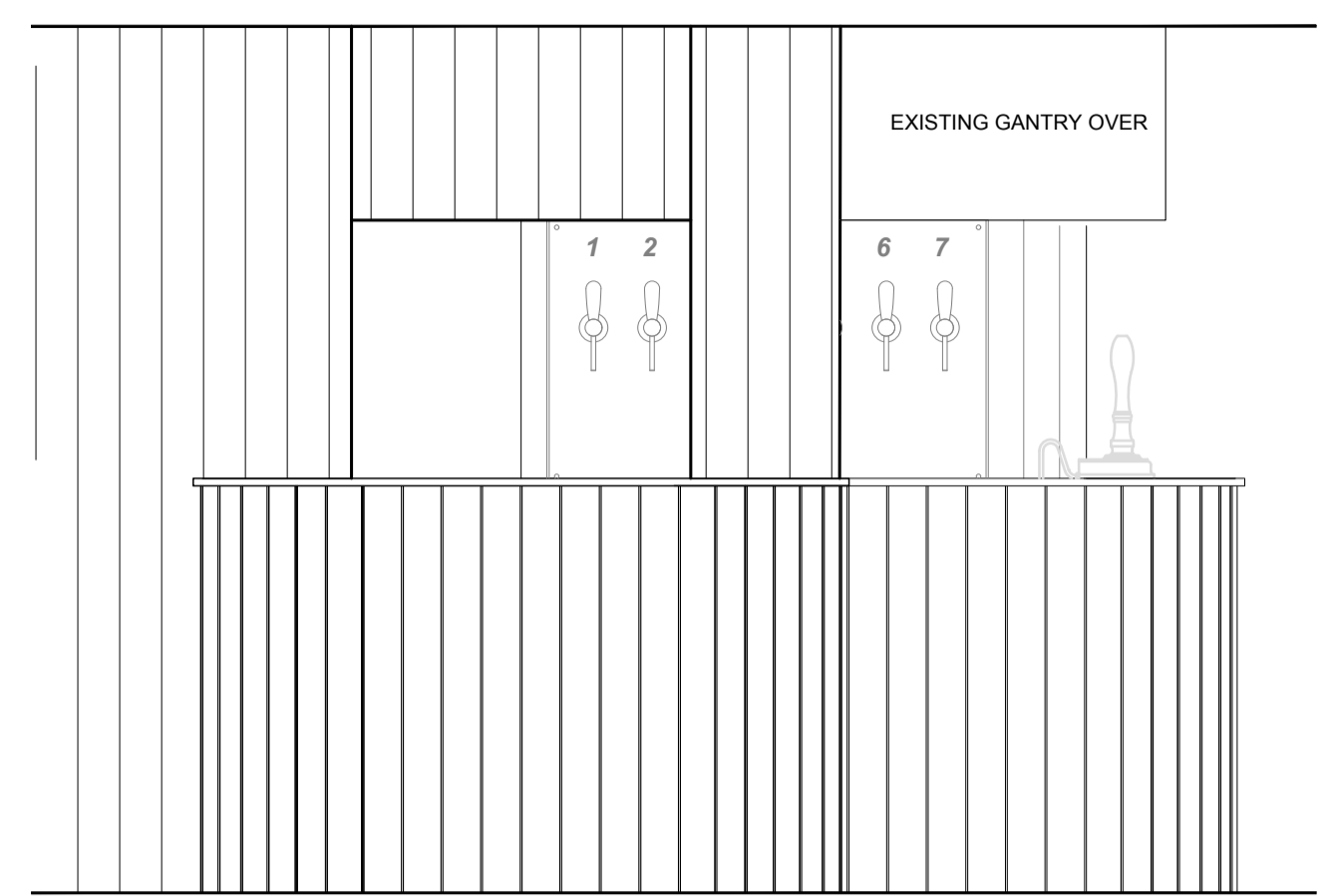


do not scale dimensions from this drawing. if in doubt refer to js design. this drawing remains the copyright of the js design partnership alone all materials specified must be used in accordance with the manufacturers recommendations and all relevant current codes of practice.

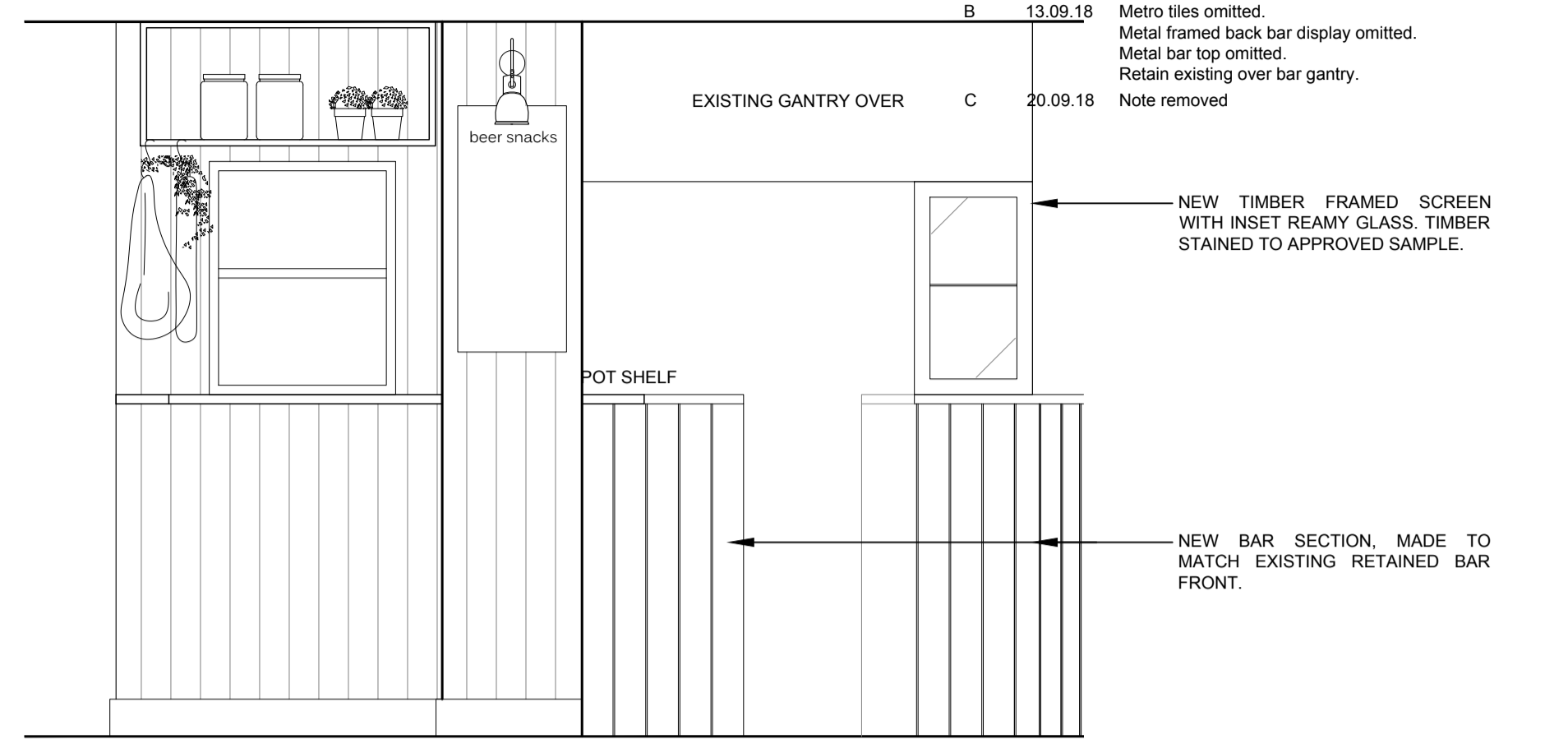
rev	date	note
A	14.08.18	note to denote existing bar sections to be retained. New elevation G and screen detail to elevation C. Metro tiles omitted. Metal framed back bar display omitted. Metal bar top omitted. Retain existing over bar gantry. Note removed
B	13.09.18	
C	20.09.18	



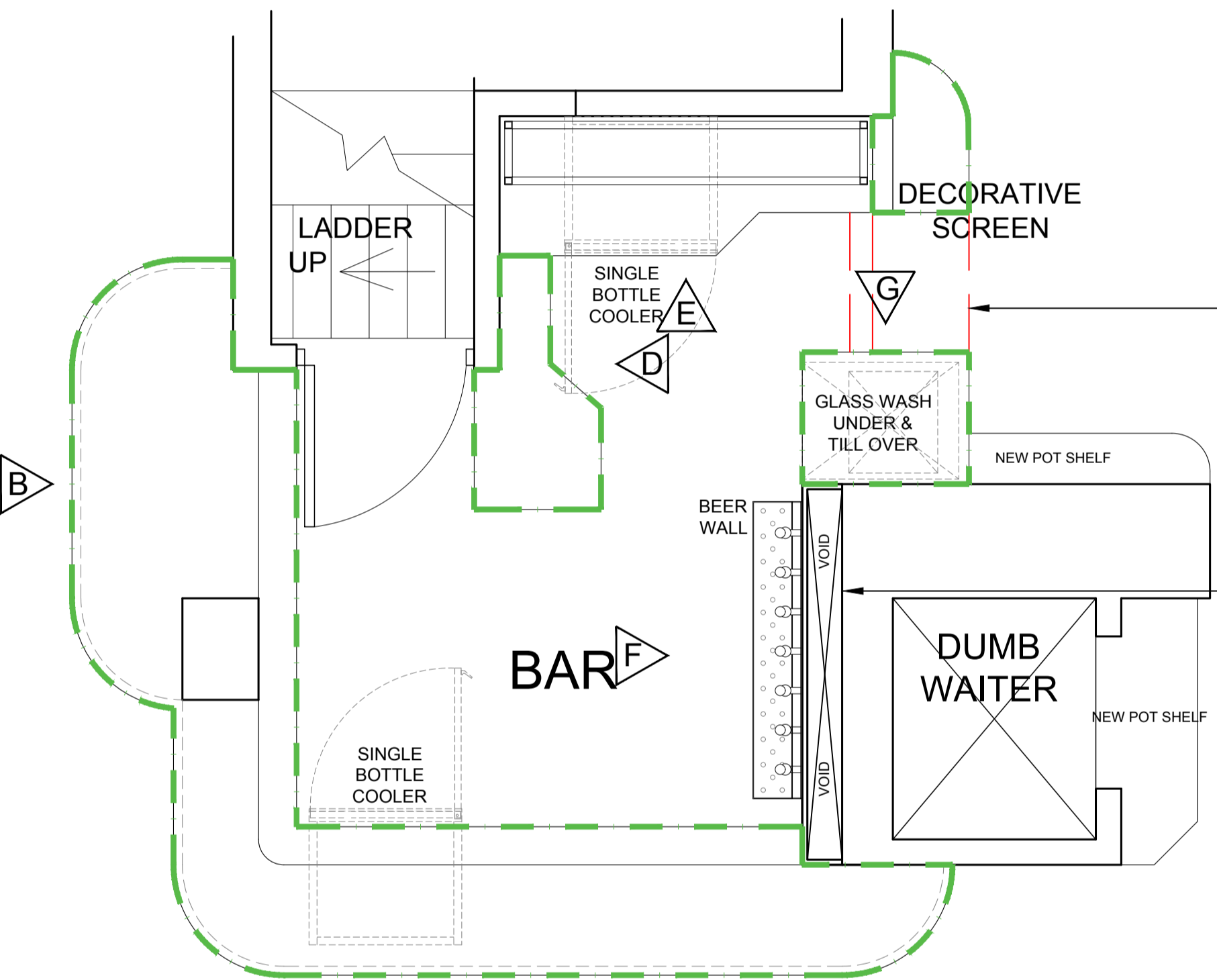
ELEVATION A 1:20@A1



ELEVATION B 1:20@A1



ELEVATION C 1:20@A1

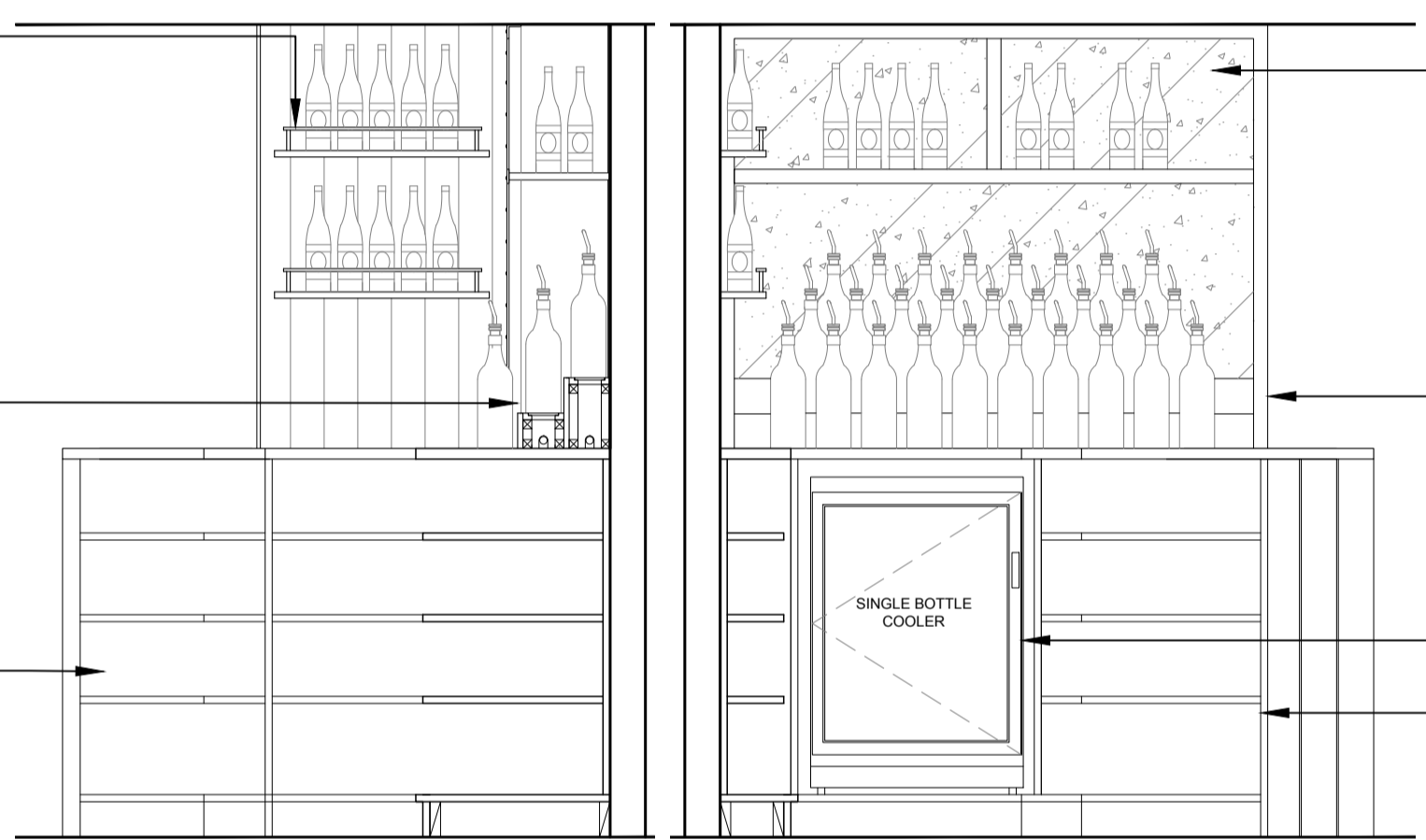


PLAN 1:20@A1

A

NOTE: EXISTING BAR SECTIONS TO BE RETAINED DENOTED IN DASHED COLOURED LINE.

NEW BRICKBOND METRO TILED WALL. FIX NEW TIMBER SHELVES TO WALL VIA SECRET FIXING WITH BLACKENED STEEL FIDDLE RAIL.
 CUT BACK EXISTING BAR SECTION AND ALTER TO SUIT NEW LAYOUT. NEW BAR INNER CHEEK SECTIONS TO MATCH BAR FACE.
 NEW DOUBLE TIER BOTTLE STEP. ALLOW CHARACTER OAK FACED STEP STAINED TO APPROVED SAMPLE WITH OPAQUE ACRYLIC REMOVABLE TOP AND LED ILLUMINATED INNER. FORM NEW VOID TO ALLOW FOR PYTHONS TO RUN THROUGH TO NEW WALL MOUNTED TAPS. "USE EXT.G. PYTHON HOLES".
 ALLOW TO REPLACE ANY DAMAGED UNDER COUNTER SHELVING, ANY NEW SHELVES TO MATCH ANDY EXISTING RETAINED.



ELEVATION D 1:20@A1

ELEVATION E 1:20@A1

ANTIQUED MIRROR BACK TOP TO CEILING REF. ROUGH OLD GLASS, VINTAGE MIRROR.



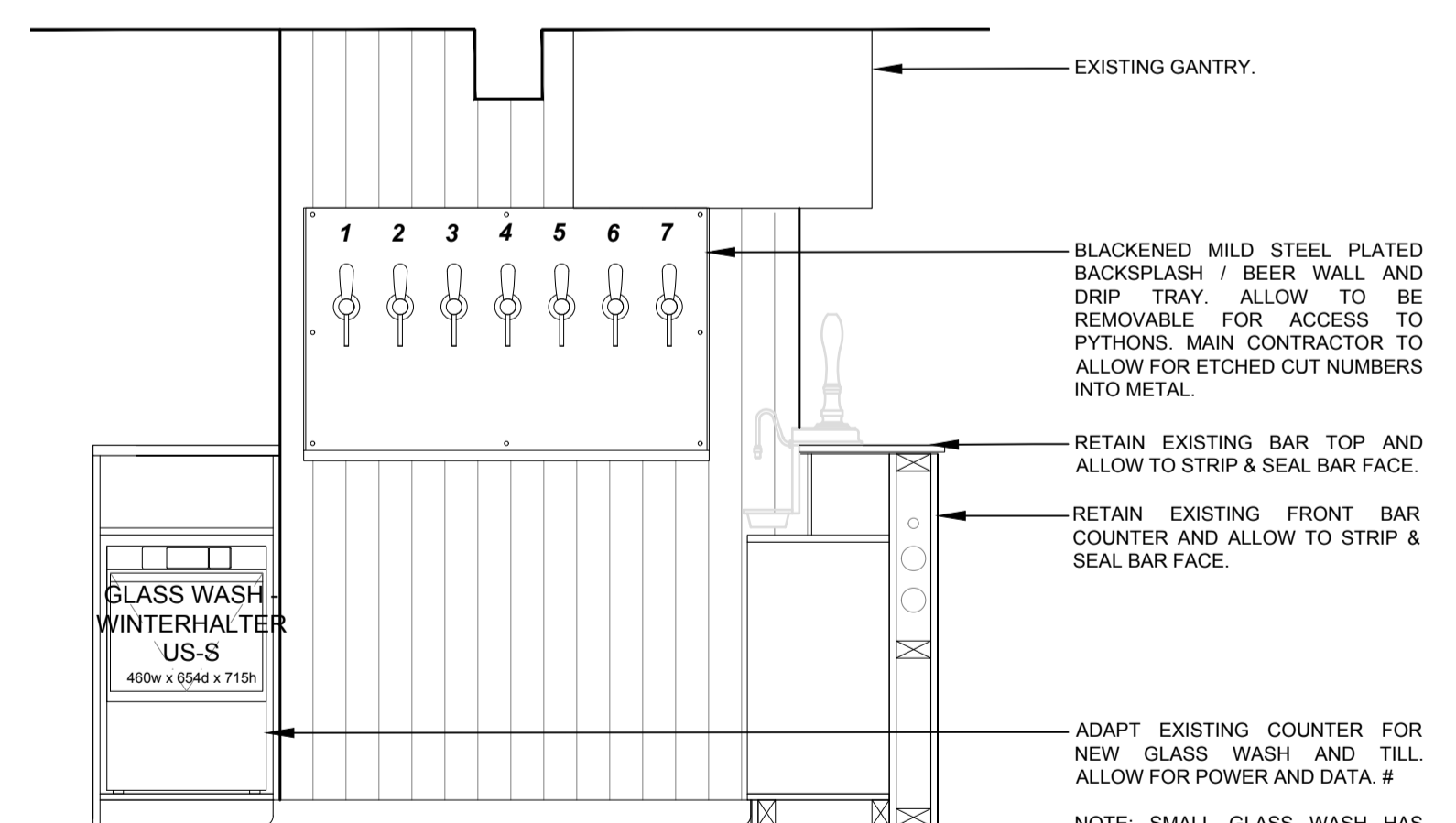
40MM THICK CHARACTER OAK FRAME AND SHELVES STAINED TO APPROVED SAMPLE.

NEW SINGLE BOTTLE COOLER. ALLOW FOR POWER.

ALLOW TO REPLACE ANY DAMAGED UNDER COUNTER SHELVING, ANY NEW SHELVES TO MATCH ANDY EXISTING RETAINED.

GENERAL NOTES

GENERALLY ALLOW FOR ALL TIMBERS/VENEERS TO BE STAINED & POLISHED TO APPROVED SAMPLE. ALL VENEERED BLOCKBOARD TO HAVE HWY LIPPLINGS TO EXPOSED EDGES. VENEERS TO RUN OVER LIPPLINGS. ALL BLOCKBOARD TO BE MOISTURE RESISTING.
 ALLOW FOR SAMPLES FOR APPROVAL BY JSO.
 VENEERS TO BE BALANCED ON REVERSE ACCORDING TO MANUFACTURERS RECOMMENDATIONS.
 TIMBER GENERALLY TO BE SELECTED QUALITY HARDWOOD.
 FORM ALL CUT OUTS FOR LIGHTFITTINGS, BEER LINES, PLUMBING ETC.
 CONTRACTOR TO ALLOW FOR ALL CUTOUTS WITH TOPS & CARCASSES FOR MBE SERVICES ETC.
 BAR & BACKFITTINGS (BELOW COUNTER LEVEL) TO BE 18MM LAMINATE FACED BLOCKBOARD INCLUDING FINISHED DIVIDERS ETC. SHELVES TO BE ON ADJUSTABLE STRIPS CONTRACTOR TO PROVIDE ADDITIONAL SUPPORT TO FRONT & BACK EDGES TO PREVENT BAGGING.
 PROVIDE TILL SCREENS TO MATCH COUNTER TOP. INCLUDE FOR VISION CUT OUT FOR DISPLAY.
 EXACT TILL SIZE / COOLER SIZE TO BE CONFIRMED BY LESSEE. CONTRACTOR TO POSITION ALL BOTTLE COOLERS, MILK FRIDGE, TILL, COFFEE MACHINE & GRINDER.
 FINISH ALL RAW TIMBER EDGES.
 FIX ALL CLIENTS LAST ORDERS BELL, PRICE LISTS, DISCLAIMERS AS DIRECTED.
 ALL JOINERY FIXINGS TO BE FILLED FLUSH W. PELLETED OR SUITABLE WAX BASED FILLER. FINISH SMOOTH FOR POLISHING OR PAINTING.
 ALL JOINERY TO BE FINISHED TO ACHIEVE CLASS 1 SPREAD OF FLAME CONFIRM SIZES OF COOLERS, TILLS, ETC. PRIOR TO MANUFACTURE.
 ALLOW FOR SEPERATE RING MAIN WITH APPROX 4NO DOUBLE SOCKET OUTLETS TO LOWER SECTION OF BACKFITTING COUNTER, AND 2NO TO UPPER SECTION.
 PROVIDE POWER TO ALL EQUIPMENT INCLUDING POWER TO CHILLED DISPENSE PRODUCTS TO COUNTER, AND COFFEE MACHINE/GRINDER, WITH ALLOWANCE FOR CLEAN LINES TO TILL POINT.



ELEVATION F 1:20@A1

EXISTING GANTRY.

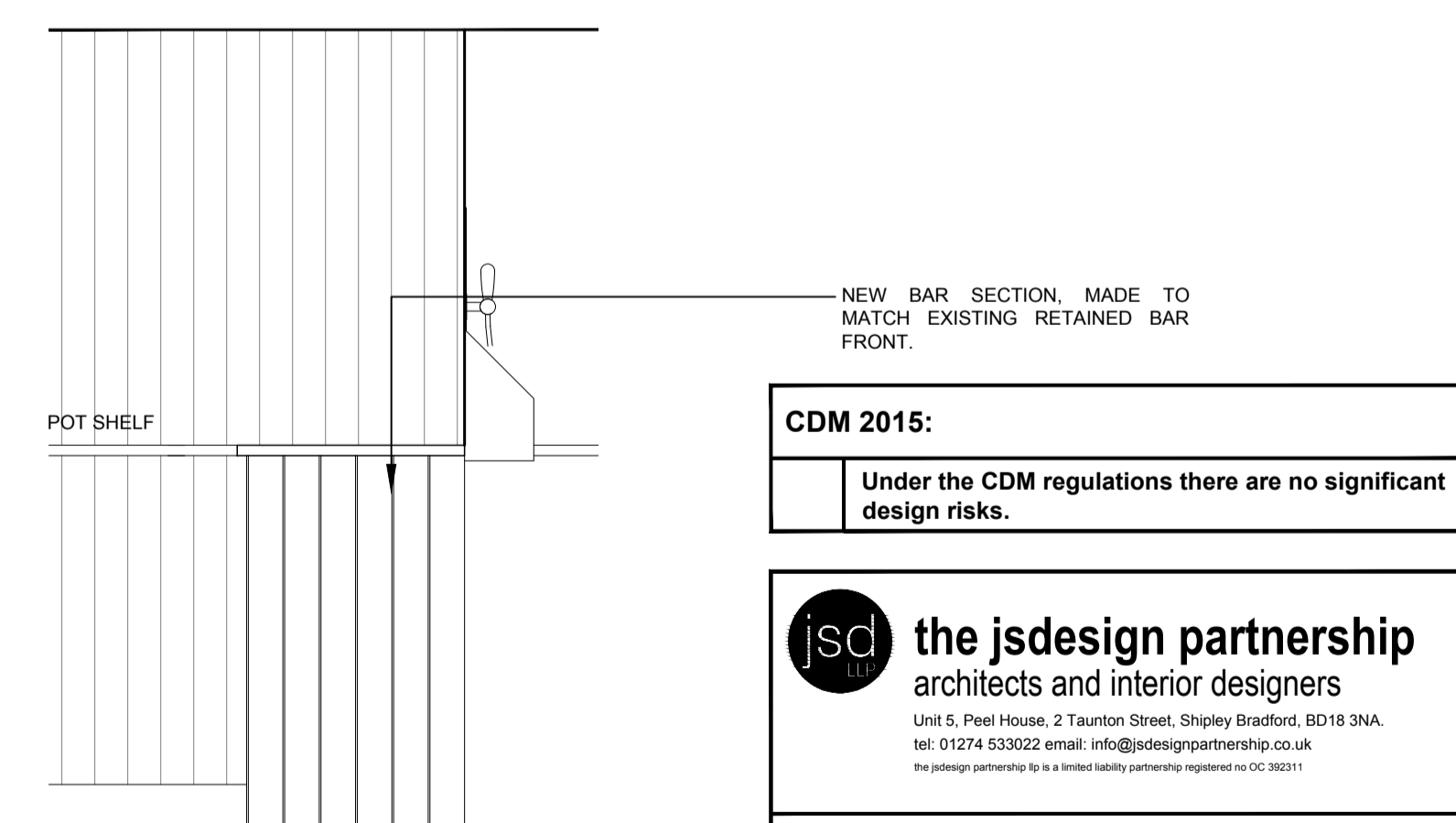
BLACKENED MILD STEEL PLATED BACKSLASH / BEER WALL AND DRIP TRAY. ALLOW TO BE REMOVABLE FOR ACCESS TO PYTHONS. MAIN CONTRACTOR TO ALLOW FOR ETCHED CUT NUMBERS INTO METAL.

RETAIN EXISTING BAR TOP AND ALLOW TO STRIP & SEAL BAR FACE.

RETAIN EXISTING FRONT BAR COUNTER AND ALLOW TO STRIP & SEAL BAR FACE.

ADAPT EXISTING COUNTER FOR NEW GLASS WASH AND TILL. ALLOW FOR POWER AND DATA. #

NOTE: SMALL GLASS WASH HAS BEEN SPECIFIED - ANYTHING BIGGER WILL NOT FIT.



ELEVATION G 1:20@A1

CDM 2015:
 Under the CDM regulations there are no significant design risks.

jsd the jsdesign partnership architects and interior designers
 Unit 5, Peel House, 2 Taunton Street, Shipley Bradford, BD18 3NA.
 tel: 01274 533022 email: info@jsdesignpartnership.co.uk
 the jsdesign partnership is a limited liability partnership registered no 0029211

client
 star PUBS & BARS

address
 PRINCE OF WALES
 53 HIGHGATE HIGH STREET
 LONDON
 N6 5JX

drawing title
 BAR DETAILS

drawing no	rev	date	drawn by	checked	scale
7640-06	C	16.08.17	FP	-	VARIES