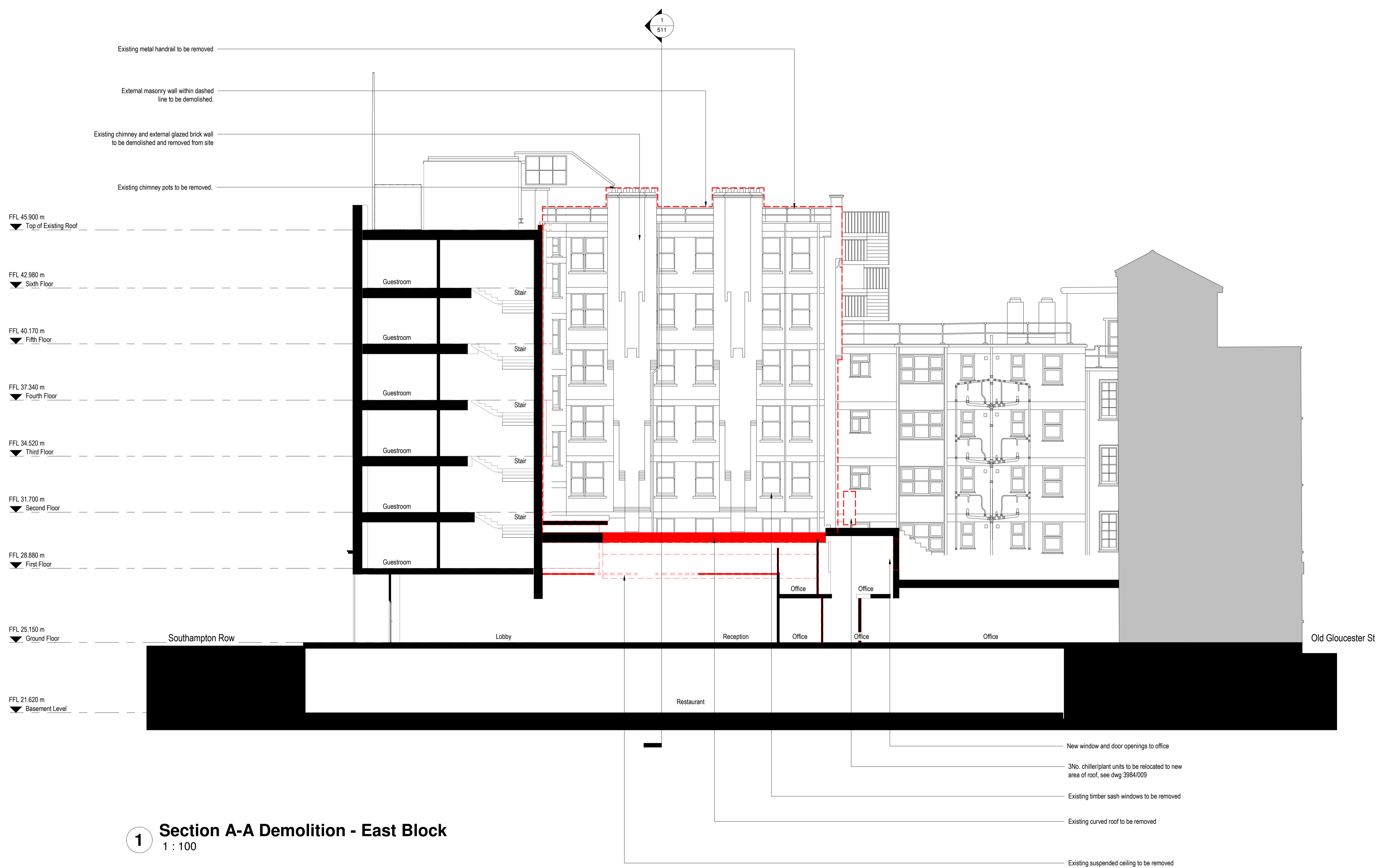


**Demolitions**

Walls to be removed - Red

This dwg to be read in conjunction with all Demolition drawings.



**1 Section A-A Demolition - East Block**  
 1 : 100

- New window and door openings to office
- 3No. chiller/plant units to be relocated to new area of roof, see dwg 3984/009
- Existing timber sash windows to be removed
- Existing curved roof to be removed
- Existing suspended ceiling to be removed

Revision	Description	Date
A	Drawing status changed, Planning Submission	13.07.18



St Alkmunds House, 103 Belper Road, Derby DE1 3ES  
 T: 01332 363355 F: 01332 291441 E: architect@morrisondesign.co.uk

Job Title  
**DoubleTree West End Hotel, Southampton Row, London, WC1B 4BH**

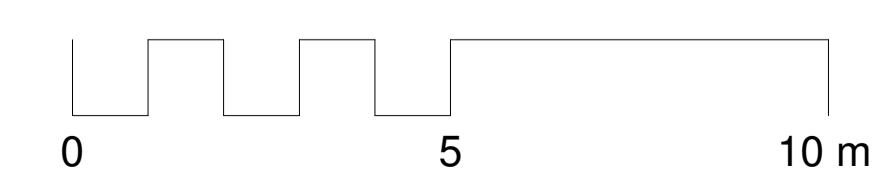
Phase 3 Preliminary Proposals

Drawing Title  
**Section A-A Demolition**

File Ref.:  
 Plotter Settings:

Scale	Drawn	Checked	Date
@ A1:As indicated	DR	NC	01/06/18

Job No.	Drawing No.	Revision
3984	510	A



**PLANNING SUBMISSION**