

13

12

11

10

9

8

E

6

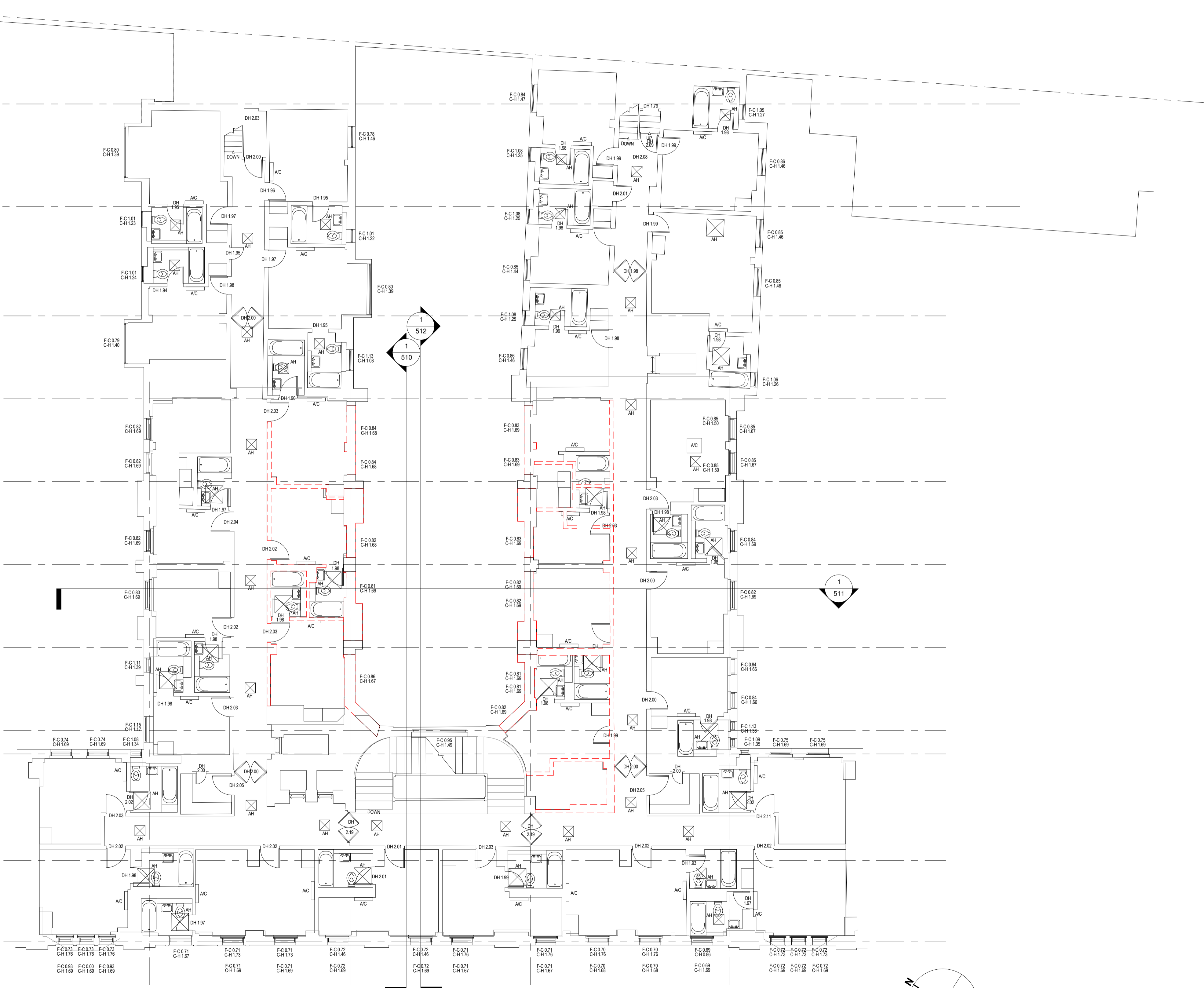
5

4

3

2

1



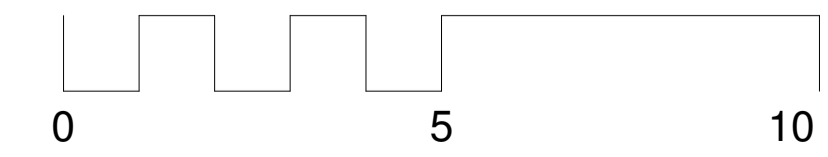
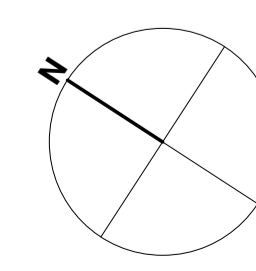
Fourth Floor Demolition
1 : 100

A

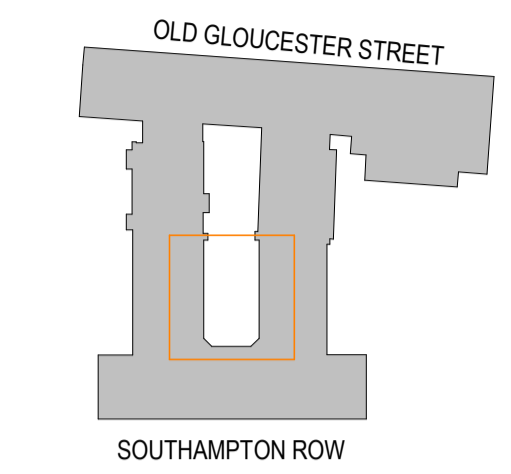
B

C

D



NOTES:
Do not scale from this drawing.
Dimensions to be site checked by Contractor working only from grid and figured dimensions and cross checked with all other relevant drawings.
Any discrepancies to be reported to the Architect prior to construction.
The title, copyright and information in this document is the property of Morrison Design Ltd, Chartered Architects.



Demolitions
--- Walls to be removed - Red
 This dwg to be read in conjunction with all Demolition drawings.

Revision	Description	Date
A	Drawing status changed, Planning Submission	13.07.18



St Alkmunds House, 103 Belper Road, Derby DE1 3ES
 T: 01332 363355 F: 01332 291441 E: architect@morrisondesign.co.uk

Job Title
DoubleTree West End Hotel, Southampton Row, London, WC1B 4BH

Phase 3 Preliminary Proposals

4th Floor Demolition

File Ref:
 Plotter Settings:

Scale	Drawn	Checked	Date
@ A1:As indicated	DR	NC	01/06/18

Job No.	Drawing No.	Revision
3984	506	A

PLANNING SUBMISSION