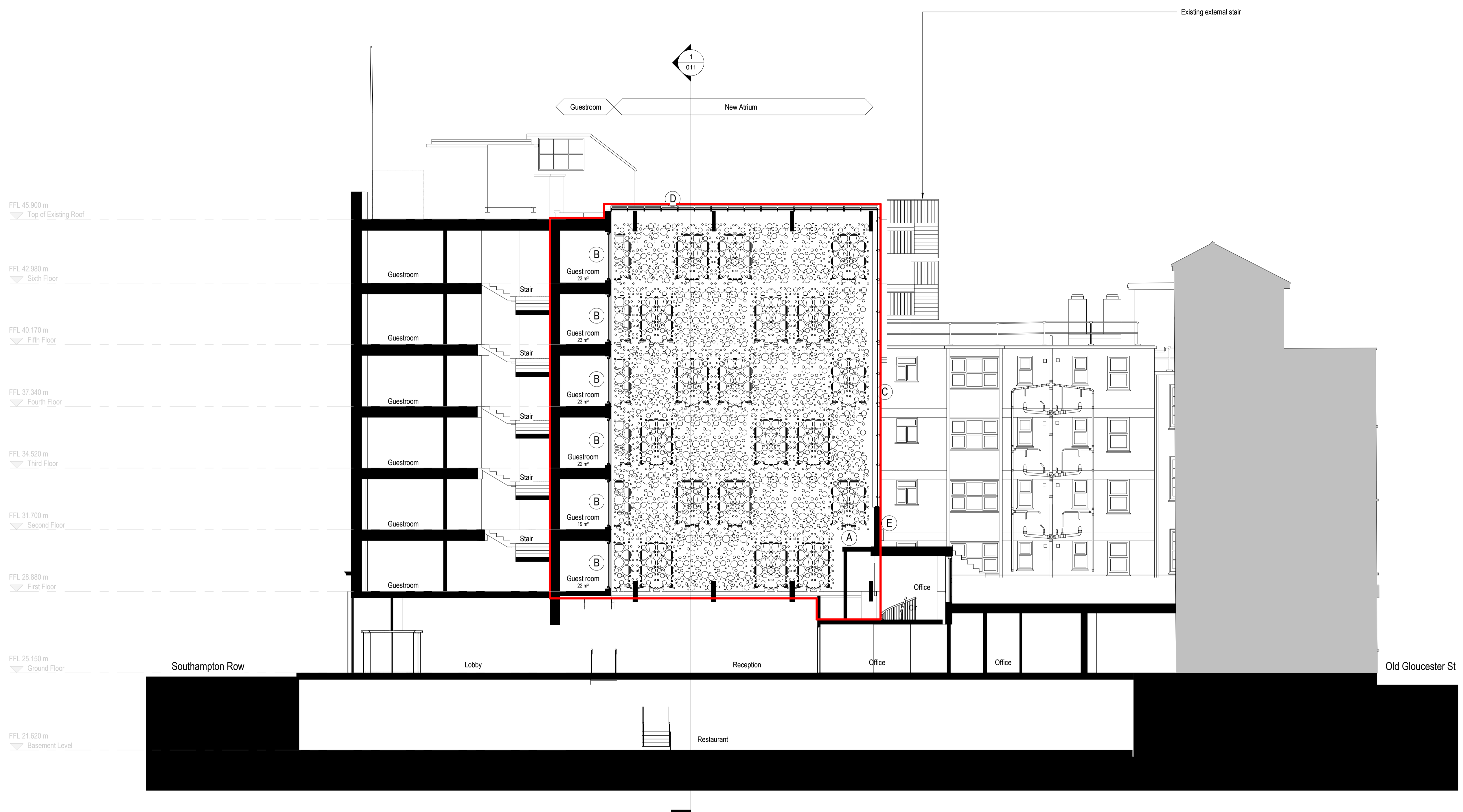
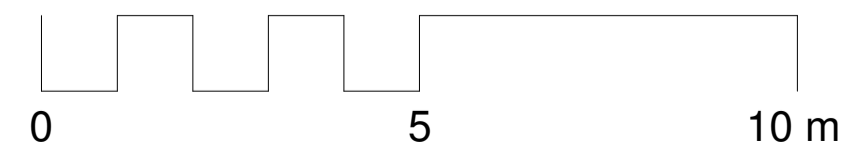


- MATERIALS**
- Proposed
- A. New metal full height perforated screen wall.
 - B. New double glazed side hung full height glazed windows.
 - C. New clear Planar System single glazed full height.
 - D. New clear double glazed slopped Atrium roof including top automatic opening glazed smoke vents.
 - E. New SFS insulated wall system.
- Existing
- G. Glazed brickwork.
 - H. Buff brickwork.
 - I. Concrete ring beam.
 - J. UPVC windows.
 - K. Timber Sash windows.



1 Section A-A East Block - Proposed
 1 : 100



Revision	Description	Date
A	Drawing status changed, Planning Submission	13.07.18



St Alkmunds House, 103 Belper Road, Derby DE1 3ES
 T: 01332 363355 F: 01332 291441 E: architect@morrisondesign.co.uk

Job Title
 DoubleTree West End Hotel, Southampton Row, London, WC1B 4BH

Phase 3 Preliminary Proposals

Drawing Title
 Section A-A as Proposed

File Ref:
 Plotter Settings:

Scale	Drawn	Checked	Date
@ A1:As indicated	DR	NC	31/05/18
Job No.	Drawing No.	Revision	
3984	010	A	

PLANNING SUBMISSION