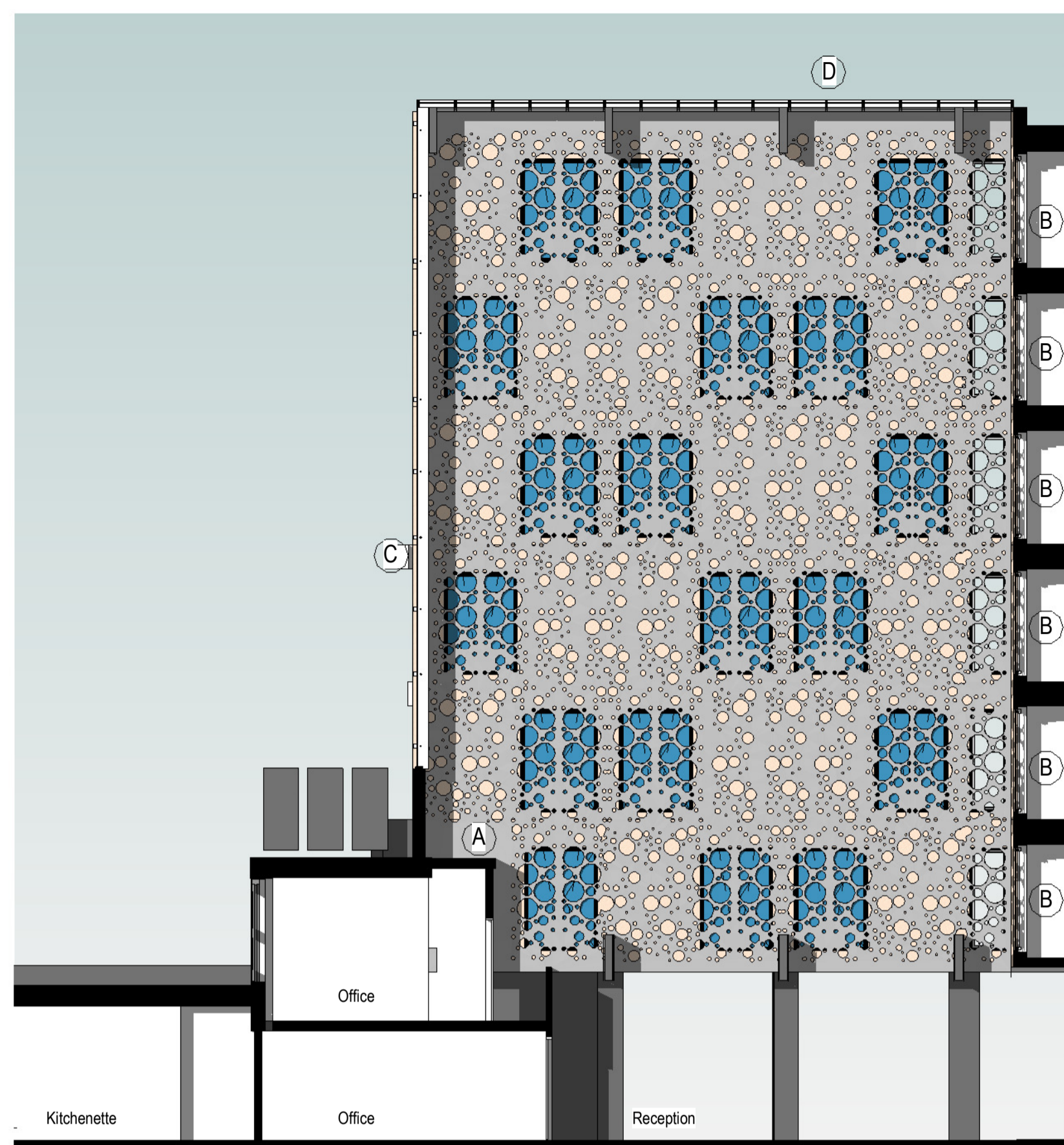
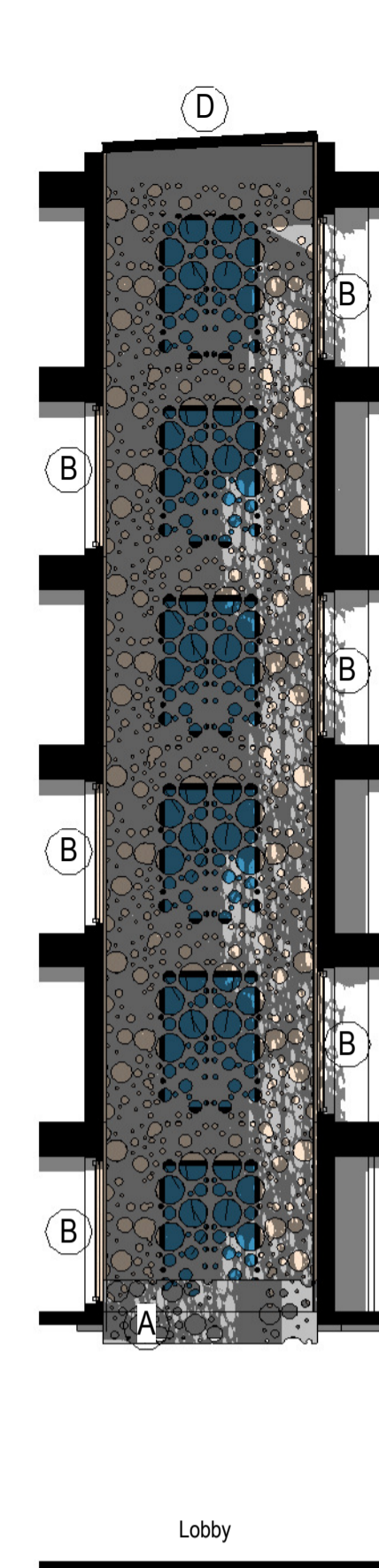


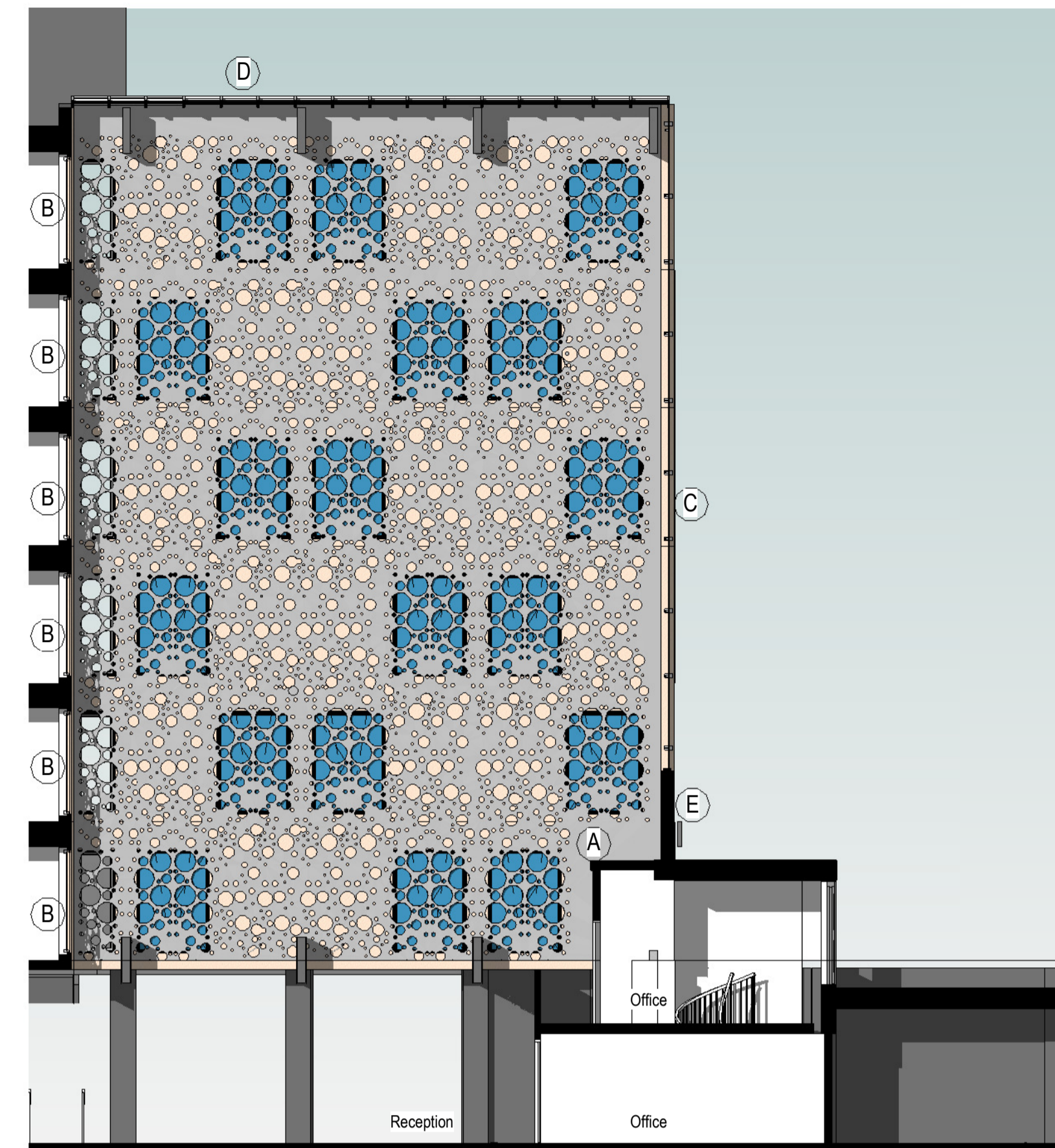
1 East Elevation - Glazed Wall
1 : 100



2 South Elevation - Perforated Mesh
1 : 100

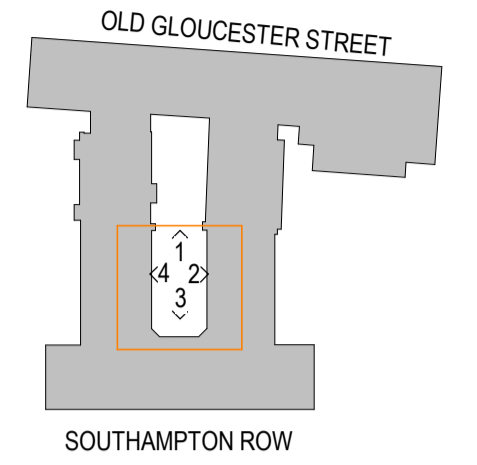


3 West - Mesh
1 : 100



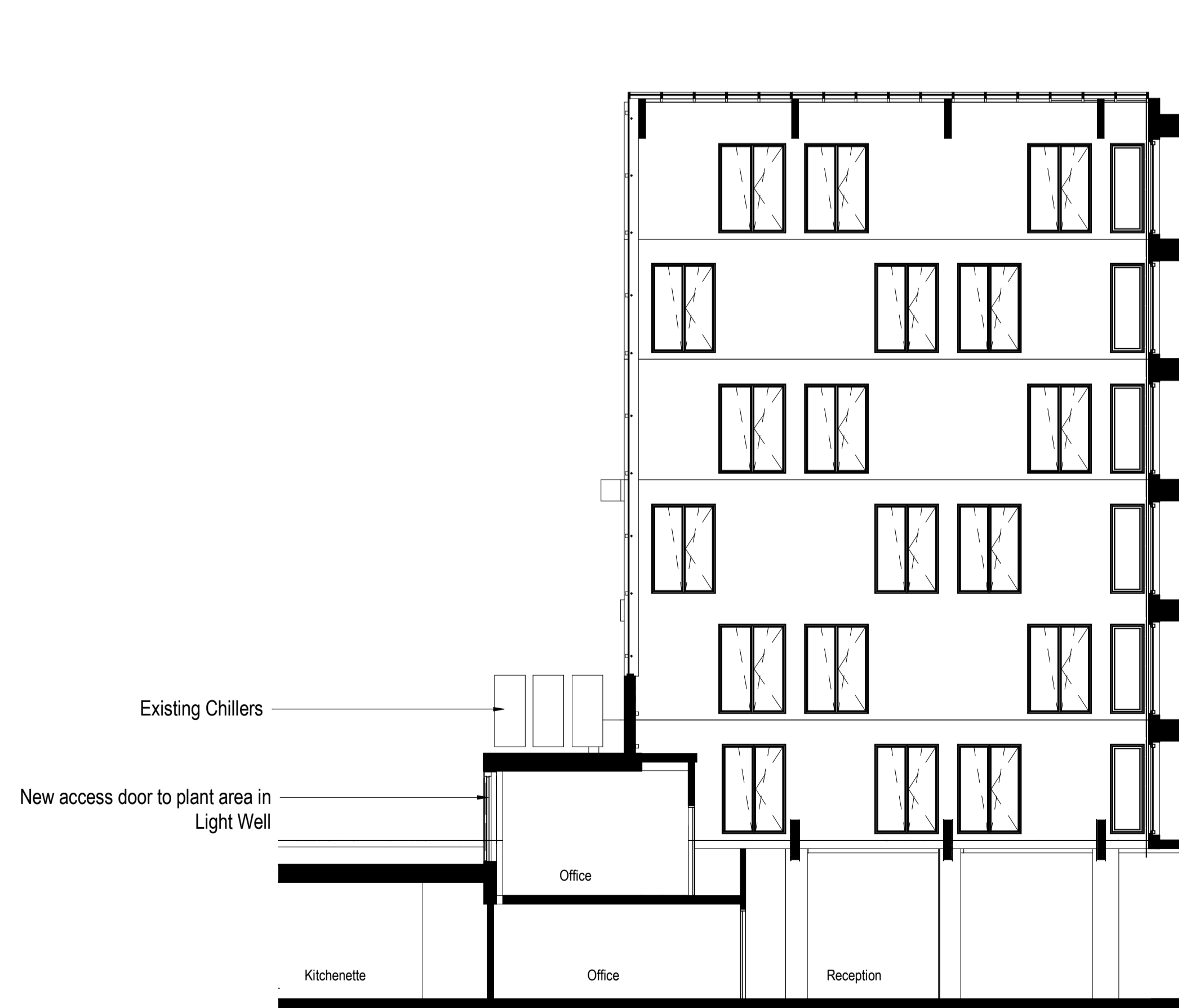
4 North Elevation - Perforated Mesh
1 : 100

NOTES:
Do not scale from this drawing.
Dimensions to be site checked by Contractor working only from grid and figured dimensions and cross checked with all other relevant drawings.
Any discrepancies to be reported to the Architect prior to construction.
The title, copyright and information in this document is the property of Morrison Design Ltd, Chartered Architects.

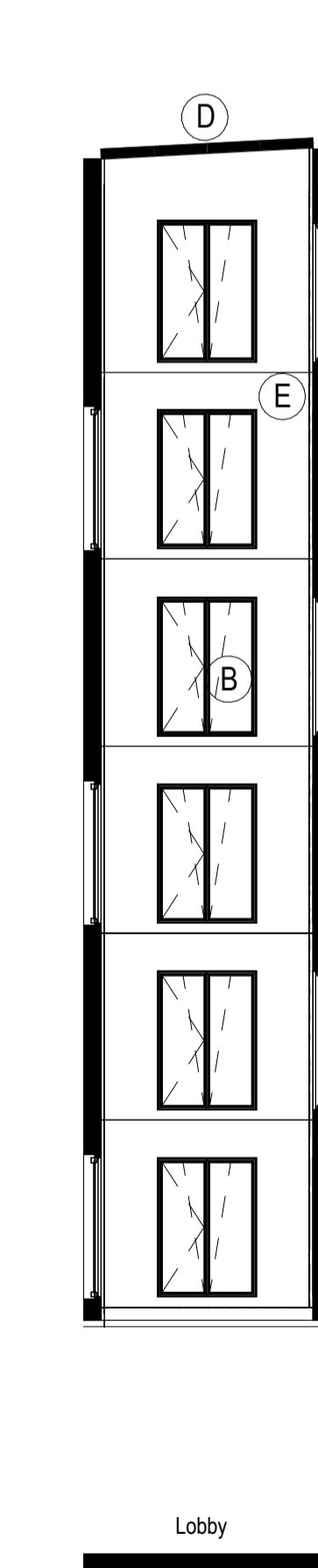


MATERIALS

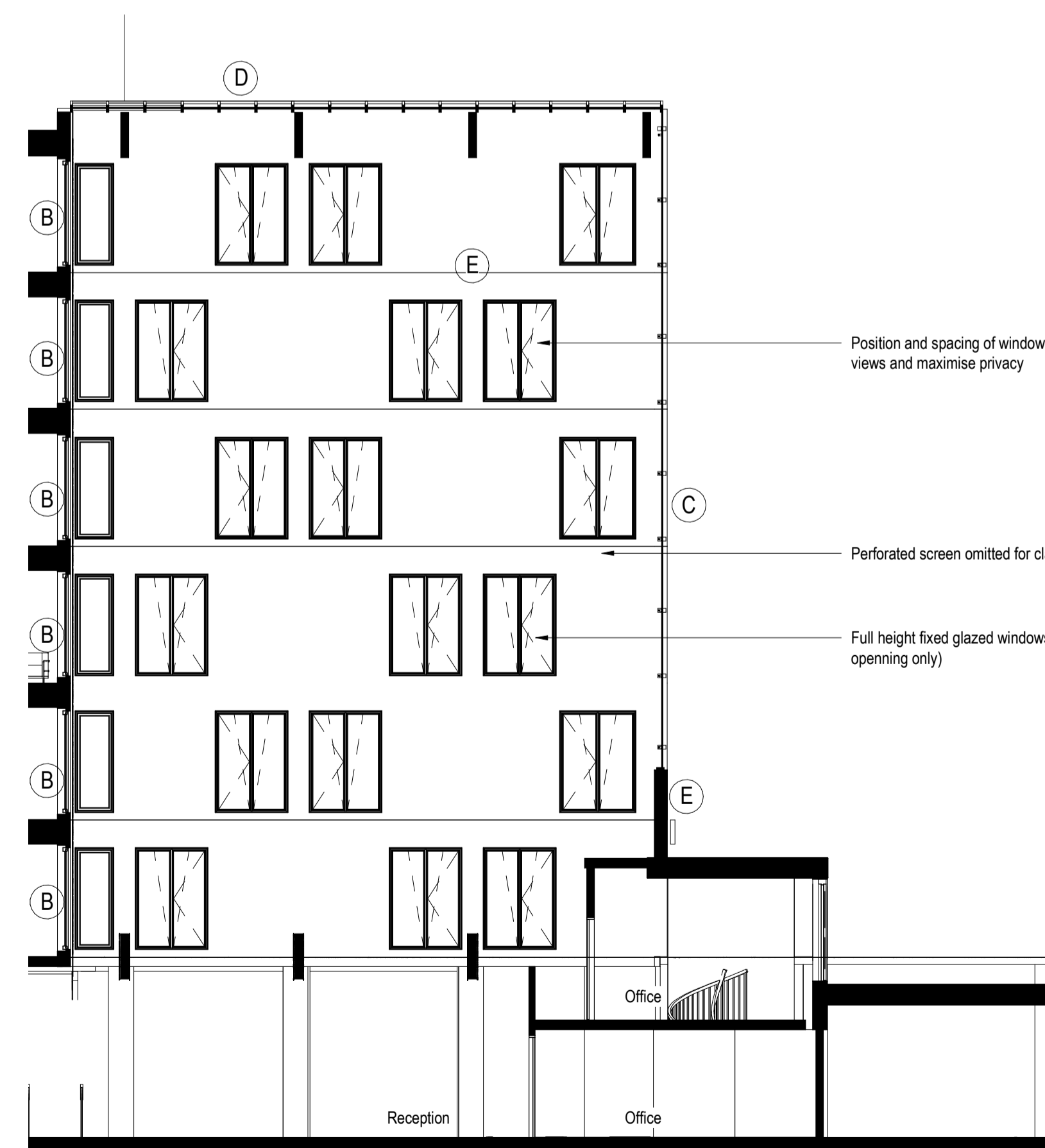
- Proposed
- A. New metal full height perforated screen wall.
 - B. New double glazed side hung full height glazed windows.
 - C. New clear Planar System single glazed full height.
 - D. New clear double glazed sloped Atrium roof including top automatic opening glazed smoke vents.
 - E. New SFS insulated wall system.
- Existing
- G. Glazed brickwork.
 - H. Buff brickwork.
 - I. Concrete ring beam.
 - J. UPVC windows.
 - K. Timber Sash windows.



5 South Elevation - Openings
1 : 100



6 West Elevation
1 : 100



7 North Elevation
1 : 100

Position and spacing of windows to minimise cross views and maximise privacy

Perforated screen omitted for clarity

Full height fixed glazed windows (Maintenance opening only)

Revision	Description	Date
B	Drawing status changed, Planning Submission	13.07.18
A	Proposed Atrium cross bracing shown at high level	02.07.18



MORRISON DESIGN
CHARTERED ARCHITECTS

St Alkmunds House, 103 Belper Road, Derby DE1 3ES
T: 01332 363355 F: 01332 291441 E: architect@morrisondesign.co.uk

Job Title
DoubleTree West End Hotel, Southampton Row, London, WC1B 4BH

Phase 3 Preliminary Proposals

Drawing Title
Proposed Atrium Internal Elevations

File Ref.:
Plotter Settings:

Scale	Drawn	Checked	Date
@ A1:As indicated	DR	NC	27/06/18

Job No.	Drawing No.	Revision
3984	SK004	B

PLANNING SUBMISSION