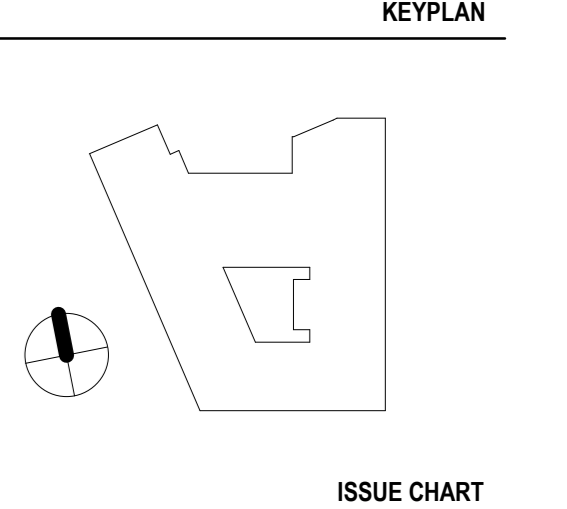


**NOTES**  
This drawing is the property of Perkins+Will UK Ltd. No disclosure or copy of it may be made without the written permission of Perkins+Will UK Ltd.  
All information, areas, dimensions and datum levels are subject to detailed survey, detailed design and investigative work. Do not scale from the drawing.

NOTE: DOCUMENTS ARE INCOMPLETE AND MAY NOT BE USED FOR REGULATORY APPROVAL, PERMITTING, OR CONSTRUCTION PURPOSES.

**PROJECT**  
150 Holborn

**DARPLUS**  
DAR  
WIGMORE STREET  
LONDON W1

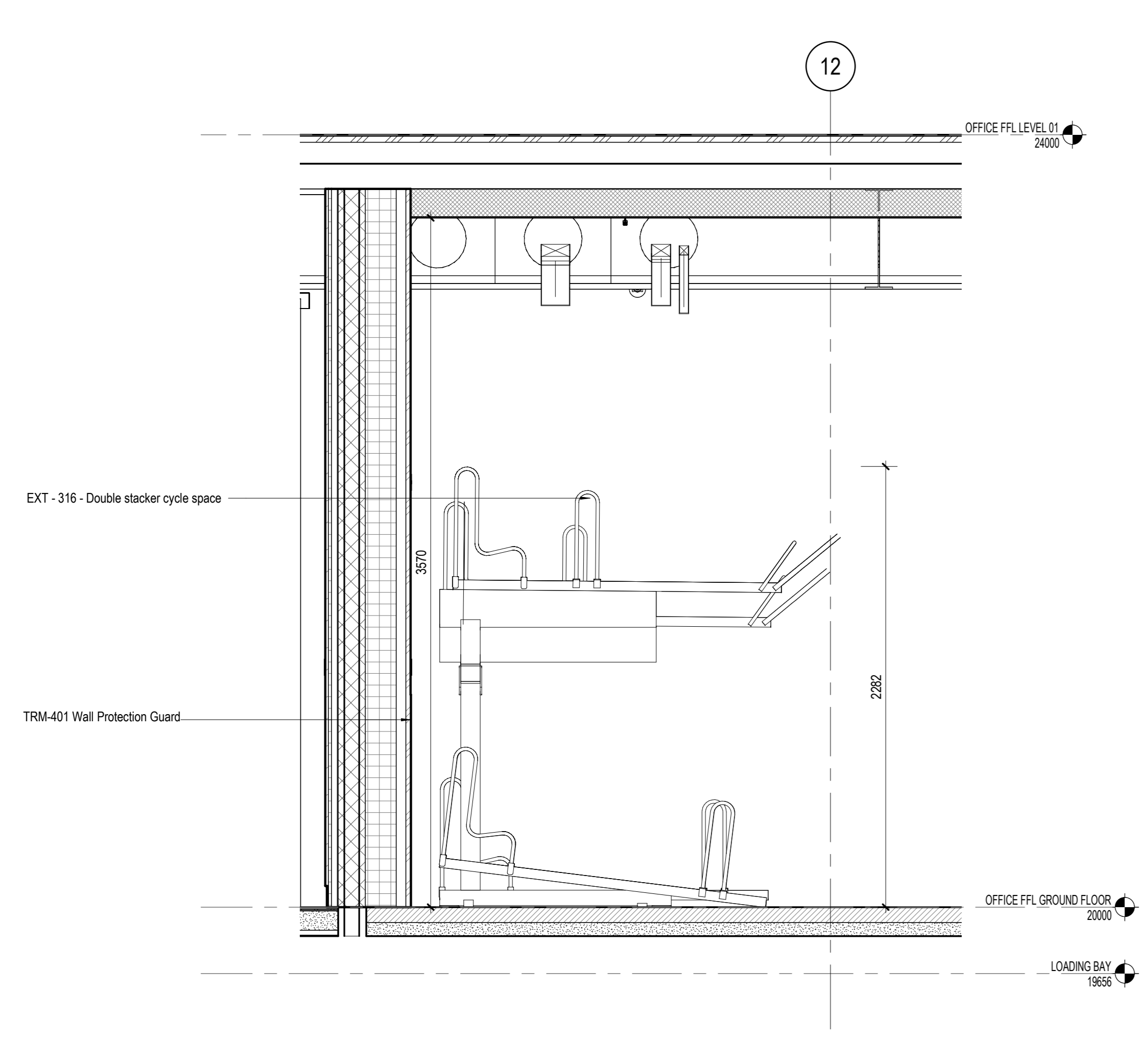
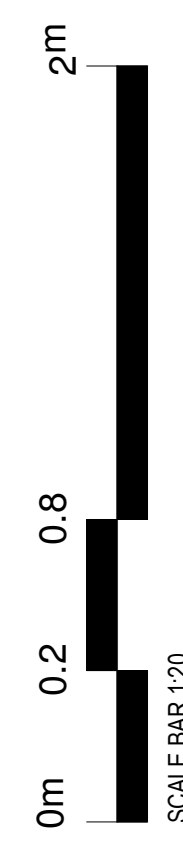


**ISSUE CHART**

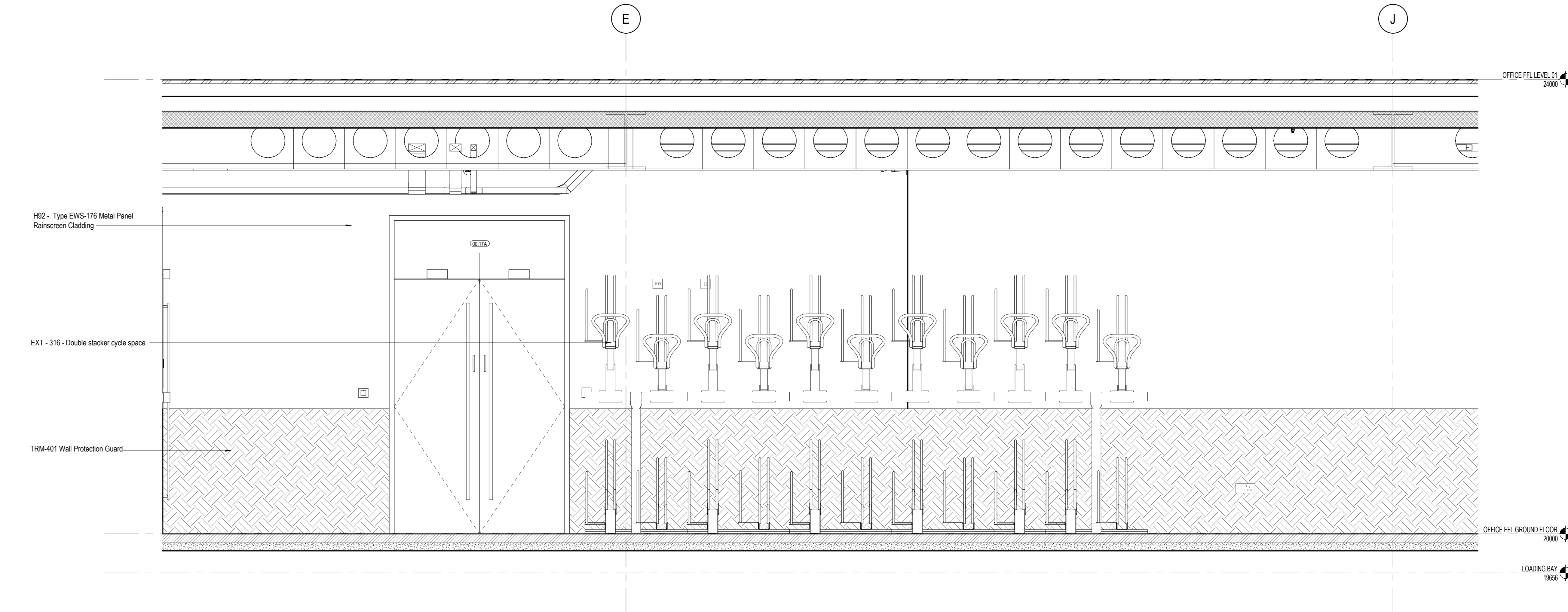
PI 1	STAGE 04	2019/07/27
DATE	DATE	DATE
07/26/18		
Job Number	325424	
Scale	1:20	
Drawn	Author	
Checked	Checker	
Approved	Approver	

**STAGE 04 - FOR TENDER**  
TITLE

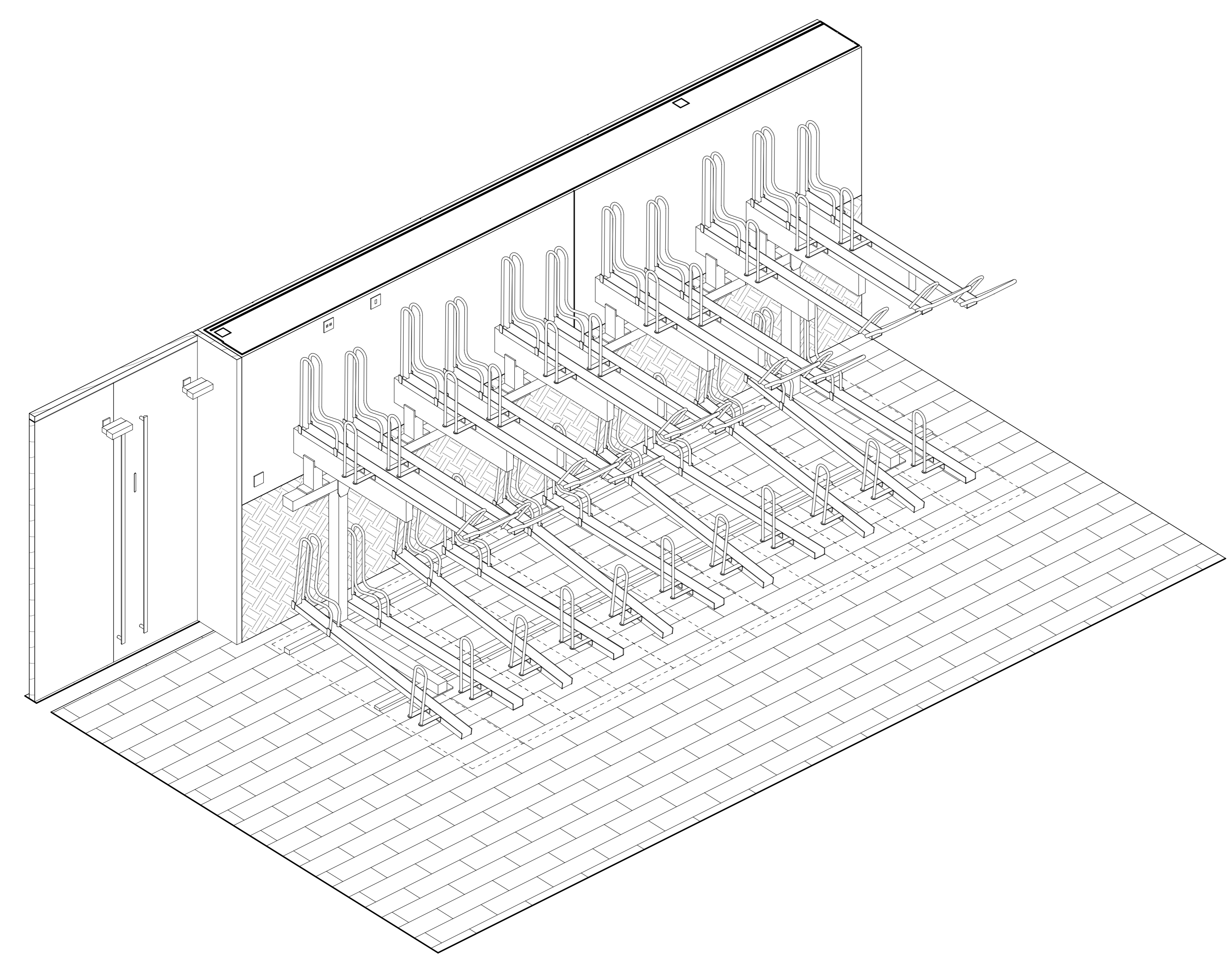
**Enlarged Plans - L00  
Bike Store 5**  
SHEET NUMBER



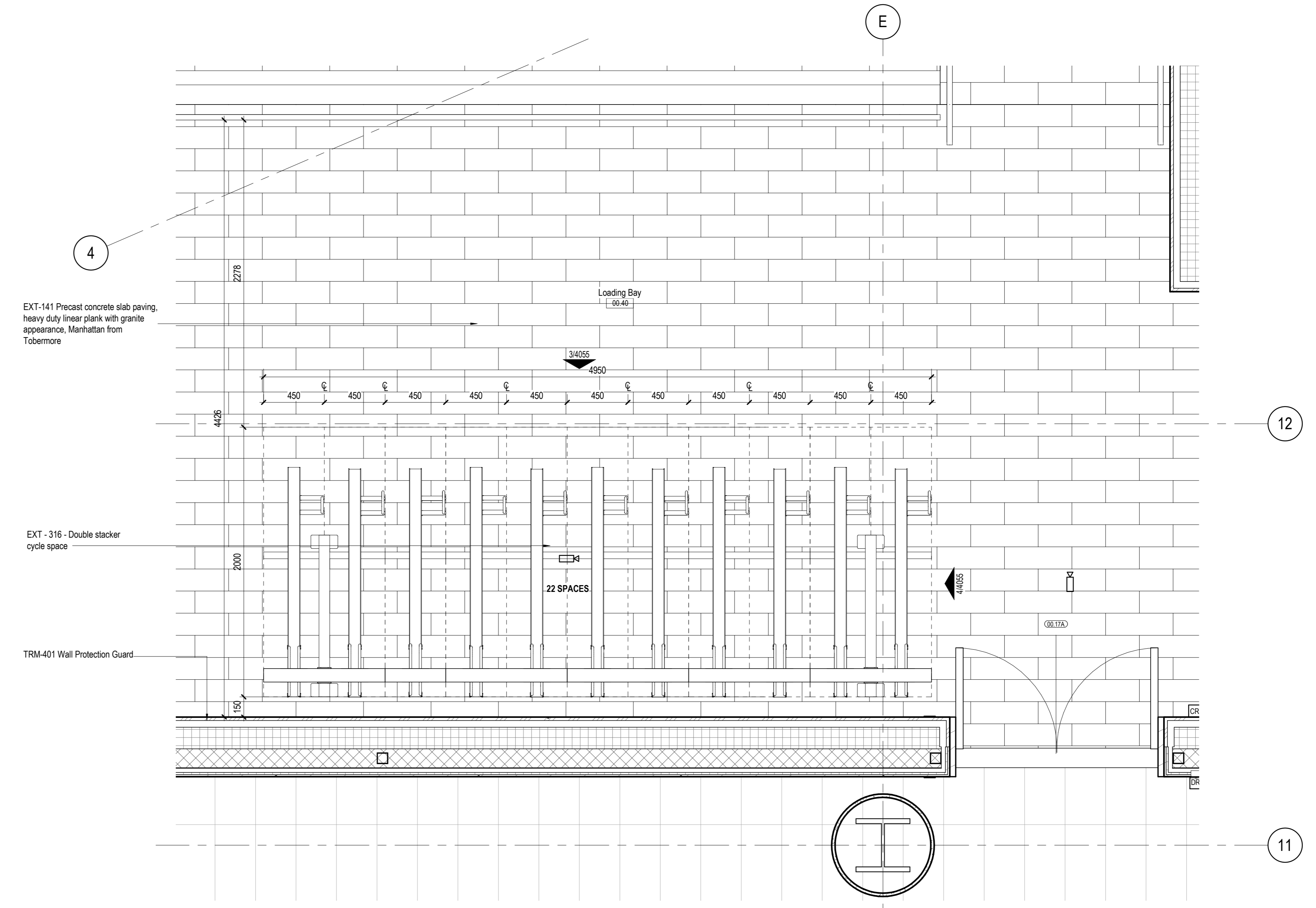
**4 Enlarged Elevation 2 - Cycle Parking 5**  
1:20 Referencing View: 1/A4021



**3 Enlarged Elevation 1 - Cycle Parking 5**  
1:20 Referencing View: 1/A4021



**2 Cycle Parking - Ground Floor**



**1 GA Plan Ground Floor - Callout 1**  
1:20 Referencing View: 1/A1100